

05/20	PROTOTYPE 5200
18/20	REVISION 1

[illegible]**PROFESSIONAL SEAL**

PROFESSIONAL IN CHARGE
CH PROF IN CHARGE

PROJECT MANAGER
CH PM

QUALITY CONTROL
CH QC

DRAWN BY
CH DRAWN

PROJECT NAME

**CIRCLE K
STORES INC.
200 WOOD
CITY
S STATE**

ADDRESS_LINE_1
ADDRESS_LINE_2
ADDRESS_LINE_3



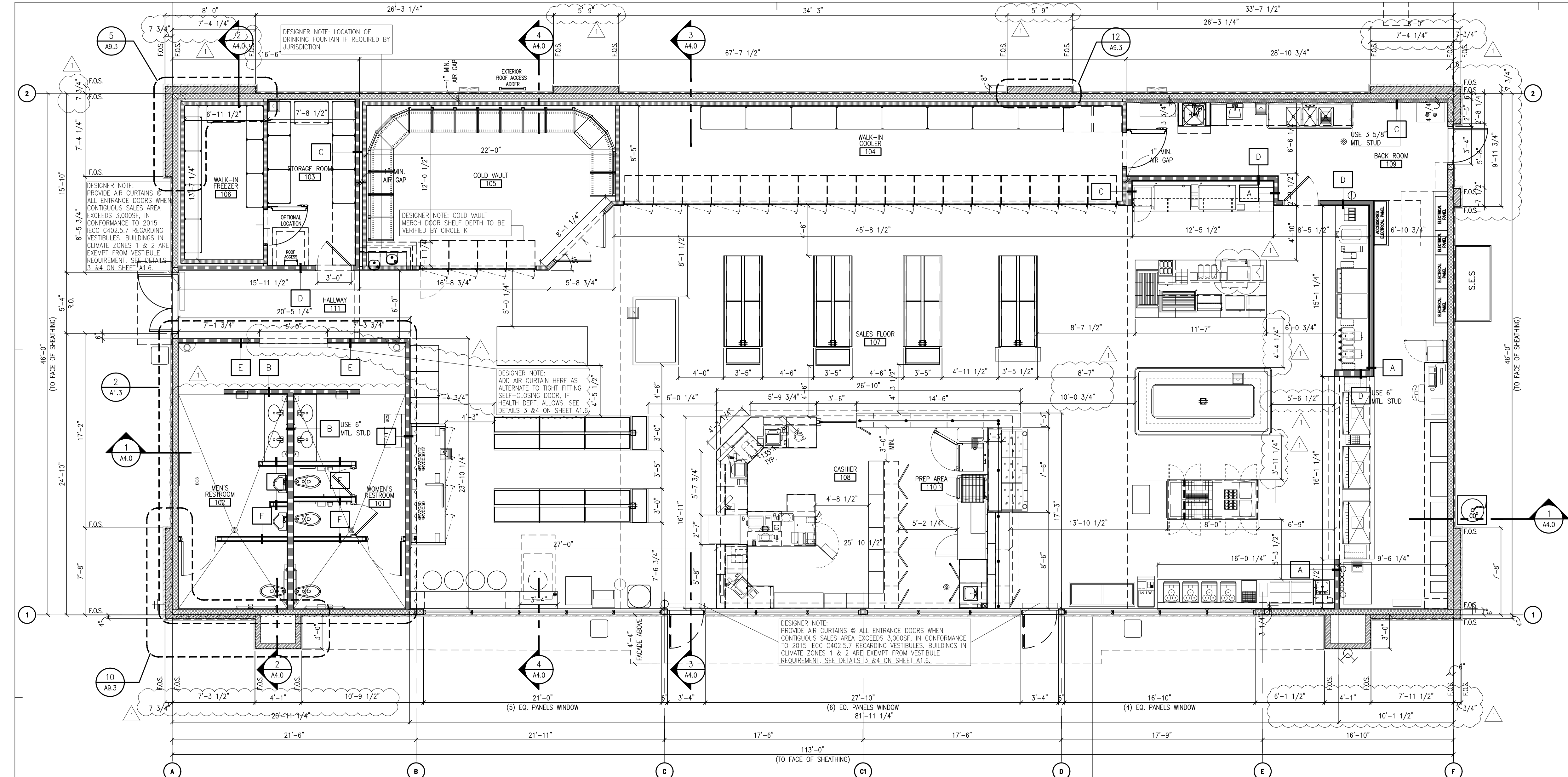
PROJECT NUMBER

SHEET TITLE

**5200 NICHIIHA
EXTERIOR
ELEVATIONS
(SCHEME A)**

SHEET NUMBER

A2.1



RESTROOM KEY NOTES

- 30"x48" ADA ACCESSIBLE SPACE AT LAV.
- PARTITION
- COUNTERTOP (SUPPLIED BY CK AND INSTALLED BY OTHERS)
- 36"x48" ADA ACCESSIBLE SPACE AT URINAL
- CONVENIENCE HOOKS
- GRAB BAR 1-1/4" - 1-1/2" DIAMETER, PROVIDE ADEQUATE BLOCKING
- FLOOR DRAIN, SEE PLUMBING DWGS.
- INSULATED WATER AND DRAIN PIPES
- 60" DIA. MIN. CLEAR FOR WHEELCHAIR
- PORCELAIN TILE WALLS
- PORCELAIN TILE FLOORS
- STEEL POST, SEE DETAIL 7/A9.1 DETAIL 'A'
- TOILET FLUSH VALVES TO BE ON THE WIDE SIDE OF STALL
- TOILET PAPER DISPENSER
- SANITARY NAPKIN DISPOSAL
- MIRROR
- SOLID BLOCKING AT WALL FOR ALL MOUNTED EQUIPMENT
- FLOOR SHALL SLOPE 1/8" TO DRAIN
- TOILET SEAT COVER DISPENSER
- RECESSED AUTOMATIC PAPER TOWEL DISPENSER
- RECESSED TRASH RECEPTACLE
- BBY CHANGING TABLE TO BE INSTALLED BY G.C.
- SOAP DISPENSERS
- S.S. TRASH CAN

DESIGNER NOTE MINNESOTA OPTION: -AMBULATORY STALL 2015 MINNESOTA ACCESSIBILITY CODE (1109.2.2 THAT SAYS THE AMBULATORY RESTROOM STALL IS REQUIRED FOR 2 FIXTURES. REQUIREMENTS 36" WIDTH, ADA REQUIREMENTS: ADD GRAB BARS, 2'-10" DOOR AND DOOR FRAME MUST BE RECESSED TO COMPLY WITH 32" MIN. CLEAR WIDTH BETWEEN THE FACE OF THE DOOR AND THE STOP OF THE FRAME.

DESIGNER NOTE: (REMOVE BABY CHANGING TABLE IF NOT REQUIRED)

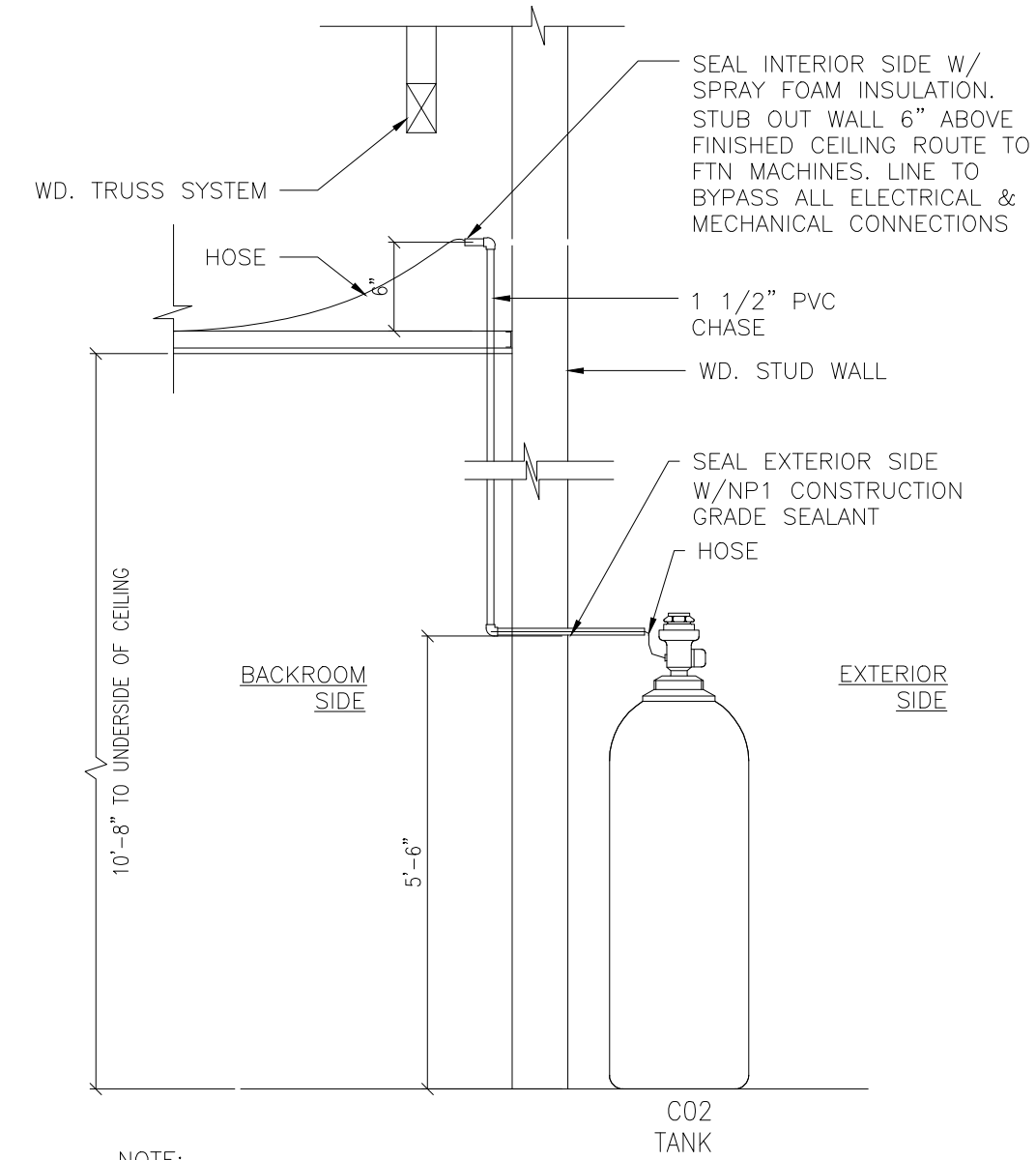
RESTROOM SIGN NOTE

SIGNS DENOTING THE RESTROOMS SHALL INCLUDE LETTERS AND NUMERALS THAT ARE LOCATED 48 INCHES MINIMUM ABOVE THE FINISH FLOOR, MEASURED FROM THE BASELINE OF THE LOWEST TACTILE CHARACTER AND 60 INCHES MAXIMUM ABOVE THE FINISH FLOOR MEASURED FROM THE BASELINE OF THE HIGHEST TACTILE CHARACTER. MOUNTING LOCATION FOR THE SIGN SHALL BE SO THAT A PERSON MAY APPROACH WITHIN 3 INCHES OF THE SIGN WITHOUT ENCOUNTERING PROTRUDING OBJECTS OR STANDING WITHIN THE SWING OF THE DOOR.

NOTES:
A. SEE ROOM FINISH SCHEDULE ON SHEET A1.2.
B. SEE EQUIPMENT SCHEDULE ON SHEETS A1.4 AND A1.5.
C. SEE DETAIL 5/A3.3 FOR RESTROOM TYPICAL WALL TILE PATTERN.
D. SEE SHEET A3.3 FOR RESTROOM ELEVATIONS AND DETAILS.

1 DIMENSIONED FLOOR PLAN

SCALE: 3/16" = 1'-0"



NOTE:

SERVICE HOSE SHALL BE FLEXIBLE POLYOLEFIN HOSE FOR MEDIUM PRESSURE SERVICE (STYLE 540P), COMPLIANT WITH FDA TITLE 21 FOR FOOD CONTACT, AND HAVE A MAXIMUM WORKING PRESSURE OF 2000 PSI.

ALL PIPING, REGULATORS, AND PRESSURE REGULATORS SHALL BE KEPT TIGHT TO PREVENT LEAKAGE OF ANY CO2 GASES, AS PER NFPA-55:7.3.1.3.1 (2016 EDITION)

CO2 SHALL BE EQUIPPED W/ AN EMERGENCY SHUT-OFF DEVICE, AS PER NFPA 55:7.3.1.1 (2016 EDITION)

3 CO2 CHASE LINE DETAIL

SCALE: N.T.S.

WALL TYPES

- WALL TYPE 'A', SEE 3/A9.1
- WALL TYPE 'B', SEE 6/A9.1
- WALL TYPE 'C', SEE 9/A9.1
- WALL TYPE 'D', SEE 12/A9.1
- WALL TYPE 'E', SEE 11/A9.1
- WALL TYPE 'F', SEE 10/A9.1 & 7/A9.1

GENERAL NOTES

- INTERIOR DIMENSIONS SHOWN ARE TO INTERIOR WALL FINISH, UNLESS OTHERWISE NOTED.
- EXTERIOR DIMENSIONS SHOWN ARE TO FACE OF SHEATHING, UNLESS OTHERWISE NOTED.
- SEE SHEETS A1.4 AND A1.5 FOR EQUIPMENT.
- COORDINATE ALL DIMENSIONS IN AREAS OF WALK-IN COOLERS WITH EQUIPMENT INSTALLERS.
- INSTALL FULL THICKNESS ACOUSTICAL BATT INSULATION CONTINUOUS TO ROOF DECK IN ALL WALL SEPARATING REST ROOMS FROM ADJACENT CONVENIENCE STORE AREAS. INSULATION TO BE NON-COMBUSTIBLE, BEARING THE U.L. CLASSIFICATION MARKING.
- BRACE STUDS ABOVE CEILING AS REQUIRED TO PROVIDE RIGID WALLS THROUGHOUT, SEE STRUCTURAL DRAWINGS.
- ALL CABINETS IN FOOD OFFERING AREA, INCLUDING COFFEE BAR AND SALES COUNTER, TO HAVE SOLID TOP WITH METAL SIDES PAINTED AND KICK PLATE BASE PAINTED "BLACK".
- USE FDA APPROVED FOOD GRADE CLEAR CAULKING BETWEEN COUNTERTOPS AND WALLS AND WHERE REQUIRED PER LOCAL AND COUNTY HEALTH DEPARTMENT REQUIREMENTS.
- GENERAL CONTRACTOR SHALL COORDINATE WITH THE EQUIPMENT AND DRYWALL INSTALLERS TO ENSURE THAT ALL ELECTRICAL WIRING, WATER LINES AND REFRIGERATION LINES HAVE BEEN INSTALLED PROPERLY ON ALL EQUIPMENT PRIOR TO THE HANGING OF ANY DRYWALL, SEE THE CIRCLE K PROJECT MANAGER FOR ANY EQUIPMENT LOCATION CLARIFICATIONS.
- PROVIDE 5/8" MOISTURE-RESISTANT GYPSUM WALLBOARD BEHIND COOLER/FREEZER, RESTROOMS, BEHIND 3-COMP SINK, BEHIND FRONT-COUNTER UNDER-GLASS, MOP SINK AND HOT WATER HEATER.
- SEE SHEET A1.2 FOR ROOM FINISH SCHEDULE.
- SEE SHEETS A3.1, A3.2, AND A3.3 FOR INTERIOR ELEVATIONS.

LEGEND

- 2X6 WOOD STUD AT 16" O.C. WITH BATT INSULATION
- 2X WOOD STUD AT 16" O.C. WITHOUT INSULATION (REFER TO FLOOR PLAN (PLASTER LOCATION))
- 6" 20ga. METAL STUD AT 16" O.C. WITH BATT INSULATION. SEE SHEET A1.3 FOR WALL TYPES
- 3 5/8" 20ga. METAL STUD AT 16" O.C. (WITH BATT INSULATION IF APPLICABLE) SEE SHEET A1.3 FOR WALL TYPES
- 3 5/8" 20ga. METAL STUD AT 16" O.C. TO DECK WITH BATT INSULATION. SEE SHEET A1.3 FOR WALL TYPES
- 3-5/8" METAL STUD FURRED WALL (WHERE OCCURS) AT 16" O.C.
- FIBER CEMENT WAINSCOT/ PLASTER
- PRE-MANUFACTURED FREEZER/COOLER WALL
- F.R.P. PANELING, SEE KEYNOTES & SHT. A3.2
- 3/4" FIB. PLYWOOD W/ F.R.P. PANELING, SEE KEYNOTES 37 & SHT. A3.2
- WINDOW TYPE: SEE WINDOWS SCHEDULE SHEET A6.0
- DOOR TYPE: SEE DOOR SCHEDULE SHEET A6.0

PAINTED SURFACES PREPARATION NOTES

- DRYWALL - INTERIOR/EXTERIOR**
- DRYWALL MUST BE CLEAN AND DRY. ALL NAIL HEADS MUST BE SET AND SPACKLED, JOINTS MUST BE TAPED AND COVERED WITH A JOINT COMPOUND, SPACKLED NAIL HEADS AND TAPE JOINTS MUST BE SANDED SMOOTH AND ALL DUST REMOVED PRIOR TO PAINTING.
- EXTERIOR SURFACES MUST BE SPACKLED WITH EXTERIOR GRADE COMPOUNDS.
- STEEL - SOLVENT CLEANING**
- SOLVENT CLEANING IS A METHOD FOR REMOVING ALL VISIBLE OIL, GREASE, SOIL, DRAWING AND CUTTING COMPOUNDS, AND OTHER SOLUBLE CONTAMINANTS. SOLVENT CLEANING DOES NOT REMOVE RUST OR MILL SCALE.
- CHANGE RAGS AND CLEANING SOLUTION FREQUENTLY SO THAT DEPOSITS OF OIL AND GREASE ARE NOT SPREAD OVER ADDITIONAL AREAS IN THE CLEANING PROCESS. BE SURE TO ALLOW ADEQUATE VENTILATION.
- WOOD - INTERIOR**
- ALL FINISHING LUMBER AND FLOORING MUST BE STORED IN DRY, WARM ROOMS TO PREVENT ABSORPTION OF MOISTURE, SHRINKAGE, AND ROUGHENING OF THE WOOD.
- ALL SURFACES MUST BE SANDED SMOOTH, WITH THE GRAIN, NEVER ACROSS IT.
- SURFACE BLEMISHES MUST BE CORRECTED AND THE AREA CLEANED OF DUST BEFORE COATING.

PAINT TYPE SPECIFICATION NOTES

- ALL INTERIOR NON-METAL SURFACES TO BE PAINTED SHALL BE PRIMED WITH SHERWIN WILLIAMS - ProMar200 Zero VOC Interior Latex Primer
- ALL INTERIOR METAL SURFACES TO BE PAINTED SHALL BE PRIMED WITH SHERWIN WILLIAMS - Pro Industrial Pro-Cry@Universal Acrylic Primer
- ALL INTERIOR SURFACES TO BE PAINTED SHALL BE PAINTED WITH SHERWIN WILLIAMS - Duration Home@Interior Acrylic Latex Paint

** SEE SHEET A2.1 "EXTERIOR ELEVATIONS" FOR PAINT TYPE SELECTION OF EXTERIOR WALLS **



COPYRIGHT NOTICE
This drawing is the property of the above referenced Professional and is not to be used for any purpose other than the specific project and site named herein, and cannot be reproduced in any manner without the express written permission from the Professional

06/05/20 PROTOTYPE 5200
09/18/20 REVISION 1

PROFESSIONAL SEAL

PROFESSIONAL IN CHARGE
ARCH. PROF. IN CHARGE
PROJECT MANAGER
ARCH. PM
QUALITY CONTROL
ARCH. QC
DRAWN BY
ARCH. DRAWN

PROJECT NAME
CIRCLE K STORES INC. 5200 WOOD

CITY
US STATE

ADDRESS LINE 1
ADDRESS LINE 2
ADDRESS LINE 3



CIRCLE K STORES INC.

PROJECT NUMBER

SHEET TITLE

DIMENSIONED FLOOR PLAN, WALL TYPES AND ENLARGED RESTROOM

SHEET NUMBER

A1.3

