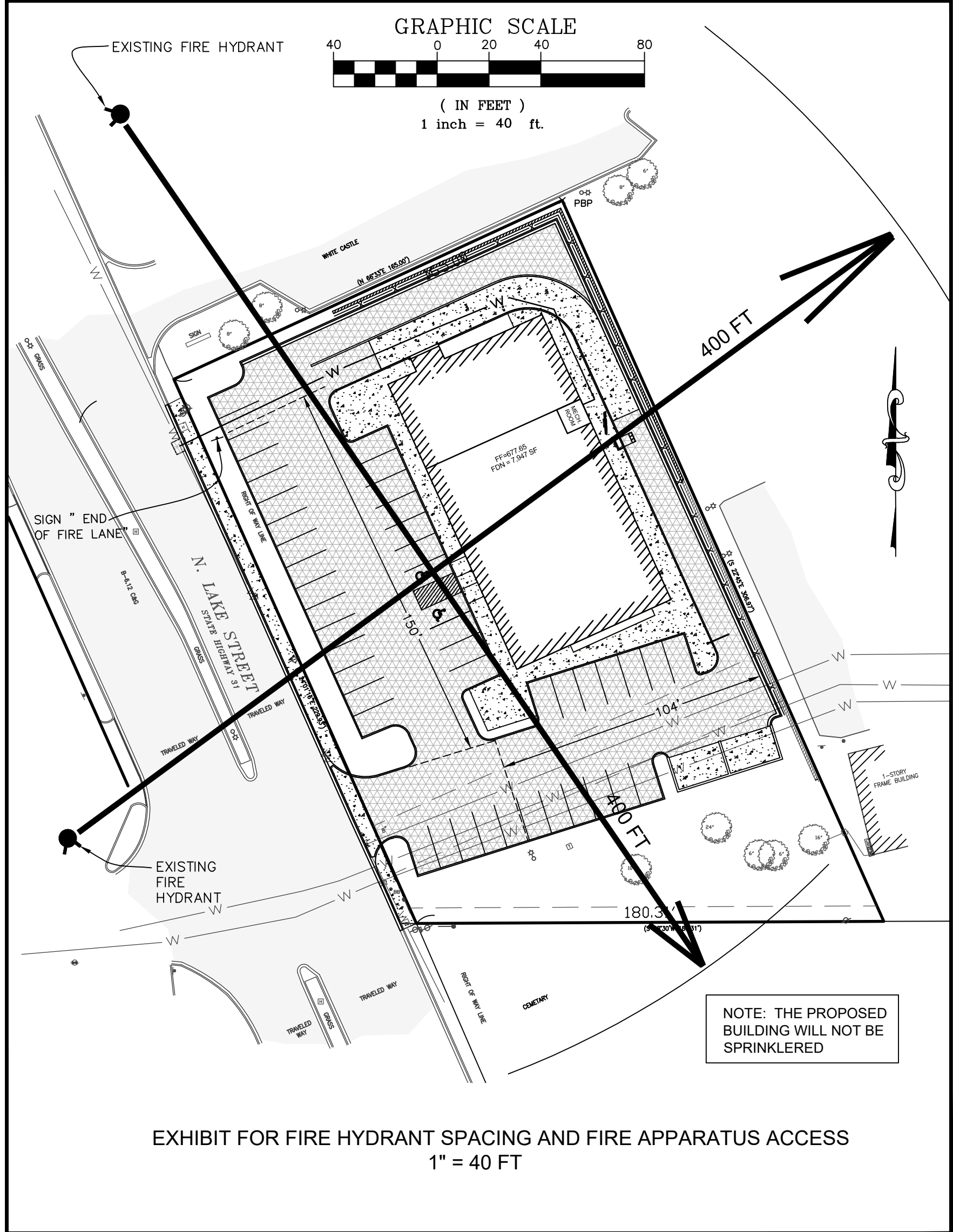


FIRE ACCESS PLAN – 1165 N. LAKE STREET

FOR:
GLAZIER PROJECT LLC
1406 W. FULTON STREET, SUITE A2
CHICAGO, ILLINOIS 60607



GRAPHIC SCALE
(IN FEET)
1 inch = 20 ft.

LEGEND

EXISTING		PROPOSED
—>—	UNDERDRAIN	—U—
—D—	SANITARY SEWER	—S—
—W—	STORM SEWER	—T—
—X—	WATER MAIN	—W—
—G—	FENCE	—X—
—T—	GAS	—G—
—E—	TELEPHONE	—T—
—OH—	ELECTRIC	—E—
—	OVERHEAD WIRES	—
—	FLARED END	—
—	MANHOLE	—
—	INLET	—
—	CATCH BASIN	—
—	CLEANOUT	—
—	SANITARY SERVICE	—
—	SUMP CONNECTION	—
—	WATER VALVE	—
—	VALVE VAULT	—
—	HYDRANT	—
—	WATER SERV. W/B-BOX	—
—	PIPE CAP	—
—	UTILITY POLE	—
—	STREET LIGHT	—
—	UTILITY POLE WITH LIGHT	—
—	GAS VALVE	—
—	SIGN	—
—	WELL	—
—	STORM STRUCTURE NUMBER	(10)
—	SANITARY STRUCTURE NUMBER	(B)
—	BARRIER CURB	—
—	B-6.12 CURB	—
—	HANDICAP RAMP	—
—	CONCRETE DRIVEWAY / SIDEWALK	—
—	BITUMINOUS PAVEMENT	—
—	AGGREGATE PAVEMENT	—
—	GRASS	—

FIRE ACCESS PLAN DATA TABLE	
a.) BUILDING HEIGHT	23.6 FEET
b.) SQUARE FOOTAGE OF BUILDING	7,950 SQ FT
c.) NON SPRINKLERED. GENERAL CONTRACTOR SHALL FURNISH AND INSTALL FIRE ALARM SYSTEMS PER TENANT DOCUMENTS IF REQUIRED BY CODE.	
d.) THE SHELL BUILDING WILL BE COMPRISED OF RETAIL AND RESTAURANT USE. STORAGE AND INTERIOR MATERIAL INFORMATION IS NOT KNOWN. PROSPECTIVE TENANTS WILL SUBMIT INTERIOR BUILD OUT PLANS AT A LATER DATE.	

M: \2019\19276\DWG. 19276\19276 FIRE- ACCESS.DWG 3/24/2020 5:25 PM

NO.	DATE	DESCRIPTION
REVISIONS		

THIS DOCUMENT AND THE IDEAS AND DESIGNS INCORPORATED HEREIN, AS AN INSTRUMENT OF PROFESSIONAL SERVICE, IS THE PROPERTY OF MCBRIDE ENGINEERING, INC. AND IS NOT TO BE USED IN WHOLE OR IN PART, FOR ANY OTHER PROJECT WITHOUT WRITTEN AUTHORIZATION OF MCBRIDE ENGINEERING, INC.

DO NOT SCALE DRAWINGS. USE DIMENSIONS ONLY.

CONTRACTOR SHALL BE RESPONSIBLE FOR VERIFYING ALL DIMENSIONS.

INFORMATION HEREON AND HEREIN IS CONFIDENTIAL.

MCBRIDE ENGINEERING, INC.

CIVIL ENGINEERS & SURVEYORS

ILLINOIS PROFESSIONAL DESIGN FIRM #184-000803

1820 Ridge Road, Suite 202
Homewood, IL 60430
708-799-1350

FIRE ACCESS PLAN

PROPOSED RETAIL DEVELOPMENT
1165 N. LAKE STREET
AURORA, IL 60505

PROJECT NO.
19276

SHEET
1

OF 1