

AURORA POCKET PARK PROJECT

331-339 PLUM STREET

AURORA, ILLINOIS

INDEX TO DRAWINGS

1. COVER
2. GENERAL NOTES & DETAILS
3. EXISTING CONDITION PLAN
4. PROPOSED PLAN
5. DETAILS
6. LANDSCAPE PLAN
7. LANDSCAPE DETAILS



LOCATION MAP

PREPARED FOR:

CITY OF AURORA
ALDERMAN MIKE SEVILLE, 6TH WARD
60 EAST DOWNER PLACE
PHONE: (630) 256-3020
FAX: (630) 256-3059

PRIMARY CONTACTS:

COMMONWEALTH EDISON: SAM SMITH(800) 333-3313
AT&T: JAMES SHORTS (800) 111-2234
CABLE TV: BLANCH JONES (800) 328-6399

SOURCE BENCHMARK:
 CITY OF AURORA CONTROL MONUMENT #11 S 3.0' NORTHEAST OF UTILITY POLE AT SOUTHEAST CORNER OF PENNSYLVANIA AVENUE AND COLORADO AVENUE.

ELEV: 686.75 (NAVD 88) (CITY OF AURORA DATUM)

SITE BENCHMARK:
 NORTHWEST FLANGE BOLT OF FIRE HYDRANT AT SOUTHWEST CORNER OF GRAND AVENUE & PLUM STREET.

ELEV: 689.297 (NAVD 88) (CITY OF AURORA DATUM)



ENGINEERING RESOURCE ASSOCIATES, INC.
 CONSULTING ENGINEERS, SCIENTISTS & SURVEYORS

3S701 WEST AVENUE, SUITE 150
 WARRENVILLE, ILLINOIS 60555
 PHONE (630) 393-3060
 FAX (630) 393-2152

- 501 W. STATE STREET, SUITE 203 GENEVA, ILLINOIS 60134
 PHONE 630.262.8689, FAX 630.262.8698
- 10 S. RIVERSIDE PLAZA, SUITE 1800 CHICAGO, ILLINOIS 60606
 PHONE 312.683.0110, FAX 312.474.6099
- 3002 CROSSING COURT CHAMPAIGN, ILLINOIS 61822
 PHONE 217.351.6268, FAX 217.355.1902

It's smart It's free It's the law

Call before you dig
800.892.0123

 **Martin Design Partnership, Ltd.**

335 N. River Street
 Suite 201
 Batavia, Illinois 60510
 PHONE (630) 482-2532

John F. Mayer, P.E.
 IL. P.E. NO. 062-047345
 Expires November 30, 2013

ORIGINAL SUBMITTAL: JANUARY 30, 2013

ERA JOB NO.: 120304

GENERAL NOTES:

- AT LEAST TWO WORKING DAYS PRIOR TO THE COMMENCEMENT OF ALL PHASES OF WORK, THE CONTRACTOR SHALL NOTIFY THE FOLLOWING:
CITY OF AURORA: (630) 256-3730
ENGINEERING RESOURCE ASSOC.: (630) 393-3060
- UTILITY INFORMATION IS BASED UPON FIELD MEASUREMENTS AND BEST AVAILABLE RECORDS. FIELD DATA IS LIMITED TO THAT WHICH IS VISIBLE AND CAN BE MEASURED. THIS DOES NOT PRECLUDE THE EXISTENCE OF OTHER UNDERGROUND UTILITIES.
- THE CONTRACTOR SHALL NOTIFY J.U.L.I.E. (1-800-892-0123) 48 HOURS PRIOR TO ANY EXCAVATION WORK TO DETERMINE THE EXACT LOCATION OF EXISTING UTILITIES.
- EXCEPT WHERE MODIFIED BY THE CONTRACT DOCUMENTS, ALL WORK SHALL BE IN ACCORDANCE WITH THE LATEST EDITION OF THE FOLLOWING DOCUMENTS: "STANDARD SPECIFICATIONS FOR ROAD AND BRIDGE CONSTRUCTION IN THE STATE OF ILLINOIS", ILLINOIS DEPARTMENT OF TRANSPORTATION, LATEST EDITION. "STANDARD SPECIFICATIONS FOR WATER AND SEWER MAIN CONSTRUCTION IN ILLINOIS", LATEST EDITION. "PROCEDURES AND STANDARDS FOR URBAN SOIL EROSION CONTROL AND SEDIMENTATION CONTROL IN ILLINOIS", NORTHEASTERN ILLINOIS SOIL EROSION AND SEDIMENTATION CONTROL STEERING COMMITTEE, AND "DUPAGE COUNTY COUNTYWIDE STORMWATER AND FLOODPLAIN ORDINANCE", LATEST EDITION. "CITY OF WHEATON SUBDIVISION REGULATIONS, CONSTRUCTION AND DESIGN STANDARDS".
- THE CONTRACTOR SHALL BE RESPONSIBLE FOR THE INSTALLATION AND MAINTENANCE OF ADEQUATE SIGNS AND WARNING DEVICES TO INFORM AND PROTECT THE PUBLIC. "THE MANUAL ON UNIFORM TRAFFIC CONTROL DEVICES FOR STREETS AND HIGHWAYS", AS ADOPTED BY THE ILLINOIS DEPARTMENT OF TRANSPORTATION, LATEST EDITION, SHALL BE CONSULTED. APPROPRIATE CONTROL METHODS SHOULD BE APPLIED TO THE SPECIFIC SITUATIONS AND TYPES OF CONSTRUCTION OPERATIONS BEING PERFORMED.
- UNLESS WRITTEN AUTHORIZATION IS OBTAINED FROM THE CITY ENGINEER, ALL OPENINGS IN ANY PAVEMENT OR TRAVELED WAY SHALL BE BACKFILLED PRIOR TO THE END OF THE WORKING DAY.
- THE CONTRACTOR SHALL ESTABLISH THE NECESSARY PERFORMANCE BONDS REQUIRED. PERMITS SHALL BE OBTAINED FROM ALL OUTSIDE GOVERNMENTAL AGENCIES HAVING JURISDICTION PRIOR TO INITIATION OF CONSTRUCTION ACTIVITIES.
- THE CONTRACTOR IS RESPONSIBLE FOR HAVING THE MOST RECENT SET OF THE "APPROVED" FINAL ENGINEERING PLANS WITH THE LATEST REVISION DATE ON THE JOB SITE PRIOR TO THE START OF CONSTRUCTION AND WILL BE RESPONSIBLE FOR ANY DAMAGE TO THE SAME.
- THE CONTRACTOR SHALL RESTORE OFF-SITE SURFACES TO ORIGINAL CONDITION IF DAMAGED BY CONSTRUCTION.
- THE CONTRACTOR IS TO PROVIDE THE CITY ENGINEER WITH RECORD DRAWINGS OF ALL UTILITIES SHOWING LOCATIONS OF ALL SEWER PIPE, MAINS, SERVICE STUBS, AND STRUCTURES.
- THE ENGINEER WILL NOT BE RESPONSIBLE FOR THE CONTRACTOR'S MEANS, METHODS, TECHNIQUES, SEQUENCES, OR PROCEDURES OF CONSTRUCTION, OR THE SAFETY PRECAUTIONS AND PROGRAMS INCIDENT THERETO, AND THE ENGINEER WILL NOT BE RESPONSIBLE FOR THE CONTRACTOR'S FAILURE TO PERFORM OR FURNISH THE WORK IN ACCORDANCE WITH THE CONTRACT DOCUMENTS.
- THE ENGINEER WARRANTS THE DESIGN, RECOMMENDATIONS, AND SPECIFICATIONS TO HAVE BEEN PROMULGATED ON CONDITIONS GENERALLY ENCOUNTERED WITHIN THE INDUSTRY. THE ENGINEER ASSUMES NO RESPONSIBILITY WHATSOEVER, WITH RESPECT TO THE DESIGN, RECOMMENDATIONS AND SPECIFICATIONS, FOR COMPLEX OR UNUSUAL SOIL CONDITIONS ENCOUNTERED ON THE PROJECT. IT SHALL BE THE OWNER'S/BIDDER'S RESPONSIBILITY TO ASCERTAIN THE EXACT NATURE OF SUBSURFACE CONDITIONS PRIOR TO THE CONSTRUCTION OF THE IMPROVEMENT.
- ALL TRENCHES CAUSED BY THE CONSTRUCTION OF SEWERS, WATERMANS, WATER SERVICE PIPES AND IN EXCAVATIONS AROUND CATCH BASINS, MANHOLES, INLETS, AND OTHER APPURTENANCES WHICH OCCUR WITHIN TWO FEET OF THE LIMITS OF EXISTING AND PROPOSED IMPROVEMENTS, SIDEWALKS, AND CURB AND GUTTERS SHALL BE BACKFILLED WITH TRENCH BACKFILL (AS DEFINED IN SECTION 208 OF THE STANDARD SPECIFICATIONS FOR ROAD AND BRIDGE CONSTRUCTION.)

PAVEMENT, SIDEWALK, AND CURB & GUTTER:

- PAVEMENT THICKNESS SHALL COMPLY WITH THE CITY OF AURORA REQUIREMENTS.
- HANDICAPPED RAMPS AND DEPRESSED CURBS SHALL BE PROVIDED WHEREVER SIDEWALK INTERSECTS CURB IN ACCORDANCE WITH IDOT SPECIFICATIONS.
- PRIOR TO PLACING ANY PAVEMENT MATERIAL, THE CONTRACTOR IS RESPONSIBLE FOR PROPERLY PREPARING AND COMPACTING THE SUBGRADE. BOTH THE CURB AND GUTTER AND PAVEMENT BASE COURSE SHALL BE PROOF-ROLLED WITH A FULLY-LOADED DUMP TRUCK. THE ENGINEER SHALL BE NOTIFIED AT LEAST 24 HOURS BEFORE PROOF-ROLLING. ADDITIONAL PROOF-ROLLS MAY BE NECESSARY TO VERIFY THAT ANY UNSTABLE AREAS HAVE BEEN REPAIRED. NO PAVEMENT MATERIAL IS TO BE PLACED ON A WET OR SOFT SUBGRADE. DEVELOPER'S/OWNER'S MATERIAL TESTING AGENT SHALL ALSO WITNESS PROCEDURE TO MAKE AND CERTIFY REPAIRS IN WRITING.
- ALL EXISTING PAVEMENT OR CONCRETE TO BE REMOVED SHALL BE SAWCUT TO A NEAT EDGE ALONG LIMITS OF PROPOSED REMOVAL BEFORE REMOVAL OPERATIONS BEGIN.
- IF PERMEABLE PAVERS ARE USED, THE MANUFACTURER SHALL PROVIDE SPECIFICATIONS.

SOIL EROSION CONTROL PLAN:

- ALL EROSION CONTROL MEASURES ARE TO BE IN PLACE BEFORE ANY WORK BEGINS ON SITE.
- STOCKPILE SHALL NOT BE LOCATED IN SPECIAL MANAGEMENT AREAS.
- WHERE FENCING IS USED, THE CONDITION OF THE FENCE SHALL BE CHECKED AT MINIMUM EVERY OTHER WEEK, OR AFTER EVERY RAINSTORM THAT MIGHT PRODUCE RUNOFF, DAMAGED OR DETERIORATED ITEMS SHALL BE REPLACED AND MAINTAINED IN AN EFFECTIVE CONDITION.
- ANY STORM WATER DRAINAGE STRUCTURES THAT HAVE THE POTENTIAL TO ACCEPT RUNOFF CONTAINING SUSPENDED SOIL PARTICLES SHALL BE SURROUNDED WITH SILT FENCE, OR INSTALL A FILTER BASKET.
- ALL SILT FENCING SHALL REMAIN IN PLACE UNTIL ALL DISTURBED EARTH HAS BEEN PAVED OR VEGETATED, AND SHALL ALSO BE CHECKED AT REGULAR INTERVALS TO MAINTAIN THEIR EFFECTIVENESS IN TERMS OF TOTAL CONTACT WITH THE EARTH BELOW.
- AS EACH PHASE ON THE ENTIRE SITE IS COMPLETED, SILT FENCE ARE TO BE REMOVED AND THE ENTIRE AREA EITHER SODDED OR SEEDED AFTER SEDIMENT HAS BEEN REDISTRIBUTED. IF WEATHER CONDITIONS ARE SUCH THAT SEEDING WOULD NOT BE EFFECTIVE, THEN THE STOCK PILES SHOULD BE EITHER MULCHED OR COVERED AND GRADED SO THAT ALL SEDIMENT FROM EROSION WILL BE CONFINED WITHIN THE BOUNDARIES OF THE SITE.
- SEEDING SHALL BE DONE PER "STANDARDS AND SPECIFICATIONS FOR SOIL EROSION AND SEDIMENT CONTROL", BY THE ILLINOIS ENVIRONMENTAL PROTECTION AGENCY DIVISION OF WATER POLLUTION CONTROL, LATEST EDITION AND DUPAGE COUNTY STORM WATER CONTROL ORDINANCE.
- TO PREVENT SOIL FROM LEAVING THE SITE ON CONSTRUCTION VEHICLE WHEELS, STABILIZED CONSTRUCTION WORK ENTRANCES SHALL BE CONSTRUCTED OF GRAVEL AND SHALL EXTEND AT LEAST 100 FEET INTO THE JOB SITE. THE EXISTING PAVEMENT SURFACES SHALL BE INSPECTED DAILY FOR SOIL DEBRIS AND SHALL BE CLEANED WHEN NECESSARY.
- IT SHALL BE THE CONTRACTOR'S RESPONSIBILITY TO PROPERLY DISPOSE OF ANY EXCESS EXCAVATED MATERIAL.
- TOPSOIL STOCK PILES SHALL BE PROTECTED. IF A STOCKPILE IS TO REMAIN IN PLACE FOR MORE THAN THREE DAYS, THEN SEDIMENT & EROSION CONTROL SHALL BE PROVIDED FOR SUCH STOCKPILE.
- IT IS THE RESPONSIBILITY OF THE CONTRACTOR TO MAINTAIN ALL THE SEDIMENTATION CONTROL MEASURES. INSPECTIONS SHALL BE CONDUCTED AFTER A RAIN EVENT, AND IF MAINTENANCE OF THE STRUCTURES IS NECESSARY, INCLUDING REPAIR OF DAMAGE AND REMOVAL OF DEPOSITS OR SEDIMENT FROM VEGETATIVE FILTERS, IT SHALL BE DONE BY THE CONTRACTOR.

SITE GRADING:

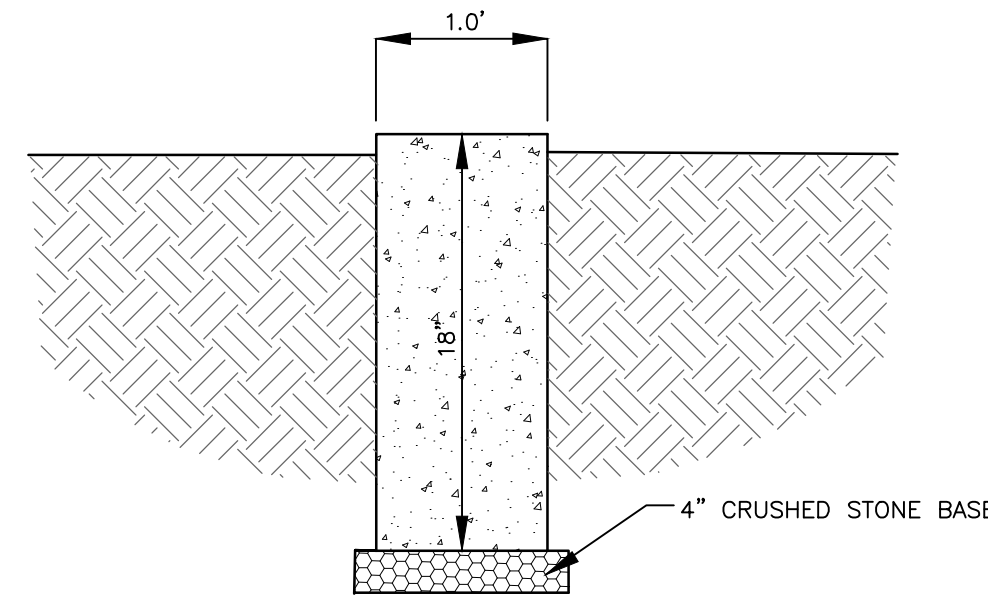
- EXCAVATION OF TOPSOIL AND OTHER STRUCTURALLY UNSUITABLE MATERIALS MAY REQUIRE EARTH EXCAVATION AND COMPACTED EARTH FILL MATERIAL IN ORDER TO ACHIEVE THE PLAN SUBGRADE ELEVATIONS.
- PLACEMENT OF THE EXCAVATED MATERIAL SHALL BE IN AREAS DESIGNATED BY THE OWNER FOR FUTURE USE, WITHIN AREAS TO BE LANDSCAPED, AND THOSE AREAS NOT REQUIRING STRUCTURAL FILL MATERIAL.
- COMPACTION OF THE EXCAVATED MATERIAL PLACED IN AREAS NOT REQUIRING STRUCTURAL FILL SHALL BE MODERATE.
- EXCESS MATERIALS, IF NOT UTILIZED AS FILL OR STOCKPILED FOR FUTURE LANDSCAPING, SHALL BE COMPLETELY REMOVED FROM THE CONSTRUCTION SITE AND DISPOSED OF BY THE CONTRACTOR.
- EXCAVATION OF EARTH AND OTHER MATERIALS WHICH ARE SUITABLE FOR USE AS STRUCTURAL FILL: THE EXCAVATION SHALL BE TO WITHIN A TOLERANCE OF 0.3" +/- OF THE PLAN SUBGRADE ELEVATIONS. THE TOLERANCE WITHIN PAVEMENT AREAS SHALL BE SUCH THAT THE EARTH MATERIAL SHALL BALANCE AS PART OF THE FINE GRADING OPERATION.
- PLACEMENT AND COMPACTION OF MATERIALS SHALL CONFORM TO I.D.O.T. SPECIFICATIONS.
- THE CONTRACTOR SHALL MAINTAIN PROPER SITE DRAINAGE AT ALL TIMES DURING THE COURSE OF CONSTRUCTION AND PREVENT STORM WATER FROM RUNNING INTO OR STANDING IN EXCAVATED AREAS.
- PAYMENT FOR THE REMOVAL OF UNSUITABLE MATERIAL (EXCLUDING TOPSOIL EXCAVATION) SHALL BE BASED ON THE QUANTITIES AS FIELD MEASURED BY THE ENGINEER. THE CONTRACTOR SHALL PROVIDE AS PART OF HIS BID A UNIT PRICE PER CUBIC YARD FOR THE REMOVAL OF UNSUITABLE MATERIAL. SAID UNIT PRICE SHALL INCLUDE THE COMPLETE REMOVAL OF THE MATERIAL, REPLACEMENT WITH A SUITABLE MATERIAL OBTAINED BY THE CONTRACTOR FROM A BORROW SOURCE, AND COMPACTION TO THE REQUIRED SPECIFICATION OF THE CITY.

DATE OF CONSTRUCTION:

IT IS ANTICIPATED THAT CONSTRUCTION WILL BEGIN IN THE SUMMER 2013.

PLAN OF OPERATION:

- INSTALL EROSION CONTROL ITEMS.
- SITE GRADING
- SITE CONSTRUCTION
- SITE RESTORATION

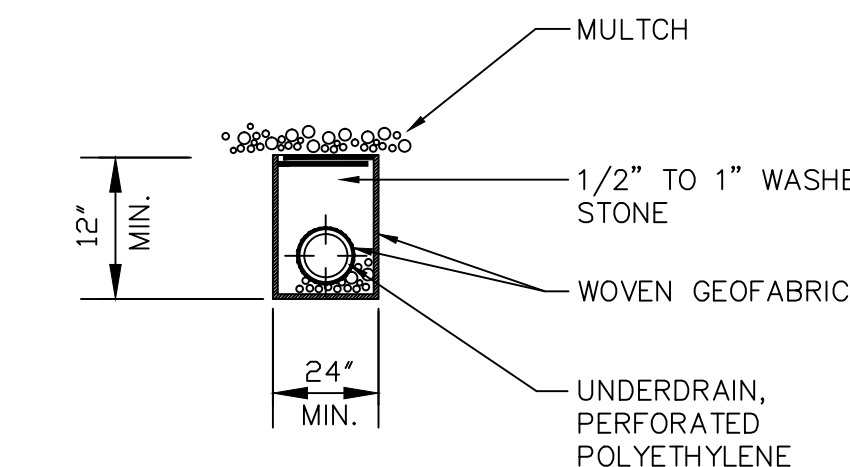


NOTES:

- THE CONCRETE SHALL CONFORM TO SECTION 1020 AND SHALL BE A SIX (6) BAG MIXTURE WITH A 5-INCH SLUMP AND SHALL DEVELOP A MINIMUM OF 3,500 PSI COMPRESSIVE STRENGTH AT 14 DAYS.
- PLACEMENT WILL NOT BE PERMITTED UNLESS THE TEMPERATURE IS 28° AND RISING. NO CHLORIDE ADDITIVE WILL BE PERMITTED IN THE CONCRETE.
- CONTROL JOINTS SHALL BE INSTALLED AT 5 FOOT CENTERS.
- PREMOULDED FIBER EXPANSION JOINTS SHALL BE INSTALLED AT 100 FOOT CENTERS MAXIMUM OR WHERE THE RIBBON ABUTS SIDEWALK OR OTHER SIDEWALK, OR AT THE END OF EACH POUR.
- THE SIDEWALK SHALL HAVE A BROOM FINISH.

1-Ft. CONCRETE RIBBON DETAIL

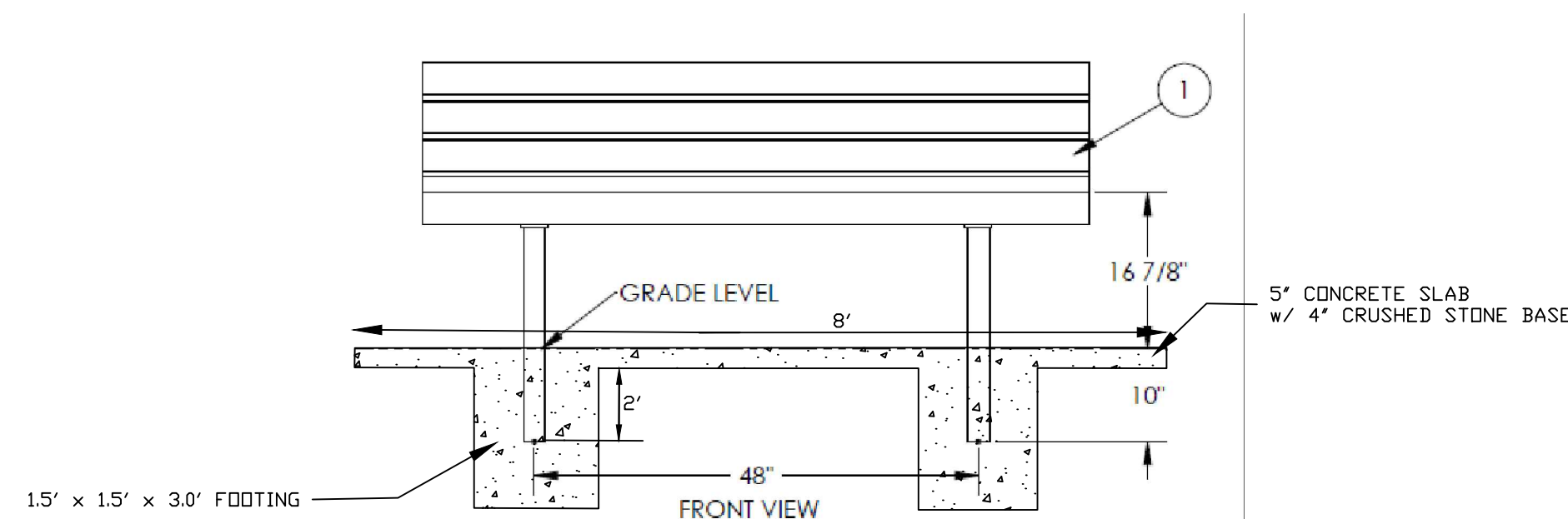
NOT TO SCALE



PIPE UNDERDRAIN SPECIAL DETAIL

NO SCALE

NOTE: TO BE PLACED ADJACENT TO PROPOSED CONCRETE RIBBON
* TO BE CONNECTED INTO PROPOSED STORM SEWER

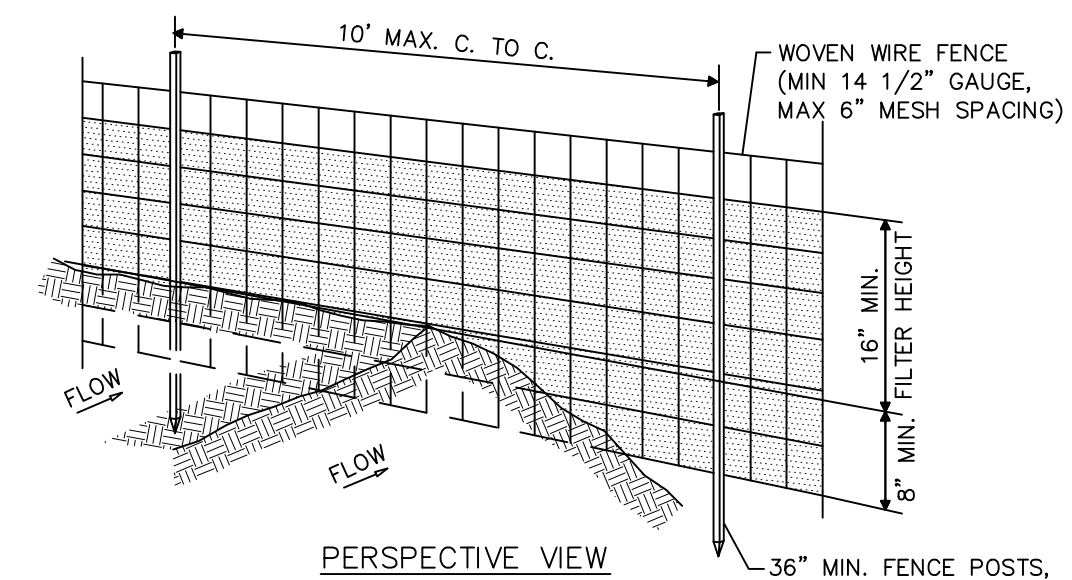


NOTES:

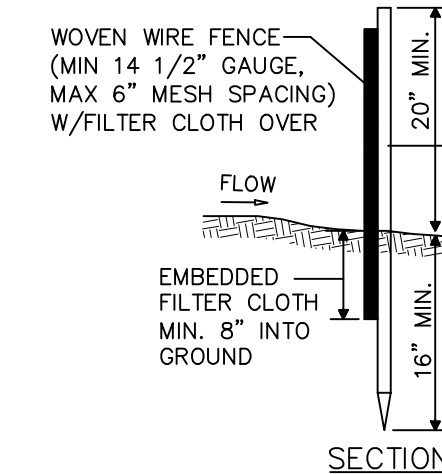
- CONTRACTOR TO PROVIDE CITY-APPROVED 6' LONG, BACKED, PARK BENCH WITH POSTS TO BE EMBEDDED IN CONCRETE FOOTINGS
- THE CONCRETE SHALL CONFORM TO SECTION 1020 AND SHALL BE A SIX (6) BAG MIXTURE WITH A 5-INCH SLUMP AND SHALL DEVELOP A MINIMUM OF 3,500 PSI COMPRESSIVE STRENGTH AT 14 DAYS.
- PLACEMENT WILL NOT BE PERMITTED UNLESS THE TEMPERATURE IS 28° AND RISING. NO CHLORIDE ADDITIVE WILL BE PERMITTED IN THE CONCRETE.
- CONTROL JOINTS SHALL BE INSTALLED AT 5 FOOT CENTERS.
- PREMOULDED FIBER EXPANSION JOINTS SHALL BE INSTALLED AT 100 FOOT CENTERS MAXIMUM OR WHERE THE PAD ABUTS SIDEWALK OR AT THE END OF EACH POUR.

PARK BENCH DETAIL

NOT TO SCALE



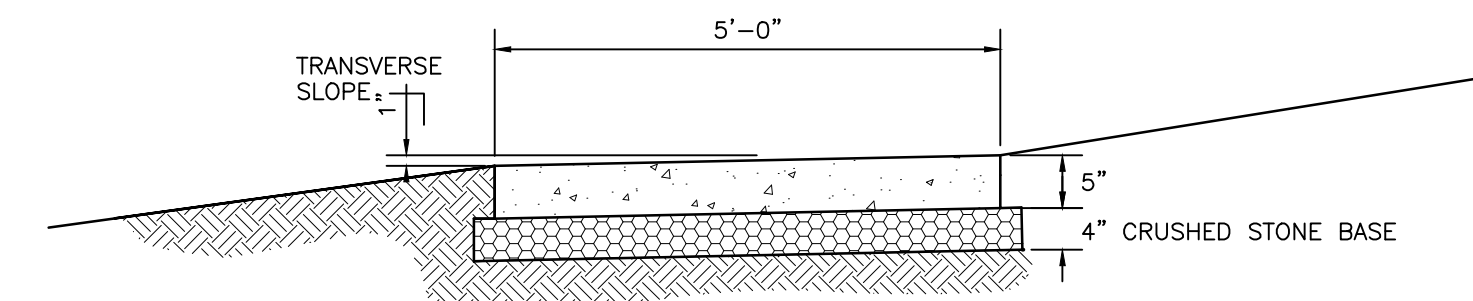
PERSPECTIVE VIEW



SILT FENCE

NOT TO SCALE

- WOVEN WIRE FENCE TO BE FASTENED SECURELY TO FENCE POSTS WITH TIES OR STAPLES.
 - FILTER CLOTH TO BE FASTENED SECURELY TO WOVEN WIRE FENCE WITH TIES SPACED EVERY 24" AT TOP AND MID SECTION.
 - WHEN TWO SECTIONS OF FILTER CLOTH ADJOIN EACH OTHER THEY SHALL BE OVER-LAPPED BY SIX INCHES AND FOLDED.
 - MAINTENANCE SHALL BE PERFORMED AS NEEDED AND MATERIAL REMOVED WHEN BULGES DEVELOP IN THE SILT FENCE.
- POSTS: STEEL EITHER T OR U TYPE OR 2" HARDWOOD.
FENCE: WOVEN WIRE, 14-1/2" GA. 6" MAX. MESH OPENING
FILTER CLOTH: FILTER X, MIRAFI 100X, STABILUNKA T140N.
PREFABRICATED UNIT: GEOFAB, ENVIROFENCE.



NOTES:

- THE CONCRETE SIDEWALK SHALL BE CONSTRUCTED IN ACCORDANCE WITH SECTION 424 OF THE STANDARD SPECIFICATIONS FOR ROAD AND BRIDGE CONSTRUCTION.
- THE CONCRETE SHALL CONFORM TO SECTION 1020 AND SHALL BE A SIX (6) BAG MIXTURE WITH A 5-INCH SLUMP AND SHALL DEVELOP A MINIMUM OF 3,500 PSI COMPRESSIVE STRENGTH AT 14 DAYS.
- THE SIDEWALK PORTION OF THE DRIVEWAY SHALL BE 5-INCHES THICK AND SHALL BE REINFORCED WITH FIBER MESH ADDITIVE.
- PLACEMENT WILL NOT BE PERMITTED UNLESS THE TEMPERATURE IS 28° AND RISING. NO CHLORIDE ADDITIVE WILL BE PERMITTED IN THE CONCRETE.
- SIDEWALK AT INTERSECTIONS SHALL BE DEPRESSED AND TEXTURED IN ACCORDANCE WITH THE AMERICANS WITH DISABILITIES ACT. THE MAXIMUM ALLOWABLE SLOPE IS 1:20.
- CONTROL JOINTS SHALL BE INSTALLED AT 5 FOOT CENTERS.
- PREMOULDED FIBER EXPANSION JOINTS SHALL BE INSTALLED AT 100 FOOT CENTERS MAXIMUM OR WHERE THE SIDEWALK ABUTS CURB OR OTHER SIDEWALK, OR AT THE END OF EACH POUR.
- THE SIDEWALK SHALL HAVE A BROOM FINISH.

CONCRETE SIDEWALK DETAIL

NOT TO SCALE

REVISIONS:	DATE	BY	DESCRIPTION	DATE	BY	DESCRIPTION

DRAWN BY: B.L.
CHECKED BY: M.M.
APPROVED BY: J.M.



ENGINEERING RESOURCE ASSOCIATES, INC.
CONSULTING ENGINEERS, SCIENTISTS & SURVEYORS
35701 WEST AVENUE, SUITE 150
WARRENVILLE, ILLINOIS 60555
PHONE: (630) 393-3060
FAX: (630) 393-2152

- 501 W. STATE STREET, SUITE 203 GENEVA, ILLINOIS 60134
PHONE 630.262.8689, FAX 630.262.8698
- 10 S. RIVERSIDE PLAZA, SUITE 1800 CHICAGO, ILLINOIS 60606
PHONE 312.683.0110, FAX 312.474.6999
- 3002 CROSSING COURT CHAMPAIGN, ILLINOIS 61822
PHONE 217.351.6208, FAX 217.355.1902

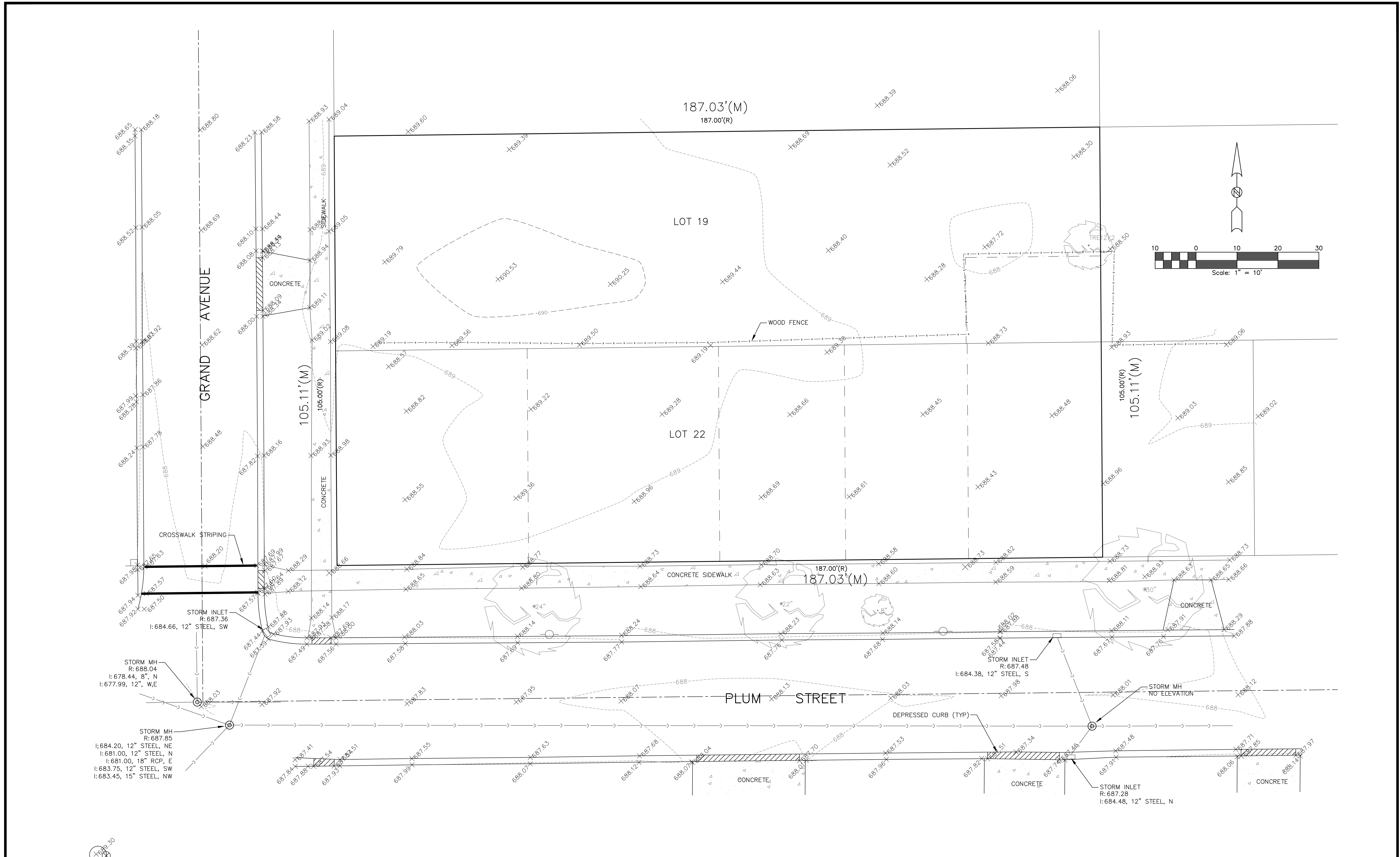


Martin Design Partnership, Ltd.
335 N. River Street
Suite 201
Batavia, Illinois 60510
PHONE (630) 482-2532

TITLE:

**AURORA PARKS PROJECT
PLUM STREET
GENERAL NOTES & DETAILS**

SCALE: N.T.S.
DATE: JAN. 2012
JOB NO: 120304
SHEET 2 OF 7



REVISIONS:					
DATE	BY	DESCRIPTION	DATE	BY	DESCRIPTION

DRAWN BY: R.T.
 CHECKED BY: M.M.
 APPROVED BY: J.M.

ENGINEERING RESOURCE ASSOCIATES, INC.
 CONSULTING ENGINEERS, SCIENTISTS & SURVEYORS
 35701 WEST AVENUE, SUITE 150
 WARRENVILLE, ILLINOIS 60555
 PHONE (630) 393-3060
 FAX (630) 393-2152

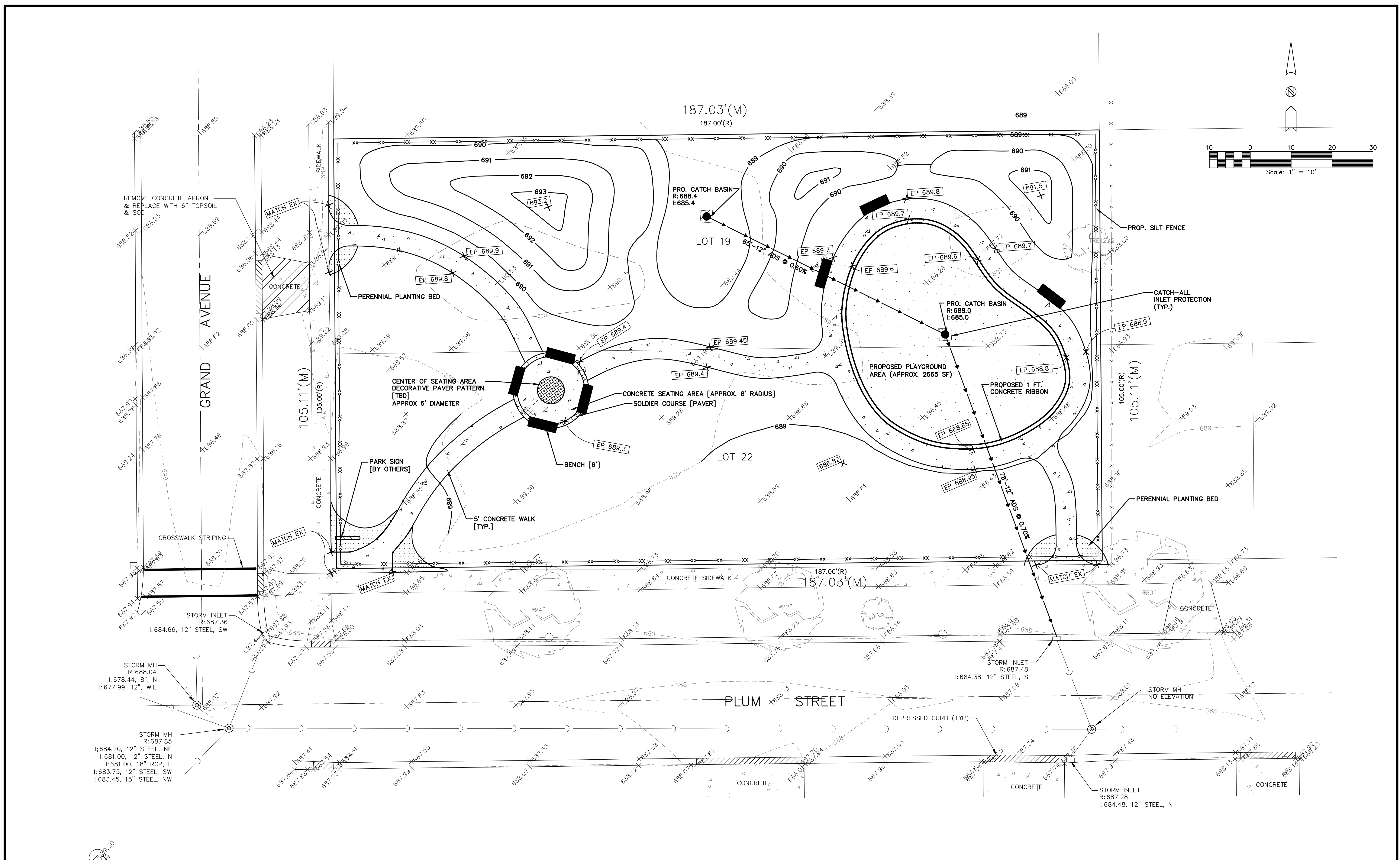
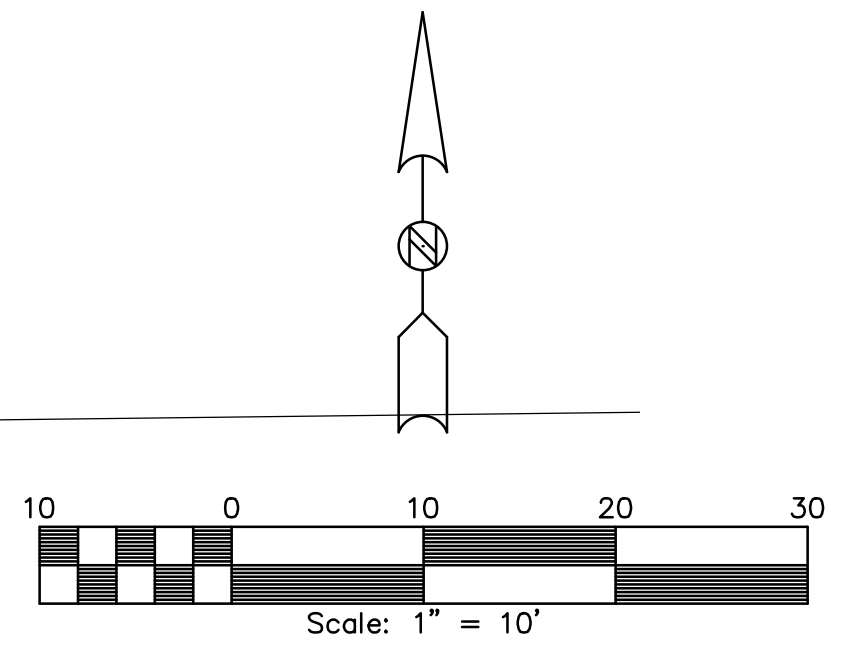
501 W. STATE STREET, SUITE 203 GENEVA, ILLINOIS 60134
 PHONE 630.262.8689, FAX 630.262.8698
 10 S. RIVERSIDE PLAZA, SUITE 1800 CHICAGO, ILLINOIS 60606
 PHONE 312.485.0100, FAX 312.474.6999
 3002 CROSSING COURT CHAMPAIGN, ILLINOIS 61822
 PHONE 217.351.6268, FAX 217.355.1902

Martin Design Partnership, Ltd.
 335 N. River Street
 Suite 201
 Batavia, Illinois 60510
 PHONE (630) 482-2532

TITLE: **AURORA PARKS PROJECT
 PLUM STREET
 EXISTING CONDITIONS**

SCALE: 1"=10'
 DATE: JULY 2012
 JOB NO: 120304
 SHEET 3 OF 7

\\Erasnap.Drive_JA\Martin Design Partnership, Ltd\120304 Aurora Park Projects\CADD\120304_Sheet 3.dwg Updated by: Sleplich 2/25/2013



REVISIONS:					
DATE	BY	DESCRIPTION	DATE	BY	DESCRIPTION

DRAWN BY: B.L.
 CHECKED BY: M.M.
 APPROVED BY: J.M.



ENGINEERING RESOURCE ASSOCIATES, INC.
 CONSULTING ENGINEERS, SCIENTISTS & SURVEYORS
 35701 WEST AVENUE, SUITE 150
 WARRENVILLE, ILLINOIS 60555
 PHONE (630) 393-3060
 FAX (630) 393-2152

- 501 W. STATE STREET, SUITE 203 GENEVA, ILLINOIS 60134
PHONE 630.262.8689, FAX 630.262.8698
- 10 S. RIVERSIDE PLAZA, SUITE 1800 CHICAGO, ILLINOIS 60606
PHONE 312.683.0110, FAX 312.474.6099
- 3002 CROSSING COURT CHAMPAIGN, ILLINOIS 61822
PHONE 217.351.6268, FAX 217.355.1902



Martin Design Partnership, Ltd.
 335 N. River Street
 Suite 201
 Batavia, Illinois 60510
 PHONE (630) 482-2532

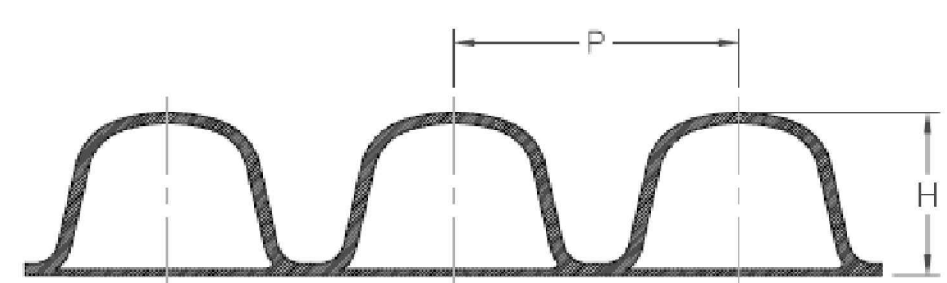
TITLE:
AURORA PARKS PROJECT
PLUM STREET
PROPOSED PLAN

SCALE: 1"=10'
DATE: JAN. 2012
JOB NO: 120304
SHEET 4 of 7

I:\Easnap\Drive_J\Martin Design Partnership, Ltd\120304 Aurora Park Projects\CADD\Sheet 4.dwg Updated by: blegich 2/25/2013

N-12 PROFILES

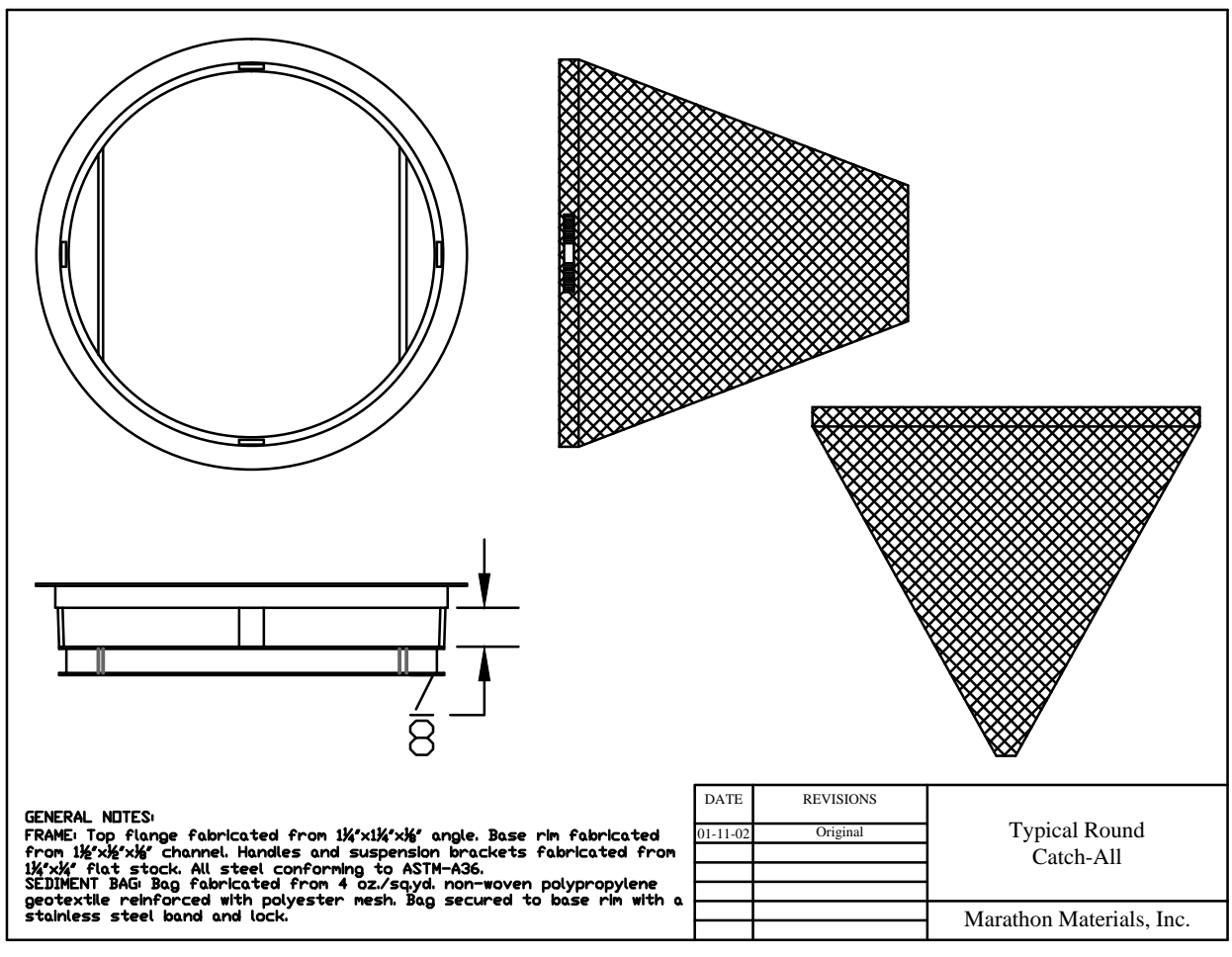
PIPE SIZE	INSIDE DIAMETER	OUTSIDE DIAMETER	PITCH, P	CORRUGATION HEIGHT, H
4 in (100 mm)	4.10 in (104 mm)	4.78 in (121 mm)	0.66 in (17 mm)	0.34 in (9 mm)
6 in (150 mm)	6.00 in (152 mm)	6.92 in (176 mm)	0.77 in (20 mm)	0.46 in (12 mm)
8 in (200 mm)	7.90 in (201 mm)	9.11 in (231 mm)	0.96 in (24 mm)	0.61 in (15 mm)
10 in (250 mm)	9.90 in (251 mm)	11.36 in (289 mm)	1.26 in (32 mm)	0.73 in (19 mm)
12 in (300 mm)	12.15 in (309 mm)	14.45 in (367 mm)	1.92 in (49 mm)	1.15 in (29 mm)
15 in (375 mm)	14.98 in (380 mm)	17.57 in (446 mm)	2.59 in (66 mm)	1.30 in (33 mm)
18 in (450 mm)	18.07 in (459 mm)	21.20 in (538 mm)	2.88 in (68 mm)	1.57 in (40 mm)
24 in (600 mm)	24.08 in (612 mm)	27.80 in (706 mm)	3.15 in * (80 mm)	1.86 in (47 mm)
30 in (750 mm)	30.00 in (762 mm)	35.10 in (892 mm)	4.12 in (105 mm)	2.55 in (65 mm)
36 in (900 mm)	36.00 in (914 mm)	41.70 in (1059 mm)	5.25 in (133 mm)	2.85 in (72 mm)
42 in (1050 mm)	41.40 in (1052 mm)	47.70 in (1212 mm)	5.19 in (132 mm)	3.15 in (80 mm)
48 in (1200 mm)	47.60 in (1209 mm)	53.60 in (1361 mm)	5.25 in (133 mm)	3.00 in (76 mm)
60 in (1500 mm)	59.50 in (1511 mm)	66.30 in (1684 mm)	6.00 in (152 mm)	3.40 in (86 mm)



* NOMINAL PITCH DIMENSION NOT APPLICABLE TO PIPE PRODUCED AT THE MADERA PLANT

		REVISIONS BY DATE	
DRAWN BY AWM	DATE 10.07.02	APPROVED BY AWM	DATE 10.07.02
DRAWING # 6075		MARATHON MATERIALS, INC.	

NOTE: ALL DIMENSIONS ARE NOMINAL



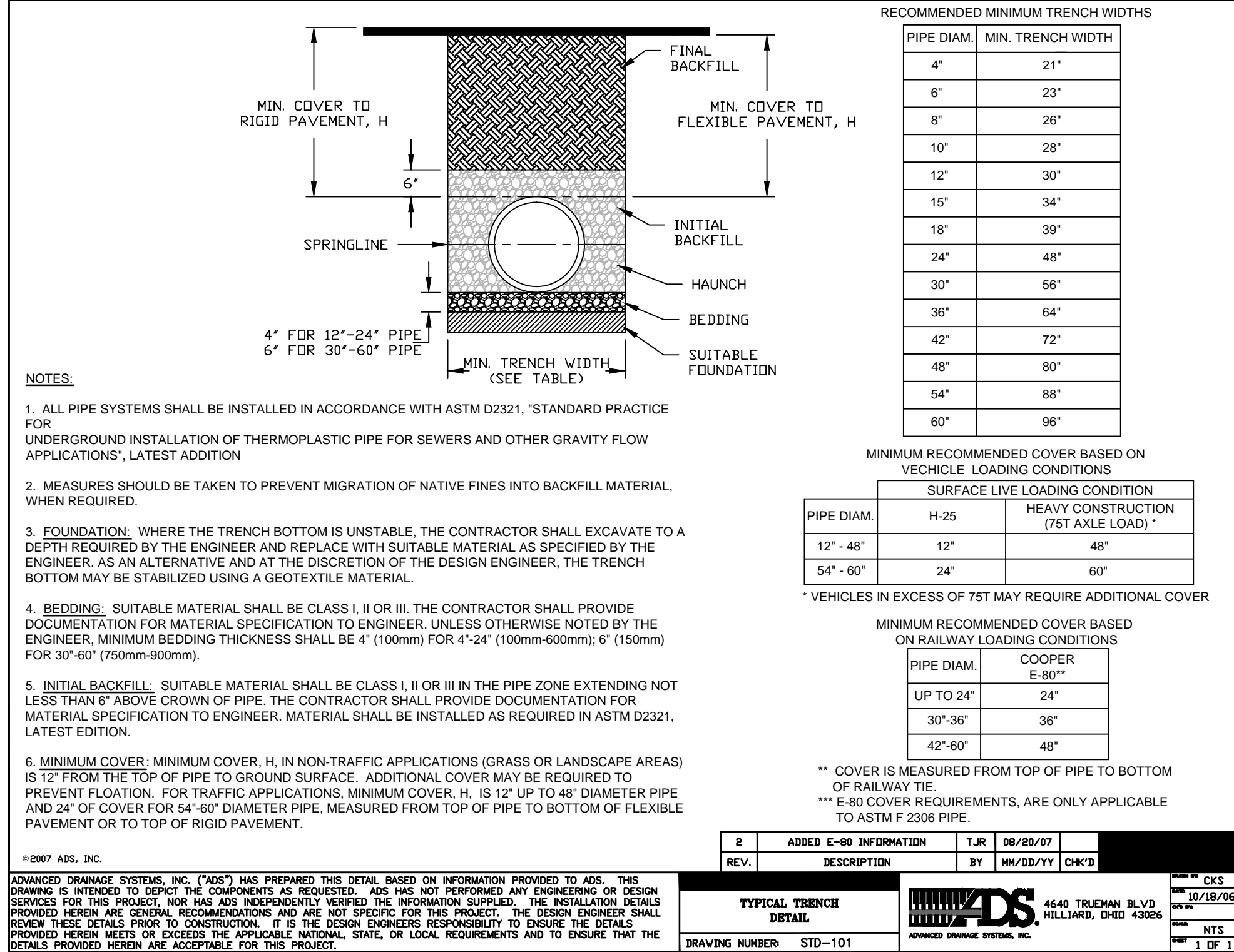
GENERAL NOTES: FRAME: Top Flange Fabricated from 1/2" x 1/4" x 1/4" angle. Base rim Fabricated from 1/2" x 1/4" x 1/4" channel. Handles and suspension brackets Fabricated from 1/2" x 1/4" x 1/4" steel. All steel conforming to ASTM-A36. SEDIMENT BAG: Fabricated from 4.5oz/yd² non-woven polypropylene geotextile reinforced with polyester mesh. Bag secured to base rim with a stainless steel band and lock.	DATE REVISIONS BY DATE	Typical Round Catch-All Marathon Materials, Inc.
--	------------------------------	---

SEDIMENT CONTROL, INLET FILTERS

Description: This work shall consist of the furnishing, installation, and removal of a drainage structure inlet filter assembly, consisting of a frame and filter bag, to collect sediment in surface stormwater runoff at locations shown on the plans or as directed by the Engineer.
 The Contractor shall inspect the work site and review the plans to determine the number and dimensions of the various types of drainage structure frames (circular and rectangular) into which the inlet filters will be installed prior to ordering materials.
 The drainage structure inlet filter assembly shall be installed under the grate on the lip of the drainage structure frame with the fabric bag hanging down into the drainage structure.
 The drainage structure inlet filter assembly shall remain in place until final removal of the assembly is directed by the Engineer. The drainage structure inlet filter assembly shall remain the property of the Contractor.
 Final removal of the assembly shall include the disposal of debris or silt that has accumulated in the filter bag at the time of final removal. Periodic cleaning of the filter shall be performed as outlined in the plans.

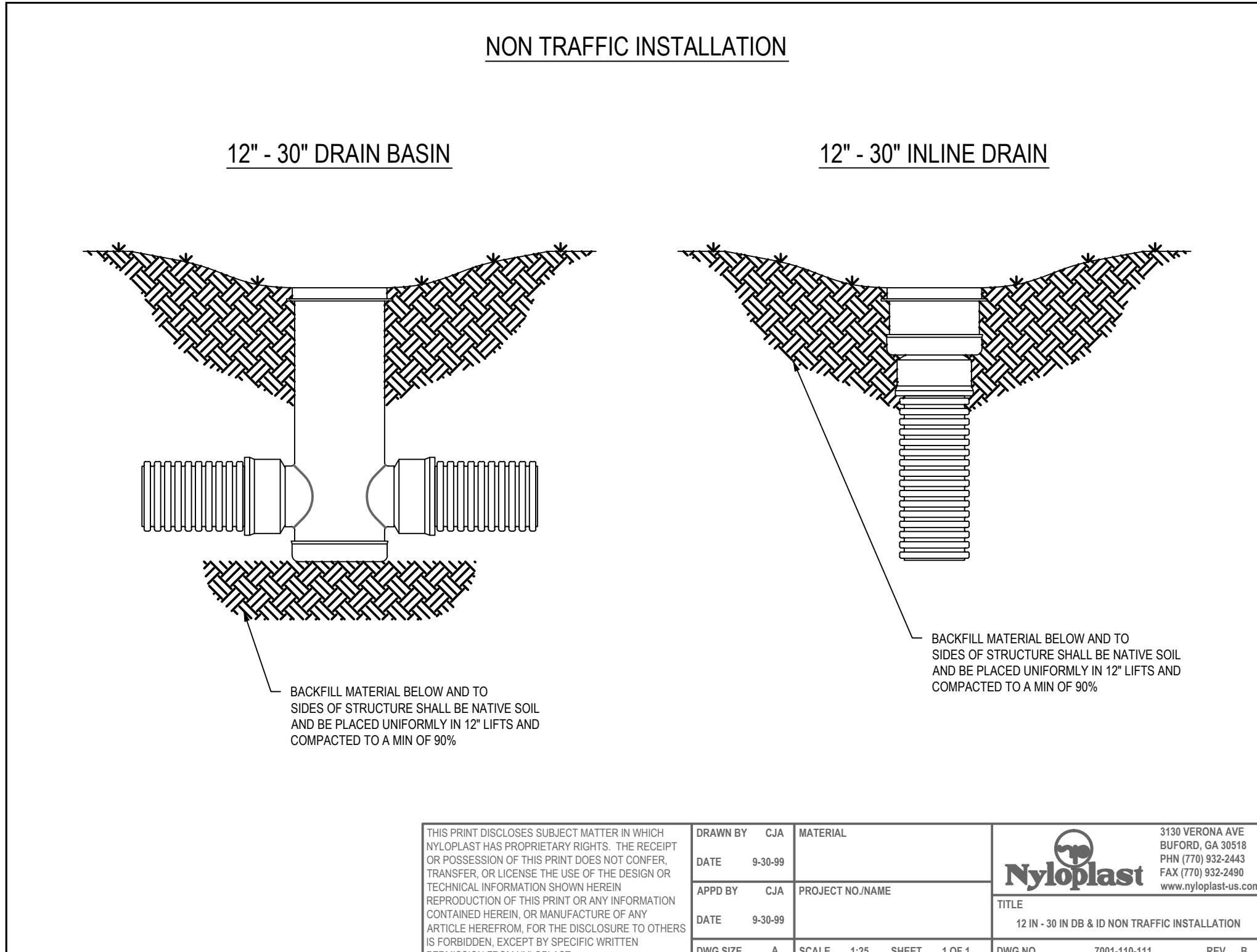
Materials: The drainage structure inlet filter shall be the "Catch-All Inlet Protector", as furnished by Marathon Materials, Inc., 25523 W. Schultz St., Plainfield, IL 60544, (800) 983-9493, or approved equal. A detail drawing in the plans depicts the drainage structure inlet filter assembly.
 The drainage structure inlet filter assembly consists of a steel frame with a replaceable geotextile fabric bag attached with a steel band with locking cap that is suspended from the frame. A clean used bag and a used steel frame in good condition, meeting the approval of the Engineer, may be substituted for new materials.
 The drainage structure inlet filter assembly frame shall be rigid steel meeting the requirements of ASTM-A36. The frame shall include an overflow feature that is welded to the frame's ring. The overflow feature shall be designed to allow full flow of water into the structure if the filter bag is filled with sediment. The dimensions of the assembly frame shall allow the drainage structure grate to fit into the inlet filter assembly frame opening. The assembly frame shall rest on the inside lip of the drainage structure frame for the full variety of existing and proposed drainage structure frames that are present on this contract.
 The drainage structure inlet filter assembly bag shall be constructed of a polypropylene geotextile fabric with a minimum weight of 4 ounces per square yard, a minimum flow rate of 145 gallons per minute per square foot, and designed for a minimum silt and debris capacity of 2 cubic feet. The filter bag shall be reinforced with an outer layer of polyester mesh fabric with a minimum weight of 4 ounces per square yard. The filter bag shall be suspended from the steel frame with a stainless steel band and locking cap. The inlet filter assembly frame shall not cause the drainage structure grate to extend higher than 1/8 inch above the drainage structure frame.

"CATCH-ALL" INLET FILTER DETAIL
 N.T.S.



- NOTES:**
- ALL PIPE SYSTEMS SHALL BE INSTALLED IN ACCORDANCE WITH ASTM D2321, "STANDARD PRACTICE FOR UNDERGROUND INSTALLATION OF THERMOPLASTIC PIPE FOR SEWERS AND OTHER GRAVITY FLOW APPLICATIONS", LATEST EDITION.
 - MEASURES SHOULD BE TAKEN TO PREVENT MIGRATION OF NATIVE FINES INTO BACKFILL MATERIAL, WHEN REQUIRED.
 - FOUNDATION:** WHERE THE TRENCH BOTTOM IS UNSTABLE, THE CONTRACTOR SHALL EXCAVATE TO A DEPTH REQUIRED BY THE ENGINEER AND REPLACE WITH SUITABLE MATERIAL AS SPECIFIED BY THE ENGINEER, AS AN ALTERNATIVE AND AT THE DISCRETION OF THE DESIGN ENGINEER, THE TRENCH BOTTOM MAY BE STABILIZED USING A GEOTEXTILE MATERIAL.
 - BEDDING:** SUITABLE MATERIAL SHALL BE CLASS I, II OR III. THE CONTRACTOR SHALL PROVIDE DOCUMENTATION FOR MATERIAL SPECIFICATION TO ENGINEER, UNLESS OTHERWISE NOTED BY THE ENGINEER. MINIMUM BEDDING THICKNESS SHALL BE 4" (100mm) FOR 4" x 24" (100mm x 600mm), 6" (150mm) FOR 30" x 60" (750mm x 900mm).
 - INITIAL BACKFILL:** SUITABLE MATERIAL SHALL BE CLASS I, II OR III IN THE PIPE ZONE EXTENDING NOT LESS THAN 6" ABOVE CROWN OF PIPE. THE CONTRACTOR SHALL PROVIDE DOCUMENTATION FOR MATERIAL SPECIFICATION TO ENGINEER. MATERIAL SHALL BE INSTALLED AS REQUIRED IN ASTM D2321, LATEST EDITION.
 - MINIMUM COVER:** MINIMUM COVER, H, IN NON-TRAFFIC APPLICATIONS (GRASS OR LANDSCAPE AREAS) IS 12" FROM THE TOP OF PIPE TO GROUND SURFACE. ADDITIONAL COVER MAY BE REQUIRED TO PREVENT FLOATION. FOR TRAFFIC APPLICATIONS, MINIMUM COVER, H, IS 12" UP TO 48" DIAMETER PIPE AND 24" OF COVER FOR 54"-60" DIAMETER PIPE, MEASURED FROM TOP OF PIPE TO BOTTOM OF FLEXIBLE PAVEMENT OR TO TOP OF RIGID PAVEMENT.

2 REV.	ADDED C-80 INFORMATION	T.J.R.	08/29/07	CHKS
TYPICAL TRENCH DETAIL				
DRAWING NUMBER: STD-101				



THIS PRINT DISCLOSES SUBJECT MATTER IN WHICH NYLOPLAST HAS PROPRIETARY RIGHTS. THE RECEIPT OR POSSESSION OF THIS PRINT DOES NOT CONFER, TRANSFER, OR LICENSE THE USE OF THE DESIGN OR TECHNICAL INFORMATION SHOWN HEREIN. REPRODUCTION OF THIS PRINT OR ANY INFORMATION CONTAINED HEREIN, OR MANUFACTURE OF ANY ARTICLE HEREFROM, FOR THE DISCLOSURE TO OTHERS IS FORBIDDEN, EXCEPT BY SPECIFIC WRITTEN PERMISSION FROM NYLOPLAST.	DRAWN BY: CJA DATE: 9-30-09 APP'D BY: CJA DATE: 9-30-09 DWG SIZE: A	MATERIAL: PROJECT NO./NAME: SCALE: 1:25 SHEET: 1 OF 1	3150 VERONA AVE BUFORD, GA 30518 PHN (770) 932-2443 FAX (770) 932-2490 www.nyloplast.com
--	---	--	--

REVISIONS:	DATE	BY	DESCRIPTION	DATE	BY	DESCRIPTION

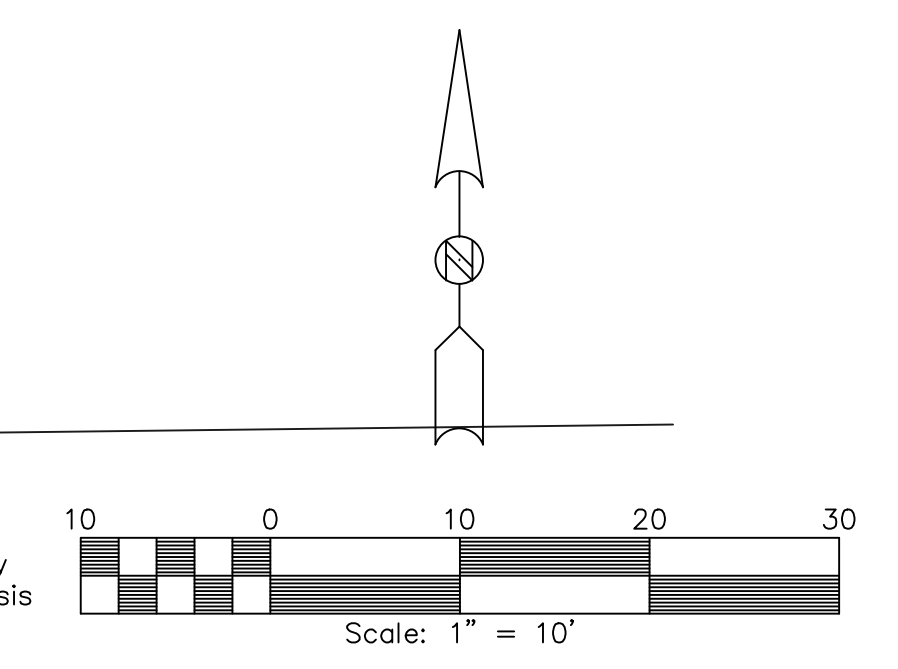
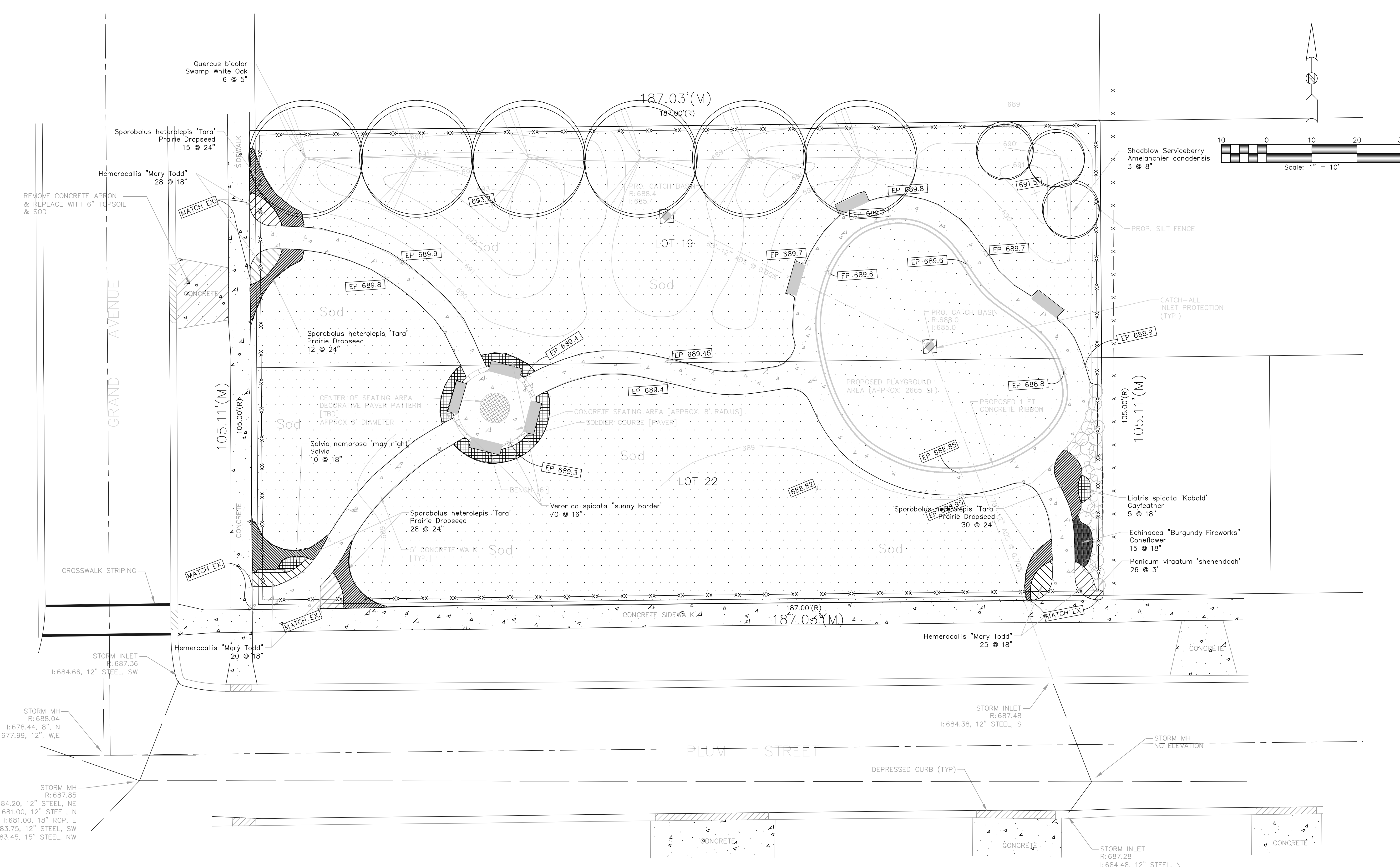
DRAWN BY: B.L.
 CHECKED BY: M.M.
 APPROVED BY: J.M.

ENGINEERING RESOURCE ASSOCIATES, INC.
 CONSULTING ENGINEERS, SCIENTISTS & SURVEYORS
 35701 WEST AVENUE, SUITE 150
 WARRENVILLE, ILLINOIS 60555
 PHONE (630) 393-3060
 FAX (630) 393-2152

Martin Design Partnership, Ltd.
 335 N. River Street
 Suite 201
 Batavia, Illinois 60510
 PHONE (630) 482-2532

**AURORA PARKS PROJECT
 PLUM STREET
 DETAILS**

SCALE: N.T.S.
 DATE: JAN. 2012
 JOB NO: 120304
 SHEET 5 OF 7



REVISIONS:

DATE	BY	DESCRIPTION	DATE	BY	DESCRIPTION

DRAWN BY: B.L.
 CHECKED BY: M.M.
 APPROVED BY: J.M.

ENGINEERING RESOURCE ASSOCIATES, INC.
 CONSULTING ENGINEERS, SCIENTISTS & SURVEYORS
 35701 WEST AVENUE, SUITE 150
 WARRENVILLE, ILLINOIS 60555
 PHONE (630) 393-3060
 FAX (630) 393-2152

- 501 W. STATE STREET, SUITE 203 GENEVA, ILLINOIS 60134
PHONE 630.262.8689, FAX 630.262.8698
- 10 S. RIVERSIDE PLAZA, SUITE 1800 CHICAGO, ILLINOIS 60606
PHONE 312.683.0110, FAX 312.474.6099
- 3002 CROSSING COURT CHAMPAIGN, ILLINOIS 61822
PHONE 217.351.6208, FAX 217.355.1902

Martin Design Partnership, Ltd.
 335 N. River Street
 Suite 201
 Batavia, Illinois 60510
 PHONE (630) 482-2532

TITLE: **AURORA PARKS PROJECT
 PLUM STREET
 LANDSCAPE PLAN**

SCALE: 1"=10'
 DATE: JAN. 2012
 JOB NO: 120304
 SHEET 6 OF 7

GENERAL NOTES

- Quantity lists are supplied as a convenience. The Contractor shall verify all quantities.
- Landscape Contractor shall verify locations of all underground utilities prior to digging. Contact "J.U.L.I.E" (Joint Utility Locating for Excavators) 1-800-892-0123.
- Planting beds shall be elevated slightly to provide for proper drainage. Rootballs of trees shall be elevated above finished grade as illustrated on installation details. All grading shall provide slopes which are smooth, continuous and have positive drainage in all areas. Should the Landscape Contractor encounter drainage problems which may be detrimental to the growth of the specified plant materials, the Owner shall be notified accordingly, prior to installation.
- Plant material shall be nursery grown and be either ball and burlapped or container grown. Sizes indicated on plant list represent minimum requirements. The requirements for measurement, branching and ball size shall conform to the "American Standard for Nursery Stock" (latest edition) by the American Association of Nurserymen, Inc. Plant materials for groupings or where symmetry is critical, shall be matched as nearly as possible.
- Contractor to install plants in areas as indicated after approval of planting bed limits and locations by the Owner or Owner's representative.
- Trees shall be obtained from Kaneville Tree Farms 34630-557-2793 1/8 or approved equal.

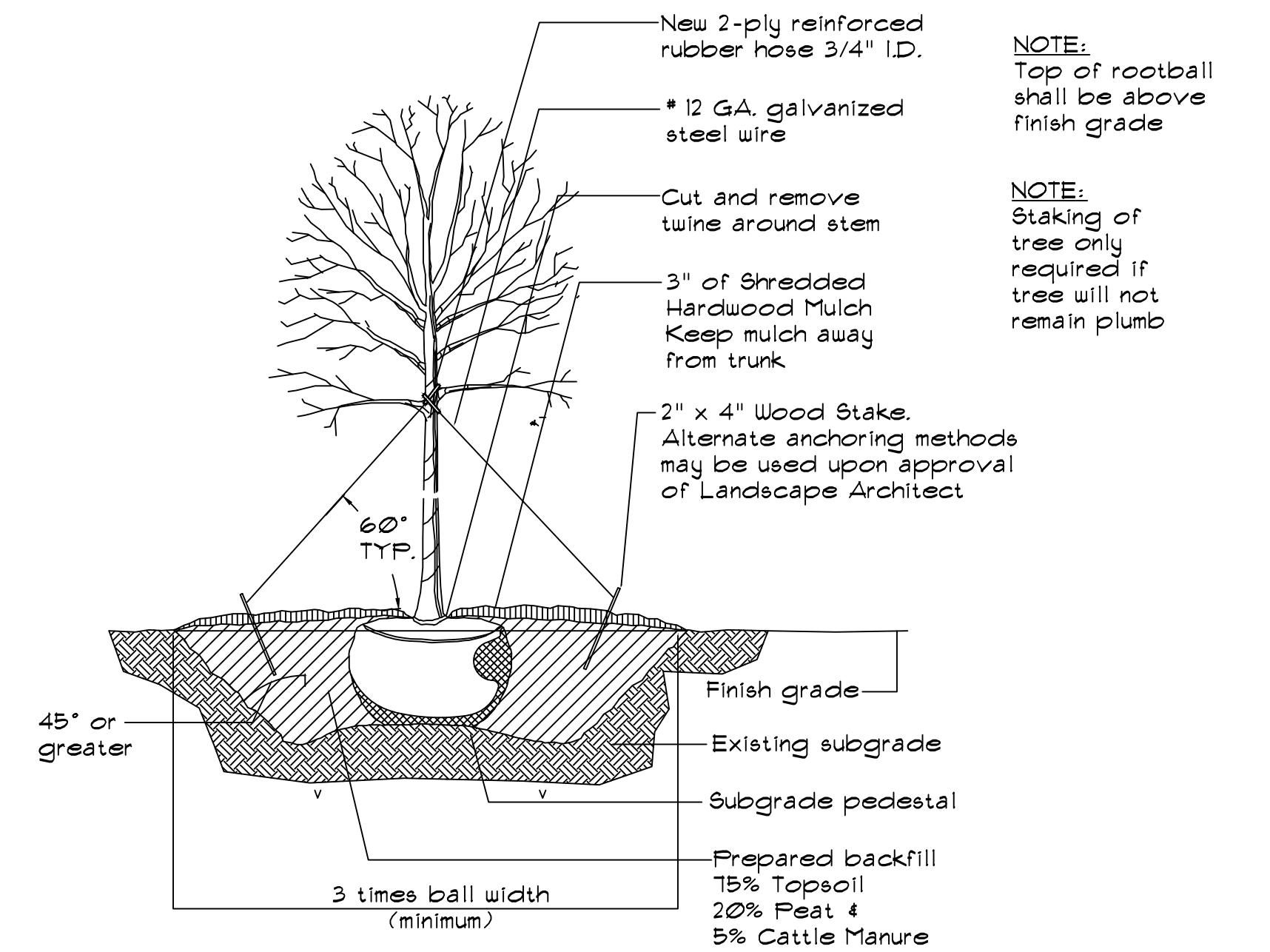
Plant List

KEY	QUAN	BOTANIC NAME	COMMON NAME	SIZE
DECIDUOUS SHADE TREES				
	6	<i>Quercus bicolor</i>	Swamp White Oak	5" BB

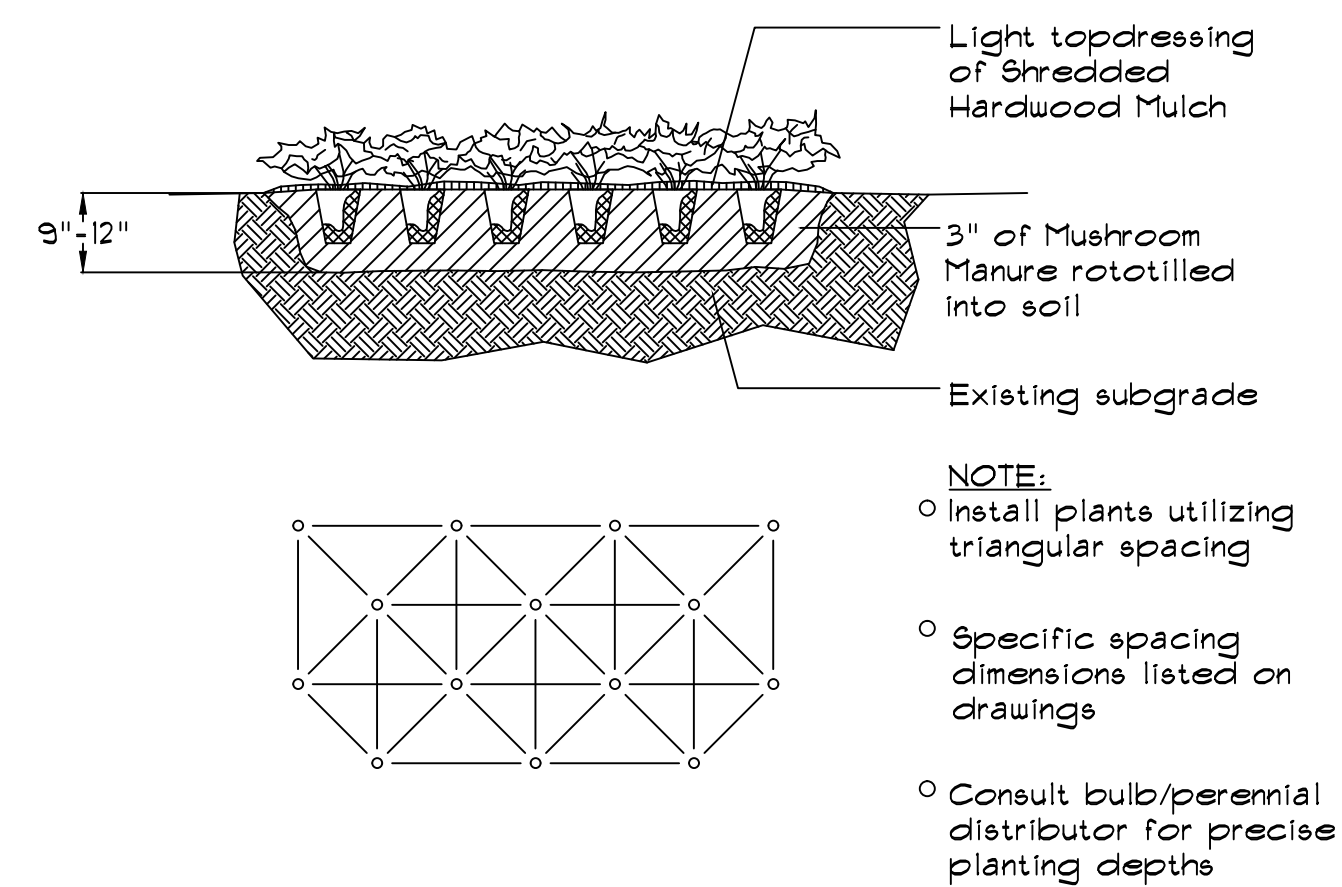
ORNAMENTAL TREES				
	3	<i>Amelanchier canadensis</i>	Shadblow Serviceberry	8' BB
		* * Multi-stem, clump form		

PERENNIALS, ORNAMENTAL GRASSES & GROUNDCOVERS				
	73	<i>Hemerocallis 'Mary Todd'</i>	Happy Returns Daylily	1 Gal.
	15	<i>Echinacea 'Burgandy Fireworks'</i>	Burgandy Fireworks Coneflower	1 Gal.
	26	<i>Panicum virgatum 'shenandoah'</i>	Switch Grass 'shenandoah'	1 Gal.
	5	<i>Liatris spicata 'kobold'</i>	Kobold Gayfeather	1 Gal.
	10	<i>Salvia n. 'Mainacht'</i>	May Night Sage	1 Gal.
	85	<i>Sporobolus heterolepis</i>	Prairie Dropseed	1 Gal.
	70	<i>Veronica 'Sunny Border Blue'</i>	Sunny Border Blue Veronica	1 Gal.

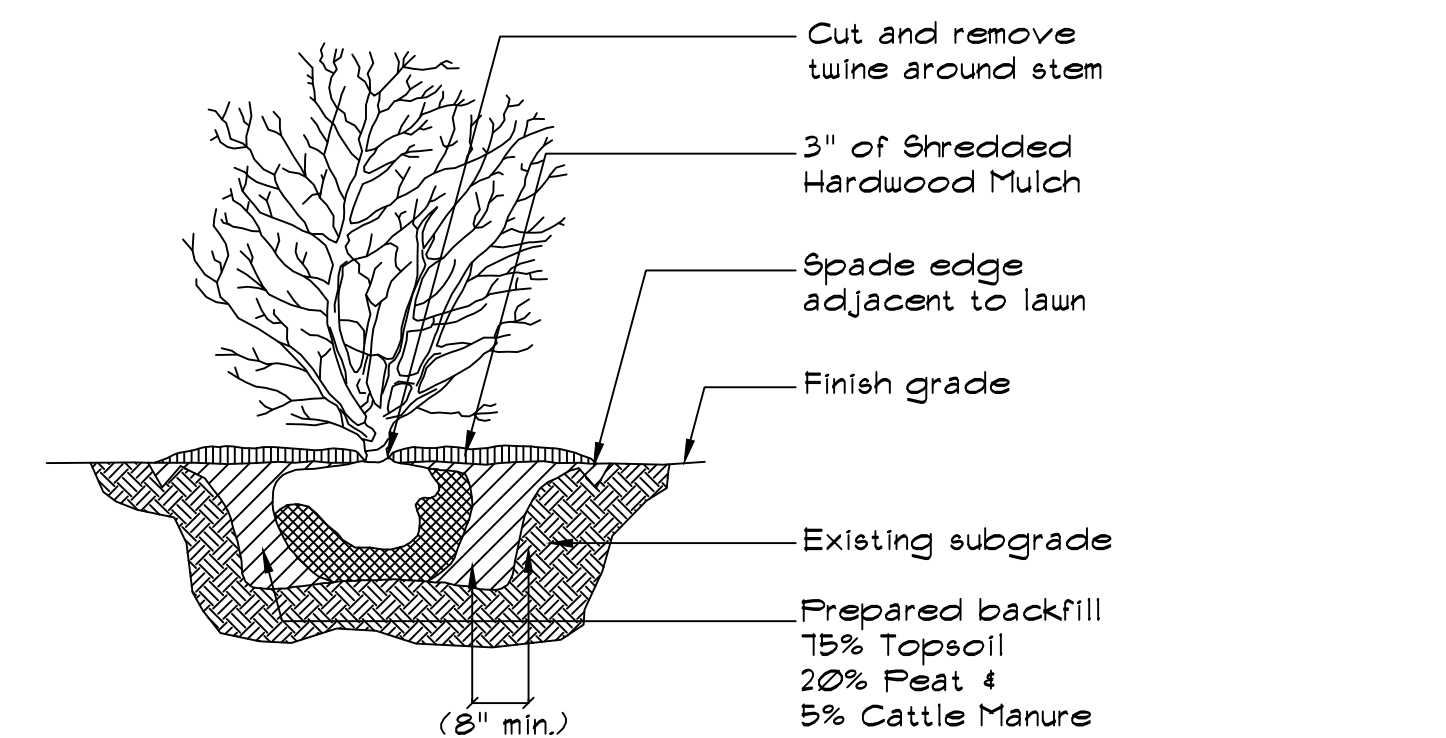
TURF				
	1601 sq.	Sod	Kentucky Bluegrass Blend	



DECIDUOUS TREE INSTALLATION DETAIL
N.T.S.



PERENNIAL, GROUNDCOVER, &
ORNAMENTAL GRASS INSTALLATION DETAIL
N.T.S.



SHRUB/ORNAMENTAL TREE INSTALLATION DETAIL
N.T.S.

REVISIONS:					
DATE	BY	DESCRIPTION	DATE	BY	DESCRIPTION

DRAWN BY: B.L.
CHECKED BY: M.M.
APPROVED BY: J.M.



ENGINEERING RESOURCE ASSOCIATES, INC.
CONSULTING ENGINEERS, SCIENTISTS & SURVEYORS
35701 WEST AVENUE, SUITE 150
WARRENVILLE, ILLINOIS 60555
PHONE (630) 393-3060
FAX (630) 393-2152

501 W. STATE STREET, SUITE 203 GENEVA, ILLINOIS 60134
PHONE 630.262.8689, FAX 630.262.8698
10 S. RIVERSIDE PLAZA, SUITE 1800 CHICAGO, ILLINOIS 60606
PHONE 312.683.0110, FAX 312.474.6999
3002 CROSSING COURT CHAMPAIGN, ILLINOIS 61822
PHONE 217.351.6268, FAX 217.355.1902



Martin Design Partnership, Ltd.

335 N. River Street
Suite 201
Batavia, Illinois 60510
PHONE (630) 482-2532

TITLE:		SCALE:
AURORA PARKS PROJECT PLUM STREET LANDSCAPE NOTES & DETAILS		N.T.S.
DATE: JAN. 2012		JOB NO: 120304
SHEET 7 OF 7		