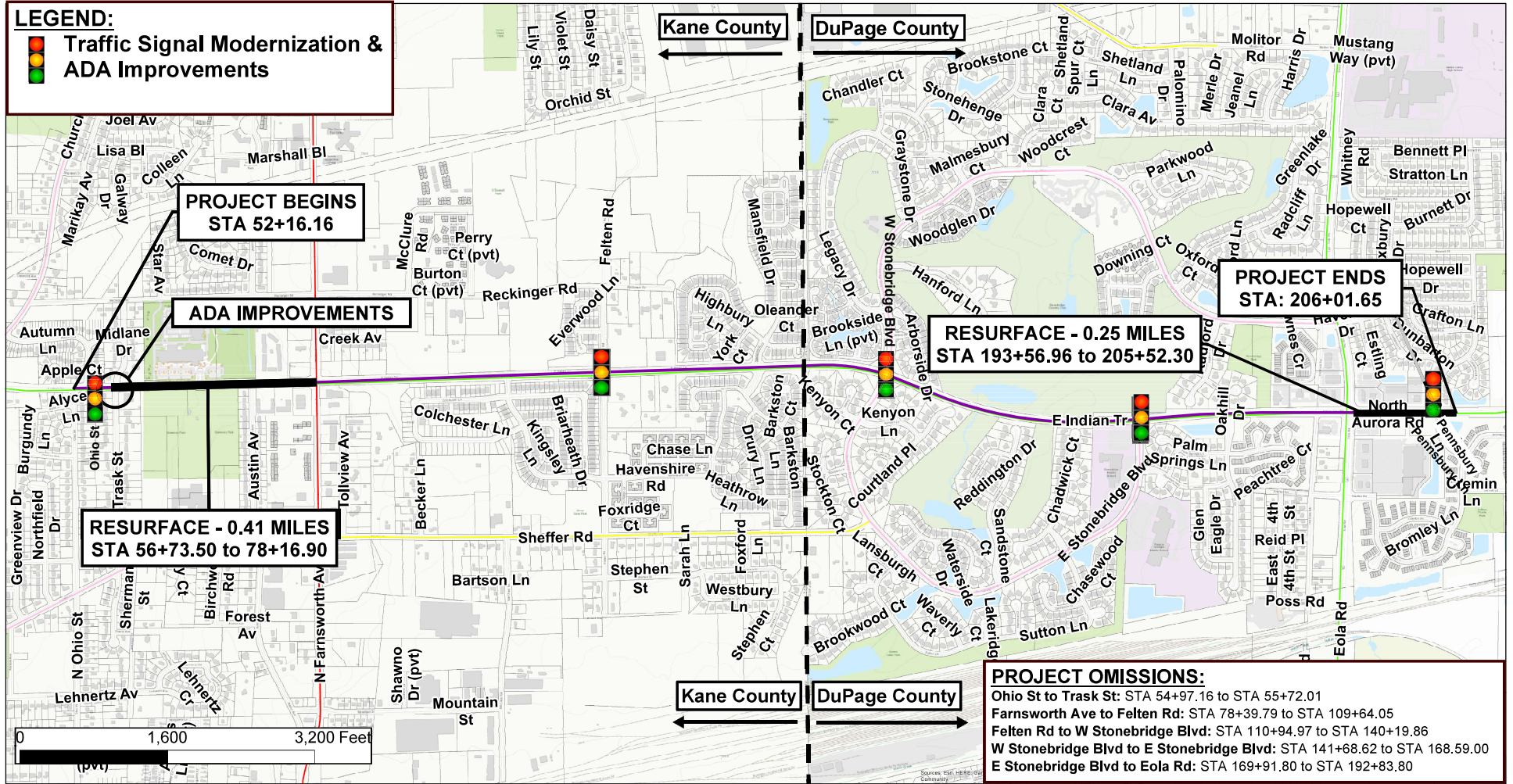










LOCATION MAP

LEGEND:

 Traffic Signal Modernization & ADA Improvements



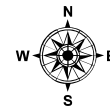
Legend

-  Project Location
-  Interstate
-  Freeway or Expressway
-  Other Principal Arterial
-  Minor Arterial
-  Major Collector
-  Minor Collector
-  Local Road or Street

City of Aurora
 44 E Downer Place
 Aurora, IL 60505

630-256-3200

INDIAN TR TRAFFIC SIGNAL MODERNIZATION & RESURFACING FROM N OHIO ST TO PENNSBURY LN
 AU 1503 (OHIO - FARNSWORTH), MUN 1157 (FARNSWORTH - COUNTY LINE), FAU 1509 (COUNTY LINE - PENNSBURY)
 SECTION TBD
 CITY OF AURORA
 KANE & DUPAGE COUNTIES, ILLINOIS
 MINOR ARTERIAL



Not To Scale



Prepared By: The City of Aurora GIS Div.