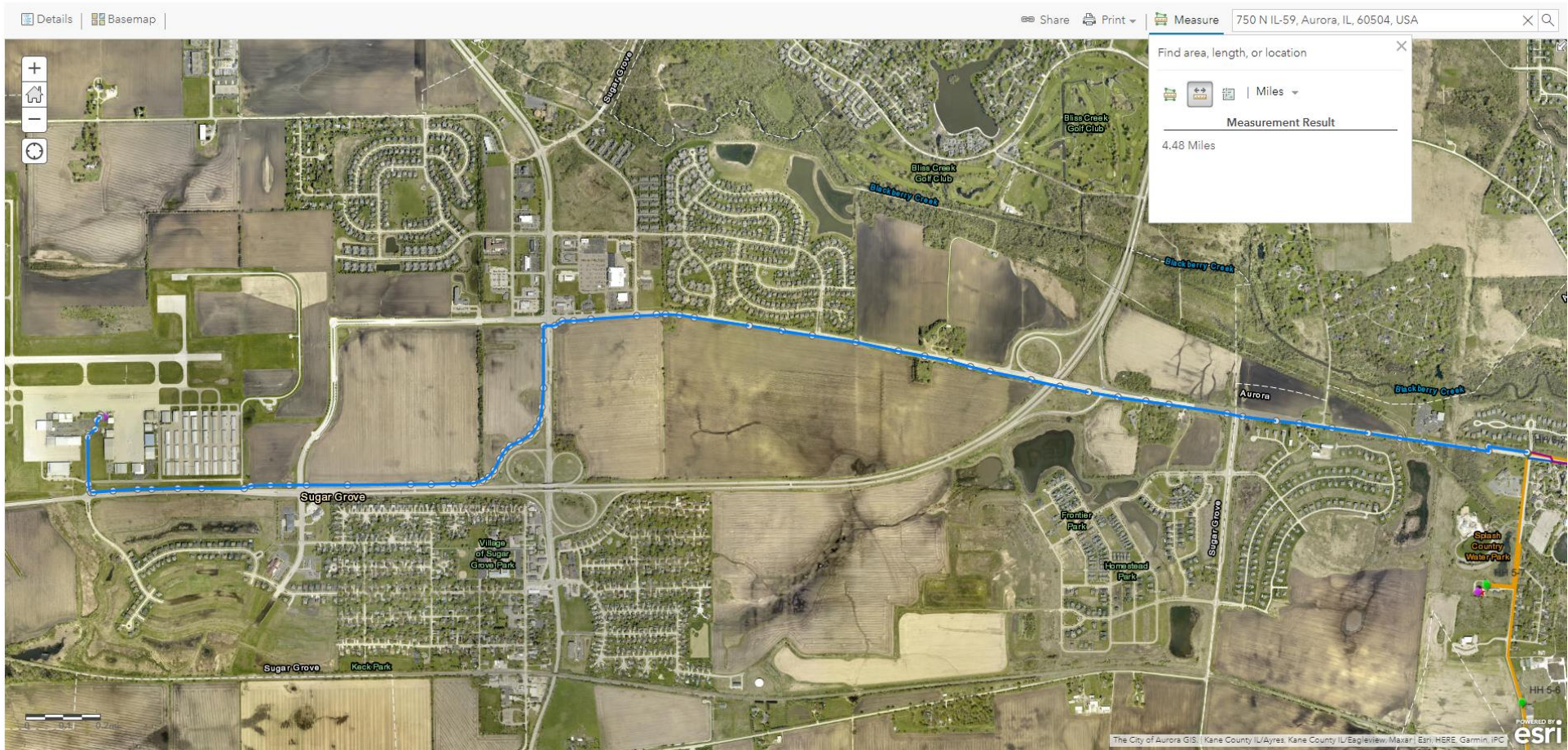


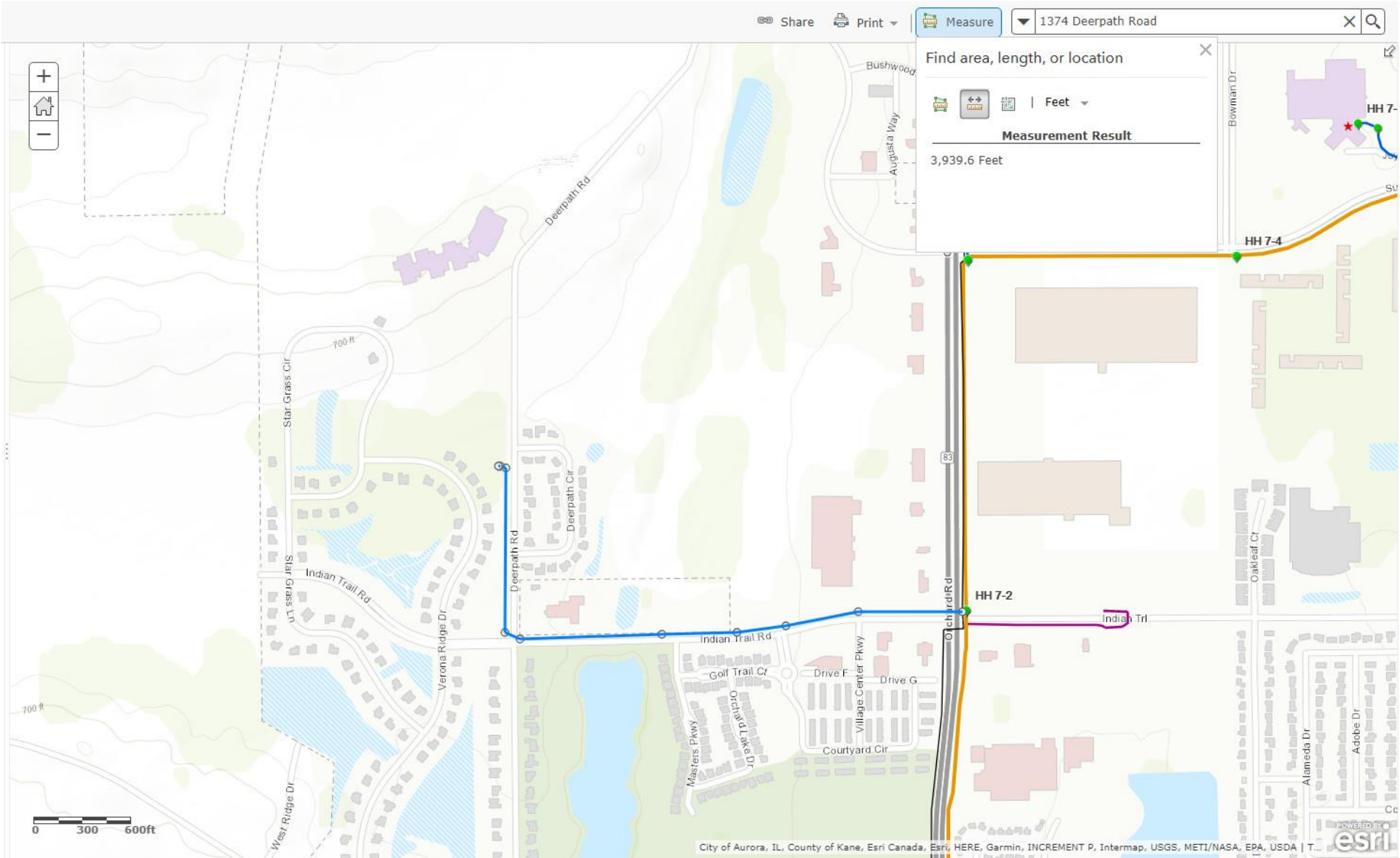
Proposed route for Aurora Airport fiber



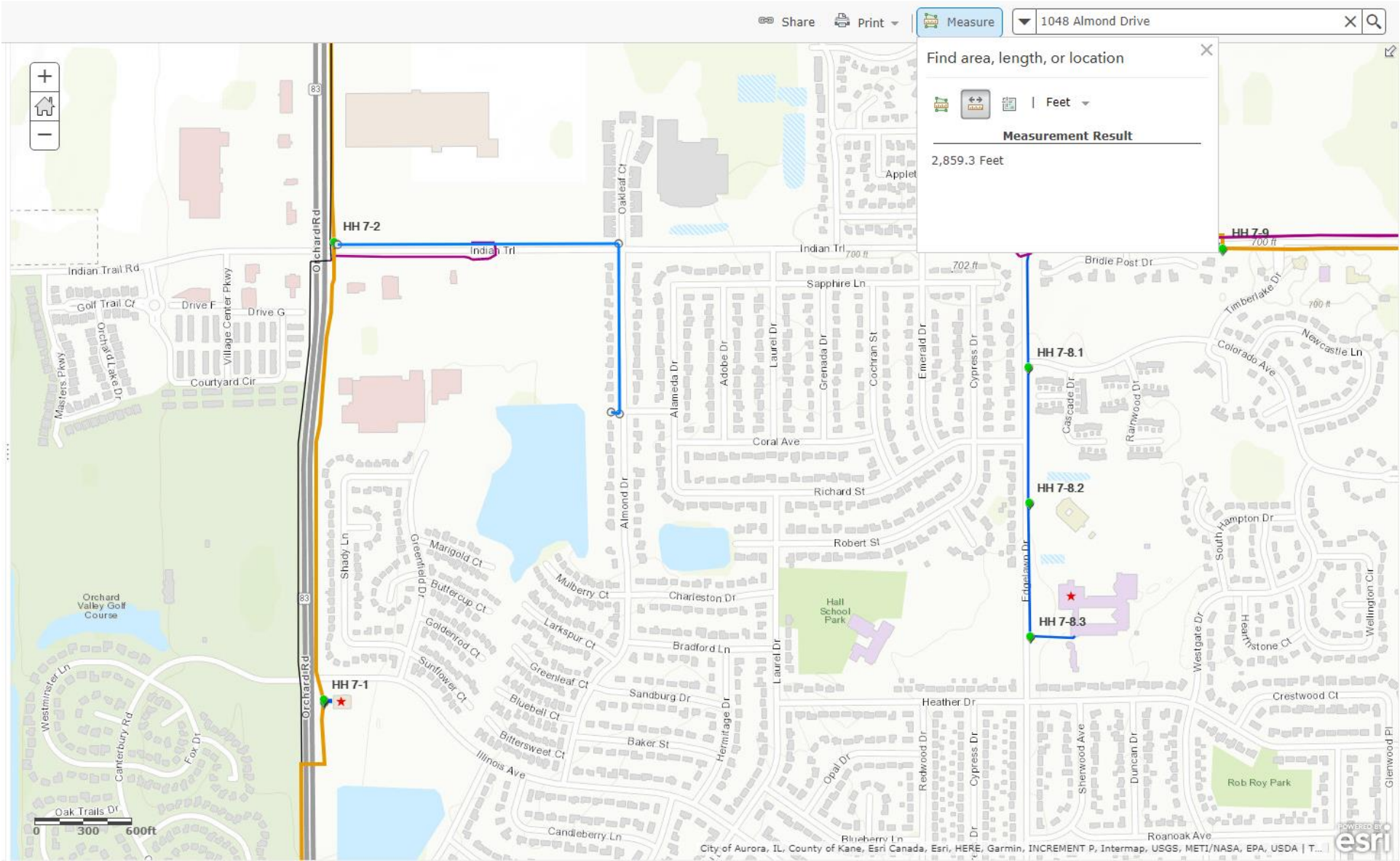


The screenshot displays a web-based mapping application for the City of Aurora, IL. The map shows a residential area with streets such as Liberty St, E New York St, and various local roads. A blue line and a purple line are drawn across the map, likely representing different routes or boundaries. A measurement tool is active, showing a result of 7,105.3 Feet. The map includes a scale bar at the bottom indicating 0, 300, and 600 feet. The application interface includes a top bar with 'Details', 'Basemap', 'Share', 'Print', and 'Measure' options. A search bar at the top right allows finding addresses or places. The bottom right corner features the Esri logo and a copyright notice for the City of Aurora, IL, and various data providers.

Fiber to Well 29 (1374 Deerpath Road)

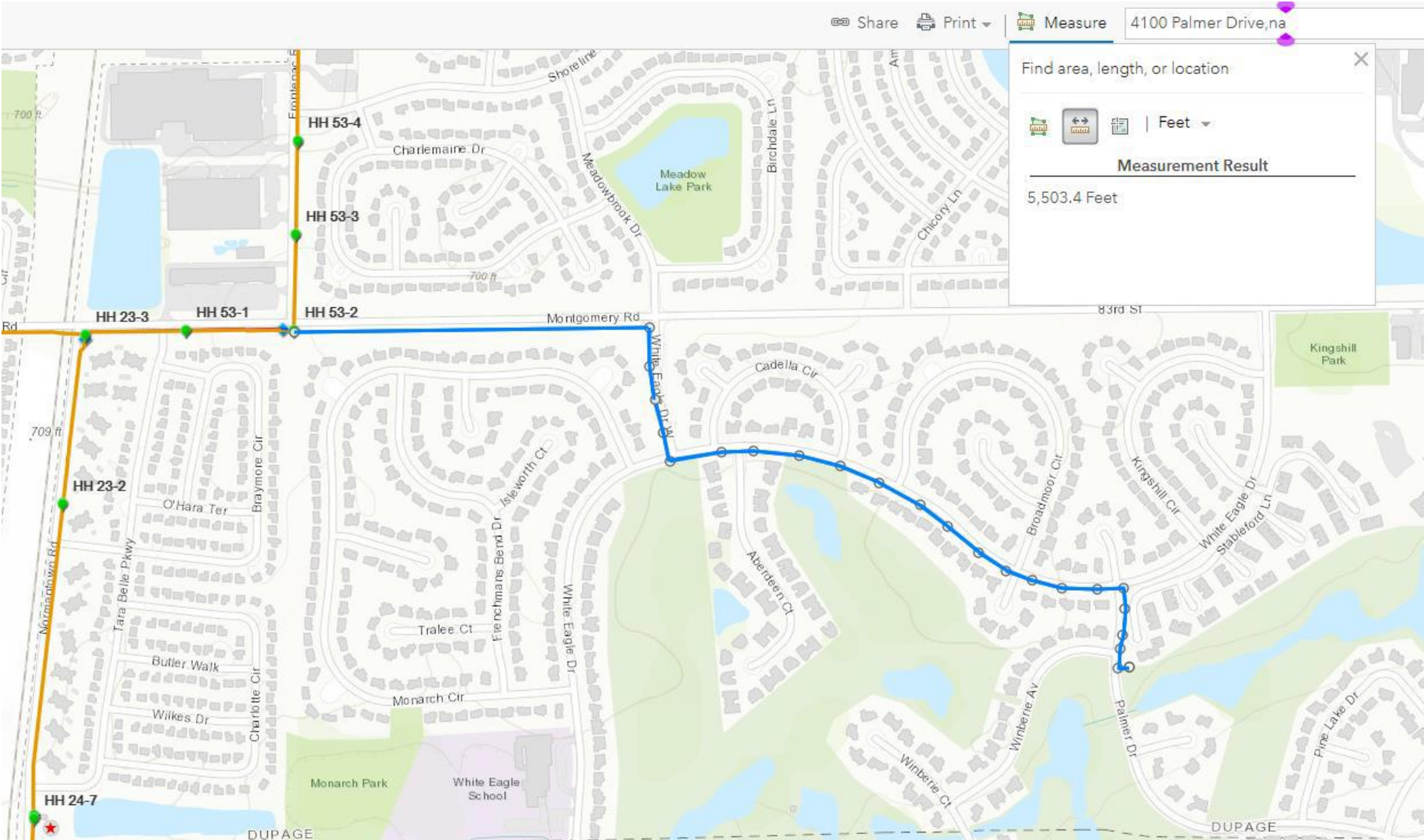


Fiber to Well 27 (1048 Almond Drive)





Fiber to Lift Station White Eagle (4100 Palmer Drive)



Fiber to Lift Station Clark Street (155 Baje Industry Drive)

