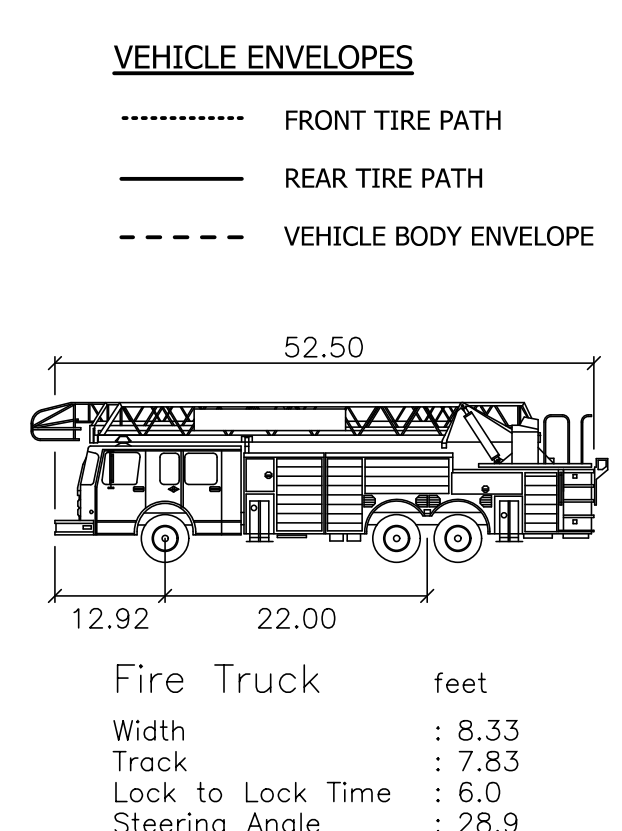
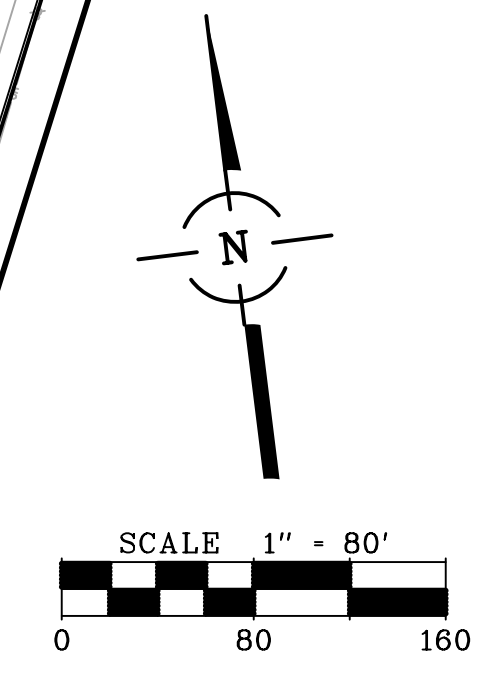
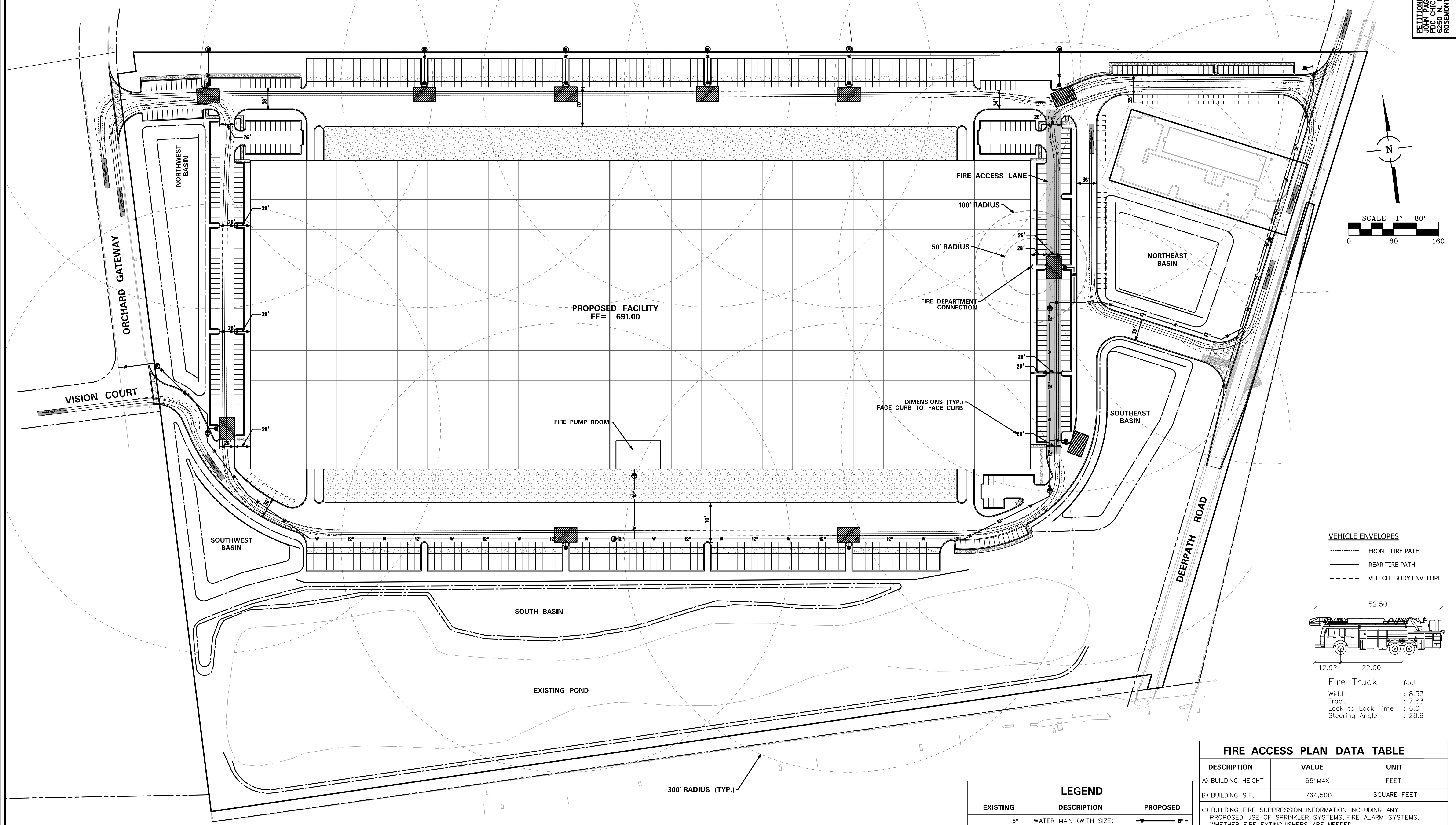


FIRE ACCESS PLAN FOR ORCHARD INDUSTRIAL SUBDIVISION, LOT 1

PETITIONER:
 JOHN FACILITARY, LLC
 650 N. RIVER ROAD, SUITE 4050
 ROSEMONT, IL 60018



| LEGEND | | |
|----------|-----------------------------------|----------|
| EXISTING | DESCRIPTION | PROPOSED |
| — 8" — | WATER MAIN (WITH SIZE) | — 8" — |
| ⊕ | FIRE HYDRANT | ⊕ |
| ⊕ | PRESSURE CONNECTION | ⊕ |
| ⊕ | PIPE REDUCER | ▶ |
| ⊕ ⊕ | VALVE AND VAULT, VALVE | ⊕ |
| ■ | INDICATES STAGING AREA 26'X40' | ■ |

| FIRE ACCESS PLAN DATA TABLE | | |
|---|---------|-------------|
| DESCRIPTION | VALUE | UNIT |
| A) BUILDING HEIGHT | 55' MAX | FEET |
| B) BUILDING S.F. | 764,500 | SQUARE FEET |
| C) BUILDING FIRE SUPPRESSION INFORMATION INCLUDING ANY PROPOSED USE OF SPRINKLER SYSTEMS, FIRE ALARM SYSTEMS, WHETHER FIRE EXTINGUISHERS ARE NEEDED: - CODE COMPLIANT, BUILDING STANDARD SPRINKLER SYSTEM. - FIRE EXTINGUISHER AND ALARM PER CODE. | | |
| D) GENERAL DESCRIPTION OF BUSINESS TO BE CONDUCTED WITHIN EACH BUILDING INCLUDING: WILL THERE BE RACK STORAGE IN THE BUILDING, WILL THERE BE STORAGE OF COMBUSTIBLE MATERIALS OVER TWELVE FEET IN HEIGHT, CLEARANCE OF SPRINKLER HEADS AND STORED MATERIALS (18 IN. MIN.): - 29,756 SF OF HOTEL AND BANQUET FACILITY | | |

| | | | | | | | | | | | | | |
|---|--|---|---------------------|---|--|------------------------------------|--|-------------------|--|------------------|--|-------------------------------|--|
| FIRE ACCESS PLAN ORCHARD ROAD INDUSTRIAL AURORA, ILLINOIS | <table border="1" style="width: 100%; border-collapse: collapse;"> <tr> <td style="width: 50%; text-align: center;"> CONSULTING ENGINEERS SITE DEVELOPMENT ENGINEERS LAND SURVEYORS </td> <td style="width: 50%; text-align: center;"> SPACECO INC. </td> </tr> <tr> <td colspan="2" style="text-align: center;"> 9575 W. Higgins Road, Suite 700, Rosemont, Illinois 60018 Phone: (847) 676-4060 Fax: (847) 676-4065 </td> </tr> <tr> <td colspan="2" style="text-align: center;"> FILENAME: 10087P-FIRE-ACCESS... </td> </tr> <tr> <td colspan="2" style="text-align: center;"> DATE: 06/08/18 </td> </tr> <tr> <td colspan="2" style="text-align: center;"> JOB NO. 10087 </td> </tr> <tr> <td colspan="2" style="text-align: center;"> SHEET FAP 1 OF 1 </td> </tr> </table> | CONSULTING ENGINEERS SITE DEVELOPMENT ENGINEERS LAND SURVEYORS | SPACECO INC. | 9575 W. Higgins Road, Suite 700, Rosemont, Illinois 60018 Phone: (847) 676-4060 Fax: (847) 676-4065 | | FILENAME: 10087P-FIRE-ACCESS... | | DATE: 06/08/18 | | JOB NO. 10087 | | SHEET FAP 1 OF 1 | |
| CONSULTING ENGINEERS SITE DEVELOPMENT ENGINEERS LAND SURVEYORS | SPACECO INC. | | | | | | | | | | | | |
| 9575 W. Higgins Road, Suite 700, Rosemont, Illinois 60018 Phone: (847) 676-4060 Fax: (847) 676-4065 | | | | | | | | | | | | | |
| FILENAME: 10087P-FIRE-ACCESS... | | | | | | | | | | | | | |
| DATE: 06/08/18 | | | | | | | | | | | | | |
| JOB NO. 10087 | | | | | | | | | | | | | |
| SHEET FAP 1 OF 1 | | | | | | | | | | | | | |