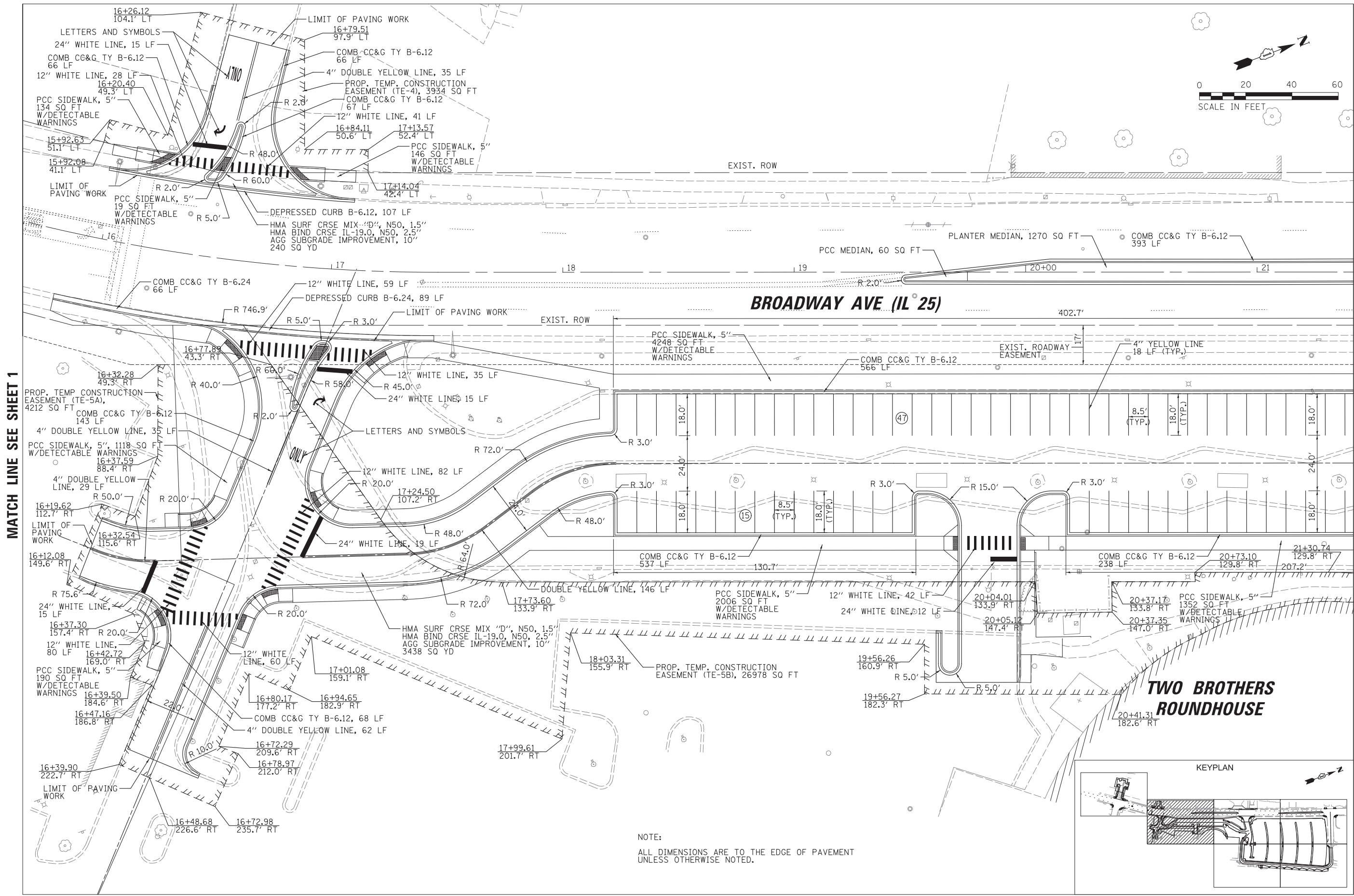
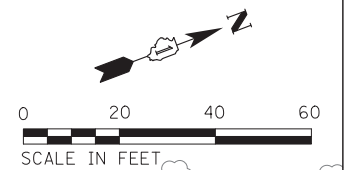


NOTE:
SEE SHEET 7 FOR ROADWAY PROFILES.
ALL DIMENSIONS ARE TO THE EDGE OF PAVEMENT
UNLESS OTHERWISE NOTED.

MATCH LINE SEE SHEET 2

EXHIBIT 2

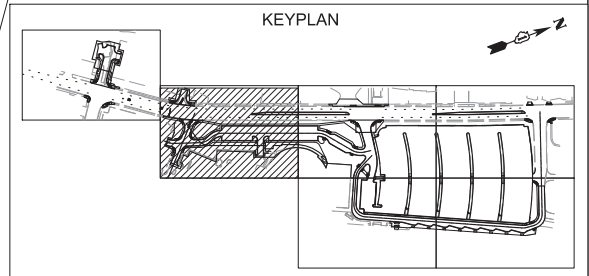
FILE NAME = N:\WBK\150077\Civil\GM_150077_01.sht	USER NAME = prozelan	DESIGNED - BMW	REVISED -	STATE OF ILLINOIS DEPARTMENT OF TRANSPORTATION	AURORA TRANSIT CENTER IMPROVEMENTS			F.A. RTE.	SECTION	COUNTY	TOTAL SHEETS	SHEET NO.
Default	PLOT SCALE = 28'	DRAWN - PWN, ELA	REVISED -		GEOMETRIC PLAN					KANE	15	1
	PLOT DATE = 10/13/2015	CHECKED - BMW	REVISED -		SCALE: 28'	SHEET	OF 15 SHEETS	STA.	TO STA.	CONTRACT NO.		
		DATE - 10/13/2015	REVISED -		ILLINOIS FED. AID PROJECT							



MATCH LINE SEE SHEET 1

MATCH LINE SEE SHEET 3

**TWO BROTHERS
ROUNDHOUSE**

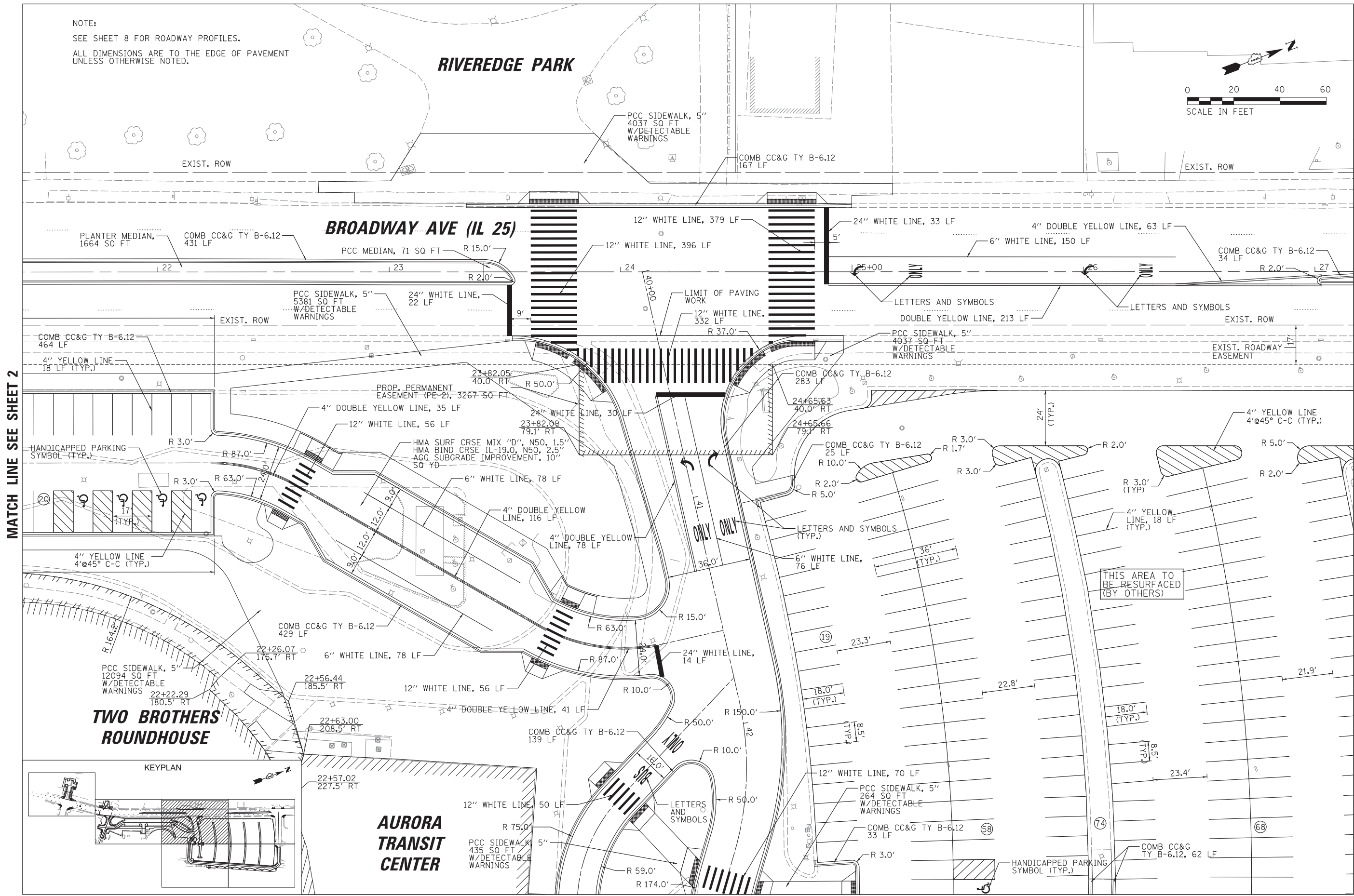
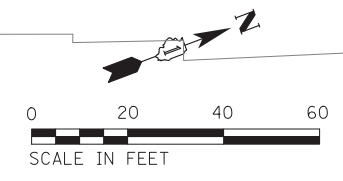


NOTE:
ALL DIMENSIONS ARE TO THE EDGE OF PAVEMENT
UNLESS OTHERWISE NOTED.

EXHIBIT 2

FILE NAME = N:\WBK\150077\Civil\GM\150077_02.sht	USER NAME = prozelan	DESIGNED - BMW	REVISED -	STATE OF ILLINOIS DEPARTMENT OF TRANSPORTATION	AURORA TRANSIT CENTER IMPROVEMENTS GEOMETRIC PLAN			F.A. RTE.	SECTION	COUNTY	TOTAL SHEETS	SHEET NO.
	PLOT SCALE = 28'	CHECKED - BMW	REVISED -							KANE	15	2
Default	PLOT DATE = 10/13/2015	DATE - 10/13/2015	REVISED -		SCALE: 28'	SHEET	OF 15 SHEETS	STA.	TO STA.	ILLINOIS FED. AID PROJECT		

NOTE:
SEE SHEET 8 FOR ROADWAY PROFILES.
ALL DIMENSIONS ARE TO THE EDGE OF PAVEMENT
UNLESS OTHERWISE NOTED.



MATCH LINE SEE SHEET 2

MATCH LINE SEE SHEET 4

MATCH LINE SEE SHEET 4

EXHIBIT 2

FILE NAME =
N:\WBK\150077\Civil\GM\150077_03.sht

USER NAME = prozelan
PLOT SCALE = 28'
PLOT DATE = 10/13/2015

DESIGNED - BMW
DRAWN - PWN, ELA
CHECKED - BMW
DATE - 10/13/2015

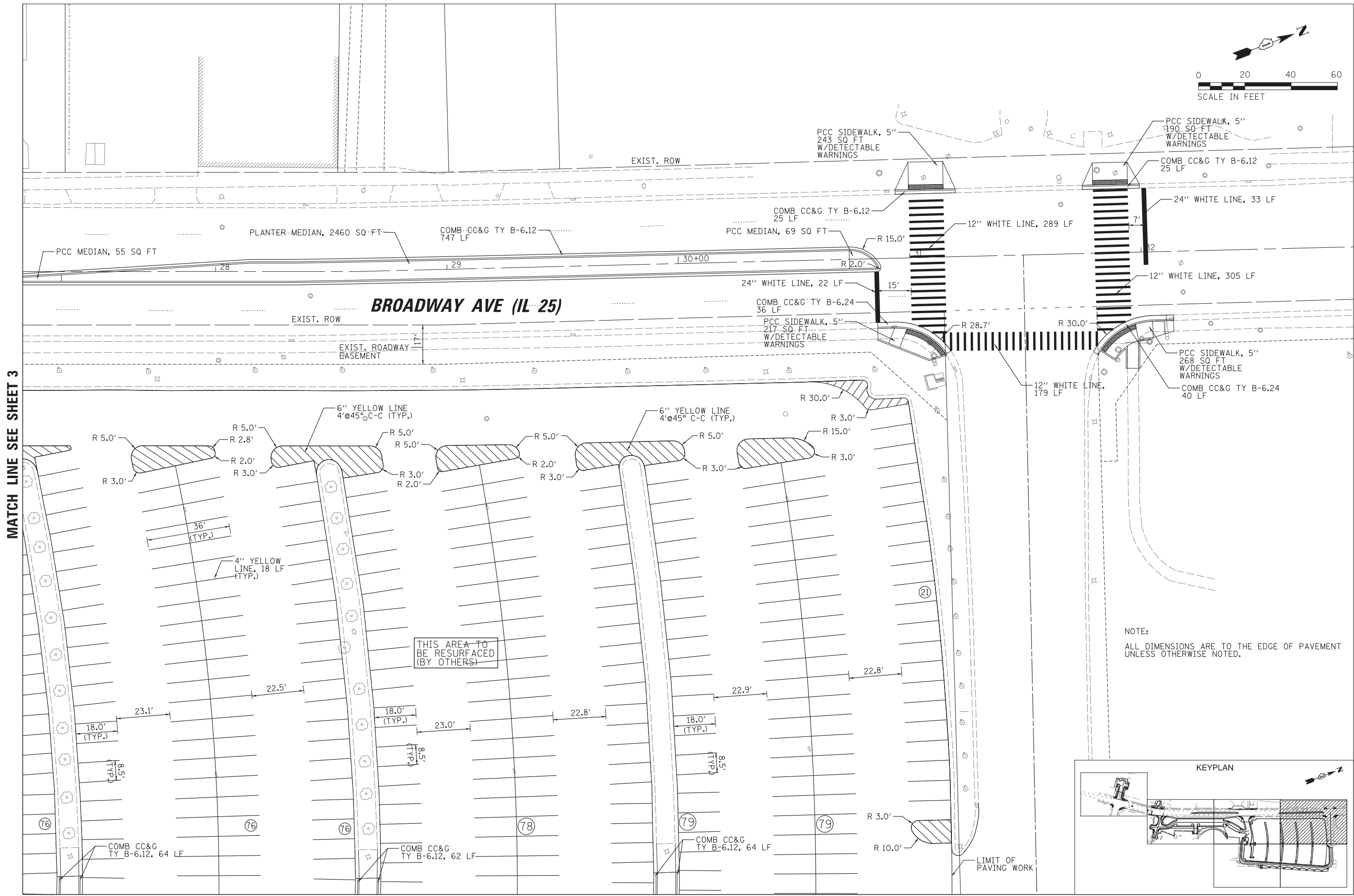
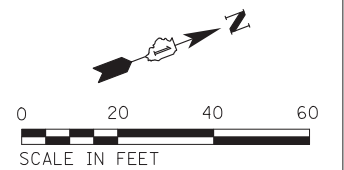
REVISED -
REVISED -
REVISED -
REVISED -

STATE OF ILLINOIS
DEPARTMENT OF TRANSPORTATION

AURORA TRANSIT CENTER IMPROVEMENTS
GEOMETRIC PLAN

SCALE: 28' SHEET OF 15 SHEETS STA. TO STA.

F.A. RTE.	SECTION	COUNTY	TOTAL SHEETS	SHEET NO.
		KANE	15	3
CONTRACT NO.				
ILLINOIS FED. AID PROJECT				

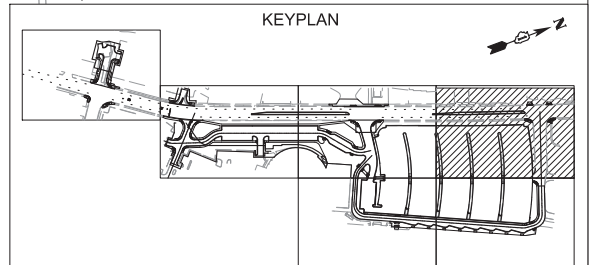


MATCH LINE SEE SHEET 3

MATCH LINE SEE SHEET 6

EXHIBIT 2

NOTE:
ALL DIMENSIONS ARE TO THE EDGE OF PAVEMENT
UNLESS OTHERWISE NOTED.



FILE NAME = N:\WBK\150077\Civil\GM_150077_04.sht	USER NAME = prozelan	DESIGNED - BMW	REVISED -
Default	PLOT SCALE = 28'	DRAWN - PWN, ELA	REVISED -
	PLOT DATE = 10/13/2015	CHECKED - BMW	REVISED -
		DATE - 10/13/2015	REVISED -

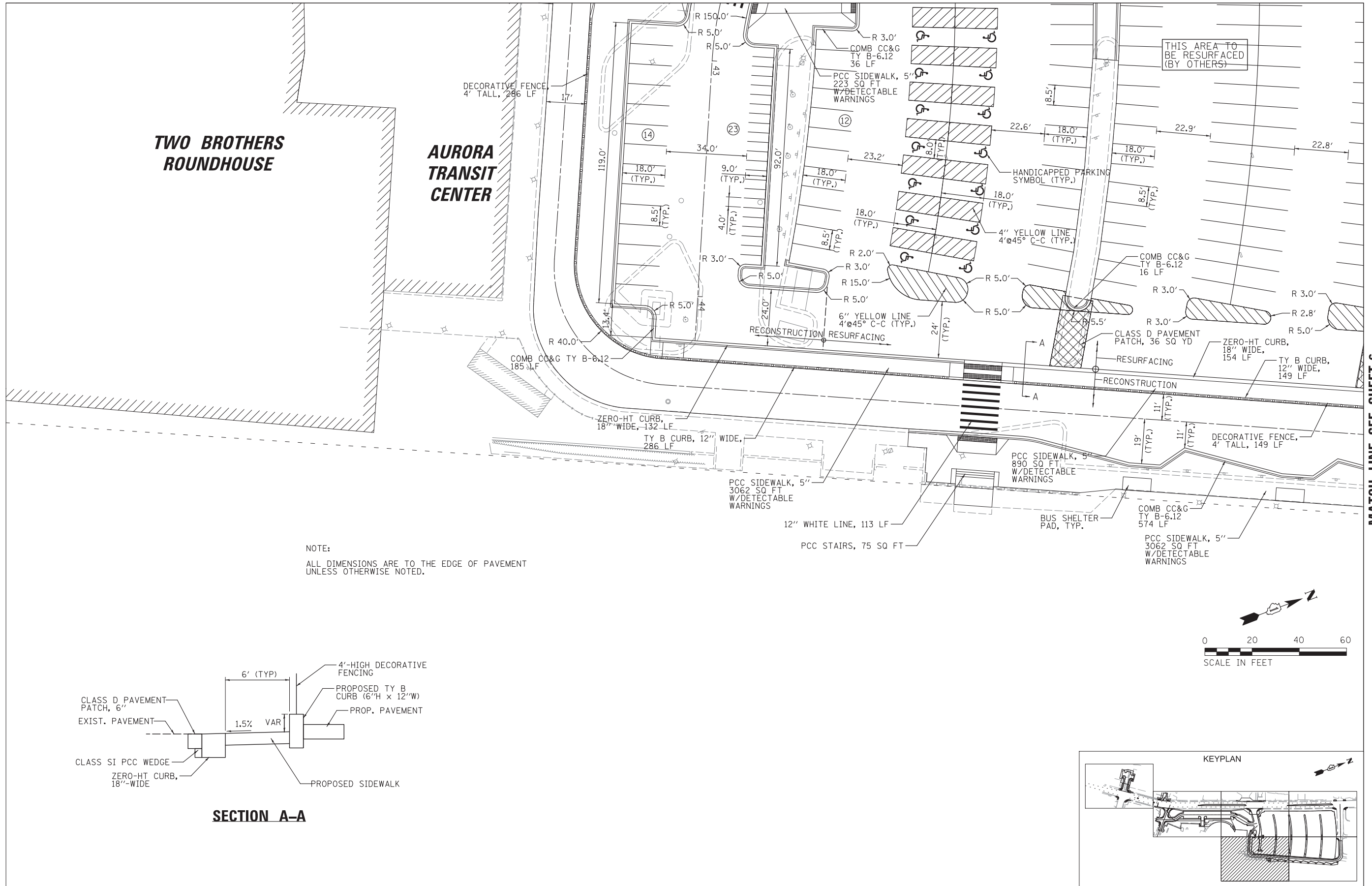
**STATE OF ILLINOIS
DEPARTMENT OF TRANSPORTATION**

**AURORA TRANSIT CENTER IMPROVEMENTS
GEOMETRIC PLAN**

SCALE: 28' SHEET OF 15 SHEETS STA. TO STA.

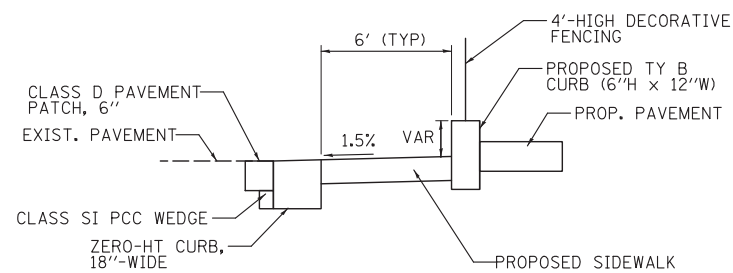
F.A. RTE.	SECTION	COUNTY	TOTAL SHEETS	SHEET NO.
		KANE	15	4
ILLINOIS FED. AID PROJECT			CONTRACT NO.	

MATCH LINE SEE SHEET 2



MATCH LINE SEE SHEET 6

NOTE:
ALL DIMENSIONS ARE TO THE EDGE OF PAVEMENT
UNLESS OTHERWISE NOTED.



SECTION A-A

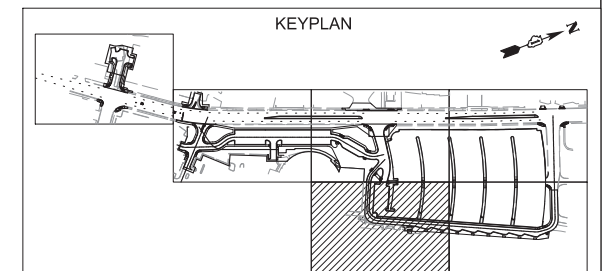
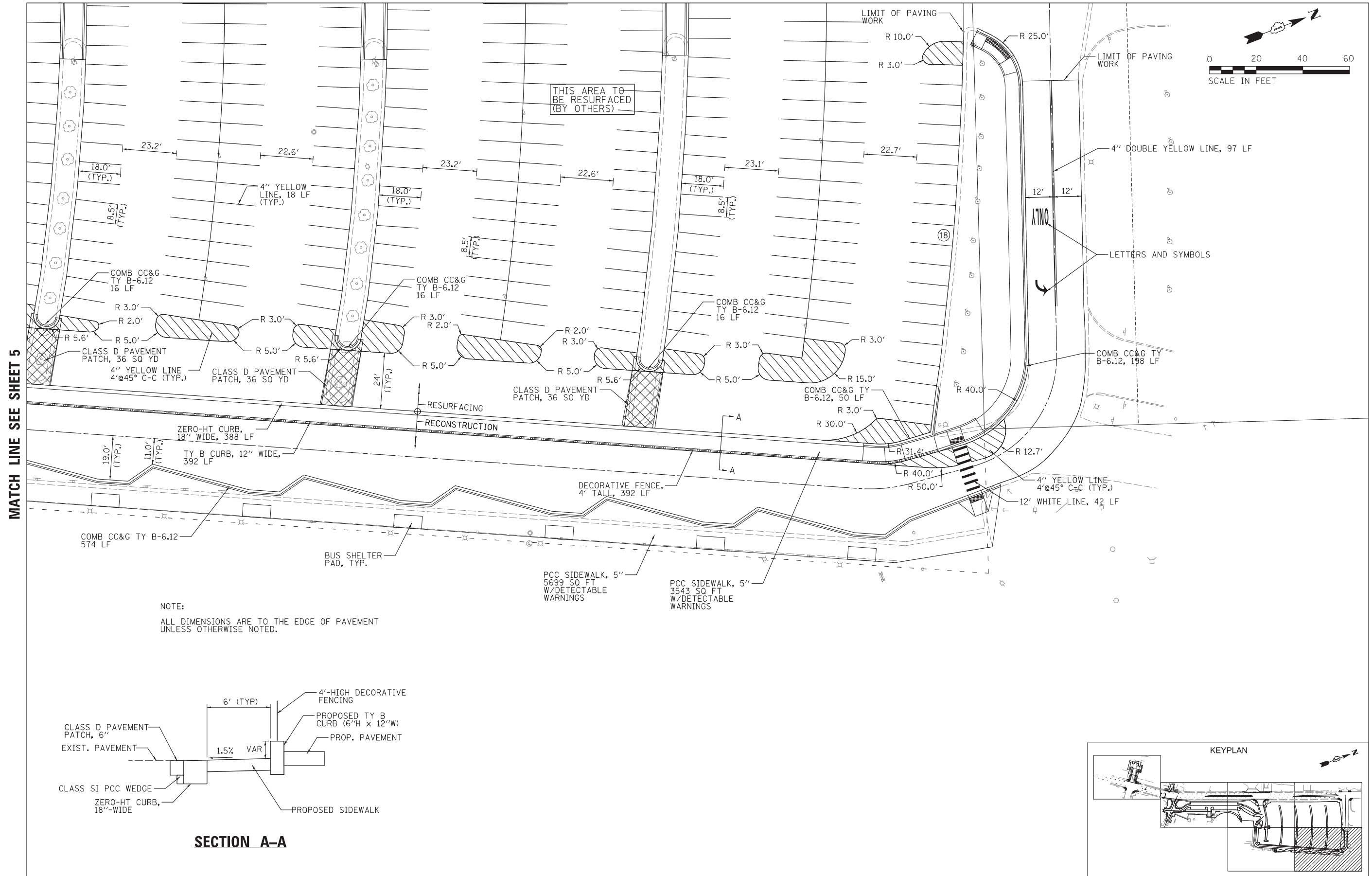


EXHIBIT 2

FILE NAME = N:\WBK\150077\Civil\GM\150077_05.sht	USER NAME = prozelan	DESIGNED - BMW	REVISED -	STATE OF ILLINOIS DEPARTMENT OF TRANSPORTATION	AURORA TRANSIT CENTER IMPROVEMENTS GEOMETRIC PLAN			F.A. RTE.	SECTION	COUNTY	TOTAL SHEETS	SHEET NO.
Default	PLOT SCALE = 20'	DRAWN - PWN, ELA	REVISED -		SCALE: 20'	SHEET	OF 15 SHEETS	STA.	TO STA.	KANE	15	5
	PLOT DATE = 10/13/2015	CHECKED - BMW	REVISED -							CONTRACT NO.		
		DATE - 10/13/2015	REVISED -							ILLINOIS FED. AID PROJECT		

MATCH LINE SEE SHEET 4



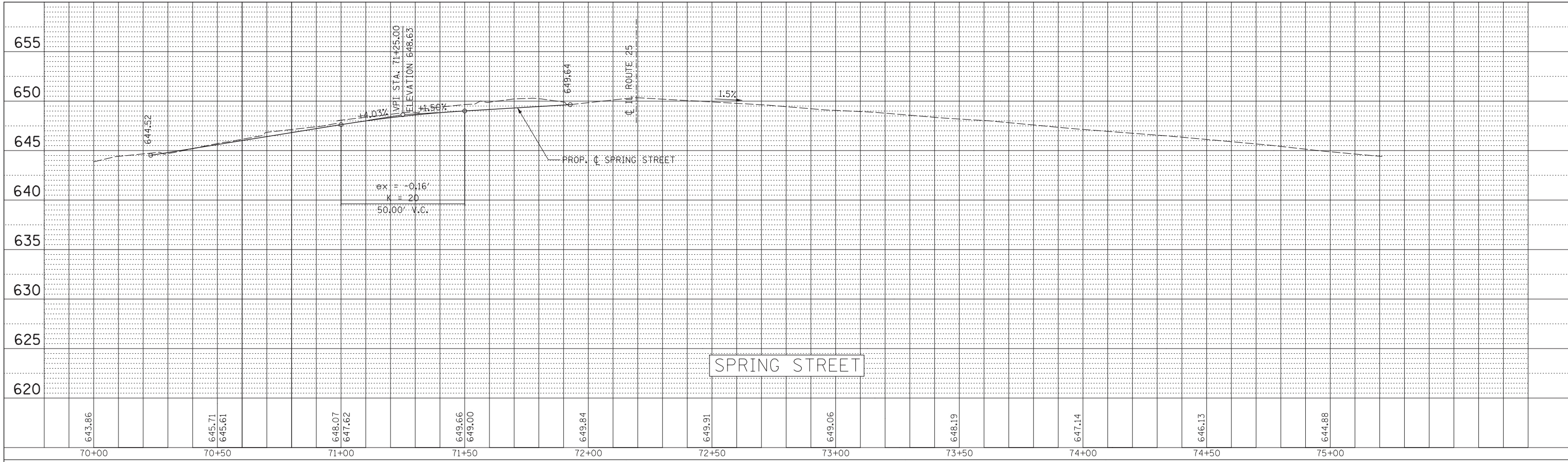
MATCH LINE SEE SHEET 5



EXHIBIT 2

FILE NAME = N:\WBK\150077\Civil\GM\150077_06.sht	USER NAME = prozelan	DESIGNED - BMW	REVISED -	STATE OF ILLINOIS DEPARTMENT OF TRANSPORTATION	AURORA TRANSIT CENTER IMPROVEMENTS GEOMETRIC PLAN			F.A. RTE.	SECTION	COUNTY	TOTAL SHEETS	SHEET NO.
Default	PLOT SCALE = 28'	DRAWN - PWN, ELA	REVISED -		SCALE: 28'	SHEET	OF 15 SHEETS	STA.	TO STA.	KANE	15	6
	PLOT DATE = 10/13/2015	CHECKED - BMW	REVISED -									
		DATE - 10/13/2015	REVISED -									
										CONTRACT NO.		
										ILLINOIS FED. AID PROJECT		

PLAN	SURVEYED	BY	DATE
	PLOTTED		
	CHECKED		
	AT		
	NO.		
	FILE NAME		



PROFILE	SURVEYED	BY	DATE
	PLOTTED		
	CHECKED		
	AT		
	NO.		
	FILE NAME		

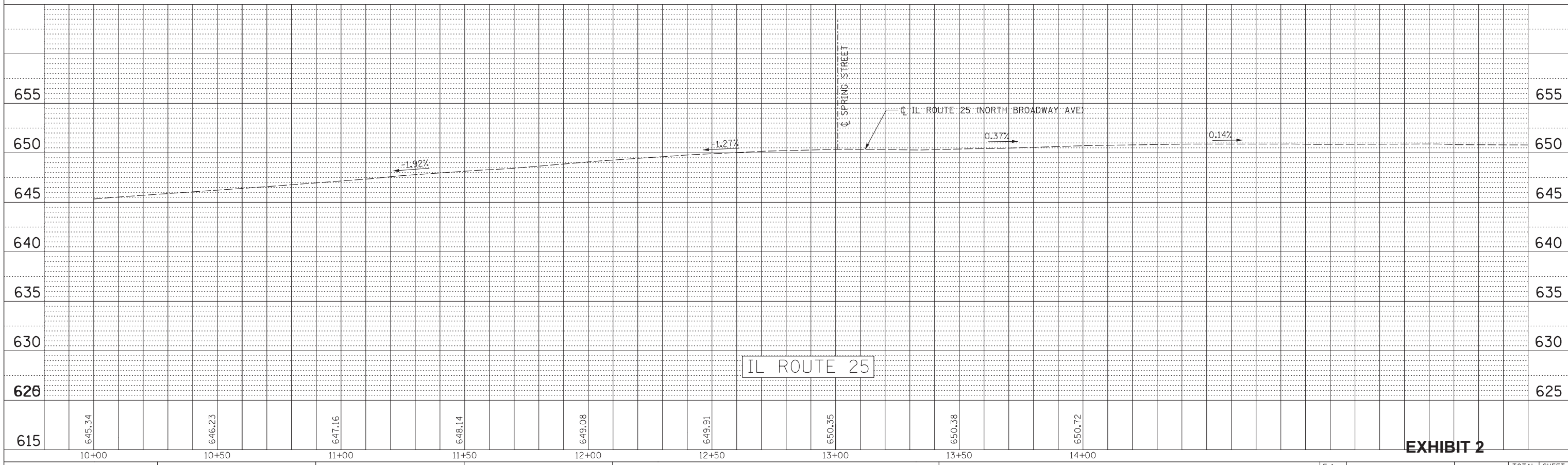
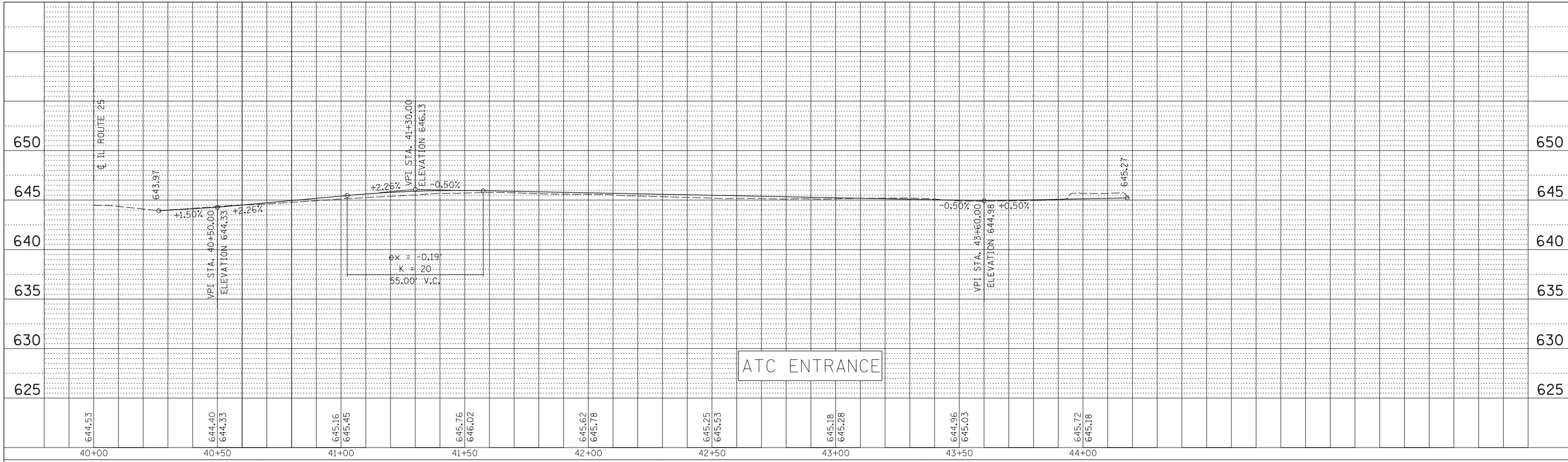


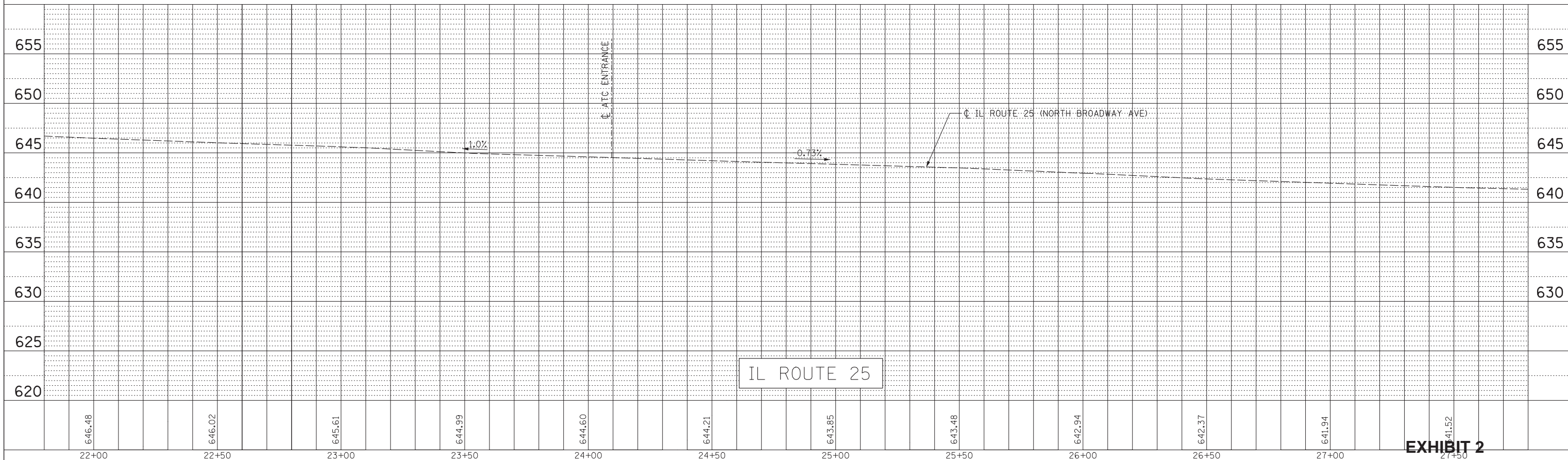
EXHIBIT 2

FILE NAME =	USER NAME = prozelan	DESIGNED -	REVISED -	STATE OF ILLINOIS DEPARTMENT OF TRANSPORTATION	AURORA TRANSIT CENTER IMPROVEMENTS	F.A. RTE.	SECTION	COUNTY	TOTAL SHEETS	SHEET NO.	
N:\WBK\150077\Civil\PRF-150077_SPRING_02.dgn		DRAWN -	REVISED -					KANE	15	7	
PLOT SCALE = 28'		CHECKED -	REVISED -			CONTRACT NO.					
Default	PLOT DATE = 10/13/2015	DATE -	REVISED -			SCALE:	SHEET OF SHEETS	STA. TO STA.	ILLINOIS FED. AID PROJECT		

PLAN	SURVEYED	BY	DATE
	PLOTTED		
	CHECKED		
	ATTEMPT		
	CARD FILE NAME		
NOTE BOOK NO.			



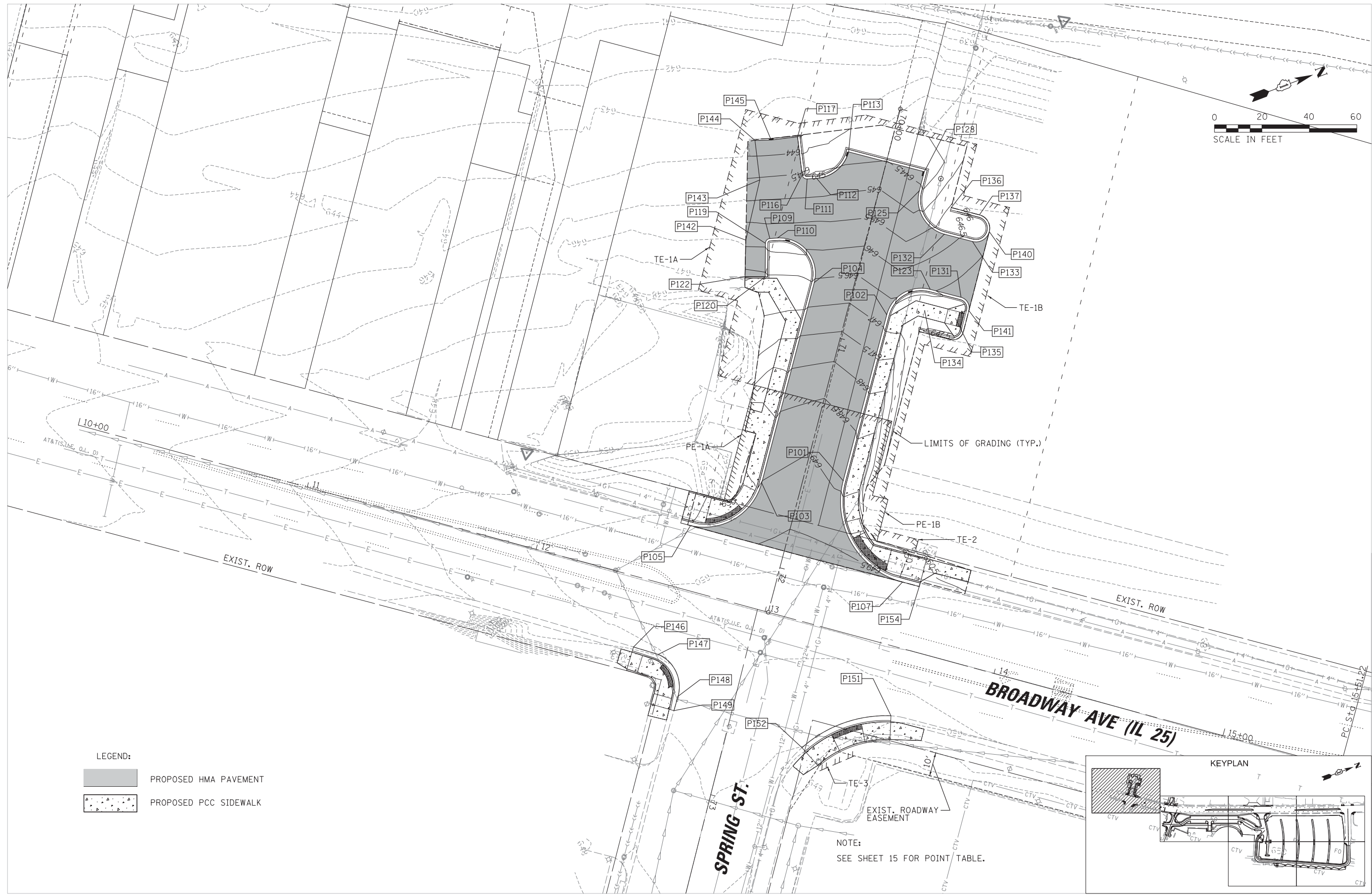
PROFILE	SURVEYED	BY	DATE
	PLOTTED		
	CHECKED		
	ATTEMPT		
	NOTATIS CHFD		
NOTE BOOK NO.			



FILE NAME =	USER NAME = prozejan	DESIGNED -	REVISED -	STATE OF ILLINOIS DEPARTMENT OF TRANSPORTATION	AURORA TRANSIT CENTER IMPROVEMENTS	F.A. RTE.	SECTION	COUNTY	TOTAL SHEETS	SHEET NO.	
N:\WBK\150077\Civil\PRF-150077_ATC_02.dgn		DRAWN -	REVISED -					KANE	15	8	
PLOT SCALE = 28'		CHECKED -	REVISED -			CONTRACT NO.					
Default	PLOT DATE = 10/13/2015	DATE -	REVISED -			SCALE:	SHEET	OF	SHEETS	STA.	TO

EXHIBIT 2

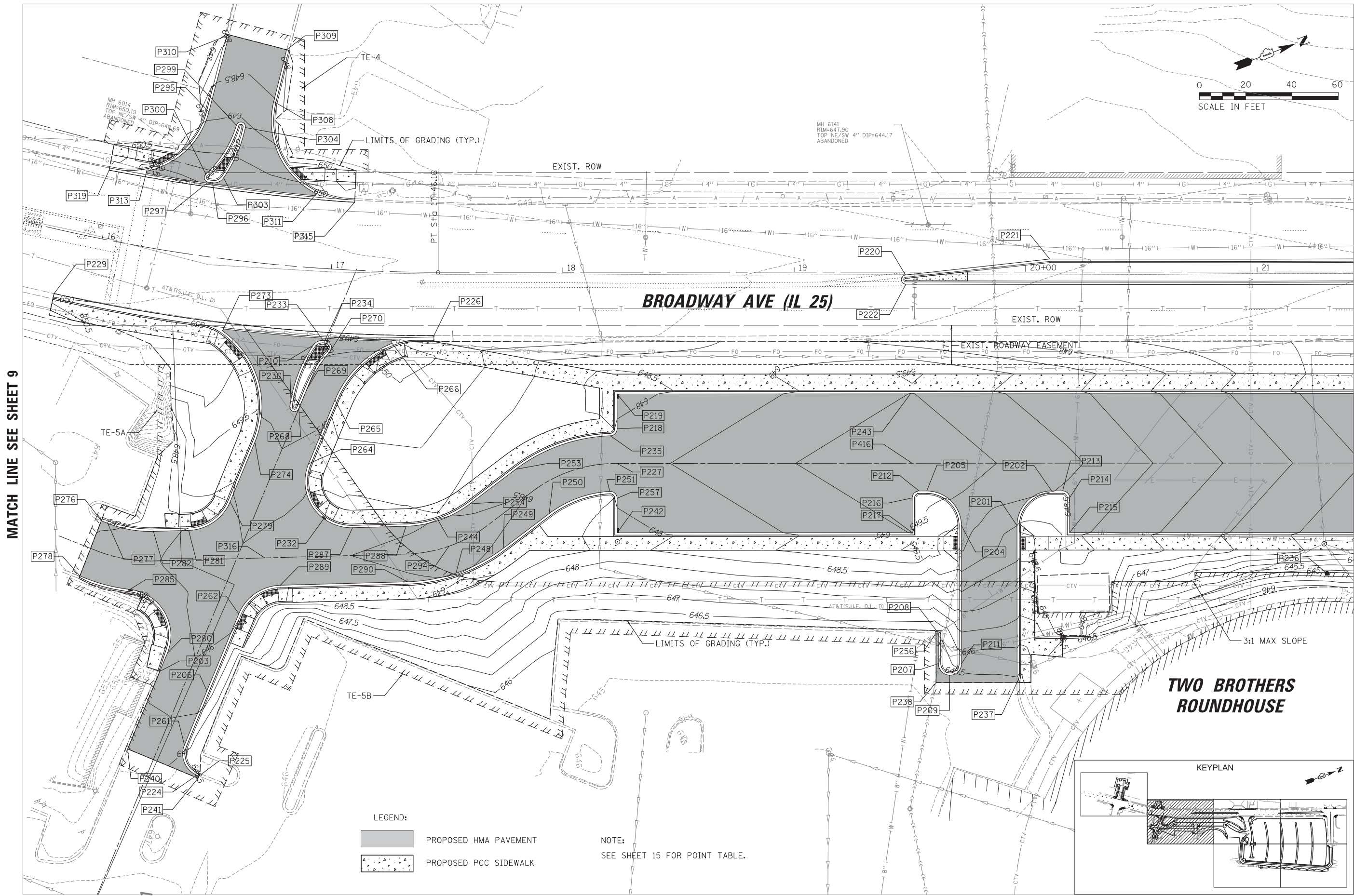
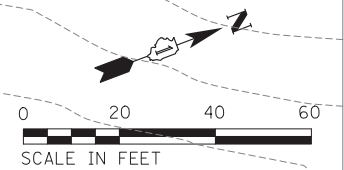
641.52



MATCH LINE SEE SHEET 10

EXHIBIT 2

FILE NAME = N:\WBK\150077\Civil\GRD.150077_01.sht	USER NAME = prozelan	DESIGNED - BMW	REVISED -	STATE OF ILLINOIS DEPARTMENT OF TRANSPORTATION	AURORA TRANSIT CENTER IMPROVEMENTS GRADING PLAN			F.A. RTE.	SECTION	COUNTY	TOTAL SHEETS	SHEET NO.
Default	PLOT SCALE = 28'	CHECKED - BMW	REVISED -		SCALE: 28'	SHEET	OF 15 SHEETS	STA.	TO STA.	KANE	15	9
	PLOT DATE = 10/13/2015	DATE - 10/13/2015	REVISED -							CONTRACT NO.		
										ILLINOIS FED. AID PROJECT		

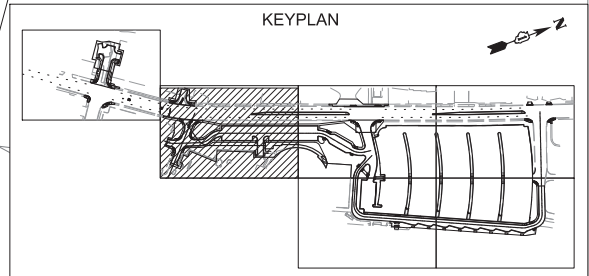


MATCH LINE SEE SHEET 9

MATCH LINE SEE SHEET 11

- LEGEND:**
- PROPOSED HMA PAVEMENT
 - PROPOSED PCC SIDEWALK

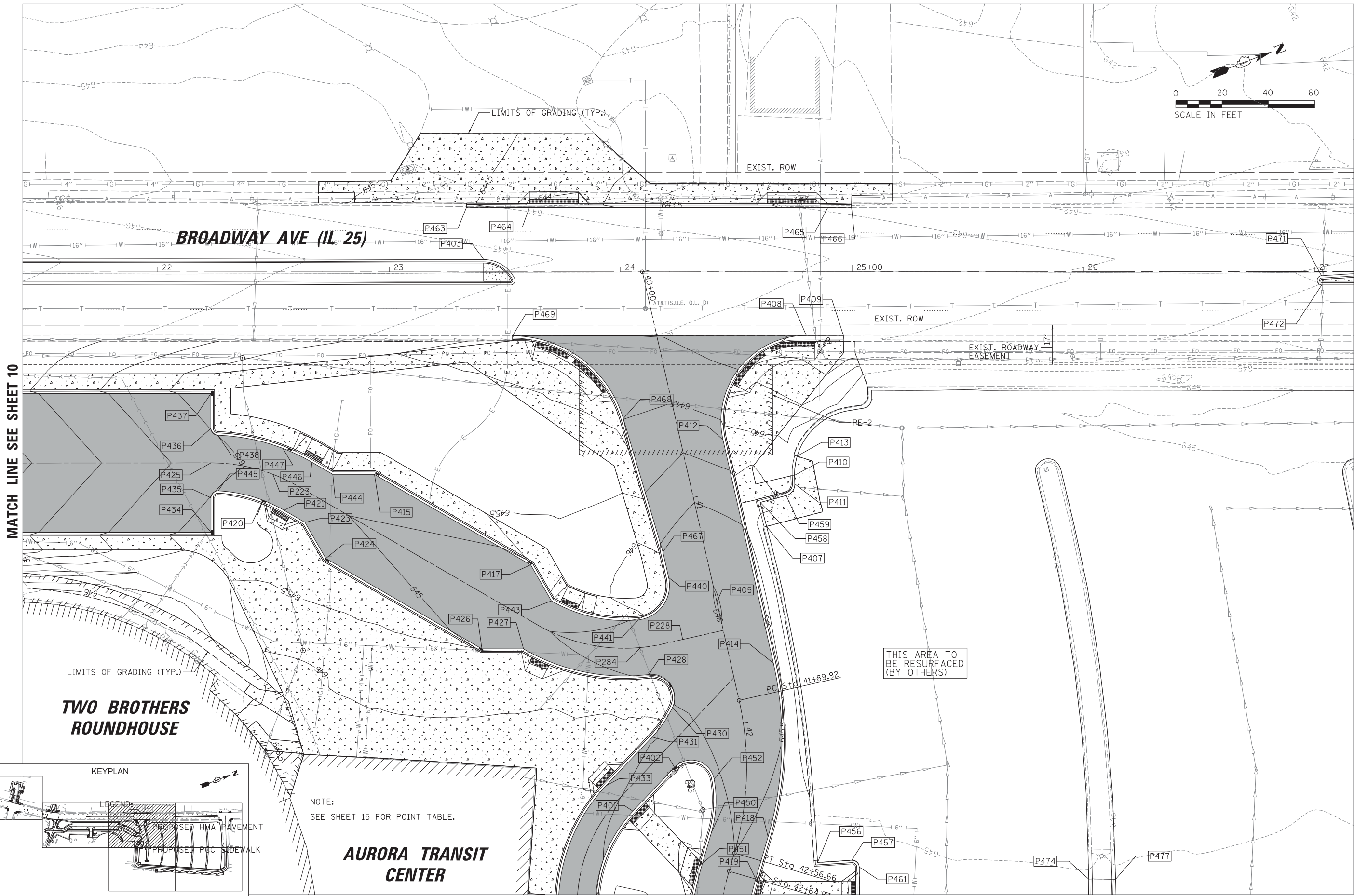
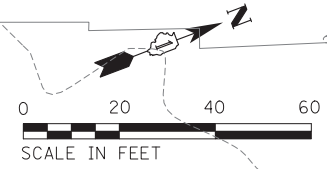
NOTE:
SEE SHEET 15 FOR POINT TABLE.



**TWO BROTHERS
ROUNDHOUSE**

EXHIBIT 2

FILE NAME = N:\WBK\150077\Civil\GRD_150077_02.sht	USER NAME = prozelan	DESIGNED - BMW	REVISED -	STATE OF ILLINOIS DEPARTMENT OF TRANSPORTATION	AURORA TRANSIT CENTER IMPROVEMENTS GRADING PLAN	F.A. RTE.	SECTION	COUNTY	TOTAL SHEETS	SHEET NO.	
Default	PLOT SCALE = 20'	DRAWN - PWN	REVISED -								
	PLOT DATE = 10/13/2015	CHECKED - BMW	REVISED -			SCALE: 20'	SHEET	OF 15 SHEETS	STA.	TO STA.	ILLINOIS FED. AID PROJECT
		DATE - 10/13/2015	REVISED -								



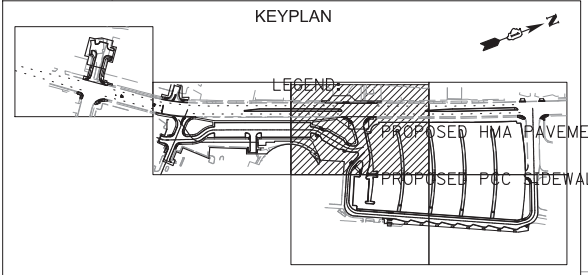
MATCH LINE SEE SHEET 10

MATCH LINE SEE SHEET 12

**TWO BROTHERS
ROUNDHOUSE**

**AURORA TRANSIT
CENTER**

THIS AREA TO
BE RESURFACED
(BY OTHERS)

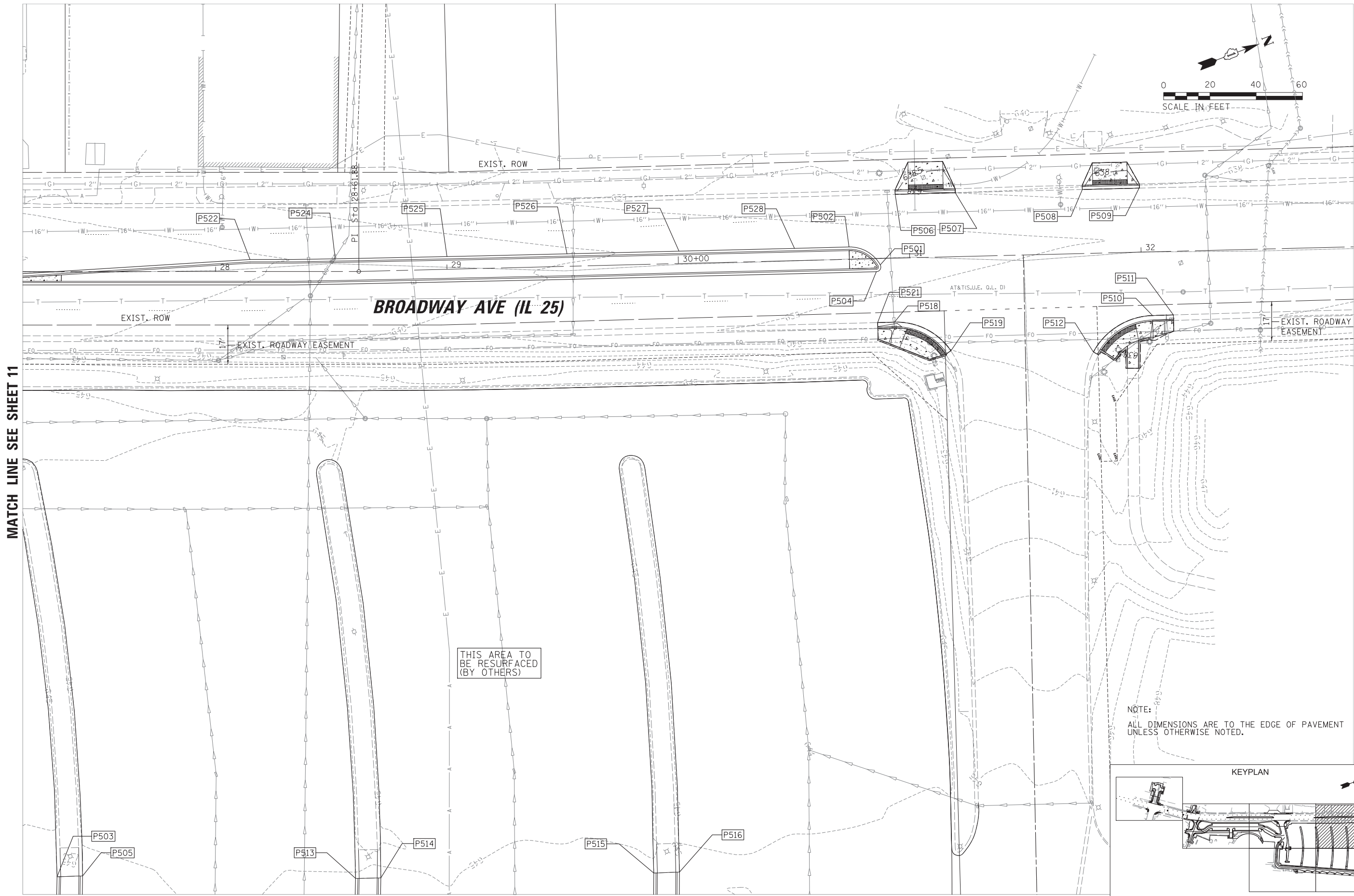
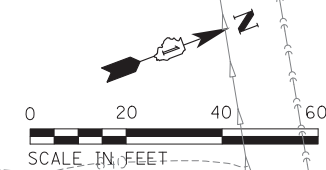


NOTE:
SEE SHEET 15 FOR POINT TABLE.

MATCH LINE SEE SHEET 13

EXHIBIT 2

FILE NAME = N:\WBK\150077\Civil\GRD_150077_03.sht	USER NAME = prozelan	DESIGNED - BMW	REVISED -	STATE OF ILLINOIS DEPARTMENT OF TRANSPORTATION	AURORA TRANSIT CENTER IMPROVEMENTS GRADING PLAN			F.A. RTE.	SECTION	COUNTY	TOTAL SHEETS	SHEET NO.
Default	PLOT SCALE = 28'	DRAWN - PWN	REVISED -		SCALE: 28'	SHEET	OF 15 SHEETS	STA.	TO STA.	KANE	15	11
	PLOT DATE = 10/13/2015	CHECKED - BMW	REVISED -							CONTRACT NO.		
		DATE - 10/13/2015	REVISED -							ILLINOIS FED. AID PROJECT		

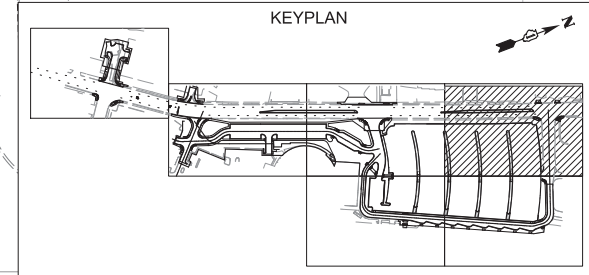


MATCH LINE SEE SHEET 11

BROADWAY AVE (IL 25)

THIS AREA TO BE RESURFACED (BY OTHERS)

NOTE:
ALL DIMENSIONS ARE TO THE EDGE OF PAVEMENT UNLESS OTHERWISE NOTED.



MATCH LINE SEE SHEET 14

EXHIBIT 2

FILE NAME = N:\WBK\150077\Civil\GRD_150077_04.sht	USER NAME = prozelan	DESIGNED - BMW	REVISED -
Default	PLOT SCALE = 20'	DRAWN - PWN	REVISED -
	PLOT DATE = 10/13/2015	CHECKED - BMW	REVISED -
		DATE - 10/13/2015	REVISED -

**STATE OF ILLINOIS
DEPARTMENT OF TRANSPORTATION**

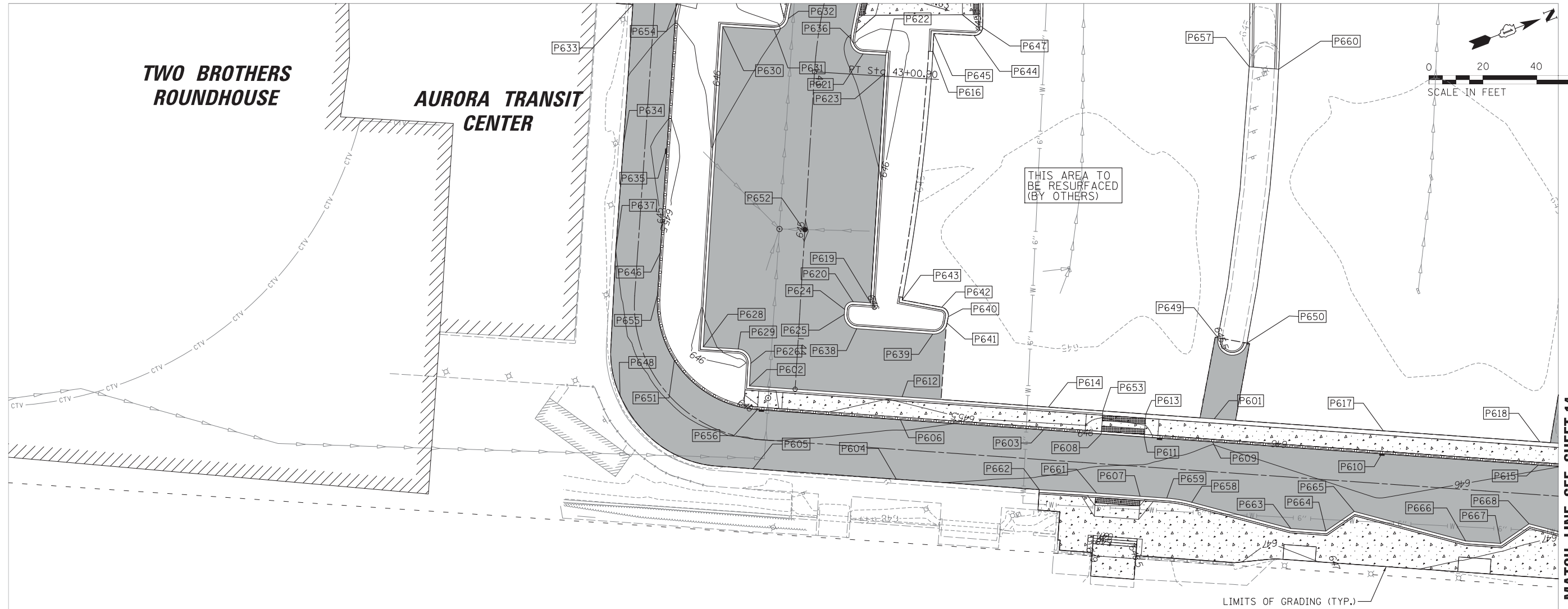
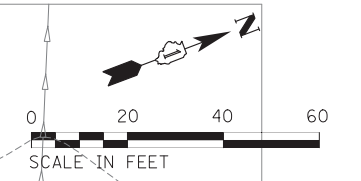
AURORA TRANSIT CENTER IMPROVEMENTS GRADING PLAN			
SCALE: 20'	SHEET	OF 15 SHEETS	STA. TO STA.

F.A. RTE.	SECTION	COUNTY	TOTAL SHEETS	SHEET NO.
		KANE	15	12
CONTRACT NO.				
ILLINOIS FED. AID PROJECT				

MATCH LINE SEE SHEET 10

**TWO BROTHERS
ROUNDHOUSE**

**AURORA TRANSIT
CENTER**



LEGEND:

	PROPOSED HMA PAVEMENT
	PROPOSED PCC SIDEWALK

NOTE:
SEE SHEET 15 FOR POINT TABLE.

LIMITS OF GRADING (TYP.)

MATCH LINE SEE SHEET 14

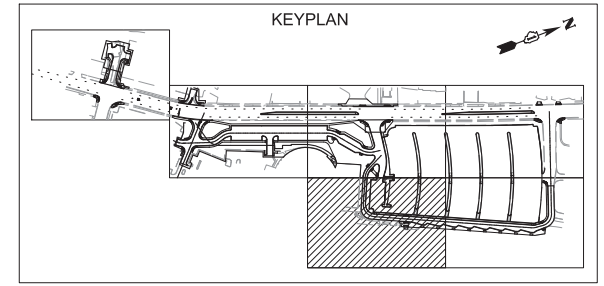
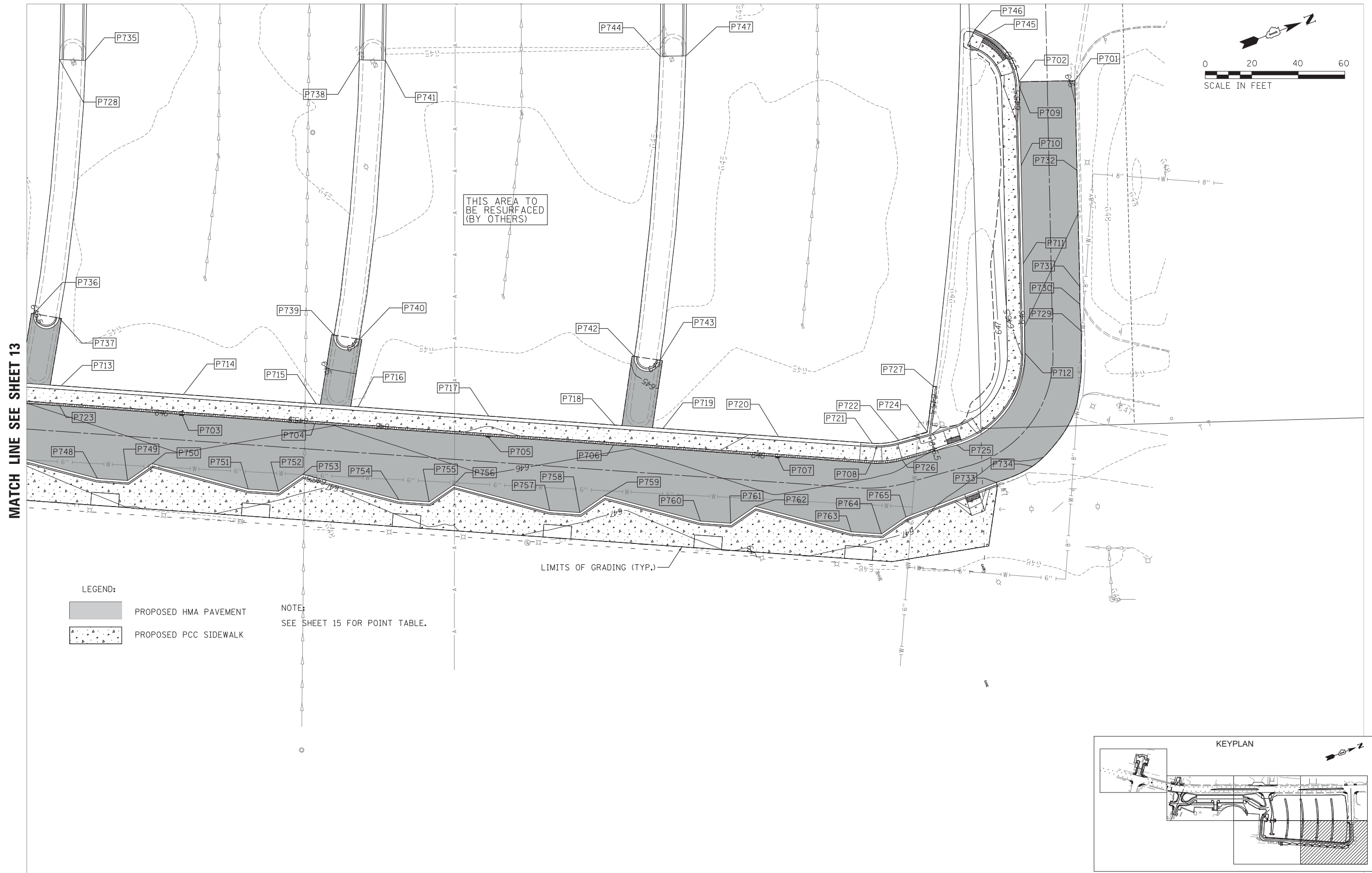


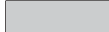
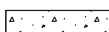
EXHIBIT 2

FILE NAME = N:\WBK\150077\Civil\GRD_150077_05.sht	USER NAME = prozelan	DESIGNED - BMW	REVISED -	STATE OF ILLINOIS DEPARTMENT OF TRANSPORTATION	AURORA TRANSIT CENTER IMPROVEMENTS GRADING PLAN		F.A. RTE.	SECTION	COUNTY	TOTAL SHEETS	SHEET NO.	
Default	PLOT SCALE = 20'	DRAWN - PWN	REVISED -						KANE	15	13	
	PLOT DATE = 10/13/2015	CHECKED - BMW	REVISED -		SCALE: 20'	SHEET	OF 15 SHEETS	STA.	TO STA.	ILLINOIS FED. AID PROJECT		
		DATE - 10/13/2015	REVISED -									

MATCH LINE SEE SHEET 12



MATCH LINE SEE SHEET 13

LEGEND:
 PROPOSED HMA PAVEMENT
 PROPOSED PCC SIDEWALK

NOTE:
 SEE SHEET 15 FOR POINT TABLE.

LIMITS OF GRADING (TYP.)

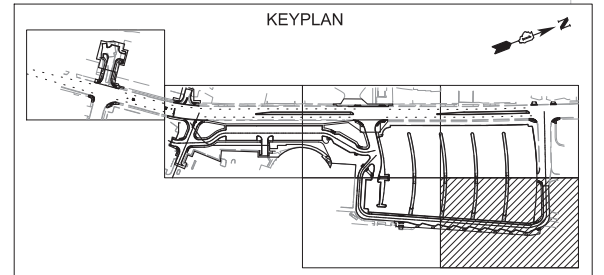
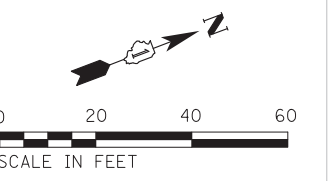


EXHIBIT 2

FILE NAME = N:\WBK\150077\Civil\GRD_150077_06.sht	USER NAME = prozelan	DESIGNED - BMW	REVISED -	STATE OF ILLINOIS DEPARTMENT OF TRANSPORTATION	AURORA TRANSIT CENTER IMPROVEMENTS GRADING PLAN		F.A. RTE.	SECTION	COUNTY	TOTAL SHEETS	SHEET NO.	
Default	PLOT SCALE = 28'	DRAWN - PWN	REVISED -		SCALE: 28'	SHEET	OF 15 SHEETS	STA.	TO STA.	KANE	15	14
	PLOT DATE = 10/13/2015	CHECKED - BMW	REVISED -							CONTRACT NO.		
		DATE - 10/13/2015	REVISED -							ILLINOIS FED. AID PROJECT		

POINT TABLES

EDGE OF PAVEMENT POINTS			
POINT	NORTHING	EASTING	ELEVATION
P101	1854867.87	990316.68	648.87
P102	1854909.79	990257.74	646.78
P103	1854835.37	990305.43	649.02
P104	1854886.01	990234.25	646.57
P105	1854800.96	990311.62	649.13
P107	1854876.14	990365.51	649.73
P109	1854875.05	990210.26	645.82
P110	1854878.13	990211.19	645.81
P111	1854898.65	990192.33	644.62
P112	1854902.45	990193.48	644.63
P113	1854919.02	990187.82	644.27
P116	1854897.29	990189.94	644.52
P117	1854901.15	990174.26	643.68
P119	1854872.60	990211.45	645.92
P120	1854867.50	990224.65	646.60
P122	1854859.57	990221.59	646.66
P123	1854930.72	990254.22	646.46
P125	1854941.09	990213.73	644.61
P126	1854944.56	990234.61	645.76
P128	1854945.92	990206.95	644.27
P130	1854930.67	990254.18	646.45
P131	1854941.67	990261.94	646.70
P132	1854944.51	990234.57	645.76
P133	1854954.53	990241.65	646.21
P134	1854925.36	990261.70	646.89
P135	1854936.36	990269.46	646.90
P136	1854951.20	990225.09	646.05
P137	1854961.22	990232.17	646.06
P140	1854962.61	990240.25	646.27
P141	1854942.77	990268.36	646.84
P142	1854865.32	990207.31	645.87
P143	1854879.81	990185.64	644.56
P144	1854883.82	990169.34	643.77
P145	1854890.28	990171.60	643.63
P146	1854760.39	990350.99	648.82
P147	1854769.02	990357.61	648.91
P148	1854770.59	990377.08	649.16
P149	1854766.83	990382.12	649.11
P151	1854851.64	990416.52	649.61
P152	1854811.79	990415.83	648.98
P154	1854882.07	990369.76	649.86
P201	1855387.44	990786.92	648.00
P202	1855406.77	990778.18	648.52
P203	1855018.72	990714.81	647.72
P204	1855364.98	990778.44	648.71
P205	1855356.25	990759.11	649.21
P206	1855034.75	990729.88	647.75
P207	1855334.56	990830.71	645.30
P208	1855339.22	990818.38	645.64
P209	1855337.29	990837.08	645.27
P210	1855130.41	990606.46	649.59
P211	1855343.91	990834.24	645.72
P212	1855353.18	990757.95	649.25
P213	1855411.18	990779.85	648.46
P214	1855412.93	990783.72	648.37
P215	1855407.63	990797.75	648.15
P216	1855349.31	990759.70	649.24
P217	1855344.01	990773.73	649.02
P218	1855240.61	990686.64	648.06
P219	1855245.93	990672.56	647.84
P220	1855380.67	990668.50	648.48
P221	1855441.43	990684.13	648.13
P222	1855379.46	990672.31	648.43
P224	1855017.81	990762.47	646.55
P225	1855018.52	990763.14	646.51
P226	1855180.80	990620.97	649.53
P227	1855235.33	990700.63	648.29
P229	1855033.75	990545.90	650.10
P230	1855111.82	990627.55	649.21
P232	1855108.34	990678.16	648.20
P233	1855135.35	990606.00	649.62

EDGE OF PAVEMENT POINTS			
POINT	NORTHING	EASTING	ELEVATION
P234	1855135.99	990606.29	649.62
P235	1855236.84	990688.42	648.12
P236	1855505.36	990853.58	644.70
P237	1855363.51	990850.30	645.41
P238	1855330.76	990837.94	645.18
P239	1855338.28	990818.02	645.64
P240	1854993.85	990741.26	647.16
P241	1855017.83	990763.86	646.53
P242	1855224.73	990728.69	647.84
P243	1855364.53	990717.34	649.01
P244	1855154.33	990696.39	648.53
P248	1855153.42	990720.38	648.53
P249	1855176.42	990717.51	648.43
P250	1855200.19	990710.54	648.30
P251	1855228.10	990710.81	648.13
P253	1855193.43	990687.51	648.30
P254	1855169.66	990694.49	648.43
P256	1855338.29	990817.99	645.64
P257	1855230.01	990714.73	648.06
P261	1855017.39	990748.35	647.15
P262	1855059.45	990703.60	648.08
P264	1855110.56	990653.60	648.79
P265	1855131.02	990631.84	649.15
P266	1855162.77	990617.67	649.60
P268	1855115.05	990629.85	649.23
P269	1855121.55	990622.93	649.35
P270	1855136.19	990611.66	649.52
P273	1855096.11	990586.71	649.77
P274	1855092.20	990636.64	648.80
P276	1855018.08	990644.96	647.32
P277	1855020.30	990646.98	647.38
P278	1855000.99	990664.02	647.87
P279	1855073.05	990657.01	648.46
P280	1855024.57	990708.58	647.80
P281	1855051.92	990662.20	648.05
P282	1855037.54	990657.21	647.78
P285	1855019.19	990677.12	647.64
P287	1855118.58	990686.20	648.33
P288	1855140.40	990693.77	648.44
P289	1855080.58	990698.41	648.17
P290	1855132.53	990716.44	648.44
P294	1855154.68	990708.41	648.71
P295	1855124.09	990496.13	648.87
P296	1855114.73	990525.29	649.91
P297	1855113.12	990524.41	649.92
P299	1855133.18	990505.72	649.13
P300	1855113.33	990520.81	649.81
P303	1855119.95	990525.03	649.78
P304	1855136.44	990508.02	649.07
P308	1855151.88	990501.81	648.54
P309	1855165.00	990482.85	648.43
P310	1855144.02	990468.02	648.04
P311	1855155.05	990545.58	649.73
P313	1855089.90	990510.55	650.19
P315	1855169.17	990554.92	649.58
P316	1855078.49	990684.98	648.31
P319	1855074.85	990504.44	650.17
P416	1855354.61	990745.66	649.47
P223	1855632.39	990855.83	644.81
P228	1855772.72	990985.24	645.72
P231	1855769.48	991008.35	645.60
P284	1855754.51	990982.06	645.70
P401	1855726.38	991047.04	645.38
P402	1855749.87	991035.66	645.25
P403	1855750.41	990801.18	645.29
P404	1855760.00	990813.50	644.93
P405	1855792.30	990975.20	646.02
P406	1855756.97	990815.44	644.95
P407	1855823.88	990952.32	644.70
P408	1855869.16	990881.18	643.39
P409	1855884.19	990886.81	643.23

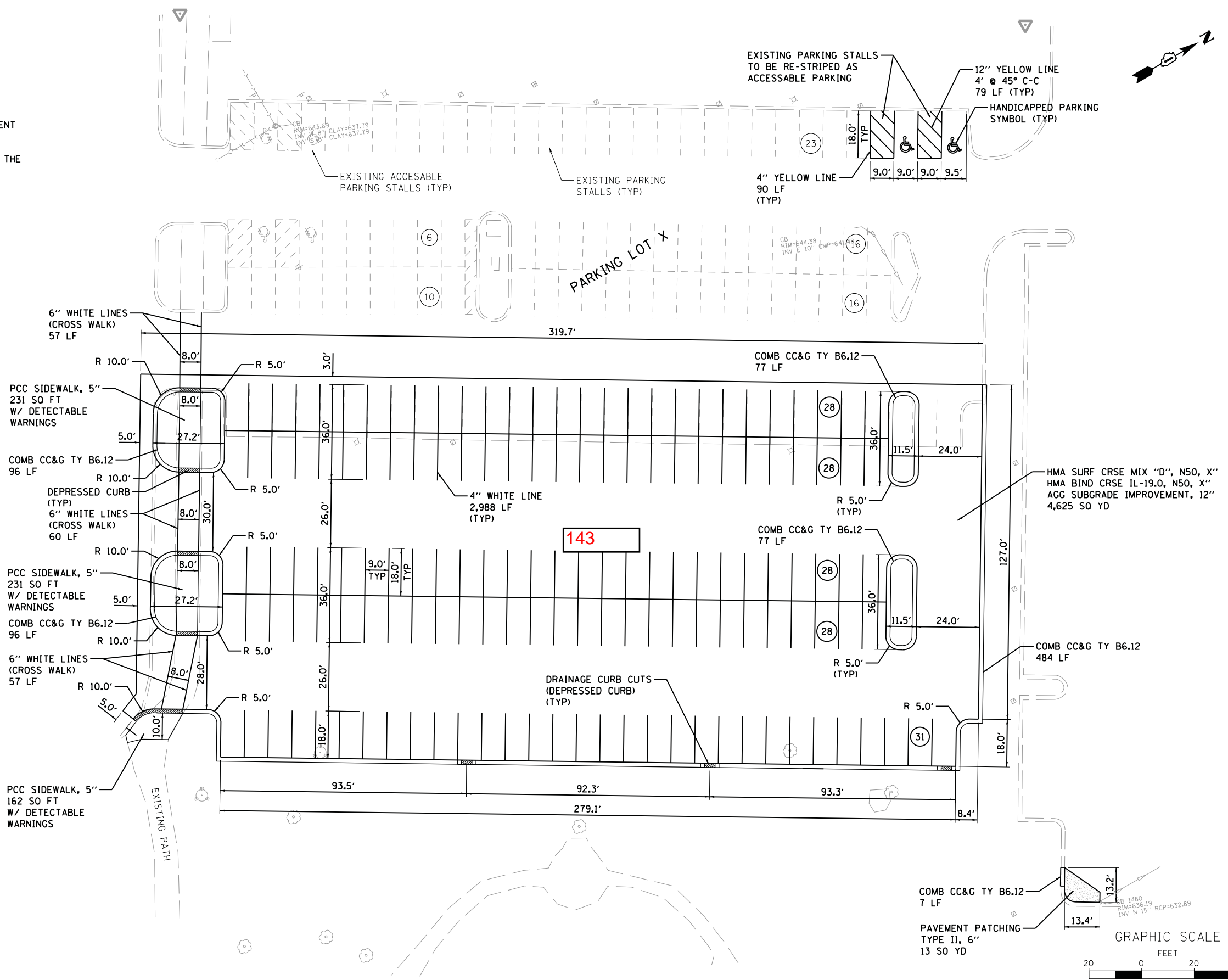
EDGE OF PAVEMENT POINTS			
POINT	NORTHING	EASTING	ELEVATION
P410	1855843.04	990935.94	644.57
P411	1855841.82	990939.50	644.70
P412	1855819.55	990910.68	644.69
P413	1855845.97	990928.58	644.56
P414	1855805.76	991008.72	645.62
P415	1855673.41	990871.38	644.69
P417	1855722.70	990931.80	645.08
P418	1855777.06	991078.06	645.36
P419	1855765.63	991093.24	645.28
P420	1855624.42	990864.80	644.63
P421	1855631.40	990872.08	644.69
P423	1855637.99	990880.16	644.74
P424	1855640.87	990897.93	644.69
P425	1855609.08	990841.74	645.22
P426	1855690.16	990958.35	645.08
P427	1855705.99	990964.74	645.29
P428	1855753.67	990994.24	645.53
P430	1855758.19	991011.18	645.49
P431	1855745.45	991020.02	645.51
P433	1855713.40	991032.64	645.63
P434	1855598.48	990869.81	644.77
P435	1855603.75	990855.85	644.99
P436	1855614.36	990827.76	644.99
P437	1855619.67	990813.68	644.77
P438	1855615.01	990831.59	645.00
P440	1855775.52	990958.11	645.68
P441	1855757.69	990970.49	645.52
P443	1855725.58	990949.57	645.29
P444	1855655.59	990864.99	644.74
P445	1855607.76	990854.16	644.98
P446	1855650.00	990856.91	644.69
P447	1855640.35	990846.86	644.63
P450	1855754.80	991067.73	645.35
P451	1855745.46	991078.80	645.28
P452	1855764.08	991046.41	645.45
P456	1855793.15	991096.02	645.15
P457	1855807.32	991100.36	645.21
P458	1855825.03	990941.69	645.23
P459	1855835.59	990942.85	644.79
P461	1855809.27	991104.22	645.21
P463	1855751.32	990776.44	644.10
P464	1855775.87	990787.12	643.88
P465	1855897.39	990832.78	642.86
P466	1855907.00	990836.51	642.80
P467	1855778.11	990946.83	645.56
P468	1855782.50	990886.86	644.50
P469	1855753.36	990836.46	644.39
P471	1856085.55	990935.79	641.93
P472	1856085.25	990939.57	641.99
P474	1855900.19	991144.15	645.04
P477	1855911.03	991148.34	645.05
P501	1856447.70	991067.37	639.25
P502	1856437.80	991055.36	639.51
P503	1856021.42	991188.94	645.20
P504	1856445.06	991069.55	639.22
P505	1856031.87	991192.54	645.16
P506	1856464.48	991041.14	638.11
P507	1856489.03	991049.70	638.00
P508	1856540.87	991067.79	637.74
P509	1856564.05	991075.90	637.63
P510	1856549.97	991129.47	638.12
P511	1856558.49	991132.41	638.12
P512	1856520.50	991135.20	638.32
P513	1856141.82	991235.24	645.04
P514	1856152.10	991238.91	645.15
P515	1856263.15	991278.67	645.09
P516	1856273.69	991282.20	645.06
P518	1856444.68	991092.70	638.55
P519	1856463.14	991112.87	639.01
P521	1856437.80	991090.32	638.60
P522	1856193.79	990968.87	641.13

EDGE OF PAVEMENT POINTS			
POINT	NORTHING	EASTING	ELEVATION
P523	1856211.39	990975.53	640.99
P524	1856228.32	990981.60	640.84
P525	1856273.86	990997.78	640.48
P526	1856322.75	991015.09	640.12
P527	1856368.43	991031.03	639.85
P528	1856415.55	991047.58	639.63
P601	1855693.58	991226.47	645.12
P602	1855673.93	991217.41	645.44
P603	1855770.21	991271.28	645.67
P604	1855712.65	991269.02	645.97
P605	1855664.30	991246.62	645.86
P606	1855721.		

N RIVER ST

NOTES:

1. ALL DIMENSIONS ARE TO THE EDGE OF PAVEMENT UNLESS OTHERWISE NOTED.
2. ALL PAVEMENT MARKINGS SHALL BE PAINT OF THE SPECIFIED COLOR.



FILE NAME = W:\Projects\2015\150110 - REP Bridge\PH\cadd\Civil\Drawn\Shr\GM_01.dgn

WBK
 WILLS BURKE KELSEY ASSOCIATES LTD.
 116 West Main Street, Suite 201
 St. Charles, Illinois 60174

USER NAME = mbaldwin	DESIGNED - MNB	REVISED -
PLOT SCALE = 1:40	DRAWN - NDP	REVISED -
PLOT DATE = 10/29/2015	CHECKED -	REVISED -
	DATE - \$PDATE	REVISED -

STATE OF ILLINOIS
DEPARTMENT OF TRANSPORTATION

AURORA TRANSPORTATION CENTER IMPROVEMENTS
PARKING LOT X - GEOMETRIC PLAN
 SCALE: 1"=20' SHEET NO. 1 OF 2 SHEETS STA. TO STA.

F.A. RTE.	SECTION	COUNTY	TOTAL SHEETS	SHEET NO.
XX	SECTION NUM	KANE	\$TSHTS	\$GMI
			CONTRACT NO. XXXXXX	
ILLINOIS FED. AID PROJECT				

EXHIBIT 3

NOTES:

1. ALL DIMENSIONS ARE TO THE EDGE OF PAVEMENT UNLESS OTHERWISE NOTED.
2. STATION AND OFFSETS ARE REFERENCED TO THE PROPOSED BRIDGE ALIGNMENT.

FOX RIVER



PEDESTRIAN BRIDGE OVER FOX RIVER (SEE STRUCTURAL PLANS)

PROPOSED BRIDGE C

RETAINING WALLS (SEE STRUCTURAL PLANS)

RETAINING WALLS (SEE STRUCTURAL PLANS)

RIVEREDGE PARK

RIVEREDGE PARK

PROP MULTI USE PATH
HMA SURF CRSE MIX "D", N50, 3"
AGG SUBGRADE IMPROVEMENT, 12"
W/ 2' TURF SHOULDERS
300 SO YD

N BROADWAY (IL RTE 25)

AURORA TRANSPORTATION CENTER ENTRANCE

GRAPHIC SCALE



EXHIBIT 3

FILE NAME = W:\Projects\2015\1501010_RFP\bridge\plan\cadd\Civil\Dgn\Shr\GM_03.dgn

WILLIS BURKE KELSEY ASSOCIATES LTD.
116 West Main Street, Suite 201
St. Charles, Illinois 60174

USER NAME = mbaldwin	DESIGNED - MNB	REVISED -
PLOT SCALE = 1:40	DRAWN - NDP	REVISED -
PLOT DATE = 10/29/2015	CHECKED -	REVISED -
	DATE - \$PDATE	REVISED -

**STATE OF ILLINOIS
DEPARTMENT OF TRANSPORTATION**

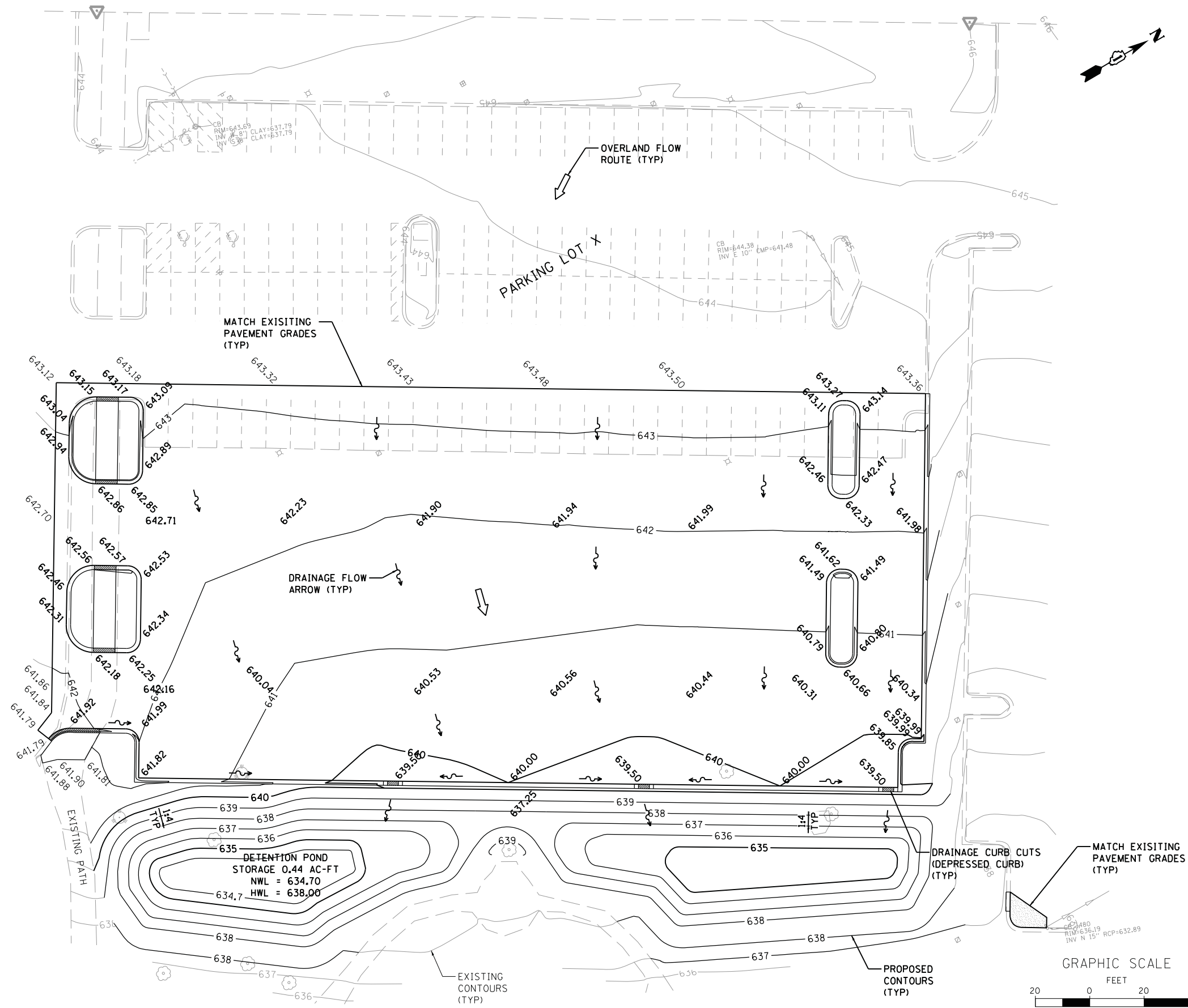
**AURORA TRANSPORTATION CENTER IMPROVEMENTS
PEDESTRIAN BRIDGE EAST TOUCH DOWN - GEOMETRIC PLAN**

SCALE: 1"=20' SHEET NO. 3 OF 3 SHEETS STA. TO STA.

F.A. RTE.	SECTION	COUNTY	TOTAL SHEETS	SHEET NO.
XX	SECTION NUM	KANE	\$TSHTS	\$GM3
			CONTRACT NO. XXXXXX	
ILLINOIS FED. AID PROJECT				

NOTES:

1. REFER TO THE GEOMETRIC PLAN SHEET FOR PARKING LOT DIMENSIONS AND LAYOUT.



FILE NAME = W:\Projects\2015\150110 - REP\bridge\Plan\cadd\Civil\Drawn\Sh\A\GR_01.dgn

WBK WILLS BURKE KELSEY ASSOCIATES LTD.
 116 West Main Street, Suite 201
 St. Charles, Illinois 60174

USER NAME = mbaldwin	DESIGNED - MNB	REVISED -
PLOT SCALE = 1:40	DRAWN - NDP	REVISED -
PLOT DATE = 10/29/2015	CHECKED -	REVISED -
	DATE - \$PDATE	REVISED -

**STATE OF ILLINOIS
 DEPARTMENT OF TRANSPORTATION**

**AURORA TRANSPORTATION CENTER IMPROVEMENTS
 PARKING LOT X - GRADING PLAN**

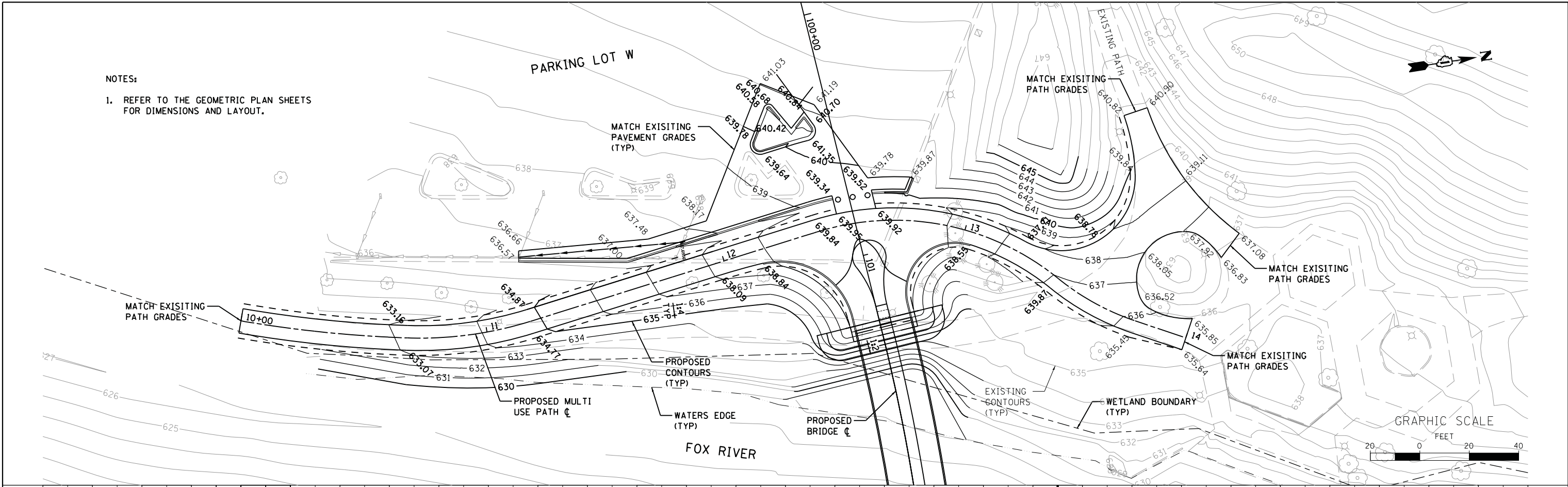
SCALE: 1"=20' SHEET NO. 1 OF 1 SHEETS STA. TO STA.

F.A. RTE.	SECTION	COUNTY	TOTAL SHEETS	SHEET NO.
		KANE	1	1
CONTRACT NO.				
ILLINOIS FED. AID PROJECT				

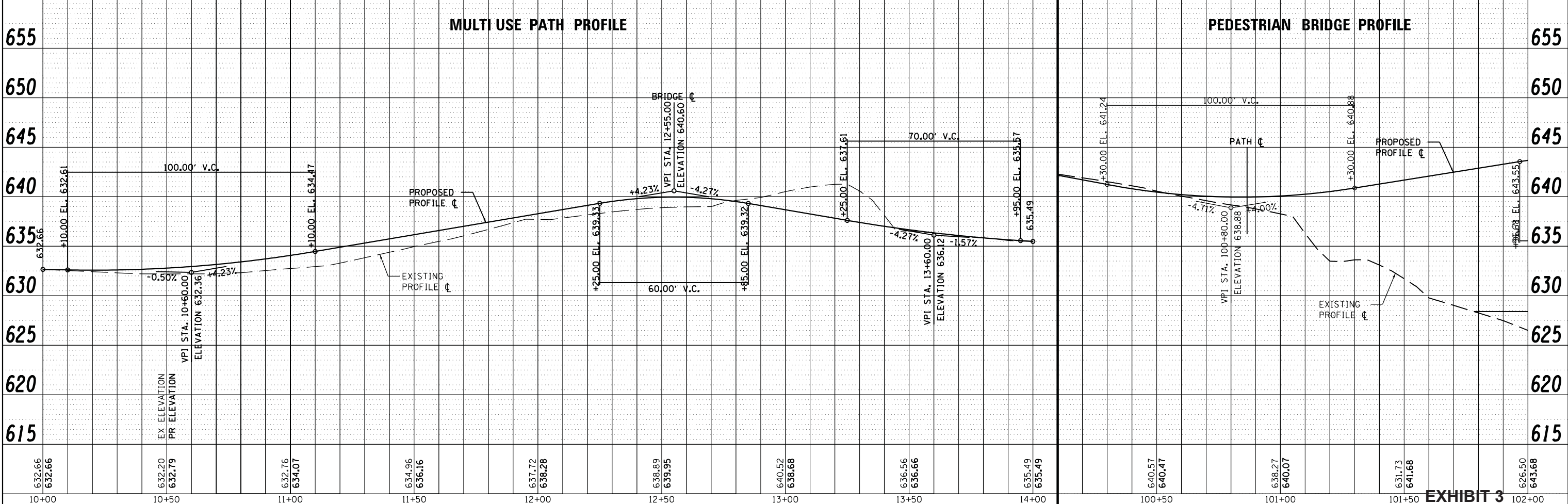
EXHIBIT 3

NOTES:
1. REFER TO THE GEOMETRIC PLAN SHEETS FOR DIMENSIONS AND LAYOUT.

PLAN	SURVEYED	DATE
	PLOTTED	
	ALIGNED	
	CHECKED	
	FILED	
	NO.	
	NO.	
	NO.	



PROFILE	SURVEYED	DATE
	PLOTTED	
	GRADES CHECKED	
	STRUCTURE	
	NOTATIS	
	NO.	
	NO.	
	NO.	



WILLS BURKE KELSEY ASSOCIATES LTD.
116 West Main Street, Suite 201
St. Charles, Illinois 60174

USER NAME = mbdwin	DESIGNED - MNB	REVISED -
PLLOT SCALE = 1:40	DRAWN - NDP	REVISED -
PLLOT DATE = 10/29/2015	CHECKED -	REVISED -
	DATE - \$PDATE	REVISED -

STATE OF ILLINOIS
DEPARTMENT OF TRANSPORTATION

AURORA TRANSPORTATION CENTER IMPROVEMENTS
PARKING LOT W & MULTI USE PATH - GRADING PLAN & PROFILE

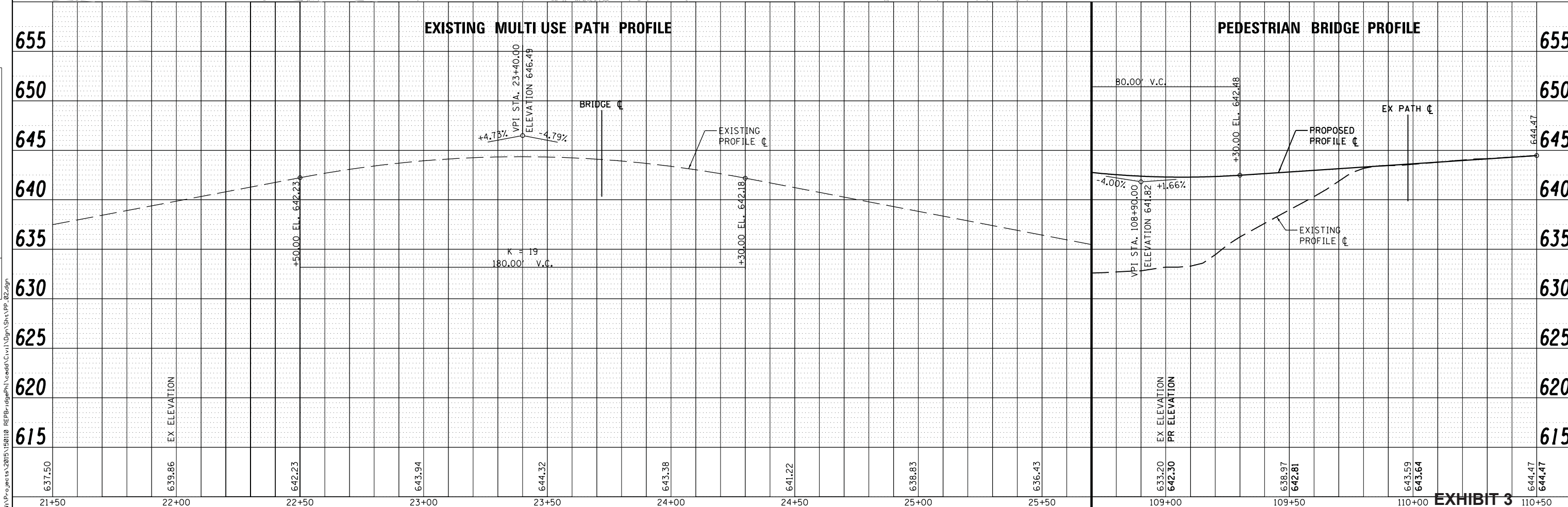
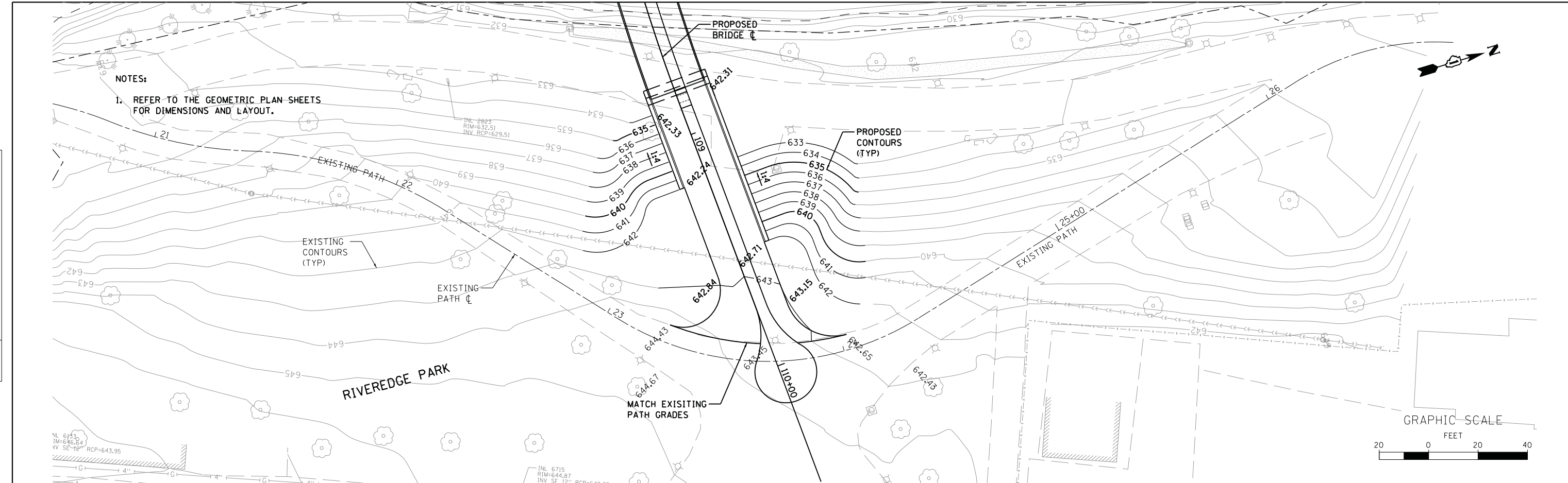
F.A. RTE. XX	SECTION	COUNTY	TOTAL SHEETS	SHEET NO.
	SECTION NUM	KANE	\$TSHTS	\$PPI
			CONTRACT NO. XXXXXX	
ILLINOIS FED. AID PROJECT				

EXHIBIT 3

FILE NAME = W:\Projects\150105\150110 - REP\Bridges\PH\cadd\Civil\Drawn\SHK\PP_Bldg.dgn

PLAN	SURVEYED	DATE
	PLOTTED	BY
	ALIGNED	
	CHECKED	
	FILED	
	NO.	

PROFILE	SURVEYED	DATE
	PLOTTED	BY
	GRADES	
	CHECKED	
	STRUCTURE	
	NOTATIONS	
	CHKD	
	NO.	



WILLS BURKE KELSEY ASSOCIATES LTD.
 116 West Main Street, Suite 201
 St. Charles, Illinois 60174

USER NAME = mbdwin	DESIGNED - MNB	REVISED -
PLOT SCALE = 1:40	DRAWN - NDP	REVISED -
PLOT DATE = 10/29/2015	CHECKED -	REVISED -
	DATE - \$PDATE	REVISED -

**STATE OF ILLINOIS
 DEPARTMENT OF TRANSPORTATION**

**AURORA TRANSPORTATION CENTER IMPROVEMENTS
 PEDESTRIAN BRIDGE EAST TOUCH DOWN - GRADING PLAN & PROFILE**

SCALE: 1"=20' SHEET NO. 2 OF 2 SHEETS STA. TO STA.

F.A. RTE.	SECTION	COUNTY	TOTAL SHEETS	SHEET NO.
XX	SECTION NUM	KANE	\$TSHTS	\$PP2
CONTRACT NO. XXXXXX			ILLINOIS FED. AID PROJECT	

EXHIBIT 3

FILE NAME = W:\Projects\150105\150110 - REP\bridge\plan\cadd\civil\Drawn\Shk\Sht\PP_02.dgn