

LANDSCAPE PLAN FOR POPEYE'S RESTAURANT

PERMANENT SEED BLEND

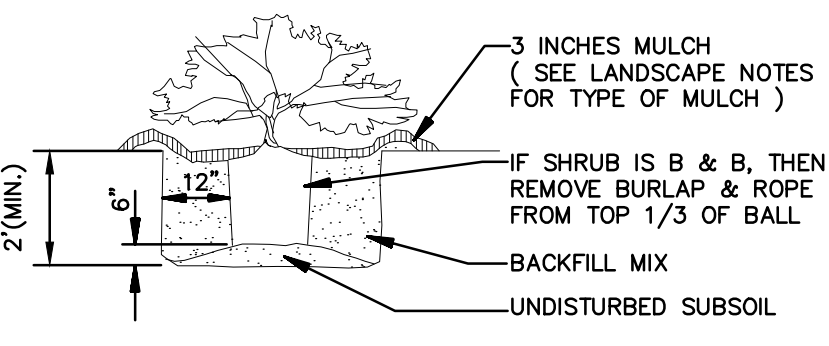
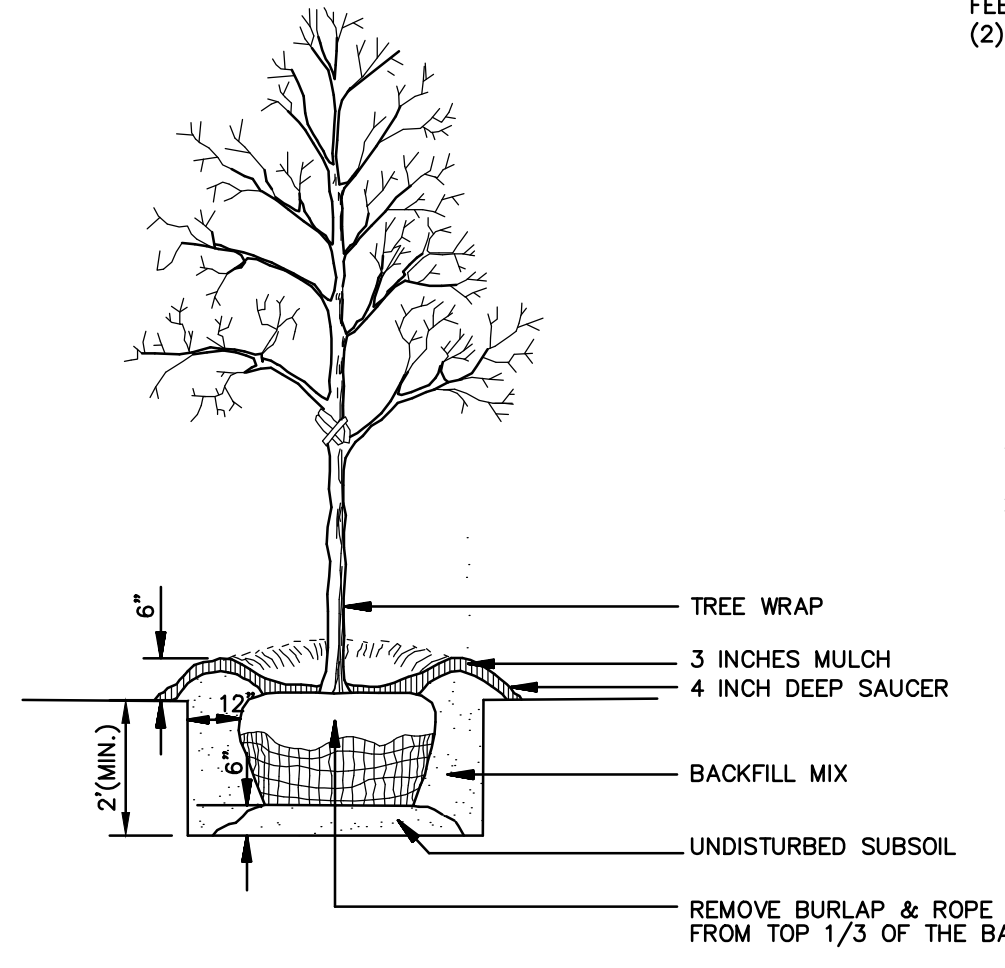
ALL FILL AND CUT SLOPES SHOULD BE SEEDED IMMEDIATELY AFTER CONSTRUCTION. SEED TO THE LANDSCAPE CONTRACTOR:

(1) 6# TURF TYPE TALL FESCUE (TRIPLE BLEND)
 8# 12-12 FERTILIZER
 1 1/2 BALES OF STRAW PER 1000 SQUARE FEET

FEET ON 2:1 OR STEEPER SLOPES USE:
 (2) 2# CROWNVECH
 1 1/2# TALL FESCUE
 1 1/2# PERENNIAL RYEGRASS
 20# 5-10-10 FERTILIZER
 2 BALES OF STRAW PER 1000 SQUARE FEET

LANDSCAPE NOTES

- LOCATING AND PROTECTING ALL UNDERGROUND UTILITIES, PRIOR TO DIGGING, IS RESPONSIBILITY OF THE LANDSCAPE CONTRACTOR.
- PRIOR TO INSTALLATION, THE LANDSCAPE CONTRACTOR SHALL INSPECT THE SUB GRADE GENERAL SITE CONDITIONS, VERIFY ELEVATIONS, UTILITY LOCATIONS, IRRIGATION, APPROVE TOPSOIL PROVIDED BY GENERAL CONTRACTOR AND OBSERVE THE SITE CONDITIONS UNDER WHICH THE WORK IS TO BE DONE. NOTIFY GENERAL CONTRACTOR OF ANY UNSATISFACTORY CONDITIONS. WORK SHALL NOT PROCEED UNTIL SUCH CONDITIONS HAVE BEEN CORRECTED AND ARE ACCEPTABLE TO THE LANDSCAPE CONTRACTOR AND/OR CONSTRUCTION MANAGER.
- GENERAL AND LANDSCAPE CONTRACTOR ARE RESPONSIBLE FOR PROTECTING EXISTING TREES FROM DAMAGE DURING CONSTRUCTION. GENERAL CONTRACTOR TO INSTALL TREE PROTECTION FENCING PRIOR TO ANY SITE WORK.
- ALL SHRUB AND GROUND COVER BEDS TO BE MULCHED WITH A MINIMUM OF 3 INCHES OF CLEAN SHREDDED HARDWOOD MULCH.
- PLANTING HOLES TO BE DUG A MINIMUM OF TWICE THE WIDTH AND 6-12 INCHES DEEPER THAN THE SIZE OF THE ROOT BALL OF BOTH SHRUB AND TREE. AMEND BACKFILL WITH TOPSOIL MIX. BACKFILL AND TAMP BOTTOM OF HOLE PRIOR TO PLANTING SO TOP OF ROOT BALL DOES NOT SETTLE BELOW SURROUNDING GRADE.
- TOPSOIL MIX TO BE 4 PARTS SCREENED TOPSOIL AND 1 PART ORGANIC MATERIAL (i.e. NATURE'S HELPER OR PRO MIX).
- EXISTING GRASS IN PROPOSED PLANTING AREAS TO BE REMOVED AND AREA TO BE HAND RAKED TO REMOVE ALL ROOTS AND DEBRIS LARGER THAN 1 INCH IN DIAMETER PRIOR TO PLANTING SHRUBS.
- SOIL TO BE TESTED TO DETERMINE FERTILIZER AND LIME REQUIREMENTS. LIME AND FERTILIZER TO BE DISTRIBUTED PRIOR TO SPREADING SEED. ALL DISTURBED AREAS NOT RECEIVING PLANTINGS (INCLUDING RIGHT-OF-WAYS) SHALL RECEIVE SIX INCHES OF TOPSOIL AND SEED.
- ALL CHANGES TO DESIGN AND/OR PLANT SUBSTITUTIONS TO BE AUTHORIZED BY LANDSCAPE ARCHITECT.
- ALL PARKING ISLANDS TO BE BERMED UP 6"-10" WITH CLEAN FRIABLE TOPSOIL PRIOR TO PLANTING.
- ALL LANDSCAPING SHALL BE INSTALLED IN CONFORMANCE WITH ANSI Z60.1 THE AMERICAN STANDARD FOR NURSERY STOCK, AND THE ACCEPTED STANDARDS OF THE AMERICAN ASSOCIATION OF NURSERMEN.
- THE LANDSCAPE CONTRACTOR SHALL GUARANTEE ALL PLANTS INSTALLED FOR ONE YEAR FROM DATE OF ACCEPTANCE BY THE OWNER. ALL PLANTS SHALL BE ALIVE AND AT A VIGOROUS RATE OF GROWTH AT THE END OF THE GUARANTEE PERIOD. THE LANDSCAPE CONTRACTOR SHALL NOT BE RESPONSIBLE FOR ACTS OF GOD OR VANDALISM.
- ANY PLANT THAT IS DETERMINED DEAD, IN UNHEALTHY OR UNSIGHTLY CONDITION, LOST ITS SHAPE DUE TO DEAD BRANCHES OR OTHER SYMPTOMS OF POOR, NON-VIGOROUS GROWTH SHALL BE REPLACED BY THE LANDSCAPE CONTRACTOR AT THE COST OF THE REPLACEMENT INCLUDED IN THE BID OR PROPOSAL PRICE.
- WATER THOROUGHLY TWICE IN THE FIRST 24 HOURS AND APPLY MULCH IMMEDIATELY.



SHRUB PLANTING

N.T.S.

NOTE: SEE LANDSCAPE NOTES FOR THE TYPE OF MULCH MATERIAL TO USE.

TREE PLANTING

N.T.S.

Landscape Data Table: CTEs Provided		
CTE Value	Count Provided	Total CTEs Provided
Canopy Trees	1	24
Evergreen Trees	1/3	12
Understory Trees	1/3	12
Deciduous Shrubs	1/20	76
Evergreen Shrubs	1/20	98
Oversizing Credit		0
Total:	222	41

Landscape Data Table: Planting Material Key

Symbol	Count
+	24
○	12
○	12
○	98
○	76
○	0
+	38
○	0
○	11,000
○	0
○	0

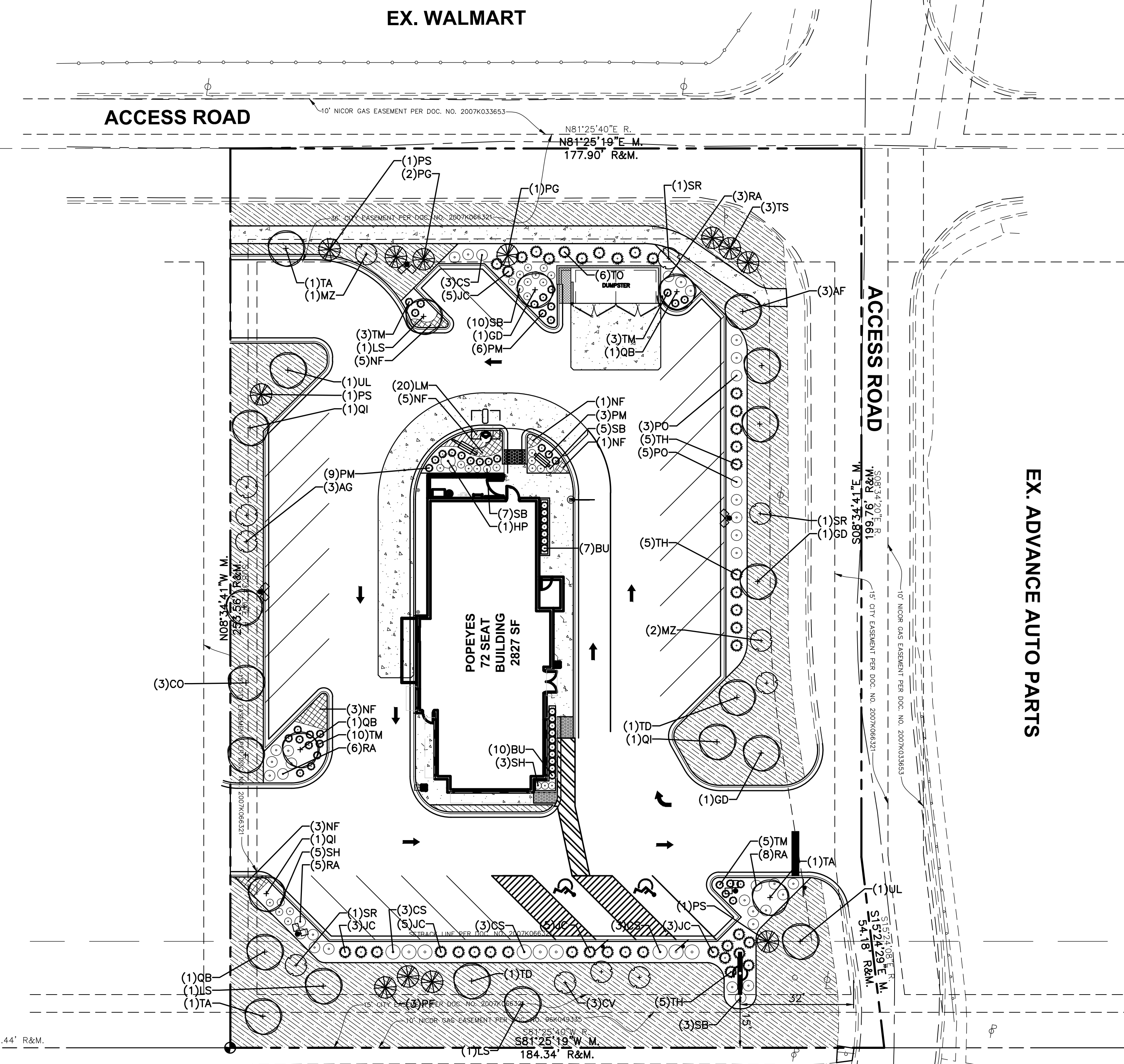
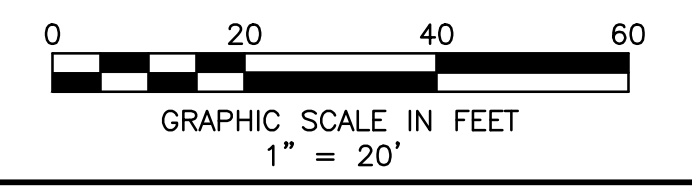
Landscape Implementation Data Table: Plant List by Category							
	QTY	Percent	SYM	BOTANICAL NAME (Family / Genus / Species)	COMMON NAME	SIZE	COMMENTS
Canopy Trees	3	12%	AF	Acer x freemanii 'Autumn Fantasy'	Autumn Fantasy Maple	B&B, 2.5" cal.	Full, well shaped
	3	12%	CO	Celtis occidentalis 'Chicagoland'	Chicagoland Hackberry	B&B, 2.5" cal.	Full, well shaped
	3	12%	GD	Gymnocladus dioica 'Espresso'	Espresso KY Coffeetree	B&B, 2.5" cal.	Full, well shaped
	3	12%	LS	Liquidambar styraciflua 'Moraine'	Moraine Sweetgum	B&B, 2.5" cal.	Full, well shaped
	3	12%	QB	Quercus bicolor	Swamp White Oak	B&B, 2.5" cal.	Full, well shaped
	3	12%	QI	Quercus imbricaria	Shingle Oak	B&B, 2.5" cal.	Full, well shaped
	2	8%	TD	Taxodium distichum	Bald Cypress	B&B, 2.5" cal.	Full, well shaped
	3	12%	TA	Tilia americana 'Redmond'	Redmond American Linden	B&B, 2.5" cal.	Full, well shaped
	2	8%	UL	Ulmus 'Morton Glossy'	Triumph Elm	B&B, 2.5" cal.	Full, well shaped
	Total:	25	100%				
Evergreen Trees	3	25%	PG	Picea glauca 'Densata'	Black Hills Spruce	B&B, 6" ht.	Full to ground, well shaped
	3	25%	PF	Pinus flexilis	Limber Pine	B&B, 6" ht.	Full to ground, well shaped
	3	25%	PS	Pseudotsuga menziesii	Douglas Fir	B&B, 6" ht.	Full to ground, well shaped
	3	25%	TS	Thuja standishi x plicata 'Green Giant'	Green Giant Arborvitae	B&B, 6" ht.	Full to ground, well shaped
Total:	12	100%					
Understory Trees	3	25%	AG	Amelanchier x grandiflora 'Autumn Brilliance'	Autumn Brilliance Serviceberry	B&B, 2.5" cal.	Full, well shaped, single-stem
	3	25%	CV	Crataegus viridis 'Winter King'	Winter King Hawthorn	B&B, 2.5" cal.	Full, well shaped, single-stem
	3	25%	MZ	Malus x zumi var 'Calocarpa'	Zumi Crabapple	B&B, 2.5" cal.	Full, well shaped, single-stem
	3	25%	SR	Syringa reticulata 'Ivory Silk'	Ivory Silk Japanese Tree Lilac	B&B, 2.5" cal.	Full, well shaped, single-stem
	Total:	12	100%				
Deciduous Shrubs	12	16%	CS	Cornus sericea 'Isanti'	Redtwig Dogwood	B&B, 24" ht.	Full, vigorous
	1	1%	HP	Hydrangea paniculata 'Limelight'	Limelight Hydrangea Tree	B&B, 6" ht.	On 24" standard, tree form
	8	11%	PO	Physocarpus opulifolius 'Donna May'	Little Devil Ninebark	#3 cont., 18" ht.	Full, vigorous
	22	29%	RA	Rhus aromatica 'Gro-Low'	Gro-Low Fragrant Sumac	#3 cont., 18" ht.	Full, vigorous
	25	33%	SB	Spiraea betulifolia 'Tor'	Tor Birchleaf Spirea	#3 cont., 18" ht.	Full, vigorous
	8	11%	SH	Spiraea japonica 'Shirobana'	Shirobana Spirea	#3 cont., 18" ht.	Full, vigorous
	Total:	76	100%				
	Evergreen Shrubs	17	17%	BU	Buxus x 'Glencoe'	Chicagoland Green Boxwood	#3 cont., 18" ht.
21		21%	JC	Juniperus chinensis 'Sea Green'	Sea Green Juniper	B&B, 24" ht.	Full, vigorous
18		18%	PM	Pinus mugo 'Mops'	Dwarf Mugo Pine	#3 cont., 18" ht.	Full, vigorous
21		21%	TM	Taxus x media 'Everlow'	Everlow Yew	#3 cont., 18" ht.	Full, vigorous
15		15%	TH	Thuja occidentalis 'Woodwardii'	Woodward Globe Arborvitae	#3 cont., 18" ht.	Full, vigorous
6		6%	TO	Thuja occidentalis 'Techny'	Techny Arborvitae	B&B, 36" ht.	Full, vigorous
Total:	98	100%					
Grass / Perennials	20	53%	LM	Liriope muscari 'Big Blue'	Big Blue Lilyturf	#1 cont.	Full, vigorous
	18	47%	NF	Nepeta x faassenii 'Walker's Low'	Walker's Low Catmint	#1 cont.	Full, vigorous
Total:	38	100%					

BENCHMARK:

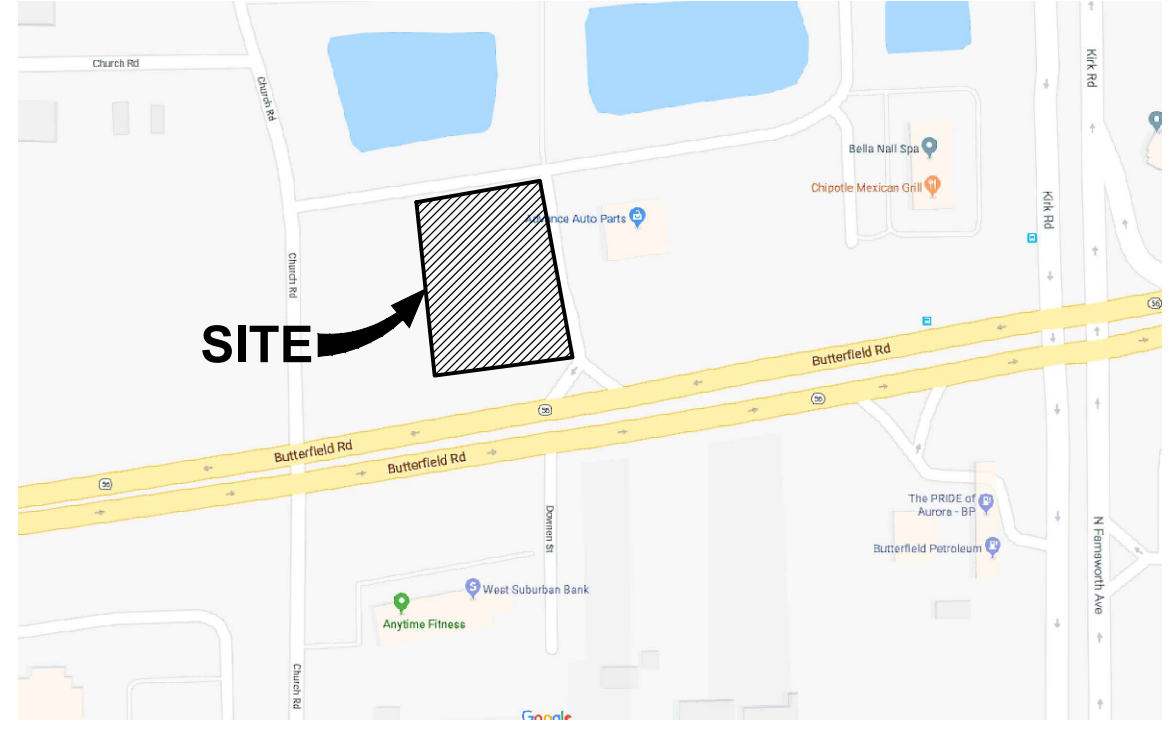
THE BASIS OF ELEVATIONS HEREON IS NAVD 88 - 5/8" REBAR FOUND - SEE DRAWING FOR LOCATION.

ELEVATION = 753.83'

THE EXISTING CONDITIONS SHOWN ARE BASED UPON A SURVEY PREPARED BY WOOLPERT AND DATED JANUARY 24, 2018.



LOCATION MAP



Layout Tab Name: C500 LANDSCAPE PLAN, Images: vicinity map.PNG, Aurora aerial.jpg, Xrefs: 78283-TBLK.dwg, 78283-X.dwg, 78283-P.dwg, 78283-X-DIG.dwg
 Last Saved By: mofortj, 10/29/2018 1:18:15 PM
 G:\DE\Projects\Z&H Foods\078283 Popeyes - Aurora, IL\4.0 Disciplines\Civil\Cadd\Cad\78283-2500-LAN.dwg Plotted By: Cooke, Jake Plotted: October 29, 2018, 1:36:33 PM

REVISION	No.	DATE	REVISION	COMMENTS
	1	10/15/18		REVISED PER CITY COMMENTS

PROJECT No: 078283
 DATE: 08/02/18
 DESIGNED BY: JM
 DRAWN BY: JM
 CHECKED BY: RW

1815 South Meyers Road
 Suite 950
 Oakbrook Terrace, IL 60181
 630.424.9080
 FAX: 630.495.3731

WOOLPERT
 ARCHITECTURAL ENGINEERING & INTERIORS

SITE IMPROVEMENT PLANS POPEYE'S RESTAURANT 1382 BUTTERFIELD ROAD, AURORA, IL 60502 SAVANNAH CROSSINGS, LOT 10 LANDSCAPE PLAN

SHEET NO.

C500