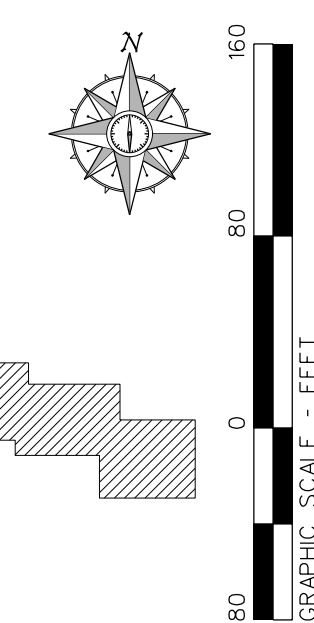


# LANDSCAPE PLAN FOR BUTTERFIELD EAST UNIT 3 SUBDIVISION, LOT 5



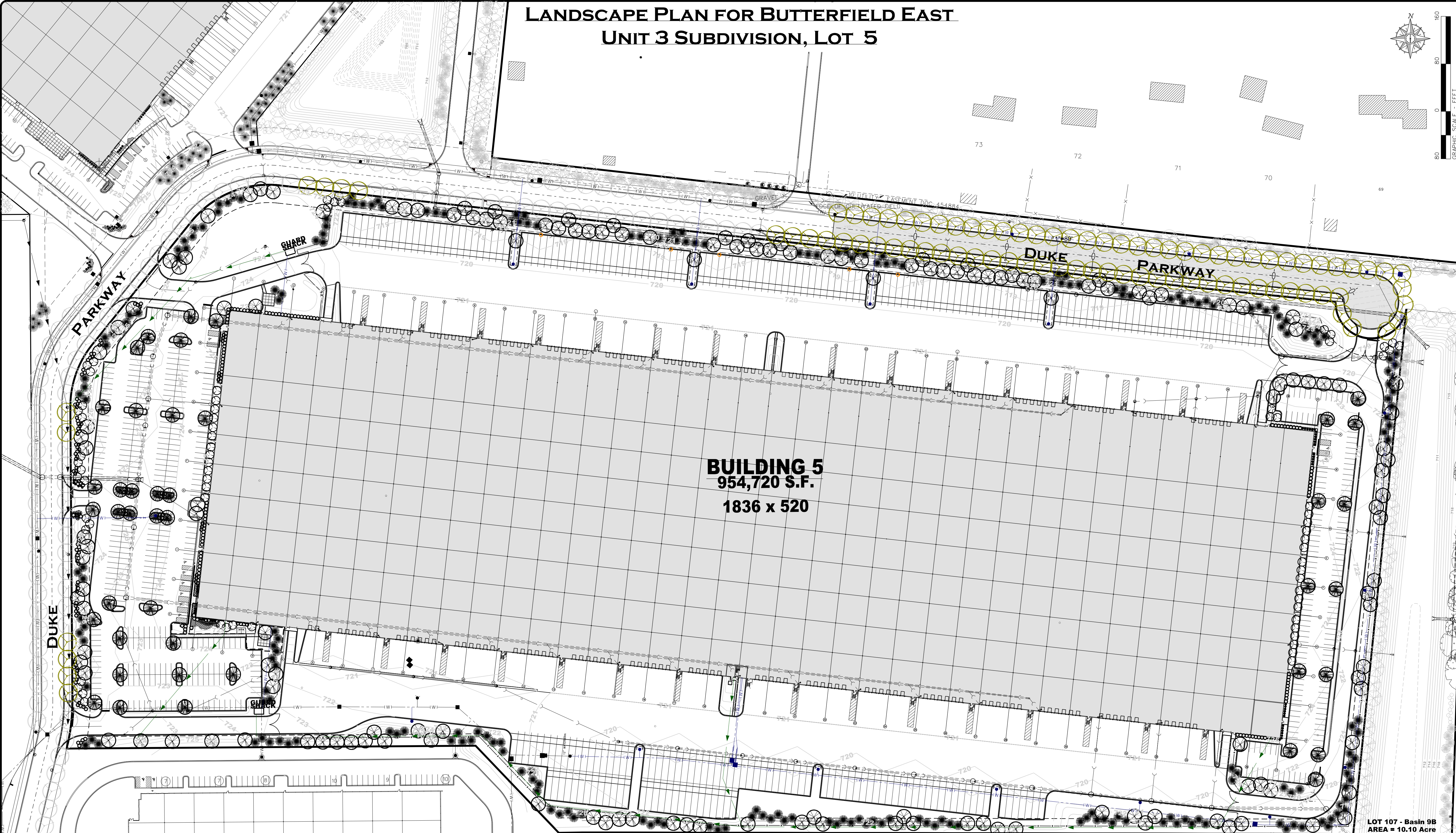
**Duke REALTY**  
DUKE REALTY LIMITED PARTNERSHIP  
1301 West 22nd Street, Suite 800  
Oak Brook, IL 60523  
847.232.5400 • 847.232.5691 (fx)

Landscape Architect:  
**WEBSTER, McGRATH & AHLBERG LTD.**  
**WMA**  
LAND SURVEYING - CIVIL ENGINEERING - LANDSCAPE ARCHITECTURE  
*Over 100 Years of Service to Clients*  
207 South Naperville Road, Wheeling, Illinois 60157  
(630)668-7603 Fax: (630)682-1760 Email: wma@wmaill.com  
Design Firm License No. 134-031011 41516

Professional Seal

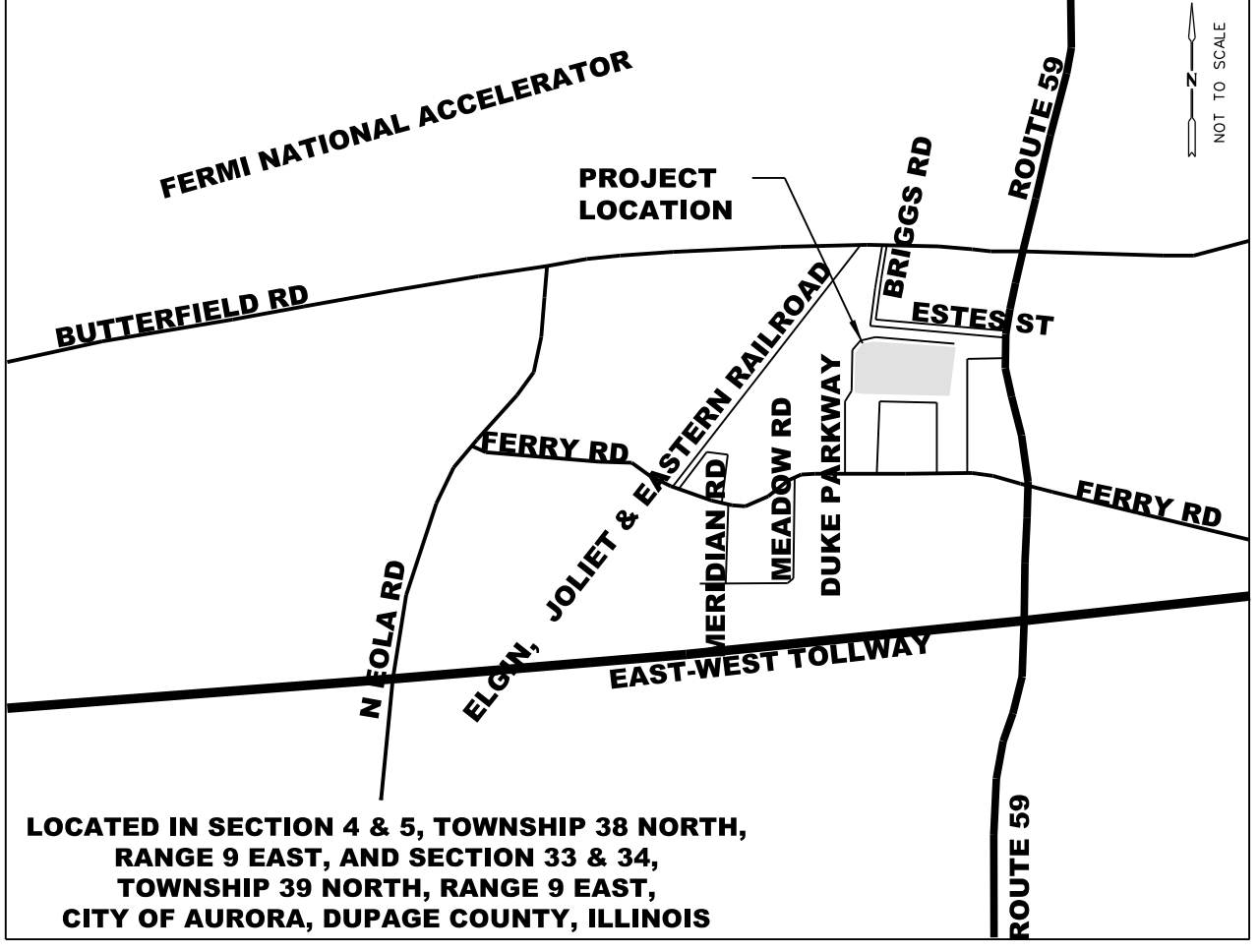
BUTTERFIELD EAST  
UNIT 3, LOT 5  
DUKE PARKWAY  
AURORA, IL

LANDSCAPE PLAN - OVERALL



**BUILDING 5**  
954,720 S.F.  
1836 x 520

LOT 107 - Basin 9B  
AREA = 10.10 Acre  
STORMWATER  
MANAGEMENT BASIN



LOCATION MAP

Landscape Data Table: Planting Material Key

Canopy Tree	1	294	294
Evergreen Tree	3	233	78
Ornamental Tree	3	70	23
Deciduous Shrub	20	86	3
Evergreen Shrub	20	211	12
<b>Total:</b>		<b>886</b>	<b>409</b>

Landscape Data Table: CTEs Provided

CTE Value	Count Provided	Total CTEs Provided
1	294	294
3	233	78
3	70	23
20	86	3
20	211	12
<b>Total:</b>	<b>886</b>	<b>409</b>

- Material Legend**
- Parkway Tree
  - Canopy Tree
  - Evergreen Tree
  - Ornamental Tree
  - Deciduous Shrub
  - Evergreen Shrub
  - Perennials
  - Ornamental Grass

- FENCE LEGEND**
- 10' ORNAMENTAL IRON SECURITY FENCE
  - 10' BLACK VINYL CHAIN LINK FENCE

- COA Planting Requirement Notes:**
- Variance requested for foundation plantings adjacent to south dock wall.
  - Foundation plantings on the north and west foundation wall are relocated to the north and west Perimeter Yard.
  - See L-400 for Plant Material Data Tables
- Notes:**
- Turf Seeding shall be IDOT Class 1 seed mix with Erosion Control Blanket. See Erosion Control Plan.
  - See Civil Plans for Fence Details.

ISSUANCES

#	Description	Date
1	COA PDD Review	03/25/16

DRAWING INFORMATION

Scale:  
Date: 03/07/2016  
Checked By: BMB  
Drawn By: BMB  
Duke Realty Job #: \_\_\_\_\_  
A/E Job #: 41516

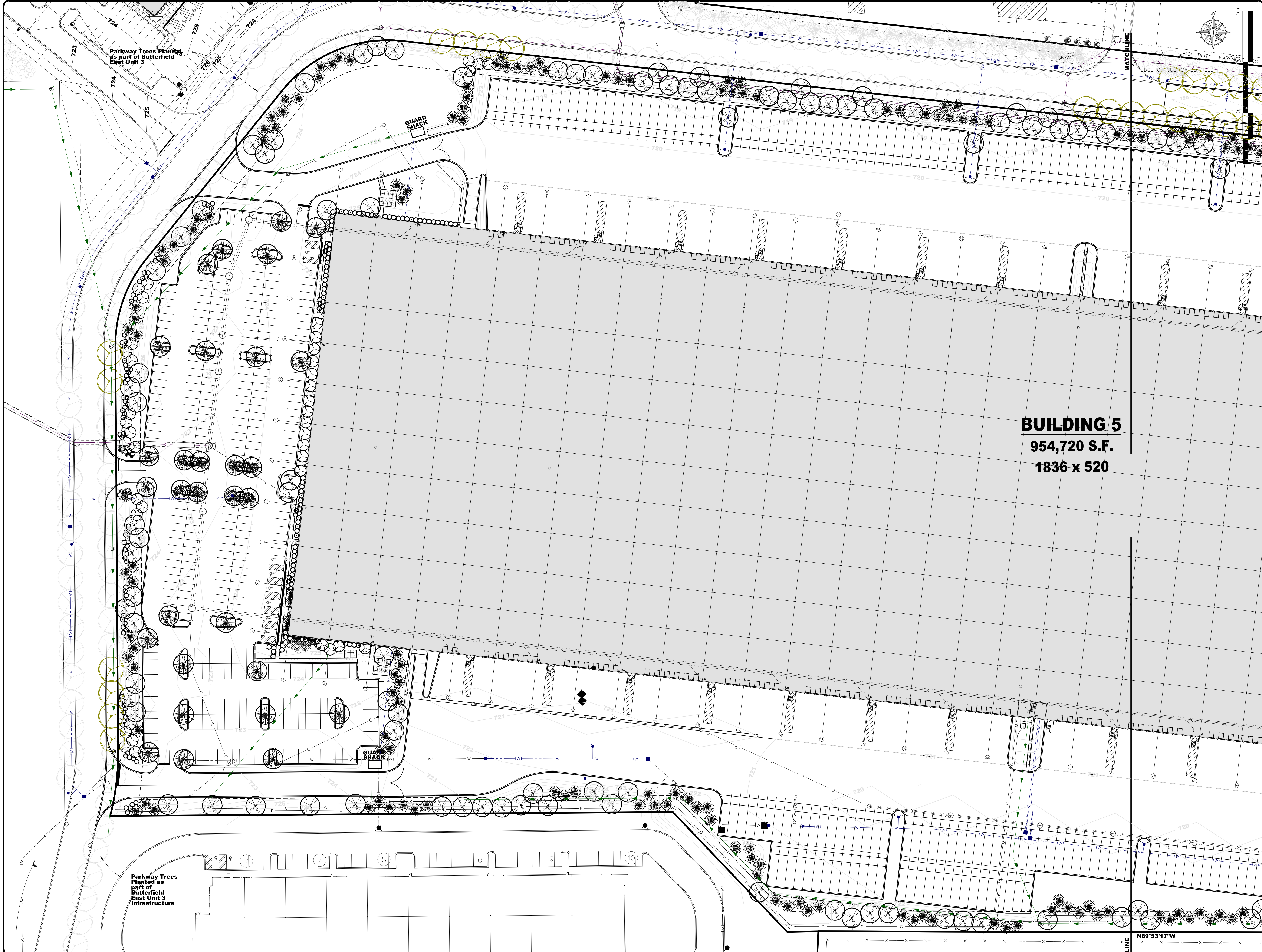
DRAWING / SHEET TITLE

**LANDSCAPE PLAN  
OVERALL**

SHEET NUMBER

**L-200**

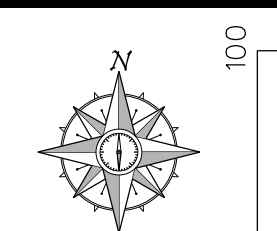
DATE: 3/24/2016  
FILE: E:\ACTIVE-PROJECTS\1516-333609-DUP\ENGR-BB\FINAL ENGINEERING PLANS\PHASE 3\Lot 5\1516 Landscape - Lot 5.dgn  
MODEL: Landscape Plan



Parkway Trees Planted as part of Butterfield East Unit 3

Parkway Trees Planted as part of Butterfield East Unit 3 Infrastructure

**BUILDING 5**  
 954,720 S.F.  
 1836 x 520



**Duke REALTY**  
 DUKE REALTY LIMITED PARTNERSHIP  
 1301 West 22nd Street, Suite 800  
 Oak Brook, IL 60523  
 847.232.5400 • 847.232.5691 (tx)

Landscape Architect:  
**WEBSTER, McGRATH & AHLBERG LTD.**  
**WMA**  
 LAND SURVEYING • CIVIL ENGINEERING • LANDSCAPE ARCHITECTURE  
*Over 100 Years of Service to Clients*  
 207 South Naperville Road, Wheeling, Illinois 60157  
 (830)668-7603 Fax: (830)682-1760 Email: wma@wmaill.com  
 Design Firm License No. 134-03101 41516

Professional Seal

**BUTTERFIELD EAST**  
**UNIT 3, LOT 5**  
**DUKE PARKWAY**  
**AURORA, IL**

**LANDSCAPE PLAN - WEST**

ISSUANCES

#	Description	Date
1	COA PDD Review	03/25/16

DRAWING INFORMATION

Scale: 1"=50'  
 Date: 03/07/2016  
 Checked By: BMB  
 Drawn By: BMB  
 Duke Realty Job #: \_\_\_\_\_  
 A/E Job #: 41516

DRAWING / SHEET TITLE

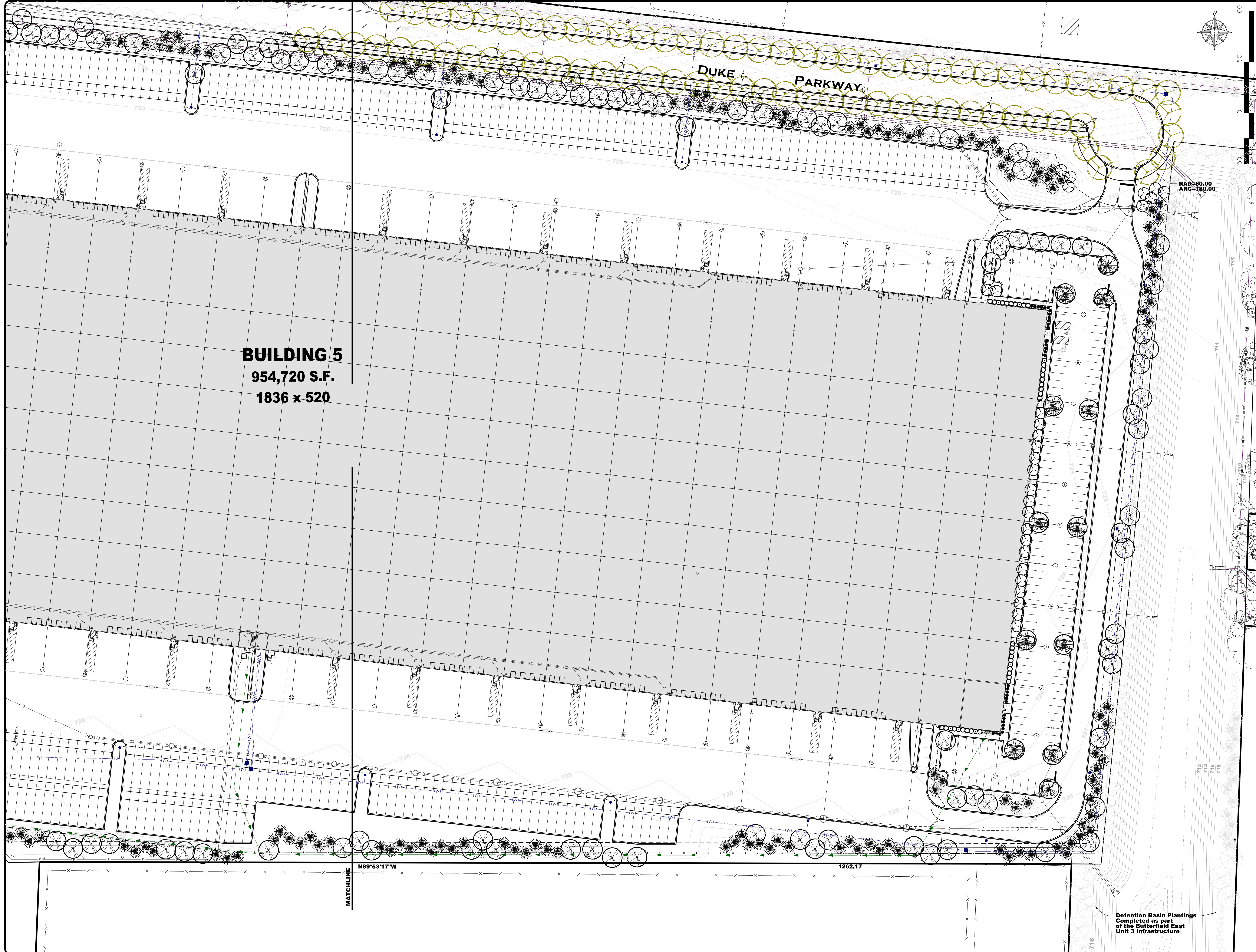
**LANDSCAPE PLAN - WEST**

SHEET NUMBER

**L-201**

DATE: 3/24/2016  
 FILE: E:\ACTIVE-PROJECTS\1516-333099-04\page\ENGR-88\FINAL ENGINEERING PLANS\PHASE 3\Lot 5\1516 Landscape - L.dgn  
 MODEL: Landscape Plan - West

DATE: 3/24/2016  
 FILE: E:\ACTIVE-PROJECTS\1516-333699-01\ENGR-88\FINAL ENGINEERING PLANS\PHASE 3\Lot 5\1516 Landscape - 1 Lot 5.dgn  
 MODEL: Landscape Plan - East



**BUILDING 5**  
 954,720 S.F.  
 1836 x 520

**Duke REALTY**  
 DUKE REALTY LIMITED PARTNERSHIP  
 1301 West 22nd Street, Suite 800  
 Oak Brook, IL 60523  
 847.232.5400 • 847.232.5691 (fx)

Landscape Architect:  
**WEBSTER, McGRATH & AHLBERG LTD.**  
**WMA**  
 LAND SURVEYING • CIVIL ENGINEERING • LANDSCAPE ARCHITECTURE  
*Over 100 Years of Service to Clients*  
 207 South Naperville Road, Wheeling, IL 60157  
 (630)668-7603 Fax: (630)682-1760 Email: wma@wmaill.com  
 Design Firm License No. 134-020101 41516

Professional Seal

**BUTTERFIELD EAST**  
 UNIT 3, LOT 5  
 DUKE PARKWAY  
 AURORA, IL

**LANDSCAPE PLAN - EAST**

**ISSUANCES**

#	Description	Date
1	COA PDD Review	03/25/16

**DRAWING INFORMATION**

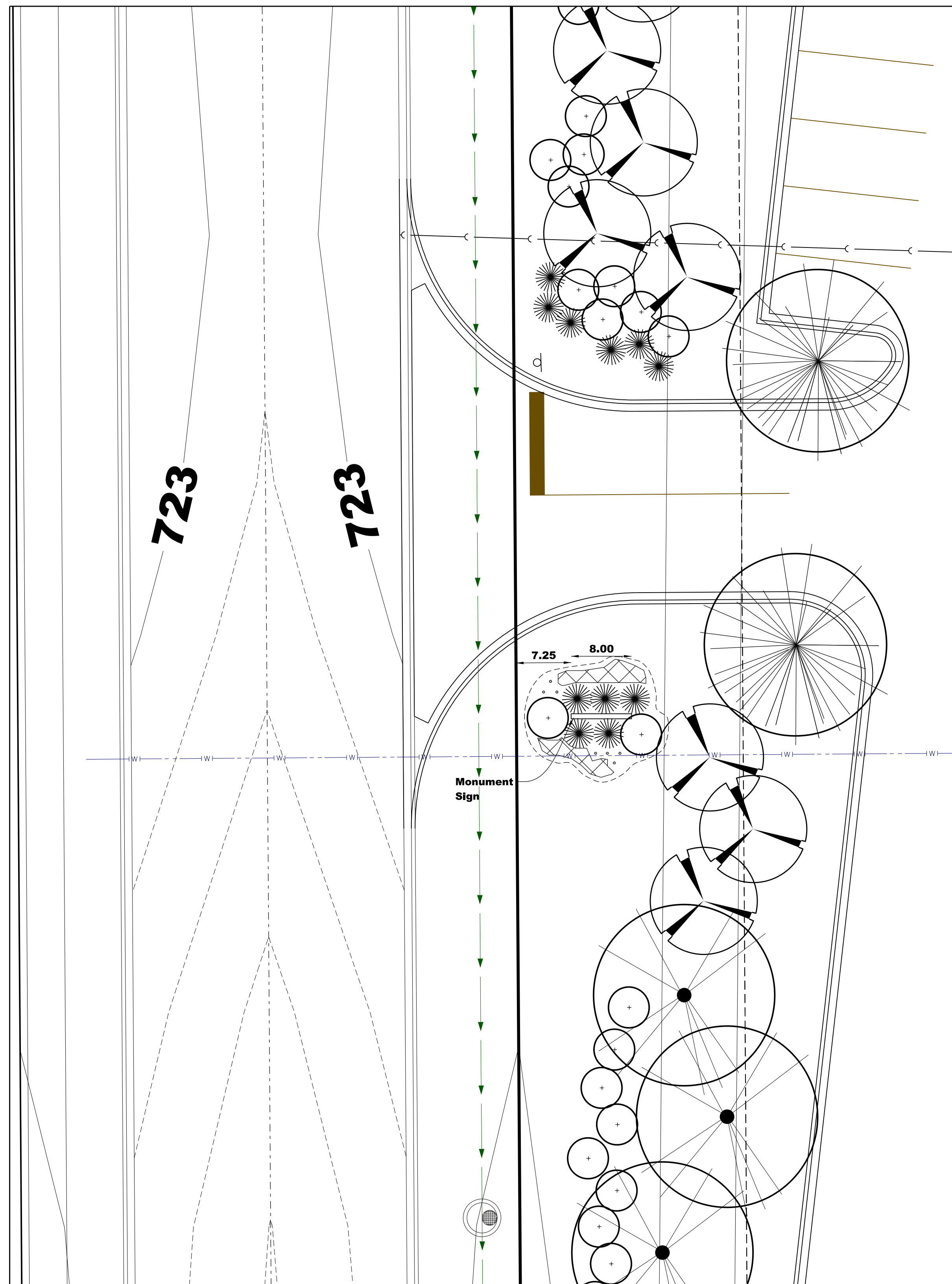
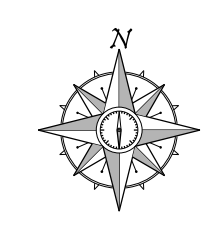
Scale: 1"=50'  
 Date: 03/07/2016  
 Checked By: BMB  
 Drawn By: BMB  
 Duke Realty Job #: \_\_\_\_\_  
 A/E Job #: 41516

**DRAWING / SHEET TITLE**

**LANDSCAPE PLAN - EAST**

SHEET NUMBER

**L-202**



MONUMENT SIGN DETAIL PLAN



SW ENTRANCE DETAIL PLAN

**Duke REALTY**  
 DUKE REALTY LIMITED PARTNERSHIP  
 1301 West 22nd Street, Suite 800  
 Oak Brook, IL 60523  
 847.232.5400 • 847.232.5691 (tx)

Landscape Architect:  
**WEBSTER, McGRATH & AHLBERG LTD.**  
**WMA**  
 LAND SURVEYING - CIVIL ENGINEERING - LANDSCAPE ARCHITECTURE  
*Over 100 Years of Service to Clients*  
 207 South Naperville Road, Wheaton, Illinois 60157  
 (630)668-7603 Fax: (630)682-1760 Email: wma@wmaill.com  
 Design Firm License No. 135-021011 41516

Professional Seal

**BUTTERFIELD EAST**  
**UNIT 3, LOT 5**  
**DUKE PARKWAY**  
**AURORA, IL**

LANDSCAPE ENTRANCE DETAIL

ISSUANCES		
#	Description	Date
1	COA PDD Review	03/25/16

**DRAWING INFORMATION**  
 Scale: 1"=10'  
 Date: 03/07/2016  
 Checked By: BMB  
 Drawn By: BMB  
 Duke Realty Job #: -----  
 A/E Job #: 41516

**DRAWING / SHEET TITLE**  
**LANDSCAPE PLAN @ ENTRANCES**  
 SHEET NUMBER

**L-203**

DATE: 3/24/2016  
 FILE: E:\ACTIVE-PROJECTS\1516-333909-DUP\ENGR-88\FINAL ENGINEERING PLANS\PHASE 3\Lot 5\1516 Landscape - Lot 5.dgn  
 MODEL: Landscape Entrance Detail Plan

DATE: 3/24/2016  
 FILE: E:\ACTIVE-PROJECTS\1516-333099-DUP\ENGR-88\FINAL ENGINEERING PLANS\PHASE 3\Lot 04 04 1616 Landscape - Lot 5.dgn  
 MODEL: Landscape Plan - Details

Landscape Implementation Data Table: Plant List by Category							
	QTY	Percent	SYM	BOTANICAL NAME (Family / Genus / Species)	COMMON NAME	SIZE	COMMENTS
<b>Canopy Trees</b>	21	11%		Sapindaceae Acer freemanii 'Autumn Blaze'	Autumn Blaze Maple	2.5	
	1	1%		Sapindaceae Acer freemanii 'Marmo'	Marmo Maple	2.5	
	11	6%		Sapindaceae Acer miyabei 'Morton'	Miyabe Maple	2.5	
	17	9%		Sapindaceae Acer saccharum 'Crescendo'	Crescendo Sugar Maple	2.5	
	6	3%		Bignoniaceae Catalpa speciosa	Catalpa	2.5	
	13	7%		Cannabaceae Celtis occidentalis	Hackberry	2.5	
	3	2%		Fabaceae Gleditsia triacanthos inermis 'Moraine'	Morain Honeylocust	2.5	
	29	15%		Fabaceae Gleditsia triacanthos inermis 'Shademas'	Shademaster Honeylocust	2.5	
	10	5%		Fabaceae Gymnocladus dioica	Kentucky coffeetree	2.5	
	4	2%		Altingiaceae Liquidambar styraciflua	Sweetgum	2.5	
	12	6%		Platanaceae Platanus acerfolia 'Bloodgood'	Bloodgood London Planetree	2.5	
	6	3%		Rosaceae Pyrus calleryana 'Autumn Blaze'	Autumn Blaze Pear	2.5	
	3	2%		Fagaceae Quercus imbricaria	Shingle Oak	2.5	
	8	4%		Fagaceae Quercus rubra	Northern Red Oak	2.5	
	15	8%		Tiliaceae Tilia americana 'Redmond'	Redmond Linden	2.5	
	10	5%		Tiliaceae Tilia cordata 'Greenspire'	Greenspire Linden	2.5	
	5	3%		Tiliaceae Tilia tomentosa	Silver Linden	2.5	
	7	4%		Ulmaceae Ulmus 'Accolade'	Accolade Elm	2.5	
	15	8%		Ulmaceae Ulmus 'Frontier'	Frontier Elm	2.5	
<b>Total:</b>	<b>196</b>	<b>100%</b>					
<b>Evergreen Trees</b>	19	8%		Pinaceae Abies concolor	White Fir	6'	
	12	5%		Cupressaceae Juniperus virginiana 'Canaerti'	Canaerti Juniper	6'	
	28	12%		Pinaceae Picea abies	Norway Spruce	6'	
	45	19%		Pinaceae Picea glauca 'Densata'	Black Hills Spruce	6'	
	26	11%		Pinaceae Picea pungens 'Colorado Blue'	Colorado Blue Spruce	6'	
	45	19%		Pinaceae Pinus nigra	Austrian Pine	6'	
	32	14%		Pinaceae Pinus strobus	Eastern White Pine	6'	
	26	11%		Pinaceae Pinus sylvestris	Scotch Pine	6'	
	0	0%					
<b>Total:</b>	<b>233</b>	<b>100%</b>					
<b>Understory Trees</b>	5	7%		Rosaceae Amelanchier grandiflora 'Autumn Brillian'	Autumn Brilliance Serviceberry	6'	
	21	30%		Betulaceae Betula nigra 'Heritage'	Heritage River Birch	10' multi	
	3	4%		Betulaceae Betula populifolia 'Whitespire'	Japanese Whitespire Birch	10' multi	
	18	26%		Cornaceae Cornus alternifolia	Pagoda Dogwood	8'	
	6	9%		Rosaceae Malus 'Prairiefire'	Prairiefire Crabapple	2.5"	
	4	6%		Rosaceae Pyrus calleryana	Chanticleer Pear	2.5"	
	13	19%		Oleaceae Syringa pekinensis 'Zhang Zhming'	Peking Lilac	8' multi	
<b>Total:</b>	<b>70</b>	<b>100%</b>					
<b>Deciduous Shrubs</b>	10	4%		Rosaceae Aronia melanocarpa	Black Chokeberry	30"	
	28	12%		Cornaceae Cornus sericea 'Cardinal'	Cardinal Dogwood	30"	
	6	3%		Celastraceae Euonymus alatus 'Compactus'	Dwarf Winged Euonymus	30"	
	6	3%		Hamamelidaceae Hamamelis vernalis	Vernal Witchazel	30"	
	6	3%		Hydrangeaceae Hydrangea arborescens 'Annabelle'	Annabelle Hydrangea	30"	
	10	4%		Hydrangeaceae Hydrangea paniculata	Tardiva Hydrangea	36"	
	19	8%		Myricaceae Myrica pennsylvanica	Bayberry	36"	
	23	10%		Anacardiaceae Rhus aromatica 'Gro Low'	Gro Low Sumac	30"	
	37	16%		Anacardiaceae Rhus aromatica	Fragrant Sumac	36"	
	28	12%		Anacardiaceae Rhus typhina 'Tiger Eye'	Tiger Eye Sumac	36"	
	20	9%		Rosaceae Spirea vanhouttei 'Renaissance'	Renaissance Spirea	36"	
	4	2%		Oleaceae Syringa patula 'Miss Kim'	Miss Kim Lilac	36"	
	34	15%		Adoxaceae Viburnum dentatum 'Chicago Luster'	Chicago Luster Viburnum	36"	
	0	0%					
<b>Total:</b>	<b>231</b>	<b>100%</b>					
<b>Evergreen Shrubs</b>	6	10%		Cupressaceae Juniperus chinensis 'Sea Green'	Sea Green Juniper	30"	
	5	9%		Cupressaceae Juniperus horizontalis 'Sargent'	Sargent Juniper	30"	
	12	21%		Cupressaceae/Microbata decussata	Russian Cypress	30"	
	35	60%		Taxaceae Taxus media 'Dark Green Spreader'	Spreading Yew	30"	
<b>Total:</b>	<b>58</b>	<b>100%</b>					



DUKE REALTY LIMITED PARTNERSHIP  
 1301 West 22nd Street, Suite 800  
 Oak Brook, IL 60523  
 847.232.5400 • 847.232.5691 (fx)

Landscape Architect:

**WEBSTER, MCGRATH & AHLBERG LTD.**



LAND SURVEYING - CIVIL ENGINEERING - LANDSCAPE ARCHITECTURE

*Over 100 Years of Service to Clients*

207 South Naperville Road, Wheaton, Illinois 60187  
 (630)668-7603 Fax: (630)682-1760 Email: wma@wmaahb.com

Design Firm License No. 126-021011 41516

Professional Seal

BUTTERFIELD EAST

UNIT 3, LOT 5

DUKE PARKWAY  
 AURORA, IL

LANDSCAPE DETAILS

ISSUANCES


1 COA PDD Review 03/25/16

# Description Date

DRAWING INFORMATION

Scale: 1"=50'

Date: 03/07/2016

Checked By: BMB

Drawn By: BMB

Duke Realty Job #: -----

A/E Job #: 41516

DRAWING / SHEET TITLE

**LANDSCAPE  
 DETAILS**

SHEET NUMBER

**L-400**