

Lounge Area = 1280 sq.ft. @ 16 sq.ft. per person = 84 people
 Bar Area = 200 sq.ft. @ 200 sq.ft. per person = 1 people
 Illinois Plumbing Code Requirements for Restrooms
 based on 84 people, 42 male and 42 female:

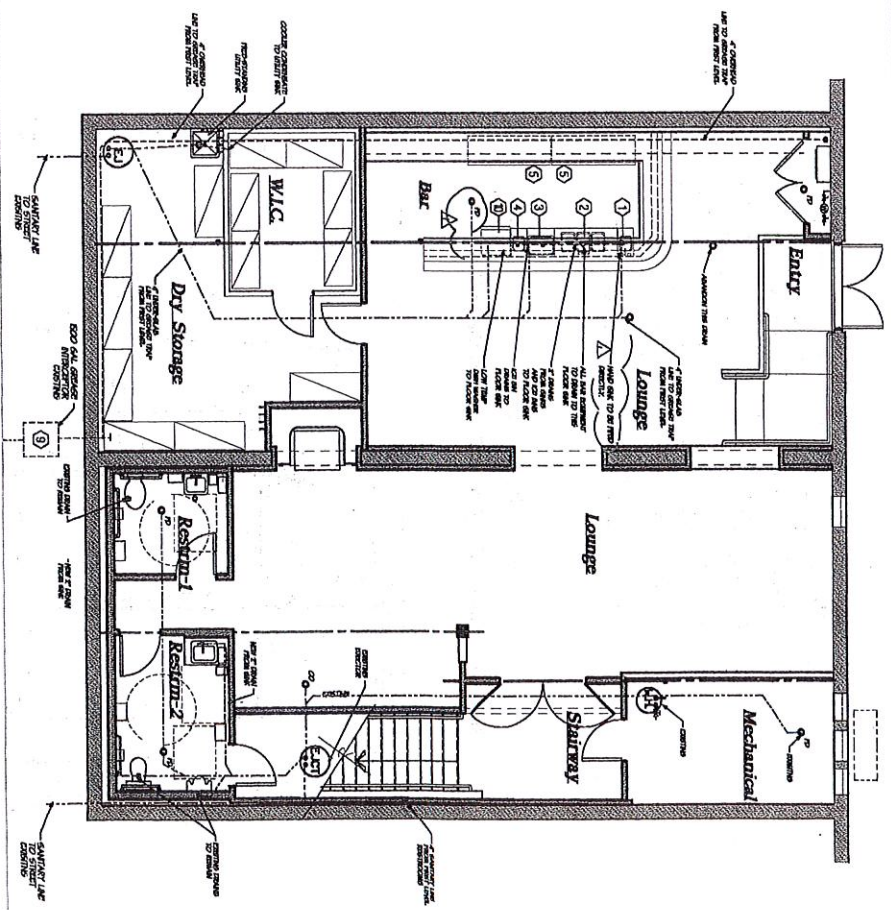
Male
 1- Water-Closet 1-100 people
 1- Urinal 1-150 people

Female
 1- Water Closet 1-50 people

| PLUMBING, HEATING, COOLING, AND VENTILATION | | | | | | | | | | | |
|---|--|--|--|--|--|--|--|--|--|--|--|
| 1. GENERAL NOTES | | | | | | | | | | | |
| 1. All work shall be in accordance with the Illinois Plumbing Code, the Illinois Mechanical Code, and the Illinois Electrical Code. | | | | | | | | | | | |
| 2. All work shall be in accordance with the Illinois Building Code, the Illinois Fire Code, and the Illinois Electrical Code. | | | | | | | | | | | |
| 3. All work shall be in accordance with the Illinois Health Code, the Illinois Fire Code, and the Illinois Electrical Code. | | | | | | | | | | | |
| 4. All work shall be in accordance with the Illinois Fire Code, the Illinois Health Code, and the Illinois Electrical Code. | | | | | | | | | | | |
| 5. All work shall be in accordance with the Illinois Fire Code, the Illinois Health Code, and the Illinois Electrical Code. | | | | | | | | | | | |
| 6. All work shall be in accordance with the Illinois Fire Code, the Illinois Health Code, and the Illinois Electrical Code. | | | | | | | | | | | |
| 7. All work shall be in accordance with the Illinois Fire Code, the Illinois Health Code, and the Illinois Electrical Code. | | | | | | | | | | | |
| 8. All work shall be in accordance with the Illinois Fire Code, the Illinois Health Code, and the Illinois Electrical Code. | | | | | | | | | | | |
| 9. All work shall be in accordance with the Illinois Fire Code, the Illinois Health Code, and the Illinois Electrical Code. | | | | | | | | | | | |
| 10. All work shall be in accordance with the Illinois Fire Code, the Illinois Health Code, and the Illinois Electrical Code. | | | | | | | | | | | |
| 11. All work shall be in accordance with the Illinois Fire Code, the Illinois Health Code, and the Illinois Electrical Code. | | | | | | | | | | | |
| 12. All work shall be in accordance with the Illinois Fire Code, the Illinois Health Code, and the Illinois Electrical Code. | | | | | | | | | | | |
| PLUMBING, HEATING, COOLING, AND VENTILATION | | | | | | | | | | | |
| 1. GENERAL NOTES | | | | | | | | | | | |
| 1. All work shall be in accordance with the Illinois Plumbing Code, the Illinois Mechanical Code, and the Illinois Electrical Code. | | | | | | | | | | | |
| 2. All work shall be in accordance with the Illinois Building Code, the Illinois Fire Code, and the Illinois Electrical Code. | | | | | | | | | | | |
| 3. All work shall be in accordance with the Illinois Health Code, the Illinois Fire Code, and the Illinois Electrical Code. | | | | | | | | | | | |
| 4. All work shall be in accordance with the Illinois Fire Code, the Illinois Health Code, and the Illinois Electrical Code. | | | | | | | | | | | |
| 5. All work shall be in accordance with the Illinois Fire Code, the Illinois Health Code, and the Illinois Electrical Code. | | | | | | | | | | | |
| 6. All work shall be in accordance with the Illinois Fire Code, the Illinois Health Code, and the Illinois Electrical Code. | | | | | | | | | | | |
| 7. All work shall be in accordance with the Illinois Fire Code, the Illinois Health Code, and the Illinois Electrical Code. | | | | | | | | | | | |
| 8. All work shall be in accordance with the Illinois Fire Code, the Illinois Health Code, and the Illinois Electrical Code. | | | | | | | | | | | |
| 9. All work shall be in accordance with the Illinois Fire Code, the Illinois Health Code, and the Illinois Electrical Code. | | | | | | | | | | | |
| 10. All work shall be in accordance with the Illinois Fire Code, the Illinois Health Code, and the Illinois Electrical Code. | | | | | | | | | | | |
| 11. All work shall be in accordance with the Illinois Fire Code, the Illinois Health Code, and the Illinois Electrical Code. | | | | | | | | | | | |
| 12. All work shall be in accordance with the Illinois Fire Code, the Illinois Health Code, and the Illinois Electrical Code. | | | | | | | | | | | |

For First Level

- PLUMBING:**
1. PROVIDE HOT WATER SUPPLY TO ALL WATER FIXTURES.
 2. PROVIDE COLD WATER SUPPLY TO ALL WATER FIXTURES.
 3. PROVIDE DRAINAGE AND VENTILATION FOR ALL WATER FIXTURES.
 4. PROVIDE GAS SUPPLY TO ALL WATER HEATING EQUIPMENT.
 5. PROVIDE GAS SUPPLY TO ALL WATER HEATING EQUIPMENT.
 6. PROVIDE GAS SUPPLY TO ALL WATER HEATING EQUIPMENT.
 7. PROVIDE GAS SUPPLY TO ALL WATER HEATING EQUIPMENT.
 8. PROVIDE GAS SUPPLY TO ALL WATER HEATING EQUIPMENT.
 9. PROVIDE GAS SUPPLY TO ALL WATER HEATING EQUIPMENT.
 10. PROVIDE GAS SUPPLY TO ALL WATER HEATING EQUIPMENT.
 11. PROVIDE GAS SUPPLY TO ALL WATER HEATING EQUIPMENT.
 12. PROVIDE GAS SUPPLY TO ALL WATER HEATING EQUIPMENT.



| No. | Date | Revis |
|-----|----------|-----------------------------------|
| 1 | 02/06/23 | FINAL FOR PERMIT AND CONSTRUCTION |
| 2 | 02/06/23 | REVISED |
| 3 | 02/06/23 | REVISED |
| 4 | 02/06/23 | REVISED |
| 5 | 02/06/23 | FINAL FOR PERMIT AND CONSTRUCTION |