

ISSUANCE	
NO	DESCRIPTION
08/09/2024	ISSUE FOR BID

AURORA FIRE STATION NO. 09
 CITY OF AURORA
 330 EOLA ROAD, AURORA, ILLINOIS 60502

ARCHITECTURAL SITE PLAN

SHEET NO.
A0.1

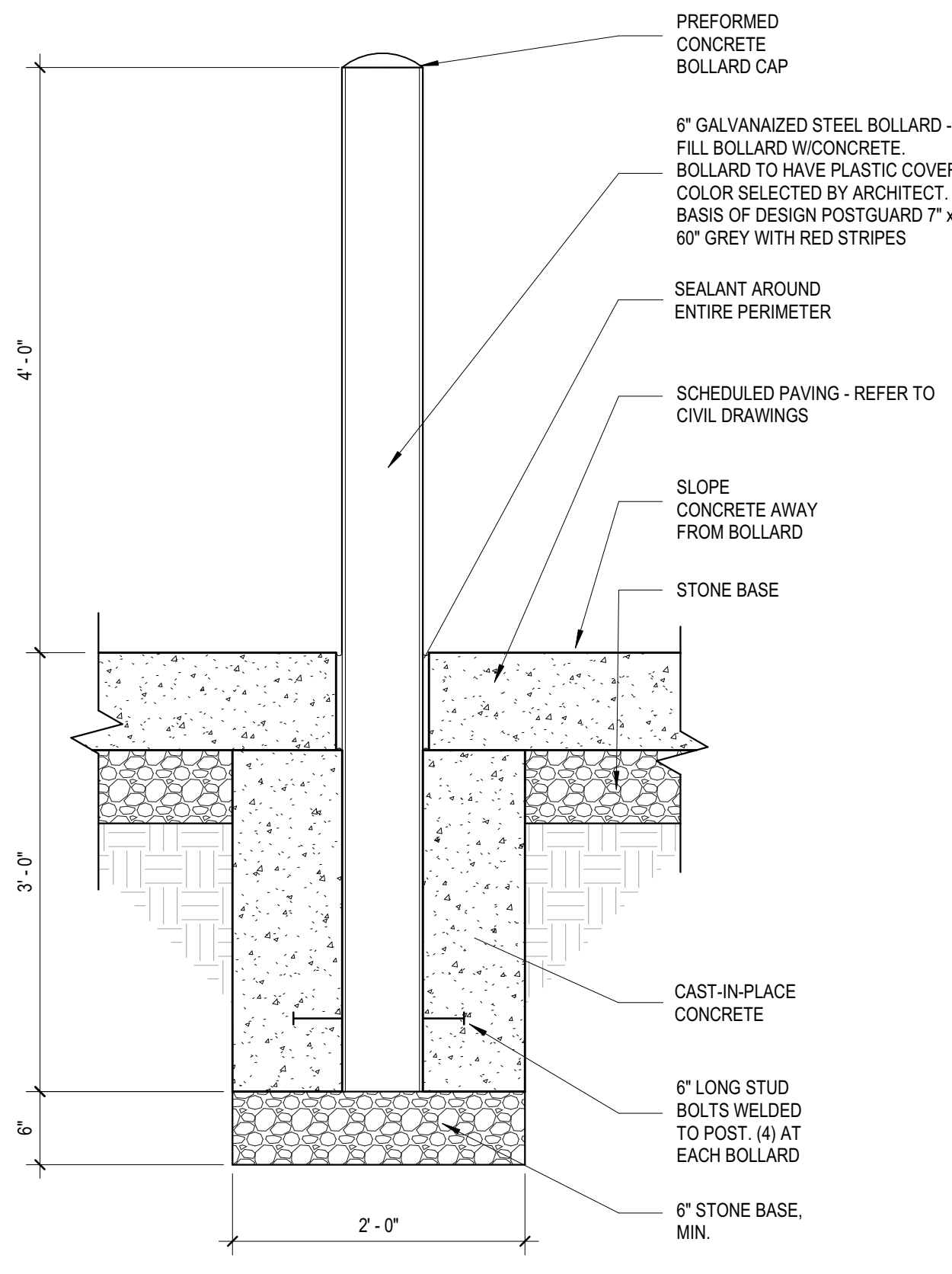
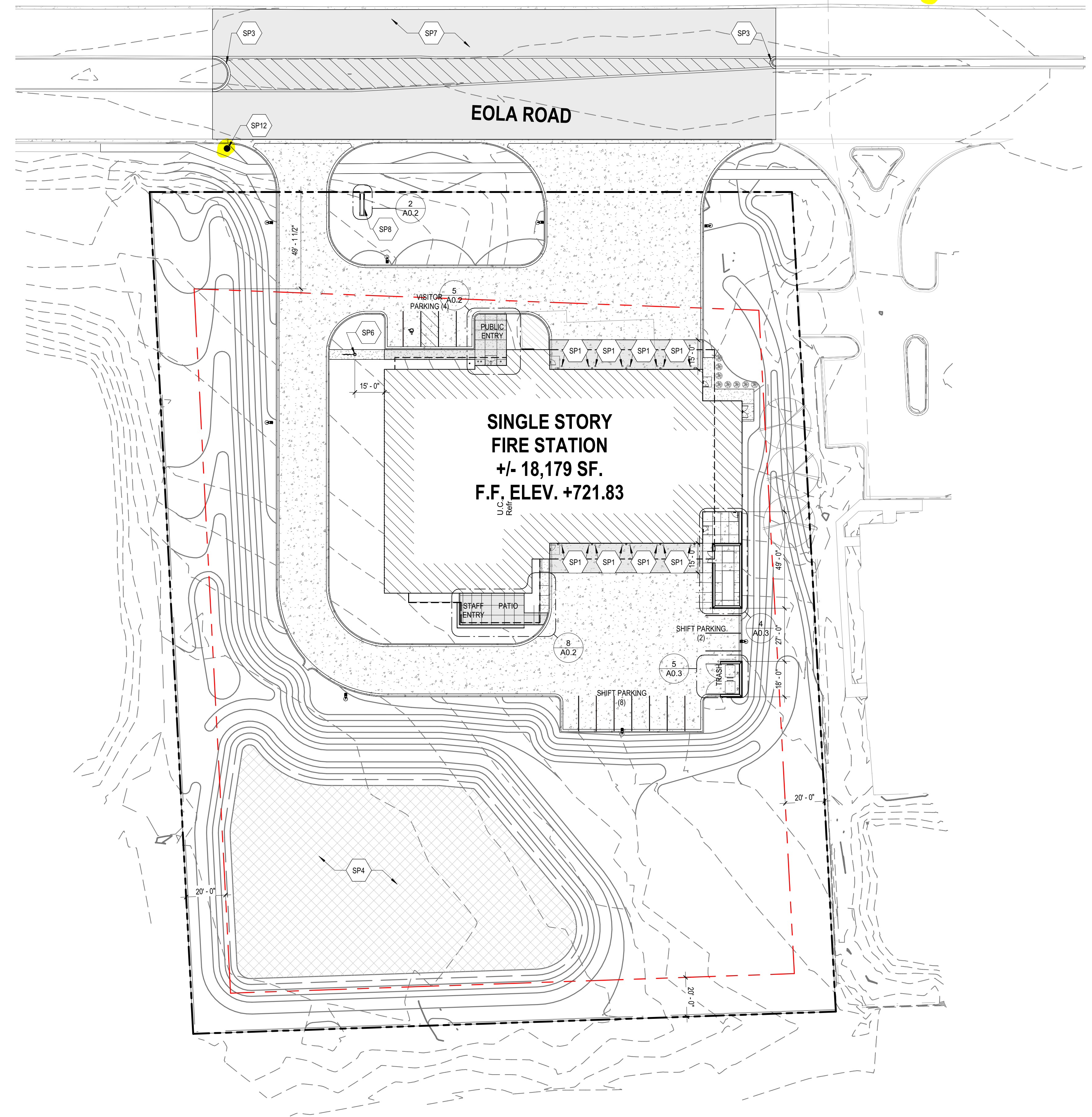
GENERAL SITE PLAN NOTES

- REFER TO G-SERIES SHEETS FOR TYPICAL ABBREVIATIONS, SYMBOLS & TAGS.
- REFER TO CIVIL AND LANDSCAPE DRAWINGS FOR ADDITIONAL INFORMATION.
- EXPOSED FERROUS METALS ARE TO BE PAINTED, U.N.O.
- PROVIDE GALVANIC SEPARATION BETWEEN DIFFERENT METAL TYPES, TYP.
- NOTE ANY DISCREPANCIES BETWEEN CIVIL AND ARCHITECTURAL DRAWINGS WITH REGARDS TO SCORING PATTERNS AND CONTROL JOINTS IN PAVING AND CONCRETE FLATWORK AND NOTIFY ARCHITECT PRIOR TO PROCEEDING.
- COORDINATE SITE LIGHTING WITH ELECTRICAL DRAWINGS.
- SEE LANDSCAPE DRAWINGS FOR TREE LOCATIONS.
- FOR DETAILED CIVIL NOTES, REFER TO CIVIL DRAWINGS.

SITE PLAN LEGEND

- PROPERTY LINE
- SETBACK LINE
- EASEMENT LINE
- ROOF OVERHANG LINE
- FENCE LINE
- INDICATES CONCRETE PAVEMENT, REFER TO CIVIL SERIES.
- INDICATES BUILDING FOOTPRINT
- INDICATES CONCRETE SIDEWALK, REFER TO CIVIL SERIES.
- INDICATES SNOW MELT SYSTEM, REFER TO CIVIL AND MECHANICAL SERIES.
- INDICATES NEW ASPHALT PAVEMENT, REFER TO CIVIL SERIES.

SITE PLAN KEYED NOTES	
TAG	DESCRIPTION
SP1	PIPE BOLLARD, SEE DETAIL.
SP2	GENERATOR, SEE ELECTRICAL SHEETS FOR ADDITIONAL INFORMATION.
SP3	CURB CUT, SEE CIVIL SHEETS FOR ADDITIONAL INFORMATION.
SP4	DETENTION, SEE CIVIL AND LANDSCAPE SHEETS FOR ADDITIONAL INFORMATION.
SP5	TRANSFORMER, SEE ELECTRICAL SERIES.
SP6	NEW 30' FLAG POLE BY CONTRACTOR.
SP7	NEW ASPHALT PAVEMENT - REFER TO CIVIL SERIES.
SP8	MONUMENT SIGN, SEE DETAILS.
SP9	CUT CONCRETE TO ACCOMMODATE KEEPER ROD.
SP10	TRANSFORMER AND PAD, CONTRACTOR TO COORDINATE WITH UTILITY COMPANY, SEE CIVIL AND ELECTRICAL SERIES.
SP11	GENERATOR AND 10" THICK ISOLATED GENERATOR PAD - COORDINATE ISOLATED PAD DIMENSIONS WITH FINAL MANUFACTURER. SEE ELECTRICAL SERIES.
SP12	TRAFFIC PREEMPTION SENSOR ON POLE WITH SOLAR PANEL, CONTRACTOR TO COORDINATE SYSTEM WITH TRAFFIC PREEMPTION SYSTEM SUPPLIER. COORDINATE FINAL LOCATION WITH THE CITY AND FIRE DEPARTMENT. SEE SHEET A0.2 FOR ADDITIONAL INFORMATION.
SP13	PROVIDE OPENING IN FOUNDATION WALL 2' IN LENGTH DOWN TO TOP OF GRADE TO ALLOW FOR SITE DRAINAGE. SEE CIVIL SERIES FOR ADDITIONAL INFORMATION.



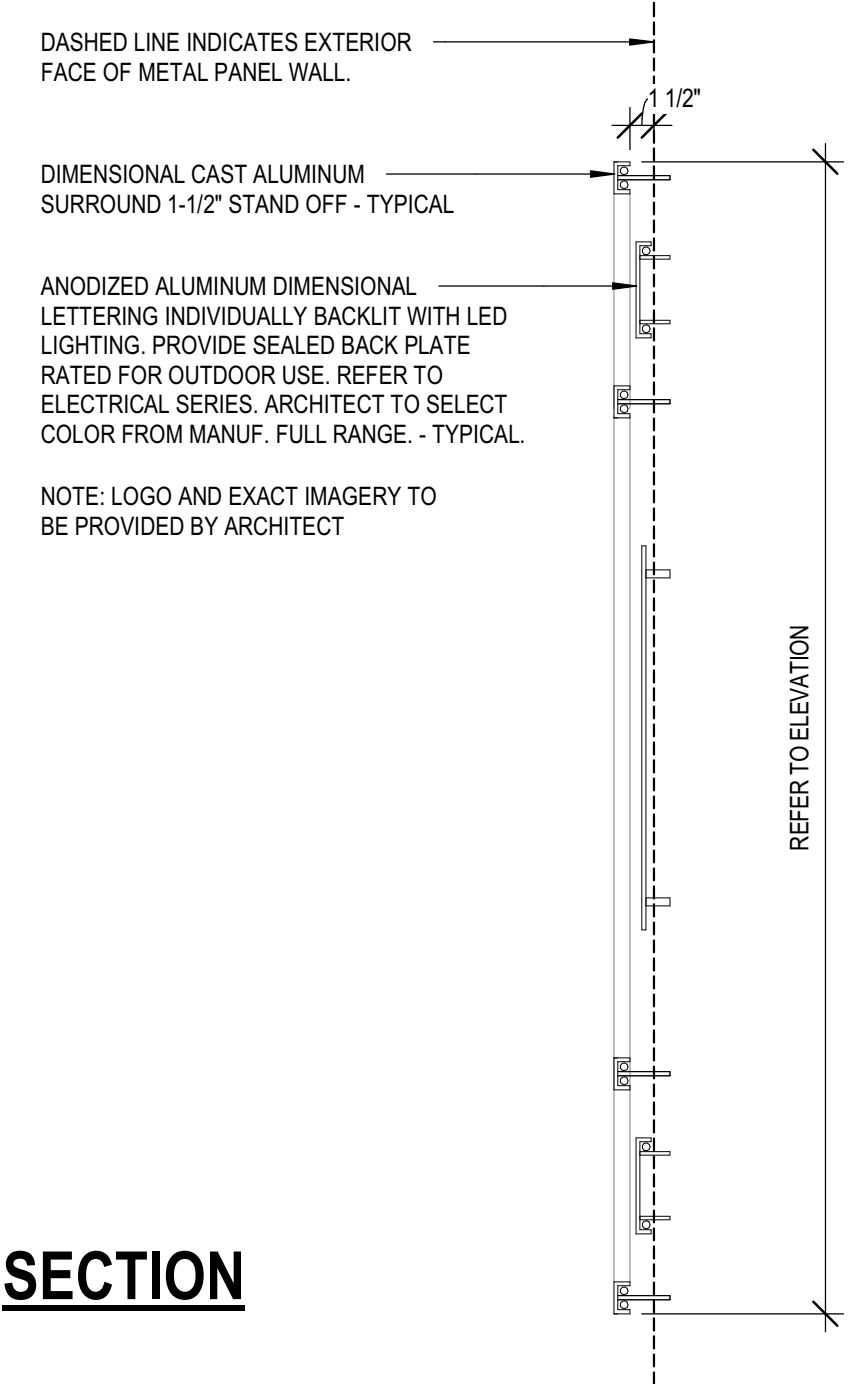
1 | PIPE BOLLARD DETAIL
 1/2" = 1'-0"

3 | PIPE BOLLARD PLAN
 3/4" = 1'-0"

2 | ARCHITECTURAL SITE PLAN
 1" = 30'-0"

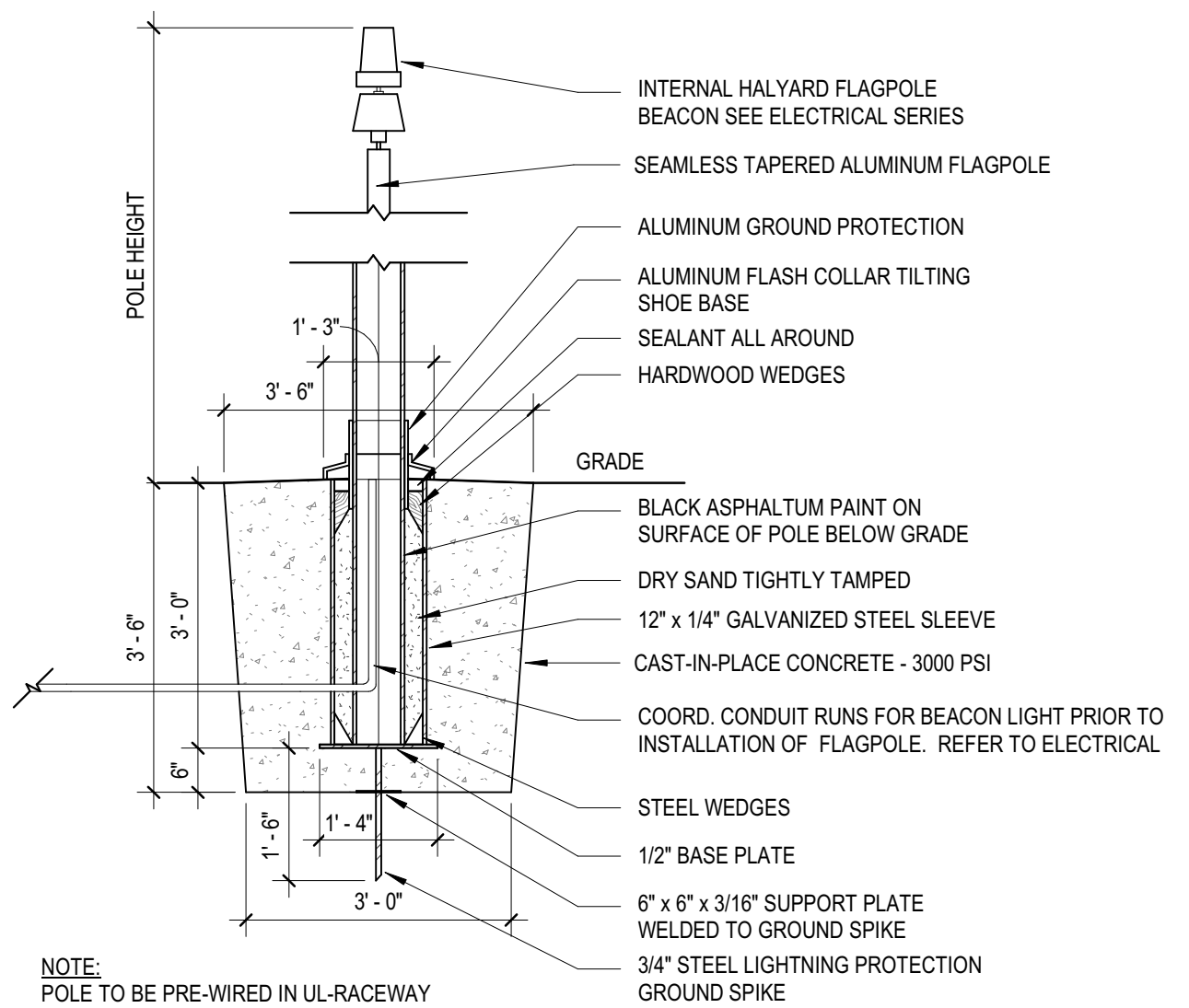


ELEVATION



SECTION

5 | ENLARGED ELEVATION - EXTERIOR SIGNAGE
 1" = 1'-0"

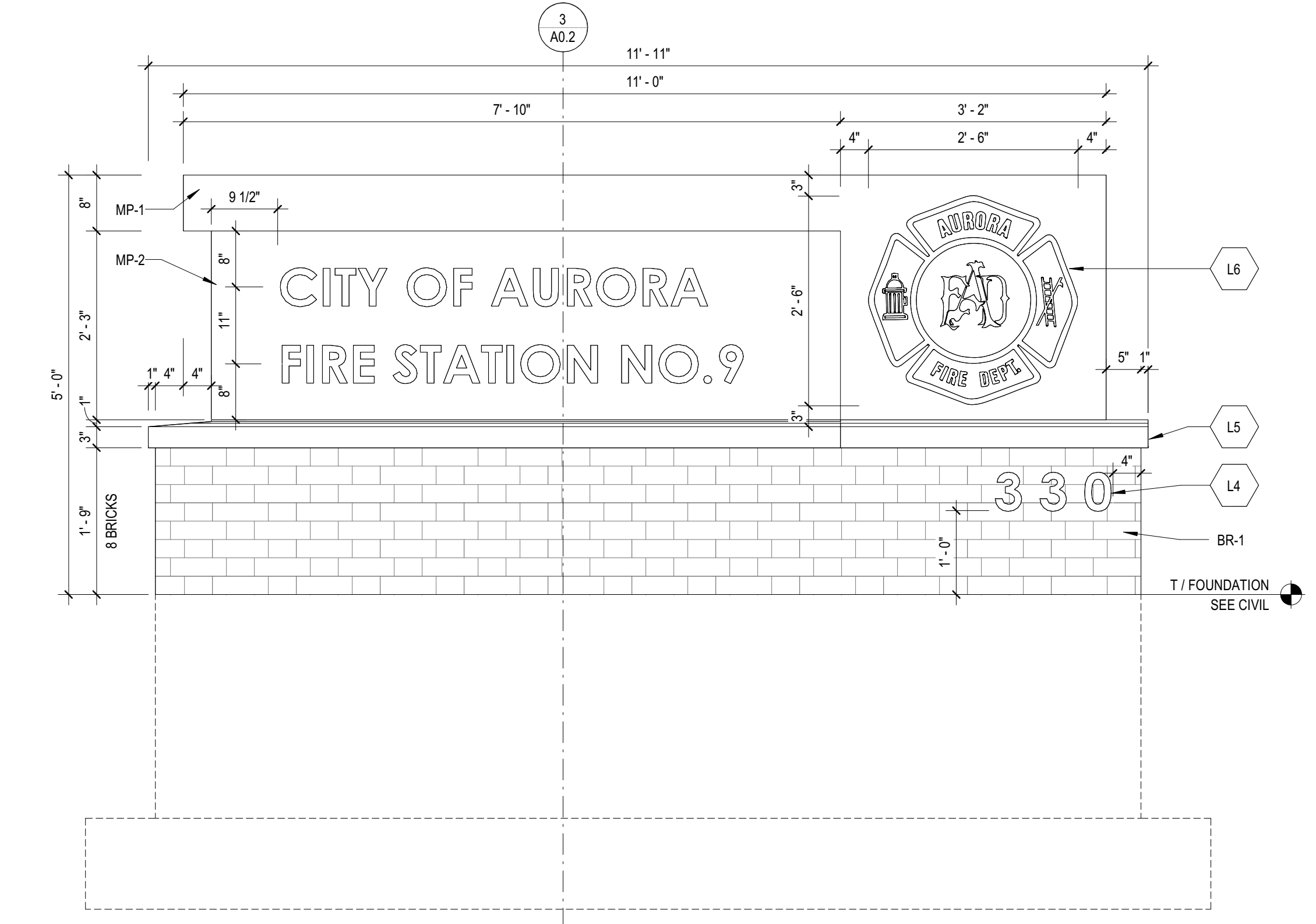


4 | FLAG POLE DETAIL
 1/2" = 1'-0"

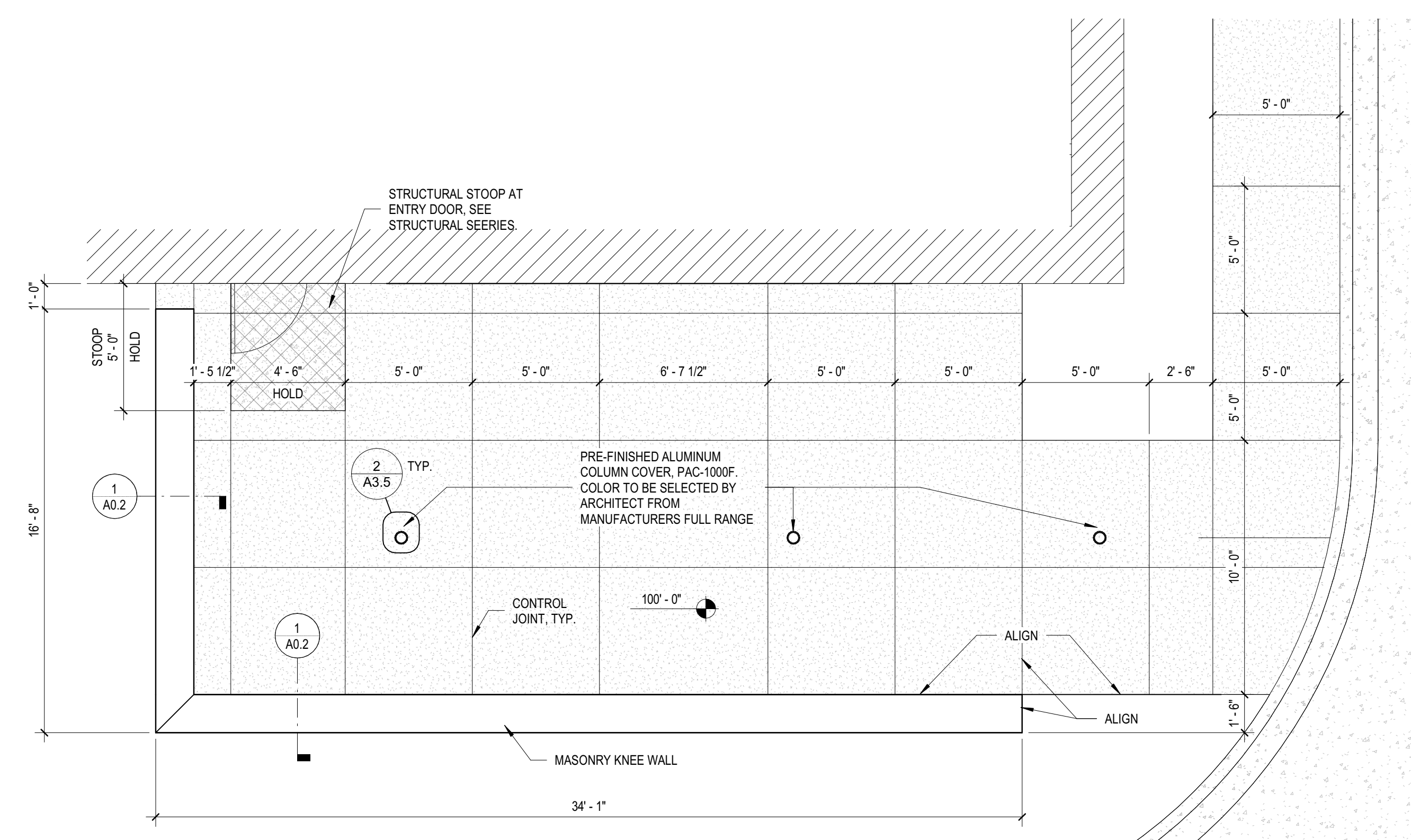
ISSUANCE table with columns NO, DATE, DESCRIPTION

ISSUANCE table with columns NO, DATE, DESCRIPTION

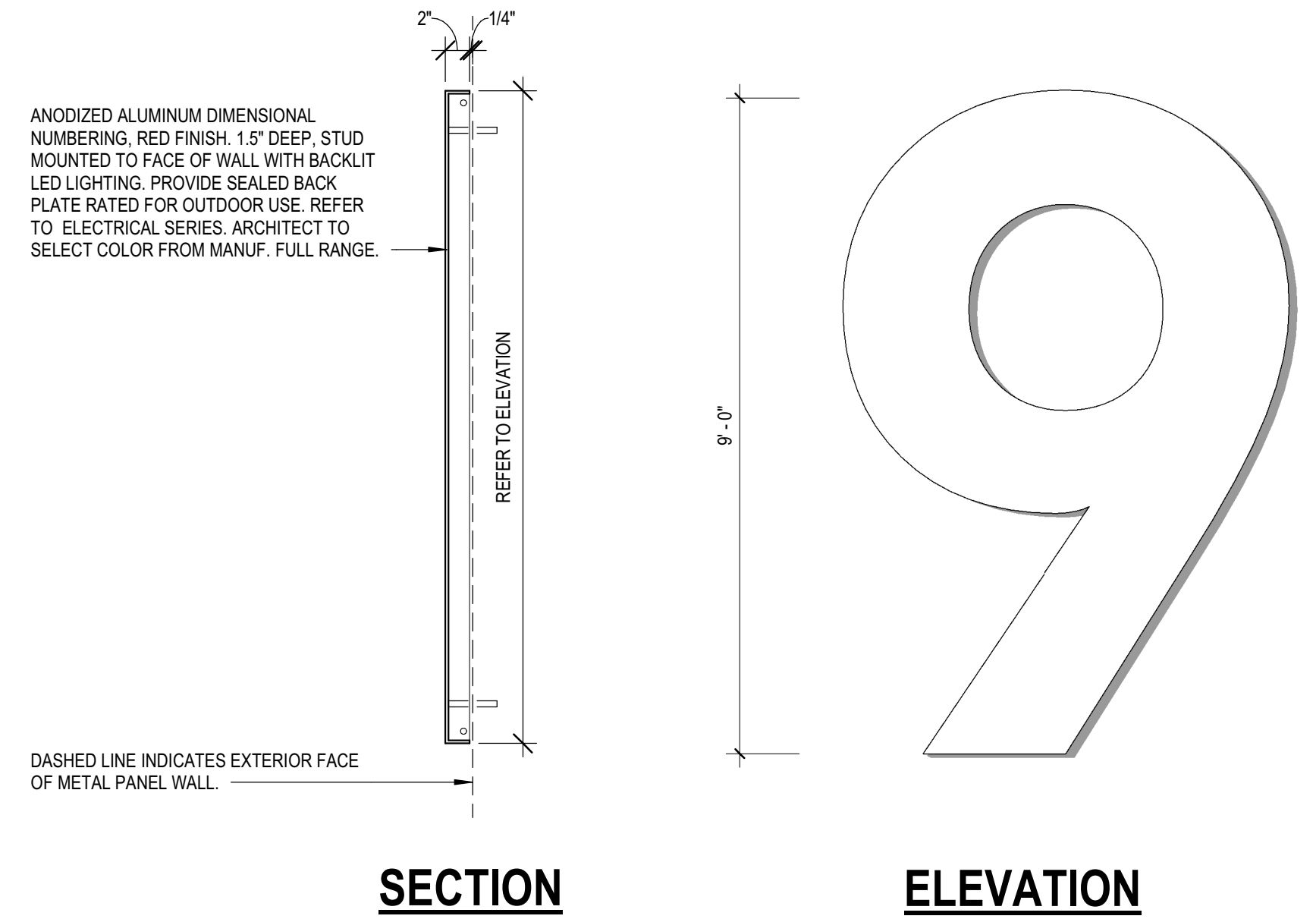
- GENERAL SITE PLAN NOTES: 1. REFER TO G-SERIES SHEETS FOR TYPICAL ABBREVIATIONS, SYMBOLS & TAGS. 2. REFER TO CIVIL AND LANDSCAPE DRAWINGS FOR ADDITIONAL INFORMATION. 3. EXPOSED FERROUS METALS ARE TO BE PAINTED, U.O. 4. PROVIDE GALVANIC SEPARATION BETWEEN DIFFERENT METAL TYPES, TYP. 5. NOTE ANY DISCREPANCIES BETWEEN CIVIL AND ARCHITECTURAL DRAWINGS WITH REGARDS TO SCORING PATTERNS AND CONTROL JOINTS IN PAVING AND CONCRETE FLATWORK AND NOTIFY ARCHITECT PRIOR TO PROCEEDING. 6. COORDINATE SITE LIGHTING WITH ELECTRICAL DRAWINGS. 7. SEE LANDSCAPE DRAWINGS FOR TREE LOCATIONS. 8. FOR DETAILED CIVIL NOTES, REFER TO CIVIL DRAWINGS. SITE PLAN LEGEND: PROPERTY LINE, SETBACK LINE, EASEMENT LINE, ROOF OVERHANG LINE, FENCE LINE, INDICATES CONCRETE PAVEMENT, INDICATES BUILDING FOOTPRINT, INDICATES CONCRETE SIDEWALK, INDICATES SNOW MELT SYSTEM, INDICATES NEW ASPHALT PAVEMENT.



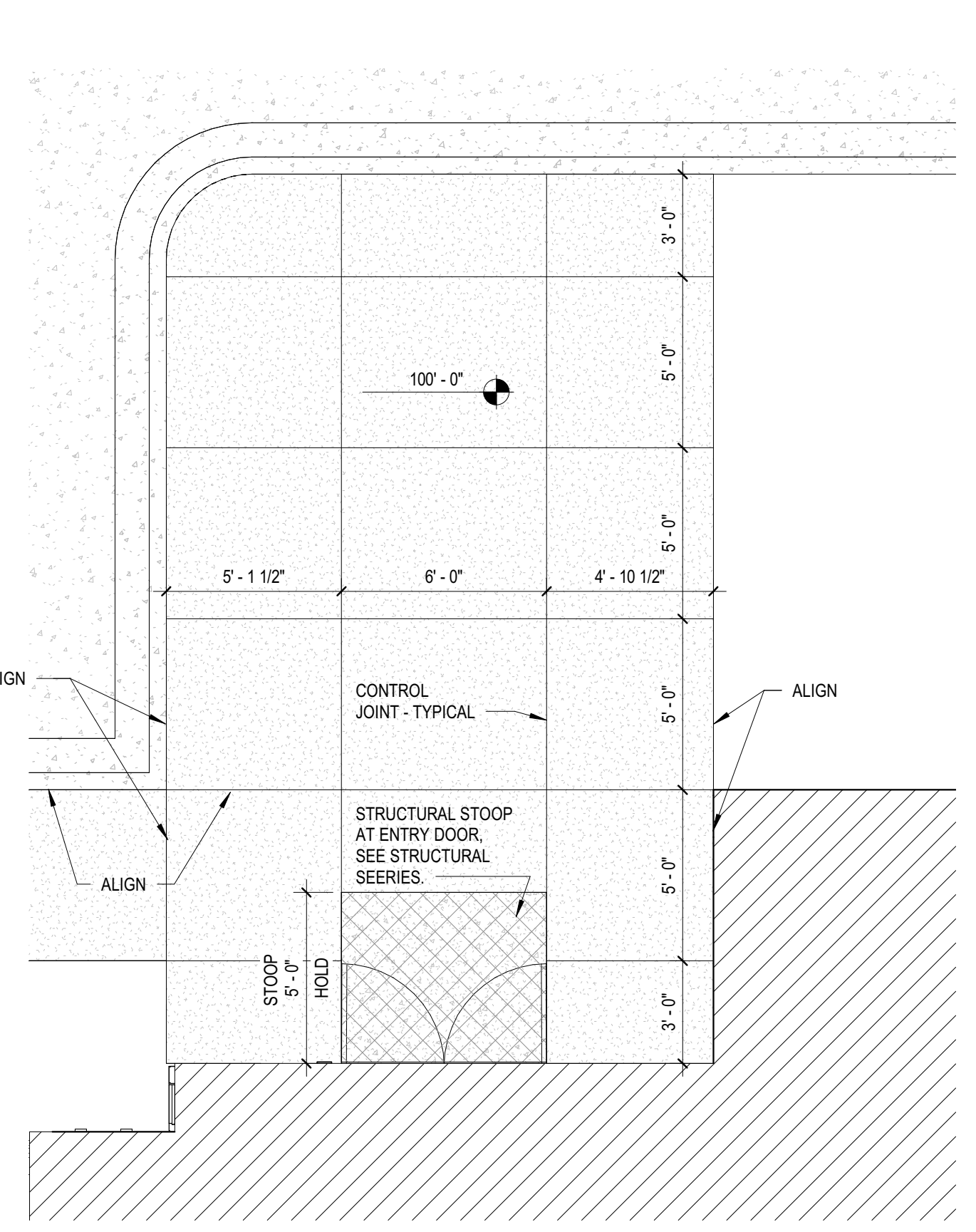
7 ELEVATION - MONUMENT SIGN 3/4" = 1'-0"



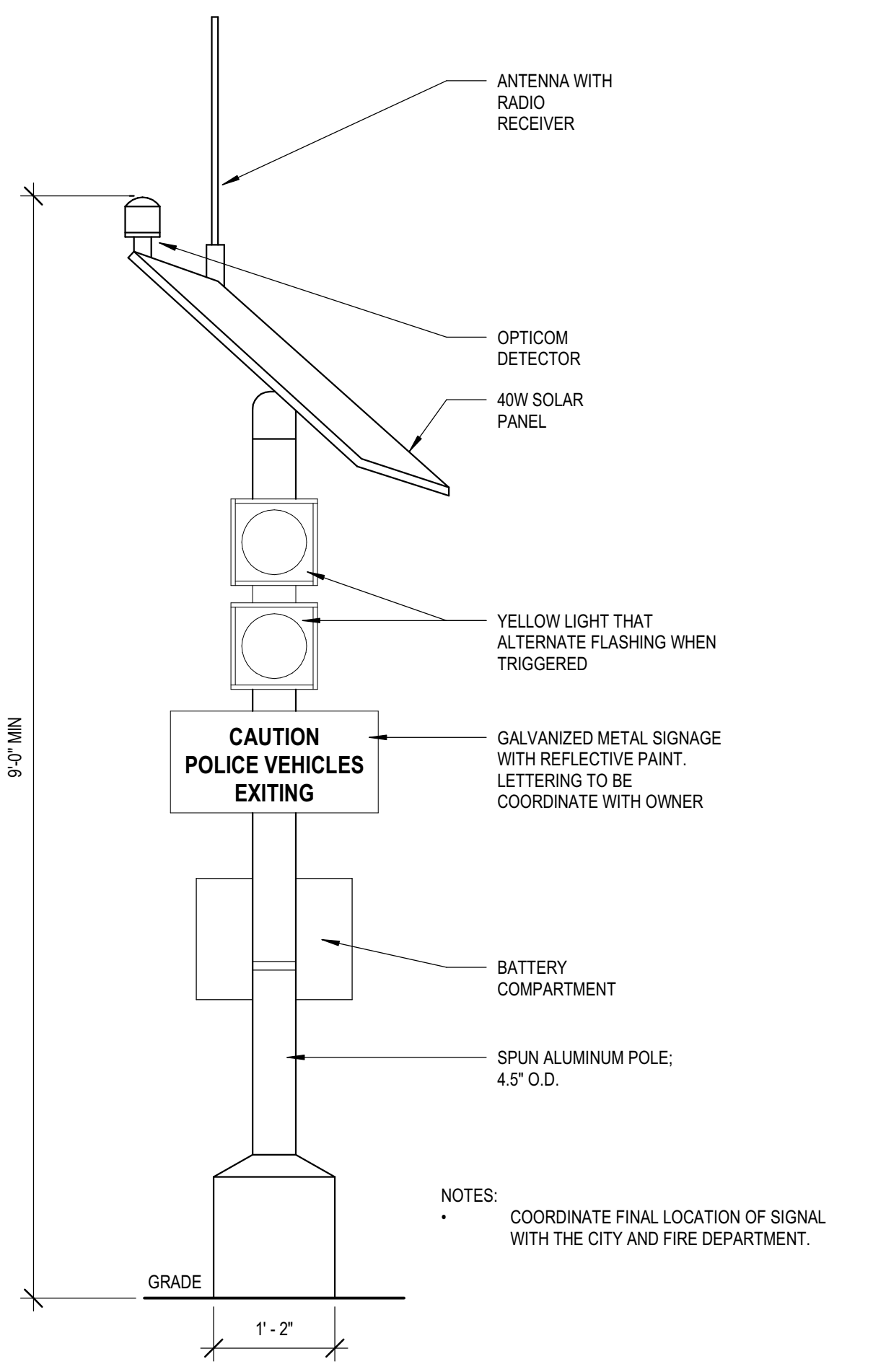
8 ENLARGED PLAN - STAFF ENTRY / PATIO 1/4" = 1'-0"



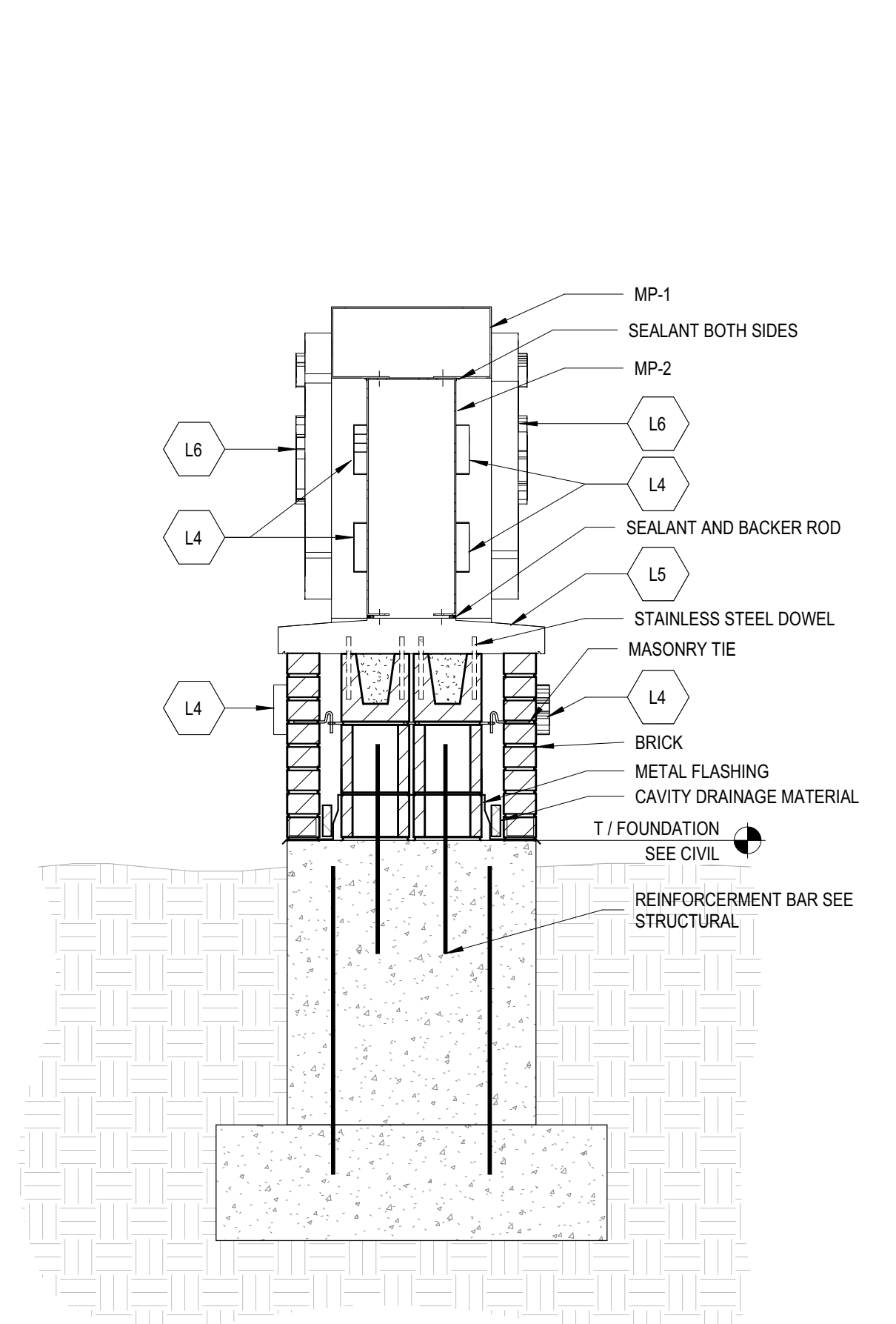
6 EXTERIOR SIGN 1/2" = 1'-0"



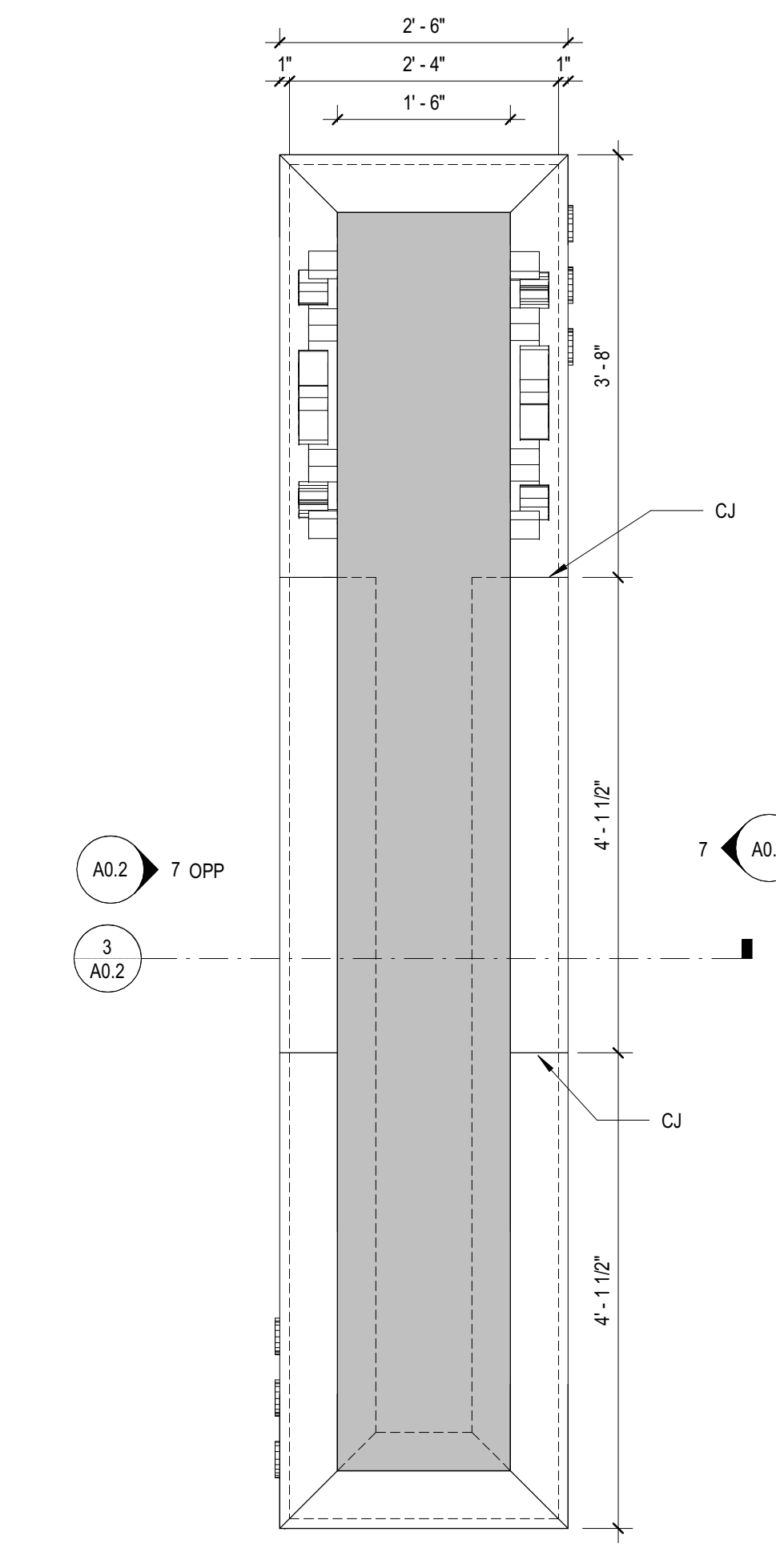
5 ENLARGED PLAN - PUBLIC ENTRY 1/4" = 1'-0"



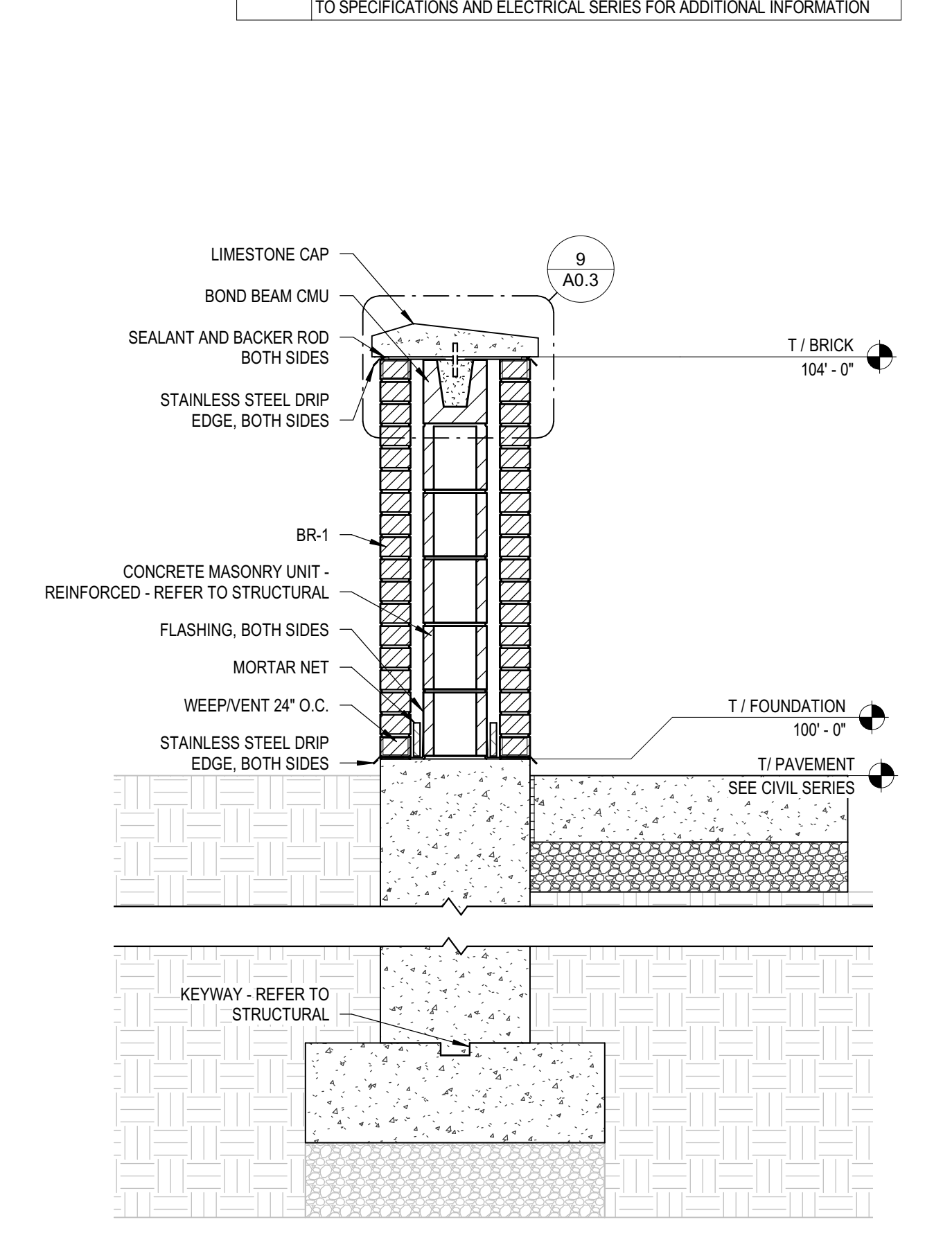
4 DETAIL - TRAFFIC SIGN 3/4" = 1'-0"



3 SECTION - MONUMENT SIGN 3/4" = 1'-0"



2 PLAN - MONUMENT SIGN 3/4" = 1'-0"



1 PATIO WALL SECTION 3/4" = 1'-0"

EXTERIOR ELEVATIONS KEYED NOTES table with columns TAG, DESCRIPTION