

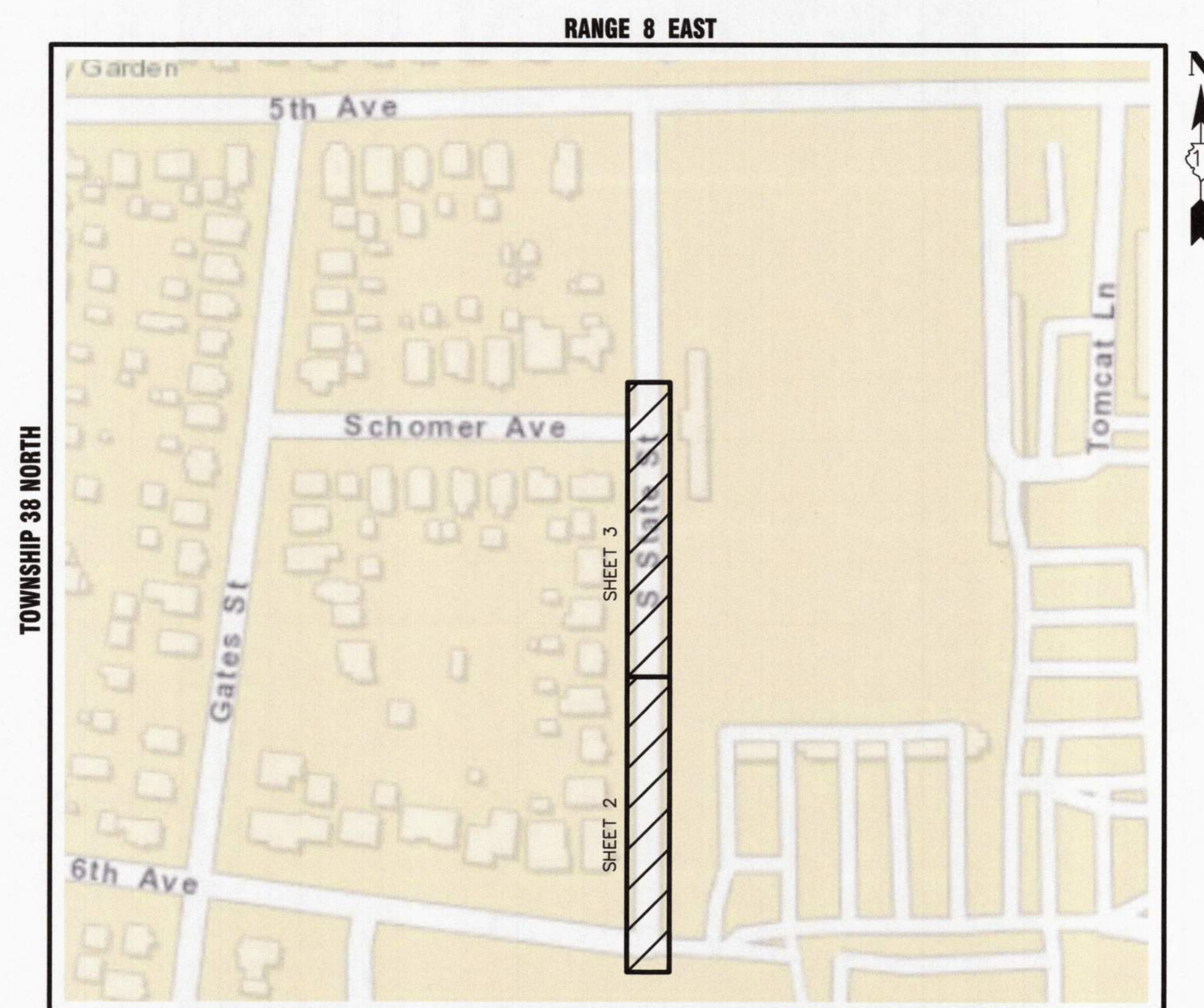
AURORA ILLINOIS

PLANS FOR THE PROPOSED STATE ST WATER MAIN REPLACEMENT FROM SCHOMER AVE TO 6TH AVE

APRIL 2024

GENERALLY LOCATED IN THE N. 1/2 OF SEC 26, T38N, R8E

| LEGEND | | |
|---|--------------|--------------|
| | EXISTING | PROPOSED |
| SANITARY SEWER | —) — | —) — |
| STORM SEWER | — > — | — > — |
| WATER MAIN | — W — | — W — |
| FORCE MAIN | — FM — | — FM — |
| UNDERDRAIN | — UD — | — UD — |
| OVERHEAD LINE | — OH — | — OH — |
| CABLE TV LINE | — CATV — | — CATV — |
| GAS LINE | — GAS — | — GAS — |
| TELEPHONE LINE | — T — | — T — |
| ELECTRIC LINE | — E — | — E — |
| FENCE | — X — | — X — |
| MAJOR CONTOUR | — — — | — — — |
| MINOR CONTOUR | — — — | — — — |
| HIGH WATER LEVEL | — HWL — | — HWL — |
| NORMAL WATER LEVEL | — NWL — | — NWL — |
| PAVEMENT FLOW DIRECTION | — — — | — — — |
| SPOT ELEVATION | X 282.6 | X 282.6 |
| TOP OF CURB ELEVATION | X 282.6 TC | X 282.6 TC |
| TOP OF FOUNDATION ELEVATION | X 282.6 T/F | X 282.6 T/F |
| GUTTER ELEVATION | X 282.6 FL | X 282.6 FL |
| PAVEMENT ELEVATION | X 282.6 P | X 282.6 P |
| EDGE OF PAVEMENT | — — — | — — — |
| CURB AND GUTTER | — — — | — — — |
| RIGHT-OF-WAY | — — — | — — — |
| SANITARY MANHOLE | ⊙ | ⊙ |
| SANITARY CLEANOUT | ⊙ | ⊙ |
| STORM MANHOLE | ⊙ | ⊙ |
| CATCH BASIN | ⊙ | ⊙ |
| INLET | ⊙ | ⊙ |
| FLARED END SECTION | ⊙ | ⊙ |
| FIRE HYDRANT | ⊙ | ⊙ |
| VALVE VAULT | ⊙ | ⊙ |
| VALVE BOX | ⊙ | ⊙ |
| STREET LIGHT | ⊙ | ⊙ |
| POWER POLE | ⊙ | ⊙ |
| STREET SIGN | ⊙ | ⊙ |
| ELECTRIC BOX | ⊙ | ⊙ |
| TELEPHONE BOX | ⊙ | ⊙ |
| TELEPHONE MANHOLE | ⊙ | ⊙ |
| B-BOX | ⊙ | ⊙ |
| GAS VALVE | ⊙ | ⊙ |
| TRAFFIC HANDHOLE | ⊙ | ⊙ |
| ELECTRIC HANDHOLE | ⊙ | ⊙ |
| TREE W/ DIAMETER | ⊙ | ⊙ |
| MAILBOX | ⊙ | ⊙ |
| STRUCTURE TO BE REMOVED | ⊙ | ⊙ |
| PLUG EXISTING PIPE | ⊙ | ⊙ |
| UTILITY CROSSING | ⊙ | ⊙ |
| EXPLORATORY EXCAVATION LOCATION | ⊙ | ⊙ |
| SANITARY MANHOLE REHABILITATION NUMBER | 3-C-100 ⊙ | 3-C-100 ⊙ |
| SOIL BORING LOCATION WITH IDENTIFICATION NUMBER & ELEVATION | SB #1 600.00 | SB #1 600.00 |



KANE COUNTY - AURORA TOWNSHIP
THIRD PRINCIPAL MERIDIAN

LOCATION MAP
NOT TO SCALE

INDEX OF SHEETS

- 1 COVER SHEET
- 2-3 PLAN AND PROFILE
- 4-8 STANDARD DETAILS



J.U.L.I.E.
JOINT UTILITY LOCATION INFORMATION FOR EXCAVATION
811 OR 1-800-892-0123

CONSTRUCTION AND MAINTENANCE TO BE IN
ACCORDANCE WITH ALL APPLICABLE REGULATORY
REQUIREMENTS AND STANDARDS

**PRINTED BY THE AUTHORITY
OF THE CITY OF AURORA**

PLANS PREPARED BY:
CITY OF AURORA
DEPARTMENT OF PUBLIC WORKS - ENGINEERING DIVISION
77 S. BROADWAY AVE, AURORA, IL 60505
PHONE: 630-256-3200 FAX: 630-256-3229

| | | | | | |
|------------------|---------------|-----------------|------------------|-------------------|------------------|
| REVISIONS: | | | | | |
| DESIGNED BY: JDH | DRAWN BY: AHB | CHECKED BY: KTM | APPROVED BY: KTM | HORIZ. SCALE: N/A | DATE: APRIL 2024 |
| | | | | VERT. SCALE: N/A | |

STAMP *kt m*
ILLINOIS REGISTERED PROFESSIONAL
ENGINEER No. 062.599993
LICENSE EXPIRES NOVEMBER 30, 2025
DATE *4/22/24*