

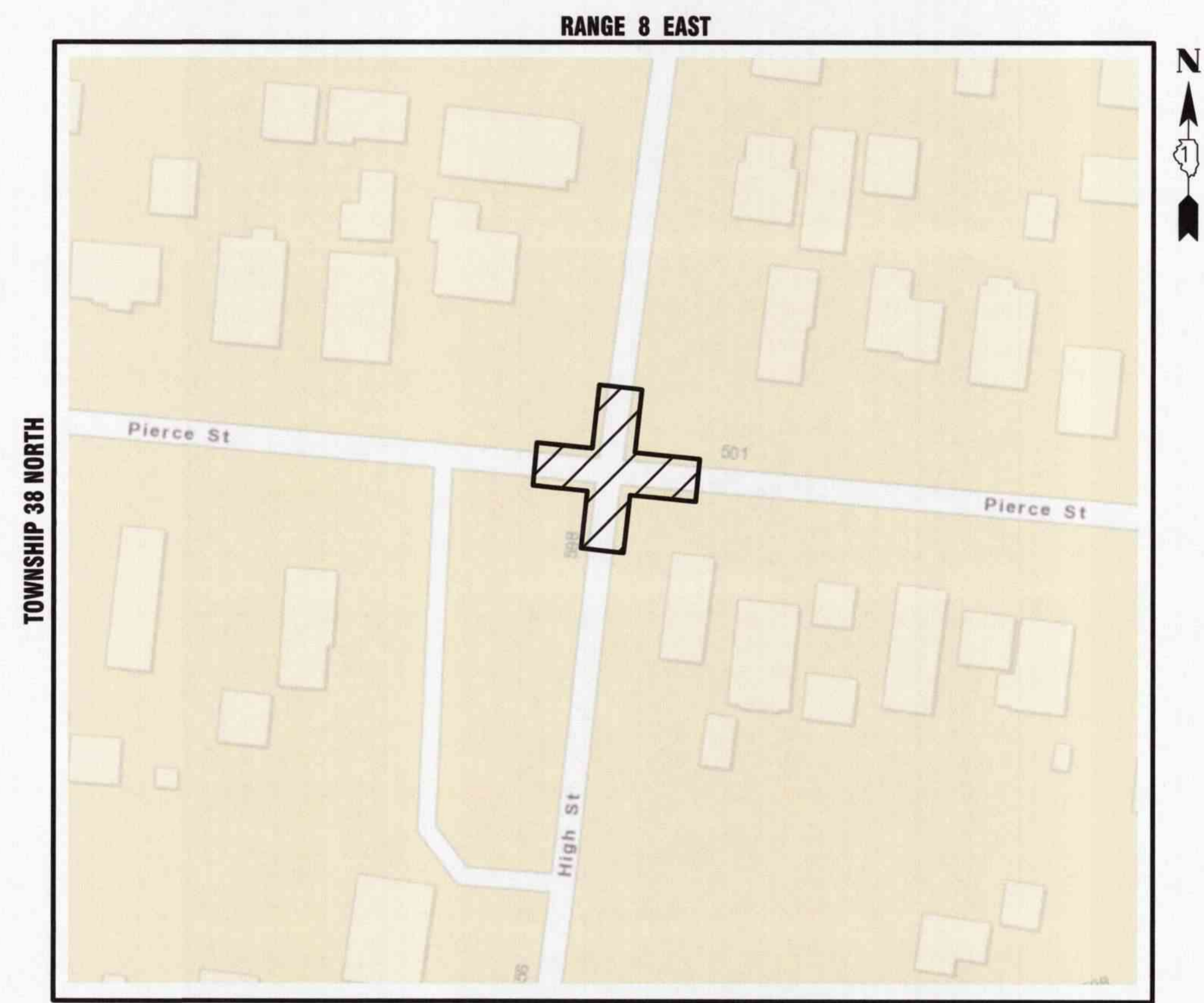
AURORA ILLINOIS

PLANS FOR THE PROPOSED HIGH ST AND PIERCE ST INTERSECTION WATER MAIN IMPROVEMENTS

FEBRUARY 2025

GENERALLY LOCATED IN THE S. 1/2 OF SEC 15, T38N, R8E

LEGEND		
	EXISTING	PROPOSED
SANITARY SEWER	_____	_____
STORM SEWER	_____	_____
WATER MAIN	_____	_____
FORCE MAIN	_____	_____
UNDERDRAIN	_____	_____
OVERHEAD LINE	_____	_____
CABLE TV LINE	_____	_____
GAS LINE	_____	_____
TELEPHONE LINE	_____	_____
ELECTRIC LINE	_____	_____
FENCE	_____	_____
MAJOR CONTOUR	_____	_____
MINOR CONTOUR	_____	_____
HIGH WATER LEVEL	_____	_____
NORMAL WATER LEVEL	_____	_____
PAVEMENT FLOW DIRECTION		
SPOT ELEVATION	X 882.6	X 882.6
TOP OF CURB ELEVATION	X 882.6 TC	X 882.6 TC
TOP OF FOUNDATION ELEVATION	X 882.6 T/F	X 882.6 T/F
GUTTER ELEVATION	X 882.6 FL	X 882.6 FL
PAVEMENT ELEVATION	X 882.6 P	X 882.6 P
EDGE OF PAVEMENT	=====	=====
CURB AND GUTTER	=====	=====
RIGHT-OF-WAY	=====	=====
SANITARY MANHOLE		
SANITARY CLEANOUT		
STORM MANHOLE		
CATCH BASIN		
INLET		
FLARED END SECTION		
FIRE HYDRANT		
VALVE VAULT		
VALVE BOX		
STREET LIGHT		
POWER POLE		
STREET SIGN		
ELECTRIC BOX		
TELEPHONE BOX		
TELEPHONE MANHOLE		
B-BOX		
GAS VALVE		
TRAFFIC HANDHOLE		
ELECTRIC HANDHOLE		
TREE W/ DIAMETER		
MAILBOX		
INLET PROTECTION		
STRUCTURE TO BE REMOVED		
PLUG EXISTING PIPE		
UTILITY CROSSING		
EXPLORATORY EXCAVATION LOCATION		
SANITARY MANHOLE REHABILITATION NUMBER	3-C-100	
SOIL BORING LOCATION WITH IDENTIFICATION NUMBER & ELEVATION		



KANE COUNTY - AURORA TOWNSHIP
THIRD PRINCIPAL MERIDIAN

LOCATION MAP
NOT TO SCALE

INDEX OF SHEETS

- 1 COVER SHEET
- 2 PLAN AND PROFILE
- 3-8 STANDARD DETAILS



J.U.L.I.E.
JOINT UTILITY LOCATION INFORMATION FOR EXCAVATION
811 OR 1-800-892-0123

CONSTRUCTION AND MAINTENANCE TO BE IN
ACCORDANCE WITH ALL APPLICABLE REGULATORY
REQUIREMENTS AND STANDARDS

**PRINTED BY THE AUTHORITY
OF THE CITY OF AURORA**

PLANS PREPARED BY:
CITY OF AURORA
DEPARTMENT OF PUBLIC WORKS - ENGINEERING DIVISION
77 S. BROADWAY AVE, AURORA, IL 60505
PHONE: 630-256-3200 FAX: 630-256-3229

REVISIONS:					
DESIGNED BY: KTM	DRAWN BY: AHB	CHECKED BY: KTM	APPROVED BY: KTM	HORIZ. SCALE: N/A	DATE: 2025
				VERT. SCALE: N/A	

STAMP *KTM*
ILLINOIS REGISTERED PROFESSIONAL ENGINEER No. 50993
LICENSE EXPIRES NOVEMBER 30, 2025
DATE *2/24/25*