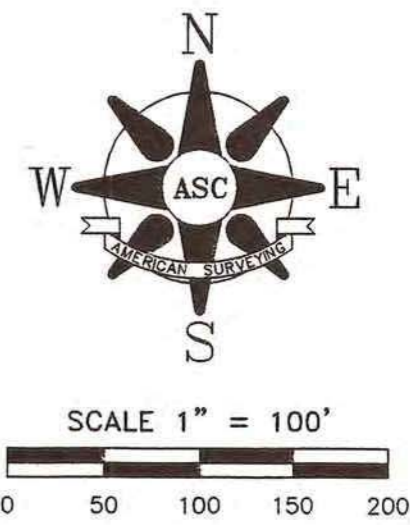


PLAT OF SURVEY

Part of the Northeast Quarter of Section 18, Township 38 North, Range 7 East of the Fourth Principal Meridian, Kane County, Illinois.

Commencing at the Northwest Corner of said Northeast Quarter of Section 18; thence North 89 degrees 34 minutes 19 seconds East along the North Line of said Northeast Quarter, a distance of 133.53 feet to the Point of Beginning; thence North 89 degrees 34 minutes 19 seconds East along said North Line, a distance of 868.30 feet; thence 75.00 feet along a curve concave to the Southeast, having a radius of 508.72 feet, a central angle of 8 degrees 26 minutes 50 seconds and the long chord of said bears South 63 degrees 42 minutes 36 seconds West, a chord distance of 74.93 feet; thence South 59 degrees 29 minutes 12 seconds West, a distance of 204.31 feet; thence South 30 degrees 30 minutes 48 seconds East, a distance of 1.00 foot; thence South 59 degrees 29 minutes 12 seconds West, a distance of 16.00 feet; thence North 30 degrees 30 minutes 48 seconds West, a distance of 1.00 foot; thence South 59 degrees 29 minutes 12 seconds West, a distance of 28.95 feet; thence 650.32 feet along a curve concave to the North, having a radius of 426.72 feet, a central angle of 87 degrees 19 minutes 08 seconds and the long chord of said curve bears North 76 degrees 51 minutes 15 seconds West, a chord distance of 589.19 feet; thence North 33 degrees 11 minutes 41 seconds West, a distance of 23.02 feet to the Point of Beginning, containing 2.759 acres, more or less.



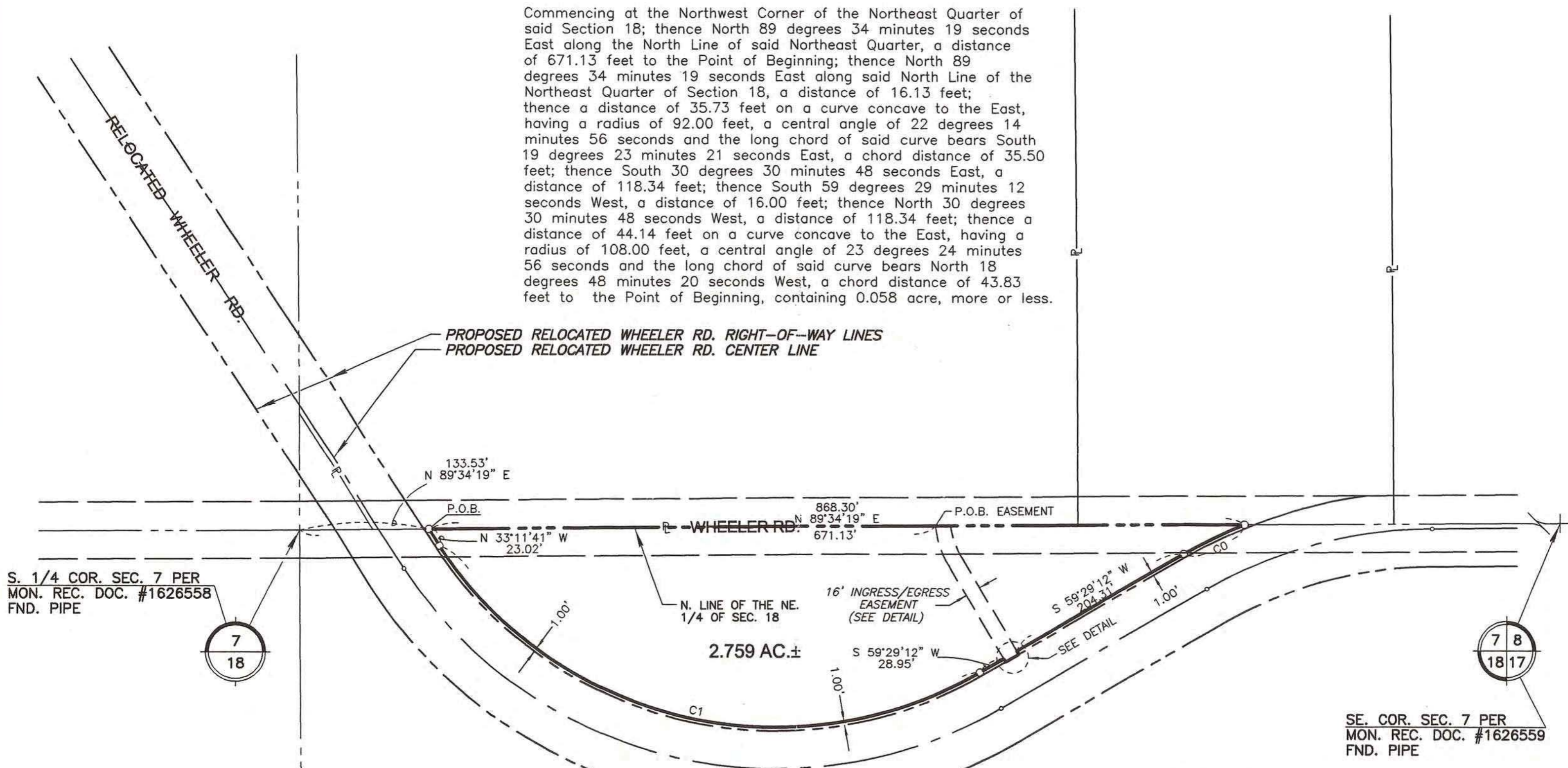
LEGEND

- - FOUND IR
- - SET 5/8" REBAR
- - SECTION LINE
- - BOUNDARY OF SURVEY
- - EXISTING R-O-W LINE

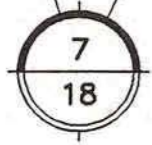
EASEMENT DESCRIPTION

A parcel of land in the Northeast Quarter of Section 18, Township 38 North, Range 7 East of the Fourth Principal Meridian, Kane County, Illinois, described as follows:

Commencing at the Northwest Corner of the Northeast Quarter of said Section 18; thence North 89 degrees 34 minutes 19 seconds East along the North Line of said Northeast Quarter, a distance of 671.13 feet to the Point of Beginning; thence North 89 degrees 34 minutes 19 seconds East along said North Line of the Northeast Quarter of Section 18, a distance of 16.13 feet; thence a distance of 35.73 feet on a curve concave to the East, having a radius of 92.00 feet, a central angle of 22 degrees 14 minutes 56 seconds and the long chord of said curve bears South 19 degrees 23 minutes 21 seconds East, a chord distance of 35.50 feet; thence South 30 degrees 30 minutes 48 seconds East, a distance of 118.34 feet; thence South 59 degrees 29 minutes 12 seconds West, a distance of 16.00 feet; thence North 30 degrees 30 minutes 48 seconds West, a distance of 118.34 feet; thence a distance of 44.14 feet on a curve concave to the East, having a radius of 108.00 feet, a central angle of 23 degrees 24 minutes 56 seconds and the long chord of said curve bears North 18 degrees 48 minutes 20 seconds West, a chord distance of 43.83 feet to the Point of Beginning, containing 0.058 acre, more or less.



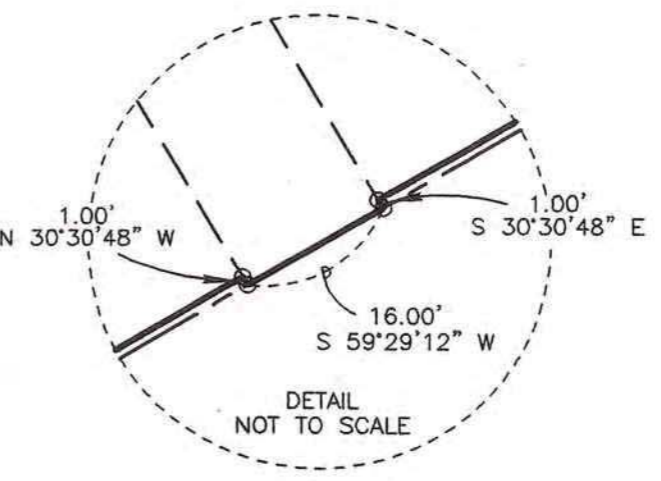
S. 1/4 COR. SEC. 7 PER
MON. REC. DOC. #1626558
FND. PIPE



SE. COR. SEC. 7 PER
MON. REC. DOC. #1626559
FND. PIPE



CURVE	ARC	DELTA	CHORD	CB	RADIUS
C0	75.00'	8°26'50"	74.93'	S 63°42'36" W	508.72'
C1	650.32'	87°19'08"	589.19'	N 76°51'15" W	426.72'

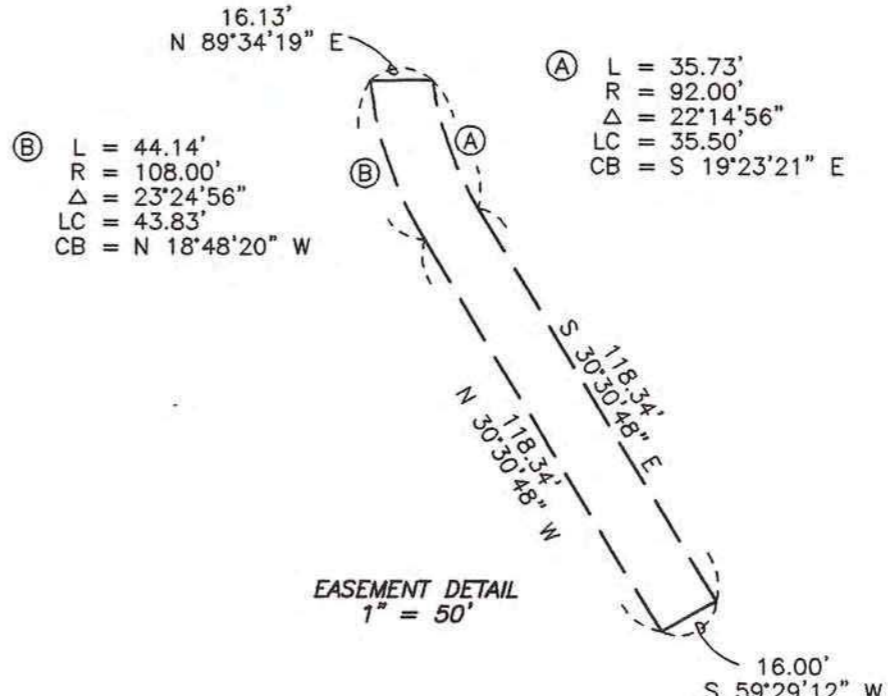


STATE OF ILLINOIS)
COUNTY OF LEE) S.S.

I, HEREBY CERTIFY that the above described property was surveyed by me or under my direct supervision; that all monuments and markers exist as shown hereon; and that all dimensional and geodetic details are to the best of my knowledge and belief correct as shown hereon. Dimensions are in feet and decimals of a foot unless otherwise specified. Bearings or angles are in degrees, minutes, and seconds, unless otherwise specified.

IN WITNESS WHEREOF, I have hereunto set my hand and seal this 13th day of AUGUST, 1999, A.D.

Coventine Fidis
COVENTINE FIDIS - ILLINOIS PROFESSIONAL
LAND SURVEYOR NUMBER 35-2159



DRAWN BY: Craig Hills		American Surveying Consultants, P.C. SURVEYORS · ENGINEERS · GEODESISTS · MAPPING SCIENTISTS		WHEELER RD. (CMT)	DRAWING NO. 1 of 1 98-385-2
ASC APPROVED BY: Coventine Fidis		1637 Plock Rd./Dixon, IL 61021 6035 N. Northwest Highway/Chicago, IL 60631 815-288-6231 312-763-1387	GPS		DATE: 8/12/99

WHEELER RD. MAP 98385-014
AURORA AIRPORT