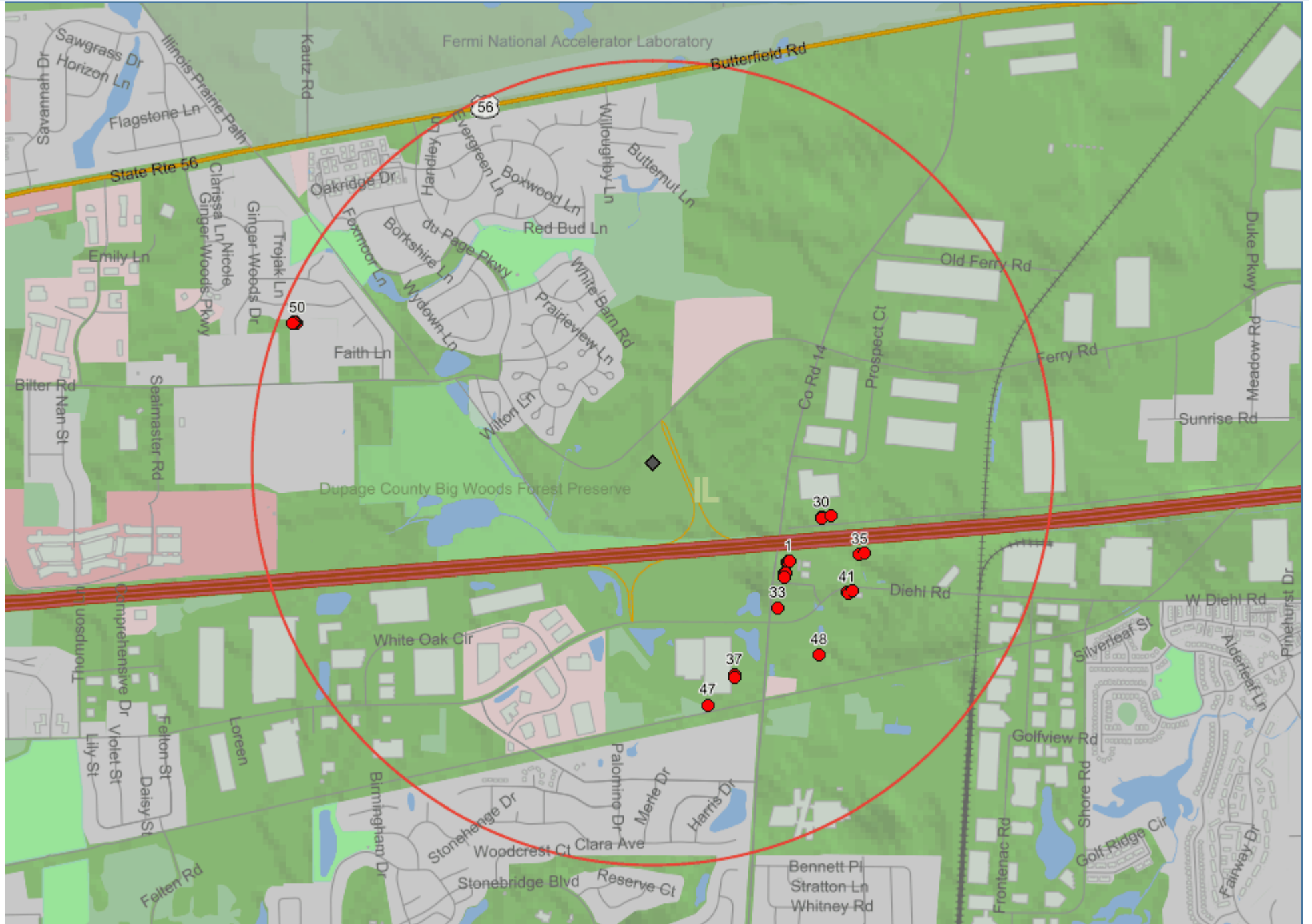


Search Structures - North tower 1 mile radius Biliter

41.803855, -88.246113, radius 1 mi / 1.6 km



Search Structures - North tower 1 mile radius Bilter

41.803855, -88.246113, radius 1 mi / 1.6 km

| # | Dist | Type | Name | Coords | Height | Structure | Entity | Address |
|----|--------------------|------|-------------------|-------------------------|---------------------|--------------|----------------------------|--|
| 1 | 0.42 mi 0.67 km | FAA | 01-AGL-2543-OE | 41.800304 -88.239555 | 200.13 ft 61 m | | ATT WIRELESS SERVICES | NAPERVILLE, IL |
| 2 | 0.42 mi 0.67 km | FAA | 2001-AGL-130-OE | 41.800304 -88.239555 | 200.13 ft 61 m | | AMERICAN TOWER LP | NAPERVILLE, IL |
| 3 | 0.42 mi 0.67 km | TC | 3262 | 41.800256 -88.239592 | 239 ft 72.85 m | Self Support | American Tower Corporation | 31 W. 524 Diehl Rd., AURORA, IL, 60502-9493,... |
| 4 | 0.42 mi 0.67 km | FAA | 2007-AGL-6228-OE | 41.800251 -88.239586 | 188.98 ft 57.6 m | | AMERICAN TOWER CORP. | WARRENVILLE, IL |
| 5 | 0.42 mi 0.67 km | FAA | 2021-AGL-30868-OE | 41.800251 -88.239586 | 240.16 ft 73.2 m | | AMERICAN TOWERS LLC - AS | AURORA, IL |
| 6 | 0.42 mi 0.67 km | FAA | 2013-AGL-5025-OE | 41.800251 -88.239586 | 225.07 ft 68.6 m | | AMERICAN TOWERS, LLC | NAPERVILLE, IL |
| 7 | 0.42 mi 0.67 km | FAA | 2011-AGL-6420-OE | 41.800251 -88.239586 | 226.05 ft 68.9 m | | AMERICAN TOWER CORP. | WARRENVILLE, IL |
| 8 | 0.42 mi 0.67 km | FAA | 2009-AGL-3916-OE | 41.800251 -88.239586 | 194.88 ft 59.4 m | | AMERICAN TOWER CORP. | WARRENVILLE, IL |
| 9 | 0.42 mi 0.67 km | FAA | 2008-AGL-4955-OE | 41.800251 -88.239586 | 188.98 ft 57.6 m | | AMERICAN TOWER CORP. | WARRENVILLE, IL |
| 10 | 0.42 mi 0.67 km | FAA | 2013-AGL-10584-OE | 41.800251 -88.239586 | 240.16 ft 73.2 m | | AMERICAN TOWER | NAPERVILLE, IL |
| 11 | 0.42 mi 0.67 km | FAA | 2014-AGL-12544-OE | 41.800251 -88.239586 | 240.16 ft 73.2 m | | AMERICAN TOWER | NAPERVILLE, IL |
| 12 | 0.42 mi 0.67 km | FAA | 2013-AGL-10267-OE | 41.800251 -88.239586 | 225.07 ft 68.6 m | | AMERICAN TOWER | NAPERVILLE, IL |
| 13 | 0.42 mi 0.67 km | FAA | 2013-AGL-319-OE | 41.800251 -88.239586 | 225.07 ft 68.6 m | | AMERICAN TOWERS LLC | NAPERVILLE, IL |
| 14 | 0.42 mi 0.67 km | FAA | 2012-AGL-2966-OE | 41.800251 -88.239586 | 225.07 ft 68.6 m | | AMERICAN TOWER CORP. | WARRENVILLE, IL |
| 15 | 0.42 mi 0.67 km | FAA | 2012-AGL-62-OE | 41.800251 -88.239586 | 226.05 ft 68.9 m | | AMERICAN TOWER CORP. | WARRENVILLE, IL |
| 16 | 0.42 mi 0.67 km | FAA | 2003-AGL-7865-OE | 41.800251 -88.239586 | 188.98 ft 57.6 m | | AMERICAN TOWER #3262 | WARRENSVILLE, IL |
| 17 | 0.42 mi 0.67 km | FAA | 2013-AGL-2607-OE | 41.800251 -88.239586 | 225.07 ft 68.6 m | | AMERICAN TOWERS LLC | NAPERVILLE, IL |
| 18 | 0.42 mi 0.67 km | FAA | 2013-AGL-173-OE | 41.800251 -88.239586 | 225.07 ft 68.6 m | | AMERICAN TOWER | NAPERVILLE, IL |
| 19 | 0.42 mi 0.67 km | FCC | 1281587 | 41.80025 -88.239583 | 238.85 ft 72.8 m | LTOWER | American Towers LLC | 31 W. 524 Diehl Rd. (003262 / I-88 & Eola),... |
| 20 | 0.42 mi 0.68 km | FAA | 98-AGL-5824-OE | 41.800304 -88.239502 | 200.13 ft 61 m | | AMERICAN TOWER CORPORATION | AURORA, IL |
| 21 | 0.43 mi 0.69 km | FAA | 2016-AGL-16099-OE | 41.799889 -88.239777 | 100.07 ft 30.5 m | | CROWN CASTLE FOR SPRINT | NAPERVILLE, IL |

Search Structures - North tower 1 mile radius Bilter

41.803855, -88.246113, radius 1 mi / 1.6 km

| # | Dist | Type | Name | Coords | Height | Structure | Entity | Address |
|----|--------------------|------|-------------------|-------------------------|----------------------|-----------|------------------------------------|--|
| 22 | 0.43 mi 0.69 km | FAA | 2021-AGL-29915-OE | 41.799889 -88.239777 | 109.91 ft 33.5 m | | CROWN CASTLE (MG) | NAPERVILLE, IL |
| 23 | 0.43 mi 0.69 km | FAA | 2017-AGL-7119-OE | 41.799889 -88.239777 | 109.91 ft 33.5 m | | CROWN CASTLE FOR SPRINT | NAPERVILLE, IL |
| 24 | 0.43 mi 0.69 km | FAA | 2012-AGL-6233-OE | 41.799862 -88.239754 | 80.05 ft 24.4 m | | CROWN CASTLE USA FOR SPRINT | AURORA, IL |
| 25 | 0.43 mi 0.69 km | FAA | 2011-AGL-4400-OE | 41.799862 -88.239754 | 80.05 ft 24.4 m | | CROWN CASTLE USA FOR SPRINT | AURORA, IL |
| 26 | 0.43 mi 0.69 km | FAA | 2016-AGL-3582-OE | 41.799862 -88.239754 | 80.05 ft 24.4 m | | CROWN CASTLE FOR SPRINT | AURORA, IL |
| 27 | 0.43 mi 0.69 km | FAA | 2016-AGL-12928-OE | 41.799862 -88.239754 | 80.05 ft 24.4 m | | CROWN CASTLE FOR SPRINT | AURORA, IL |
| 28 | 0.43 mi 0.69 km | TC | 875614 | 41.7999 -88.2397 | 65.5 ft 19.96 m | MONOPOLE | Crown Castle International | 31 W 524 DIEHL RD, NAPERVILLE, IL, 60563,... |
| 29 | 0.43 mi 0.7 km | FAA | 1998-AGL-1572-OE | 41.799751 -88.239777 | 80.05 ft 24.4 m | | SPRINT PCS | AURORA, IL |
| 30 | 0.44 mi 0.71 km | FAA | 2006-AGL-4965-OE | 41.801888 -88.237968 | 299.87 ft 91.4 m | | NICOR GAS | EOLA, IL |
| 31 | 0.44 mi 0.71 km | FCC | 1256058 | 41.801861 -88.237944 | 299.87 ft 91.4 m | TOWER | NICOR GAS COMPANY | East of Eola Road and north of Interstate 88,... |
| 32 | 0.46 mi 0.75 km | FAA | 2003-AGL-7118-OE | 41.801945 -88.237503 | 299.87 ft 91.4 m | | FIRST BROADCASTING MANAGEMENT, LLC | NAPERVILLE, IL |
| 33 | 0.48 mi 0.77 km | FCC | 1299832 | 41.798639 -88.240083 | 350.07 ft 106.7 m | LTOWER | Pierce Broadband, LLC | 31 W. 524 Diehl Road, Naperville, IL,... |
| 34 | 0.48 mi 0.77 km | FAA | 2016-AGL-724-OE | 41.798637 -88.240082 | 357.94 ft 109.1 m | | PIERCE BROADBAND | NAPERVILLE, IL |
| 35 | 0.56 mi 0.91 km | FAA | 2013-AGL-7316-OE | 41.800556 -88.236115 | 328.08 ft 100 m | | I-355 & 143RD LLC | NAPERVILLE, IL |
| 36 | 0.56 mi 0.91 km | FCC | 1045632 | 41.800556 -88.236111 | 299.87 ft 91.4 m | TOWER | I355 & 143rd, LLC | 31 W 478 DIEHL RD, NAPERVILLE, IL, 60563 |
| 37 | 0.56 mi 0.91 km | FCC | 1305893 | 41.796222 -88.242167 | 357.94 ft 109.1 m | LTOWER | CyrusOne LLC | 2905 Diehl Road, Aurora, IL, 60502 |
| 38 | 0.56 mi 0.91 km | FAA | 2018-AGL-2422-OE | 41.796223 -88.242165 | 357.94 ft 109.1 m | | CYRUSONE | AURORA, IL |
| 39 | 0.57 mi 0.92 km | FAA | 2017-AGL-4632-OE | 41.796139 -88.242142 | 350.07 ft 106.7 m | | CYRUS ONE | AURORA, IL |
| 40 | 0.57 mi 0.92 km | FAA | 97-AGL-3920-OE | 41.800583 -88.235886 | 299.87 ft 91.4 m | | TRANSMISSIONS HOLDINGS INC | AURORA, IL |
| 41 | 0.58 mi 0.94 km | FAA | 75-GL-544-OE | 41.799194 -88.236725 | 324.15 ft 98.8 m | | BLANK | WARRENVILLE, IL |
| 42 | 0.58 mi 0.94 km | FAA | 1996-AGL-4189-OE | 41.799194 -88.236725 | 313.98 ft 95.7 m | | AT&T CORP | WARRENVILLE, IL |

Search Structures - North tower 1 mile radius Bilter

41.803855, -88.246113, radius 1 mi / 1.6 km

| # | Dist | Type | Name | Coords | Height | Structure | Entity | Address |
|----|--------------------|------|-------------------|-------------------------|---------------------|-----------|----------------------------------|--|
| 43 | 0.59 mi 0.94 km | TC | | 41.799167 -88.236667 | 305 ft 92.96 m | Lattice | AT&T Towers | 2968 Diehl Road, Aurora, IL, 60502,... |
| 44 | 0.59 mi 0.95 km | FCC | 1014809 | 41.79925 -88.236444 | 298.88 ft 91.1 m | TOWER | AT&T Corp | DIEHL ROAD, EOLA, IL, 60563 |
| 45 | 0.59 mi 0.95 km | FAA | 2011-AGL-996-OE | 41.799252 -88.236443 | 310.04 ft 94.5 m | | AT&T CORP. | EOLA, IL |
| 46 | 0.59 mi 0.95 km | FAA | 2015-AGL-15198-OE | 41.799252 -88.236443 | 310.04 ft 94.5 m | | AT&T | EOLA, IL |
| 47 | 0.62 mi 0.99 km | FAA | 2016-AGL-6186-OE | 41.795139 -88.243446 | 49.87 ft 15.2 m | | COMMONWEALTH EDISON | AURORA, IL |
| 48 | 0.63 mi 1.02 km | FCC | 1304105 | 41.796944 -88.238083 | 194.88 ft 59.4 m | LTOWER | Scientel Tower Properties LLC | 245 East Eola Rd., Aurora, IL, 60502 |
| 49 | 0.63 mi 1.02 km | FAA | 2017-AGL-16340-OE | 41.796944 -88.238083 | 199.15 ft 60.7 m | | SCIENTEL SOLUTIONS | AURORA, IL |
| 50 | 0.95 mi 1.53 km | TC | 816870 | 41.8089 -88.2633 | 150 ft 45.72 m | MONOPOLE | Crown Castle International | ROUTE 1, 2700 COUNTY LINE FARMS, AURORA, IL,... |
| 51 | 0.95 mi 1.54 km | FCC | 1276067 | 41.808889 -88.263333 | 149.93 ft 45.7 m | TOWER | Crown Castle GT Company LLC | ROUTE 1, 2700 COUNTY LINE FARMS, AURORA, IL,... |
| 52 | 0.95 mi 1.54 km | FAA | 2006-AGL-1302-OE | 41.808887 -88.263336 | 153.87 ft 46.9 m | | CROWN CASTLE | NORTH AURORA, IL |
| 53 | 0.95 mi 1.54 km | FAA | 2020-AGL-22831-OE | 41.808887 -88.263336 | 158.14 ft 48.2 m | | CROWN CASTLE | BATAVIA, IL |
| 54 | 0.95 mi 1.54 km | FAA | 2021-AGL-28748-OE | 41.808887 -88.263336 | 158.14 ft 48.2 m | | CROWN CASTLE (MG) | BATAVIA, IL |
| 55 | 0.95 mi 1.54 km | FAA | 2010-AGL-5064-OE | 41.808887 -88.263336 | 158.14 ft 48.2 m | | CROWN CASTLE USA, INC | AURORA, IL |
| 56 | 0.96 mi 1.54 km | FAA | 98-AGL-1931-OE | 41.808918 -88.26339 | 89.9 ft 27.4 m | | SPRINT PCS | NORTH AURORA, IL |
| 57 | 0.96 mi 1.54 km | FAA | 94-AGL-1838-OE | 41.808918 -88.26339 | 153.87 ft 46.9 m | | CHICAGO SMSA LP | NORTH AURORA, IL |
| 58 | 0.96 mi 1.55 km | FAA | 2011-AGL-4440-OE | 41.808945 -88.263474 | 89.9 ft 27.4 m | | CROWN CASTLE USA FOR SPRINT | N. AURORA, IL |
| 59 | 0.96 mi 1.55 km | TC | 875611 | 41.8089 -88.2635 | 76 ft 23.16 m | MONOPOLE | Crown Castle International | 2700 COUNTY LINE FARMS, ROUTE, AURORA, IL,... |