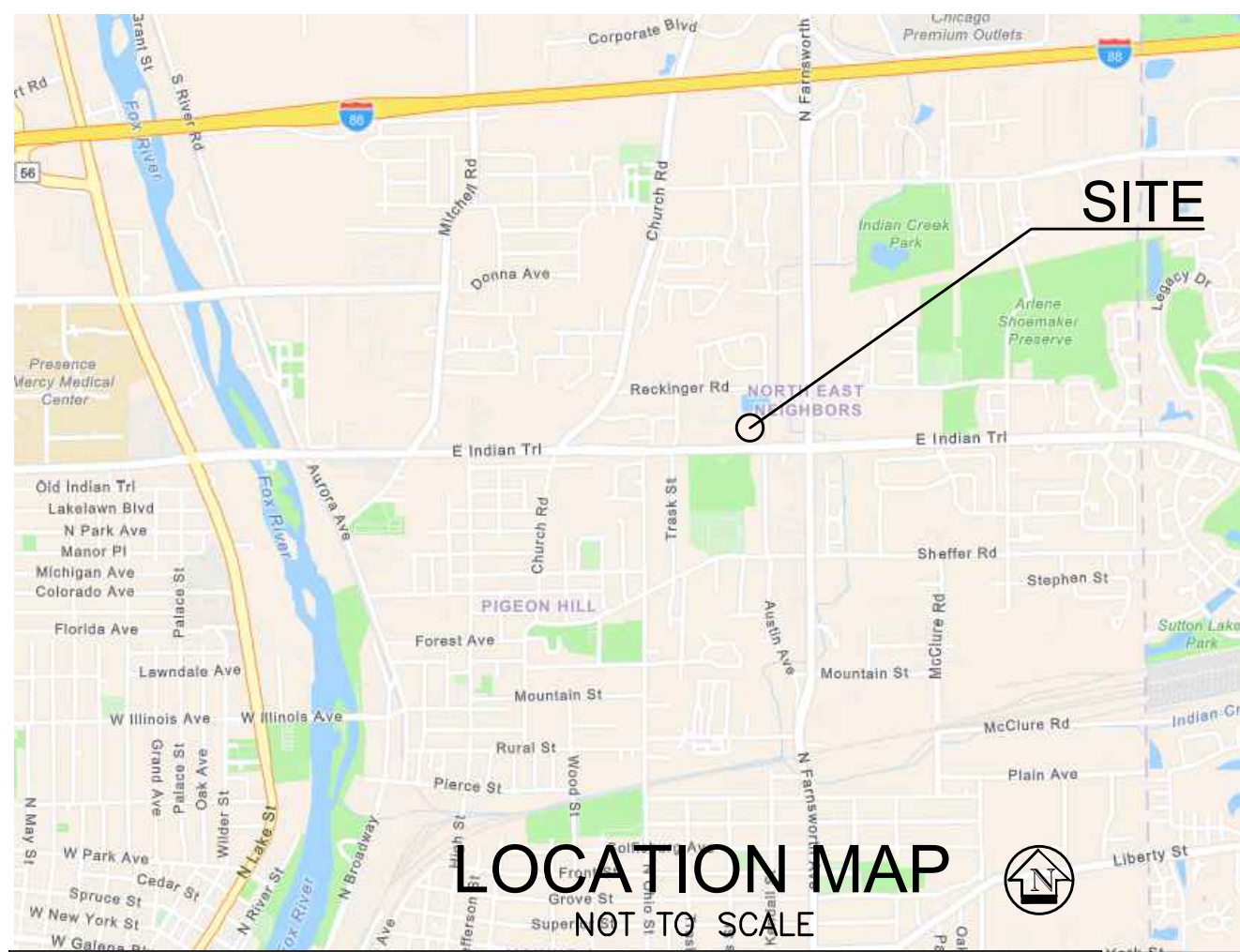


# FINAL PLAN FOR AURORA PUBLIC SAFETY CAMPUS SUBDIVISION, LOT I



TRAINING AND SUPPORT BUILDING  
FF = 730.5

### PROPOSED UTILITY LEGEND

- <—<— PROPOSED SANITARY SEWER
- <—<— PROPOSED STORM SEWER
- W— PROPOSED WATERMAIN
- INLET
- STORM MANHOLE/CATCH BASIN
- SANITARY MANHOLE
- CLEANOUT
- WATER VALVE VAULT
- FIRE HYDRANT

### PAVEMENT LEGEND

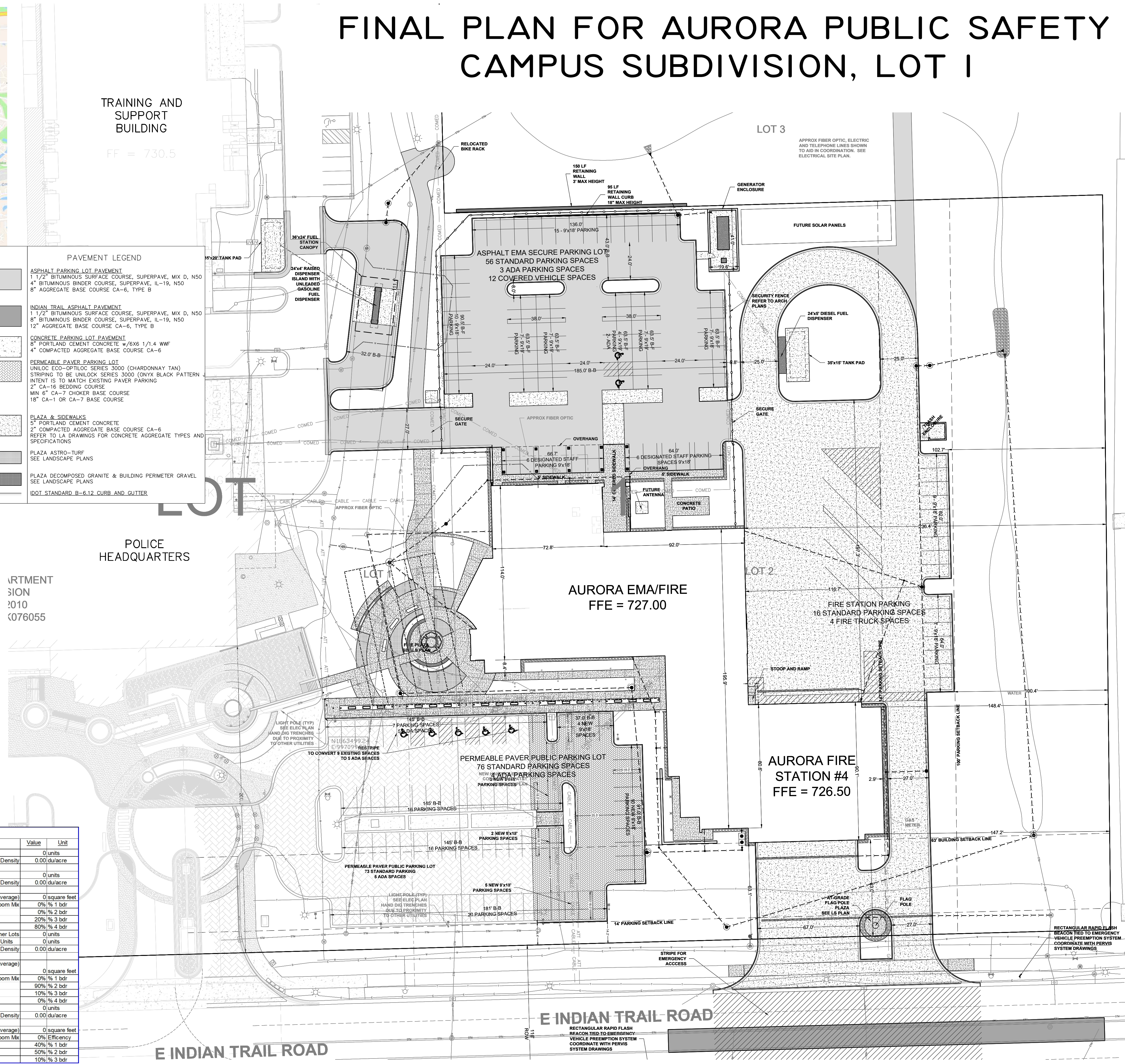
- ASPHALT PARKING LOT PAVEMENT
  - 1 1/2" BITUMINOUS SURFACE COURSE, SUPERPAVE, MIX D, N50
  - 4" BITUMINOUS BINDER COURSE, SUPERPAVE, IL-19, N50
  - 8" AGGREGATE BASE COURSE CA-6, TYPE B
- INDIAN TRAIL ASPHALT PAVEMENT
  - 1 1/2" BITUMINOUS SURFACE COURSE, SUPERPAVE, MIX D, N50
  - 8" BITUMINOUS BINDER COURSE, SUPERPAVE, IL-19, N50
  - 12" AGGREGATE BASE COURSE CA-6, TYPE B
- CONCRETE PARKING LOT PAVEMENT
  - 8" PORTLAND CEMENT CONCRETE w/6X6 1/4 W/F
  - 4" COMPACTED AGGREGATE BASE COURSE CA-6
- PERMEABLE PAVEMENT PARKING LOT
  - UNICOR ECO-OPTILOC SERIES 3000 (CHARDONNAY TAN)
  - STRIPING TO BE UNILOCK SERIES 3000 (ONYX BLACK PATTERN)
  - INTENT IS TO MATCH EXISTING PAVEMENT
  - 2" CA-16 BEDDING COURSE
  - MIN 6" CA-7 CHOKER BASE COURSE
  - 18" CA-1 OR CA-7 BASE COURSE
- PLAZA & SIDEWALKS
  - 5" PORTLAND CEMENT CONCRETE
  - 2" COMPACTED AGGREGATE BASE COURSE CA-6
  - REFER TO LA DRAWINGS FOR CONCRETE AGGREGATE TYPES AND SPECIFICATIONS
- PLAZA ASTRO-TURF
  - SEE LANDSCAPE PLANS
- PLAZA DECOMPOSED GRANITE & BUILDING PERIMETER GRAVEL
  - SEE LANDSCAPE PLANS
- IDOT STANDARD B-6.12 CURB AND GUTTER

### LEGEND & ABBREVIATIONS:

- UTILITY POLE
- LIGHT POLE
- TRANSFORMER
- UTILITY PEDESTAL
- TRAFFIC SIGNAL
- SIGNAL VAULT
- UTILITY VAULT
- GAS VALVE
- WATER VALVE
- ELECTRIC METER
- GAS METER
- FIRE HYDRANT
- AUTO SPRINKLER
- MONITORING WELL
- GROUND LIGHT
- BOLLARD
- B-BOX
- SIGN
- FLAG POLE

### SURVEY LEGEND

- P.O.C. POINT OF COMMENCEMENT
- P.O.B. POINT OF BEGINNING
- DEGREES
- FEET/MINUTES
- INCHES/SECONDS
- S.F. SQUARE FEET
- (REC) RECORD BEARING/DISTANCE
- TF TOP OF FOUNDATION
- FF FINISHED FLOOR
- TP TOP OF PIPE
- B.S.L. BUILDING SETBACK LINE
- P.U.E. PUBLIC UTILITY EASEMENT
- D.E. DRAINAGE EASEMENT
- L ARC LENGTH
- R RADIUS LENGTH
- C CHORD LENGTH
- CB CHORD BEARING
- OMP CORRUGATED METAL PIPE
- CONCRETE SURFACE



Development Data Table: Final Plan			
Description	Value	Unit	Description
a) Tax/Parcel Identification Number(s) (PINs): 15-11-478-014			j) Total Number of Residential Dwelling Units i. Gross Density
			0 units 0.00 du/acre
b) Proposed land use(s): Municipal Office Building and COA Fire Station, EMA Center			k) Number of Single Family Dwelling Units i. Gross Density
			0 units 0.00 du/acre
c) Total Property Size 19.6915519 Acres			iii. Unit Square Footage (average) 0 square feet
857764 Square feet			0% % 1 bdr
540144 Square feet			0% % 2 bdr
63% Percent			20% % 3 bdr
317620 Square feet			80% % 4 bdr
37% Percent			l) Number of Single Family Corner Lots 0 units
0 Acres			0 units 0.00 du/acre
0 Acres			m) Number of Multifamily Dwelling Units i. Gross Density
			0 units 0.00 du/acre
			iii. Unit Square Footage (average) 0 square feet
			0% % 1 bdr
			90% % 2 bdr
			10% % 3 bdr
			0% % 4 bdr
			n) Number of buildings i. Number of stories 2 stories
			0 square feet 0% Efficiency
			ii. Building Square Footage (typical) 36200 square feet
			0 square feet 40% % 1 bdr
			0 square feet 50% % 2 bdr
			0 square feet 10% % 3 bdr

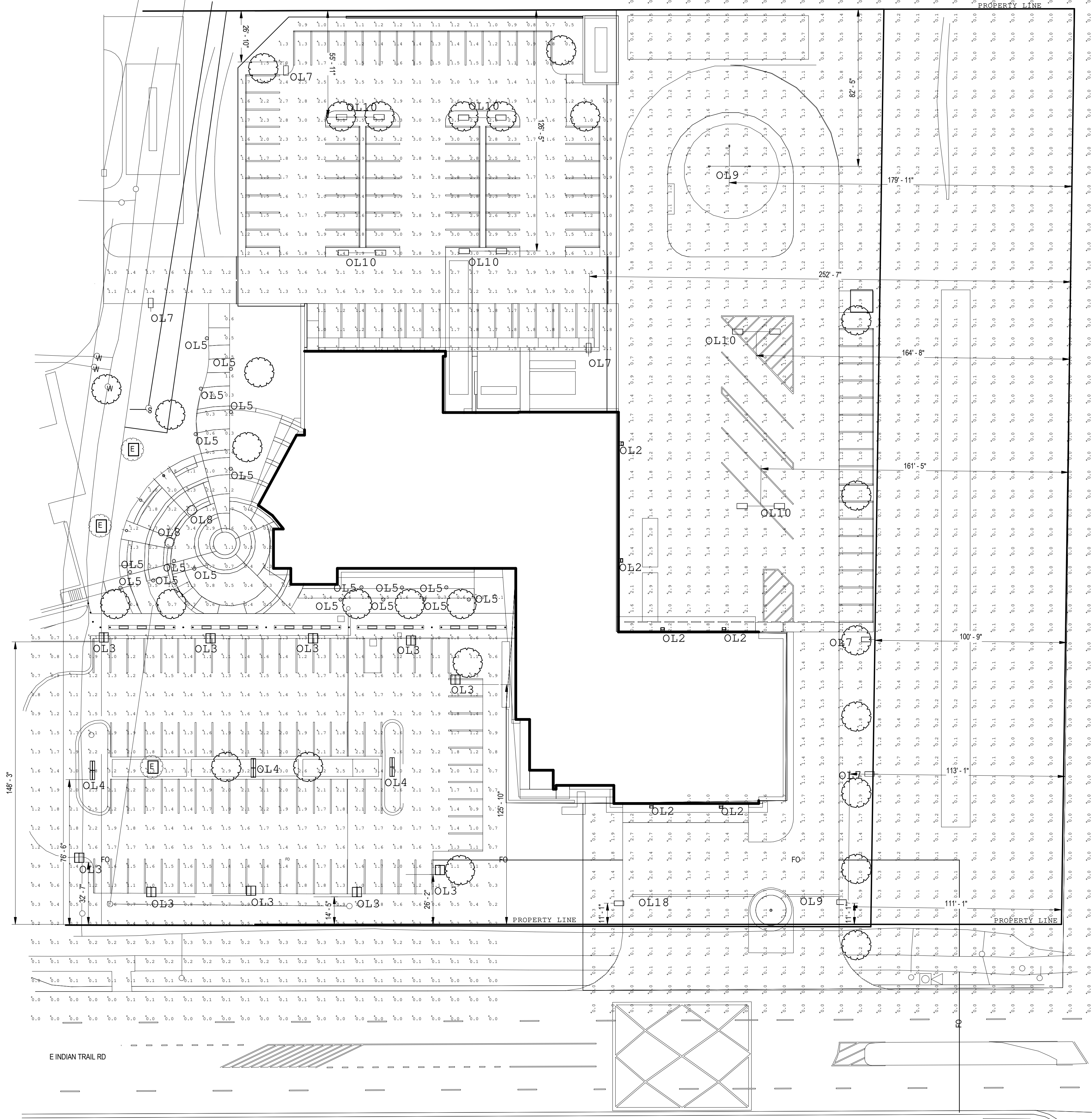
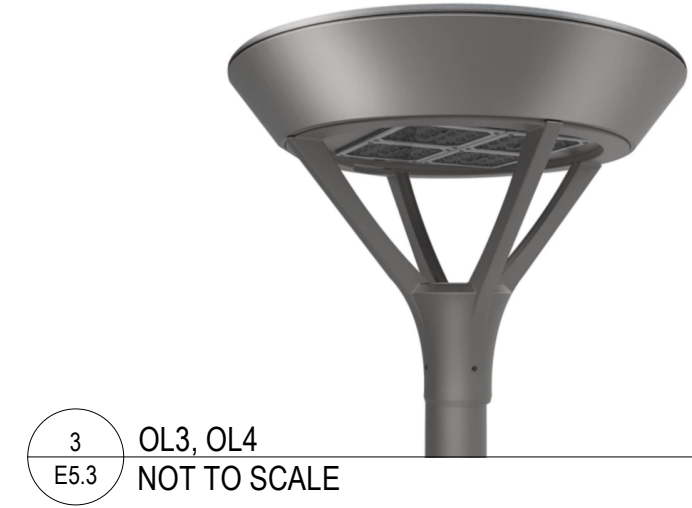
**CORDOGAN CLARK**  
 ARCHITECTURE • ENGINEERING • CONSTRUCTION  
**AURORA**  
 ILLINOIS  
**CITY OF AURORA**  
**FIRE DEPARTMENT HEADQUARTERS**  
 1200 E INDIAN TRAIL RD., AURORA, IL, 60505

COPYRIGHT © C. CORDOGAN CLARK & ASSOCIATES, INC.  
 CC JOB NUMBER 241061  
 DATE 2025.02.27  
 REVISIONS:  
 # 1 Description Addendum 2 Date 2-21

DRAWING TITLE:  
**FINAL PLAN**  
 ZONING SUBMITTAL

Luminaire Schedule Symbol	Qty	Label	Arrangement	Description	Tag	LLF	Luminaire Lumens	Luminaire Watts	Total Watts
[Symbol]	1	GLEON-SA2A-740-U-SLL	Single	GLEON-SA2A-740-U-SLL	OL18	0.900	8380	66	66
[Symbol]	1	GLEON-SA2A-740-U-SLR	Single	GLEON-SA2A-740-U-SLR	OL9	0.900	8380	66	66
[Symbol]	3	GLEON-SA2A-740-U-T4W_1	Single	GLEON-SA2A-740-U-T4W	OL9	0.900	9468	66	198
[Symbol]	5	GLEON-SA2A-740-U-T3R	Single	GLEON-SA2A-740-U-T3R	OL7	0.900	9749	66	330
[Symbol]	2	ARB-B2-LED-D1-T5	Single	ARB-B2-LED-D1-T5	OL8	0.900	4529	41	82
[Symbol]	6	MSA-SA1A-840-U-T4FT_6699lm	Single	MSA-SA1A-840-U-T4FT	OL4	0.900	6700	66	396
[Symbol]	10	MSA-SA1A-840-U-T4FT_3406lm	Single	MSA-SA1A-840-U-T4FT	OL3	0.900	3407	34	340
[Symbol]	18	1900-OA-XX-12LED4025-UNV-BZ	Single	1900-OA-XX-12LED4025-UNV-BZ	OL5	0.900	245	13.9	250.2
[Symbol]	6	WDGEZ LED P3 40K 80CRI TFTM	Single	WDGEZ LED P3 40K 80CRI TFTM	OL2	0.900	3166	32.1375	192.825
[Symbol]	12	GLEON-SA2A-740-U-T4W	Single	GLEON-SA2A-740-U-T4W	OL10	0.900	9468	66	792

Label	CalcType	Units	Avg	Max	Min	Avg/Min	Max/Min
EOC ENTRANCE	Illuminance	Fc	1.36	3.9	0.2	6.80	19.50
EOC SOUTH PARKING LOT	Illuminance	Fc	1.13	3.4	0.0	N.A.	N.A.
FIRE STATION EAST PARKING LOT	Illuminance	Fc	0.68	3.6	0.0	N.A.	N.A.
NORTH PARKING LOT EOC	Illuminance	Fc	1.90	3.5	0.5	3.80	7.00
PEDESTRIAN WALK WAY	Illuminance	Fc	1.18	2.6	0.1	11.80	26.00



1 SITE PLAN PHOTOMETRICS  
1" = 30'-0"

REVISIONS:

#	Description	Date