



PLANS FOR THE PROPOSED

BRIDGEPORT LN STORM SEWER INSTALLATION

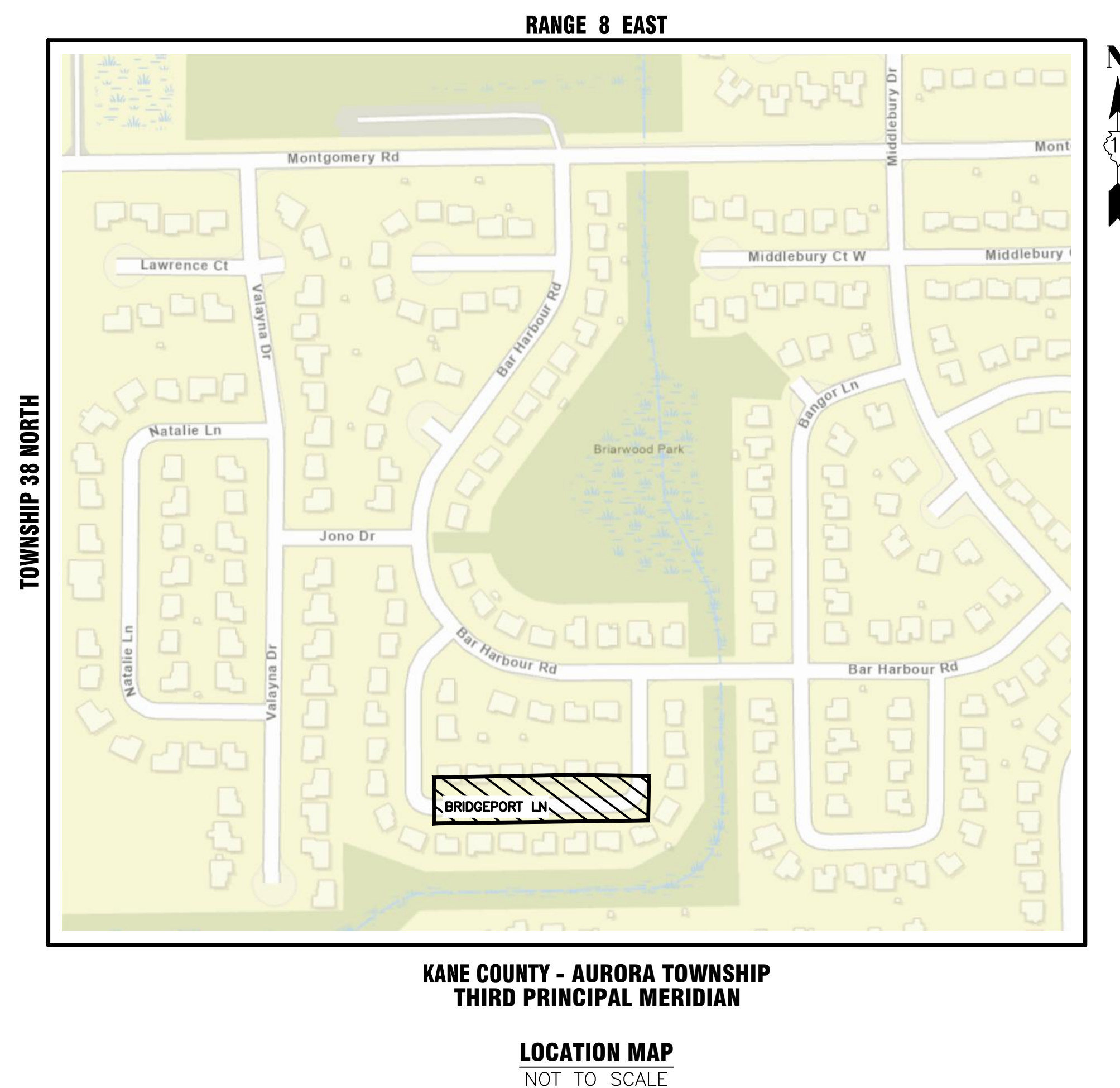
JULY 2025

GENERALLY LOCATED IN THE S. 1/2 OF SEC 32, T38N, R9E

INDEX OF SHEETS

- | | |
|-----|------------------|
| 1 | COVER SHEET |
| 2 | PLAN AND PROFILE |
| 3-5 | STANDARD DETAILS |

LEGEND		
	EXISTING	PROPOSED
SANITARY SEWER	—) —	—) —
STORM SEWER	— > —	— > —
WATER MAIN	— W —	— W —
FORCE MAIN	— FM —	— FM —
UNDERDRAIN	— UD —	— UD —
OVERHEAD LINE	— OH —	— OH —
CABLE TV LINE	— CATV —	— CATV —
GAS LINE	— GAS —	— GAS —
TELEPHONE LINE	— T —	— T —
ELECTRIC LINE	— E —	— E —
FENCE	— X —	— X —
MAJOR CONTOUR	— — —	— — —
MINOR CONTOUR	— — —	— — —
HIGH WATER LEVEL	— HWL —	— HWL —
NORMAL WATER LEVEL	— NWL —	— NWL —
PAVEMENT FLOW DIRECTION	~ 882.6	~ 882.6
SPOT ELEVATION	X 882.6 TC	X 882.6 TC
TOP OF CURB ELEVATION	X 882.6 T/F	X 882.6 T/F
TOP OF FOUNDATION ELEVATION	X 882.6 FL	X 882.6 FL
GUTTER ELEVATION	X 882.6 P	X 882.6 P
PAVEMENT ELEVATION	X 882.6 P	X 882.6 P
EDGE OF PAVEMENT	=====	=====
CURB AND GUTTER	=====	=====
RIGHT-OF-WAY	— — —	— — —
SANITARY MANHOLE	⊙	⊙
SANITARY CLEANOUT	⊙	⊙
STORM MANHOLE	⊙	⊙
CATCH BASIN	⊙	⊙
INLET	⊙	⊙
FLARED END SECTION	⊙	⊙
FIRE HYDRANT	⊙	⊙
VALVE VAULT	⊙	⊙
VALVE BOX	⊙	⊙
STREET LIGHT	⊙	⊙
POWER POLE	⊙	⊙
STREET SIGN	⊙	⊙
ELECTRIC BOX	⊙	⊙
TELEPHONE BOX	⊙	⊙
TELEPHONE MANHOLE	⊙	⊙
B-BOX	⊙	⊙
GAS VALVE	⊙	⊙
TRAFFIC HANDHOLE	⊙	⊙
ELECTRIC HANDHOLE	⊙	⊙
TREE W/ DIAMETER	⊙	⊙
MAILBOX	⊙	⊙
STRUCTURE TO BE REMOVED	⊙	⊙
PLUG EXISTING PIPE	⊙	⊙
UTILITY CROSSING	⊙	⊙
EXPLORATORY EXCAVATION LOCATION	⊙	⊙
SANITARY MANHOLE REHABILITATION NUMBER	⊙	⊙
SOIL BORING LOCATION WITH IDENTIFICATION NUMBER & ELEVATION	⊙	⊙



J.U.L.I.E.
JOINT UTILITY LOCATION INFORMATION FOR EXCAVATION
811 OR 1-800-892-0123

CONSTRUCTION AND MAINTENANCE TO BE IN
ACCORDANCE WITH ALL APPLICABLE REGULATORY
REQUIREMENTS AND STANDARDS

PRINTED BY THE AUTHORITY
OF THE CITY OF AURORA

PLANS PREPARED BY:

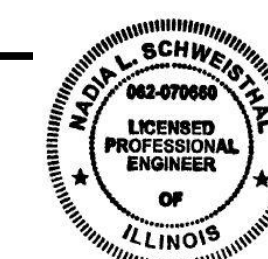
CITY OF AURORA

DEPARTMENT OF PUBLIC WORKS - ENGINEERING DIVISION
77 S. BROADWAY AVE, AURORA, IL 60505

PHONE: 630-256-3200 FAX: 630-256-3229

REVISIONS:

DESIGNED BY: NS	DRAWN BY: AHB	CHECKED BY: KTM	APPROVED BY: KTM	HORIZ. SCALE: N/A	VERT. SCALE: N/A	DATE: JULY 2025
-----------------	---------------	-----------------	------------------	-------------------	------------------	-----------------



Nadia L. Schweisthal

STAMP

ILLINOIS REGISTERED PROFESSIONAL

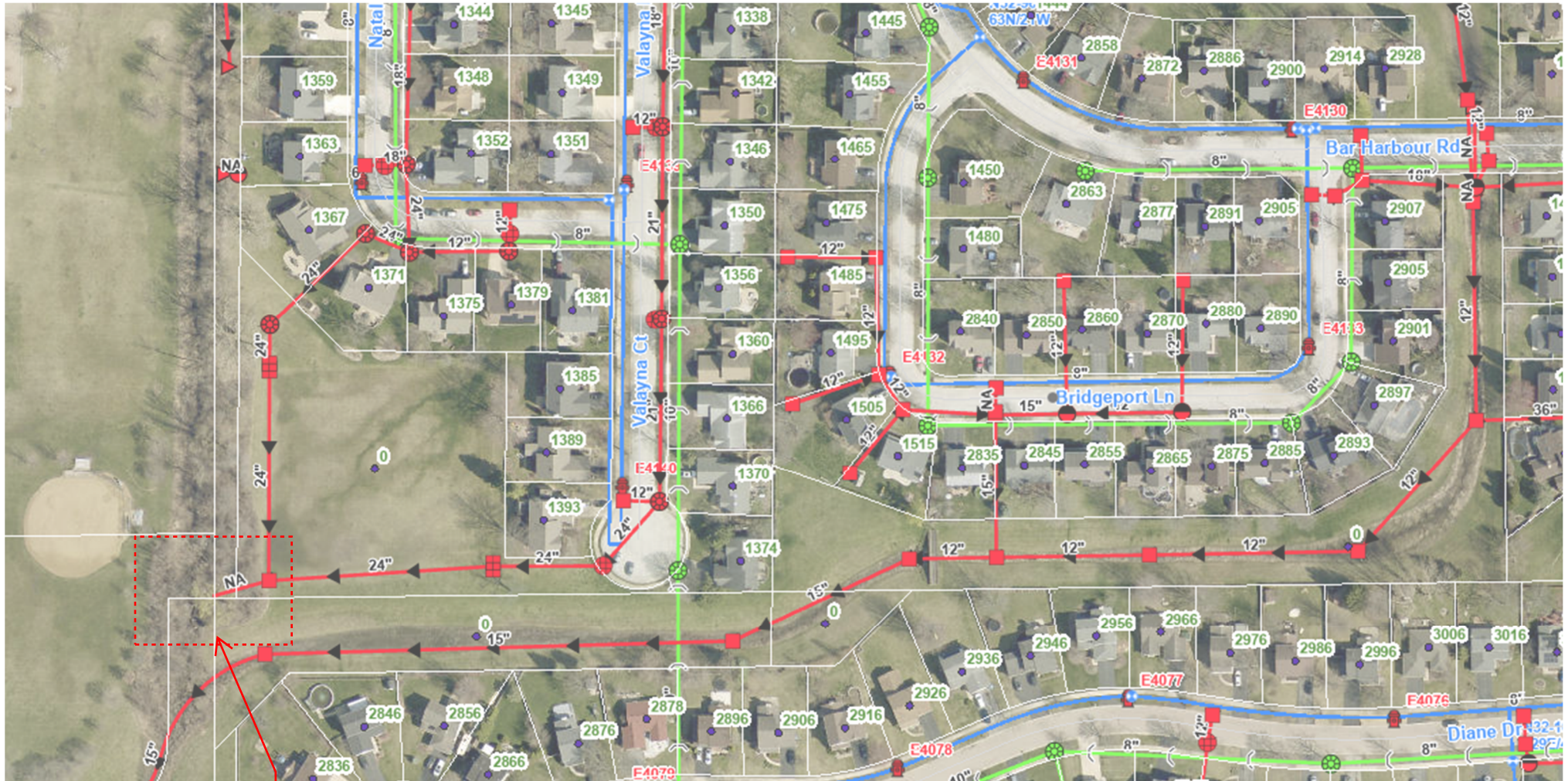
ENGINEER No. 062.070660

LICENSE EXPIRES NOVEMBER 30, 2025

7/2/2025

DATE

HUNTER'S RIDGE STORM SEWER EXTENSION



STORM SEWER
EXTENSION AREA