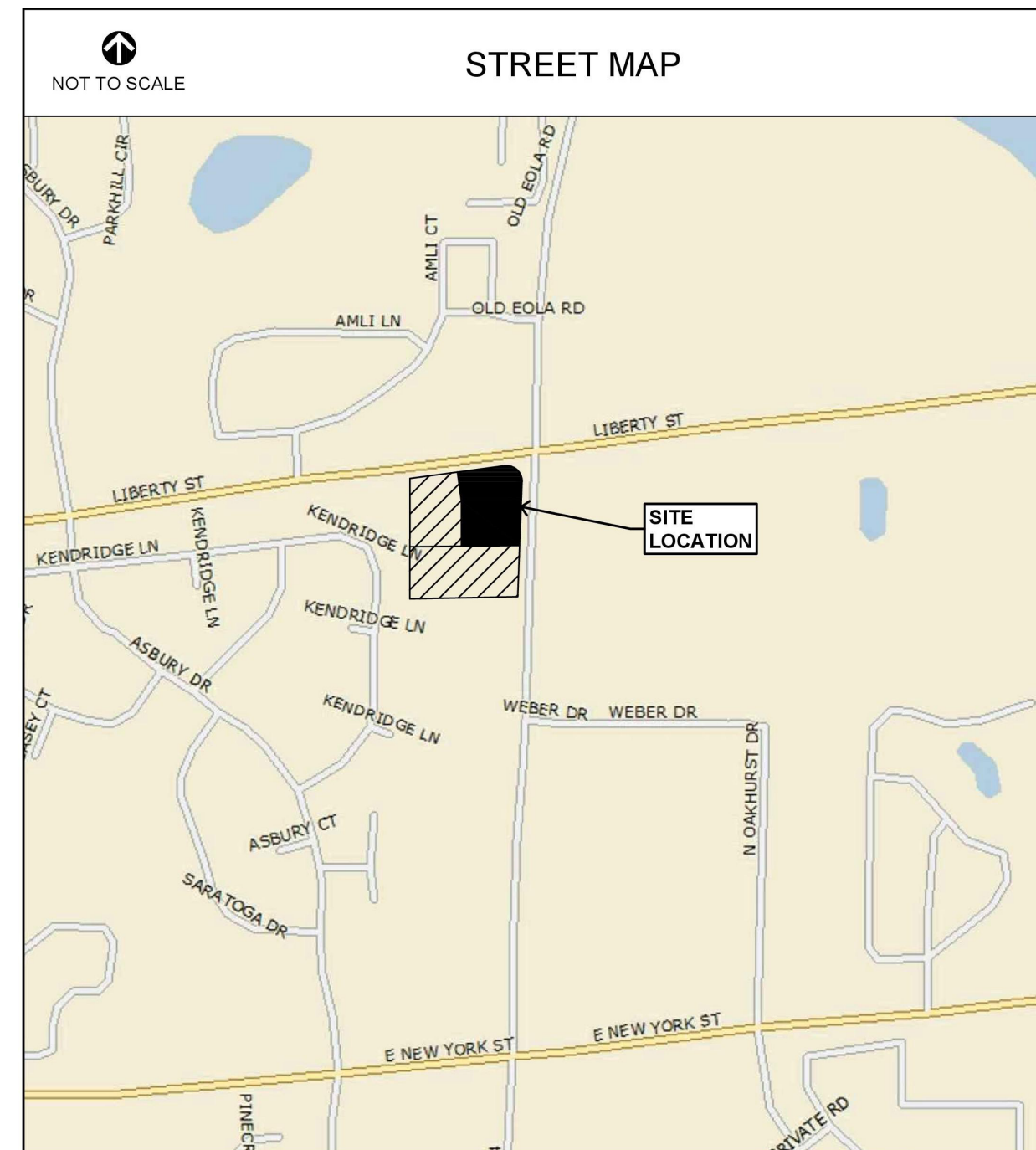
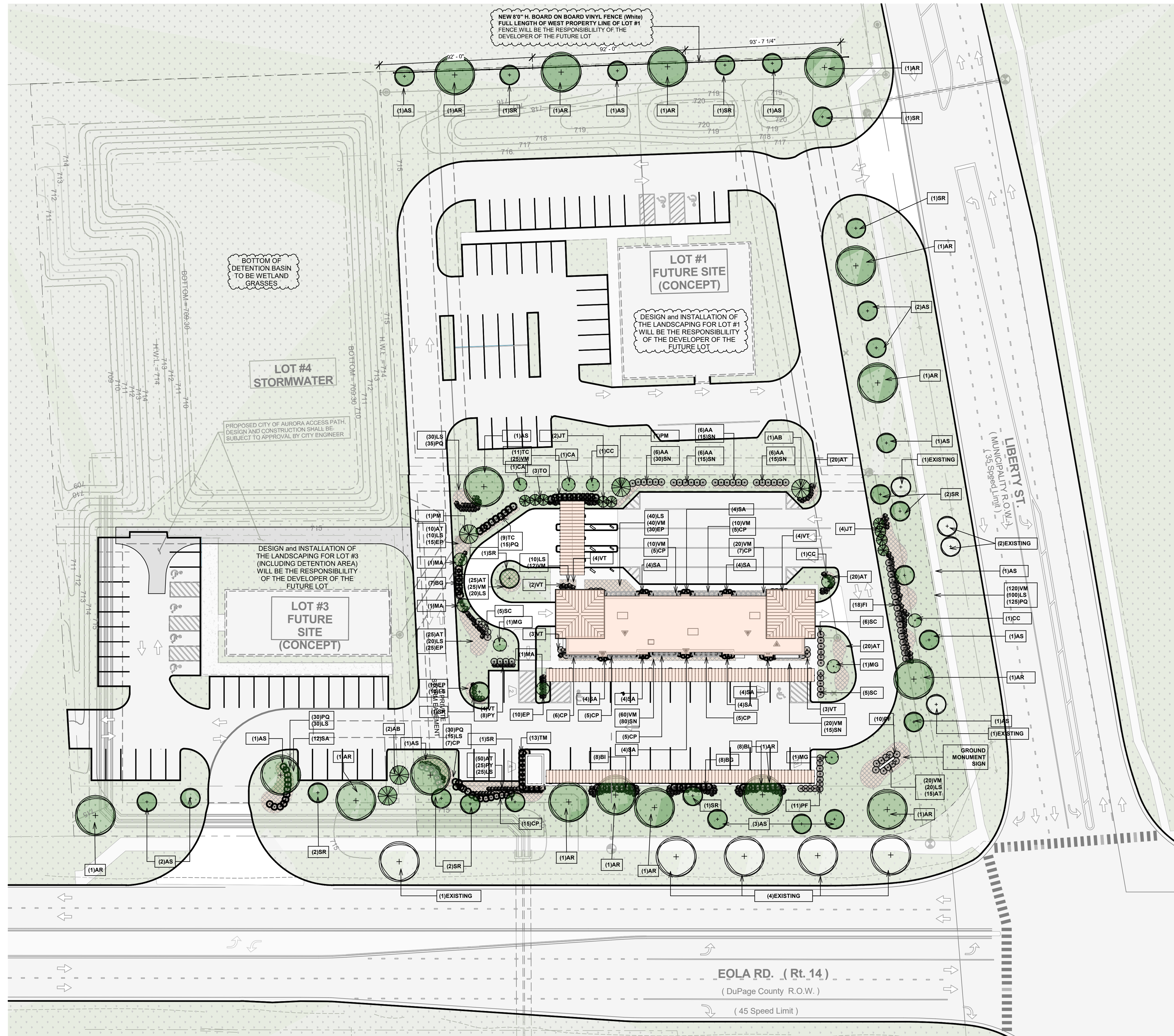


Landscape Implementation Plan for Lot at SW corner of Liberty St. & Eola Rd.



LOCATION MAP



SITE LANDSCAPE PLAN
SCALE: 1" = 30'-0"
N

NERO ARCHITECTS

6400 N NORTHWEST HWY
SUITE 4
CHICAGO, IL 60631
TEL: 847.825.9400

PROJECT # 2219
DATE: 01/17/22

DESIGN FIRM #: 184.003719-0001
EXP: 04.30.23

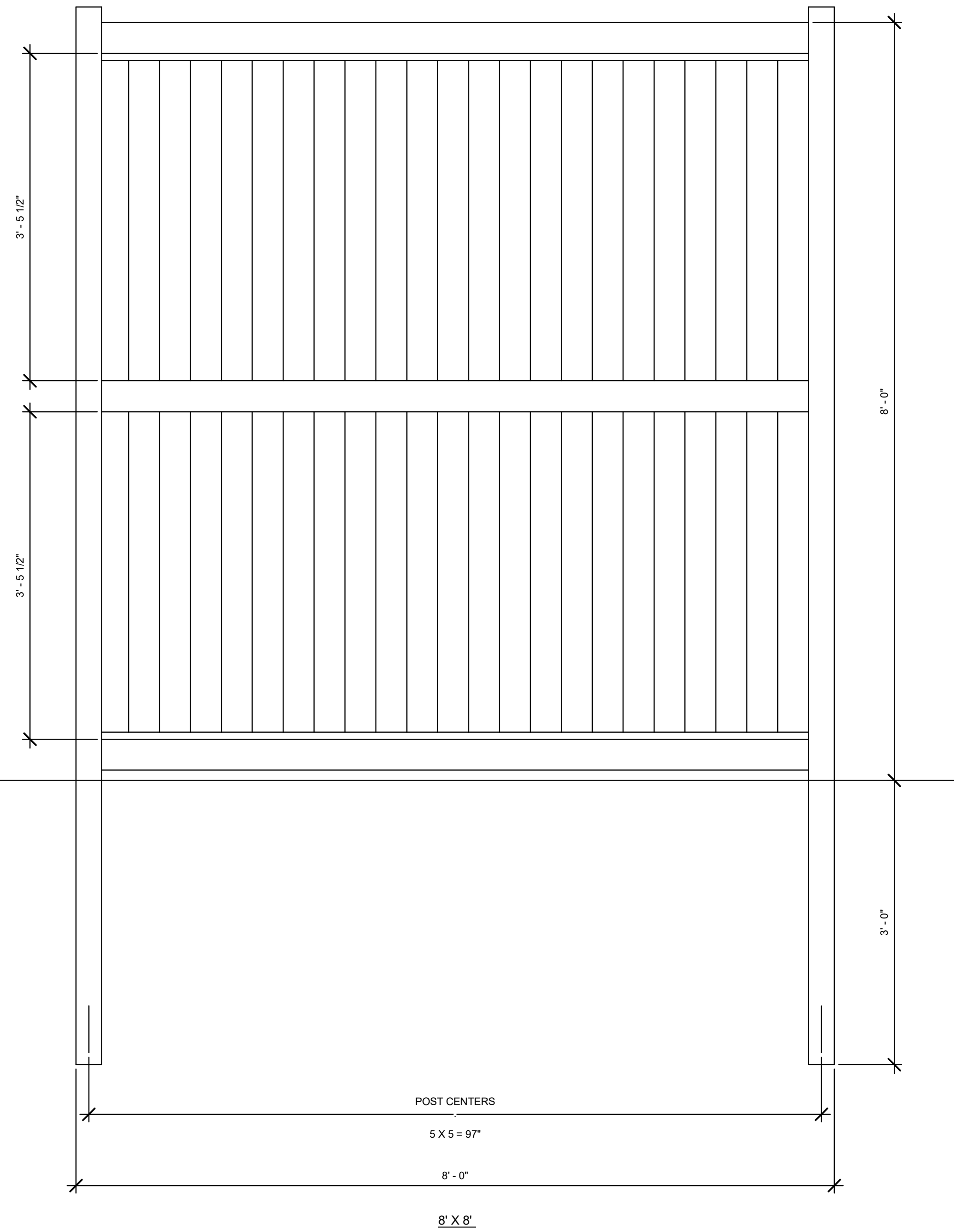
NEW AUTOMATED CARWASH FACILITY
"Eco Wave"
LIBERTY ST & EOLA RD
AURORA, IL 60502
Landscape Implementation Plan

DATE	REVISIONS
08.29.23	PREL. ENG. REVISION
08.01.23	PREL. ENG. REVISION
05.25.23	PREL. ENG. REVISION
01.31.23	P & Z REVIEW
01/17/21	Issued to Zoning COMMITTEE
10.11.22	ZONING REVIEW

DRAWN BY: RAM
APPROVED BY: GCN / MAM
SCALE: AS NOTED
DESCRIPTION: LANDSCAPE PLAN

SHEET NO. Z-1.1

Landscape Implementation Plan for Lot at SW corner of Liberty St. & Eola Rd.



2-12 PRIVACY FENCE DETAIL

SCALE: 1" = 1'-0"
NEW 8" H. BOARD ON BOARD VINYL FENCE (White)
FULL LENGTH OF WEST PROPERTY LINE OF LOT #1

NOTES:
- EXISTING TREE CONDITIONS AND SIZES TO BE SHOWN (TBD).
- SHRUBS SHALL NOT EXCEED A MATURE HEIGHT OF THIRTY INCHES (30") ABOVE PAVEMENT ON LANDSCAPE ISLANDS AT THE END OF PARKING ROWS.

WITHIN THE PLANTING AREA MAKE SURE THAT THE FOLLOWING GUIDELINES ARE MET:

- TREES DO NOT CONFLICT WITH EXISTING UTILITIES AND OVERHEAD WIRES
- MINIMUM DISTANCE OF 50 FEET FROM INTERSECTION
- MINIMUM DISTANCE OF 100 FEET FROM TRAFFIC SIGNAL
- TREES ARE LOCATED A MINIMUM OF 25 FEET (SMALL TREES), OR 35 FEET (MEDIUM/LARGE TREES) FROM ANY OTHER TREE
- TREES ARE AT LEAST 25 FEET FROM AN OVERHEAD LIGHT, AND 10 FEET FROM FIRE HYDRANT OR UTILITY POLE
- ADEQUATE ROOT ZONE AREA FOR A TREE TO GROW HEALTHY (6' X 6')
- 6 FEET FROM ANY DRIVEWAY OR V-BOX
- PARKWAY MUST BE AT LEAST 6 FEET WIDE
- TREES CANNOT BE PLANTED IN THE SAME LOCATION WHERE A PREVIOUS TREE WAS REMOVED.
- WHERE IRRIGATION SYSTEMS ARE INSTALLED IN THE PARKWAY, THE CITY OF AURORA OR ITS LANDSCAPE CONTRACTOR WILL NOT BE RESPONSIBLE FOR ANY DAMAGE CAUSED BY TREE PLANTING.
- PLANT NO MORE THAN 30% OF A FAMILY
- PLANT NO MORE THAN 20% OF A GENUS
- PLANT NO MORE THAN 10% OF A SPECIES

Planting Schedule. LOT #1 per City of Aurora Landscape Codes

LEGEND	QUANT.	BOTANICAL NAME	COMMON NAME	SIZE	NOTES/SPECIAL CONDITIONS
CANOPY / STREET TREES (Min. Size at planting 2.5' Caliper) - 16 total					
AR	6	Acer Rubrum	Red Maple	2.5' caliper / 8' ht	
SR	4	Syringa reticulata ssp. reticulata	Summer Snow Japanese Tree Lilac	2.5' caliper / 8' ht	
AS	6	Amelanchier x grandiflora	Apple Serviceberry	6' ht	

Landscape Data Table: CTEs Provided			
CTE Value	Count Provided	Total CTEs Provided	
Canopy Trees	1	16	16
Evergreen Trees	1/3	0	0
Understory Trees	1/3	0	0
Deciduous Shrubs	1/20	0	0
Evergreen Shrubs	1/20	0	0
Total:	16	16	16

Planting Schedule. LOT #2 per City of Aurora Landscape Codes

LEGEND	QUANT.	BOTANICAL NAME	COMMON NAME	SIZE	NOTES/SPECIAL CONDITIONS
CANOPY / STREET TREES (Min. Size at planting 2.5' Caliper) - 30 total					
AR	6	Acer Rubrum	Red Maple	2.5' caliper / 8' ht	
SR	7	Syringa reticulata ssp. reticulata	Summer Snow Japanese Tree Lilac	2.5' caliper / 8' ht	
AS	6	Amelanchier x grandiflora	Apple Serviceberry	2.5' caliper / 8' ht	
EXISTING	9	TBD			Verify existing condition and species of trees
UNDERSTORY TREES (Min. Size at planting 6' hgt. or 2' Caliper) - 11 total					
CC	3	Cercis canadensis	Redbud	6' ht	
CA	2	Cornus alternifolia	Pagoda Dogwood	6' ht	
MG	3	Magnolia stellata	Star Magnolia	6' ht	
MA	3	Magnolia x 'Am'	Ann Magnolia	6' ht	

EVERGREEN TREES (Min. Size at planting 6' hgt. - 12 total)					
AB	1	Abies balsamea	Balsam Fir	6' ht.	
PM	2	Picea mariana	Black Spruce	6' ht	
TO	3	Thuja occidentalis	White Cedar	6' ht	mature height 8'-12'
JT	6	Juniperus virginiana 'Taylor'	Taylor Juniper	6' ht	mature height 18'

EVERGREEN SHRUBS (All Hedges to be maintained and kept below @ max. 4'-0" tall) - 64 total					
TC	20	Taxus canadensis	Canada Yew	30' spr. / 24' ht	
BI	16	Buxus sinica var. insularis 'Wintergreen'	Wintergreen Boxwood	30' spr. / 24' ht	
BG	15	Buxus x 'Green Velvet'	Green Velvet Boxwood	30' spr. / 24' ht	
TM	13	Taxus x media 'Hicksii'	Hicks Yew Hedge	30' spr. / 24' ht	

DECIDUOUS SHRUBS (Min. Size at planting 18" to 24") - 99 total					
AA	24	Aronia melanocarp 'Morton'	Black Chokeberry		4' to 6' mature height
SC	16	Sambucus canadensis	Elderberry		
FI	18	Forsythia x intermedia	Border Forsythia		
VT	20	Viburnum trilobum	American Cranberry Bush		
PF	21	Potentilla fruticosa	Bush Cinquefoil	30' spr. / 24' ht	

ORNAMENTAL GRASS					
CP	60	Carex pensylvanica	Sedge	1ft spread	ground cover
SA	32	Sesleria autumnalis	Autumn Moor Grass		

PERENNIALS, GROUNDCOVERS - (plants in mulch beds)					
SN	170	Salvia nemorosa	New Dimension Blue	2" pot	perennials mature height 2'
VM	362	Vinca minor	Periwinkle	2" pot	perennials mature height 18"
PQ	205	Parthenocissus quinquefolia	Virginia Creeper	2" pot	ground cover
AT	185	Asclepias tuberosa	Butterfly Weed		perennials
EP	90	Echinacea purpurea	Purple Coneflower		perennials
PY	33	Pycnanthemum tenuifolium	Slender Mountain Mint		ground cover
LS	300	Liatris spicata	Blazing Star	18" spr.	perennials

Landscape Data Table: CTEs Provided			
CTE Value	Count Provided	Total CTEs Provided	
Canopy Trees	1	30	30
Evergreen Trees	1/3	12	4
Understory Trees	1/3	11	4
Deciduous Shrubs	1/20	99	5
Evergreen Shrubs	1/20	64	3
Total:	216	46	

Planting Schedule. LOT #3 per City of Aurora Landscape Codes

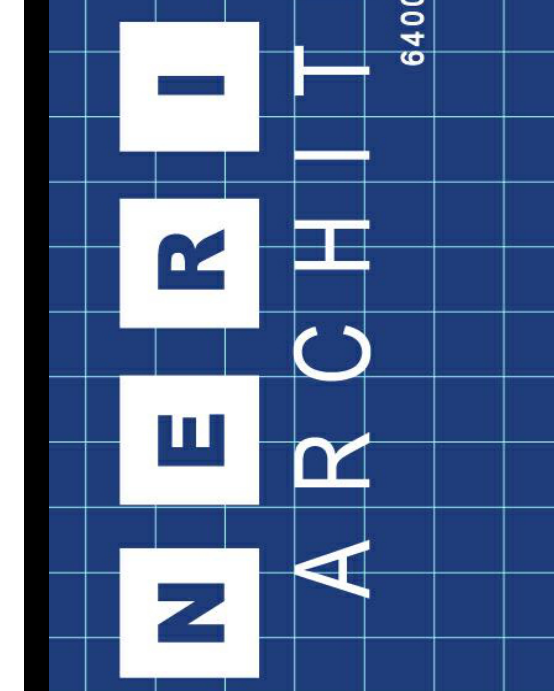
LEGEND	QUANT.	BOTANICAL NAME	COMMON NAME	SIZE	NOTES/SPECIAL CONDITIONS
CANOPY / STREET TREES (Min. Size at planting 2.5' Caliper) - 6 total					
AR	2	Acer Rubrum	Red Maple	2.5' caliper / 8' ht	
SR	1	Syringa reticulata ssp. reticulata	Summer Snow Japanese Tree Lilac	2.5' caliper / 8' ht	
AS	3	Amelanchier x grandiflora	Apple Serviceberry	6' ht	
EVERGREEN TREES (Min. Size at planting 6' hgt.) - 2 total					
AB	2	Abies balsamea	Balsam Fir	6' ht.	
ORNAMENTAL GRASS					
SA	12	Sesleria autumnalis	Autumn Moor Grass		
PERENNIALS, GROUNDCOVERS - (plants in mulch beds)					
PQ	30	Parthenocissus quinquefolia	Virginia Creeper	2" pot	ground cover
LS	30	Liatris spicata	Blazing Star	18" spr.	perennials

Landscape Data Table: CTEs Provided			
CTE Value	Count Provided	Total CTEs Provided	
Canopy Trees	1	6	6
Evergreen Trees	1/3	2	1
Understory Trees	1/3	0	0
Deciduous Shrubs	1/20	0	0
Evergreen Shrubs	1/20	0	0
Total:	8	7	

Landscape Data Table: Planting Material Key

Note: Symbols are blackline for proposed grayscale for existing

Canopy Trees (minimum size 2.5 caliper) Count:	21
Evergreen Trees (minimum size 6 feet) Count:	12
Understory Trees (minimum size 2.5 caliper or 8 feet if multi-stemmed) Count:	11
Evergreen Shrubs (minimum of 18 inches) Count:	64
Deciduous Shrubs (minimum of 18 inches) Count:	99
Ornamental Grasses Count:	134
Perennials Count:	1465
Annuals Count:	0
Groundcover Square Footage:	5185.58
Turf (Seeded) Square Footage:	8113.24
Turf (Sod) Square Footage:	18145.27
Native Prairie Planting Square Footage:	0
Native Wetland Planting Square Footage:	0
Existing trees	



PROJECT # 2219
DATE: 01/17/22



DESIGN FIRM #: 184.003719-0001
EXP: 04.30.23

NEW AUTOMATED CARWASH FACILITY
"Eco Wave"
LIBERTY ST & EOLA RD
AURORA, IL 60502
Landscape Implementation Plan

08.29.23	PREL. ENG. REVISION
08.01.23	PREL. ENG. REVISION
05.25.23	PREL. ENG. REVISION
01.31.23	P & Z REVIEW
10.24.22	ISSUED FOR PERMIT
10.11.22	ZONING REVIEW

REVISIONS
DRAWN BY: RAM
APPROVED BY: GCN / MAM
SCALE: AS NOTED
DESCRIPTION: LANDSCAPE DETAILS and SCHEDULES
SHEET NO.

Z-1.2