

ELEVATIONS

PROPOSED ADDITION TO MCCLEERY ELEMENTARY SCHOOL

At:
1002 W ILLINOIS AVE
AURORA, IL 60506

For WEST AURORA SCHOOL DISTRICT 129

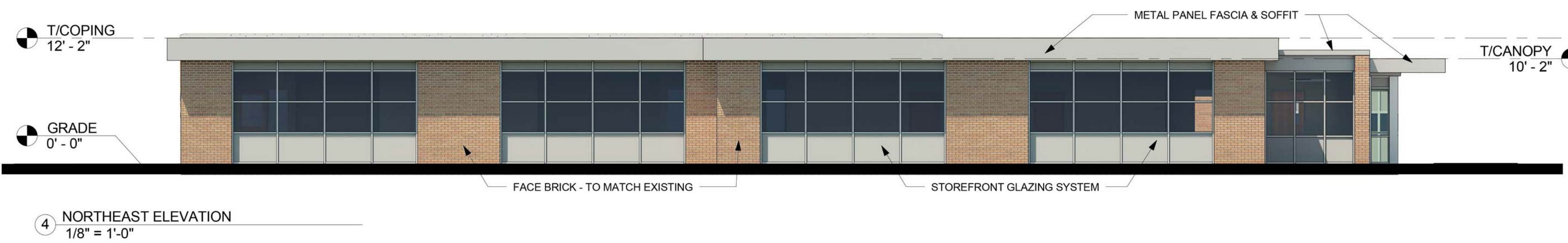
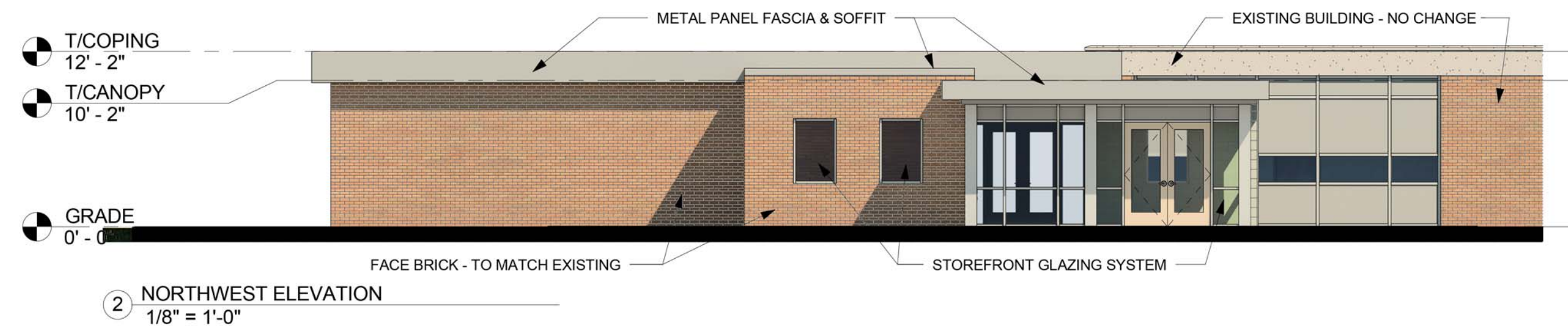
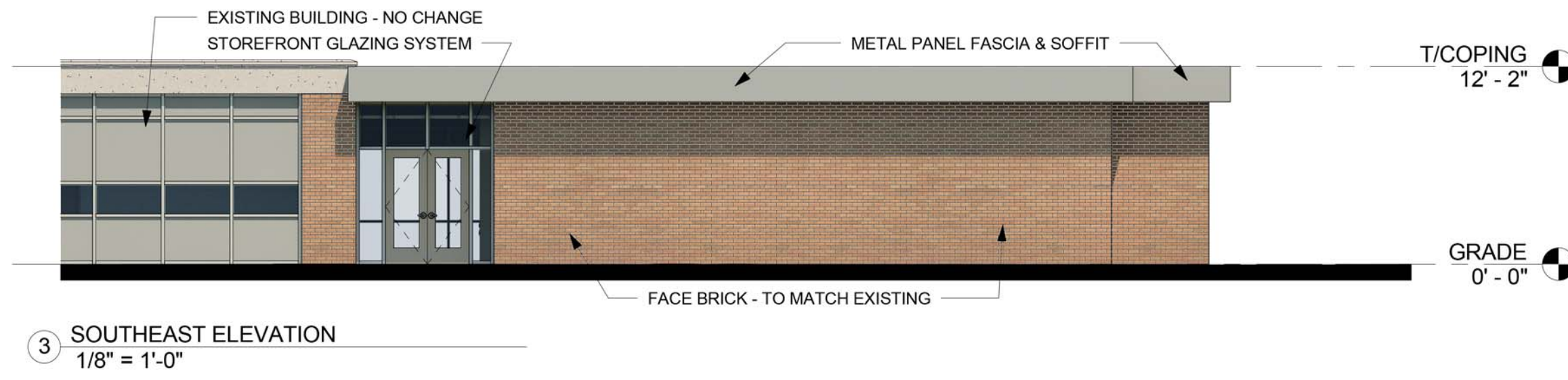
80 S RIVER ST
AURORA, IL 60506

Copyright 2015 StudioGC, Inc.

NO. ISSUED FOR: DATE
SPECIAL USE SUBMITTAL 08/12/15

BUILDING AND SIGNAGE ELEVATIONS

Project 15048



ELEVATION DATA TABLE: ELEVATIONS		
Description	Value	Unit
a) Building Height	12'-2"	feet
b) Grade Elevation	687	feet
c) Building Square Footage by Floor	50,625 (existing)	Square feet
	5,730 (addition)	Square feet
d) Building Square Footage	56,355 (total)	Square feet

SIGNAGE DATA TABLE: GROUND SIGNAGE				
Ground Sign #	Description	Value	Unit	
1	i) Length of street frontage- on which sign is located		feet	
	ii) Width of Sign Face		feet	
	iii) Height of Sign Face		feet	
	iv) Square Footage of Sign Face		Square feet	
	v) Height of Sign (over sidewalk)		feet	
	vi) Type of Sign			
	vii) Type of Sign Base			
	viii) Is there a digital display			
	If yes then - Location of Digital Display on the sign			
	Height of digital Display			
Width of Digital Display				
Square footage of Digital Display				
Percent of Digital Display Sign Coverage				

SIGNAGE DATA TABLE: WALLSIGNAGE			
Wall Sign #	Description	Value	Unit
1	i) Width of Facade- on which Sign is Located		feet
	ii) Height of Facade- on which Sign is Located		feet
	iii) Square Footage of Facade- on which Sign is Located		Square feet
	iv) Width of Sign Face		feet
	v) Height of Sign Face		feet
	vi) Square Footage of Sign Face		Square feet
	vii) Percent of Sign Coverage- Facade on which Sign is Located		Percent
	DOES NOT APPLY		