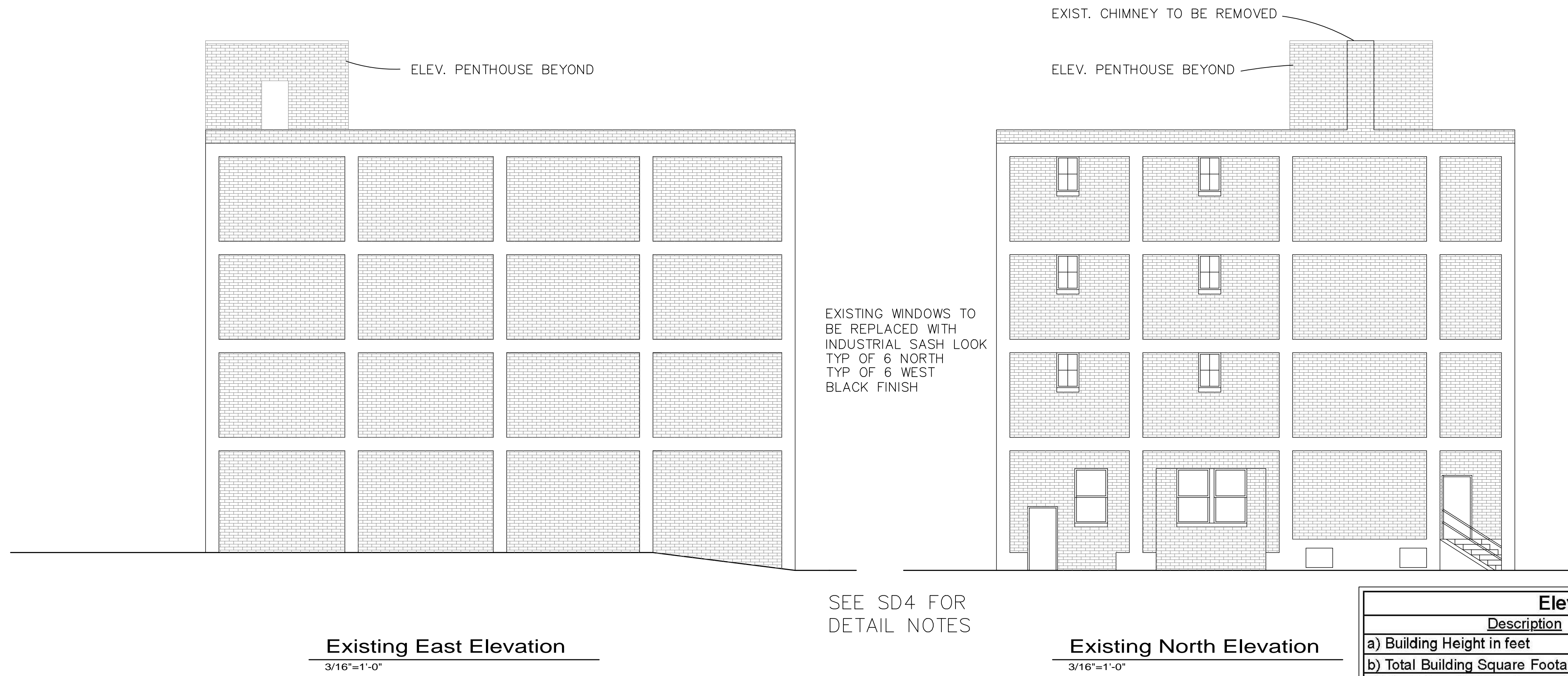
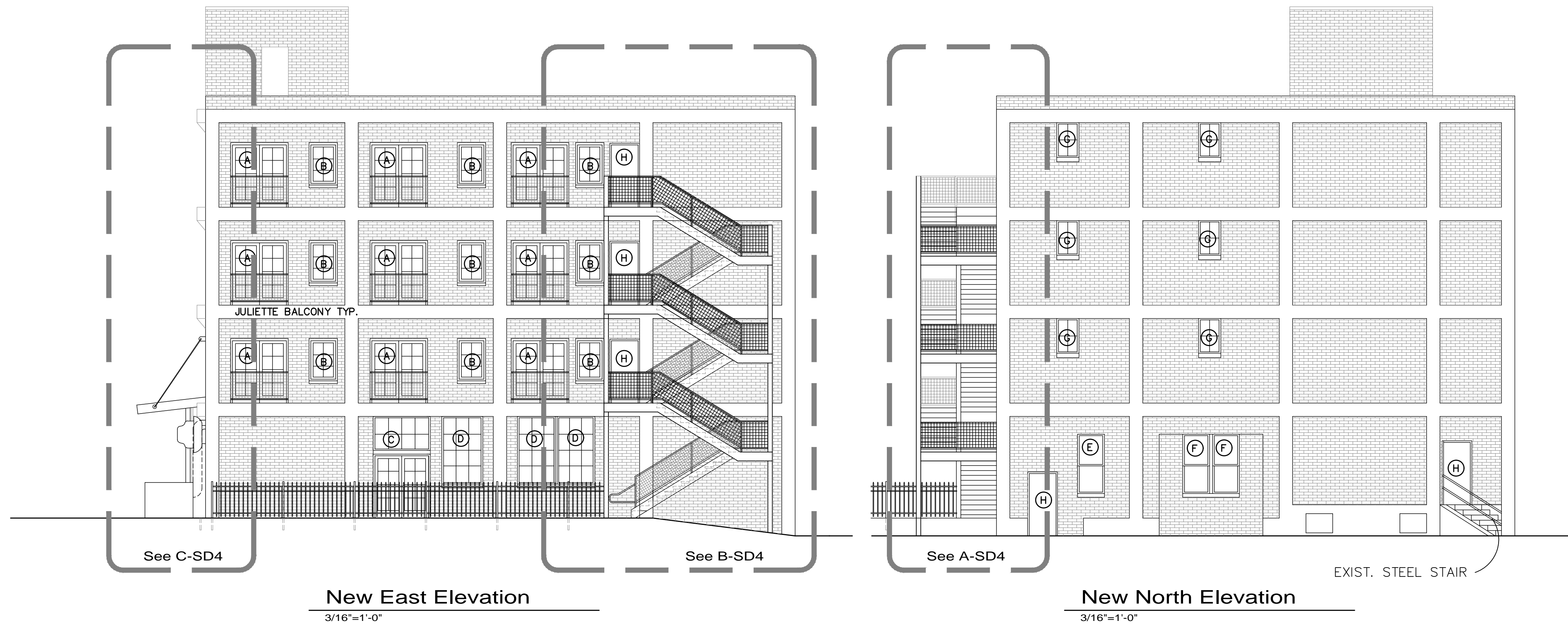
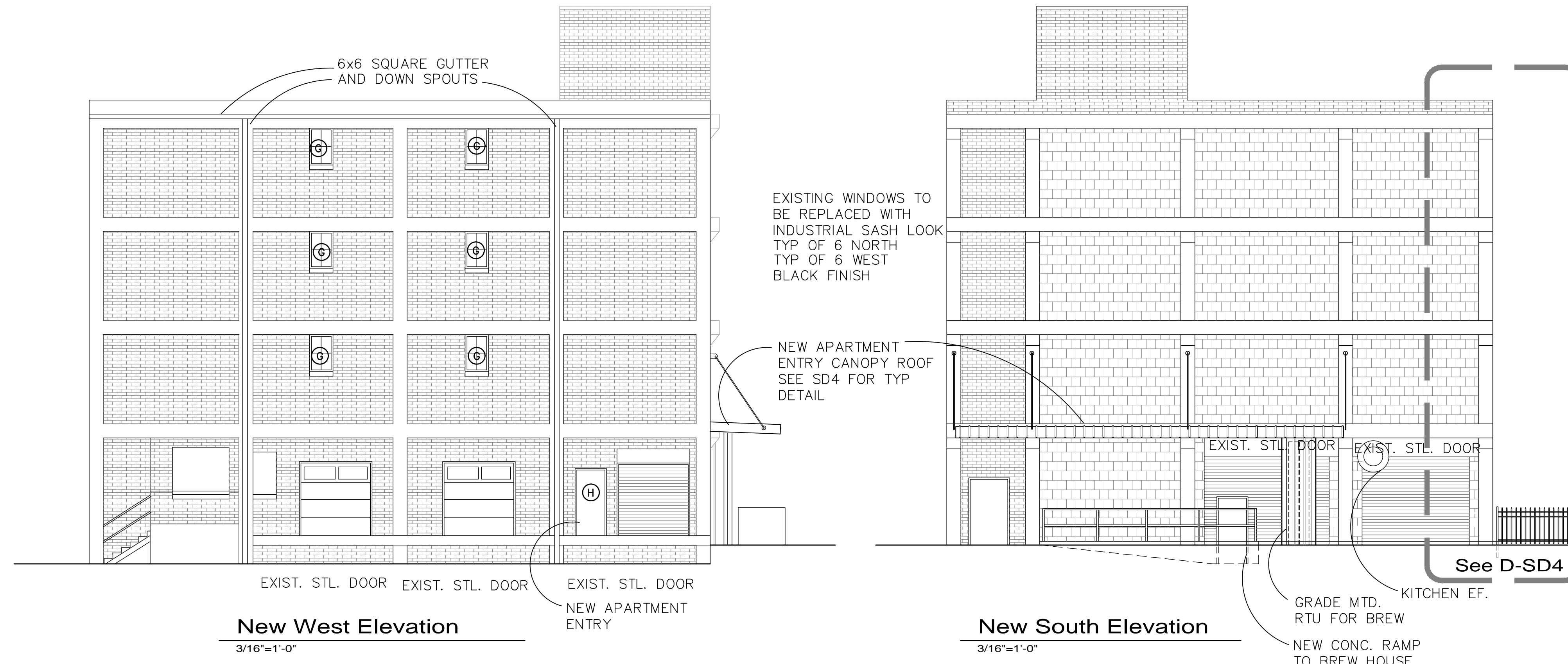


ELEVATIONS



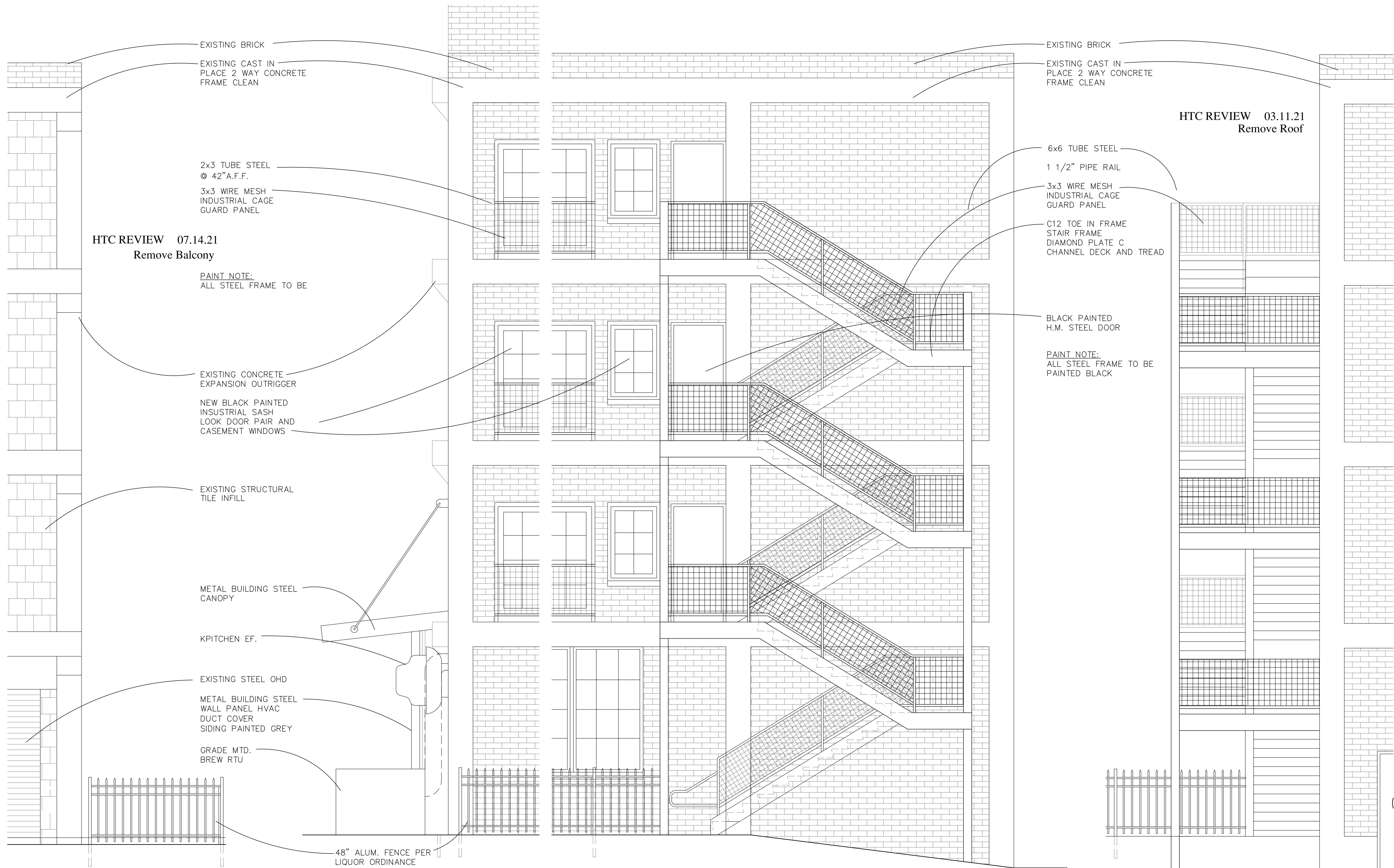
Elevation Data Table: Elevations		
Description	Value	Unit
a) Building Height in feet	59'-5"	feet
b) Total Building Square Footage	20,678	Square Feet
c) First Floor Building Square Footage	8,735	Square Feet
d) Number of building stories	4	
e) Exterior Material List (including colors) for all buildings and accessory strutures:		
Red brick and concrete		
Black Quaker Alum Windows		
Black Steel Stairs		
Black Rear Canopy		

ELEVATIONS



SEE SD4 FOR
DETAIL NOTES

JOB NUMBER	20110
DATE	07.25b.20
REVISIONS	
	08.04.20
	11.30.20
	12.01.20
	12.08.20
	12.17.20
	12.21.20
	03.11.21
HTC REVIEW	07.14.21



HTC REVIEW 07.14.21
Remove Balcony

2x3 TUBE STEEL
@ 42" A.F.F.
3x3 WIRE MESH
INDUSTRIAL CAGE
GUARD PANEL

PAINT NOTE:
ALL STEEL FRAME TO BE

EXISTING CONCRETE
EXPANSION OUTRIGGER

NEW BLACK PAINTED
INDUSTRIAL SASH
LOOK DOOR PAIR AND
CASEMENT WINDOWS

EXISTING STRUCTURAL
TILE INFILL

METAL BUILDING STEEL
CANOPY

KITCHEN EF.

EXISTING STEEL OHD

METAL BUILDING STEEL
WALL PANEL HVAC
DUCT COVER
SIDING PAINTED GREY

GRADE MTD.
BREW RTU

48" ALUM. FENCE PER
LIQUOR ORDINANCE

HTC REVIEW 03.11.21
Remove Roof

6x6 TUBE STEEL
1 1/2" PIPE RAIL
3x3 WIRE MESH
INDUSTRIAL CAGE
GUARD PANEL

C12 TOE IN FRAME
STAIR FRAME
DIAMOND PLATE C
CHANNEL DECK AND TREAD

BLACK PAINTED
H.M. STEEL DOOR

PAINT NOTE:
ALL STEEL FRAME TO BE
PAINTED BLACK

D Detail Elevation
3/8"=1'-0"

C Detail Elevation
3/8"=1'-0"

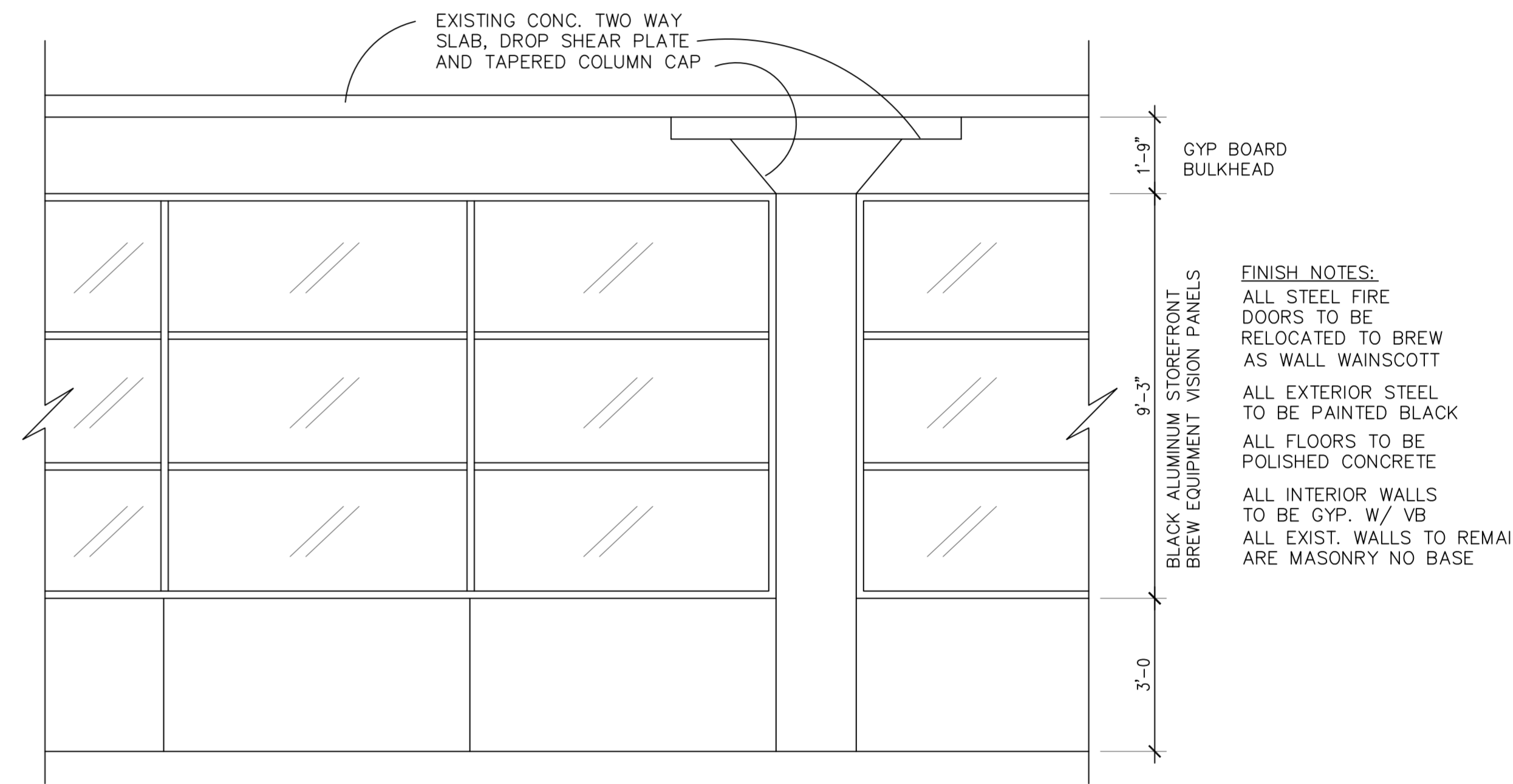
WINDOWS WITHIN 10'
OF STAIR EGRESS PATH
TO BE PROVIDED WITH
INTERIOR FIRE SHUTTERS

B Detail Elevation
3/8"=1'-0"

A Detail Elevation
3/8"=1'-0"

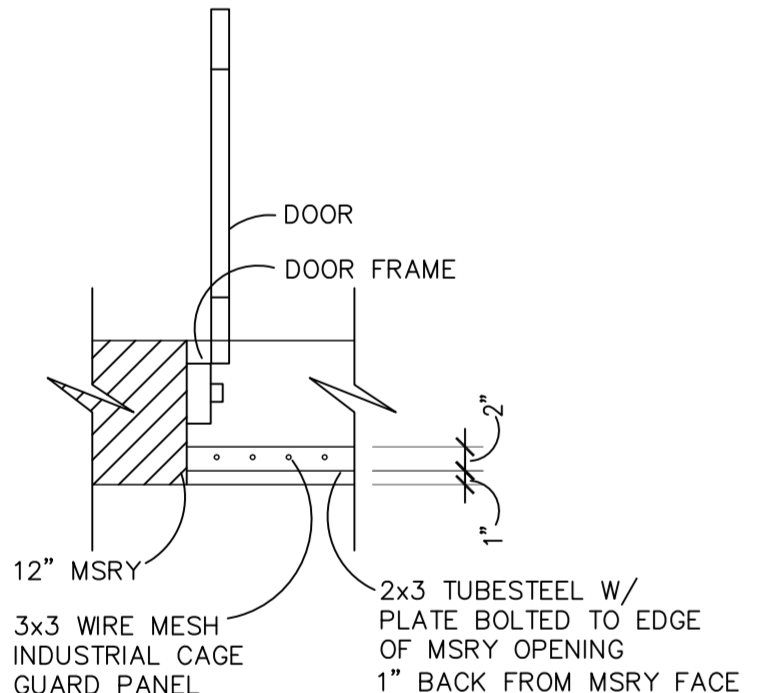
HTC REVIEW

JOB NUMBER	20110
DATE	12.01.20
REVISIONS	
	12.08.20
	12.17.20
	12.21.20
	03.11.21
	07.14.21

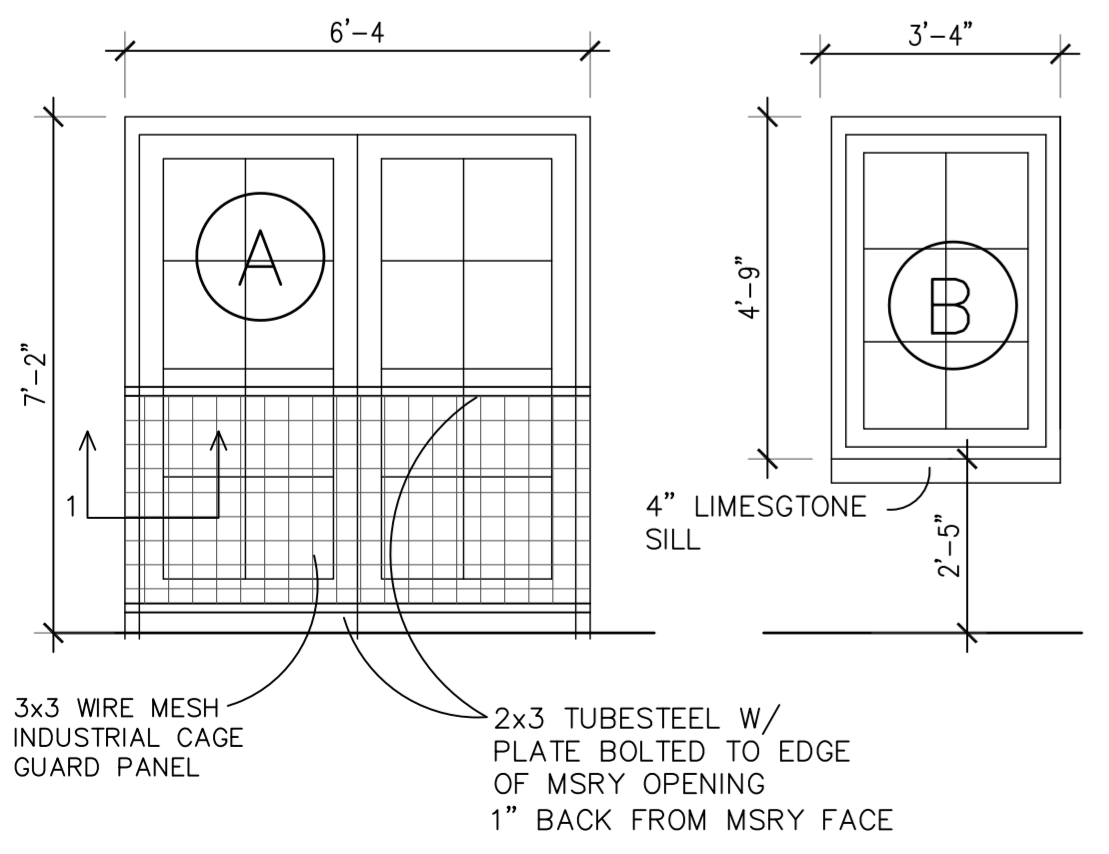


FINISH NOTES:
 ALL STEEL FIRE DOORS TO BE RELOCATED TO BREW AS WALL WAINSCOTT
 ALL EXTERIOR STEEL TO BE PAINTED BLACK
 ALL FLOORS TO BE POLISHED CONCRETE
 ALL INTERIOR WALLS TO BE GYP. W/ VB
 ALL EXIST. WALLS TO REMAIN ARE MASONRY NO BASE

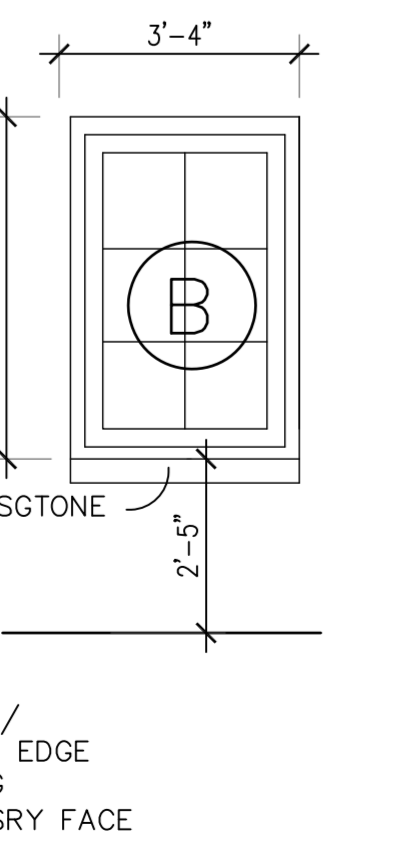
Interior Glass Wall Brewery
 Scale: 3/8"=1'-0"



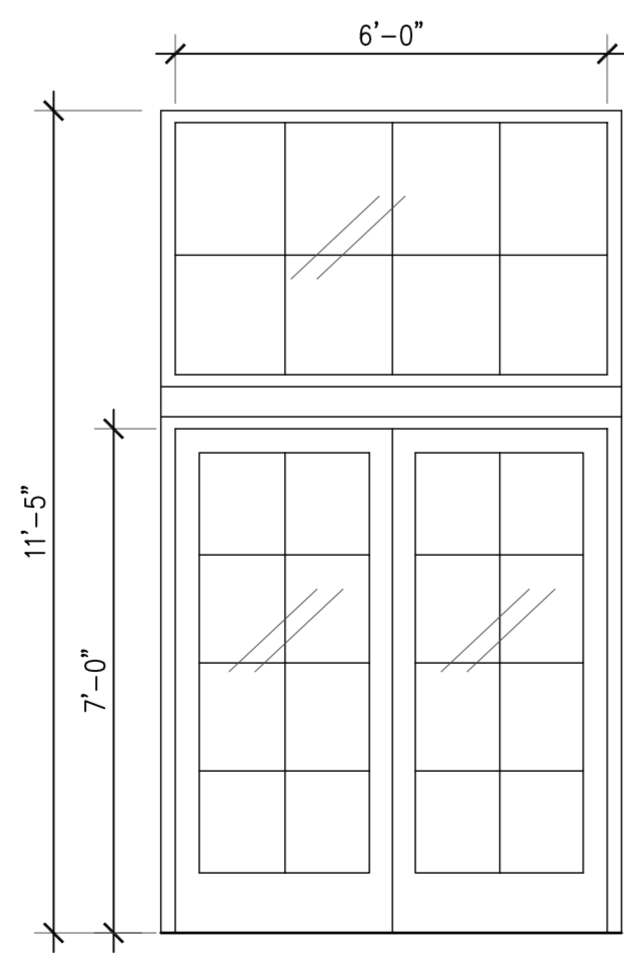
1 Balcony Jamb Detail
 Scale: 3/4"=1'-0"



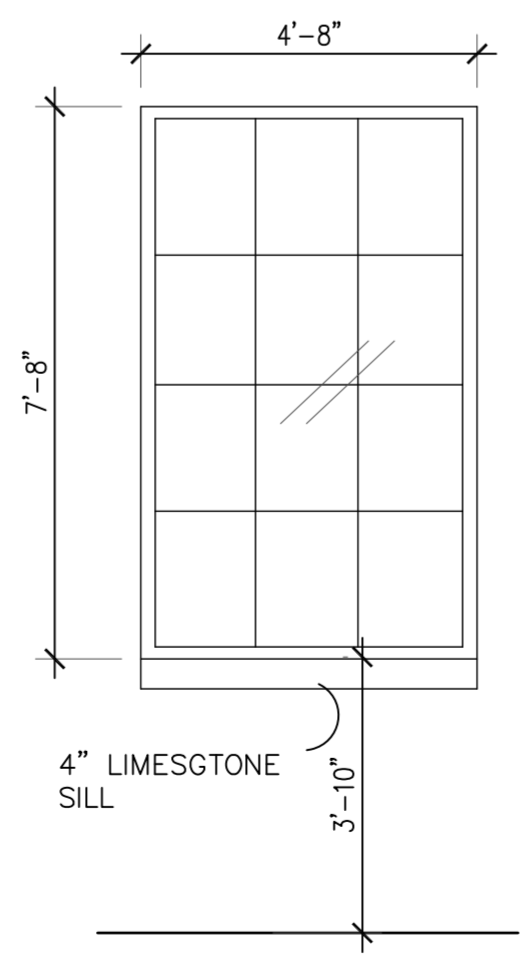
A Apartment Balcony
 Scale: 3/8"=1'-0"



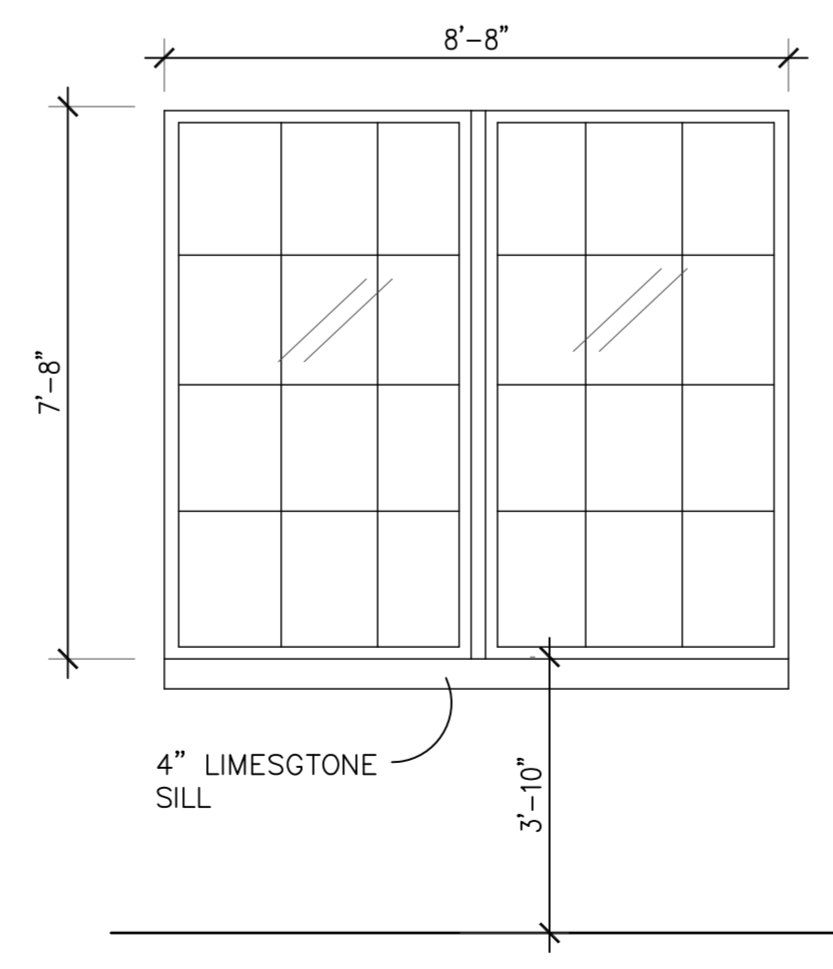
B Bedroom
 Scale: 3/8"=1'-0"



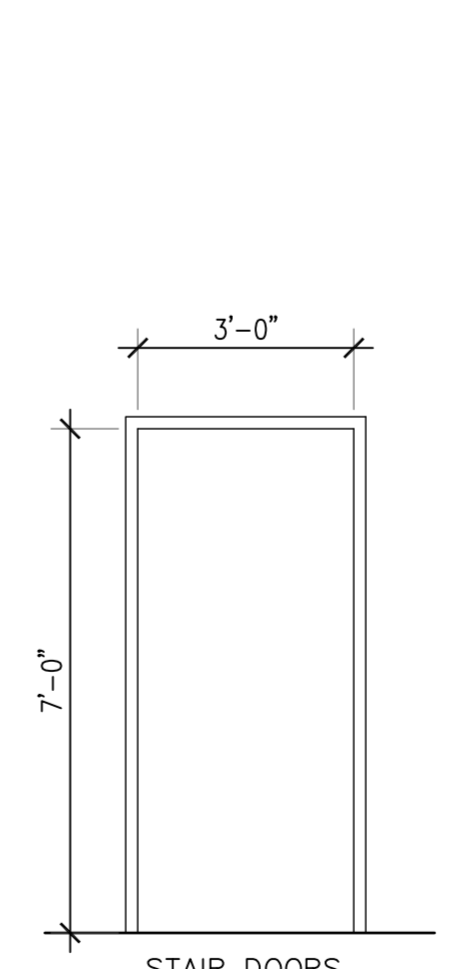
C Brew Patio
 Scale: 3/8"=1'-0"



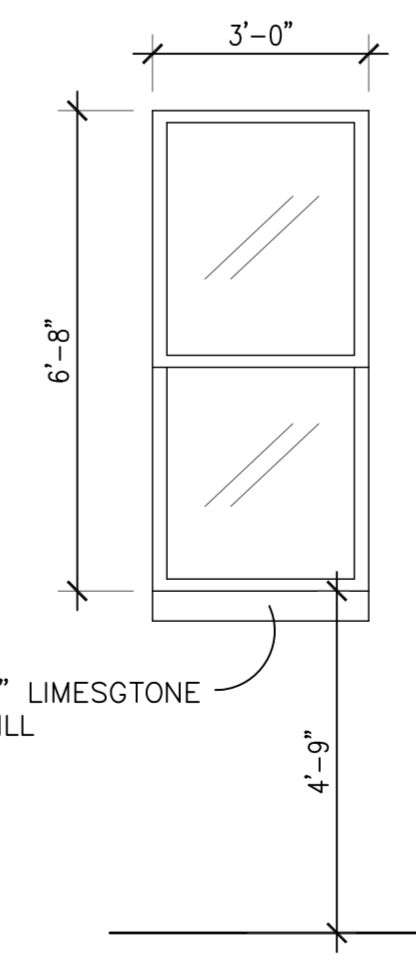
D Brew Patio
 Scale: 3/8"=1'-0"



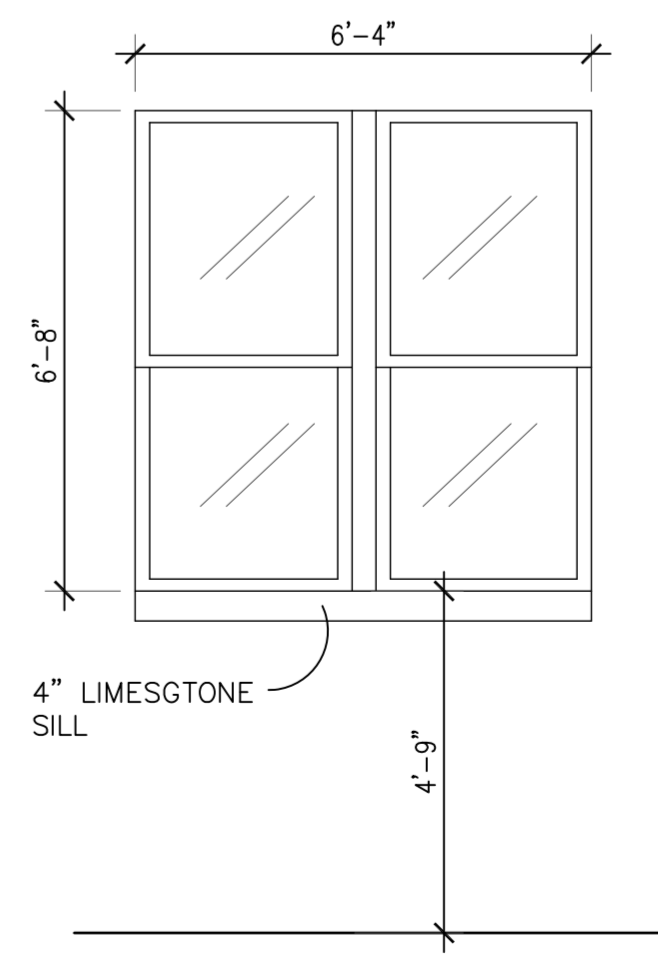
DD Brew Patio
 Scale: 3/8"=1'-0"



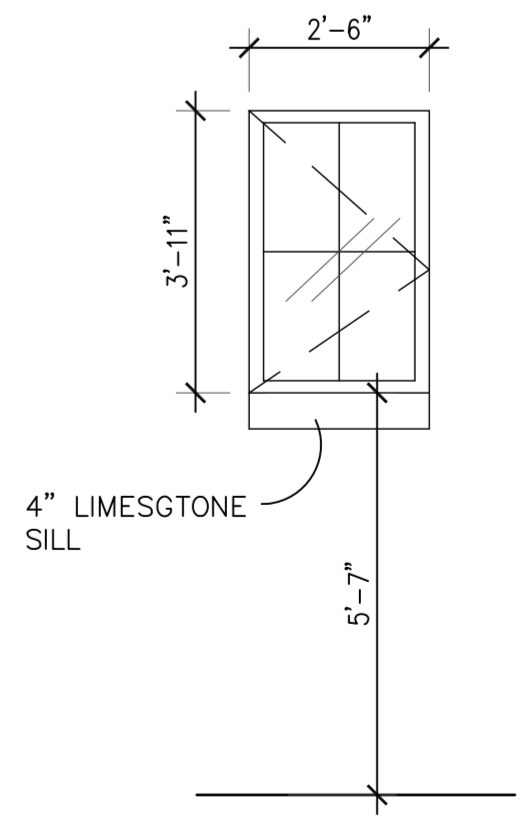
H FLUSH
 Scale: 3/8"=1'-0"



E Brew Exist.
 Scale: 3/8"=1'-0"



F Brew Exist.
 Scale: 3/8"=1'-0"



G Apartment Exist.
 Scale: 3/8"=1'-0"

ALL WINDOWS AND DOORS TO BE QUAKER INDUSTRIAL SASH LOOK PAINT BLACK

STAIR DOORS APARTMENT ENTRY H.M. DOOR IN H.M. FRAME SCWD APARTMENT INTERIOR IN H.M. FRAME

EXISTING NORTH DOUBLE HUNG

EXISTING NORTH DOUBLE HUNG

EXISTING NORTH AND WEST APARTMENT WINDOW OPENING NEW CASEMENT

Project:
 Cross Street Development
 Brew Pub and Apartments
 Aurora, Illinois 60506

Sheet:
 Details and Window Details

JOB NUMBER	20110
DATE	12.01.20
REVISIONS	
	12.08.20
	12.17.20
	12.21.20
	03.11.21
	07.14.21

HTC REVIEW

NAILING FLANGES AND DRIP CAPS (INTEGRAL OR APPLIED) DO NOT TAKE THE PLACE OF WINDOW FLASHING. ALL WINDOWS AND DOORS MUST BE PROPERLY FLASHED AND SEALED WITH MATERIAL COMPATIBLE SEALANT FOR PROTECTION AGAINST WATER AND INFILTRATION AROUND THE ENTIRE PERIMETER. FAILURE TO DO SO COULD RESULT IN PRODUCT OR PROPERTY DAMAGE.

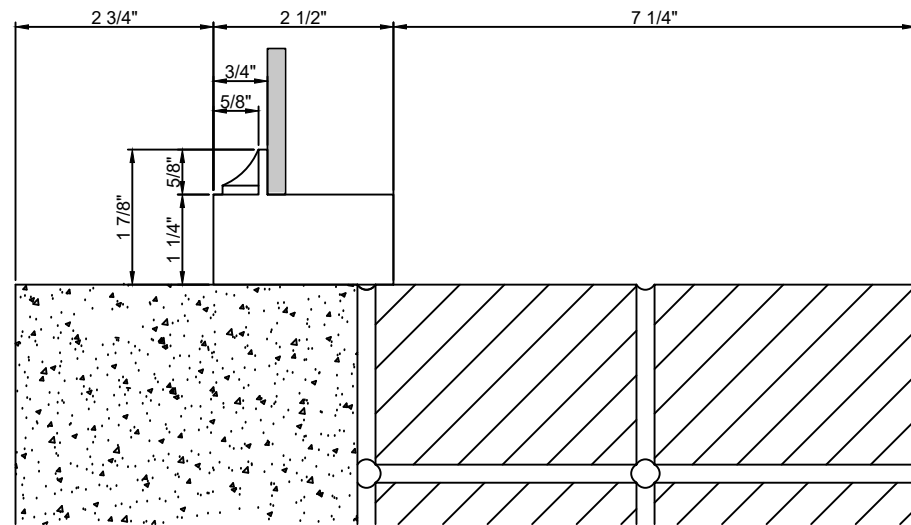
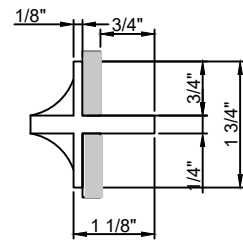
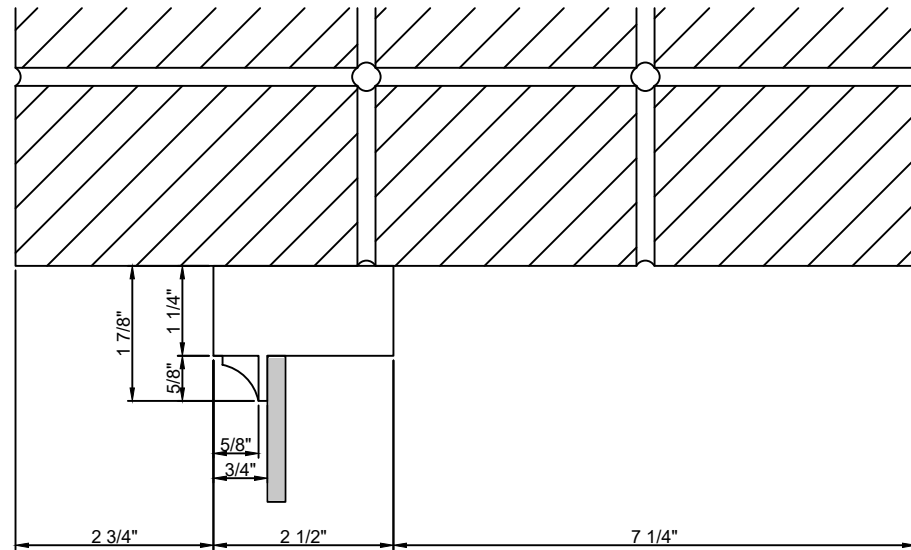
NOTICE:
QUAKER DOES NOT SUPPLY ANY FASTENERS, SHIMS, BACKER ROD, OR SEALANTS. UNLESS OTHERWISE NOTED.

VERIFY INSTALLATION
VERIFY WALL DETAILS

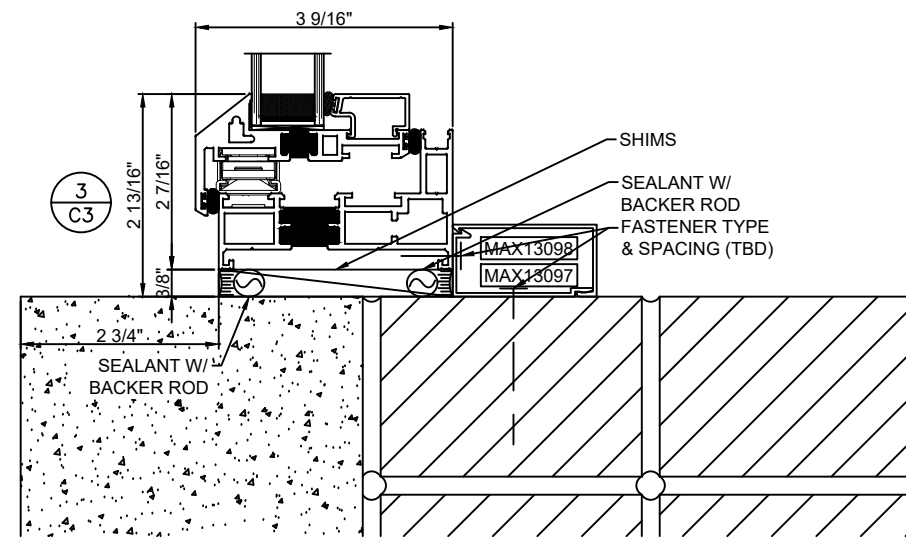
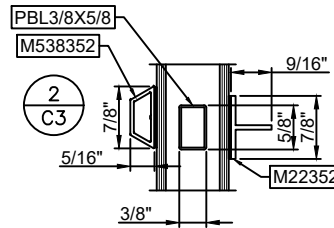
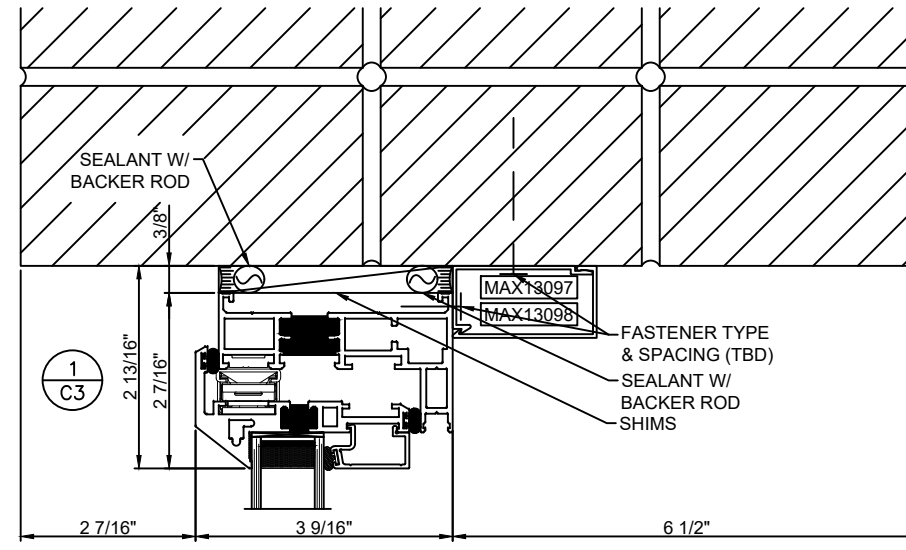
SEALANT MUST MEET OR EXCEED
ASTM C920-11 SPECIFICATION

PROVIDE ADEQUATE BLOCKING TO
SUPPORT THE SILL OF THE WINDOW

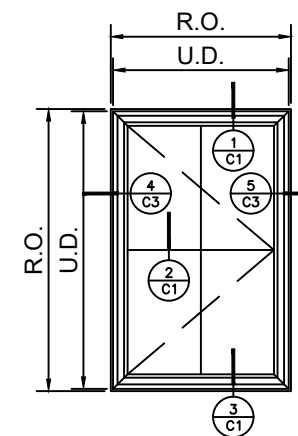
EXTERIOR



EXISTING CONDITION




PROPOSED



Project Name:
110 CROSS

AURORA, IL

Description:
CUT DETAILS
QUAKER WINDOW PRODUCTS WILL NOT BE RESPONSIBLE FOR FIELD MEASUREMENT, QUANTITIES, & INSTALLATION DESIGN. CONTRACTOR MUST VERIFY ALL DIMENSIONS.


 PHONE (573)-744-5211
 FAX (573)-744-5586
 COMMERCIAL
 aneuter@quakerwindows.com
 504 Highway 63 South
 Freeburg, MO 65035
 Drawn By: **AMS**
 Checked By: **AGN**
 Scale: #####
 Sheet #: **C1**
 Drawing Created 1/25/21

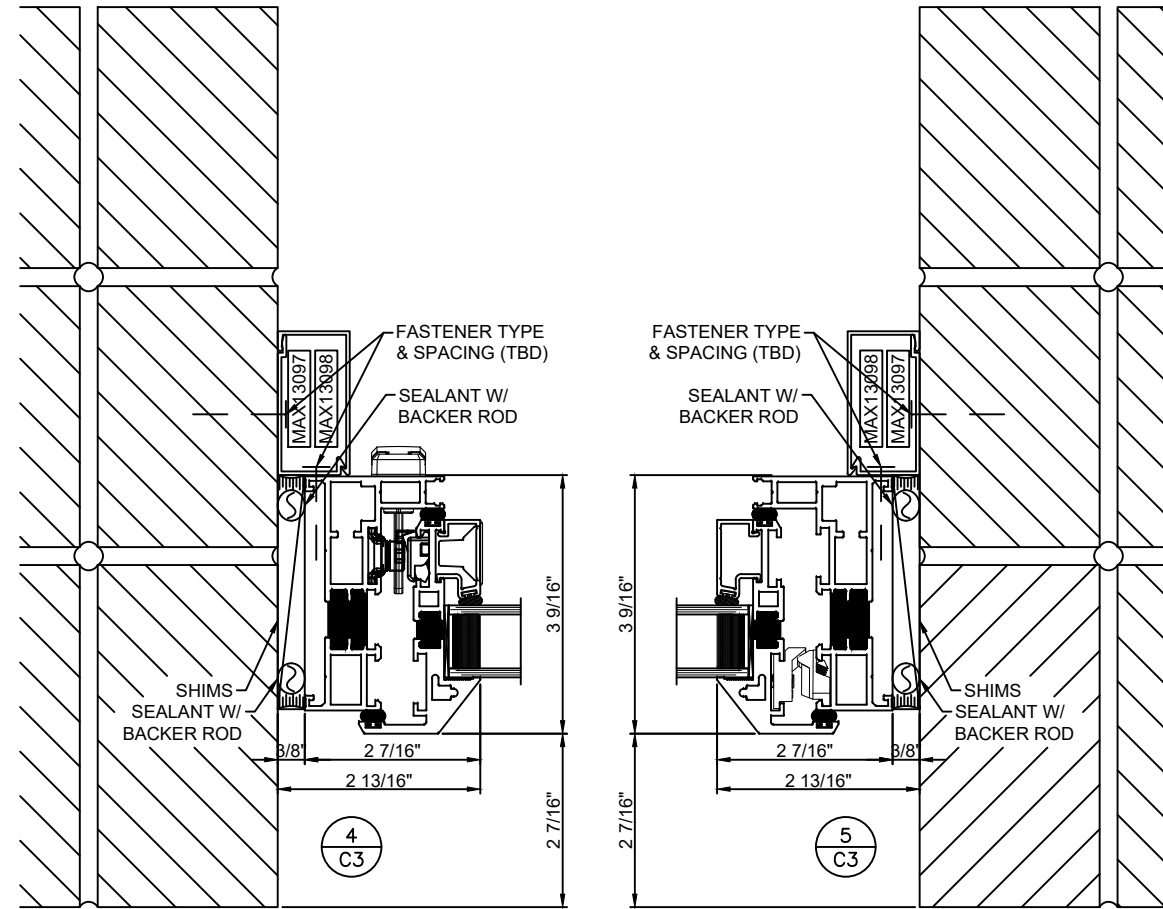
NAILING FLANGES AND DRIP CAPS (INTEGRAL OR APPLIED)
 DO NOT TAKE THE PLACE OF WINDOW FLASHING. ALL
 WINDOWS AND DOORS MUST BE PROPERLY FLASHED AND
 SEALED WITH MATERIAL COMPATIBLE SEALANT FOR
 PROTECTION AGAINST WATER AND INFILTRATION AROUND
 THE ENTIRE PERIMETER. FAILURE TO DO SO COULD
 RESULT IN PRODUCT OR PROPERTY DAMAGE.

NOTICE:
 QUAKER DOES NOT SUPPLY ANY
 FASTENERS, SHIMS, BACKER ROD, OR
 SEALANTS. UNLESS OTHERWISE NOTED.

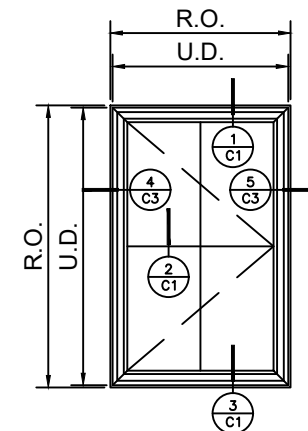
VERIFY INSTALLATION
 VERIFY WALL DETAILS

SEALANT MUST MEET OR EXCEED
 ASTM C920-11 SPECIFICATION

PROVIDE ADEQUATE BLOCKING TO
 SUPPORT THE SILL OF THE WINDOW



EXTERIOR



Project Name:
110 CROSS

AURORA, IL

CUT DETAILS

Description:
 QUAKER WINDOW PRODUCTS
 WILL NOT BE RESPONSIBLE
 FOR FIELD MEASUREMENT,
 QUANTITIES, & INSTALLATION
 DESIGN. CONTRACTOR MUST
 VERIFY ALL DIMENSIONS.

PHONE (573)-744-5211
 FAX (573)-744-5586
 COMMERCIAL
 aneuter@quakerwindows.com
 Scale: **3/8"=1"**
 Sheet #: **C3**

QUAKER
 COMMERCIAL
 504 Highway 63 South
 Freeburg, MO 65035

Drawn By: **AMS**
 Checked By: **AGN**

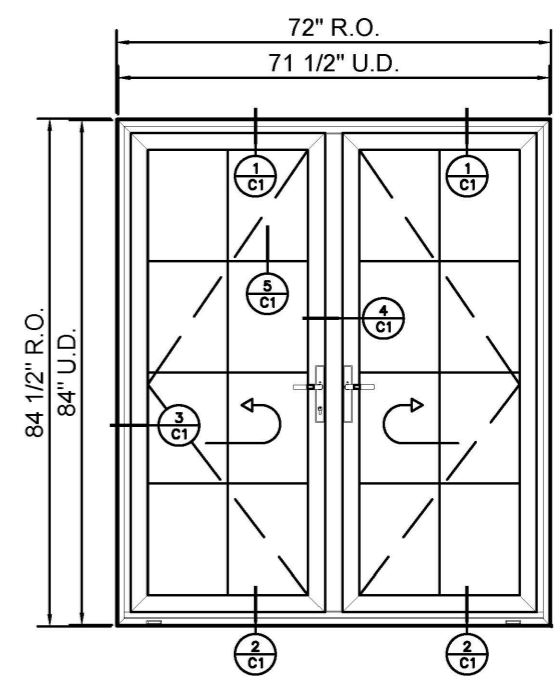
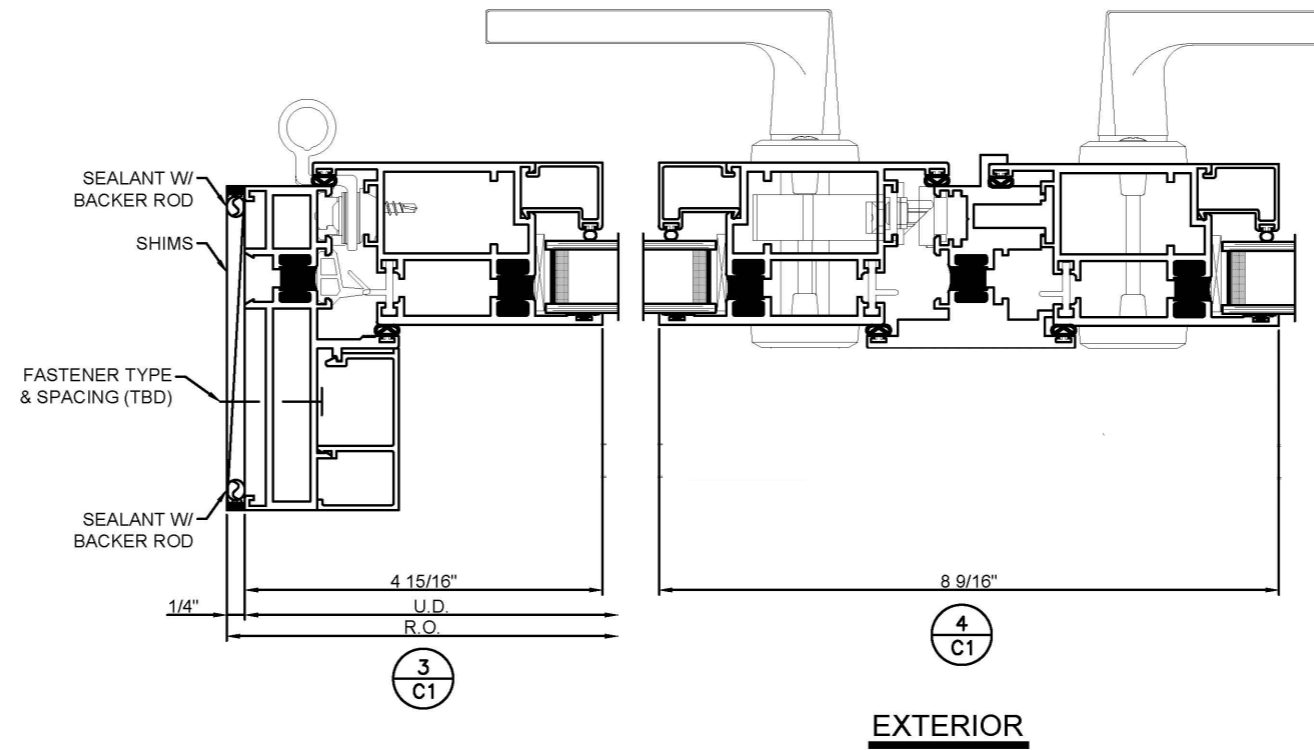
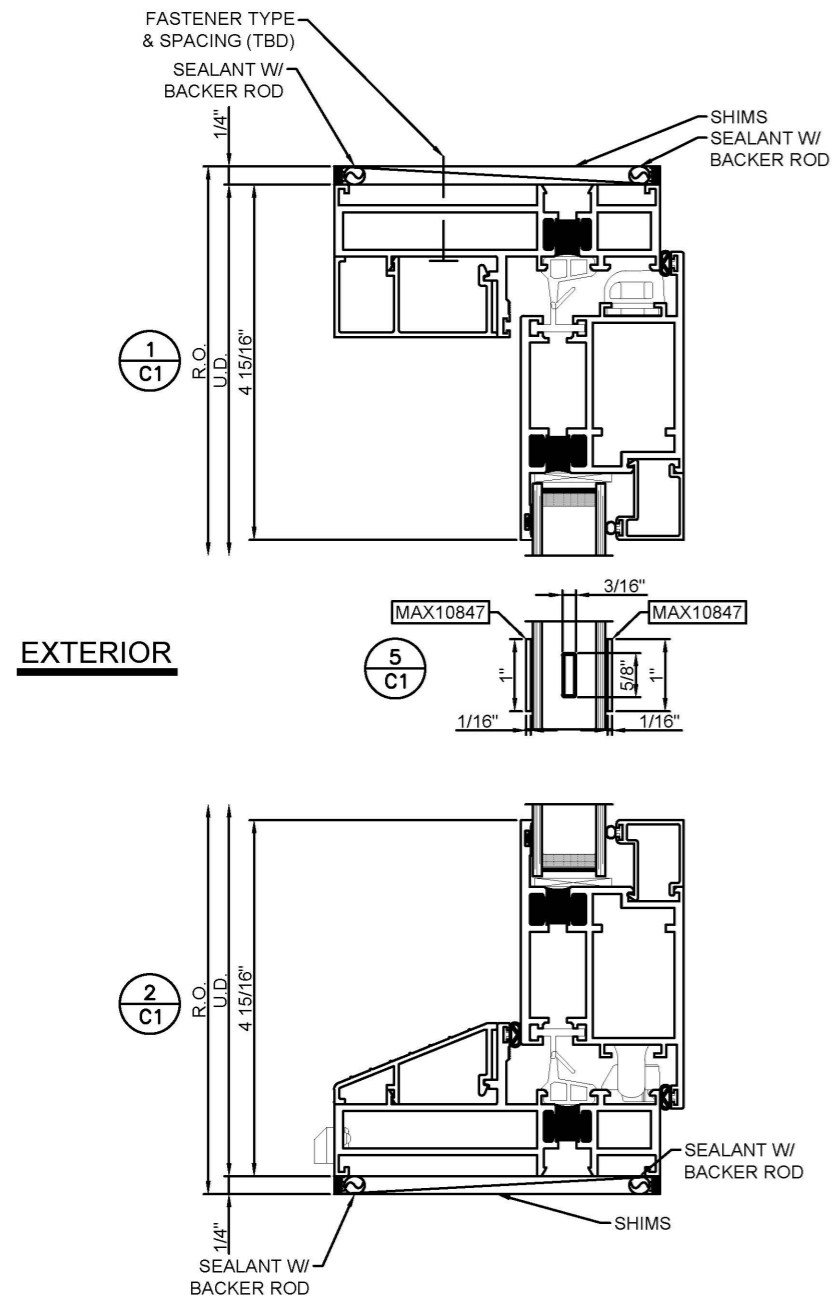
NAILING FLANGES AND DRIP CAPS (INTEGRAL OR APPLIED) DO NOT TAKE THE PLACE OF WINDOW FLASHING. ALL WINDOWS AND DOORS MUST BE PROPERLY FLASHED AND SEALED WITH MATERIAL COMPATIBLE SEALANT FOR PROTECTION AGAINST WATER AND INFILTRATION AROUND THE ENTIRE PERIMETER. FAILURE TO DO SO COULD RESULT IN PRODUCT OR PROPERTY DAMAGE.

NOTICE:
QUAKER DOES NOT SUPPLY ANY FASTENERS, SHIMS, BACKER ROD, OR SEALANTS. UNLESS OTHERWISE NOTED.

VERIFY INSTALLATION
VERIFY WALL DETAILS

SEALANT MUST MEET OR EXCEED
ASTM C920-11 SPECIFICATION

PROVIDE ADEQUATE BLOCKING TO
SUPPORT THE SILL OF THE WINDOW



Project Name:
110 CROSS

AURORA, IL

CUT DETAILS

Description:
QUAKER WINDOW PRODUCTS WILL NOT BE RESPONSIBLE FOR FIELD MEASUREMENT, QUANTITIES, & INSTALLATION DESIGN. CONTRACTOR MUST VERIFY ALL DIMENSIONS.

PHONE (573)-744-5211
FAX (573)-744-5586
COMMERCIAL
504 Highway 63 South
Freeburg, MO 65035

Scale: 3/8"=1"
Sheet #: C4

Drawn By: AMS
Checked By: AGN

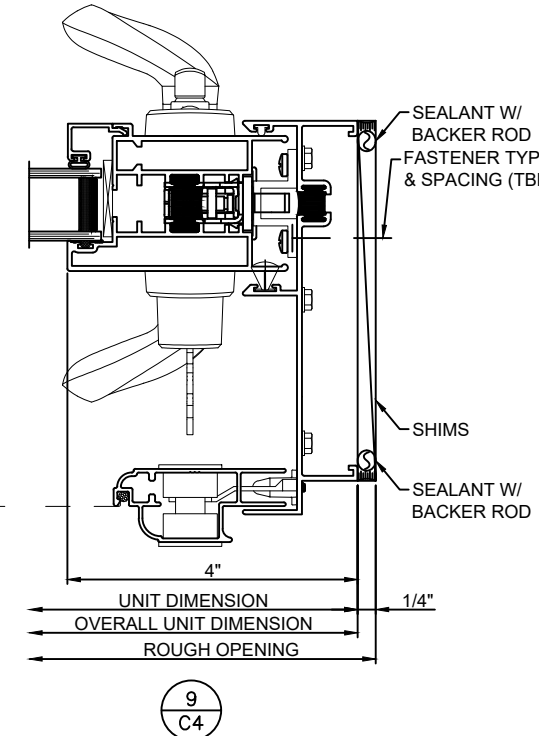
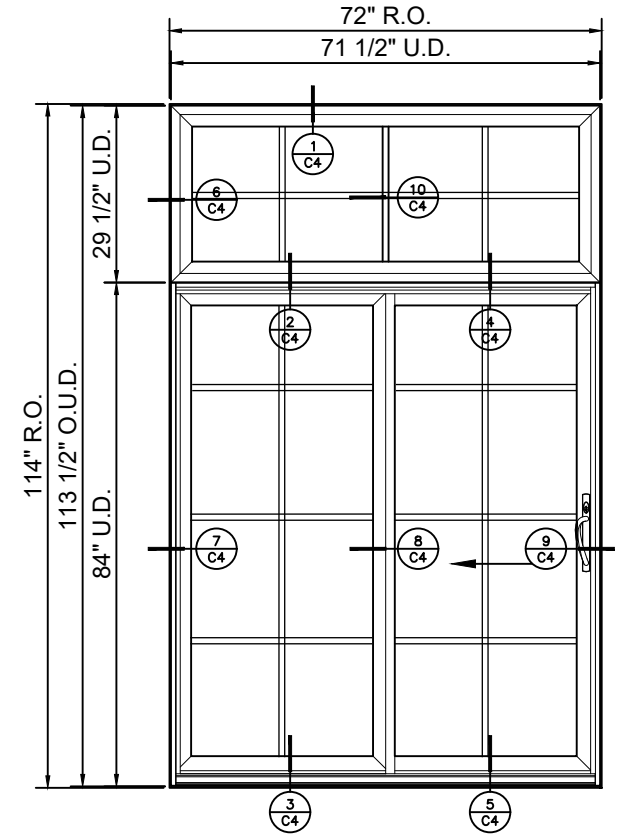
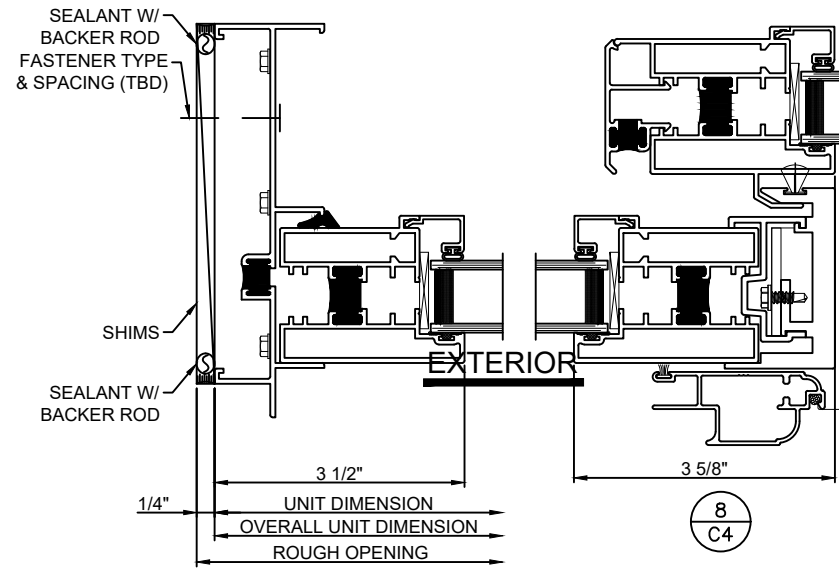
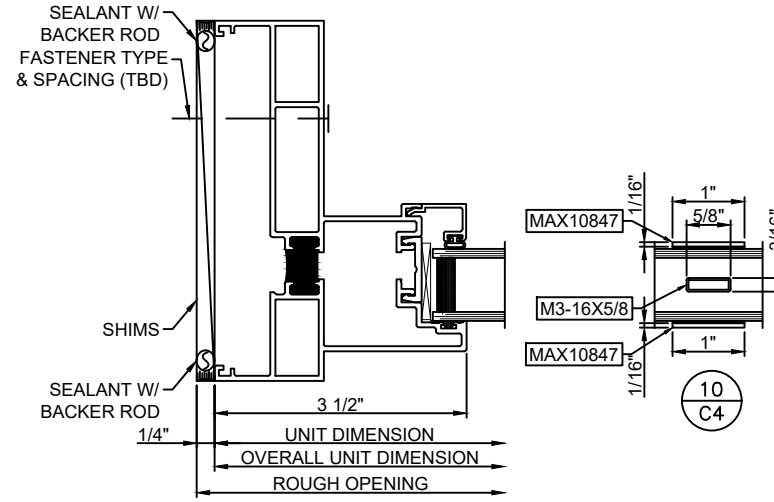
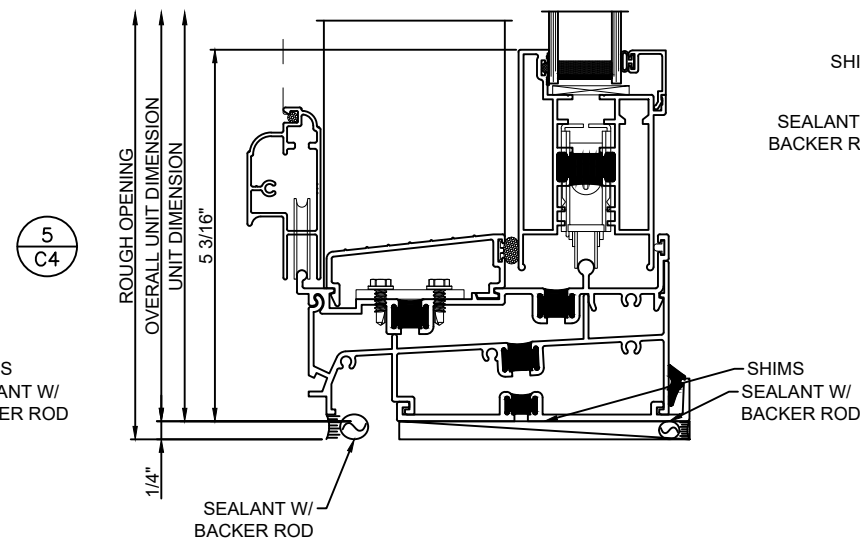
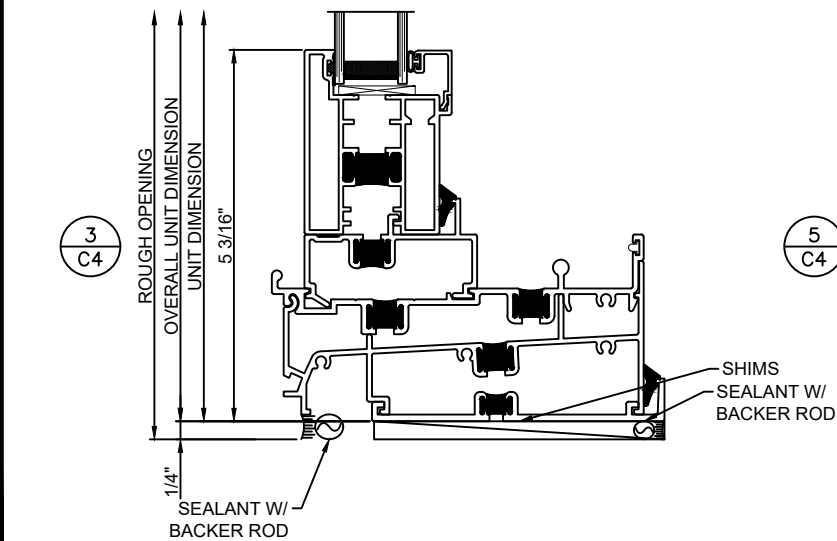
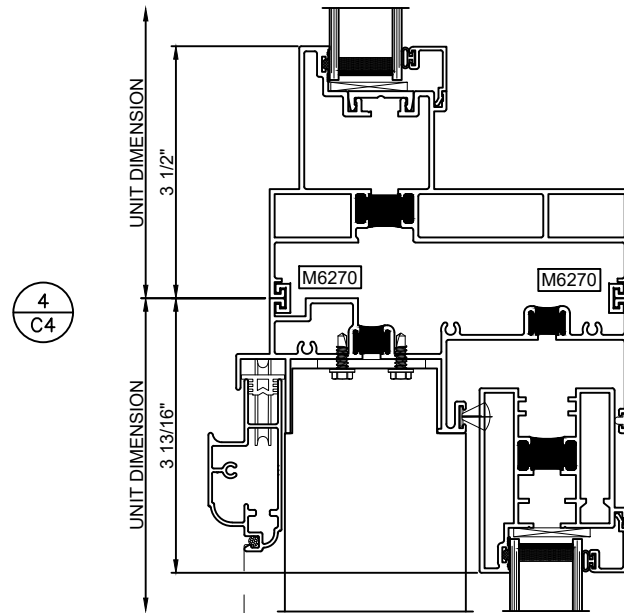
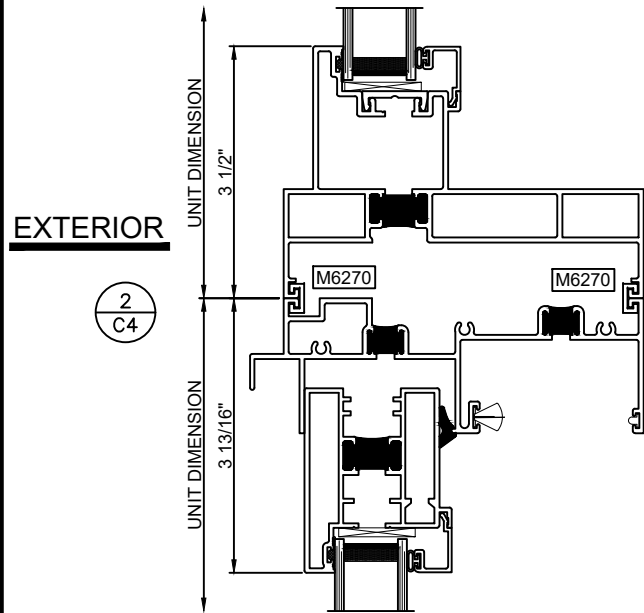
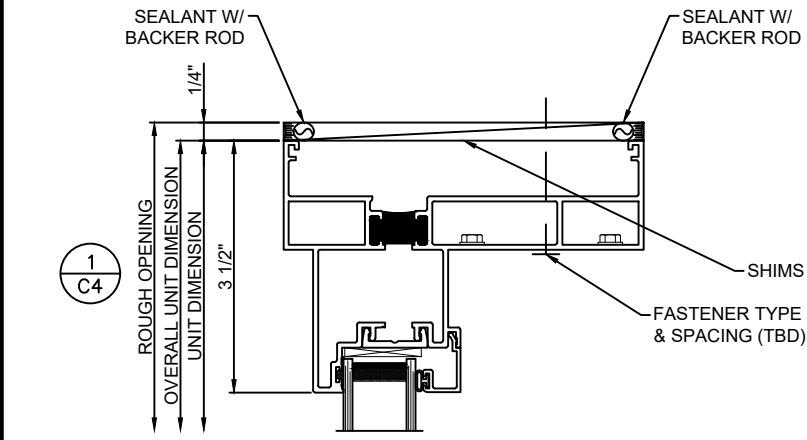
NAILING FLANGES AND DRIP CAPS (INTEGRAL OR APPLIED) DO NOT TAKE THE PLACE OF WINDOW FLASHING. ALL WINDOWS AND DOORS MUST BE PROPERLY FLASHED AND SEALED WITH MATERIAL COMPATIBLE SEALANT FOR PROTECTION AGAINST WATER AND INFILTRATION AROUND THE ENTIRE PERIMETER. FAILURE TO DO SO COULD RESULT IN PRODUCT OR PROPERTY DAMAGE.

NOTICE:
QUAKER DOES NOT SUPPLY ANY FASTENERS, SHIMS, BACKER ROD, OR SEALANTS. UNLESS OTHERWISE NOTED.

VERIFY INSTALLATION
VERIFY WALL DETAILS

SEALANT MUST MEET OR EXCEED
ASTM C920-11 SPECIFICATION

PROVIDE ADEQUATE BLOCKING TO
SUPPORT THE SILL OF THE WINDOW



Project Name:
110 CROSS

AURORA, IL

Description:
CUT DETAILS
QUAKER WINDOW PRODUCTS
WILL NOT BE RESPONSIBLE
FOR FIELD MEASUREMENT,
QUANTITIES, & INSTALLATION
DESIGN. CONTRACTOR MUST
VERIFY ALL DIMENSIONS.

PHONE (573)-744-5211
FAX (573)-744-5586
COMMERCIAL
anetuser@quakerwindows.com
Scale: 3/8"=1"
Sheet #: C4
Drawn By: AMS
Checked By: AGN
504 Highway 63 South
Freeburg, MO 65035
Drawing Created
1/25/21