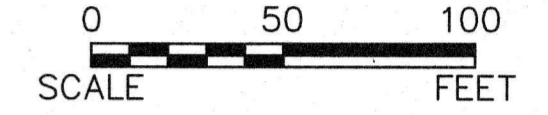
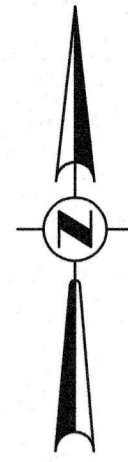
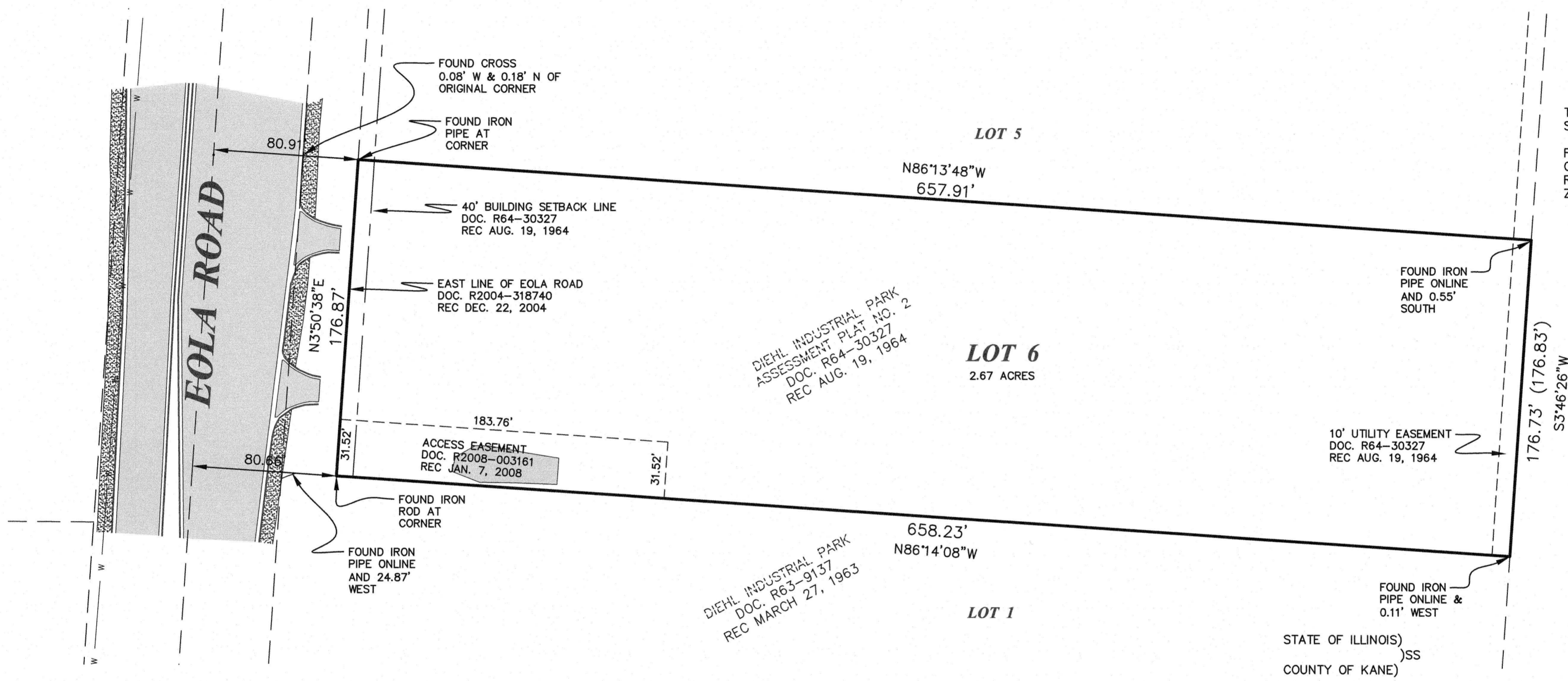


PLAT OF SURVEY

LOT 6 (EXCEPT THAT PART CONVEYED TO THE COUNTY OF DUPAGE BY DOCUMENT NUMBER R1993-191752 AND DOCUMENT NUMBER R2004-318740) IN DIEHL INDUSTRIAL PARK ASSESSMENT PLAT NO. 2, OF PART OF THE WEST 739 FEET OF TRACT 2 IN ASSESSMENT PLAT OF CULVER FARM AND THE HARRIS FARM OF PART OF SECTIONS 5, 6, 7 AND 8, TOWNSHIP 38 NORTH, RANGE 9, EAST OF THE THIRD PRINCIPAL MERIDIAN, ACCORDING TO THE PLAT THEREOF RECORDED AUGUST 19, 1964 AS DOCUMENT R64-30327, IN DUPAGE COUNTY, ILLINOIS.



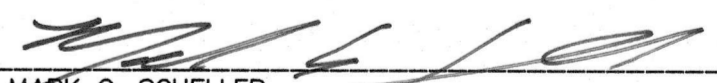
NOTES:
 THE BASIS OF BEARINGS IS THE ILLINOIS STATE PLANE COORDINATE SYSTEM.
 FOR BUILDING LINES, EASEMENTS AND OTHER RESTRICTIONS NOT SHOWN HEREON REFER TO YOUR DEED, TITLE POLICY, ZONING ORDINANCE, ETC.



STATE OF ILLINOIS)
)SS
 COUNTY OF KANE)

THIS IS TO CERTIFY THAT WE, ENGINEERING ENTERPRISES INC., HAVE PERFORMED A BOUNDARY SURVEY OF THE PROPERTY DESCRIBED IN THE ABOVE LEGAL DESCRIPTION, AS SHOWN BY THE ANNEXED PLAT, WHICH IS A TRUE AND CORRECT REPRESENTATION OF SAID SURVEY. ALL DISTANCES SHOWN ARE IN FEET AND DECIMALS THEREOF. THIS PROFESSIONAL SERVICE CONFORMS TO THE CURRENT ILLINOIS MINIMUM STANDARDS FOR A BOUNDARY SURVEY. FIELD WORK PERFORMED MARCH 29, 2017.

GIVEN UNDER MY HAND AND SEAL AT SUGAR GROVE, ILLINOIS, THIS 30th DAY OF MARCH, 2017.

BY: 
 MARK G. SCHELLER
 PROFESSIONAL LAND SURVEYOR #3581
 (EXPIRES 11-30-18)

ENGINEERING ENTERPRISES, INC.
 PROFESSIONAL DESIGN FIRM #184-002003
 (EXPIRES 04-30-17)




Engineering Enterprises, Inc.
 CONSULTING ENGINEERS
 52 Wheeler Road
 Sugar Grove, Illinois 60554
 630.466.6700 / www.eeiweb.com

SCIENTEL SOLUTIONS
 948 SPRINGER DRIVE
 LOMBARD, IL 60148

NO.	DATE	REVISIONS

DATE: MARCH 30, 2017
 PROJECT NO. P16039
 FILE NO P16039-PLAT
PAGE 1 OF 1