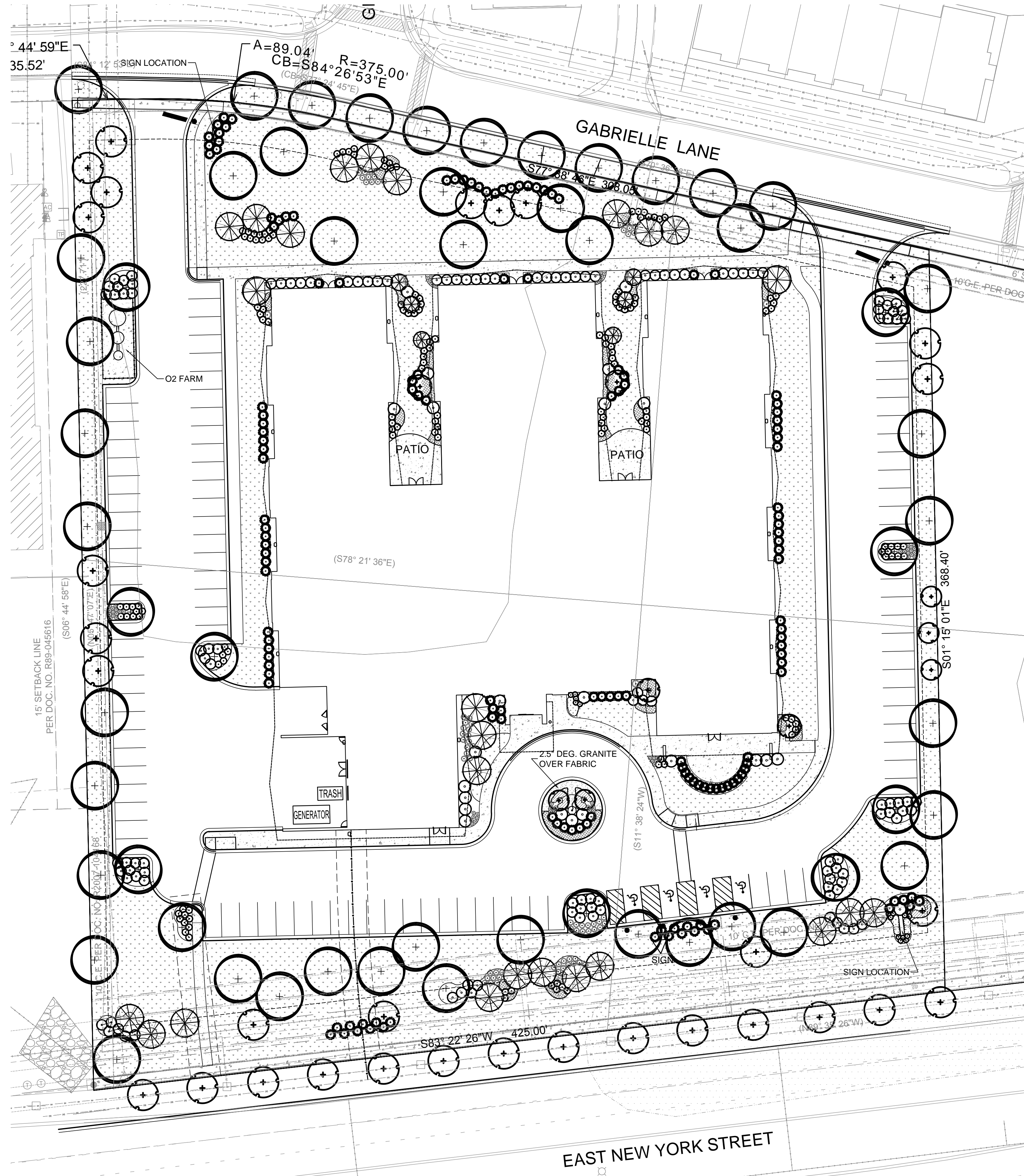
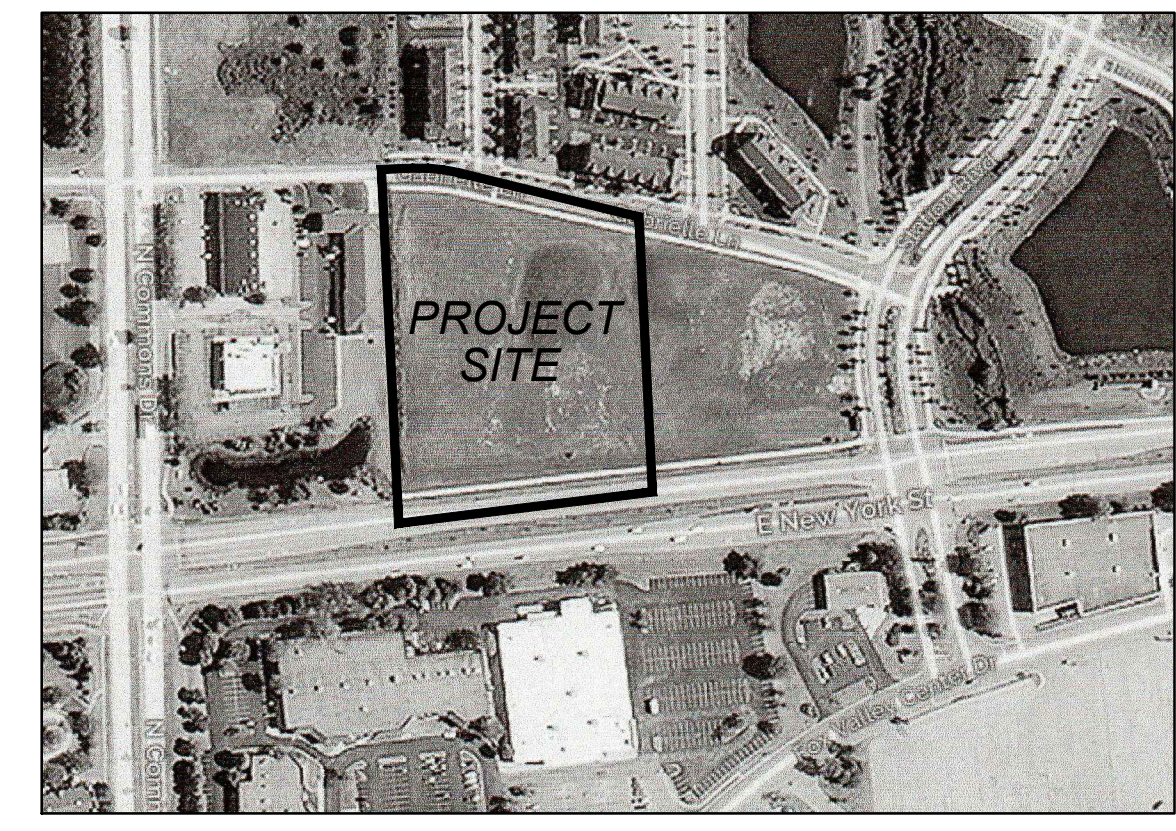


# LANDSCAPE PLAN

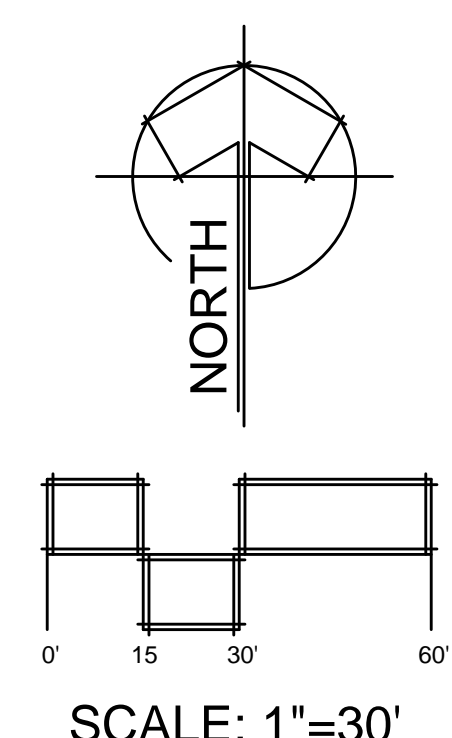
## TRANSITIONAL CARE FACILITY



- LEGEND:**
- (E) UTILITY - ELECTRIC
  - (W) UTILITY - WATER LINE
  - (T) UTILITY - TELEPHONE
  - (STM) UTILITY - STORM SEWER
  - OH OVER HEAD UTILITIES
  - ← SANITARY SEWER
  - TRAFFIC SIGN
  - ⊙ FLAG POLE
  - CONCRETE
  - FENCE
  - UTILITY POLE



LOCATION MAP



**Landscape Data Table: Planting Material Key**  
 Note: Symbols are blackline for proposed grayscale for existing

Canopy Trees (minimum size 2.5 caliper) Count:	56
Evergreen Trees (minimum size 6 feet) Count:	34
Understory Trees (minimum size 2.5 caliper or 8 feet if multi-stemmed) Count:	40
Evergreen Shrubs (minimum of 18 inches) Count:	154
Deciduous Shrubs (minimum of 18 inches) Count:	299
Ornamental Grasses Count:	125
Perennials Count:	205
Annuals Count:	156
Groundcover Square Footage:	192
Turf (Seeded) Square Footage:	0
Turf (Sod) Square Footage:	58005
Native Prairie Planting Square Footage:	0
Native Wetland Planting Square Footage:	0

**Landscape Data Table: CTEs Provided**

	CTE Value	Count Provided	Total CTEs Provided
Canopy Trees	1	56	56
Evergreen Trees	3	34	11
Understory Trees	3	40	13
Deciduous Shrubs	20	299	15
Evergreen Shrubs	20	154	8
<b>Total:</b>		<b>583</b>	<b>103</b>

**REVISIONS**

4	City Review Comments	8/2/17
3	Entrance drive widths	7/28/17
2	Floodplain Area	6/15/17
1	New Site Plan	4/24/17

**TRANSITIONAL CARE FACILITY**  
**4030 E. NEW YORK STREET**  
**AURORA, ILLINOIS**  
 PETITIONER:  
**ARCO Construction**  
 900 N. Rock Road  
 St. Louis, MO 63119

**PEDERSEN CO.**  
 Landscape Contracting & Management  
 847-488-0303 Fax: 847-488-0966  
 www.pedersencompany.com  
 67453 IL Rt. 25 - St. Charles, IL 60114

**STAMP:**

**METZ & COMPANY**  
 LANDSCAPE ARCHITECTURE/SITE PLANNING  
 826 East Maple Street  
 Lombard, Illinois 60148  
 PH: 630.561.3903  
 Email: metz\_landarch@comcast.net

**TITLE**  
**LANDSCAPE PLAN**

**PROJECT NO.:**  
 17-036  
**DATE:** 1-30-17  
**SCALE:** 1"=30'

**SHEET**  
**L-1**

If this plan is not 24" x 36" in size, then this is a reproduction that may not be to scale. Copyright 2017, all rights reserved. The design and any/all ideas contained herein are the sole property of Metz & Company. Any reproduction of the design on the concept embodied herein in any form, in whole or in part, without consent from Metz & Company is prohibited.