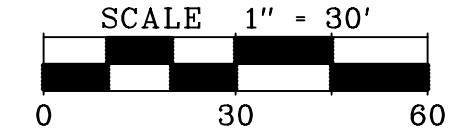
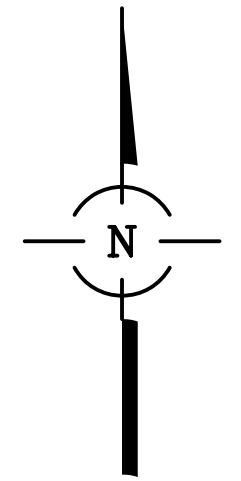
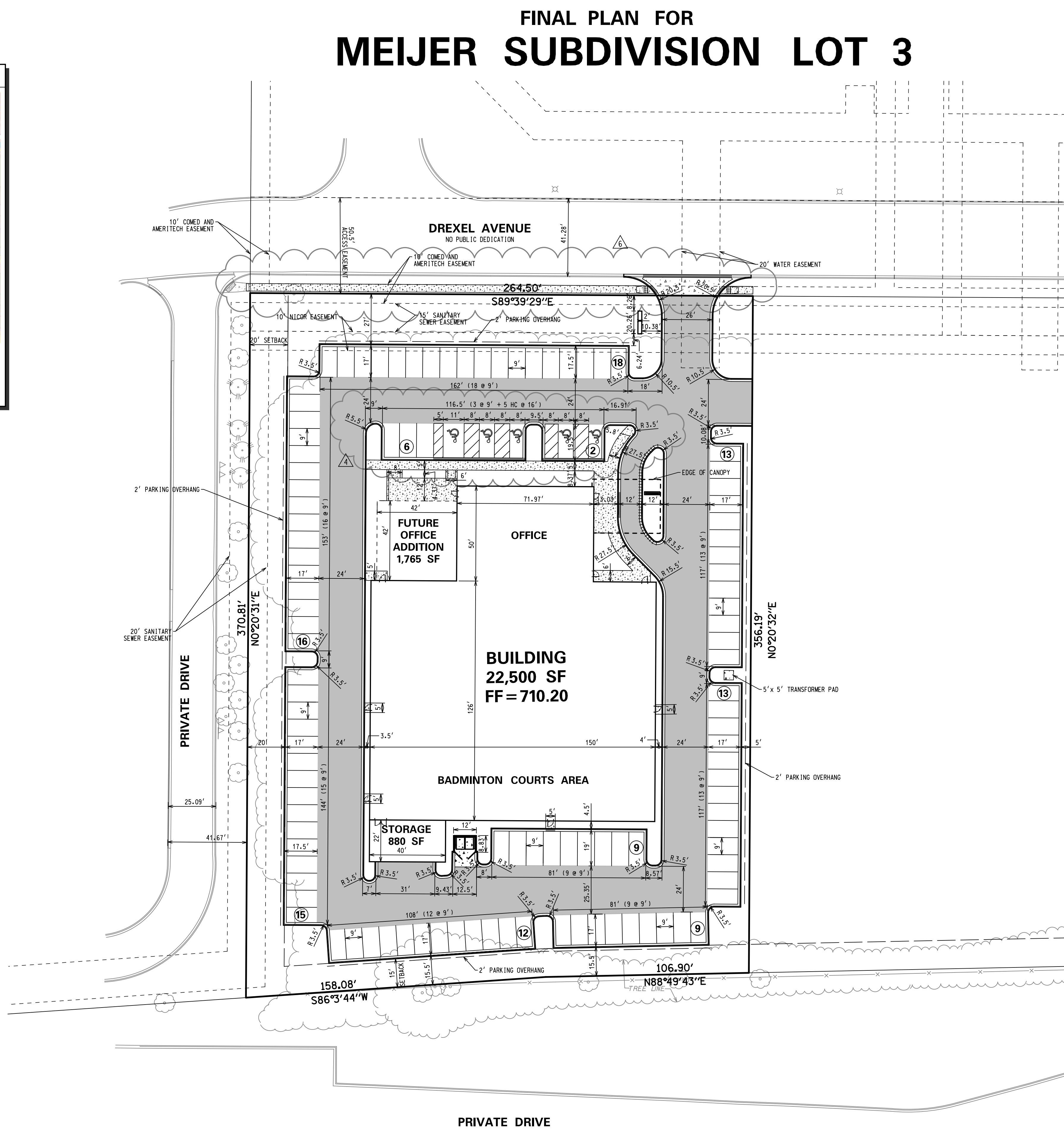
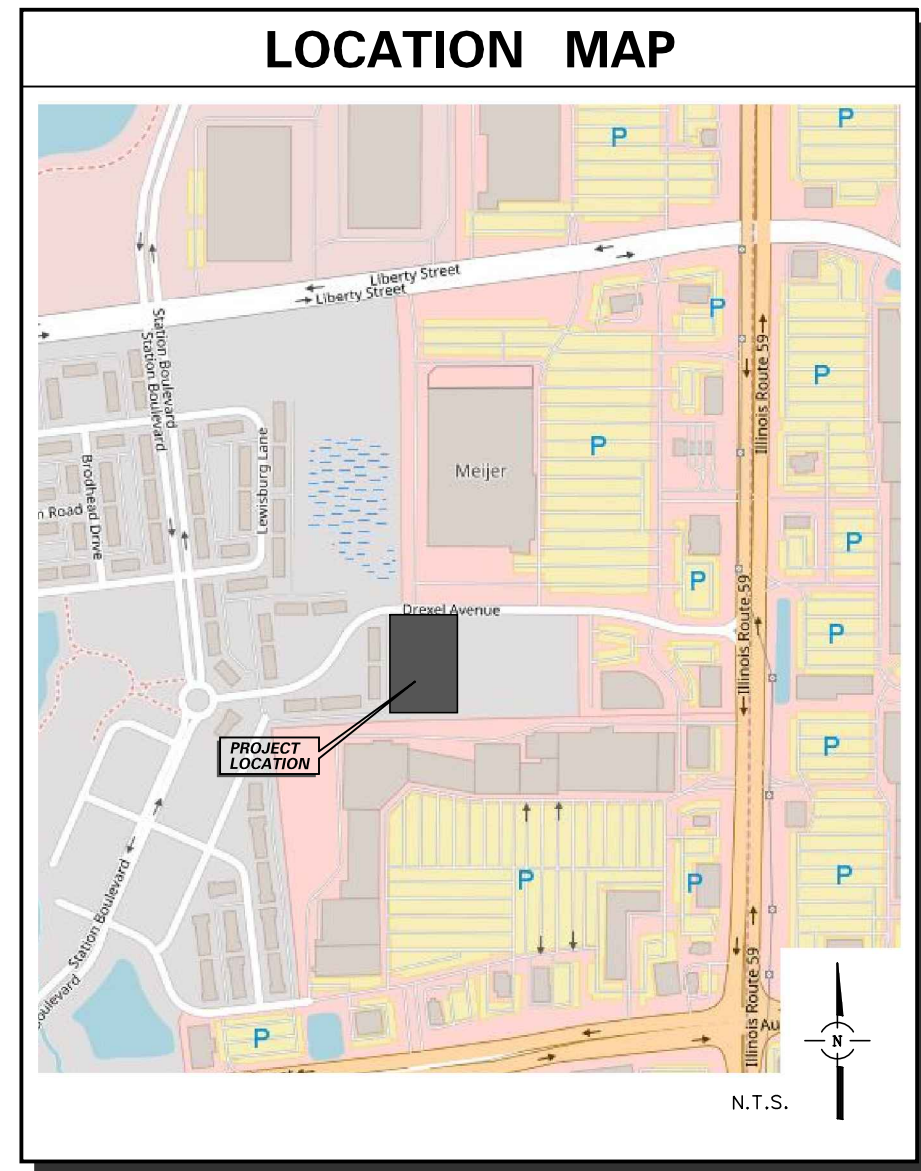


FINAL PLAN FOR MEIJER SUBDIVISION LOT 3



- LEGEND**
- HEAVY DUTY PAVEMENT
 - CONCRETE PAVEMENT OR APRON
 - STANDARD DUTY PAVEMENT
 - CONCRETE SIDEWALK
 - CONCRETE SIDEWALK
HC RAMP (5' WIDE UNLESS NOTED)
 - B-6.12 STANDARD CURB AND GUTTER
(PITCH IN)
 - B-6.12 REVERSED PITCH CURB AND GUTTER
(PITCH OUT)
 - DEPRESSED CURB & GUTTER

NOTE: ALL DIMENSIONS ARE TO THE FACE OF CURB UNLESS NOTED OTHERWISE.

- LEGEND**
- EXISTING STORM SEWER
 - EXISTING SANITARY SEWER
 - EXISTING WATERMAIN
 - EXISTING OVERHEAD WIRES
 - PROPOSED STORM SEWER
 - PROPOSED SANITARY SEWER
 - PROPOSED WATERMAIN
 - PROPOSED FIRE HYDRANT
 - PROPOSED PRESSURE CONNECTION
 - PROPOSED INLET
 - PROPOSED CATCH BASIN
 - PROPOSED MANHOLE
 - PROPOSED SANITARY CLEANOUT
 - LIGHT POLES
 - LIGHT MOUNTED ON BUILDING
 - PROPOSED 8' HIGH WOOD FENCE
 - B-6.12 STANDARD CURB AND GUTTER
(PITCH IN)
 - B-6.12 REVERSED PITCH CURB AND GUTTER
(PITCH OUT)
 - BARRIER CURB
 - DEPRESSED CURB & GUTTER

Development Data Table: Final Plan					
Description	Value	Unit	Description	Value	Unit
a) Tax/Parcel Identification Number(s) (PINs): 07-21-200-048-0000			j) Total Number of Residential Dwelling Units	0	units
			i. Gross Density	0.00	%/acre
			ii. Net Density	0.00	%/acre
			k) Number of Single Family Dwelling Units	0	units
			i. Gross Density	0.00	%/acre
			ii. Net Density	0.00	%/acre
b) Proposed land use(s): Multi-use sports facility			iii. Unit Square Footage (average)	0	square feet
			iv. Bedroom Mix	0%	% 1 bdr
				0%	% 2 bdr
				0%	% 3 bdr
				0%	% 4 bdr
c) Total Property Size	2.25091827	Acres	v. Number of Single Family Corner Lots	0	units
	88750	Square feet	vi. Number of Single Family Attached Dwelling Units	0	units
d) Total Lot Coverage	69647	Square feet	i. Gross Density	0.00	%/acre
Buildings and pavement	71%	Percent	ii. Net Density	0.00	%/acre
e) Open space / landscaping	28410	Square feet	iii. Unit Square Footage (average)	0	square feet
f) Land to be dedicated to the School District	0	Acres	iv. Bedroom Mix	0%	% 1 bdr
g) Land to be dedicated to the Park District	0	Acres		0%	% 2 bdr
				0%	% 3 bdr
				0%	% 4 bdr
				0%	% 5 bdr
h) Number of parking spaces provided (individually accessible)	113	spaces	m) Number of Multifamily Dwelling Units	0	units
i. surface parking lot	113	spaces	i. Gross Density	0.00	%/acre
perpendicular	103	spaces	ii. Net Density	0.00	%/acre
parallel	0	spaces	iii. Unit Square Footage (average)	0	square feet
angled	0	spaces	iv. Bedroom Mix	0%	% 1 bdr
handicapped	0	spaces		0%	% 2 bdr
ii. enclosed	0	spaces		0%	% 3 bdr
iii. bike	0	spaces		0%	% 4 bdr
				0%	% 5 bdr
i) Number of buildings	1	building			
i. Number of stories	1	stories			
ii. Building Square Footage (typical)	22500	square feet			
iii. Square Footage of retail floor area	0	square feet			
iv. First Floor Building Square Footage (typical)	22500	square feet			

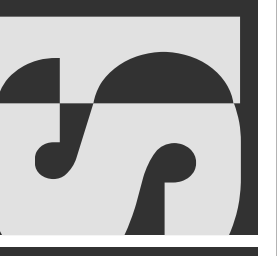
OWNER/PETITIONER:
Helen Zhen - Egret Badminton
12511 Basswood Road
Schaumburg, IL 60173

NO.	DATE	REVISIONS	REMARKS
6	11/07/17	REVISIONS PER COA - ENGINEERING, KOSWCD	
5	10/26/17	REVISIONS PER FIRE DEPT. - REV. 4	
2	10/18/17	PERMIT SUBMITTALS - REV. 3	
1	10/03/17	PERMIT SUBMITTALS - FOUNDATION - REV. 1	

FINAL PLAN
MEIJER SUBDIVISION LOT 3
EGRET BADMINTON CENTER
708 N. ROUTE 59, AURORA, IL

CONSULTING ENGINEERS
SITE DEVELOPMENT ENGINEERS
LAND SURVEYORS

9575 W. Higgins Road, Suite 700,
Rosemont, Illinois 60018
Phone: (847) 676-4060 Fax: (847) 676-4065



FILENAME:
9848 FINAL SITE PLAN

DATE:
09/25/17

JOB NO.
9848

SHEET
FP
1 OF 1