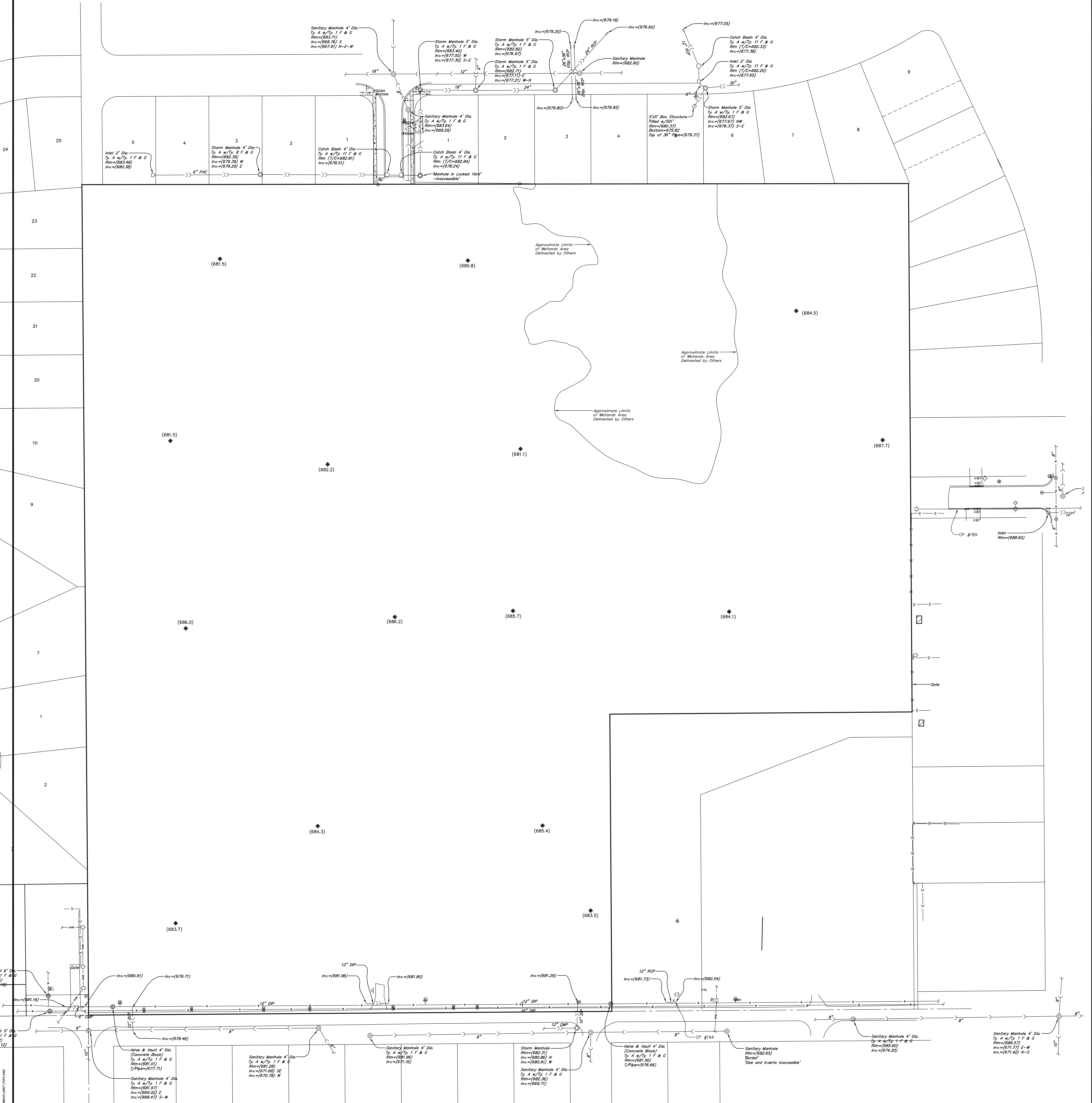
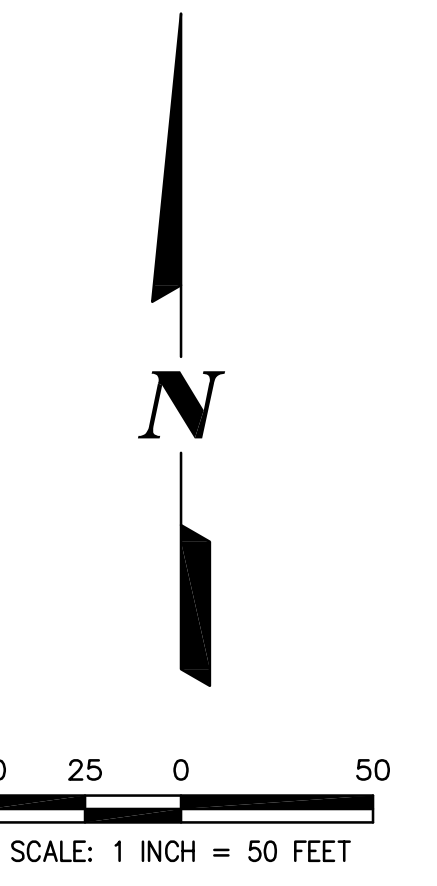


TOPOGRAPHIC SURVEY

OF
LEGAL DESCRIPTION:
COMMON ADDRESS:
PARCEL INDEX NUMBER:



BENCHMARK CONTROL POINTS

CONTROL POINTS:
CP #189: SET "4" ON TOP CONCRETE CURB ON THE SOUTH SIDE OF KENILWORTH PLACE APPROXIMATELY 75 FEET EAST OF AN EASTERLY LINE OF THE SUBJECT SITE AND APPROXIMATELY 19 FEET SOUTH OF THE CENTERLINE OF KENILWORTH PLACE.
NORTHING: 1852987.61
EASTING: 975931.17
ELEVATION: 689.95 NAVD88
CP #194: SET "4" ON TOP OF A 12 INCH REINFORCED CONCRETE PIPE ON THE NORTH SIDE OF PRAIRIE STREET APPROXIMATELY 102 FEET EAST OF AN EASTERLY LINE OF THE SUBJECT PROPERTY AND APPROXIMATELY 14 FEET NORTH OF THE CENTERLINE OF PRAIRIE STREET.
NORTHING: 1852199.20
EASTING: 975480.36
ELEVATION: 683.23 NAVD88

PREPARED BY:
CEMCON, Ltd.
Consulting Engineers, Land Surveyors & Planners
2280 White Oak Circle, Suite 100 Aurora, Illinois
6302-9675 TH. 630.862.2100 FAX. 630.862.2199
E-Mail: codd@cemcon.com Website: www.cemcon.com
DISC NO.: 608.086 FILE NAME: TOPO
DRAWN BY: DRAWN BY FLD, BK. / PG. NO.: BK./PG.
COMPLETION DATE: 10-6-23 JOB NO.: 608.086
PROJECT REFERENCE:
CHECKED BY:
REVISIONS: