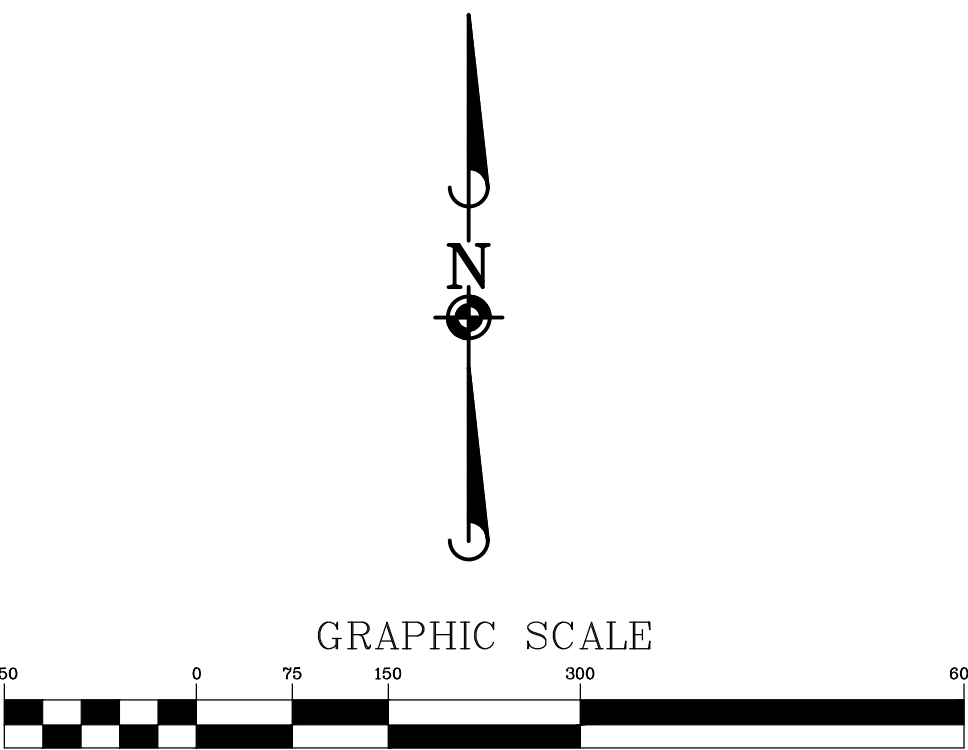


ALTA/NSPS LAND TITLE SURVEY

LINE TABLE		
LINE	BEARING	LENGTH
L1	S48°25'06"E	59.77'
L2	S37°21'15"E	59.77'
L3	S26°17'25"E	59.77'
L4	S15°33'34"E	59.77'
L5	90°04'49"E	59.77'
L6	S06°54'07"W	59.77'
L7	S17°57'50"E	59.77'
L8	S29°01'47"E	59.77'
L9	S38°49'39"E	63.58'
L10	S49°50'24"E	125.00'
L11	S40°09'36"E	16.80'
L12	N54°05'03"W	125.00'
L13	S32°34'25"W	77.54'
L14	S26°07'46"E	74.42'
L15	S23°56'48"E	132.00'
L16	S25°10'33"W	63.60'
L17	90°00'16"E	125.00'
L18	N54°38'12"E	125.00'
L19	S41°17'19"E	58.84'
L20	S53°08'21"E	58.84'

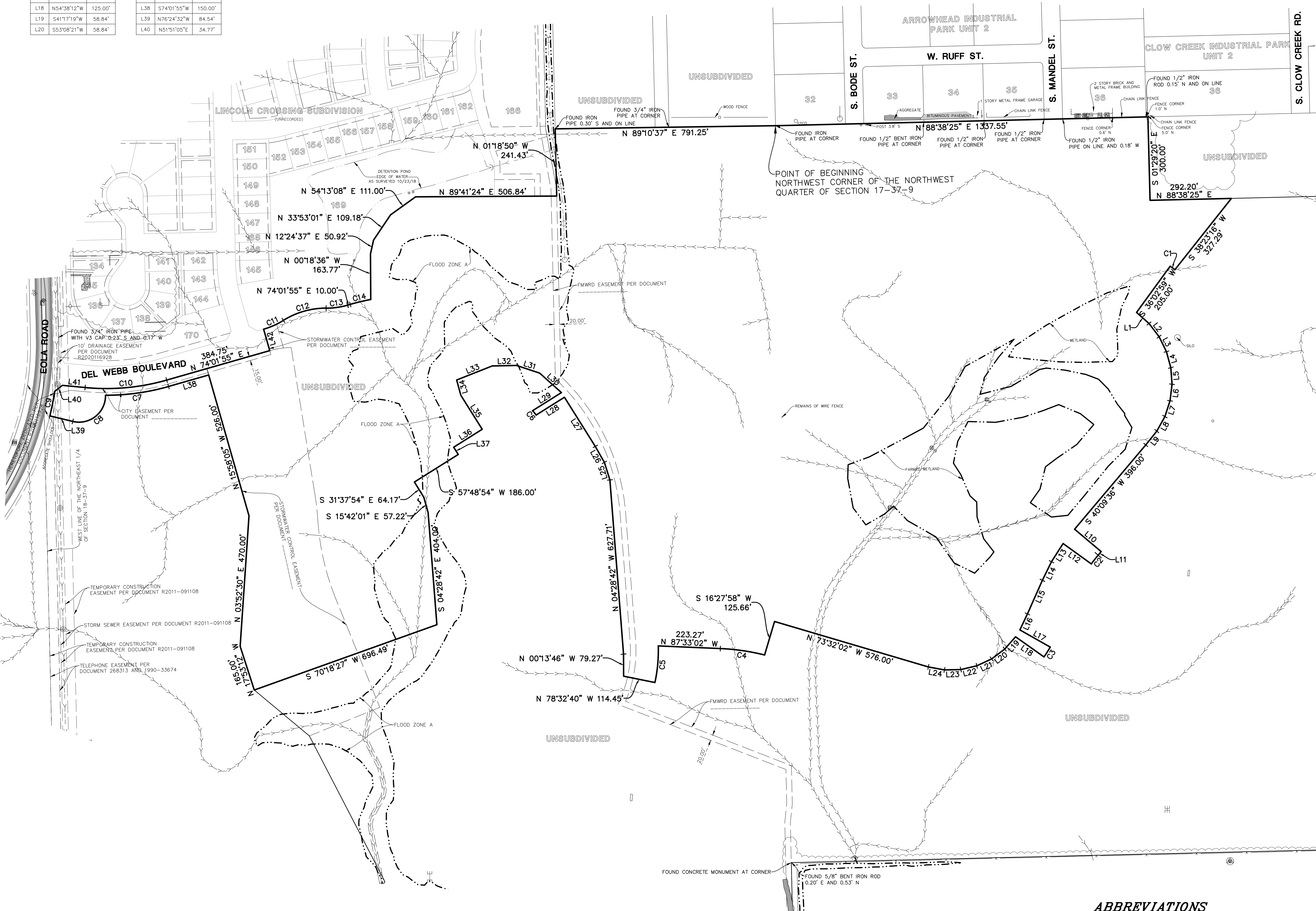
LINE	BEARING	LENGTH
L21	S64°59'22"W	58.84'
L22	S76°50'24"W	58.84'
L23	S86°14'26"W	58.84'
L24	N97°23'33"W	58.84'
L25	N17°28'08"E	66.03'
L26	N29°30'59"W	66.17'
L27	N32°11'06"E	208.32'
L28	S57°48'18"E	120.19'
L29	N48°41'52"E	122.80'
L30	N58°12'28"W	104.85'
L31	N77°59'34"W	87.41'
L32	S88°50'04"E	87.41'
L33	S68°23'19"W	137.29'
L34	S151°40'09"E	57.02'
L35	N32°11'06"E	144.08'
L36	S57°48'18"E	121.00'
L37	N32°11'06"E	30.67'
L38	S74°01'55"W	150.00'
L39	N76°24'32"E	84.54'
L40	N51°05'10"E	34.77'

CURVE TABLE				
CURVE	RADIUS	LENGTH	CHORD BEARING	CHORD
C1	515.00'	21.01'	N52°46'53"W	21.01'
C2	540.00'	40.00'	S38°02'17"W	39.99'
C3	410.00'	41.87'	N32°26'16"E	41.85'
C4	790.00'	160.91'	N81°42'56"W	160.63'
C5	540.00'	132.30'	N05°13'41"E	131.96'
C6	133.00'	20.19'	N39°36'30"W	20.17'
C7	814.00'	229.61'	S82°06'46"W	228.85'
C8	955.00'	173.48'	S51°16'36"W	150.36'
C9	1090.00'	89.95'	N111°13'37"E	89.93'
C10	790.00'	295.96'	N84°45'51"E	294.23'
C11	280.00'	78.05'	N66°02'48"E	77.79'
C12	290.00'	161.67'	S74°01'55"W	159.58'
C13	280.00'	78.05'	N82°01'02"E	77.79'
C14	840.00'	75.70'	S76°36'49"W	75.68'



BASIS OF BEARINGS

COORDINATES AND BEARINGS ARE BASED UPON THE ILLINOIS STATE PLANNED
COORDINATE SYSTEM, EAST ZONE (NAD 83), ADJUSTED TO GROUND VALUES
AS ESTABLISHED BY A REAL-TIME KINEMATIC (RTK) GLOBAL NAVIGATION
SATELLITE SYSTEM (GNSS) UTILIZING THE TRIMBLE VRS NOW NETWORK.



ABBREVIATIONS

FMWRD = FOX METRO WATER RECLAMATION DISTRICT

[illegible]

Manhard
CONSULTING LTD.

Don Quixote Park, Suite 200, Lincolnton, N. 20269 919.877.6243/5000 919.877.6243/0265 manhard.com

Civil Engineers • Surveyors • Water Resources Engineers • Water & Wastewater Engineers
Construction Managers • Environmental Scientists • Landscape Architects • Planners

AURORA, ILLINOIS

LINCOLN PRAIRIE BY DEL WEBB PHASE 1

ALTA/NSPS LAND TITLE SURVEY

PROJ. MGR.: JID
 PROJ. ASSOC.: PGA
 DRAWN BY: PGA
 DATE: 08/31/20
 SCALE: 1"=150'
 SHEET
 2 OF 2
 PULAU101

Dwg Name: P:\Pulau101\dwg\Surv\Final Drawings\Alta Survey\Del Webb Phase 1 ALTA\02-PULAU101-SA-DEL WEBB-PH1.dwg Updated By: ponderson
October 15, 2021 - 11:03

*NOTE: 5/8 IRON RODS HAVE BEEN SET AT ALL CORNERS

© 2019 MANHARD CONSULTING LTD. ALL RIGHTS RESERVED