

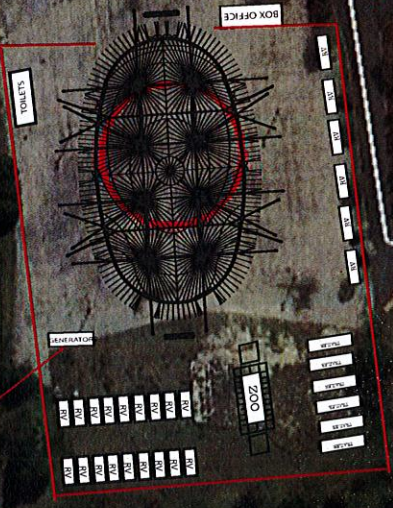
Fox Valley Mall

Write a description for your map.

- Legend**
- Feature 1
 - Feature 2

2X 400 KW DIESEL GENERATORS ON A TRAILER
2X FIRE EXTINGUISHERS

over flow
rv's and
trailers



Rain-Tree-Rd

Fox-Valley-Center-Dr

Executive-Dr

S-Commons-Dr

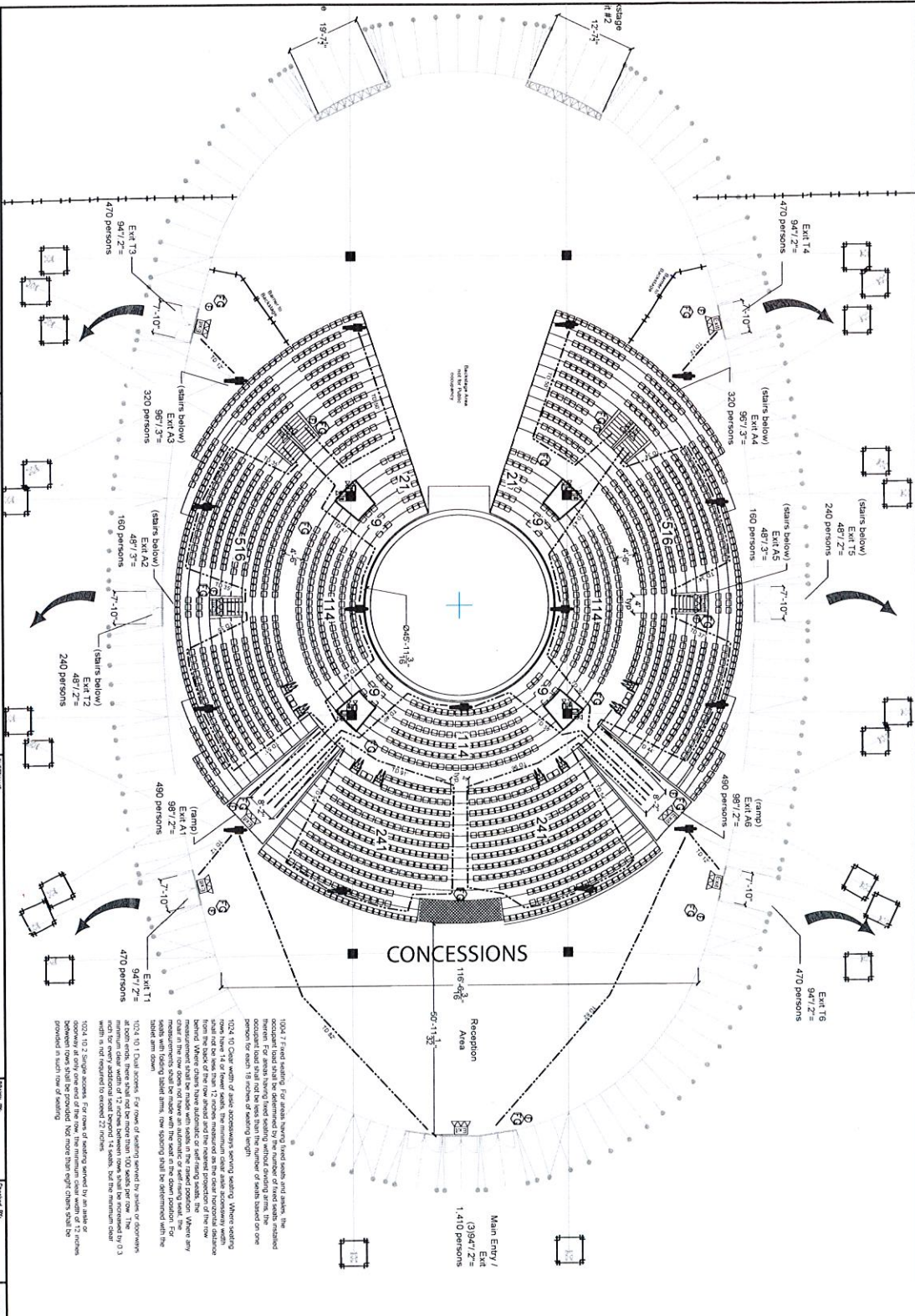
Gregory-St

Google earth

© 2015 Google

500 ft





Circo H Vazquez

Circo H Vazquez

Seating Egress Plan

DATE: 9/12/14
SCALE: NTS

99 Bank Street #7L
New York, NY 10014
Tel: 212.243.6984
Fax: 212.352.1701
www.aformny.com



- LEGEND**
- Fire exit with hand signal emergency lighting
 - Emergency lighting
 - Travel Distance
 - Fire extinguisher
 - 100 abc
 - EXIT Exit Board

2008 NEW YORK CITY BUILDING CODE
SECTION BC 203.2 SEATING GROUP 2
Act Assembly seats, totally with fixed seating, including balconies.

SECTION BC 1008 EGRESS WIDTH
TABLE 1008.1 EGRESS WIDTH PER OCCUPANT SERVED
OCCUPANCY A
OTHER COMPONENTS (includes per occupant): 0.2

1024.4.2 Width of means of egress for outdoor
means of egress shall be determined by the total
occupant load served by the egress element multiplied by
0.06 (1.57 min) where egress is by ramps,
corridors, tunnels or vaulted.

1024.10.1.1 Exit capacity. For means of egress served by an aisle or
aisleway, the minimum clear width shall be not less than 18 inches
at each exit. There shall not be more than 100 seats per row. The
width of the aisleway shall be not less than 22 inches. The minimum clear
width is not required to exceed 22 inches.

1024.10.1.2 Single aisles. First rows of seating served by an aisle or
aisleway shall be provided with not more than eight chairs per row
provided to assist view of seating.

1024.10.1.3 Exit capacity. For means of egress served by an aisle or
aisleway, the minimum clear width shall be not less than 18 inches
at each exit. There shall not be more than 100 seats per row. The
width of the aisleway shall be not less than 22 inches. The minimum clear
width is not required to exceed 22 inches.

1024.10.1.4 Exit capacity. For means of egress served by an aisle or
aisleway, the minimum clear width shall be not less than 18 inches
at each exit. There shall not be more than 100 seats per row. The
width of the aisleway shall be not less than 22 inches. The minimum clear
width is not required to exceed 22 inches.

1024.10.1.5 Exit capacity. For means of egress served by an aisle or
aisleway, the minimum clear width shall be not less than 18 inches
at each exit. There shall not be more than 100 seats per row. The
width of the aisleway shall be not less than 22 inches. The minimum clear
width is not required to exceed 22 inches.

1024.10.1.6 Exit capacity. For means of egress served by an aisle or
aisleway, the minimum clear width shall be not less than 18 inches
at each exit. There shall not be more than 100 seats per row. The
width of the aisleway shall be not less than 22 inches. The minimum clear
width is not required to exceed 22 inches.

1024.10.1.7 Exit capacity. For means of egress served by an aisle or
aisleway, the minimum clear width shall be not less than 18 inches
at each exit. There shall not be more than 100 seats per row. The
width of the aisleway shall be not less than 22 inches. The minimum clear
width is not required to exceed 22 inches.

1024.10.1.8 Exit capacity. For means of egress served by an aisle or
aisleway, the minimum clear width shall be not less than 18 inches
at each exit. There shall not be more than 100 seats per row. The
width of the aisleway shall be not less than 22 inches. The minimum clear
width is not required to exceed 22 inches.

1024.10.1.9 Exit capacity. For means of egress served by an aisle or
aisleway, the minimum clear width shall be not less than 18 inches
at each exit. There shall not be more than 100 seats per row. The
width of the aisleway shall be not less than 22 inches. The minimum clear
width is not required to exceed 22 inches.

1024.10.1.10 Exit capacity. For means of egress served by an aisle or
aisleway, the minimum clear width shall be not less than 18 inches
at each exit. There shall not be more than 100 seats per row. The
width of the aisleway shall be not less than 22 inches. The minimum clear
width is not required to exceed 22 inches.

1024.10.1.11 Exit capacity. For means of egress served by an aisle or
aisleway, the minimum clear width shall be not less than 18 inches
at each exit. There shall not be more than 100 seats per row. The
width of the aisleway shall be not less than 22 inches. The minimum clear
width is not required to exceed 22 inches.

1024.10.1.12 Exit capacity. For means of egress served by an aisle or
aisleway, the minimum clear width shall be not less than 18 inches
at each exit. There shall not be more than 100 seats per row. The
width of the aisleway shall be not less than 22 inches. The minimum clear
width is not required to exceed 22 inches.

1024.10.1.13 Exit capacity. For means of egress served by an aisle or
aisleway, the minimum clear width shall be not less than 18 inches
at each exit. There shall not be more than 100 seats per row. The
width of the aisleway shall be not less than 22 inches. The minimum clear
width is not required to exceed 22 inches.

1024.10.1.14 Exit capacity. For means of egress served by an aisle or
aisleway, the minimum clear width shall be not less than 18 inches
at each exit. There shall not be more than 100 seats per row. The
width of the aisleway shall be not less than 22 inches. The minimum clear
width is not required to exceed 22 inches.

1024.10.1.15 Exit capacity. For means of egress served by an aisle or
aisleway, the minimum clear width shall be not less than 18 inches
at each exit. There shall not be more than 100 seats per row. The
width of the aisleway shall be not less than 22 inches. The minimum clear
width is not required to exceed 22 inches.

1024.10.1.16 Exit capacity. For means of egress served by an aisle or
aisleway, the minimum clear width shall be not less than 18 inches
at each exit. There shall not be more than 100 seats per row. The
width of the aisleway shall be not less than 22 inches. The minimum clear
width is not required to exceed 22 inches.

1024.10.1.17 Exit capacity. For means of egress served by an aisle or
aisleway, the minimum clear width shall be not less than 18 inches
at each exit. There shall not be more than 100 seats per row. The
width of the aisleway shall be not less than 22 inches. The minimum clear
width is not required to exceed 22 inches.

1024.10.1.18 Exit capacity. For means of egress served by an aisle or
aisleway, the minimum clear width shall be not less than 18 inches
at each exit. There shall not be more than 100 seats per row. The
width of the aisleway shall be not less than 22 inches. The minimum clear
width is not required to exceed 22 inches.

1024.10.1.19 Exit capacity. For means of egress served by an aisle or
aisleway, the minimum clear width shall be not less than 18 inches
at each exit. There shall not be more than 100 seats per row. The
width of the aisleway shall be not less than 22 inches. The minimum clear
width is not required to exceed 22 inches.

1024.10.1.20 Exit capacity. For means of egress served by an aisle or
aisleway, the minimum clear width shall be not less than 18 inches
at each exit. There shall not be more than 100 seats per row. The
width of the aisleway shall be not less than 22 inches. The minimum clear
width is not required to exceed 22 inches.

1024.10.1.21 Exit capacity. For means of egress served by an aisle or
aisleway, the minimum clear width shall be not less than 18 inches
at each exit. There shall not be more than 100 seats per row. The
width of the aisleway shall be not less than 22 inches. The minimum clear
width is not required to exceed 22 inches.

1024.10.1.22 Exit capacity. For means of egress served by an aisle or
aisleway, the minimum clear width shall be not less than 18 inches
at each exit. There shall not be more than 100 seats per row. The
width of the aisleway shall be not less than 22 inches. The minimum clear
width is not required to exceed 22 inches.

1024.10.1.23 Exit capacity. For means of egress served by an aisle or
aisleway, the minimum clear width shall be not less than 18 inches
at each exit. There shall not be more than 100 seats per row. The
width of the aisleway shall be not less than 22 inches. The minimum clear
width is not required to exceed 22 inches.

1024.10.1.24 Exit capacity. For means of egress served by an aisle or
aisleway, the minimum clear width shall be not less than 18 inches
at each exit. There shall not be more than 100 seats per row. The
width of the aisleway shall be not less than 22 inches. The minimum clear
width is not required to exceed 22 inches.

1024.10.1.25 Exit capacity. For means of egress served by an aisle or
aisleway, the minimum clear width shall be not less than 18 inches
at each exit. There shall not be more than 100 seats per row. The
width of the aisleway shall be not less than 22 inches. The minimum clear
width is not required to exceed 22 inches.