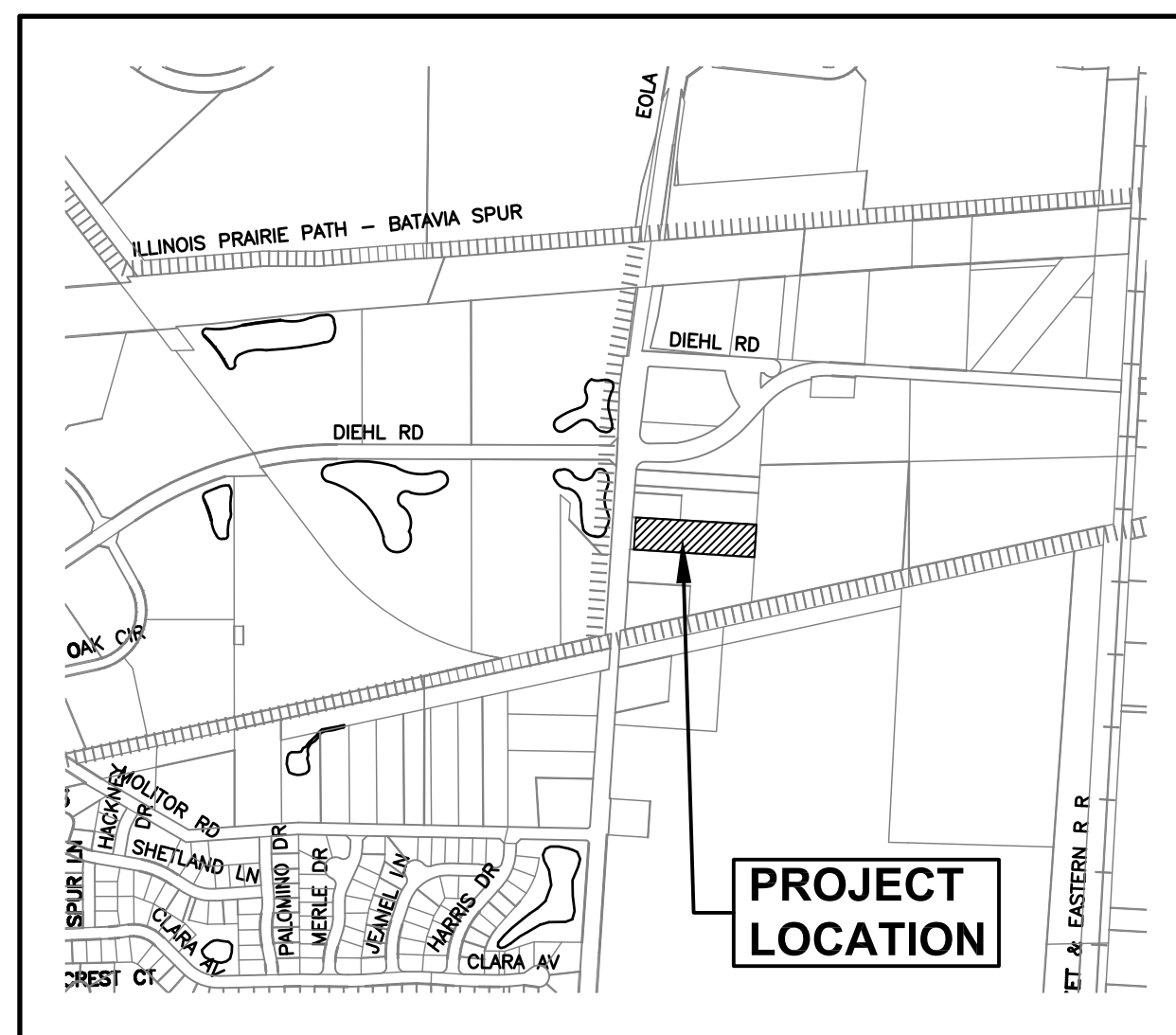
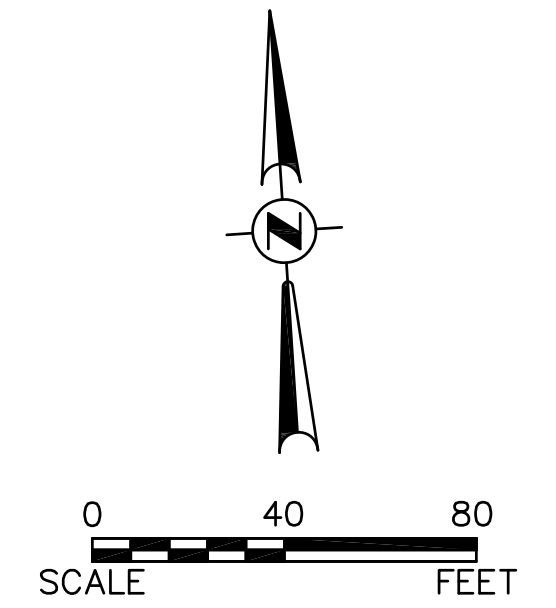


FIRE ACCESS PLAN

FOR LOT 2 OF SCIENTEL SOLUTIONS SUBDIVISION

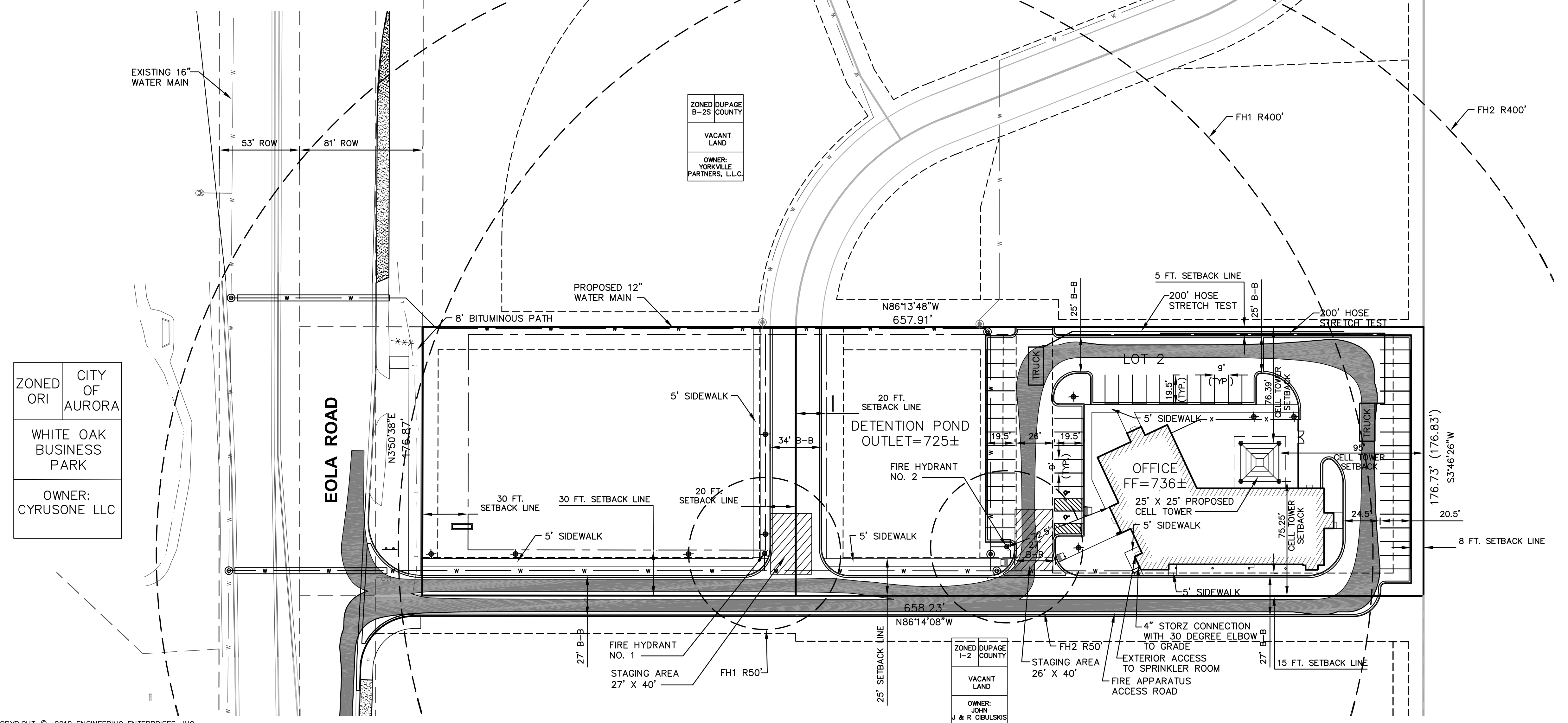
CITY OF AURORA DUPAGE COUNTY, ILLINOIS

Fire Access Plan Data Table		
Description	Value	Unit
a) Building Height	30.00	feet
b) Building Square Footage (typical)	16,032	square feet
c) Building fire suppression information including any proposed use of sprinkler systems, fire alarm systems, whether fire extinguishers are needed: Proposed to be fully sprinklered		
d) General description of business to be conducted within each building including: will there be rack storage in the building, will there be storage of combustible materials over twelve feet in height, clearance of sprinkler heads and stored materials (18 inch minimum): General office supporting Petitioner's network and telecommunications operation in main building with storage and light assembly in warehouse portion of building		



LOCATION MAP
1" = 1,000'

EXISTING	DESCRIPTION	PROPOSED
	SANITARY SEWER	
	STORM SEWER	
	END SECTION	
	WATER MAIN & SIZE	
	WATER SERVICE & BOX	
	SEWER SERVICE	
	CONTOUR	
	GAS MAIN	
	TELEPHONE CABLE	
	FIBER OPTIC	
	SILT FENCE	
	MANHOLE	
	CATCH BASIN	
	INLET	
	HYDRANT	
	VALVE VAULT	
	TREE	
	ELEVATION	
	TRENCH BACKFILL	
	STREET LIGHT	
	SIGNS	
	FOUND IRON PIPE	
	GUY WIRE	
	FLAG POLE	
	UTILITY POLE	
	UTILITY PEDESTAL	
	HANDHOLE	
	STRAW BALES	
	ITEM DESIGNATED FOR REMOVAL	
	TREE PROTECTION REQUIRED	
	BITUMINOUS PAVEMENT	
	CONCRETE	
	GRAVEL	



ZONED ORI	CITY OF AURORA
WHITE OAK BUSINESS PARK	
OWNER: CYRUSONE LLC	

ZONED DUPAGE I-2	COUNTY
COMM ED ELECTRICAL SUB-STATION	
OWNER: COMMONWEALTH EDISON	

SETBACK RESTRICTIONS AS FOLLOWS:
30' SETBACK ALONG EOLA ROAD 5' SIDE AND REAR YARD SETBACKS FOR ALL OTHER LOT LINES.

NOTES:
1. ALL DIMENSIONS ARE TO BACK OF CURB UNLESS OTHERWISE STATED.

Printed: April 23, 2018 @ 4:35 PM By: Krcs Plung - Tab: XX Fire (22x34)
 COPYRIGHT © 2018 ENGINEERING ENTERPRISES, INC.

Engineering Enterprises, Inc.
 CONSULTING ENGINEERS
 52 Wheeler Road
 Sugar Grove, Illinois 60554
 630.466.6700 / www.eeiweb.com

sciente
 948 SPRINGER DRIVE, LOMBARD, ILLINOIS 60148

NO.	DATE	REVISIONS
4	4/23/18	PER FIRE MARSHALL COMMENTS
3	4/19/18	PER FIRE MARSHALL COMMENTS
2	4/12/18	PER FIRE MARSHALL COMMENTS
1	3/15/18	PER CITY COMMENTS

SCIENTEL SOLUTIONS
EOLA ROAD SITE
AURORA, ILLINOIS

FIRE ACCESS PLAN

DATE: APRIL 2018	
PROJECT NO: P16039	
FILE: P16039-FIRE	
SHEET 1 OF 1	