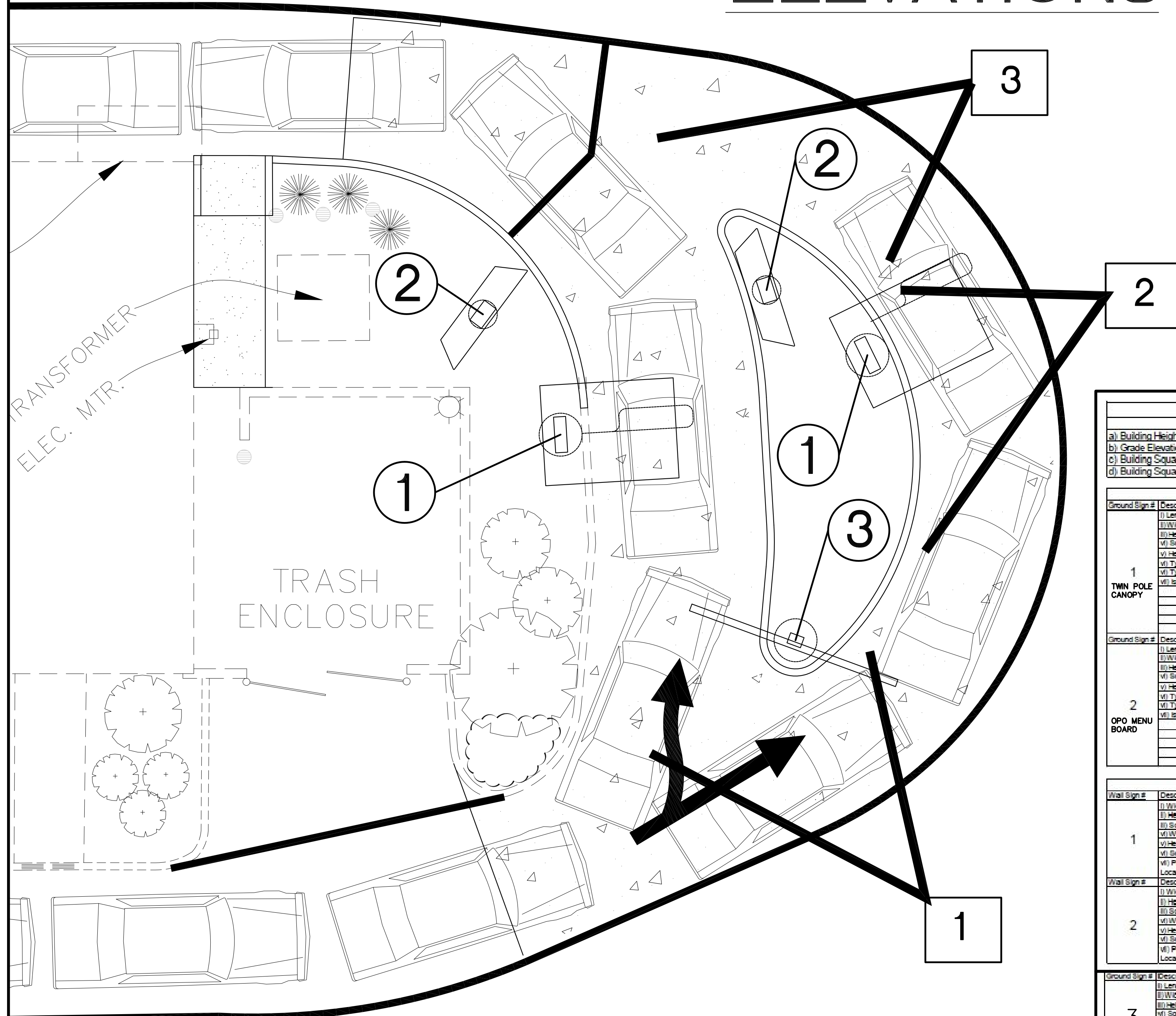
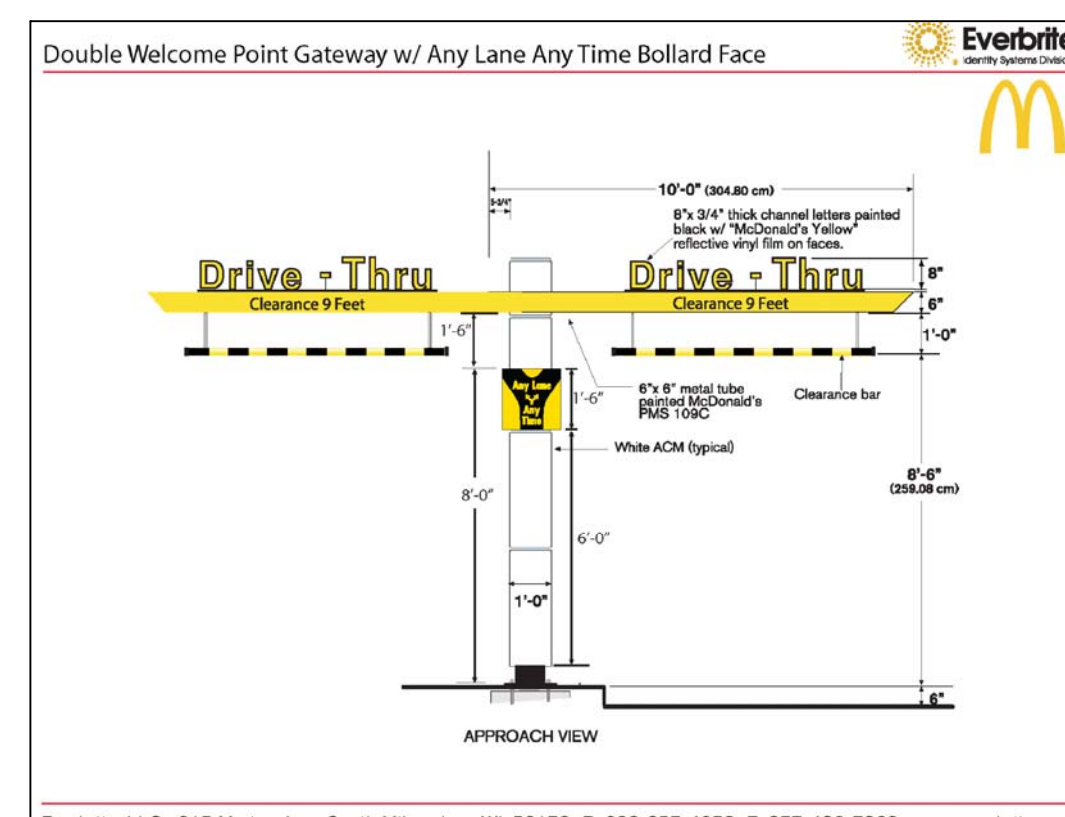
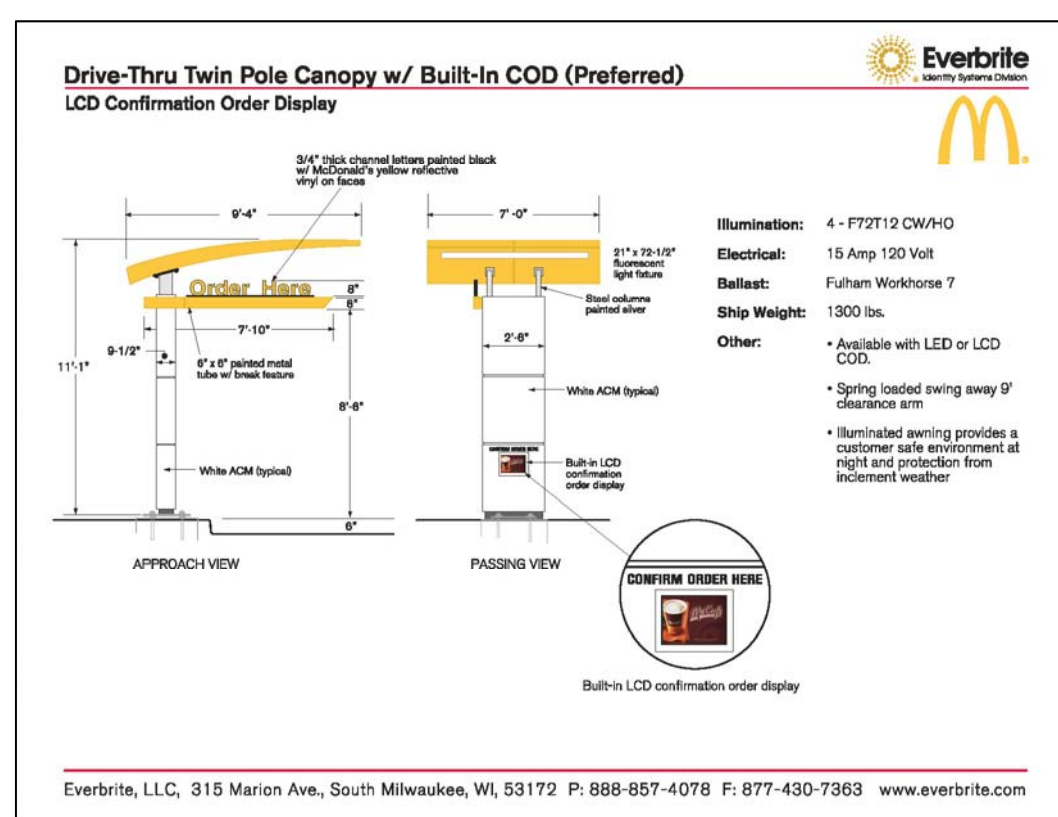


# ELEVATIONS



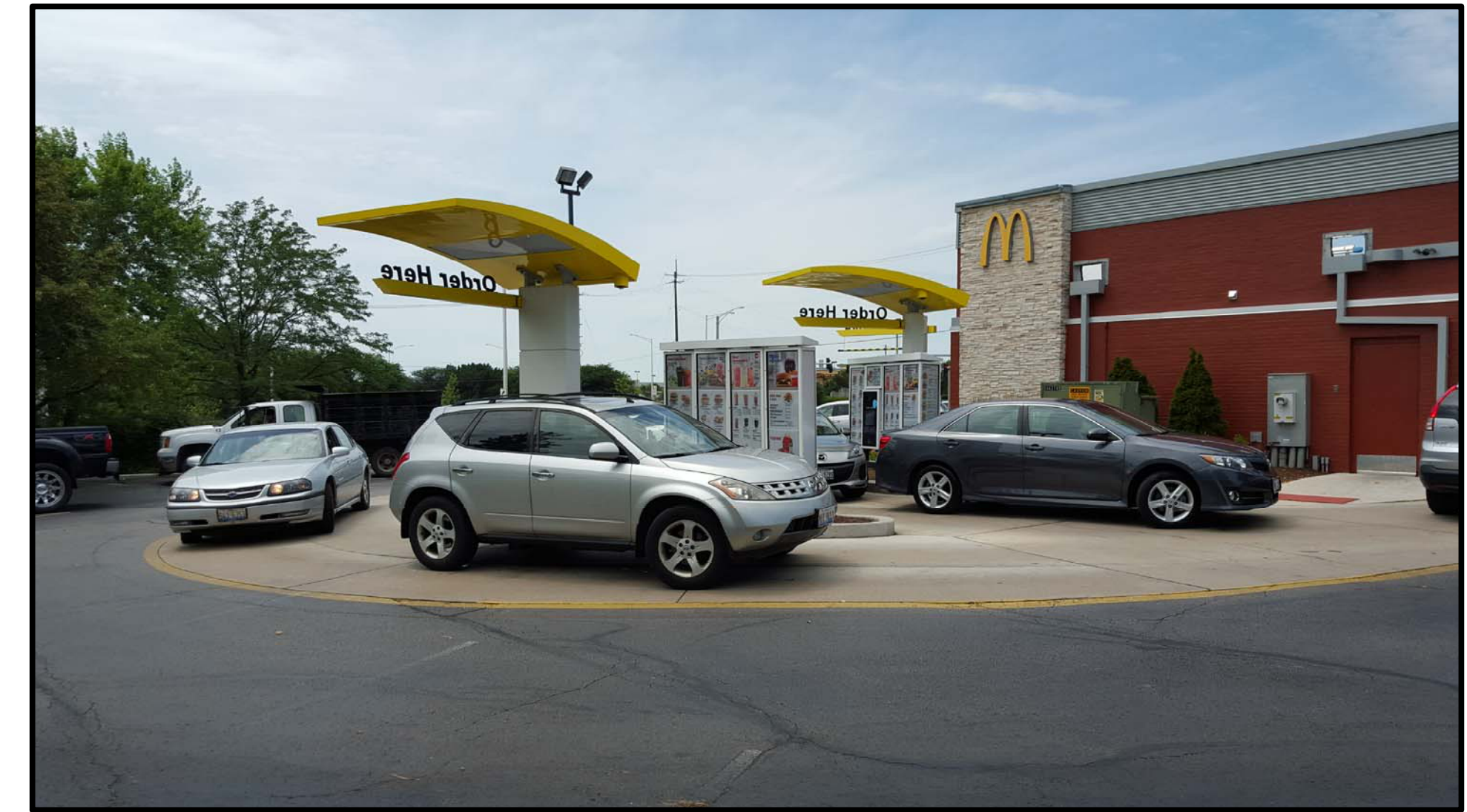
## DRIVE THRU SIGN LEGEND

- 1 McDONALD'S DRIVE THRU POLE CANOPY W/BUILT-IN COD
- 2 McDONALD'S OPO MENU BOARD
- 3 McDONALD'S DOUBLE WELCOME POINT GATEWAY W/ANY LANE TIME BOLLARD FACE



## SIDE BY SIDE DRIVE THRU VIEWS LEGEND

\*ACTUAL PHOTOS TAKEN AT DIFFERENT EXSITING McDONALD'S SIDE BY SIDE DRIVE-THRU



3



2



1

Elevation Data Table: Elevations		
Description	Value	Unit
a) Building Height	N/A	- Feet
b) Grade Elevation	N/A	- Feet
c) Building Square Footage by Floor	N/A	- Square Feet
d) Building Square Footage	3,540	- Square Feet

Signage Data Table: Ground Signage				
Ground Sign #	Description	Value	Unit	
1	(i) Length of street frontage - on which sign is located	N/A	- Feet	
	(ii) Width of Sign Face - "ORDER HERE"	5.38	- Feet	
	(iii) Height of Sign Face	0.87	- Feet	
	(iv) Square Footage of Sign Face	3.60	- Square Feet	
	(v) Height of Sign (overall)	N/A	- Feet	
	(vi) Type of Sign	PART OF TWIN POLE CANOPY	-	
	(vii) Type of Sign Base	PART OF TWIN POLE CANOPY	-	
	(viii) Is there a Digital Display	YES	-	
	If Yes then, Location of Digital Display on the sign		BOTTOM	-
	Height of Digital Display		12	- Feet
Width of Digital Display		12	- Feet	
Square Footage of Digital Display		1	- Square Feet	
Percent of Digital Display Sign Coverage		N/A	- Percent	

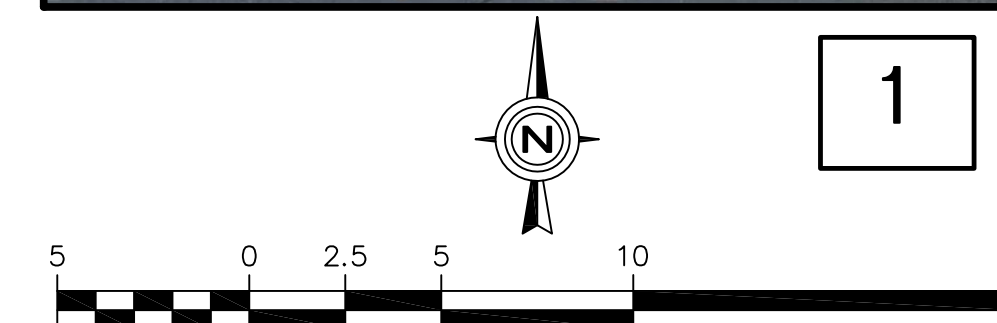
Signage Data Table: Wall Signage				
Wall Sign #	Description	Value	Unit	
1	(i) Width of Facade - on which sign is located	N/A	- Feet	
	(ii) Height of Facade - on which sign is located	N/A	- Feet	
	(iii) Square Footage of Facade - on which sign is located	N/A	- Square Feet	
	(iv) Width of Sign Face	N/A	- Feet	
	(v) Height of Sign Face	N/A	- Feet	
	(vi) Square Footage of Sign Face	N/A	- Square Feet	
	(vii) Percent of Sign Coverage - Facade on which sign is located	N/A	- Percent	
	If Yes then, Location of Digital Display on the sign		N/A	- Feet
	Height of Digital Display		N/A	- Feet
	Width of Digital Display		N/A	- Feet
Square Footage of Digital Display		N/A	- Square Feet	
Percent of Digital Display Sign Coverage		N/A	- Percent	

Signage Data Table: Wall Signage				
Wall Sign #	Description	Value	Unit	
2	(i) Width of Facade - on which sign is located	N/A	- Feet	
	(ii) Height of Facade - on which sign is located	N/A	- Feet	
	(iii) Square Footage of Facade - on which sign is located	N/A	- Square Feet	
	(iv) Width of Sign Face	N/A	- Feet	
	(v) Height of Sign Face	N/A	- Feet	
	(vi) Square Footage of Sign Face	N/A	- Square Feet	
	(vii) Percent of Sign Coverage - Facade on which sign is located	N/A	- Percent	
	If Yes then, Location of Digital Display on the sign		N/A	- Feet
	Height of Digital Display		N/A	- Feet
	Width of Digital Display		N/A	- Feet
Square Footage of Digital Display		N/A	- Square Feet	
Percent of Digital Display Sign Coverage		N/A	- Percent	

Signage Data Table: Wall Signage				
Wall Sign #	Description	Value	Unit	
3	(i) Width of Facade - on which sign is located	N/A	- Feet	
	(ii) Height of Facade - on which sign is located	N/A	- Feet	
	(iii) Square Footage of Facade - on which sign is located	N/A	- Square Feet	
	(iv) Width of Sign Face	N/A	- Feet	
	(v) Height of Sign Face	N/A	- Feet	
	(vi) Square Footage of Sign Face	N/A	- Square Feet	
	(vii) Percent of Sign Coverage - Facade on which sign is located	N/A	- Percent	
	If Yes then, Location of Digital Display on the sign		N/A	- Feet
	Height of Digital Display		N/A	- Feet
	Width of Digital Display		N/A	- Feet
Square Footage of Digital Display		N/A	- Square Feet	
Percent of Digital Display Sign Coverage		N/A	- Percent	



DRIVE-THRU SIGNAGE EXHIBIT FOR McDONALD'S-AURORA

DATE: 8.25.15  
 REVISIONS: PER. PRE-REVIEW FORMAT COMMENTS-AUGUST 18, 2015  
 NO. 1  
 Prepared For: McDonald's  
 4320 Winfield Road, Suite 400  
 Warrenville, IL 60555  
 DRIVE-THRU SIGNAGE EXHIBIT FOR McDONALD'S - AURORA  
 Lots 4, 5, and 6 of Stephenson's Addition  
 711 New York Street  
 Aurora, Illinois  
 Prepared By: Watermark Engineering Resources, Ltd.  
 2631 Ginger Woods Parkway, Suite 100, Aurora, IL 60502  
 phone 630-375-7800 fax 630-326-9500 www.watermark-engineering.com  
 CHECKED BY: J. MILLER  
 DESIGN BY: K. SACK  
 DRAWN BY: K. SACK  
 DATE: JULY 22, 2015  
 SCALE: 1" = 5'  
 PROJECT NO.: 15-016  
 1 of 1  
 LC #12-1792