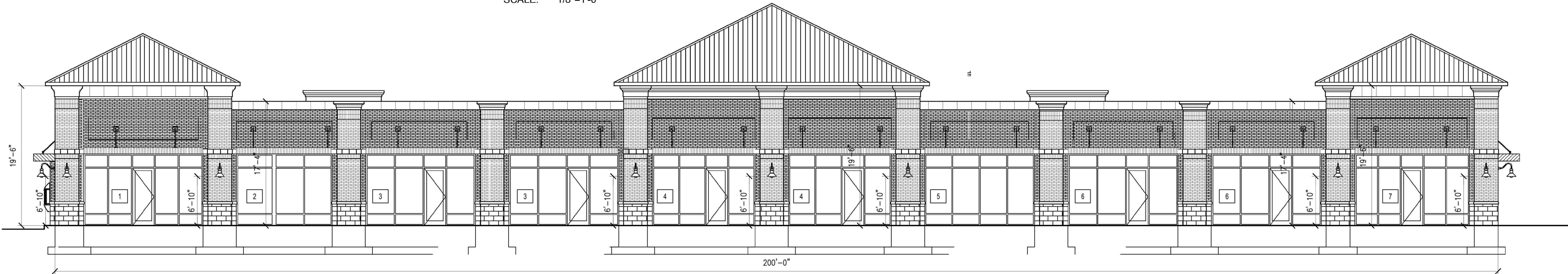


ELEVATIONS FOR LOT 2 IN PAS PLAZA SUBDIVISION

SCALE: 1/8"=1'-0"



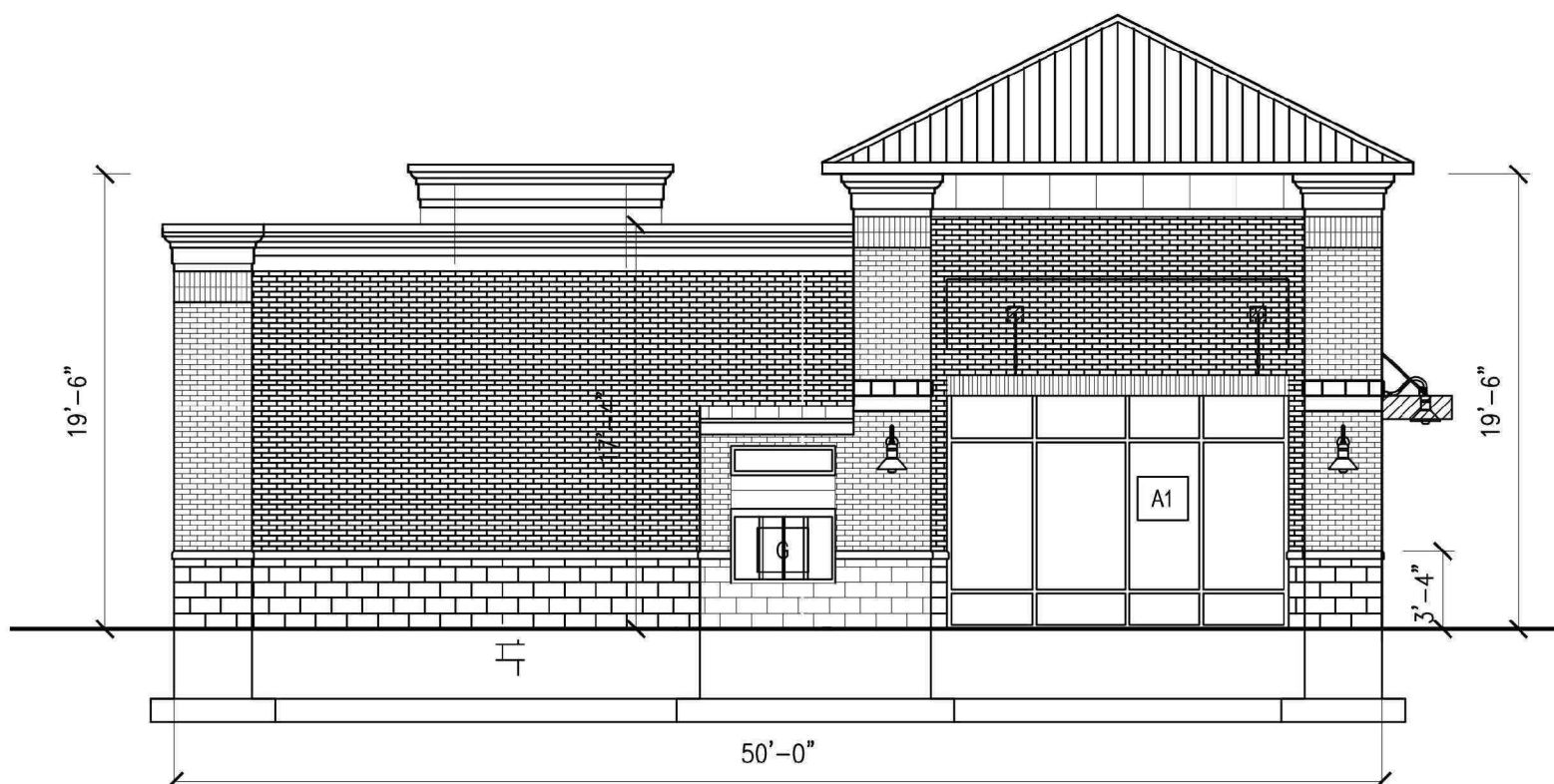
NORTH ELEVATION

SCALE: 1/8"=1'-0"



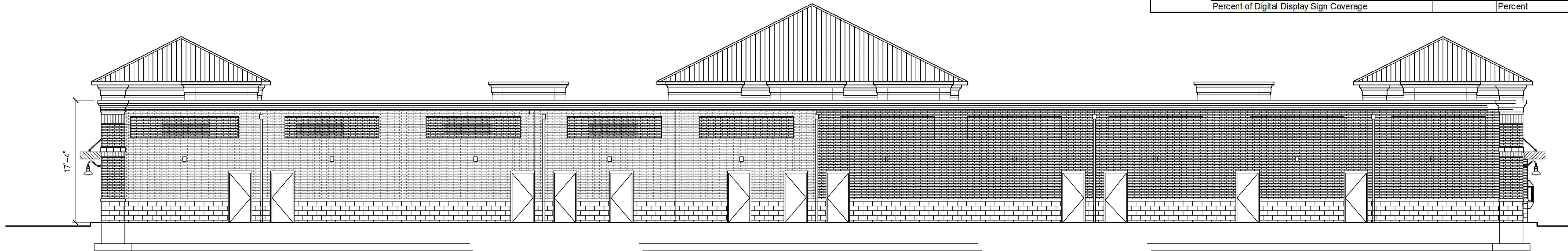
WEST ELEVATION

SCALE: 1/8"=1'-0"



EAST ELEVATION

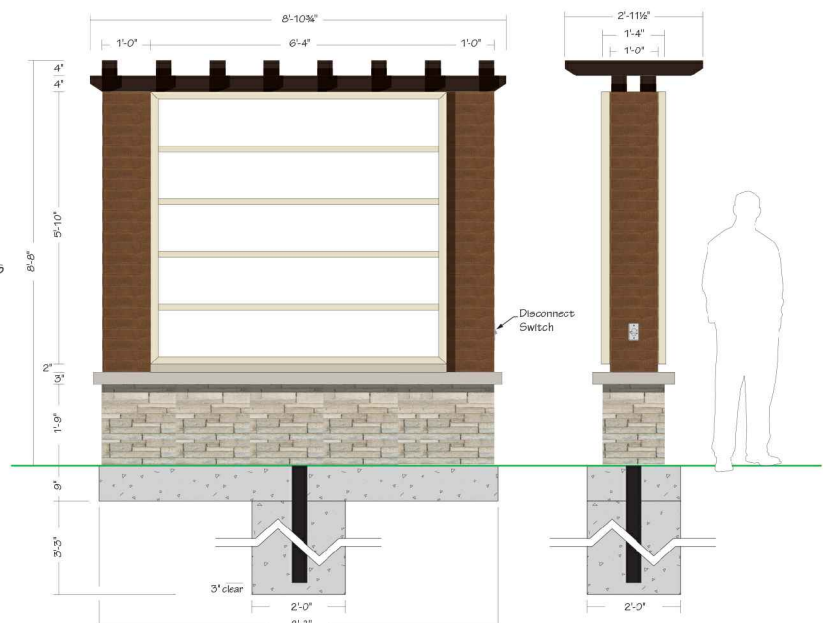
SCALE: 1/8"=1'-0"



SOUTH ELEVATION

SCALE: 1/8"=1'-0"

(1) 8'-0" x 6'-4" x 1'-4" Double Face Illuminated Monument Sign
Cabinets: Fabricated Aluminum Painted BP Pearl (SW6119 Antique White) Satin Finish
Faces: White Polycarbonate
Graphics: Applied Vinyl T&D
Illumination: Fluorescent Lamps and Electronic Ballasts
Power: (1) 20Amp @ 120Volts Electrical Circuits / Per Sign - Run to Sites by Others
Kneak: Aluminum Painted BP Pearl (SW6119 Antique White) Satin Finish
Pergola Topper: Fabricated Fauxwood Beams - Handhem - Java Color
Side Columns: Cherokee Brick Velour Dark Grey Brick over CMU Block Wall - by Others
Base: Brushed Stone - Fond-du-Lac Country Squire Masonry with Limestone Cap - by Others
Mounting: 4" x 4" Steel Tube set into 2'-0" dia. x 4'-0" deep Concrete Foundations
19" x 8'-0" L x 2'-0" W Concrete Pad Foundation for Masonry

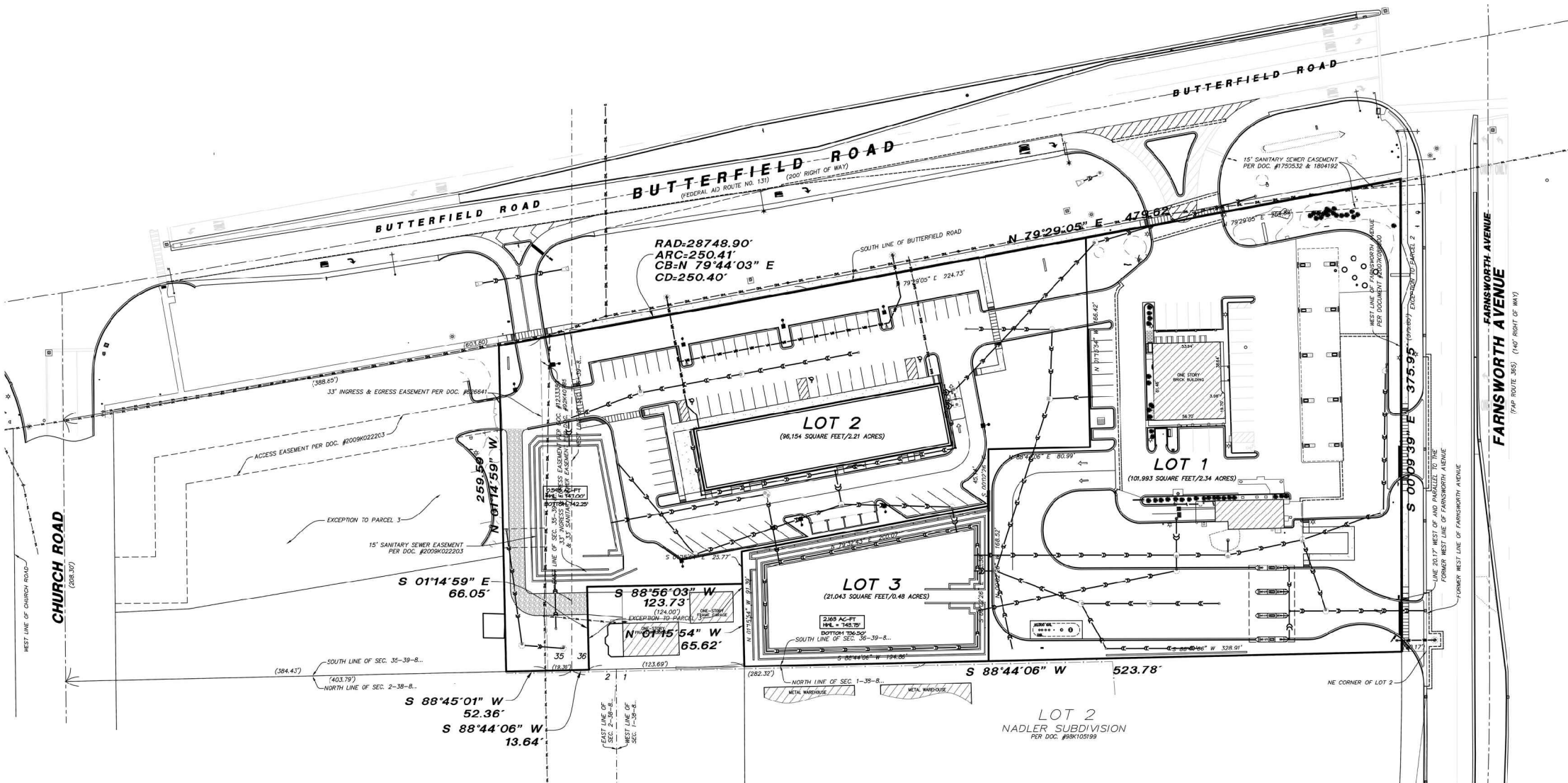


GROUND SIGN ELEVATION LOT 2

SCALE: 1/4"=1'-0"

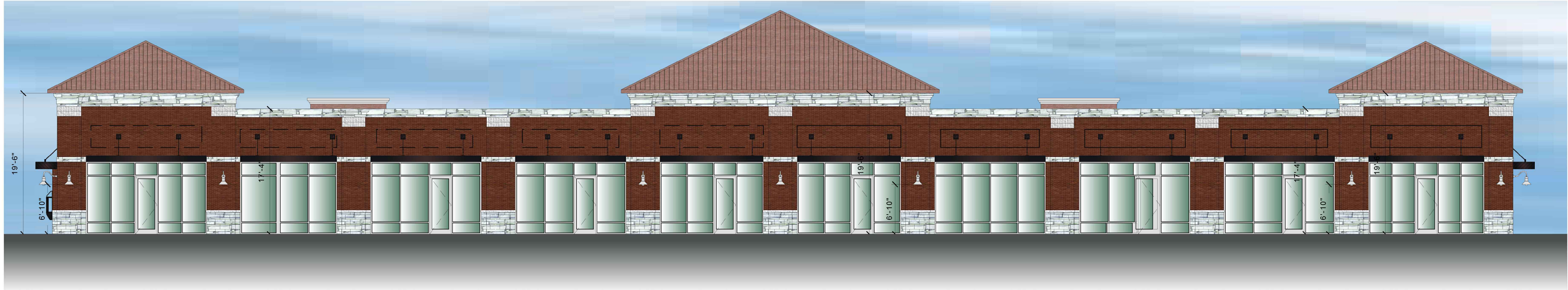
Elevation Data Table: Elevations		
Description	Value	Unit
a) Building Height in feet (typical)	19.50	feet
b) Total Building Square Footage (typical)	10,000.00	Square Feet
c) First Floor Building Square Footage (typical)	10,000.00	Square Feet
d) Number of building stories (typical)	1.00	Square Feet
e) Exterior Material List (including colors) for all buildings and accessory structures:		
UTILITY - BRICK CHEROKEE VELOUR MEDIUM GRAY		
STONE - BUECHEL FOND DU LAC COUNTRY SQUIRE		
METAL - PAC CLAD CHAMPAGNE		

Ground Sign #	Description	Value	Unit
Lot 2	i) Length of street frontage - on which Sign is Located	479.62	Feet
	ii) Width of Sign Face	6.33	Feet
	iii) Height of Sign Face	5.83	Feet
	iv) Square Footage of Sign Face	37	Square Feet
	v) Height of Sign (overall)	8.667	Feet
	vi) Width of Sign (overall)	8.667	Feet
	vii) Type of Sign	illuminated masonry tenant monument	
	viii) Type of Sign Base	stone base	
	ix) Is there a Digital Display	no	
	If Yes then, Location of Digital Display on the sign		
	Height of Digital Display		Feet
	Width of Digital Display		Feet
	Square Footage of Digital Display	-	Square Feet
	Percent of Digital Display Sign Coverage		Percent



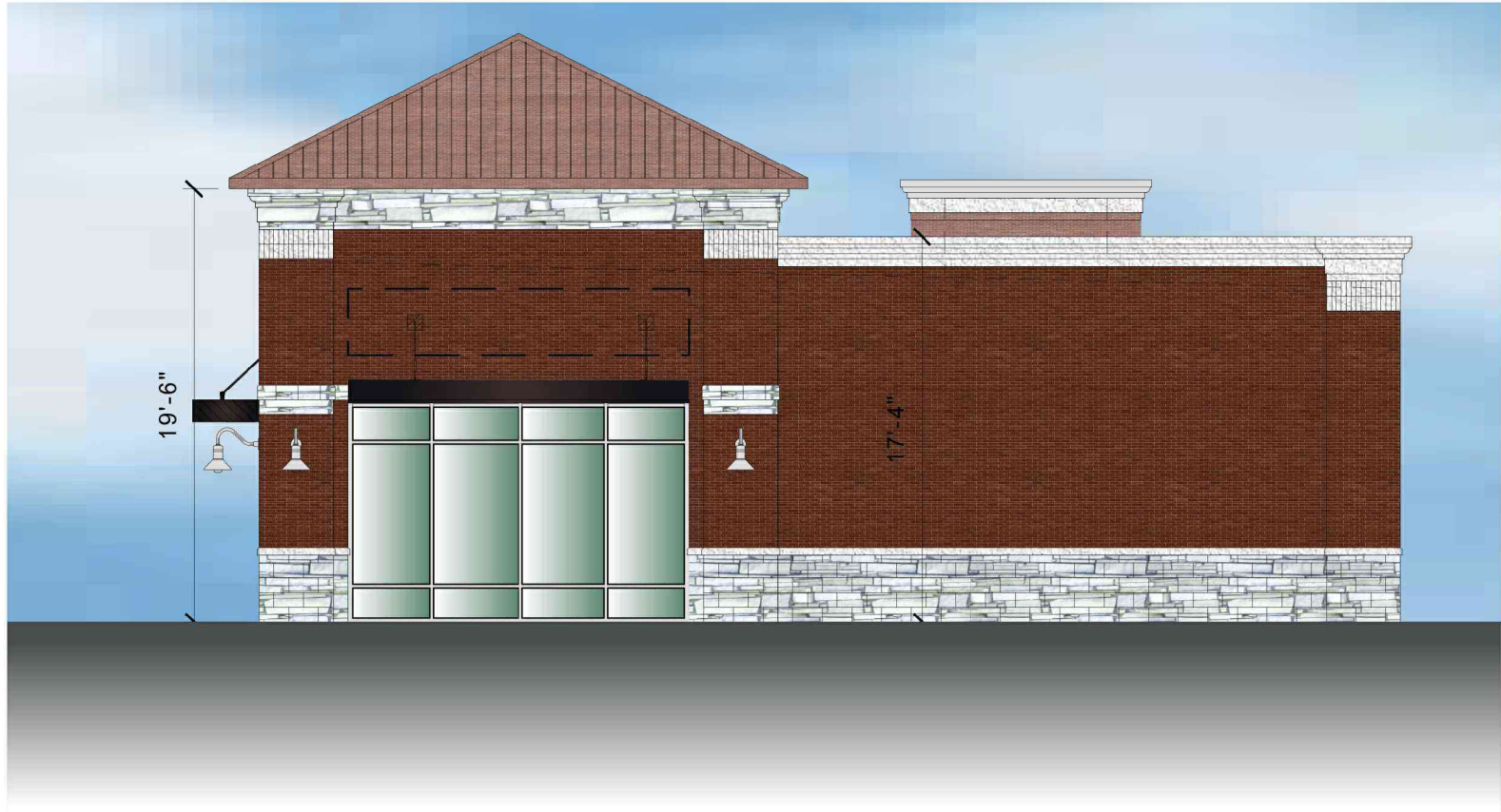
ELEVATIONS FOR LOT 2 IN PAS PLAZA SUBDIVISION

SCALE: 1/8"=1'-0"



NORTH ELEVATION

SCALE: 1/8" = 1'-0"



WEST ELEVATION

SCALE: 1/8" = 1'-0"



EAST ELEVATION

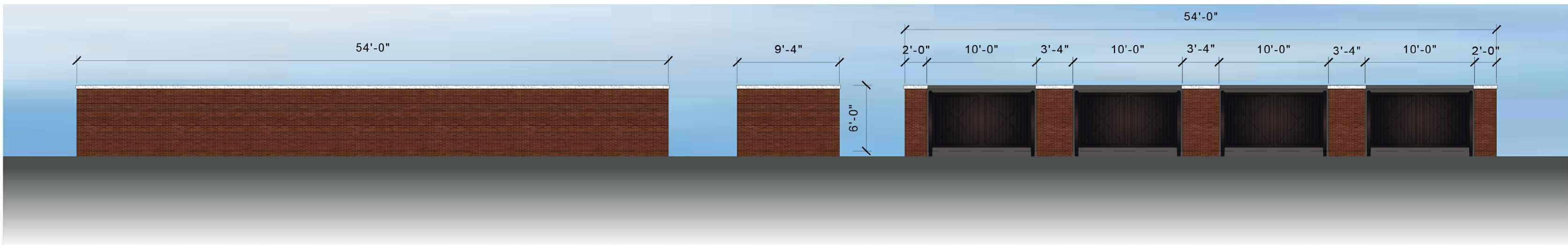
SCALE: 1/8" = 1'-0"

Elevation Data Table: Elevations		
Description	Value	Unit
a) Building Height in feet (typical)	19.50	feet
b) Total Building Square Footage (typical)	10,000.00	Square Feet
c) First Floor Building Square Footage (typical)	10,000.00	Square Feet
d) Number of building stories (typical)	1.00	Square Feet
e) Exterior Material List (including colors) for all buildings and accessory strutures:		
UTILITY - BRICK CHEROKEE VELOUR MEDIUM GRAY		
STONE - BUECHEL FOND DU LAC COUNTRY SQUIRE		
METAL - PAC CLAD CHAMPAGNE		



SOUTH ELEVATION

SCALE: 1/8" = 1'-0"



DUMPSTER ELEVATION

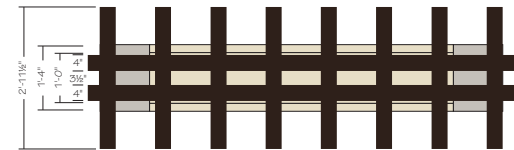
SCALE: 1/8" = 1'-0"

DATE	DESCRIPTION
07.28.21	EXHIBIT 1
12.27.22	DATA TABLE

GROUND SIGN ELEVATIONS

SCALE: 1/4"=1'-0"

SIGN 1 BUTTERFIELD ROAD



(1) 5'-10" x 6'-4" x 1'-4" Double Face Illuminated Monument Sign

Cabinet: Fabricated Aluminum Painted BP Pearl (SW6119 Antique White) Satin Finish

Faces: White Polycarbonate

Graphics: Applied Vinyl - T.B.D.

Illumination: White LEDs w/ 12V GOW 120/277V Power Supplies

Power: (1) 20Amp @ 120Volts Electrical Circuit / Per Sign - Run to Sites by Others

Reveal: Aluminum Painted BP Pearl (SW6119 Antique White) Satin Finish

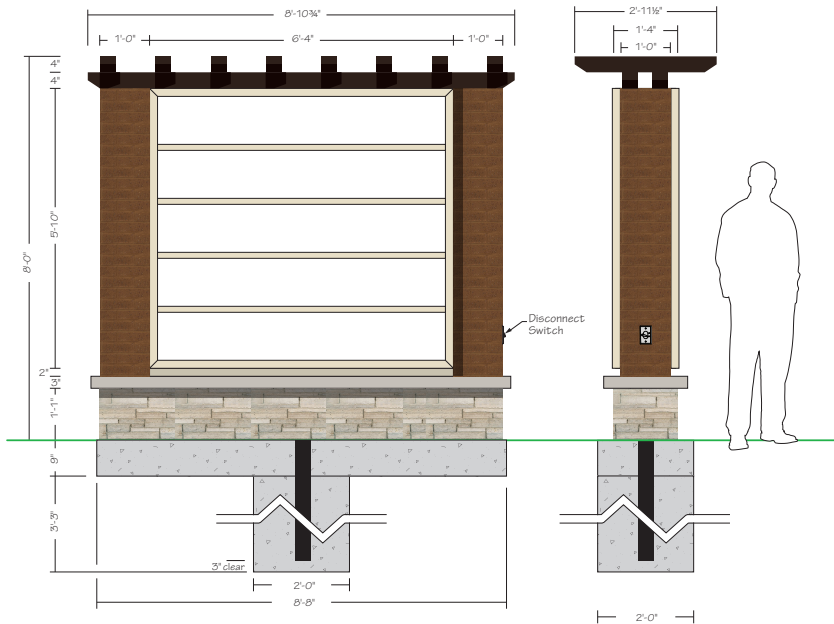
Pergola Topper: Fabricated Fauxwood Beams - Handhewn - Java Color

Side Columns: Cherokee Brick Velour Dark Grey Brick over CMU Block Wall - by Others

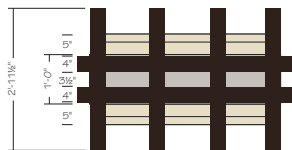
Base: Buechel Stone - Fond-du-Lac Country Squire Masonry with Limestone Cap - by Others

Mounting: 4" x 4" Steel Tube set into 2'-0" dia. x 4'-0" deep Concrete Foundations

9" H x 8'-8" L x 2'-0" W Concrete Pad Foundation for Masonry



FARNSWORTH AVENUE



(1) 6'-0" x 4'-0" x 1'-4" Double Face Illuminated Monument Signs - 24 SF

Cabinets: (4) 5' Deep Fabricated Aluminum Painted BP Pearl (SW6119 Antique White) Satin Finish

- SignComp Hinged Face Retainers

Faces: White Polycarbonate

Diesel Pricer Panel Area: 3630-97 Bristol Blue Translucent Vinyl

Diesel Pricer Unit: WatchFire 12" LED Digits - White

"High Flow..." Faces: White Polycarbonate - Digitally Printed Graphics

DEF Faces: White Polycarbonate - Digitally Printed Graphics

Illumination: White LEDs w/ 12V GOW 120/277V Power Supplies

Power: (1) 20Amp @ 120Volts Electrical Circuit - Run to Sites by Others

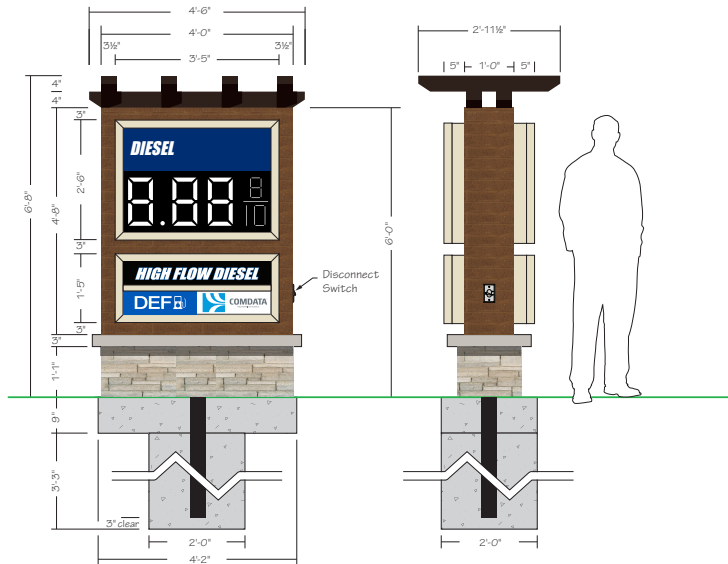
Pergola Topper: Fabricated Fauxwood Beams - Handhewn - Java Color

Side Columns: Cherokee Brick Velour Dark Grey Brick over CMU Block Wall - by Others

Base: Buechel Stone - Fond-du-Lac Country Squire Masonry with Limestone Cap - by Others

Mounting: (1) 4" x 4" Steel Tube set into 2'-0" dia. x 4'-0" deep Concrete Foundation

9" H x 4'-2" L x 2'-0" W Concrete Pad Foundation for Masonry



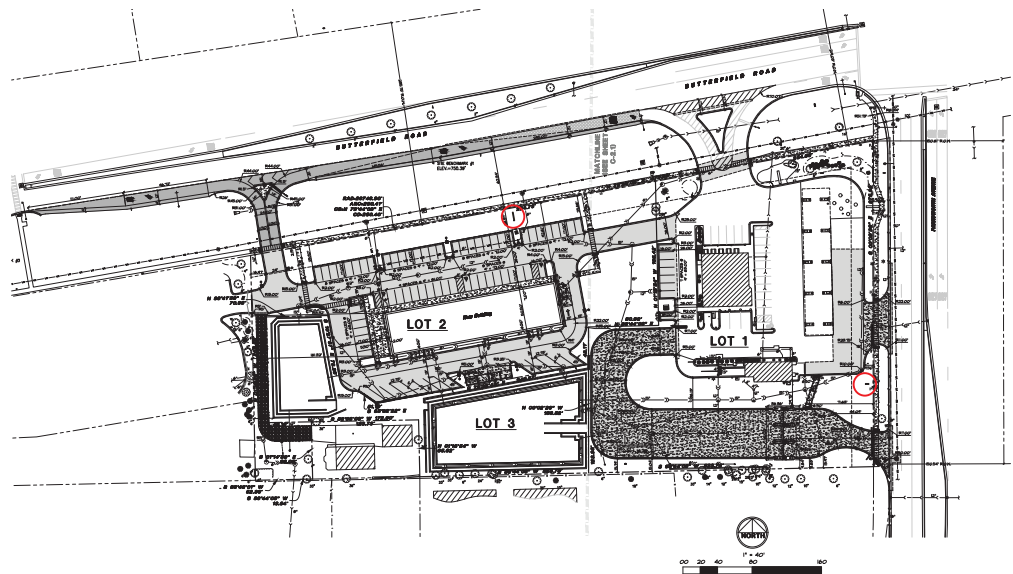
GROUND SIGN ELEVATION LOT 2

SCALE: 1/4"=1'-0"

Signage Data Table: Ground Signage			
Ground Sign #	Description	Value	Unit
1	i) Length of street frontage - on which Sign is Located	379.95	Feet
	ii) Width of Sign Face	3.50 / 3.50	Feet
	iii) Height of Sign Face	2.50 / 1.33	Feet
	vi) Square Footage of Sign Face	24	Square Feet
	v) Height of Sign (overall)	6.667	Feet
	vi) Width of Sign (overall)	4.50	Feet
	vii) Type of Sign	Illuminated masonry tenant monument	
	viii) Type of Sign Base	Stone	
	ix) Is there a Digital Display	YES	PRICER UNIT
	If Yes then, Location of Digital Display on the sign	UPPER CABINET	
	Height of Digital Display	1.25	Feet
2	Width of Digital Display	3.08	Feet
	Square Footage of Digital Display	4	Square Feet
	Percent of Digital Display Sign Coverage	6	Percent
	i) Length of street frontage - on which Sign is Located	479.62	Feet
	ii) Width of Sign Face	6.333	Feet
	iii) Height of Sign Face	5.833	Feet
	vi) Square Footage of Sign Face	37	Square Feet
	v) Height of Sign (overall)	8.0	Feet
	vi) Width of Sign (overall)	8.667	Feet
	vii) Type of Sign	Illuminated masonry tenant monument	
	viii) Type of Sign Base	Stone	
	ix) Is there a Digital Display	NO	
	If Yes then, Location of Digital Display on the sign		
	Height of Digital Display		Feet
	Width of Digital Display		Feet
	Square Footage of Digital Display		Square Feet
	Percent of Digital Display Sign Coverage		Percent

GROUND SIGN ELEVATION LOT 1

SCALE: 1/4"=1'-0"



Parvin-Clauss SIGN COMPANY

Design ■ Fabrication ■ Installation ■ Maintenance

165TubewayDrive ■ CarolStream ■ Illinois60188

Tel/630-510-2020 ■ Fax/630-510-2074

e-mail/signs@parvinclauss.com

www.parvinclauss.com

PROJECT:



Farnsworth & Butterfield
Aurora, IL

CUSTOMER APPROVAL:

DATE

AUTHORIZED SIGNATURE

REPRESENTATIVE

Brian Newton

DRAWN BY

Bill Marlow

DATE

6.24.15

SCALE

as noted

SHEET NO.

1 of 1

ESTIMATE / JOB NUMBER

5722

FILE NAME

prd5722

REVISIONS:

1 6.30.15 - Match Signs @ BP Station

2 9.04.20 - Qty.

3 6.28.21 - page layout for meeting

4 6.29.21 - sign images larger

5 10.21.22 - sign qty. / size

6 11.15.22 - sign qty. / size

7 12.02.22 - pricer units / colors

8 12.07.22 - diesel font

9 12.27.22 - data table

10 1.12.23 - oah sign 2

This sign is intended to be installed in accordance with the requirements of Article 600 of the National Electrical Code and/or other applicable local codes. This includes proper grounding and bonding of the sign.



This sign is built to UL Standards for operation in North America.

"This Document is owned by, and the information contained in it is proprietary to, Parvin-Clauss Sign Company. By receipt hereof the holder agrees not to use the information, disclose it to any third party, nor reproduce this document without the prior written consent of Parvin-Clauss Sign Company. Holder also agrees to immediately return this document upon request of Parvin-Clauss Sign Company."

© Copyright 2015 by Parvin-Clauss Sign Co.

LOT 1 DIESEL CANOPY SIGNAGE



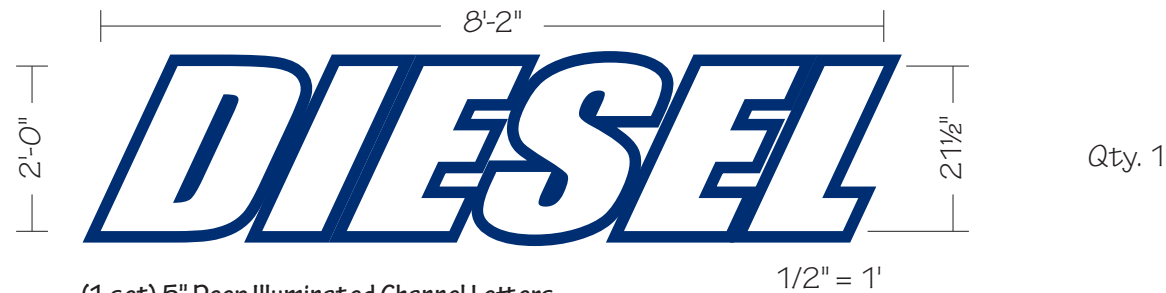
(1 set) 5" Deep Illuminated Channel Letters
Returns: Fabricated Aluminum Pre-Finished Black
Faces: White Acrylic w/ 1" Black Trimcap
Outline: 3M 7725-37 Sapphire Blue Vinyl Applied to ACM Panels
Illumination: White LEDs w/ Remote 60 Watt Power Supplies
Power: (1) 20Amp @ 120Volts Electrical Circuit Run to Site by Others
Mounting: Flush to Canopy w/ Tek Screws

NOTE: CANOPY FACED WITH BLACK ACM PANELS



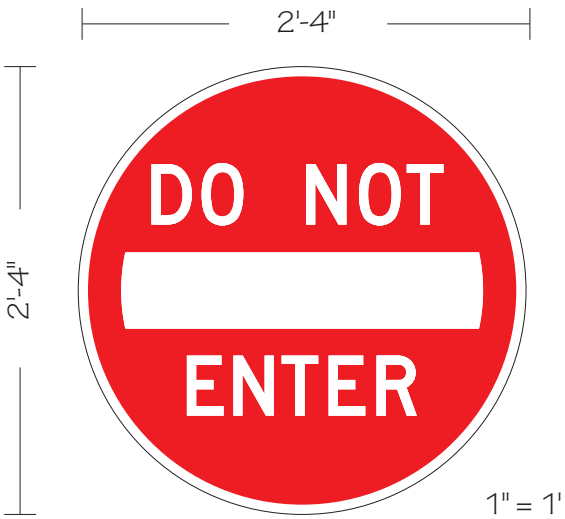
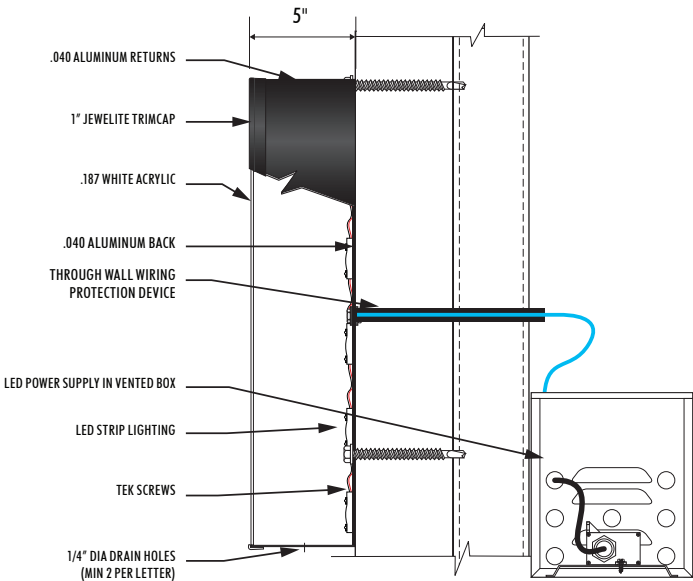
(1 set) 5" Deep Illuminated Channel Letters
Returns: Fabricated Aluminum Pre-Finished Black
Faces: White Acrylic w/ 1" Black Trimcap
Outline: 3M 7725-37 Sapphire Blue Vinyl Applied to ACM Panels
Illumination: White LEDs w/ Remote 60 Watt Power Supplies
Power: (1) 20Amp @ 120Volts Electrical Circuit Run to Site by Others
Mounting: Flush to Canopy w/ Tek Screws

NOTE: CANOPY FACED WITH BLACK ACM PANELS



(1 set) 5" Deep Illuminated Channel Letters
Returns: Fabricated Aluminum Pre-Finished Black
Faces: White Acrylic w/ 1" Black Trimcap
Outline: 3M 7725-37 Sapphire Blue Vinyl Applied to ACM Panels
Illumination: White LEDs w/ Remote 60 Watt Power Supplies
Power: (1) 20Amp @ 120Volts Electrical Circuit Run to Site by Others
Mounting: Flush to Canopy w/ Tek Screws

NOTE: CANOPY FACED WITH BLACK ACM PANELS



(4) 2'-4" x 2'-4" Std. DO NOT ENTER Sign Panels
Panels: .080" Aluminum
Faces: Reflective White w/ Digitally printed Red background
- Copy reversed out to Reflective White
Mounting: Flush to Brick Columns w/ Masonry Anchors

Parvin-Clauss
SIGN COMPANY

Design ■ Fabrication ■ Installation ■ Maintenance
165TubewayDrive ■ CarolStream ■ Illinois60188
Tel/630-510-2020 ■ Fax/630-510-2074
e-mail/signs@parvinclauss.com
www.parvinclauss.com

PROJECT:



1395 Butterfield Road
Aurora, IL 60502

CUSTOMER APPROVAL:

DATE	
AUTHORIZED SIGNATURE	
REPRESENTATIVE	House / KZ
DRAWN BY	Bill Marlow
DATE	7.19.21
SCALE	3/8" = 1'
SHEET NO.	1 of 3
ESTIMATE / JOB NUMBER	7727
FILE NAME	PRD7727

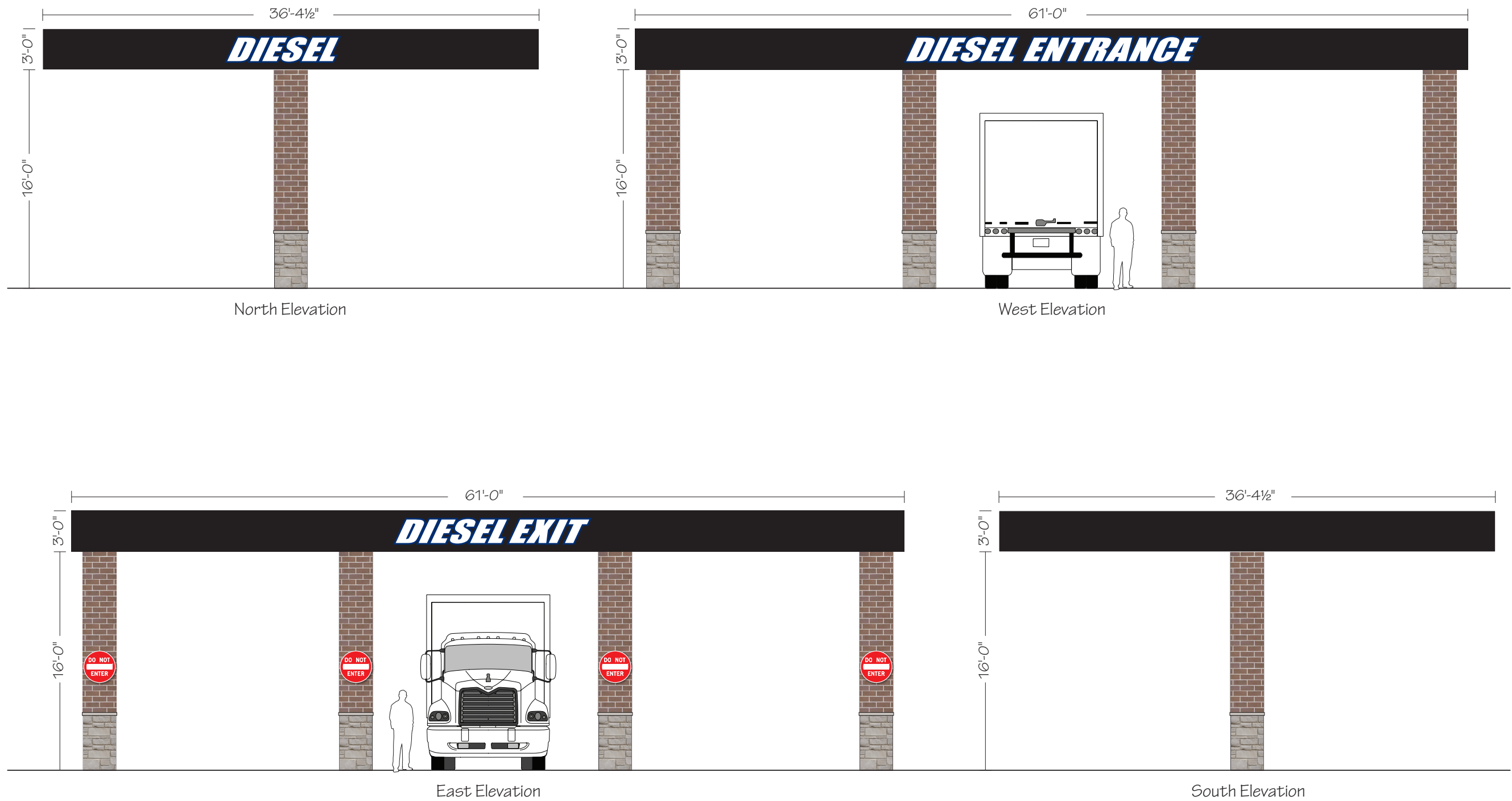
REVISIONS:

1	7.27.21 - add "exit" letters & qty. 4 do not enter
2	2.21.23 - add title
3	
4	
5	
6	
7	
8	

This sign is intended to be installed in accordance with the requirements of Article 600 of the National Electrical Code and/or other applicable local codes. This includes proper grounding and bonding of the sign.



LOT 1 DIESEL CANOPY SIGNAGE



Parvin-Clauss
SIGN COMPANY

Design ■ Fabrication ■ Installation ■ Maintenance
165TubewayDrive■CarolStream■Illinois60188
Tel/630-510-2020 ■ Fax/630-510-2074
e-mail/signs@parvinclauss.com
www.parvinclauss.com

PROJECT:



1395 Butterfield Road
Aurora, IL 60502

CUSTOMER APPROVAL:

DATE

AUTHORIZED SIGNATURE

REPRESENTATIVE

House / KZ

DRAWN BY

Bill Marlow

DATE

7.19.21

SCALE

1/8" = 1'

SHEET NO.

2 of 3

ESTIMATE / JOB NUMBER

7727

FILE NAME

PRD7727

REVISIONS:

17.27.21 - add "exit" letters &
qty. 4 do not enter

2 2.21.23 - add title

3

4

5

6

7

8

This sign is intended to be installed
in accordance with the
requirements of Article 600 of the
National Electrical Code and/or
other applicable local codes. This
includes proper grounding and
bonding of the sign.



This sign is built to UL Standards
for operation in North America.

"This Document is owned by, and the information contained in it is proprietary to, Parvin-Clauss Sign Company. By receipt hereof the holder agrees not to use the information, disclose it to any third party,
nor reproduce this document without the prior written consent of Parvin-Clauss Sign Company. Holder also agrees to immediately return this document upon request of Parvin-Clauss Sign Company."

© Copyright 2021 by Parvin-Clauss Sign Co.

LOT 1 DIESEL CANOPY SIGNAGE

Design ■ Fabrication ■ Installation ■ Maintenance
165TubewayDrive■CarolStream■Illinois60188
Tel/630-510-2020 ■ Fax/630-510-2074
e-mail/signs@parvinclauss.com
www.parvinclauss.com

PROJECT:



1395 Butterfield Road
Aurora, IL 60502

CUSTOMER APPROVAL:

DATE

AUTHORIZED SIGNATURE

REPRESENTATIVE

House / KZ

DRAWN BY

Bill Marlow

DATE

7.19.21

SCALE

nts

SHEET NO.

3 of 3

ESTIMATE / JOB NUMBER

7727

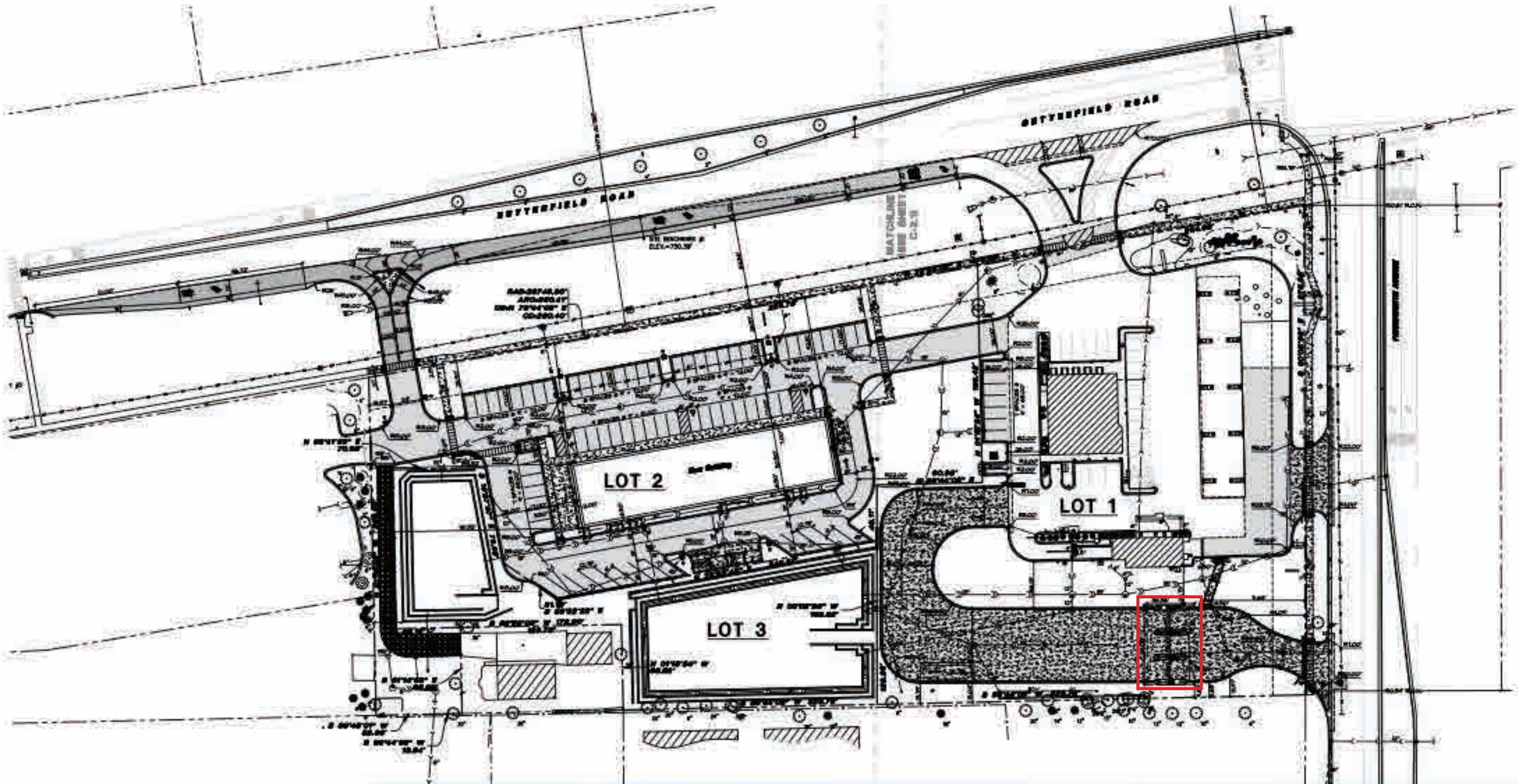
FILE NAME

PRD7727

REVISIONS:

- | | |
|---|-------------------------|
| 1 | 2.22.23 - add to packet |
| 2 | |
| 3 | |
| 4 | |
| 5 | |
| 6 | |
| 7 | |
| 8 | |

This sign is intended to be installed in accordance with the requirements of Article 600 of the National Electrical Code and/or other applicable local codes. This includes proper grounding and bonding of the sign.



This sign is built to UL Standards for operation in North America.

"This Document is owned by, and the information contained in it is proprietary to, Parvin-Clauss Sign Company. By receipt hereof the holder agrees not to use the information, disclose it to any third party, nor reproduce this document without the prior written consent of Parvin-Clauss Sign Company. Holder also agrees to immediately return this document upon request of Parvin-Clauss Sign Company."

© Copyright 2021 by Parvin-Clauss Sign Co.