

COMMUNITY ENGAGEMENT



GROW YOUR RESIDENT CONTACT DATABASE AND KEEP CITIZENS SAFE AND INFORMED

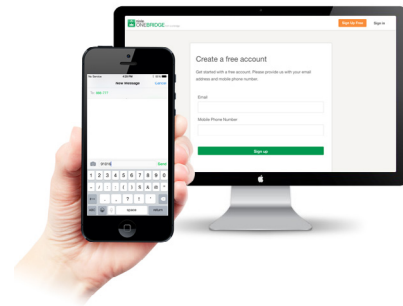
Engaged and active communities are built on a commitment to transparency and safety. With Everbridge's **Community Engagement** module you can easily grow a resident contact database and have complete control over authoring and publishing public safety messages directly to the public.

COMMUNICATION FORCE MULTIPLIER

One-click publishing offers direct power and control over information shared through various communication channels including social media, the **Onebridge** mobile app and more. This capability is especially ideal for communicating with the public when internal work related resources are limited.

EXPAND YOUR RESIDENT CONTACT DATABASE

- + Anonymous mobile opt-ins: Residents can text their zip code to 888777



- + Keyword opt-ins: Leverage and promote events based on keyword for sporting events, festivals, concerts and conventions

ONE-CLICK PUBLISHING



COMMUNITY ENGAGEMENT



PROVIDE RESIDENTS AND VISITORS IMPORTANT EVENT INFORMATION

Communicating important public event information can be a challenge, especially for large-scale groups of people. With **Community Engagement**, residents and visitors can easily sign up to receive real-time event notifications and alerts:



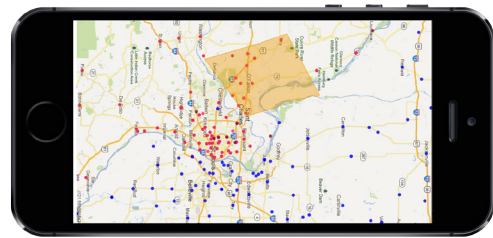
- + Attendees simply text a keyword, for example **jazzfestival**, to **888777**.
- + Registrants receive event information and notifications directly on their phones.
- + At the conclusion of the event, participants can be invited to sign up for more alerts.

COMPLETE FOCUS ON RESIDENT SAFETY AND AWARENESS

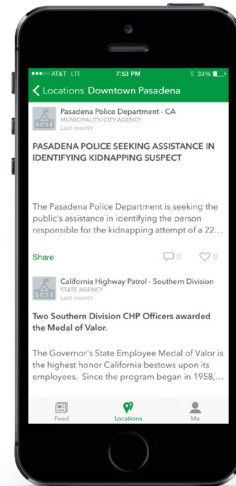
Over 9,000 public safety agencies throughout the United States use **Community Engagement** to keep residents safe and informed. It is the most trusted public safety product on the market, and completely focused on protecting community members.

SEGMENT YOUR MESSAGES FOR PRECISE NEIGHBORHOOD TARGETING

Traffic jam? Road work? With **Community Engagement**, you can send messages and alerts to specific communities or neighborhoods. Everbridge **Community Engagement** is the most precise neighborhood-level geographic targeting system available.



DIRECT RESIDENT COMMUNICATION CHANNEL FOR TWO-WAY DIALOGUE



Using Everbridge's exclusive **OneBridge** mobile app, public safety organizations can inform residents in specific neighborhoods of important local safety information. The app is free to download and it provides a convenient way for local safety organizations and emergency management to have two way dialogue with its residents. The app encourages neighbors to share content, enabling the community to work together to raise safety concerns, help find lost pets and organize other neighborhood activities.

About Everbridge

Everbridge is a leading unified critical communications platform trusted by corporations and communities of all sizes that need to reach the right people for immediate action, collaboration, and decision-making. Connecting millions of people and internet-connected devices, the company provides reassurance that secure, compliant messages are delivered, locally and globally, received and responded to, no matter the recipient's location. Everbridge is based in Boston, Los Angeles, San Francisco, Beijing and London.

For a full product description, along with best practices and product details please see the Everbridge User Guide and Everbridge University.



DS_Community_Engagement_9.15.2

VISIT WWW.EVERBRIDGE.COM
CALL +1-818-230-9700