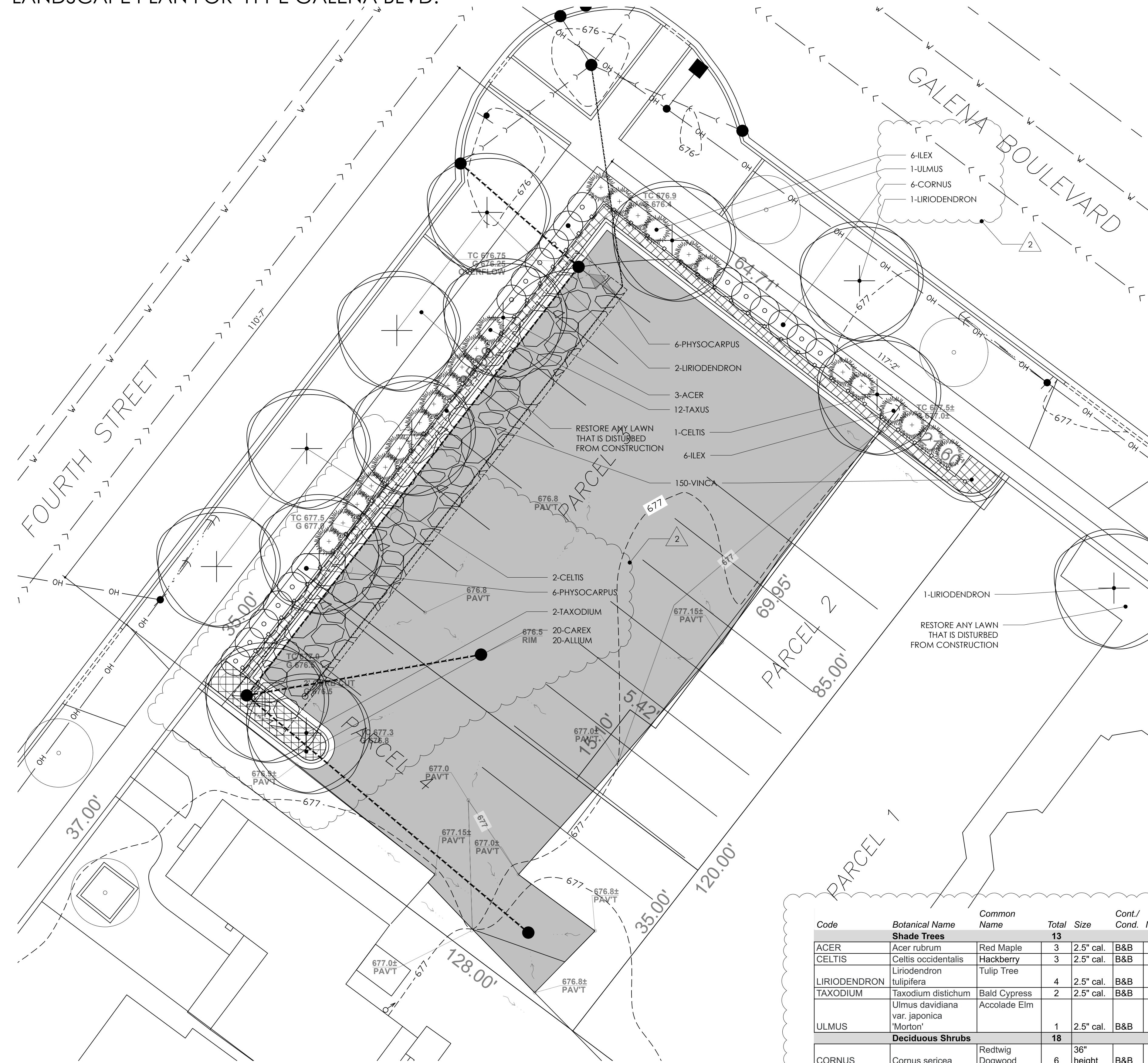


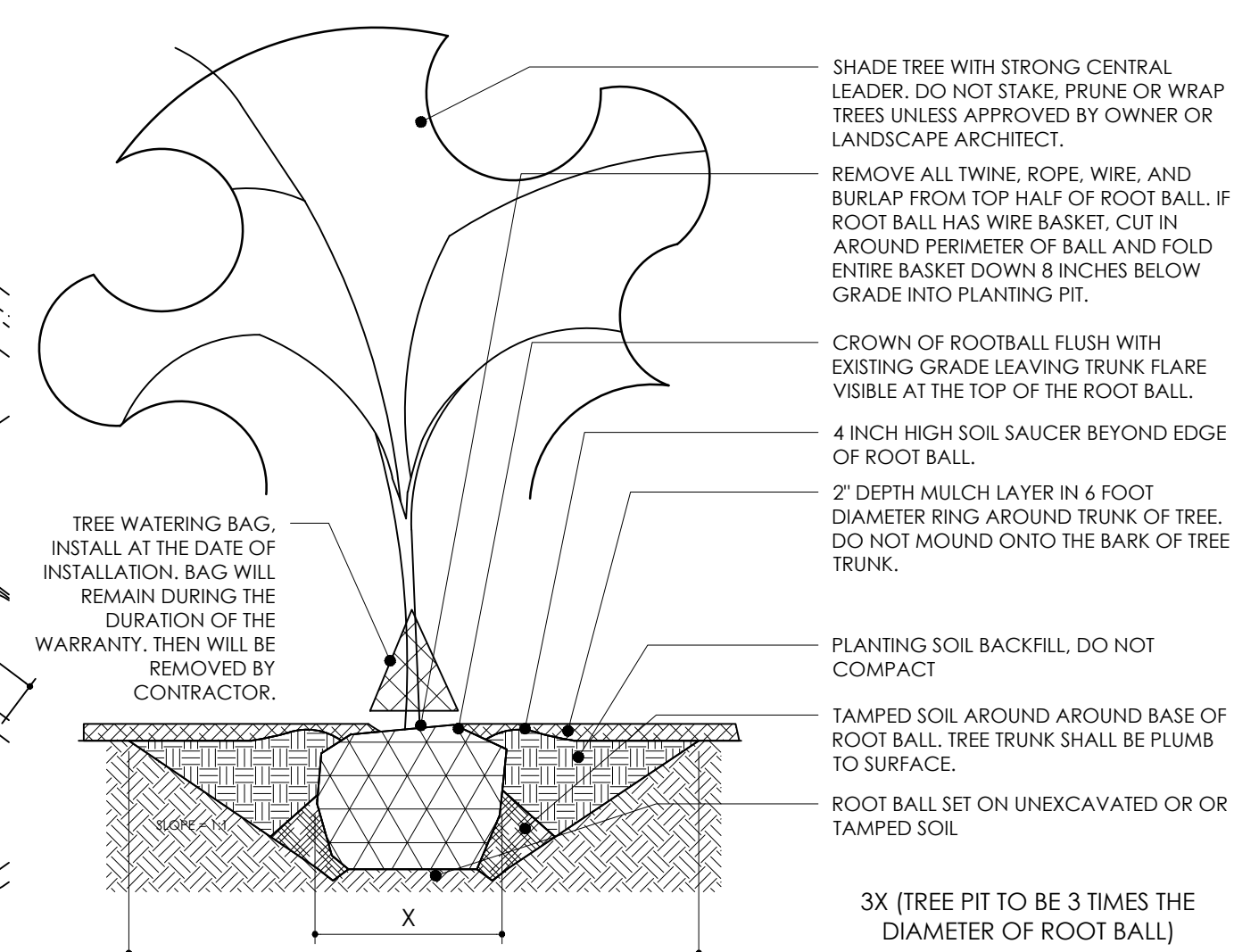
LANDSCAPE PLAN



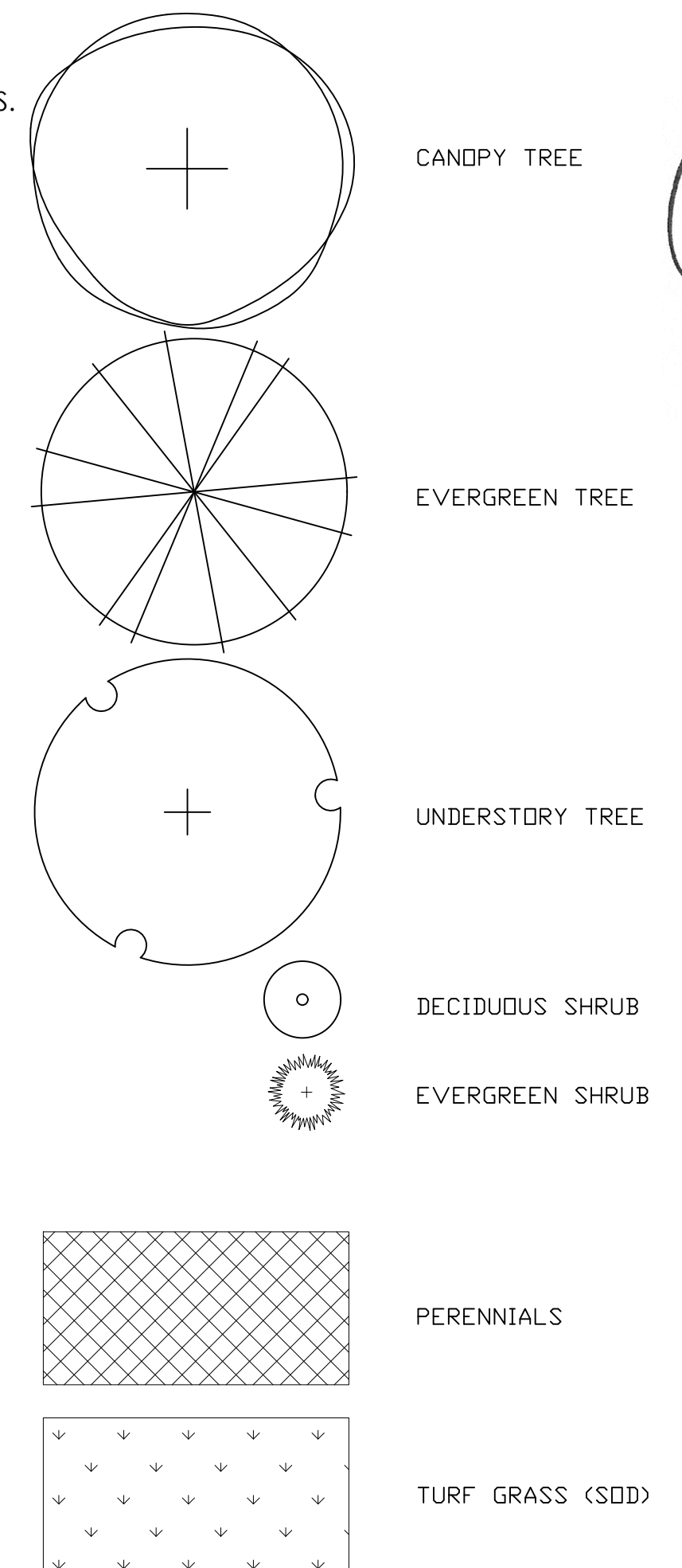
The diagram shows a cross-section of a hole being dug into the ground. A root ball is placed at the bottom of the hole. The surrounding soil is shown being tamped down around the base of the root ball. A layer of mulch is applied on top of the soil surface around the hole. A 3-inch high soil rim is shown beyond the edge of the root ball.

- 3 INCH HIGH SOIL RIM BEYOND EDGE OF ROOT BALL FOR WATER DETENTION
- REMOVE ALL TWINE, ROPE, AND WIRE & BURLAP FROM TOP 2/3 OF ROOT BALL
- PLACE ROOT BALL ON UNEXCAVATED OR TAMPED SOIL
- TAMP SOIL AROUND ROOT BALL BASE FIRMLY WITH FOOT PRESSURE TO REDUCE SHIFTING OF ROOT BALL. TAMPED SOIL SHOULD NOT BE TOO COMPRESSED TO DETER ROOT GROWTH AROUND ROOT BALL.
- REMOVE ALL AIRPOCKETS OR POTENTIAL AIR POCKETS THAT WILL OCCUR DURING THE SETTLING OF THE SOIL.
- HOLE TO BE TWICE THE SIZE OF ROOTBALL
- SET ROOT BALL 2-3 INCHES HIGHER THAN SURROUNDING GRADE TO ALLOW SETTling OF THE SOIL.
- 2-3 INCHES OF MULCH ON SURFACE; DO NOT APPLY ADJACENT OR DIRECTLY ON PLANT BASE

0 4' 8



0 4' 8



PROJECT MANAGER: G. LEHMAN/ILA	PERMIT REVIEW PLANS	07-20-25
LANDSCAPE ARCHT.: G. LEHMAN/ILA	PERMIT REVIEW PLANS	08-01-26
DRAFTSMAN:		

LANDSCAPE ARCHITECTURE
5834 N TALMAN AVE
CHICAGO, ILLINOIS 60659
773-732-0311
GLEHMAN@GGSTUDIODESIGN.NET

LANDSCAPE PLAN FOR 411 E GALENA BLVD.

411 E GALENA BOULEVARD
AURORA, ILLINOIS

COPYRIGHT:
 THIS DRAWING SHALL NOT BE USED,
 REPRODUCED, MODIFIED OR SOLD EITHER
 WHOLLY OR IN PART, EXCEPT WHEN
 AUTHORIZED IN WRITING BY THE LANDSCAPE
 ARCHITECT.

PROJECT NO.:	25040
--------------	-------

SUE DATE: AUG. 1, 2025

SCALE:

SHEET NUMBER

1

Code	Botanical Name	Common Name	Total	Size	Cont./ Cond.	Notes
Shade Trees			13			
ACER	Acer rubrum	Red Maple	3	2.5" cal.	B&B	
CELTIS	Celtis occidentalis	Hackberry	3	2.5" cal.		
LIRIODENDRON	Liriodendron tulipifera	Tulip Tree	4	2.5" cal.	B&B	
TAXODIUM	Taxodium distichum	Bald Cypress	2	2.5" cal.	B&B	
ULMUS	Ulmus davidiana var. japonica 'Morton'	Accolade Elm	1	2.5" cal.	B&B	
Deciduous Shrubs			18			
CORNUS	Cornus sericea	Redtwig Dogwood	6	36" height	B&B	
PHYSOCARPUS	Physocarpus opulifolius	Common Ninebark	12	36" height	B&B	
Evergreen Shrubs			24			
TAXUS	Taxus x media densiformis	Dense Yew	12	36" height	B&B	
ILEX	Ilex x meserveae	Meserve Holly	12	36" height	B&B	
Groundcover & Perennial			190			
ALLIUM	Allium cernuum	Nodding Onion	20		1 gallon	
CAREX	Carex pensylvanica	Pennsylvania Sedge	20		1 gallon	
VINCA	Vinca minor	Periwinkle	150		flat	Install 12" on center

PLANT SCHEDULE