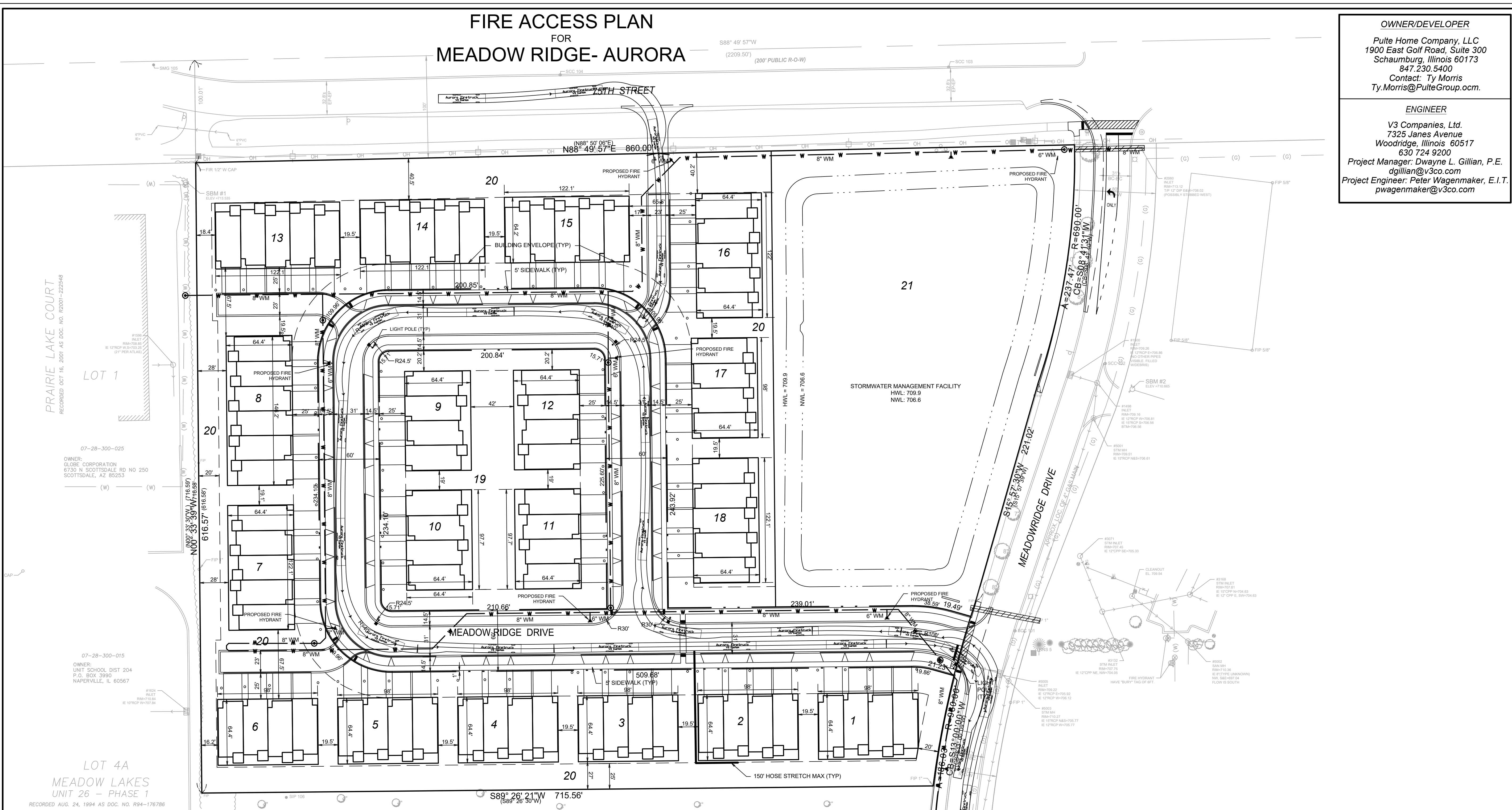


FIRE ACCESS PLAN FOR MEADOW RIDGE- AURORA

S88° 49' 57" W
(2209.50')
(200' PUBLIC R-O-W)

OWNER/DEVELOPER
Pulte Home Company, LLC
1900 East Golf Road, Suite 300
Schaumburg, Illinois 60173
847.230.5400
Contact: Ty Morris
Ty.Morris@PulteGroup.com

ENGINEER
V3 Companies, Ltd.
7325 Janes Avenue
Woodridge, Illinois 60517
630.724.9200
Project Manager: Dwayne L. Gillian, P.E.
dgillian@v3co.com
Project Engineer: Peter Wagenmaker, E.I.T.
pwagenmaker@v3co.com



PRAIRIE LAKE COURT
RECORDED OCT 16, 2001 AS DOC. NO. RZ001-222548

07-28-300-025
OWNER: CLDRE CORPORATION
6730 N SCOTTSDALE RD NO 250
SCOTTSDALE, AZ 85253

07-28-300-015
OWNER: UNIT SCHOOL DIST 204
P.O. BOX 3990
NAPERVILLE, IL 60567

LOT 4A
MEADOW LAKES
UNIT 26 - PHASE 1
RECORDED AUG. 24, 1994 AS DOC. NO. R94-176786

| REVISIONS | | DESCRIPTION |
|-----------|----------|----------------------|
| NO. | DATE | |
| 1 | 07-01-19 | COA FORMAL SUBMITTAL |

ILLINOIS
AURORA

FIRE ACCESS PLAN MEADOW RIDGE

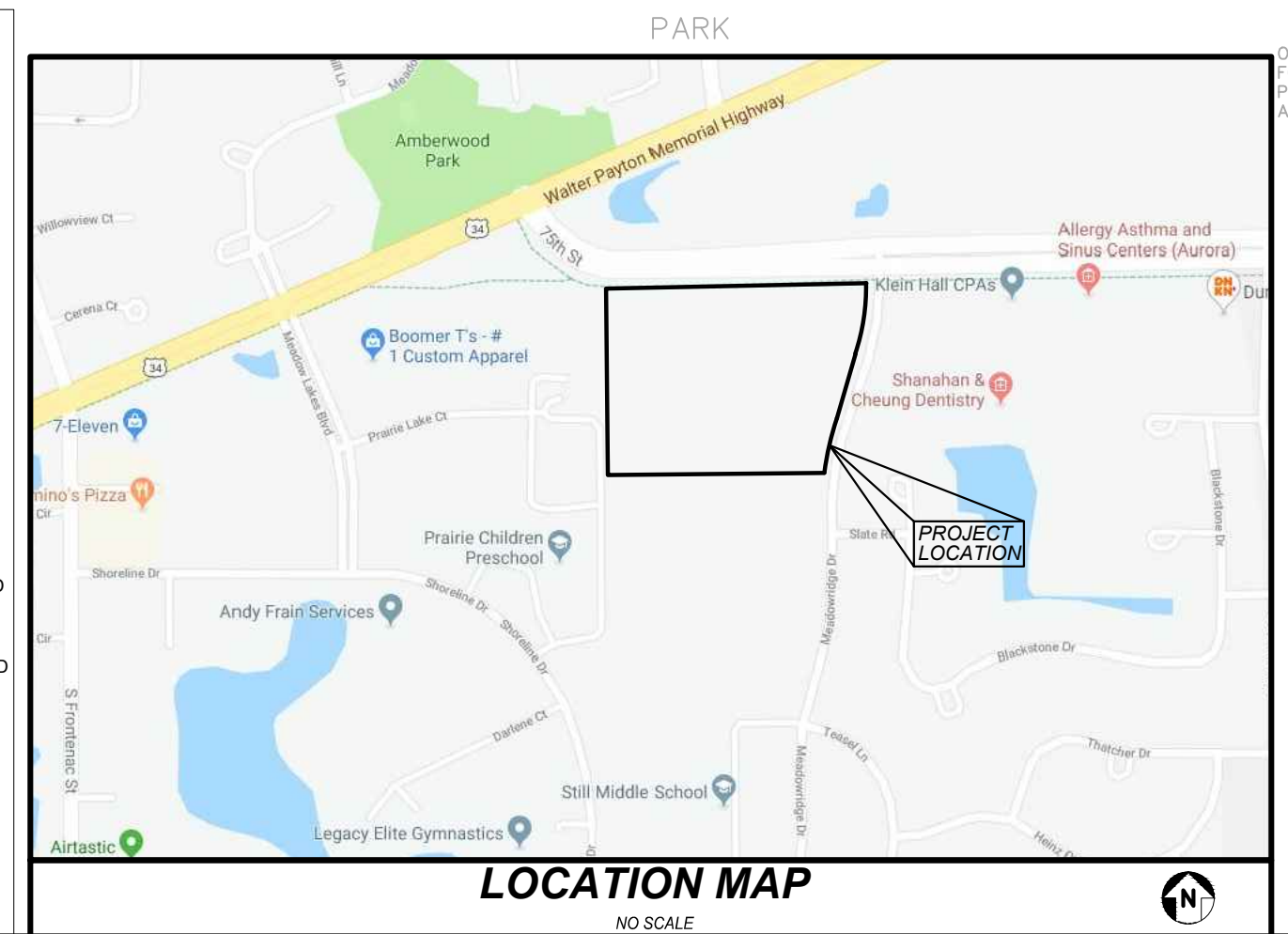
7325 Janes Avenue
Woodridge, IL 60517
630.724.9200 phone
www.v3co.com

V3

DRAWING NO.
1 OF 1

LEGEND

| EXISTING | PROPOSED | DESCRIPTION |
|----------|----------|-----------------------------------|
| | | SANITARY SEWER |
| | | SANITARY FORCE MAIN |
| | | STORM SEWER |
| | | COMBINED SEWER |
| | | WATER MAIN |
| | | UNDERGROUND FIBER OPTIC |
| | | UNDERGROUND ELECTRIC |
| | | UNDERGROUND TELEPHONE |
| | | OVERHEAD ELECTRIC |
| | | OVERHEAD TELEPHONE |
| | | OVERHEAD WIRE |
| | | UTILITY STRUCTURE WITH CLOSED LID |
| | | CURB INLET |
| | | DRAINAGE STRUCTURE WITH OPEN LID |
| | | FIRE HYDRANT |
| | | VALVE IN VALVE BOX |
| | | GATE VALVE IN VALVE VAULT |
| | | FLARED END SECTION (F.E.S.) |
| | | LIGHT STANDARD |
| | | OVERHEAD UTILITY POLE |



Fire Access Plan Data Table

| Description | Value | Unit |
|--------------------------------------------------------------------------------------------------------------------------------------------------------------------------------------------------------------------------------------------------------------------------------|----------------------------------------------|-------------|
| a) Building Height | 35.00 | feet |
| b) Building Square Footage (typical) | 6,205 | square feet |
| c) Building fire suppression information including any proposed use of sprinkler systems, fire alarm systems, whether fire extinguishers are needed: | SEE ARCHITECTURAL PLANS. | |
| d) General description of business to be conducted within each building including: will there be rack storage in the building, will there be storage of combustible materials over twelve feet in height, clearance of sprinkler heads and stored materials (18 inch minimum): | NO HAZARDOUS MATERIALS TO BE STORED ON SITE. | |

