

Property Research Sheet

Location ID#(s): 62343-62344

As of: 2/17/2021

Researched By: Steve Broadwell

Address: 1145 Sullivan Rd

Current Zoning: R-1(S) One Family Dwelling

Parcel Number(s): 15-08-201-012

Comp Plan Designation: Quasi-Public

Size: 19.26 Acres / 838,965.6 Sq. Ft.

School District: SD 129 - West Aurora School District

Park District: FVPD - Fox Valley Park District

Ward: 6

Current Land Use

Current Land Use: Religious Institution

Legislative History

The known legislative history for this Property is as follows:

O1985-5376 approved on 5/21/1985: AN ORDINANCE PROVIDING FOR THE EXECUTION OF AN ANNEXATION AGREEMENT WITH THE OWNERS OF RECORD OF TERRITORY WHICH MAY BE ANNEXED TO THE CITY OF AURORA AND WHICH IS LOCATED EAST OF RANDALL ROAD BETWEEN SULLIVAN ROAD AND THE ILLINOIS TOLLWAY.

O1985-5383 approved on 6/18/1985: AN ORDINANCE ANNEXING CERTAIN PROPERTY TO THE CITY OF AURORA PURSUANT TO AN APPROVED PRE-ANNEXATION AGREEMENT LOCATED AT THE NORTHEAST CORNER OF RANDALL AND SULLIVAN ROADS.

PCR1985-023 approved on 8/7/1985: A RESOLUTION APPROVING THE FINAL PLAN FOR THE SRI VENKATESWARA SWAMY TEMPLE COMPLEX.

PDFNL2002-039 approved on 7/11/2002: RESOLUTION APPROVING A REVISION TO THE FINAL PLAN FOR THE SVS SWAMI TEMPLE TO ALLOW FOR A 12,346 SQ FT BUILDING ADDITION FOR PROPERTY LOCATED AT 1145 WEST SULLIVAN ROAD.

R2008-296 approved on 6/24/2008: A RESOLUTION APPROVING THE FINAL PLAN FOR A LANDSCAPED BERM FOR THE BALAJI TEMPLE LOCATED 1145 W. SULLIVAN ROAD.

R2009-474 approved on 12/22/2009: A RESOLUTION ACCEPTING THE DEDICATION OF A CITY EASEMENT AND STORMWATER CONTROL EASEMENT FOR THE PROPERTY LOCATED AT 1145 W. SULLIVAN ROAD, AURORA, ILLINOIS.

PDFNL2011-002 approved on 4/14/2011: A RESOLUTION APPROVING A REVISION TO THE FINAL PLAN TO ADD A PARKING LOT AND SIDEWALKS AROUND THE TEMPLE ON PROPERTY LOCATED AT 1145 SULLIVAN ROAD, AURORA, IL.

Location Maps Attached:

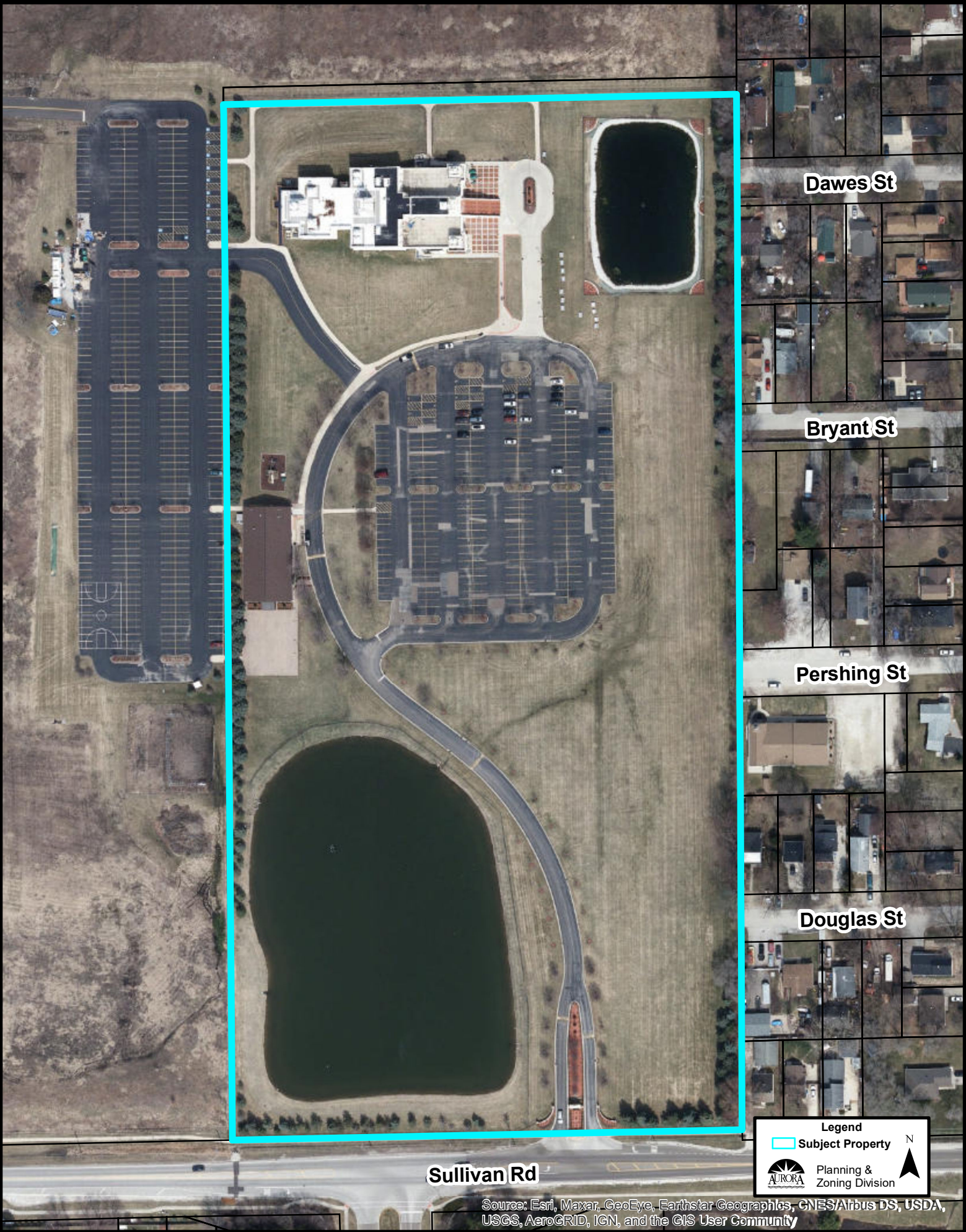
Aerial Overview

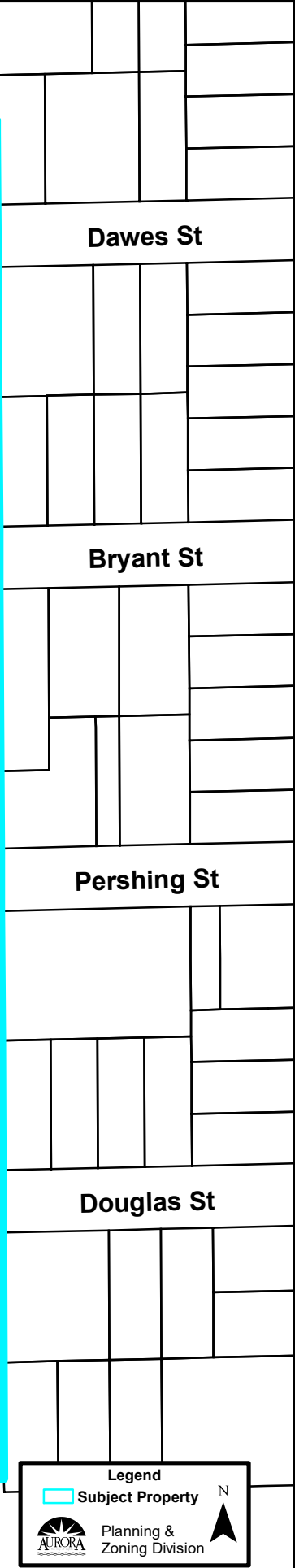
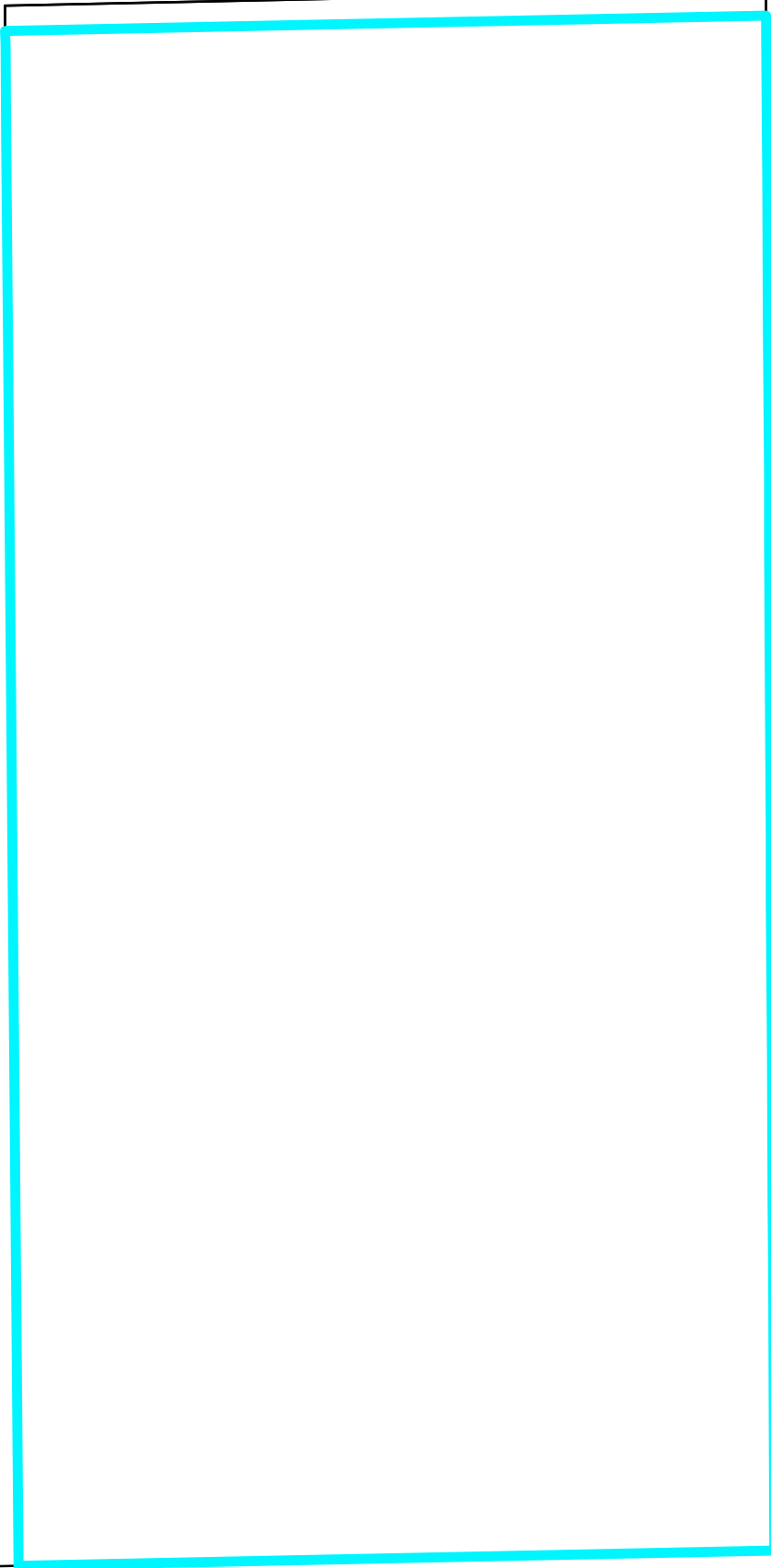
Location Map

Zoning Map

Comprehensive Plan Map

Aerial Photo (1:5,000):





Dawes St

Bryant St

Pershing St

Douglas St

Sullivan Rd

Legend

 Subject Property

 Planning & Zoning Division

N 

Zoning Map (1:5,000):

