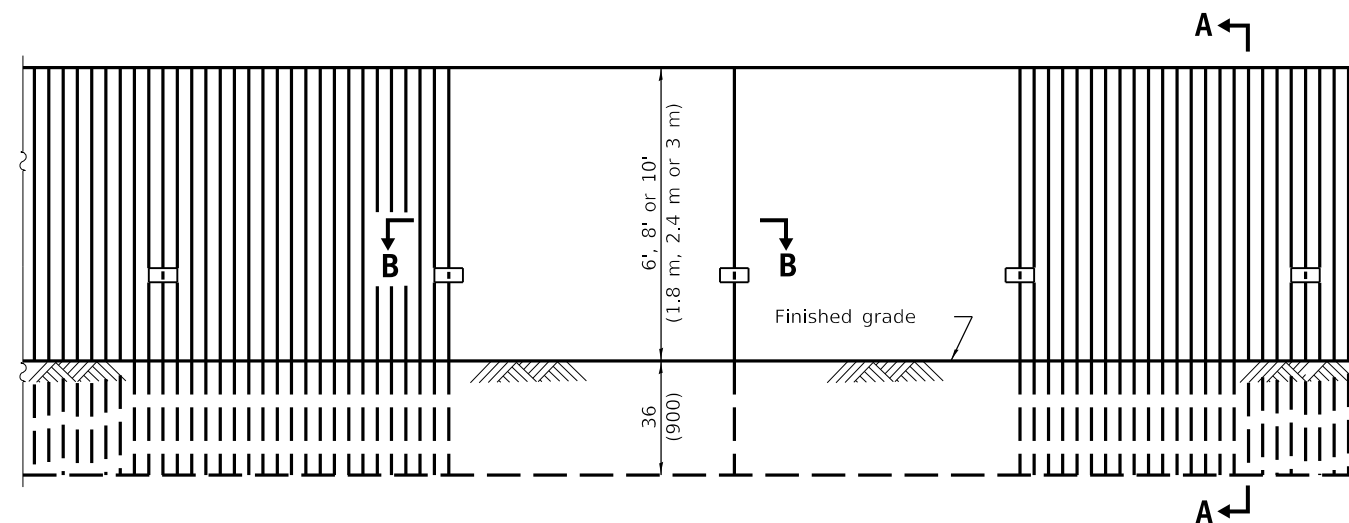
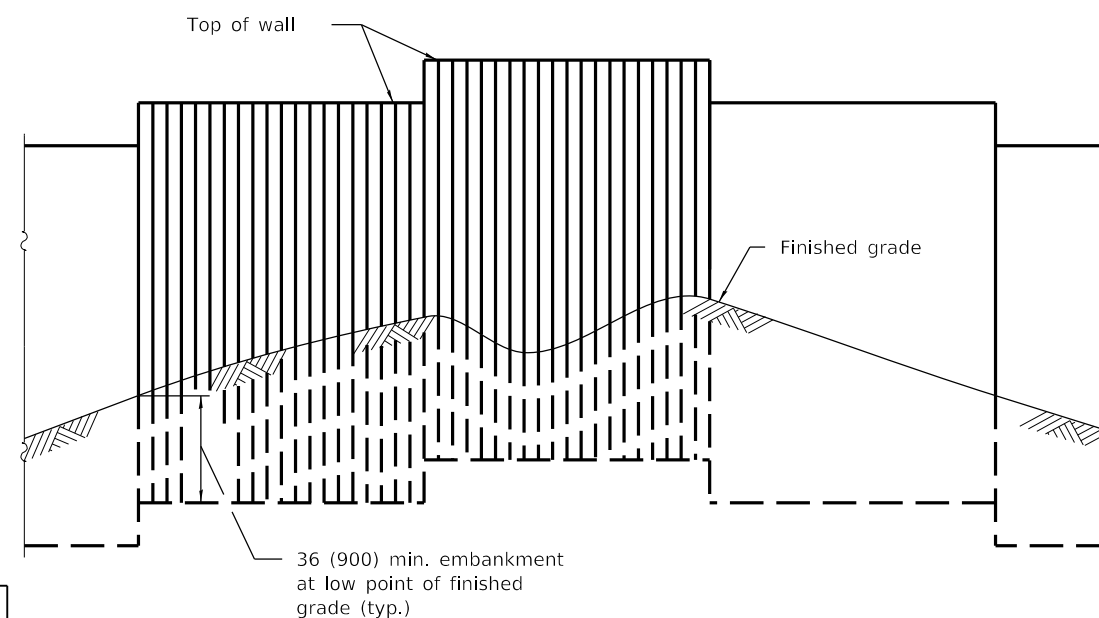


**PLAN**

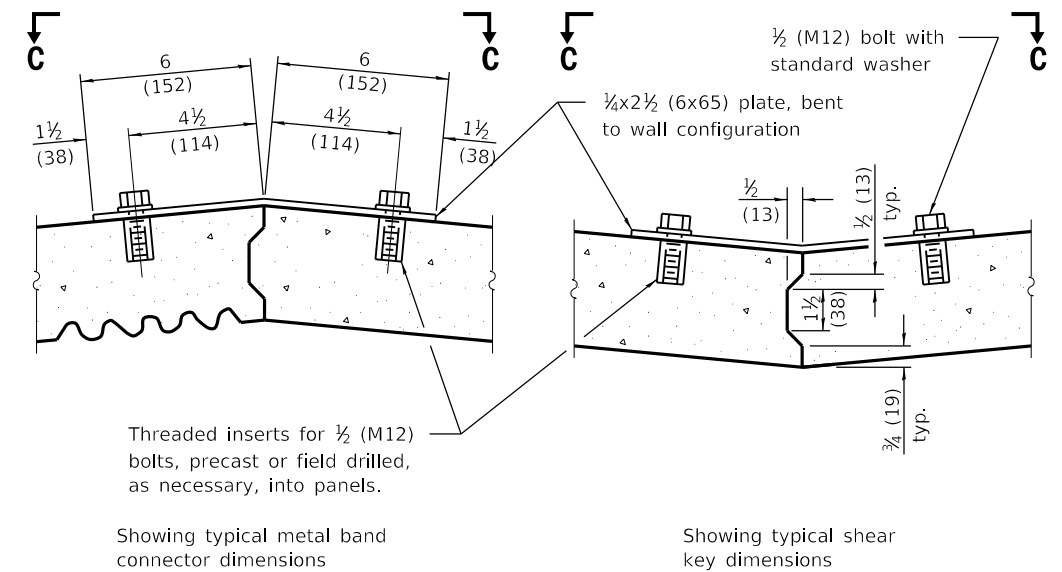


**ELEVATION**

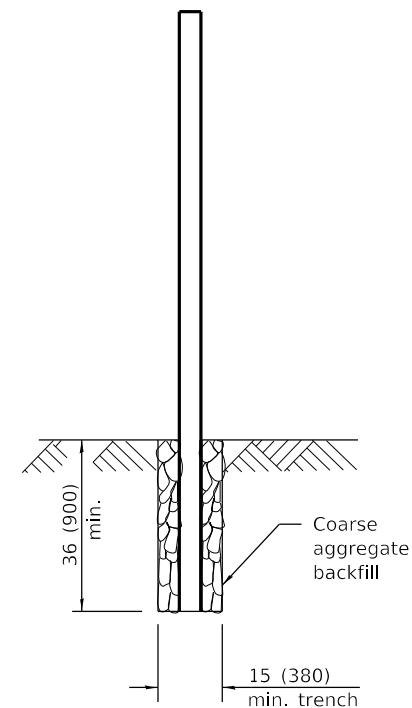


**ELEVATION**

(Showing installation of wall in irregular ground)



**SECTION B-B**



**SECTION A-A**

**GENERAL NOTES**

Loading for 80 mph (130 km/h) wind with 30% gust factor, normal to wall.

**ALLOWABLE STRESSES:**

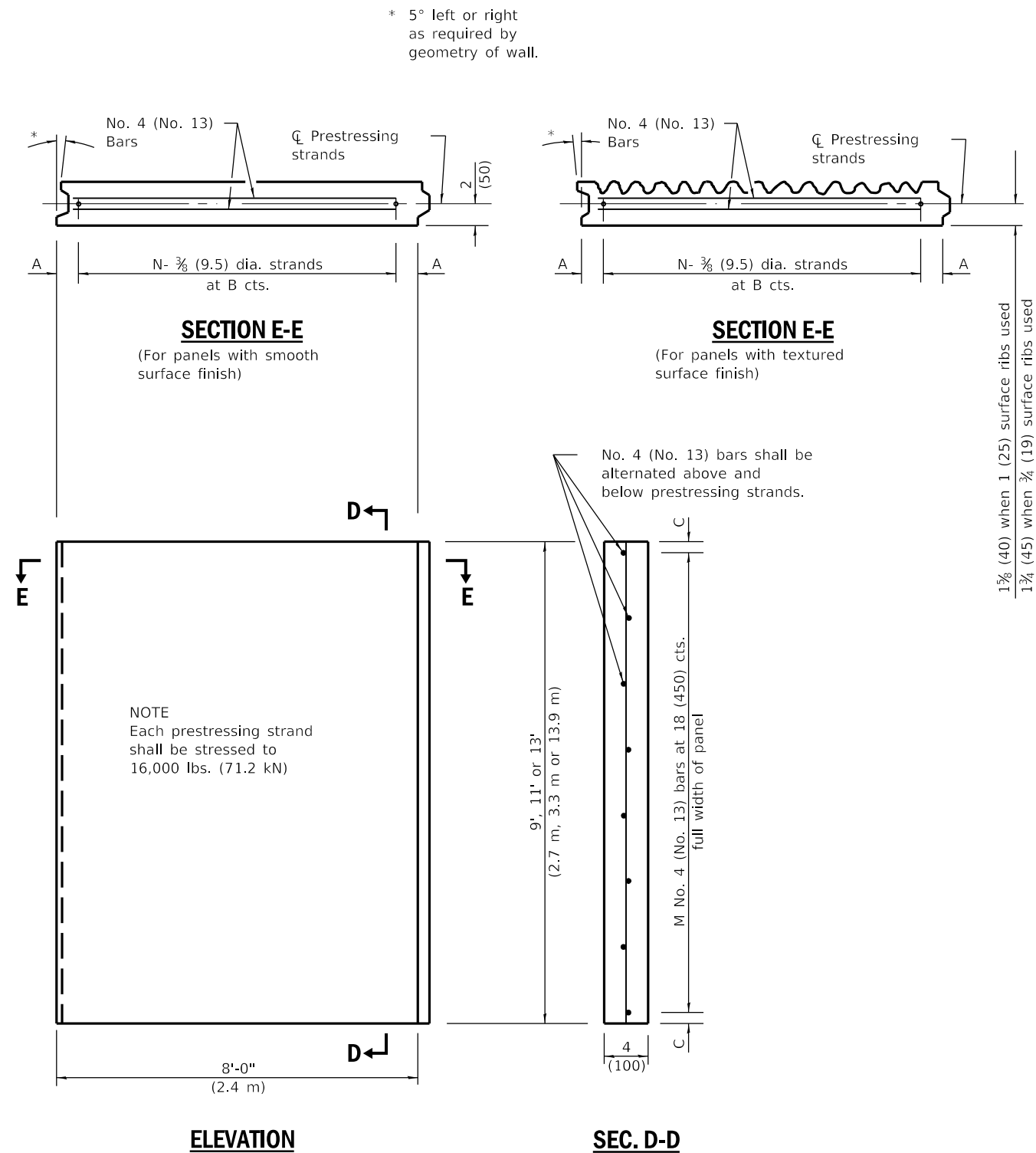
Concrete:  $f'_c = 3,500$  psi (24 MPa)  
 $f'_{ci} = 2,250$  psi (15 MPa)  
 Prestressing Steel:  $f'_s = 270,000$  psi (1860 MPa)  
 $f_{si} = 189,000$  psi (1300 MPa)  
 Reinforcing Steel:  $f'_y = 40,000$  psi min. (270 MPa)  
 Structural Steel:  $f_s = 20,000$  psi (138 MPa)  
 Minimum allowable soil bearing pressure:  $= 1.25$  tsf (120 kPa)

All dimensions are in inches (millimeters) unless otherwise shown.

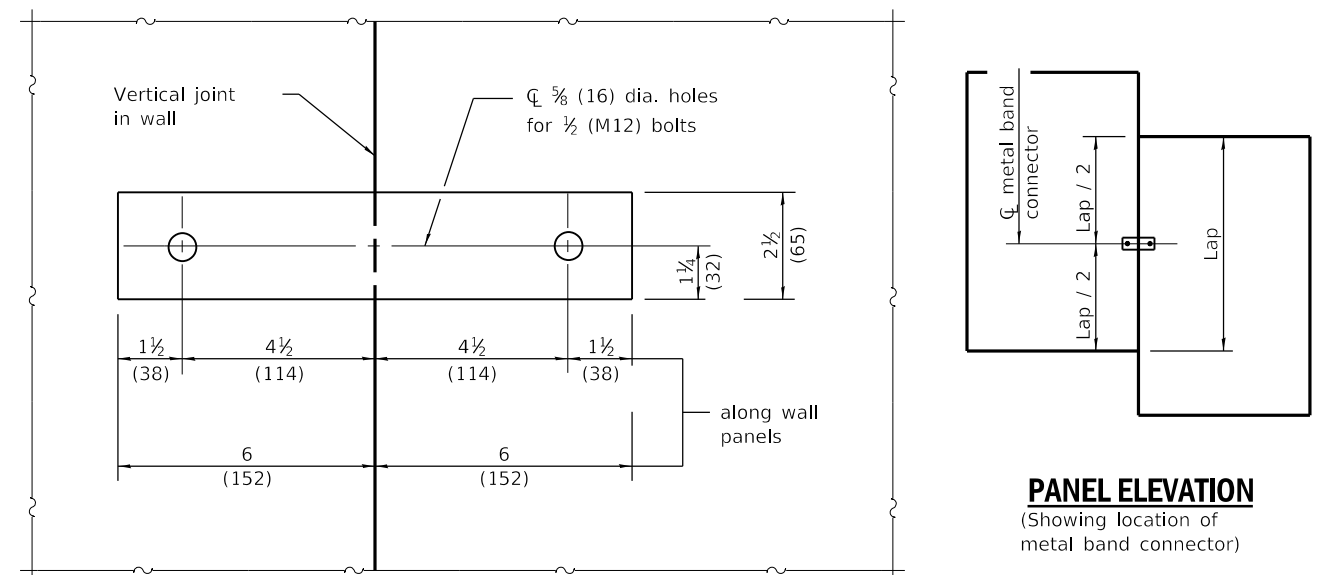
DATE	REVISIONS
1-1-09	Switched units to English (metric).
1-1-07	Soft converted metric reinforcement bars & corrected dimensions.

**SIGHT SCREEN  
PRECAST PRESTRESSED  
CONCRETE PANEL WALL**  
 (Sheet 1 of 2)

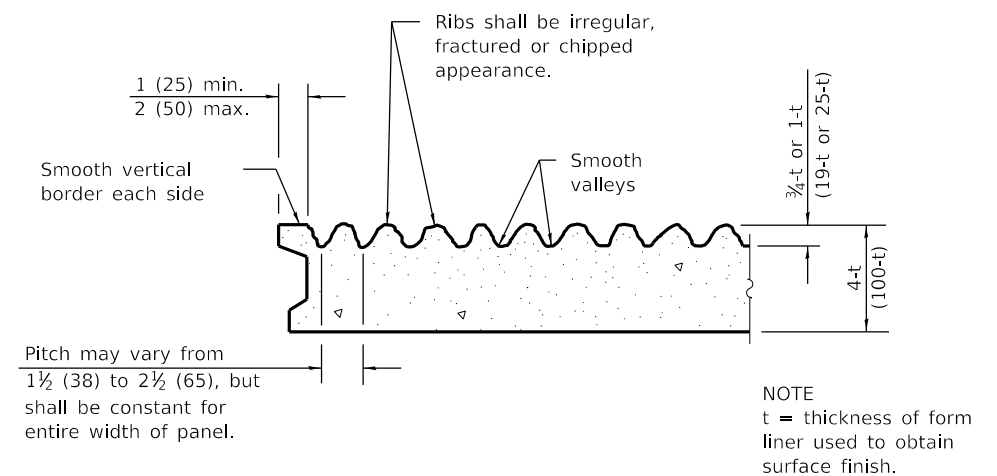
**STANDARD 639001-02**



**STRAND and REINFORCEMENT LAYOUT**



**SECTION C-C**



**TEXTURED SURFACE FINISH DETAIL**

Nominal Panel Size	A	N	B	C	M
8'-0" x 9'-0" (2.4 m x 2.7 m)	6 (150)	8	12 (300)	9 (225)	6
8'-0" x 11'-0" (2.4 m x 3.3 m)	3 (75)	11	9 (225)	3 (75)	8
8'-0" x 13'-0" (2.4 m x 3.9 m)	3 (75)	16	6 (150)	6 (150)	9

**SIGHT SCREEN  
PRECAST PRESTRESSED  
CONCRETE PANEL WALL**

(Sheet 2 of 2)

**STANDARD 639001-02**