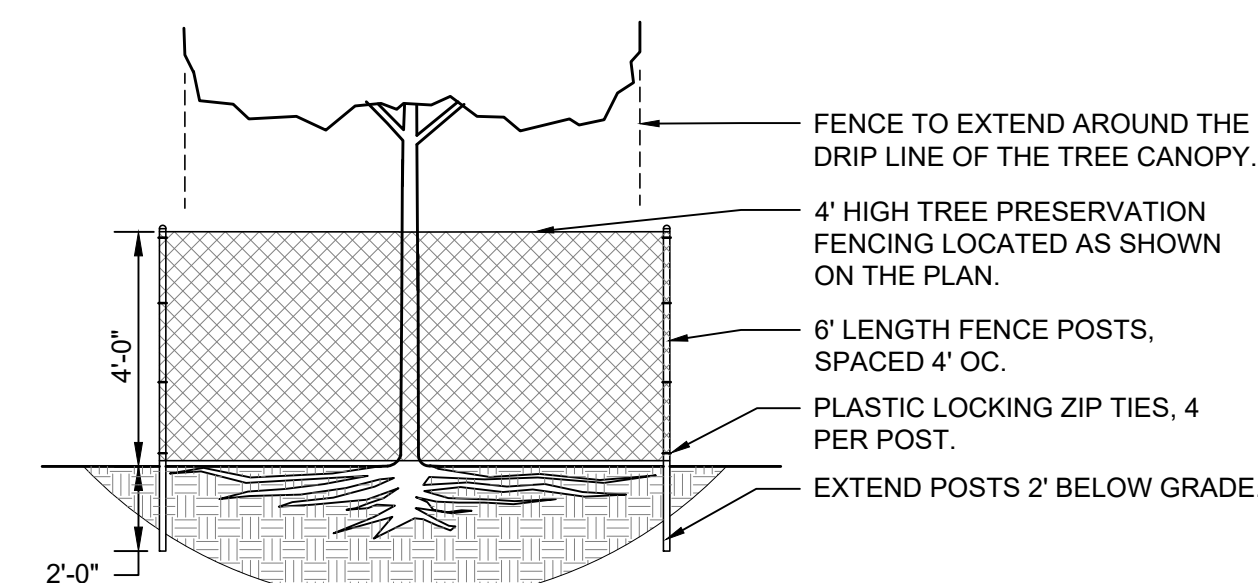


	QTY	Percent	SYM	BOTANICAL NAME (Family / Genus / Species)	COMMON NAME	SIZE	COMMENTS
Canopy Trees	3	30%	Canopy Tree	Celtis occidentalis	Hackberry	3' cal	Proposed
	4	40%	Canopy Tree	Gleditsia t. var Inermis	Honeylocust	Varies 10" to 17"	Existing
	3	30%	Canopy Tree	Ulmus 'Morton Glossy'	Triumph Elm	3' cal	Proposed
	0	0%					
Total:	10	100%					
Evergreen Trees	4	15%	Everg Tree	Picea species	Spruce	Varies 20' to 25' ht	Existing
	18	67%	Everg Tree	Picea abies	Norway Spruce	7' ht	Proposed
	5	19%	Everg Tree	Picea pungens	Colorado Spruce	7' ht	Proposed
	0	0%					
Total:	27	100%					
Understory Trees	3	23%	Understory	Amelanchier species	Serviceberry	15' to 20' ht clump	Existing
	4	31%	Understory	Crataegus species	Hawthorn	15' to 20' ht clump	Existing
	3	23%	Understory	Malus species	Crabapple	15' to 20' ht clump	Existing
	3	23%	Understory	Syringa species	Jap Tree Lilac	15' to 20' ht clump	Existing
Total:	13	100%					
Deciduous Shrubs	48	79%	Dec Shrub	Cotoneaster acutiflora	Peking Cotoneaster	2' ht (6' mature ht)	Proposed
	13	21%	Dec Shrub	Euonymus species	Burning Bush	6' ht	Existing
	0	0%					
	0	0%					
Total:	61	100%					
Evergreen Shrubs	91	100%	Everg Shrub	Juniperus chin. 'Sea Green'	Sea Green Juniper	5 gal (5' mature ht)	Proposed
	0	0%					
	0	0%					
	0	0%					
Total:	91	100%					

NO.	BOTANICAL NAME	COMMON NAME	SIZE	CONDITION	ACTION
1	FRAXINUS SP.	CLUMP ASH	(3) 5' DBH	FAIR	REMOVE
2	MALUS SP.	CRABAPPLE	(4) 8' DBH	FAIR	PRESERVE
3	MALUS SP.	CRABAPPLE	(4) 8' DBH	FAIR	PRESERVE
4	MALUS SP.	CRABAPPLE	(4) 8' DBH	FAIR	PRESERVE
5	PICEA SP.	SPRUCE	20' HT	FAIR	PRESERVE
6	PICEA SP.	SPRUCE	20' HT	FAIR	PRESERVE
7	GLEDITSIA SP.	HONEYLOCUST	15' DBH	GOOD	PRESERVE
8	GLEDITSIA SP.	HONEYLOCUST	(3) 10' DBH	GOOD	PRESERVE
9	GLEDITSIA SP.	HONEYLOCUST	17' DBH	GOOD	PRESERVE
10	CRATAEGUS SP.	HAWTHORN	(3) 4' DBH	FAIR	PRESERVE
11	CRATAEGUS SP.	HAWTHORN	(3) 4' DBH	FAIR	PRESERVE
12	CRATAEGUS SP.	HAWTHORN	(3) 4' DBH	FAIR	PRESERVE
13	CRATAEGUS SP.	HAWTHORN	(3) 4' DBH	FAIR	PRESERVE
14	PICEA SP.	SPRUCE	25' HT	GOOD	PRESERVE
15	PICEA SP.	SPRUCE	25' HT	GOOD	PRESERVE
16	AMELANCHIER SP.	SERVICEBERRY	(6) 3' DBH	GOOD	PRESERVE
17	AMELANCHIER SP.	SERVICEBERRY	(3) 3' DBH	GOOD	PRESERVE
18	AMELANCHIER SP.	SERVICEBERRY	(3) 3' DBH	GOOD	PRESERVE
19	FRAXINUS SP.	CLUMP ASH	(3) 5' DBH	POOR	REMOVE
20	FRAXINUS SP.	CLUMP ASH	(3) 5' DBH	POOR	REMOVE
21	SYRINGA SP.	TREE LILAC	(5) 3' DBH	FAIR	PRESERVE
22	SYRINGA SP.	TREE LILAC	(2) 3' DBH	FAIR	PRESERVE
23	GLEDITSIA SP.	HONEYLOCUST	11' DBH	GOOD	PRESERVE
24	FRAXINUS SP.	CLUMP ASH	(3) 5' DBH	POOR	REMOVE
25	SYRINGA SP.	TREE LILAC	(2) 3' DBH	FAIR	PRESERVE
26	FRAXINUS SP.	CLUMP ASH	(3) 5' DBH	POOR	REMOVE
27	FRAXINUS SP.	CLUMP ASH	(3) 5' DBH	POOR	REMOVE
28	PICEA SP.	SPRUCE	25' HT	GOOD	REMOVE
29	FRAXINUS SP.	CLUMP ASH	(3) 5' DBH	POOR	REMOVE
30	FRAXINUS SP.	CLUMP ASH	(3) 5' DBH	POOR	REMOVE
31	MALUS SP.	CRABAPPLE	(5) 6' DBH	GOOD	REMOVE
32	ALNUS SP.	ALDER	(3) 4' DBH	POOR	REMOVE
33	FRAXINUS SP.	CLUMP ASH	(3) 5' DBH	POOR	REMOVE
34	MALUS SP.	CRABAPPLE	(4) 6' DBH	GOOD	REMOVE
35	PICEA SP.	SPRUCE	25' HT	GOOD	REMOVE

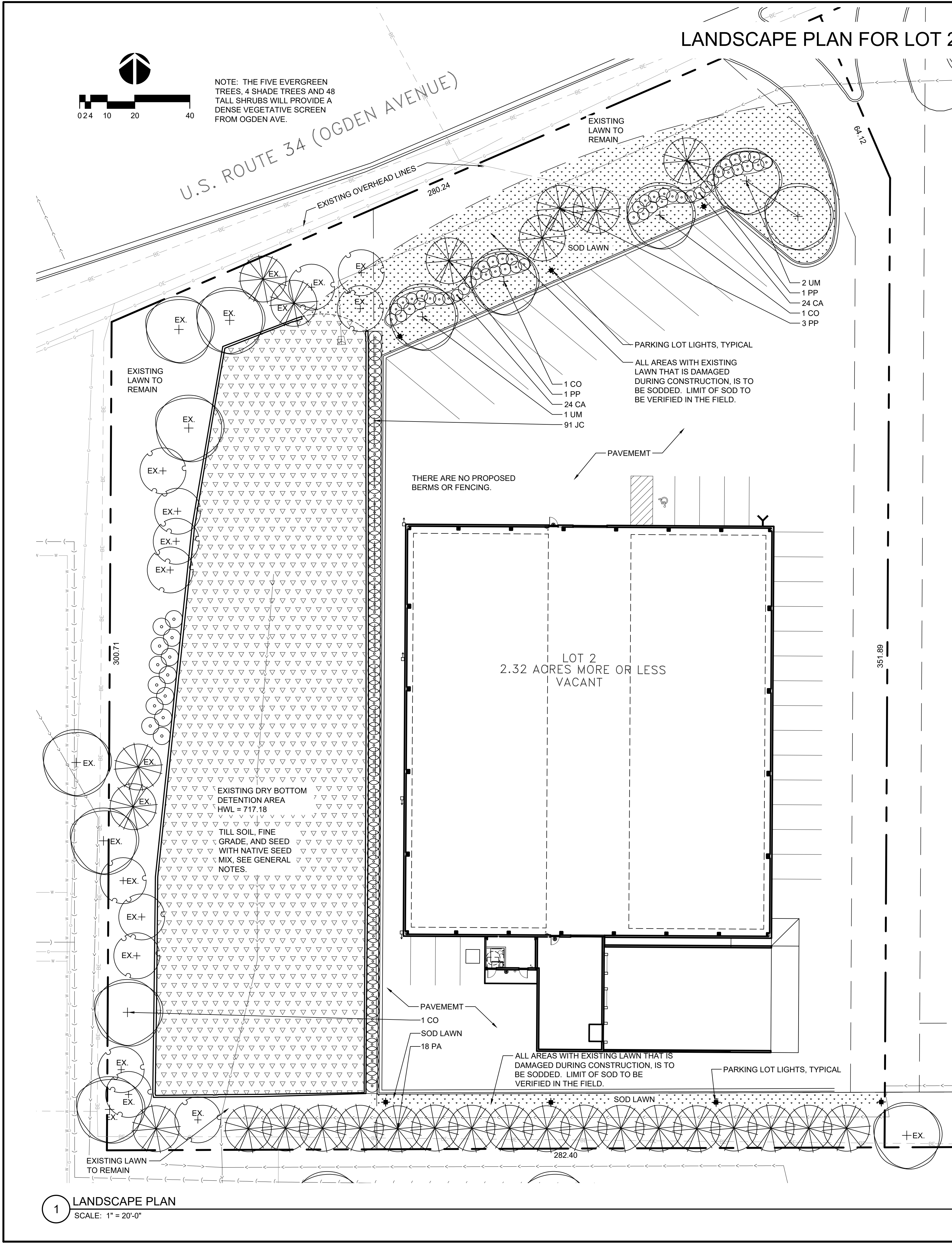
1. ALL EXISTING TREE LOCATIONS AND SIZES ARE TO BE VERIFIED IN THE FIELD BY THE CONTRACTOR. THE CONTRACTOR SHALL NOTIFY THE OWNER'S REPRESENTATIVE OF ANY DISCREPANCIES BETWEEN THE DRAWINGS AND ACTUAL FIELD CONDITIONS, PRIOR TO THE START OF CONSTRUCTION.
2. TREE PROTECTION FENCE IS TO REMAIN IN PLACE UNTIL GRADING IS COMPLETE AND THE SITE IS READY FOR SOD INSTALLATION.
3. THE CONTRACTOR SHALL BE RESPONSIBLE FOR MAINTAINING THE FENCE AND KEEPING IT INTACT AT ALL TIMES. ANY TREES DAMAGED DURING CONSTRUCTION SHALL BE REPLACED BY THE CONTRACTOR, AT THE CONTRACTOR'S EXPENSE.
4. VERIFY TREES TO BE REMOVED WITH LANDSCAPE ARCHITECT PRIOR TO REMOVING ANY TREES.
5. NO MATERIALS OR VEHICLES SHALL BE STORED, DRIVEN OR PARKED WITHIN TREE PROTECTION FENCING.
6. ALL GRADING, CONSTRUCTION EQUIPMENT AND MATERIALS SHALL BE FORBIDDEN FROM ENCRANCHING WITHIN THE TREE PROTECTION FENCING.
7. CRUSHED LIMESTONE OR ANY MATERIALS THAT MAY BE DETRIMENTAL TO TREES SHALL NOT BE DUMPED WITHIN THE TREE PROTECTION FENCING NOR SHALL THEY BE LOCATED AT ANY HIGHER ELEVATION WHERE DRAINAGE TOWARD THE TREE(S) COULD CONCEIVABLY AFFECT THE HEALTH OF THE TREE(S).
8. IF IT IS THE CONTRACTOR'S OPINION THAT ANY OF THE TREES TO BE PRESERVED WILL BE NEGATIVELY AFFECTED DURING THE CONSTRUCTION PROCESS, THE OWNER'S REPRESENTATIVE SHALL BE NOTIFIED IMMEDIATELY.
9. ANY TREE ROOTS FROM PRESERVED TREES THAT ARE UNEARTHED DURING CONSTRUCTION, SHALL BE CAREFULLY ROOT PRUNED USING THE STANDARDS OF THE NATIONAL ARBORISTS ASSOCIATION.

FENCE IS TO BE INSTALLED AROUND ALL EXISTING TREES TO REMAIN. POSTS SHALL BE PLACED 4' ON CENTER. AFTER INSTALLING ALL POSTS, TIGHTLY WRAP THE FABRIC ACROSS THE POSTS TO PREVENT SAGGING. THE FABRIC SHALL BE ATTACHED OUTSIDE THE POSTS, AWAY FROM THE TREE. SAFETY FENCE FABRIC SHALL BE ORANGE CONTRACTOR'S GRADE SMOOTH TOP DIAMOND PLASTIC FENCE. POSTS SHALL BE 6" LONG HEAVY DUTY GALVANIZED STEEL T-POSTS, SET TO A DEPTH OF 2' BELOW GRADE. POST SHALL NOT BE DRIVEN INTO TREE ROOTS OR UTILITY LINES. LOCKING TIES SHALL BE 8" PLASTIC LOCKING ZIP TIES, 4 PER POST.



Date 07/05/22	Project No. DWP 22-133
Scale 1" = 20'-0"	Sheet No.
Drawn By FERGUSON	L-1.0
Approved SCHULENBERG	



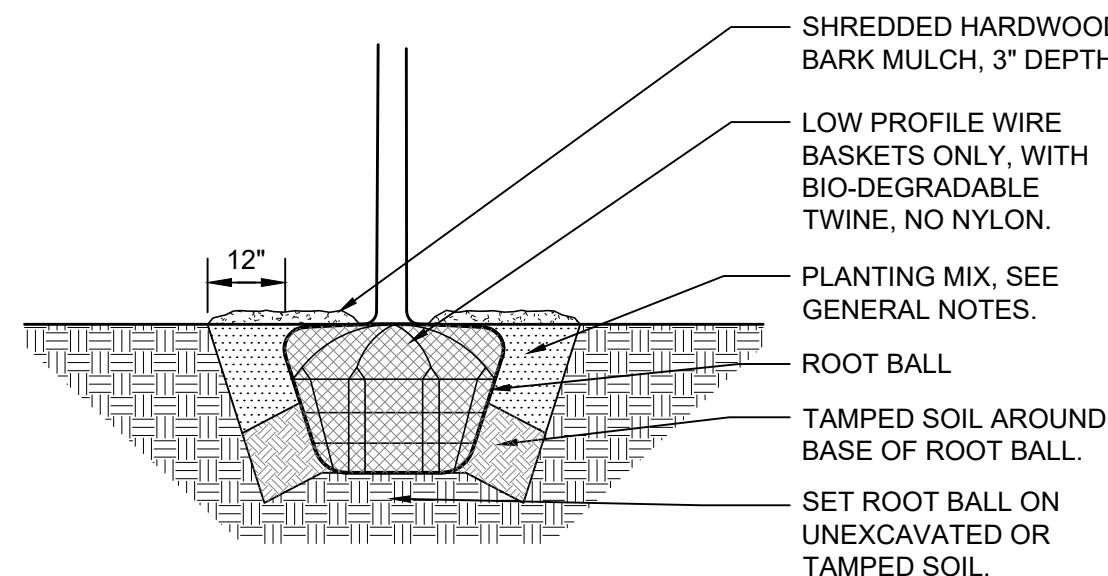


LANDSCAPE PLAN FOR LOT 2, U-HAUL CENTER OF AURORA

PLANT LIST FOR PROPOSED PLANTINGS

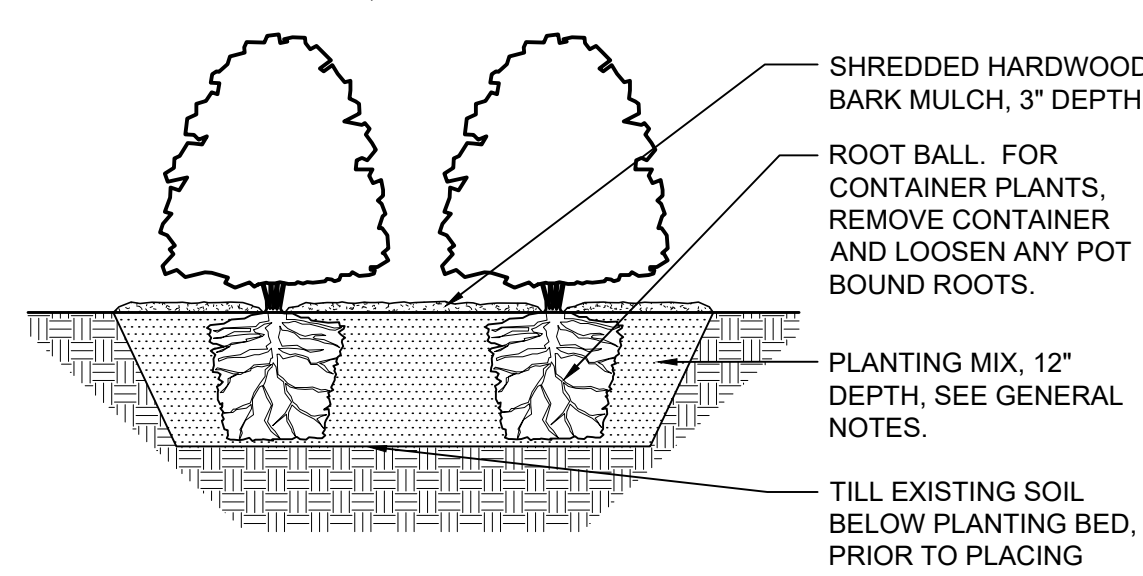
CODE	BOTANICAL NAME	COMMON NAME	SIZE	QTY	ADDITIONAL NOTES
DECIDUOUS TREES					
CO	CELTIS OCCIDENTALIS	COMMON HACKBERRY	3" CALIPER	3	BRANCHED UP 6'
UM	ULMUS 'MORTON GLOSSY'	TRIUMPH ELM	3" CALIPER	3	BRANCHED UP 6'
EVERGREEN TREES					
PA	PICEA ABIES	NORWAY SPRUCE	7' HT	18	
PP	PICEA PUNGENS	COLORADO SPRUCE	7' HT	5	
DECIDUOUS SHRUBS					
CA	COTONEASTER ACUTIFLORA	PEKING COTONEASTER	30" HT x 24" W	48	
EVERGREEN SHRUBS					
JC	JUNIPERUS CHINENSIS 'SEA GREEN'	SEA GREEN JUNIPER	24" HT x 36" W	91	

LOCATE ALL UNDERGROUND UTILITIES PRIOR TO DIGGING. TREE PIT WIDTH TO BE EXTENDED 12" AROUND THE ENTIRE ROOT BALL AS SHOWN IN THE DETAIL BELOW. TEST TREE PIT FOR DRAINAGE PRIOR TO INSTALLING TREE. PRUNE OFF ALL DEAD, BROKEN OR SCARRED BRANCHES, AND SHAPE PRUNE AS DIRECTED BY THE LANDSCAPE ARCHITECT. LOCATE ROOT FLARE IN ROOT BALL AND SET TREE HEIGHT SO THAT ROOT FLARE IS FLUSH WITH FINISH GRADE. WATER IN THE PLANTING MIX THOROUGHLY, WHILE KEEPING THE TREE PLUMB. STRAIGHTEN TREE IF SETTLING OCCURS. UN-TIE AND REMOVE TWINE FROM AROUND ROOT FLARE.



2 TREE PLANTING DETAIL  
NOT TO SCALE

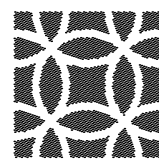
LOCATE ALL UNDERGROUND UTILITIES PRIOR TO PLANTING. SHRUBS BEDS ARE TO BE EXCAVATED AS A SINGLE SHRUB PIT. EXTEND SHRUB PIT WIDTH TO EDGES OF PLANT BED AS SHOWN ON THE LANDSCAPE PLAN. LOCATE ROOT FLARE IN ROOT BALL AND SET SHRUB HEIGHT SO THAT ROOT FLARE IS FLUSH WITH FINISH GRADE. REMOVE TWINE FROM ROOT FLARE. BACKFILL AND WATER IN THE PLANTING MIX THOROUGHLY, WHILE KEEPING THE SHRUB PLUMB. STRAIGHTEN SHRUB IF SETTLING OCCURS. MULCH LIMITS FOR SHRUBS SHALL EXTEND TO ALL OUTER EDGES OF PLANTING BEDS, SEE LANDSCAPE PLAN FOR BED LAYOUTS.



3 SHRUB PLANTING DETAIL  
NOT TO SCALE

GENERAL NOTES

- ALL DIMENSIONS AND SITE CONDITIONS ARE TO BE VERIFIED IN THE FIELD BY THE CONTRACTOR. NOTIFY THE LANDSCAPE ARCHITECT OF ANY DISCREPANCIES PRIOR TO STARTING WORK. SITE PLAN, ARCHITECTURE PLAN AND SITE SURVEY WERE PROVIDED BY OTHERS.
- SPECIES AND SIZES OF PLANTS LISTED IN THE PLANT LIST ARE SUBJECT TO AVAILABILITY AT TIME OF INSTALLATION. IF SUBSTITUTIONS ARE REQUIRED, THE CONTRACTOR SHALL SUBMIT REQUESTS TO THE LANDSCAPE ARCHITECT FOR APPROVAL.
- ALL OVERHEAD AND UNDERGROUND UTILITIES ARE TO BE LOCATED PRIOR TO DIGGING OR EXCAVATION. IF UTILITIES OR OTHER OBSTRUCTIONS ARE DISCOVERED TO CONFLICT WITH GRADING, PLANT OR MATERIALS PLACEMENT, NOTIFY THE LANDSCAPE ARCHITECT SO THAT ADJUSTMENTS MAY BE MADE PRIOR TO PROCEEDING.
- CONTRACTOR SHALL TAKE ALL PRECAUTIONS TO PROTECT EXISTING PLANTS, LAWN AREA, FENCES, SITE FEATURES AND PAVING TO REMAIN. ANY DAMAGE TO THESE EXISTING AREAS OR FEATURES SHALL BE REPLACED BY THE CONTRACTOR AT THEIR EXPENSE. DAMAGED LAWN AREAS SHALL BE TILLED, RE-GRADED, TOPSOIL ADDED AS NEEDED AND BE RESTORED WITH SOD. REPLACED FEATURES, PLANTS AND SOD SHALL BE WARRANTED BY THE CONTRACTOR FOR A PERIOD OF ONE YEAR.
- PROVIDE POSITIVE DRAINAGE AT ALL TIMES. DO NOT OBSTRUCT THE NATURAL OR ENGINEERED DRAINAGE FLOW PATTERN. NOTIFY THE LANDSCAPE ARCHITECT OF ANY DRAINAGE CONCERNS.
- IMPORTED TOPSOIL FOR THIS PROJECT SHALL BE FRIABLE LOAM OR SANDY LOAM, COMPRISED OF BETWEEN 20% AND 50% SILT, 10% AND 25% CLAY, AND 30% AND 60% SAND. THE pH LEVEL SHALL BE BETWEEN 6.0 AND 7.2 AND THE ORGANIC MATTER CONTENT SHALL BE BETWEEN 3% AND 6%. TOPSOIL SHALL BE FREE OF SEEDS, STONES, LARGE CLUMPS, ROOTS, LEAVES AND DEBRIS, AND SHALL NOT BE DELIVERED WHILE IN A FROZEN OR MUDDY CONDITION. CONTRACTOR SHALL PROVIDE A RECENT SOIL TEST ANALYSIS FOR ALL SOIL TO BE USED. THE ANALYSIS MUST INCLUDE THE INFORMATION REQUIRED ABOVE. IF TESTED TOPSOIL REQUIRES AMENDMENTS TO COMPLY WITH REQUIREMENTS, CONTRACTOR SHALL AMEND THE TOPSOIL, RE-TEST AND RESUBMIT THE ANALYSIS FOR APPROVAL PRIOR TO BRINGING THE TOPSOIL ON SITE.
- EXISTING TOPSOIL FROM ON SITE THAT HAS BEEN STOCKPILED MAY BE USED IF IT MEETS THE REQUIREMENTS FOR IMPORTED TOPSOIL. THIS INCLUDES CONDUCTING SOIL TEST ANALYSIS AND ADDING AMENDMENTS AS NEEDED SO THAT THE SOIL COMPLIES WITH THE REQUIREMENTS.
- SOD SHALL BE A TALL FESCUE BLEND SOD, SUCH AS BLACK BEAUTY OR APPROVED EQUAL. BLUEGRASS BLEND SOD IS NOT ACCEPTABLE, UNLESS APPROVED BY THE LANDSCAPE ARCHITECT.
- NATIVE SEEDING IN THE BIORETENTION AREA TO BE "SWALE SEED MIX" AVAILABLE FROM CARDNO NATIVE PLANT NURSERY. INSTALL SEED MIX WITH TEMPORARY COVER, PERMANENT GRASSES AND FORBS. SEED SHALL BE INSTALLED DURING THE RECOMMENDED DATES AND USING THE RECOMMENDED METHODS BY CARDNO NURSERY. SEED TO BE INSTALLED AT A RATE 37 PLS POUNDS PER ACRE. APPROXIMATELY 16 PLS POUNDS ARE REQUIRED. SEEDED AREAS ARE TO BE COVERED WITH A SHORT TERM EROSION CONTROL BLANKET.
- ALL PLANT MATERIAL MUST BE SPECIMEN QUALITY, TRUE TO SPECIES AND VARIETY, WITH FULL, DENSE AND HEALTHY FORMS. PLANTS THAT ARE NOT SPECIMEN QUALITY WILL NOT BE ACCEPTED. ALL PLANTS MUST HAVE BEEN LOCALLY GROWN AT A STATE INSPECTED AND CERTIFIED NURSERY, LOCATED WITHIN 50 MILES OF THE PROJECT SITE.
- ALL TREES SHALL BE INSPECTED BY THE LANDSCAPE ARCHITECT, AT THE NURSERY, PRIOR TO DIGGING. TREES THAT ARE ACCEPTABLE WILL BE SEALED. ALL SEALS APPLIED BY THE LANDSCAPE ARCHITECT MUST REMAIN ON THE TREES AND ARE NOT TO BE REMOVED BY THE CONTRACTOR. ALL TREES MUST HAVE SEALS IN PLACE AT TIME OF ACCEPTANCE OR WILL BE AUTOMATICALLY REJECTED. HEELED-IN TREES WILL NOT BE ACCEPTED WITHOUT PRIOR APPROVAL FROM THE LANDSCAPE ARCHITECT.
- PLANT MATERIAL SHALL ONLY BE INSTALLED WITHIN THE FOLLOWING DATES:  
DECIDUOUS TREES AND SHRUBS: APR 1 THROUGH NOV 15  
EVERGREEN SHRUBS: APR 1 THROUGH NOV 1
- TEST TREE PITS AND PLANT BEDS FOR ADEQUATE DRAINAGE. FILL PLANT PIT WITH 12" OF WATER. IF WATER LEVEL DOES NOT DROP A MINIMUM OF ONE INCH PER HOUR, NOTIFY THE LANDSCAPE ARCHITECT OF DRAINAGE ISSUES.
- PLANTING MIX FOR ALL PLANTINGS SHALL BE AS FOLLOWS: 80% APPROVED TOPSOIL AND 20% ONE STEP CONDITIONER FROM MIDWEST TRADING. MIXING OF PLANTING MIX COMPONENTS SHALL BE THOROUGHLY BLENDED OUTSIDE THE PLANTING PITS, PRIOR TO PLANTING.
- ALL PLANT BEDS ARE TO BE WELL SHAPED 'SPADE CUT' EDGES, 3" DEPTH, IN LINES OR IN CURVES AS SHOWN ON THE DRAWINGS.
- ALL PLANT MATERIAL, INCLUDING SEED OR SOD, SHALL BE MAINTAINED BY THE CONTRACTOR UNTIL 'ACCEPTANCE' IS GRANTED. MAINTENANCE SHALL INCLUDE, WATERING, WEEDING, PRUNING, STRAIGHTENING, SPRAYING, MULCH REPLACEMENT AND MOWING.
- THE CONTRACTOR SHALL REQUEST AN INSPECTION OF LANDSCAPE PLANTING UPON SUBSTANTIAL COMPLETION FOR "ACCEPTANCE". REQUEST MUST BE SUBMITTED TO LANDSCAPE ARCHITECT AT LEAST TEN DAYS PRIOR TO ANTICIPATED INSPECTION. UPON INSPECTION THE LANDSCAPE ARCHITECT SHALL PREPARE A PUNCH LIST OF UNACCEPTABLE OR OUTSTANDING ITEMS. AFTER THE ITEMS HAVE BEEN SATISFACTORILY COMPLETED AND REVIEWED, THE LANDSCAPE ARCHITECT WILL RECOMMEND "ACCEPTANCE". SOD AND SEED SHALL BE REVIEWED FOR ACCEPTANCE, ONLY AFTER THEY HAVE FULLY ROOTED AND HAVE BEEN MOWED AT LEAST TWICE.
- ALL PLANT MATERIAL SHALL BE GUARANTEED FOR A PERIOD OF ONE YEAR FROM DATE OF "ACCEPTANCE". AT OR NEAR THE END OF THE GUARANTEE PERIOD, THE CONTRACTOR SHALL REQUEST AN INSPECTION OF LANDSCAPE PLANTING FOR "FINAL ACCEPTANCE". REQUEST MUST BE SUBMITTED TO LANDSCAPE ARCHITECT AT LEAST TEN DAYS PRIOR TO ANTICIPATED INSPECTION. UPON INSPECTION THE LANDSCAPE ARCHITECT SHALL PREPARE A PUNCH LIST OF UNACCEPTABLE ITEMS. AFTER THE ITEMS HAVE BEEN SATISFACTORILY REPLACED OR REPAIRED, REVIEWED AND APPROVED, THE LANDSCAPE ARCHITECT WILL RECOMMEND "FINAL ACCEPTANCE".



DANIEL WEINBACH  
&  
PARTNERS, LTD.

Landscape Architects

1142 W. Madison Street  
Suite 206  
Chicago, IL 60607

312 427-2888



Civil Engineering &  
Land Development Consulting

26316 Mapleview Drive  
Plainfield, IL 60585  
815.577.1707 T

PLANS PREPARED FOR:

UHC CHICAGO W SUBURBS

1854 DOUGLAS ROAD  
MONTGOMERY, IL 60583  
312 576-4581

Revisions

8.

7.

6.

5.

4.

3. PER COA APPLICATION  
COMPLETENESS REVIEW 12/22/22  
(22-1201)

2. PER COA APPLICATION  
COMPLETENESS REVIEW 11/01/22  
(22-0729)

1. ISSUED FOR REVIEW 07/05/22

LANDSCAPE  
PLAN FOR LOT 2,  
U-HAUL CENTER  
OF AURORA

SW CORNER OF IL RT 59 AND US RT 34  
AURORA, IL 60504

Sheet Title

LANDSCAPE  
PLAN

Date

07/05/22

Project No.

DWP 22-133

Scale

1" = 20'-0"

Sheet No.

Drawn By

FERGUSON

Approved

SCHULENBERG

L-2.0