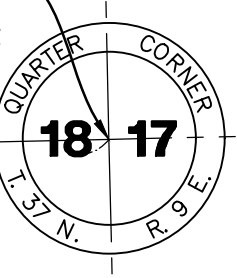
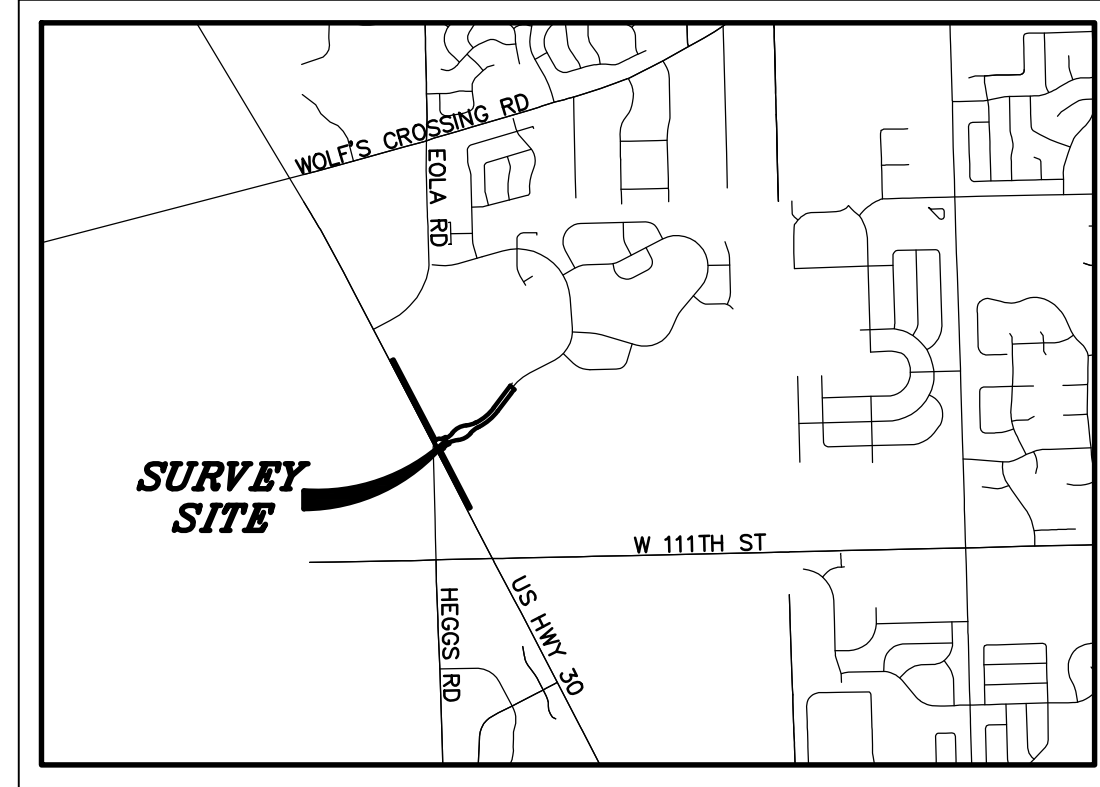


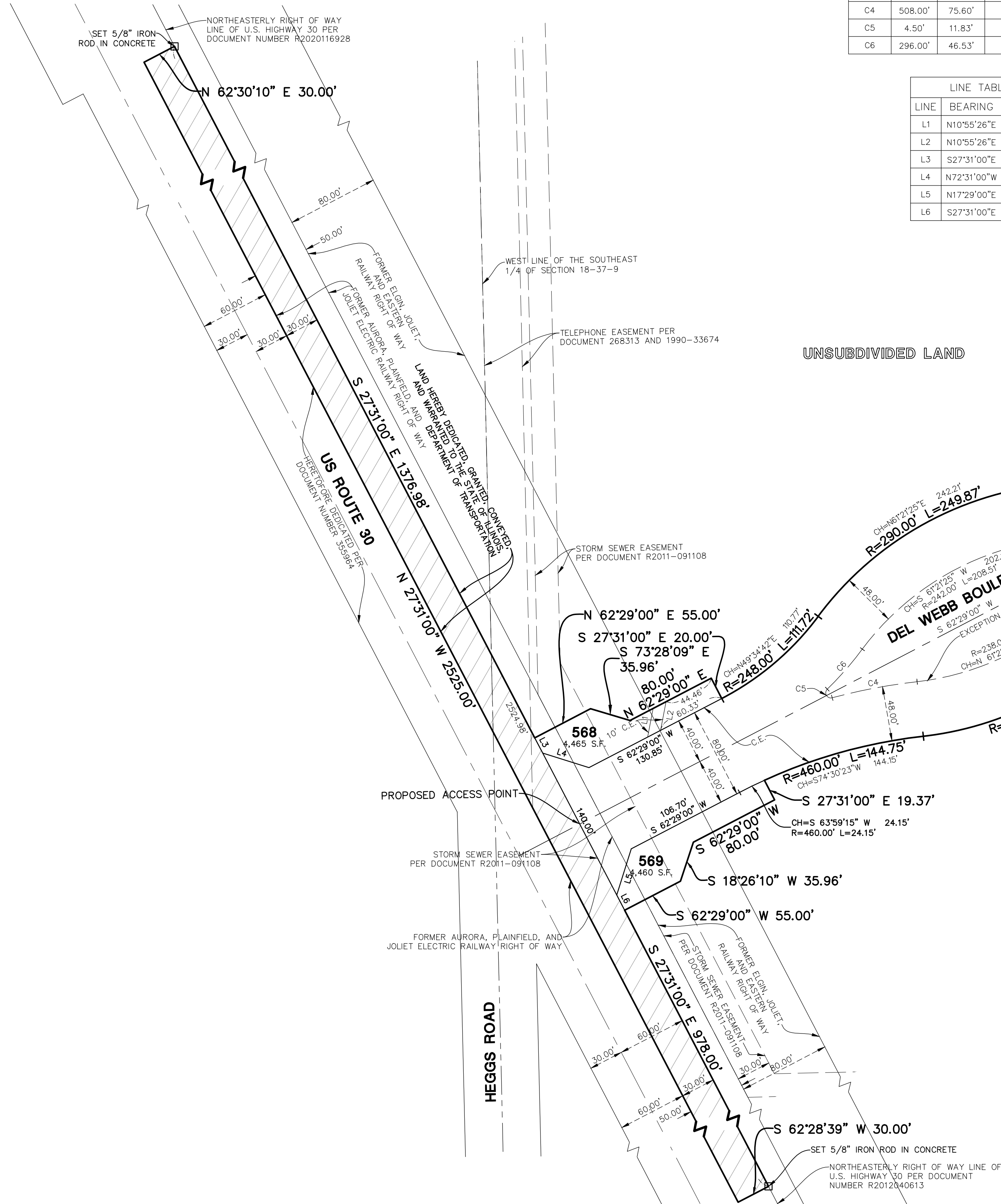
POINT OF COMMENCEMENT
FOUND CONCRETE
MONUMENT AT CORNER

[illegible]

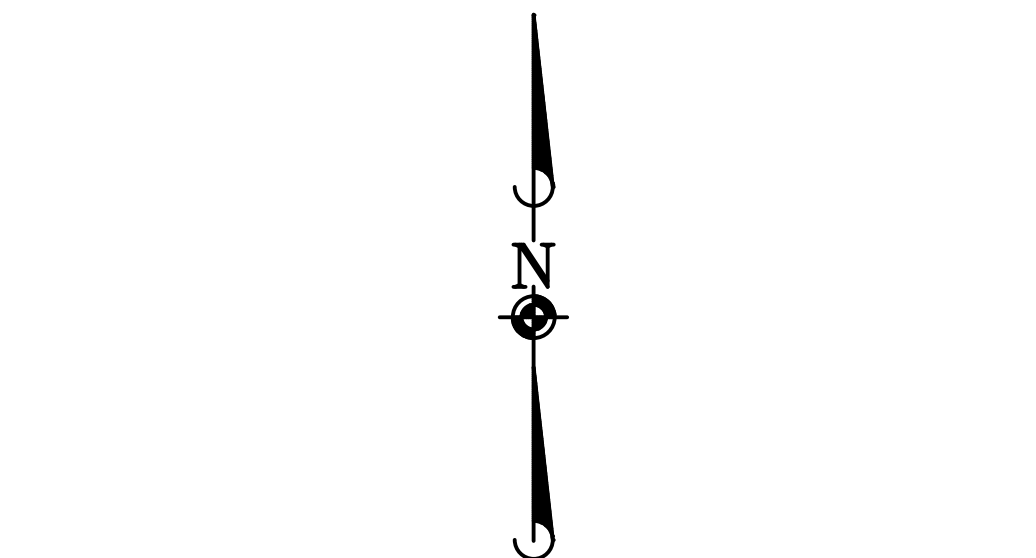
NOT TO SCALE

CURVE TABLE				
CURVE	RADIUS	LENGTH	CHORD BEARING	CHORD
C1	402.00'	64.30'	S81°27'29"W	64.24'
C2	4.50'	11.87'	N27°31'54"W	8.72'
C3	384.00'	57.93'	N43°44'22"E	57.87'
C4	508.00'	75.60'	N79°15'26"E	75.53'
C5	4.50'	11.83'	S29°39'48"E	8.71'
C6	296.00'	46.53'	S41°10'35"W	46.48'

LINE TABLE		
LINE	BEARING	LENGTH
L1	N10°55'26"E	25.53'
L2	N10°55'26"E	25.53'
L3	S27°31'00"E	15.00'
L4	N72°31'00"W	42.43'
L5	N17°29'00"E	42.43'
L6	S27°31'00"E	15.00'




UNSUBDIVIDED LAND



GRAPHIC SCALE

A horizontal graphic scale bar with tick marks at intervals of 60 units, labeled 60, 0, 30, 60, 120, and 240. The bar consists of alternating black and white segments. The first segment (0-60) is divided into four equal parts by three vertical lines. Subsequent segments are solid black or white. The total length represents 240 units.

COORDINATES AND BEARINGS ARE BASED UPON THE ILLINOIS STATE PLANE COORDINATE SYSTEM, EAST ZONE (NAD 83), ADJUSTED TO GROUND VALUES, AS ESTABLISHED BY A REAL-TIME KINEMATIC (RTK) GLOBAL NAVIGATION SATELLITE SYSTEM (GNSS) UTILIZING THE TRIMBLE VRS NOW NETWORK.

- _____ = PROPERTY LINE
 _____ = LOT LINE
 _____ = RIGHT OF WAY LINE
 _____ = EASEMENT LINE
 _____ = SECTION LINE
 □ = SET CONCRETE MONUMENT
 = LAND HEREDICATED, GRANTED, CONVEYED,
 AND WARRANTED TO THE STATE OF ILLINOIS,
 DEPARTMENT OF TRANSPORTATION

Development Data Table: Final Plat		
Description	Value	Unit
a) Tax/Parcel Identification Number(s) (PINs):		
07-01-18-100-010-0010, 07-01-18-400-005-0010		
07-01-18-400-006-0010, 07-01-18-400-006-0020		
b) Subdivided Area	5.203	Acre
	226,652	Square Feet
c) Proposed New Right-of-way	4.998	Acre
	217,727	Square Feet
	1,507	Linear Feet of Centerline
d) Proposed New Easements	2.970	Acre
	129,360	Square Feet

Manhard
CONSULTING LTD.
100 Bryncreg Drive, Langensiefen, L 97-148
Telefon +49 9361 900-10 Fax +49 9361 900-100
E-Mail: info@manhard.de
Internet: www.manhard.de
Branchen: Bauwesen • Maschinenbau • Elektrotechnik •
Chemieingenieurwesen • Luftverkehr • Landmaschinen • Pflanzenbau

PROPOSED DEVELOPER FOR ALL:

OWNER: LINCOLN PRAIRIE AURORA LLC
PETITIONER: PULTE HOME COMPANY
1900 E GOLF ROAD, SUITE 300
SCHAUMBURG, IL 60173
CONTACT: MATT BROLLEY, P.E.

LINCOLN PRAIRIE BY DEL WEBB - PHASE 2B

AURORA, ILLINOIS

FINAL PLAT OF SUBDIVISION

PROJ. MGR.:	<u>JID</u>
PROJ. ASSOC.:	<u>PGA</u>
DRAWN BY:	<u>PGA</u>
DATE:	<u>12/22/22</u>
SCALE:	<u>1"=60'</u>
EXHIBIT	
1	2
PULAUIL01	

