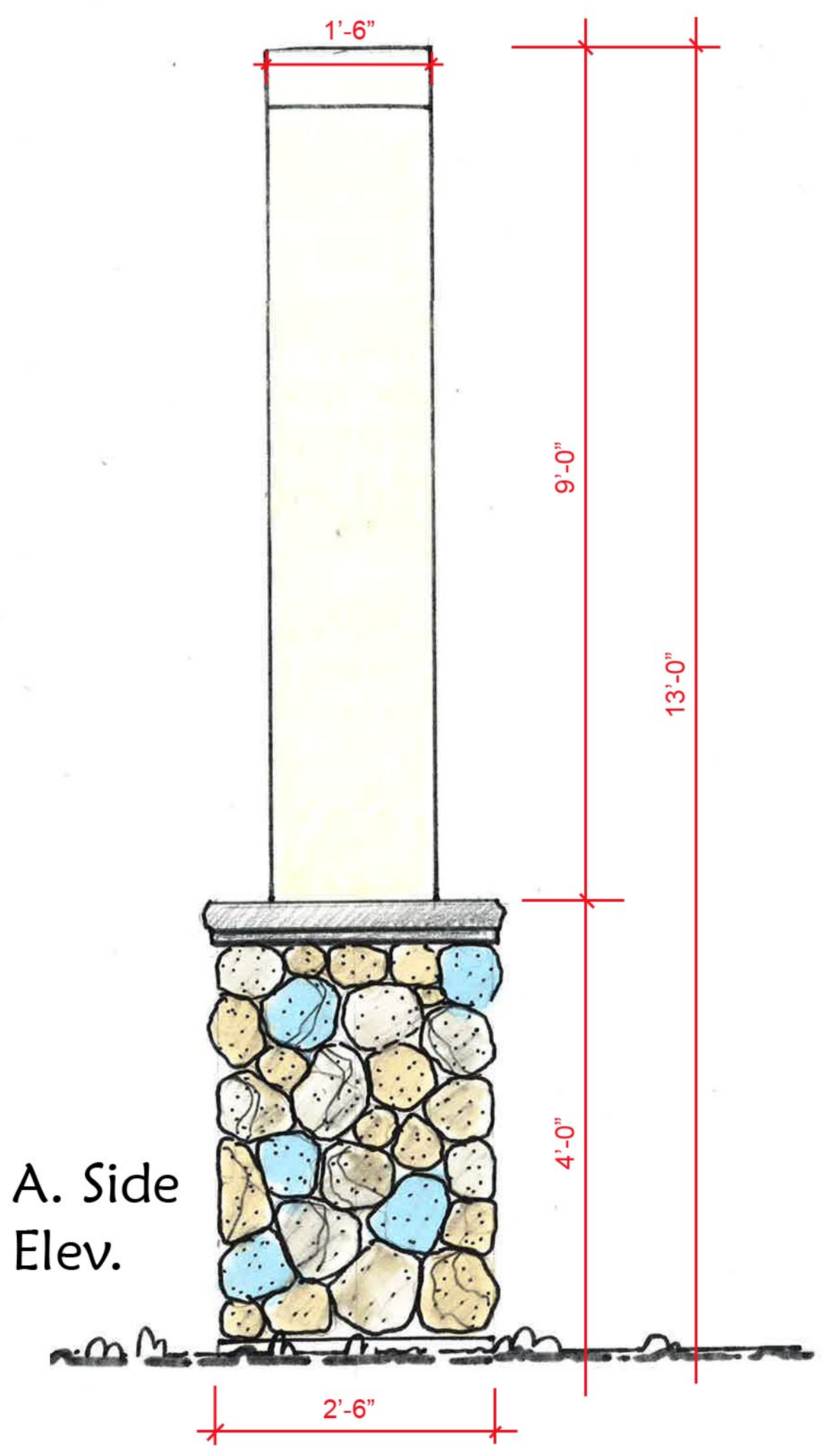
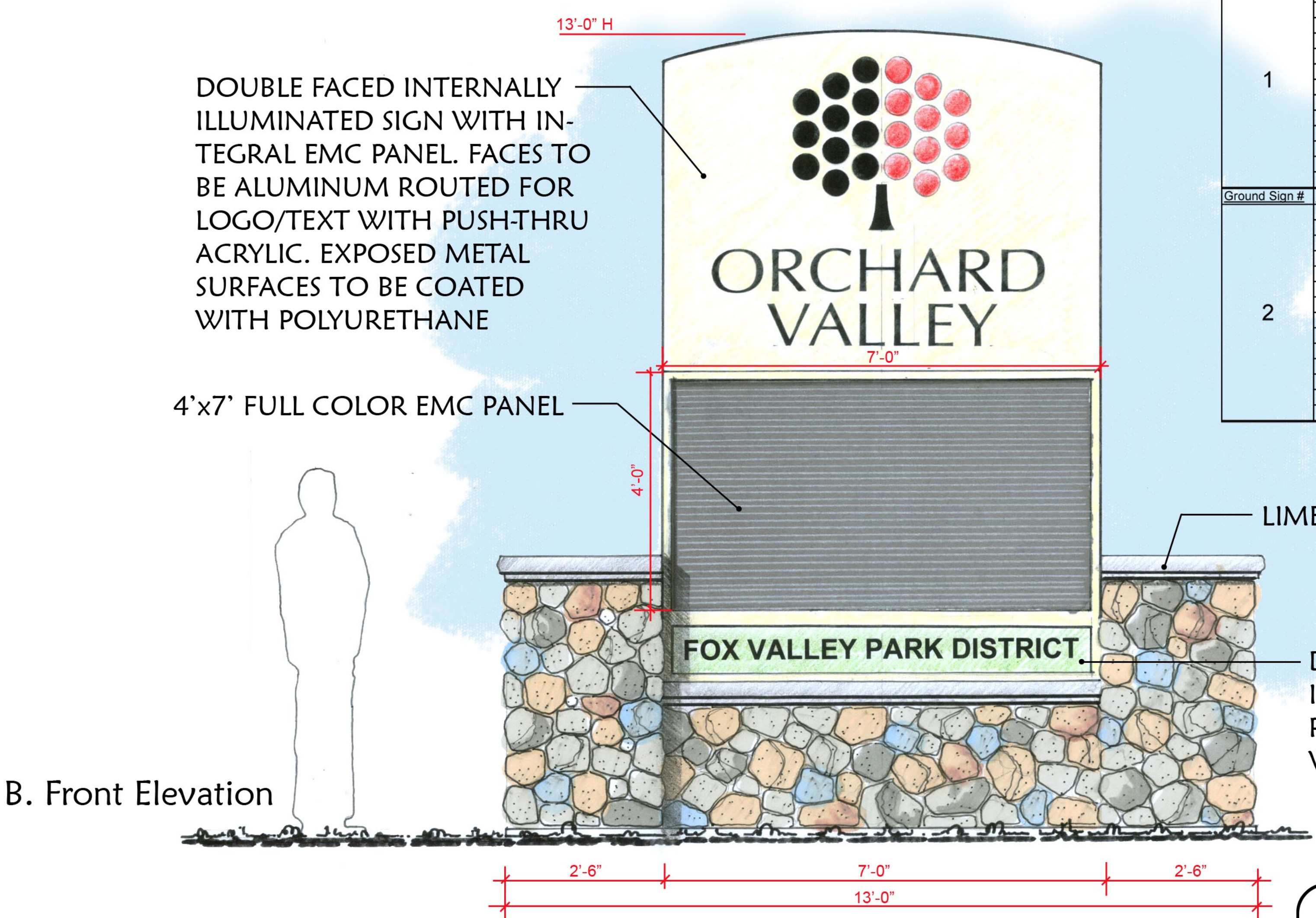


Elevations



A. Side Elev.



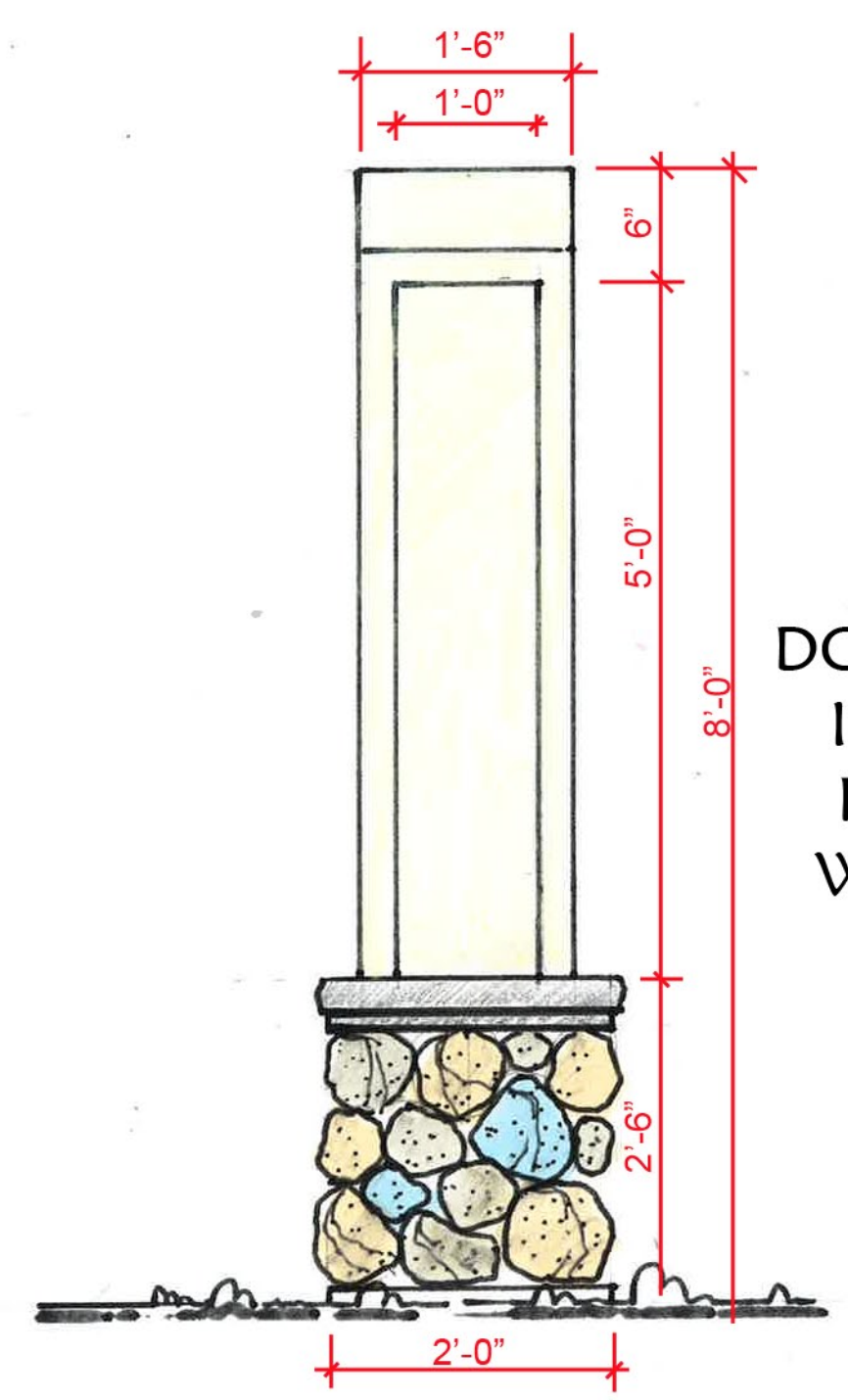
B. Front Elevation

Elevation Data Table: Ground Signage			
Ground Sign #	Description	Value	Unit
1	i) Length of street frontage - on which Sign is Located	2.937	Feet
	ii) Width of Sign Face	7.00	Feet
	iii) Height of Sign Face	11.00	Feet
	iv) Square Footage of Sign Face	77	Square Feet
	v) Height of Sign (overall)	13	Feet
	vi) Width of Sign (overall)	13	Feet
	vii) Type of Sign	Ground Mounted informational	
	viii) Type of Sign Base	Stone Masonry	
	ix) Is there a Digital Display	Yes	
	If Yes then, Location of Digital Display on the sign	Center	
2	Height of Digital Display	4	Feet
	Width of Digital Display	7	Feet
	Square Footage of Digital Display	28	Square Feet
	Percent of Digital Display Sign Coverage	38%	Percent
	i) Length of street frontage - on which Sign is Located	2.937	Feet
	ii) Width of Sign Face	13.00	Feet
	iii) Height of Sign Face	5.60	Feet
	iv) Square Footage of Sign Face	73	Square Feet
	v) Height of Sign (overall)	8	Feet
	vi) Width of Sign (overall)	15	Feet
	vii) Type of Sign	Ground Mounted informational	
	viii) Type of Sign Base	Stone Masonry	
	ix) Is there a Digital Display	Yes	
	If Yes then, Location of Digital Display on the sign	Left Side	
	Height of Digital Display	4	Feet
	Width of Digital Display	7	Feet
	Square Footage of Digital Display	28	Square Feet
	Percent of Digital Display Sign Coverage	38%	Percent

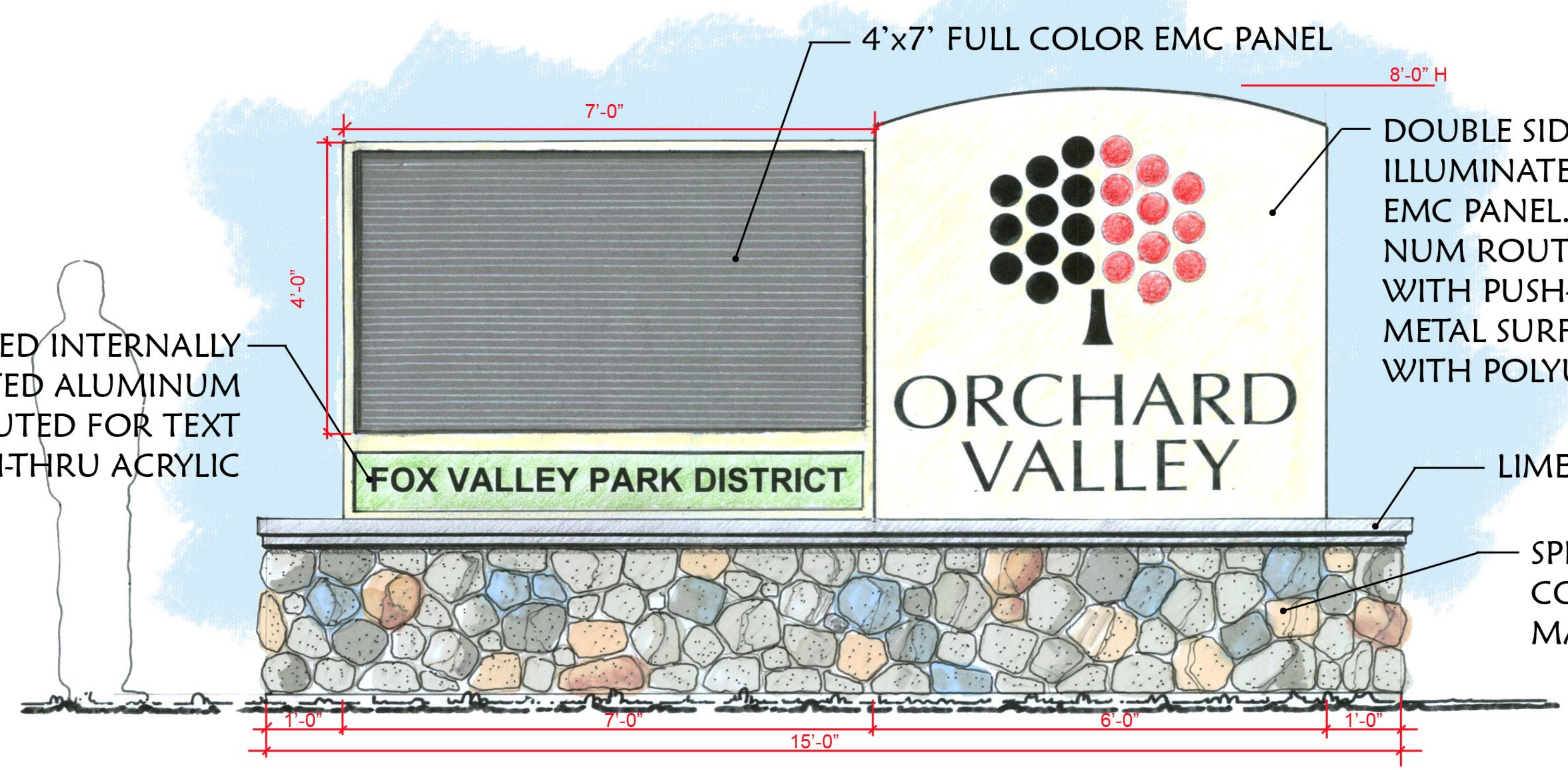
LIMESTONE CAP & COPING

DOUBLE FACED INTERNALLY ILLUMINATED ALUMINUM PANEL ROUTED FOR TEXT WITH PUSH-THRU ACRYLIC

Sign 01



A. Side Elevation



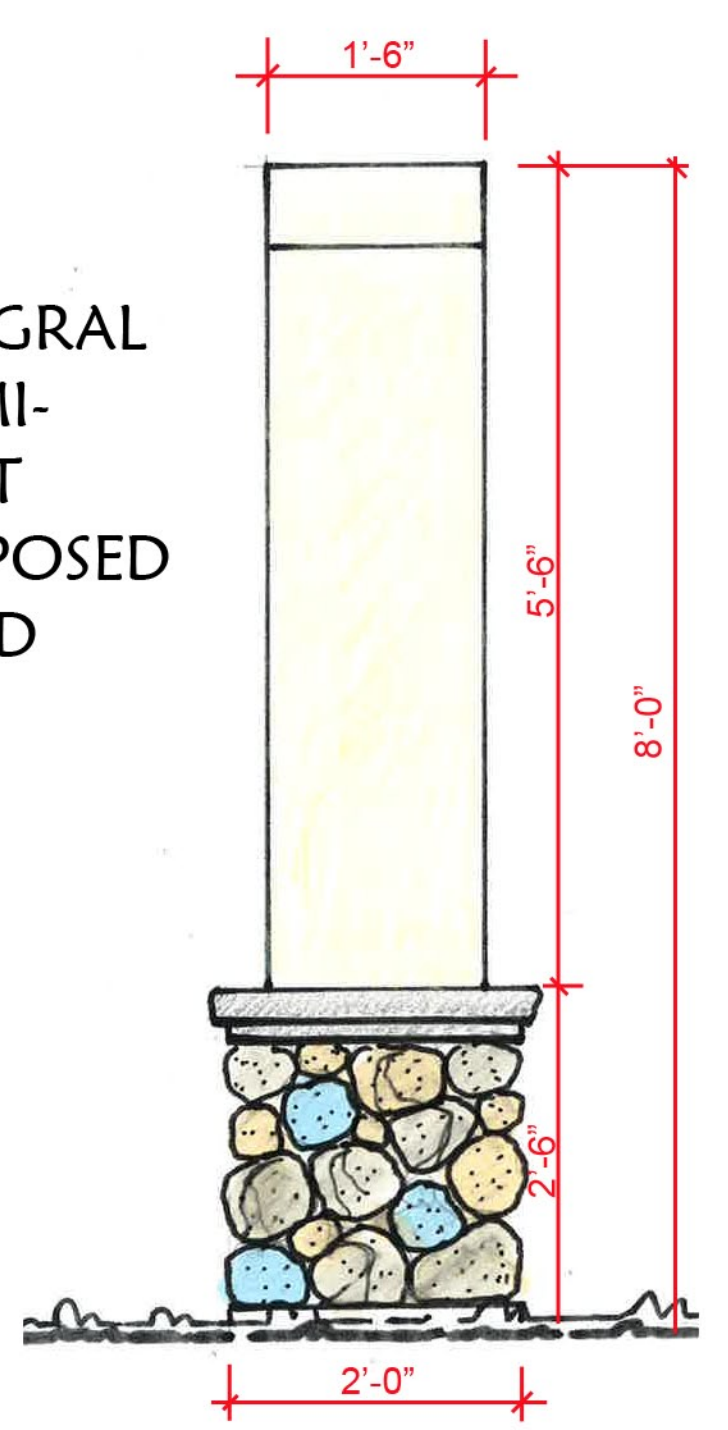
B. Front Elevation

DOUBLE SIDED, INTERNALLY ILLUMINATED SIGN WITH INTEGRAL EMC PANEL. FACES TO BE ALUMINUM ROUTED FOR LOGO/TEXT WITH PUSH-THRU ACRYLIC. EXPOSED METAL SURFACES TO BE COATED WITH POLYURETHANE

LIMESTONE COPING

SPLIT FACE COBBLESTONE MASONRY BASE

Sign 02



C. Side Elevation

Scale: 3/4" = 1'-0"



Orchard Valley Golf Monument Signs
Aurora, Illinois

ISSUE
City of Aurora Review

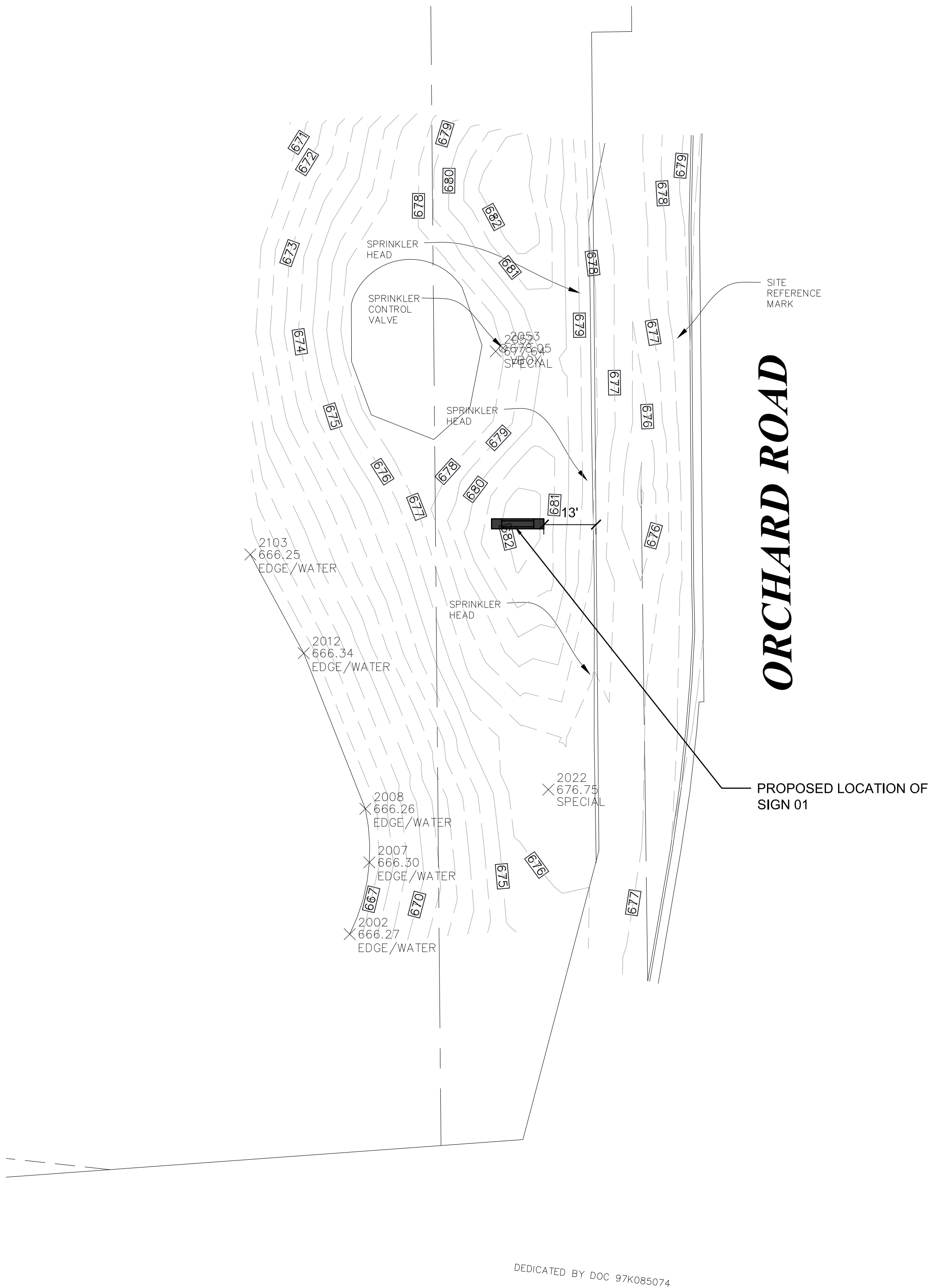
May 31, 2016

REVISION/RE-ISSUES	
REV.	COMMENT, DATE

SHEET TITLE
Elevations

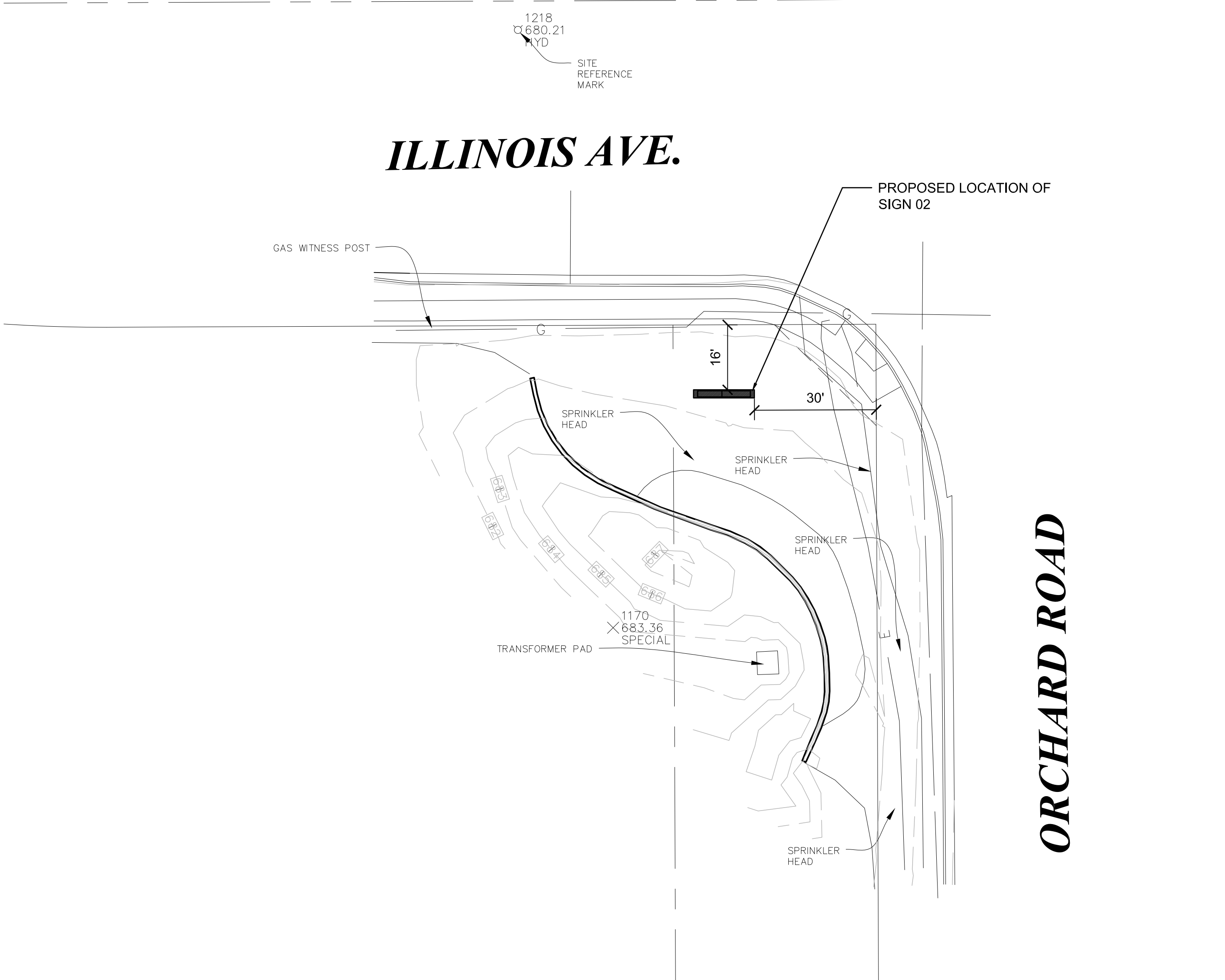
SHEET NO.
L01
DRAWN: NT
CHECKED: GS
OF 1 SHEETS

Ground Sign Location Plan



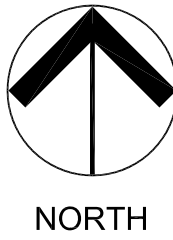
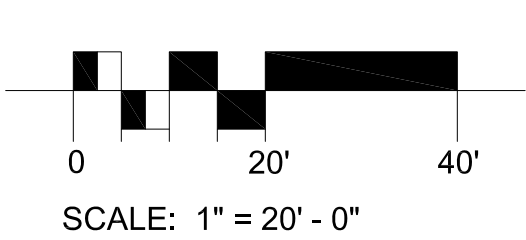
1 SIGN 01 LOCATION PLAN

Scale: 1:20



2 SIGN 02 LOCATION PLAN

Scale: 1:20



101 W. Illinois Avenue
Aurora, IL 60506
OFFICE: (630) 897-0516
FAX: (630) 897-2080

CALL J.U.I.E. 1-800-892-0123
to located underground utilities at least
48 Hours before start of construction.

The location and type of existing
underground utilities shown on the plan
may not be accurate. The Contractor is
responsible for determining the exact
location and type of underground utility
present so as to avoid damage.

LANDSCAPE ARCHITECT/
SITE PLAN DESIGNER:
FOX VALLEY PARK DISTRICT
GREG STEVENS, RLA, ASLA
REG.# 157.001001, EXPIRES 8-31-17



Orchard Valley Golf
Monument Signs
Aurora, Illinois

ISSUE
**City of Aurora
Review**

May 31, 2016

REVISION/RE-ISSUES		
REV.	COMMENT, DATE	

SHEET TITLE
**Ground Sign
Location Plan**

SHEET NO.
L02
DRAWN: NT
CHECKED: GS
OF SHEETS

A photograph of a large, curved stone wall sign. The wall is constructed from irregular, multi-colored stones. The text "ORCHARD VALLEY RESTAURANT" is mounted on the wall in large, gold-colored, three-dimensional block letters. Below this, in smaller gold letters, is the text "ONE BLOCK WEST TO RESTAURANT". In front of the wall is a flower bed filled with a variety of colorful flowers, including pink, purple, and white. The background features a grassy hill with several large, mature trees under a clear blue sky.

ORCHARD VALLEY RESTAURANT

ONE BLOCK WEST TO RESTAURANT

SIGN NO. 3

AREA= 51 SQ. FT.

HEIGHT= 3.5 FT.

SETBACK= 30 FT.

A large, low-profile sign for "Orchard Valley" is mounted on a wall made of irregular, stacked stones. The letters are large, light-colored, and three-dimensional. To the right of the text is a circular logo composed of many small, light-colored circles arranged in a grid. The sign is set against a backdrop of large, leafy trees. In the foreground, there is a lush green lawn and a flower bed with a variety of colorful flowers, including pink, purple, and white.

ORCHARD VALLEY

SIGN NO. 4

AREA= 87 SQ. FT.

HEIGHT= 3.0 FT.

SETBACK= ± 25 FT.



SIGN NO. 5

78 SQ. FT.

HEIGHT= 3.75 FT.

SETBACK= ± 85 FT.



SIGN NO. 6

AREA= 29 SQ. FT.

HEIGHT= 2.5 FT.

SETBACK= ± 70 FT.