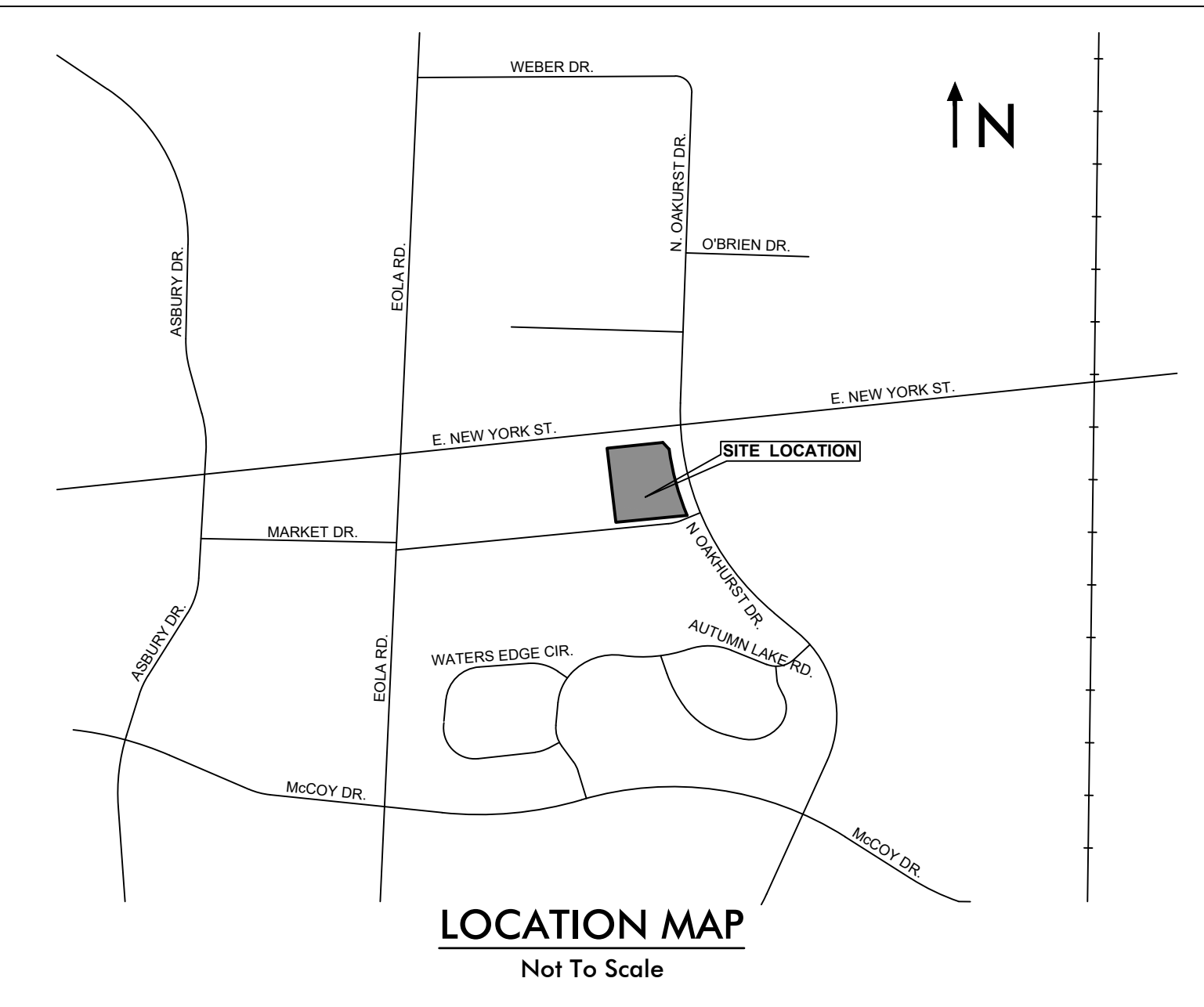
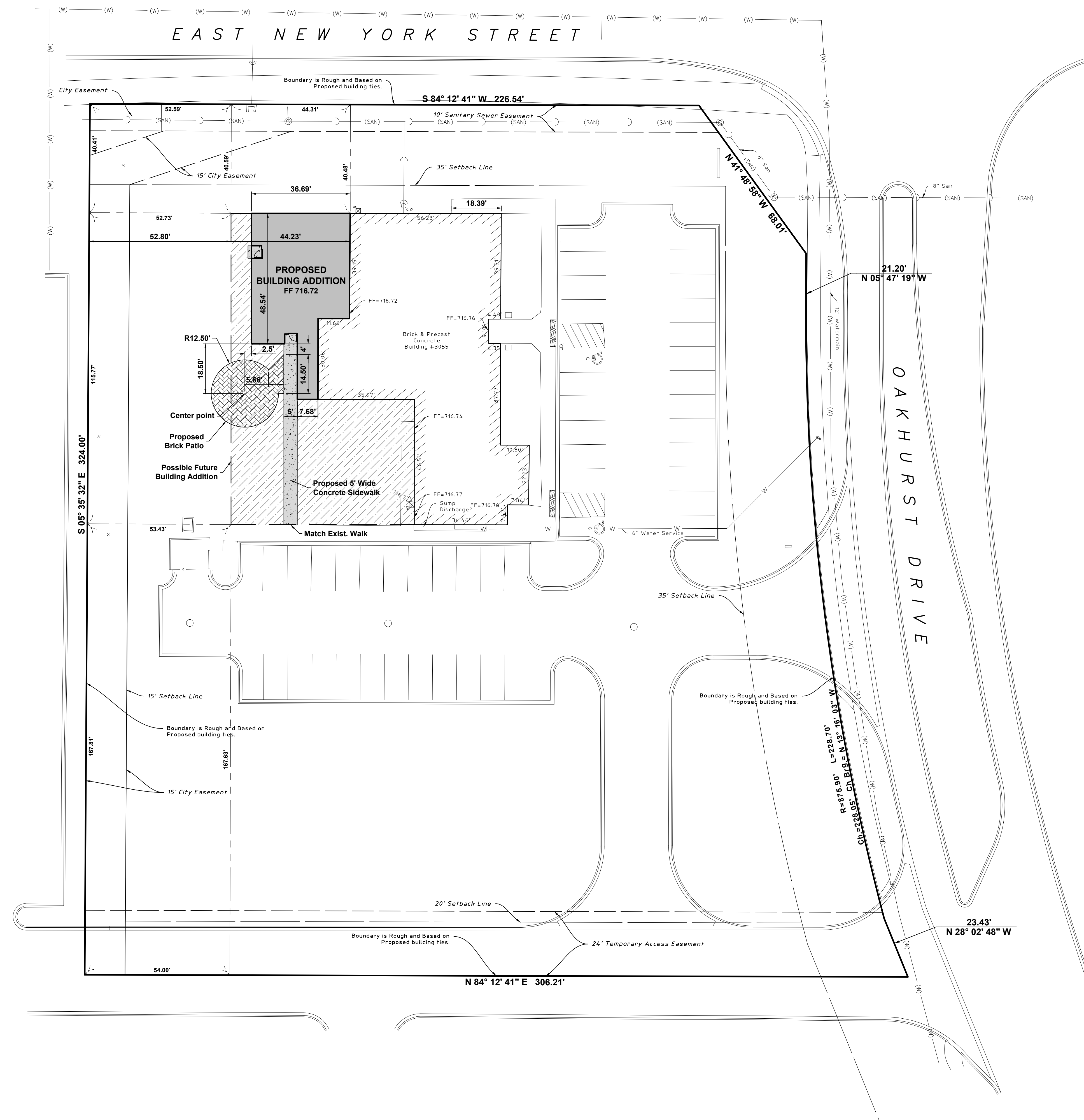


Final Plan Revision for PDA Resubdivision of Lot 2 in Fox Valley East



LEGEND

- CONCRETE SIDEWALK**
 - 5" Portland Cement Concrete (Class S1)
 - 3" Aggregate Base Course, CA-6, Crushed
- BRICK PATIO**
 - See Architectural Plans
- BUILDING ADDITION**
- POSSIBLE FUTURE BUILDING ADDITION**

Development Data Table: Final Plan					
Description	Value	Unit	Description	Value	Unit
a) Tax/Parcel Identification Number(s) (PINs): 07-20-302-080			j) Total Number of Residential Dwelling Units	0	units
			i. Gross Density	0.00	du/acre
b) Proposed land use(s): Medical Clinic Building Addition			k) Number of Single Family Dwelling Units	0	units
			i. Gross Density	0.00	du/acre
c) Total Property Size	2.02940771	Acres	iii. Unit Square Footage (average)	0	square feet
	88401	Square feet	iv. Bedroom Mix	0%	% 1 bdr
d) Total Lot Coverage (buildings and pavement)	49435	Square feet		0%	% 2 bdr
	56%	Percent		20%	% 3 bdr
e) Open space / landscaping	38966	Square feet		80%	% 4 bdr
	44%	Percent	v. Number of Single Family Corner Lots	0	units
f) Land to be dedicated to the School District	0	Acres	l) Number of Single Family Attached Dwelling Units	0	units
g) Land to be dedicated to the Park District	0	Acres	i. Gross Density	0.00	du/acre
h) Number of parking spaces provided (individually accessible)	49	spaces	iii. Unit Square Footage (average)	0	square feet
			iv. Bedroom Mix	0%	% 1 bdr
i. surface parking lot	49	spaces		90%	% 2 bdr
perpendicular	47	spaces		10%	% 3 bdr
parallel	0	spaces		0%	% 4 bdr
angled	0	spaces	m) Number of Multifamily Dwelling Units	0	units
handicapped	2	spaces	i. Gross Density	0.00	du/acre
ii. enclosed	0	spaces			
iii. bike	0	racks	iii. Unit Square Footage (average)	0	square feet
j) Number of buildings	1		iv. Bedroom Mix	0%	Efficiency
i. Number of stories	1	stories		40%	% 1 bdr
ii. Building Square Footage (typical)	5863	square feet		50%	% 2 bdr
iii. Square Footage of retail floor area	0	square feet		10%	% 3 bdr
iv. First Floor Building Square Footage (typical)	5863	square feet			

HAEGER ENGINEERING
consulting engineers • land surveyors
100 East State Parkway, Schaumburg, IL 60173 • Tel: 847.394.6600 Fax: 847.394.6608
Illinois Professional Design Firm License No. 184-003132
www.haegerengineering.com

**FINAL PLAN REVISION LOT 1 IN PDA
RESUB. OF LOT 2 IN FOX VALLEY EAST**

**WATERLEAF WOMEN'S CENTER
SITE IMPROVEMENT PLANS**
AURORA, ILLINOIS

Project Manager: K M L
Engineer: K M L
Date: 04-02-2024
Project No. 24-001
Sheet 1