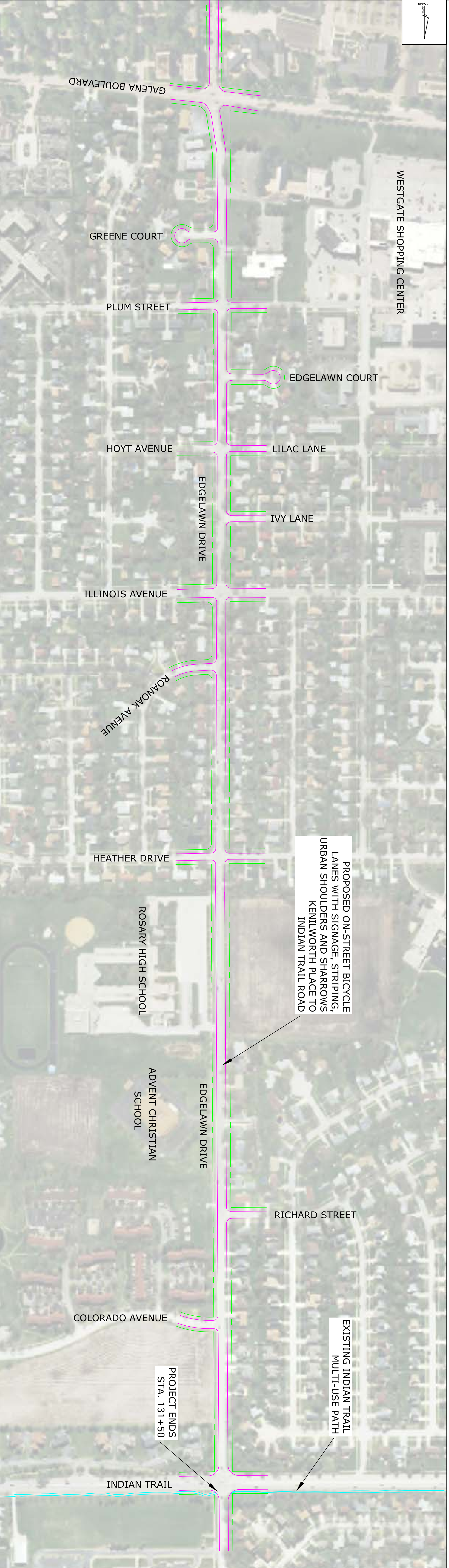
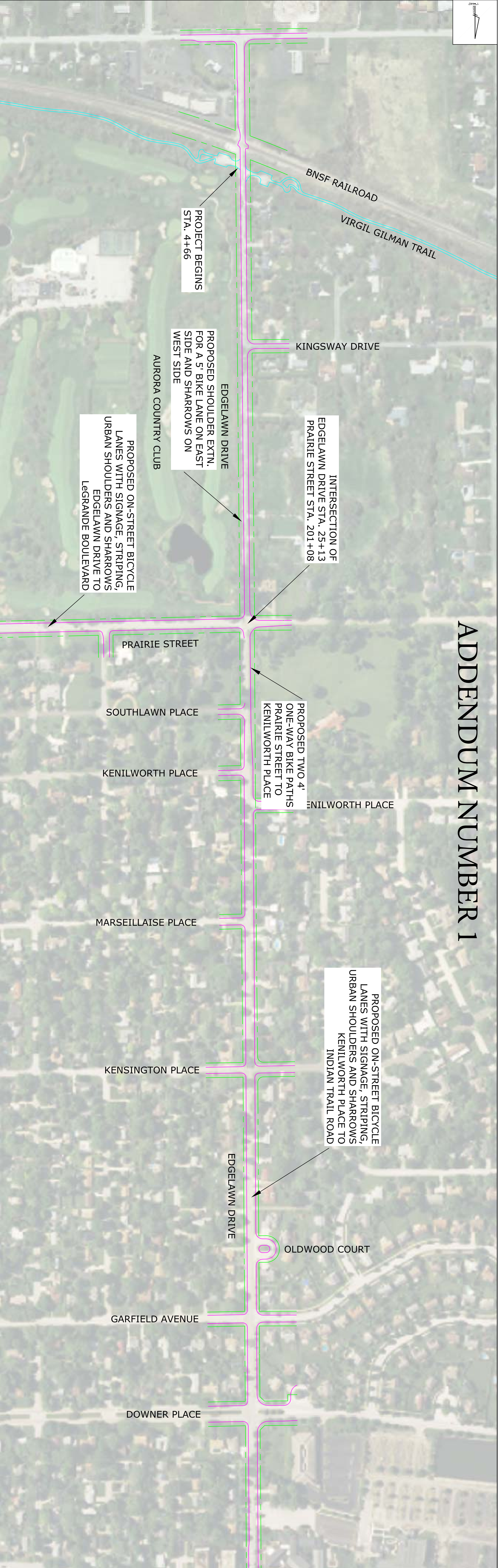
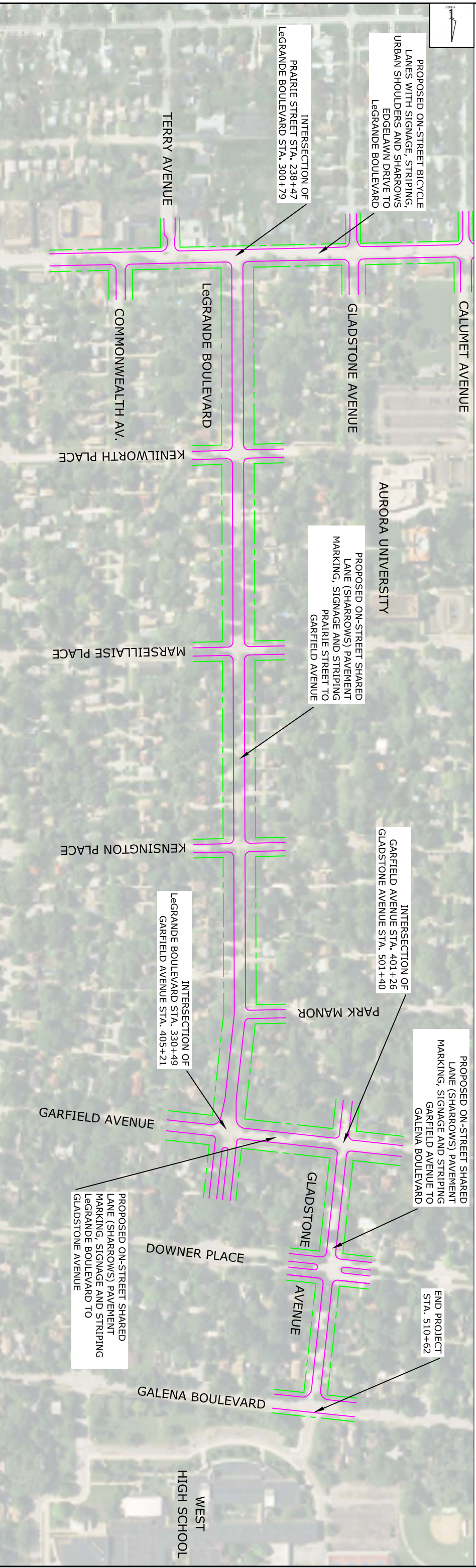


# ADDENDUM NUMBER 1



		DEPT. OF PUBLIC WORKS ENGINEERING DIVISION AURORA, IL 60507 630-585-3239 FAX <a href="https://www.aurora-il.org/">https://www.aurora-il.org/</a>	
USER NAME	DESIGNED	RRA	REVISED
PILOT SCALE	DRAWN	JJ	REVISED
PILOT DATE	CHECKED	RBG	REVISED
	DATE	10/2018	REVISED
STATE OF ILLINOIS DEPARTMENT OF TRANSPORTATION			
SCALE	1"=330'	SHEET NO.	1 OF 2 SHEETS
EDGELAWN DRIVE MULTI-USE PATH LOCATION MAP			
STA.		TO STA.	
F.A. RTE.	SECTION	COUNTY	TOTAL SHEET NO.
N/A	1.6-00312-00-BT	KANE	2
FED. ROAD DIST. NO. 1	ILLINOIS		1



		USER NAME DESIGNED RRA DRAWN JU CHECKED RBG DATE 10/2018		REVISIONS REVISED REVISED REVISED	
PLOT SCALE PLOT DATE		DESIGNED RRA DRAWN JU CHECKED RBG DATE 10/2018		REVISIONS REVISED REVISED REVISED	
STATE OF ILLINOIS DEPARTMENT OF TRANSPORTATION				SCALE 1"=330' SHEET NO. 2 OF 2 SHEETS STA. TO STA.	
EDGELAWN DRIVE MULTI-USE PATH LOCATION MAP		SECTION COUNTY KANE		TOTAL SHEET NO. 2	
WEST HIGH SCHOOL		COUNTY KANE		TOTAL SHEET NO. 2	