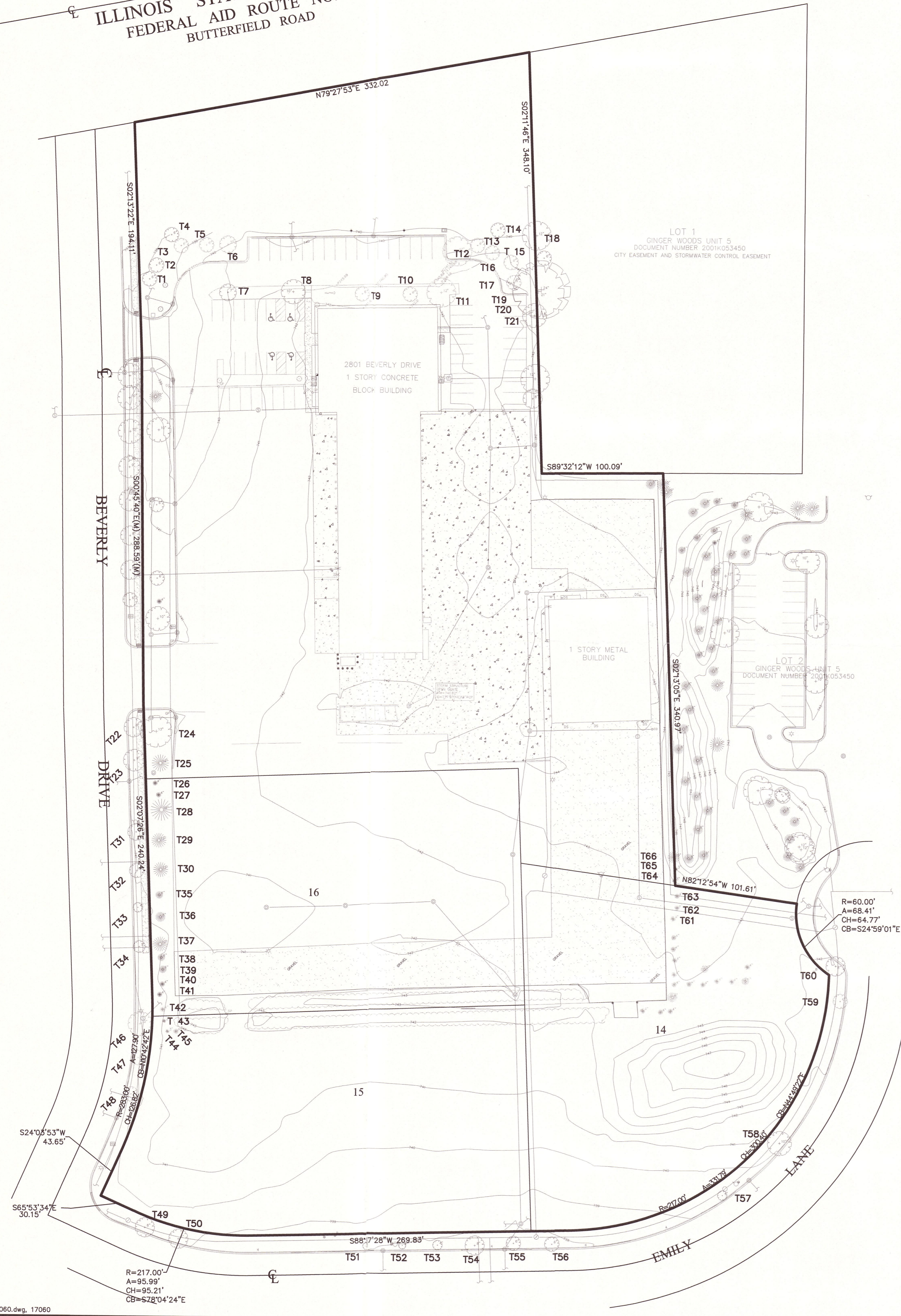
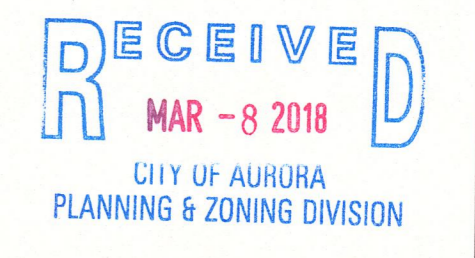


ILLINOIS STATE ROUTE 56
FEDERAL AID ROUTE NO. 131
BUTTERFIELD ROAD

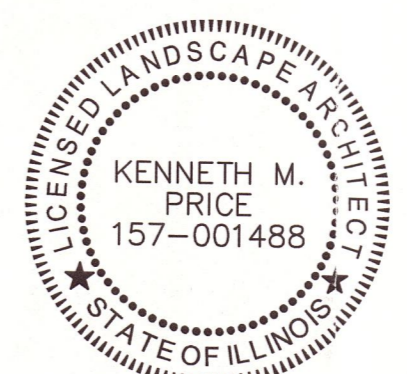


TREE ID	BOTANICAL NAME	COMMON NAME	DBH
1	Malus ssp.	Flowering Crabapple	6"
2	Malus ssp.	Flowering Crabapple	6"
3	Malus ssp.	Flowering Crabapple	6"
4	Malus ssp.	Flowering Crabapple	6"
5	Malus ssp.	Flowering Crabapple	6"
6	Malus ssp.	Flowering Crabapple	7"
7	Malus ssp.	Flowering Crabapple	7"
8	Pyrus calleryana	Flowering Pear	10"
9	Malus ssp.	Flowering Crabapple	6"
10	Malus ssp.	Flowering Crabapple	6"
11	Pyrus calleryana	Flowering Pear	12"
12	Malus ssp.	Flowering Crabapple	12"
13	Malus ssp.	Flowering Crabapple	6"
14	Malus ssp.	Flowering Crabapple	6"
15	Malus ssp.	Flowering Crabapple	6"
16	Malus ssp.	Flowering Crabapple	6"
17	Malus ssp.	Flowering Crabapple	6"
18	Acer saccharum	Sugar Maple	12"
19	Fraxinus pennsylvanica	Green Ash	24"
20	Fraxinus pennsylvanica	Green Ash	21"
21	Tilia americana	American Linden	10"
22	Acer saccharum	Sugar Maple	8"
23	Acer saccharum	Sugar Maple	9"
24	Pyrus calleryana	Flowering Pear	13"
25	Picea abies	Norway Spruce	14"
26	Picea pungens	Colorado Spruce	4"
27	Picea abies	Norway Spruce	4"
28	Pinus nigra	Austrian Pine	18"
29	Pinus nigra	Austrian Pine	12"
30	Pinus nigra	Austrian Pine	12"
31	Tilia americana	American Linden	7"
32	Tilia americana	American Linden	6"
33	Acer rubrum	Red Maple	4"
34	Acer rubrum	Red Maple	4"
35	Picea abies	Norway Spruce	8"
36	Pinus strobus	White Pine	8"
37	Pinus nigra	Austrian Pine	12"
38	Picea abies	Norway Spruce	6"
39	Picea abies	Norway Spruce	6"
40	Picea abies	Norway Spruce	4"
41	Picea abies	Norway Spruce	4"
42	Picea pungens	Colorado Spruce	4"
43	Picea pungens 'glauca'	Colorado Blue Spruce	3"
44	Picea pungens	Colorado Spruce	3"
45	Picea pungens	Colorado Spruce	4"
46	Gleditsia triacanthos	Honeylocust Tree	10"
47	Gleditsia triacanthos	Honeylocust Tree	6"
48	Gleditsia triacanthos	Honeylocust Tree	4"
49	Gleditsia triacanthos	Honeylocust Tree	8"
50	Gleditsia triacanthos	Honeylocust Tree	8"
51	Acer rubrum	Red Maple	3"
52	Acer rubrum	Red Maple	3"
53	Acer rubrum	Red Maple	4"
54	Gleditsia triacanthos	Honeylocust Tree	8"
55	Gleditsia triacanthos	Honeylocust Tree	6"
56	Gleditsia triacanthos	Honeylocust Tree	6"
57	Acer rubrum	Red Maple	4"
58	Gleditsia triacanthos	Honeylocust Tree	10"
59	Tilia americana	American Linden	6"
60	Tilia americana	American Linden	8"
61	Pinus nigra	Austrian Pine	4"
62	Pinus nigra	Austrian Pine	4"
63	Pinus nigra	Austrian Pine	4"
64	Picea pungens	Colorado Spruce	3"
65	Picea pungens	Colorado Spruce	3"
66	Pinus nigra	Austrian Pine	10"

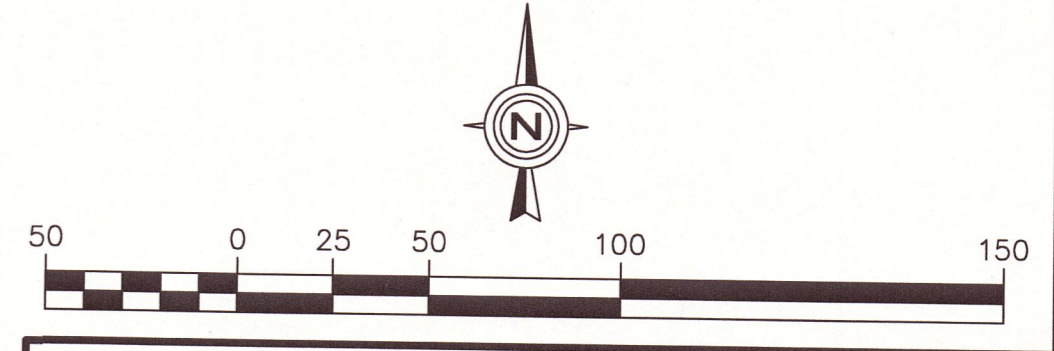
GENERAL NOTES:
1. THESE PLANS ARE BASED ON THE BOUNDARY AND TOPOGRAPHIC SURVEY, PROJECT #17.0356 DATED 11/15/17 PREPARED BY: COMPASS SURVEYING LTD 2631 GINGER WOODS PARKWAY, STE 100, AURORA, IL 60502 (630) 820-9100
2. PRIOR TO CONSTRUCTION, CONTRACTOR TO CONTACT THE DESIGN ENGINEER AND ARCHITECT TO VERIFY THAT THEY ARE WORKING FROM THE MOST CURRENT SET OF PLANS AND SPECIFICATIONS.



DATE	
REVISIONS	
NO.	
Prepared For:	Keeley Construction, Inc. 245 East Sidney Court Villa Park, IL 60181
	VERMEER MIDWEST - AURORA, IL 2801 Beverly Court Aurora, Illinois 60502
Prepared By:	 2631 Ginger Woods Parkway, Suite 100, Aurora, IL 60502 phone 630-375-1600 fax 630-298-9800 www.watermark-engineering.com
CHECKED BY:	B. PERRY
DESIGN BY:	B. PERRY
DRAWN BY:	DNORLIK
DATE:	FEB. 8, 2018
SCALE:	1" = 50'
PROJECT NO.:	17-060



TREE PRESERVATION AND REMOVALS PLAN PREPARED BY KENNETH M. PRICE, RLA



TREE SURVEY