

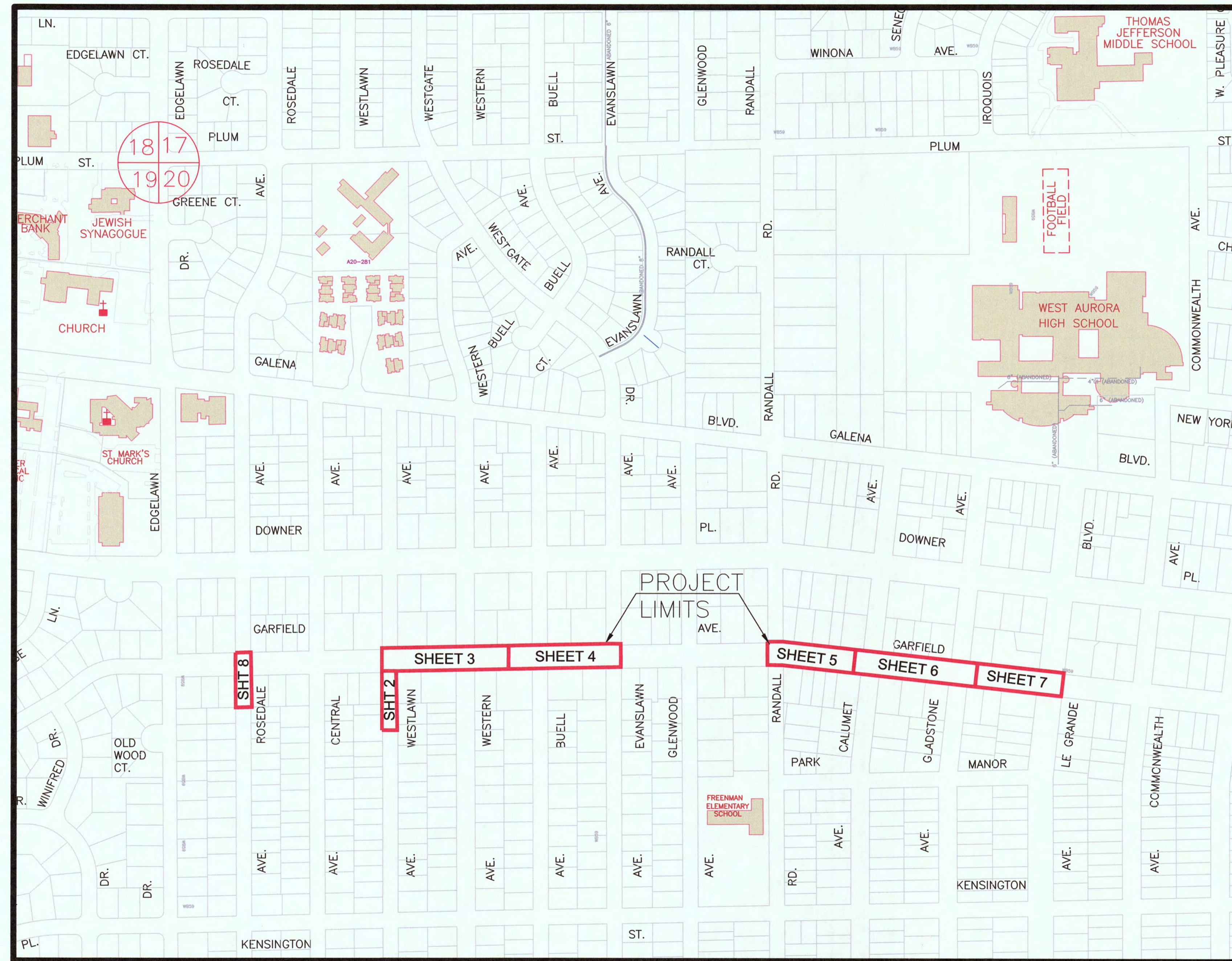
# GARFIELD AVENUE SEWER SEPARATION

APRIL, 2019

GENERALLY LOCATED: N 1/2 SECTION 20,  
T38N, R8E, AURORA TOWNSHIP

### LEGEND

EXISTING	PROPOSED
SANITARY SEWER	12" PVC
STORM SEWER	12" STORM
WATERMAIN	8" WM
GAS LINE	
TELEPHONE LINE	
ELECTRIC LINE	
FENCE	
INDEX CONTOUR	
INTERMEDIATE CONTOUR	
EDGE OF PAVEMENT	
CURB AND GUTTER	
RIGHT-OF-WAY	
SANITARY MANHOLE	
SANITARY CLEANOUT	
STORM MANHOLE	
CATCH BASIN	
INLET	
FLARED END SECTION	
FIRE HYDRANT	
VALVE VAULT	
VALVE BOX	
STREET LIGHT	
POWER POLE	
STREET SIGN	
ELECTRIC BOX	
TELEPHONE BOX	
TELEPHONE MANHOLE	
B-BOX	
GAS VALVE	
TRAFFIC HANDHOLE	
ELECTRIC HANDHOLE	
MAILBOX	
PARKING METER	
TREE W/ DIAMETER	
UTILITY CROSSING	
SPOT ELEVATION	
TOP OF CURB ELEVATION	
TOP OF FOUNDATION ELEVATION	
GUTTER ELEVATION	
PAVEMENT ELEVATION	
FORCE MAIN	
UNDERDRAIN	
OVERHEAD LINE	
CABLE TV LINE	
HIGH WATER LEVEL	
NORMAL WATER LEVEL	
PAVEMENT FLOW DIRECTION	
EXPLORATORY EXCAVATION LOCATION	
ADDRESS	
SANITARY MANHOLE REHABILITATION NUMBER	
SOIL BORING LOCATION WITH IDENTIFICATION NUMBER & ELEVATION	
STRUCTURE TO BE REMOVED	
PLUG EXISTING PIPE	



## INDEX OF SHEETS

- 1 COVER SHEET
- 2-8 PLAN AND PROFILE
- 9-14 STANDARD DETAIL SHEETS

PLANS PREPARED BY:

**CITY OF AURORA**

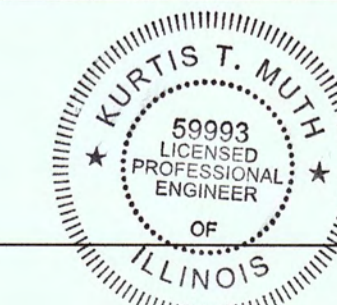
DEPARTMENT OF PUBLIC WORKS, DIVISION OF ENGINEERING

44 E. DOWNER PLACE - AURORA, IL

PHONE: 630-256-3200 FAX: 630-256-3229

REVISIONS:

DESIGNED BY: KTM	DRAWN BY: KTM	CHECKED BY: JMB	APPROVED BY: JMB	HORIZ. SCALE: N/A	DATE: APRIL 2019
				VERT. SCALE: N/A	



1667201  
ILLINOIS REGISTERED PROFESSIONAL

ENGINEER No. 062-59993  
LICENSE EXPIRES NOVEMBER 30, 2019

4/27/19  
DATE