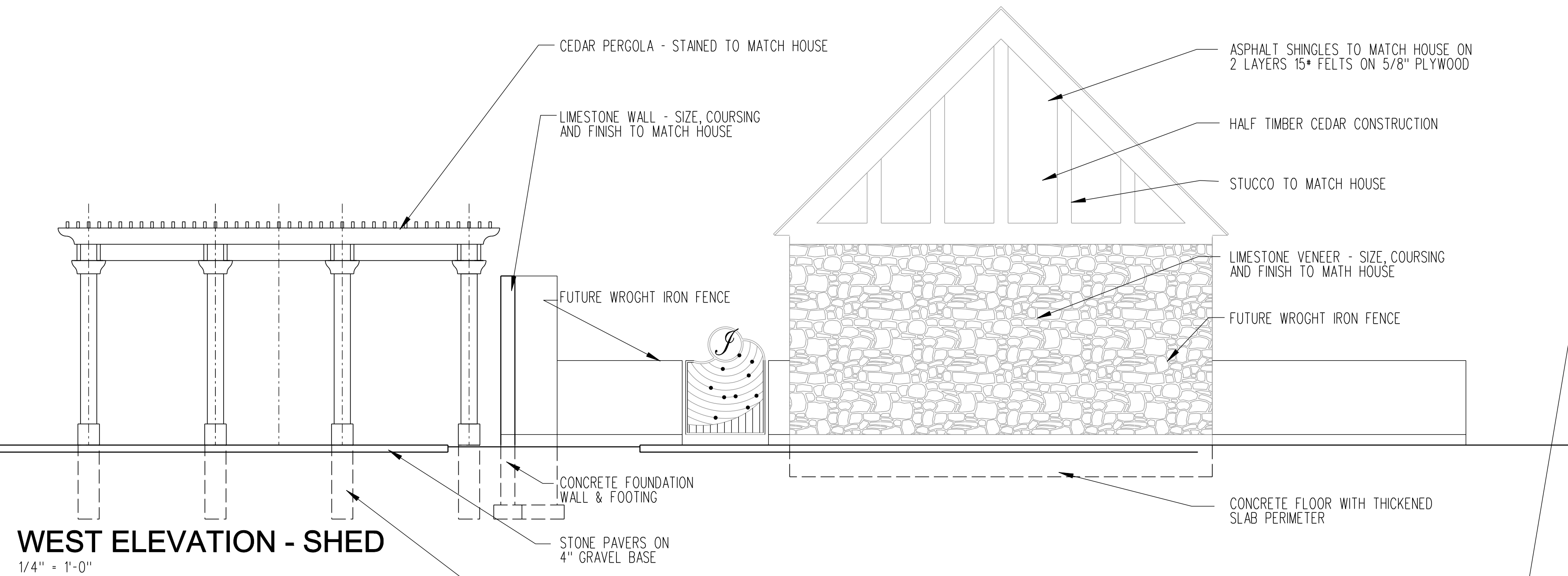
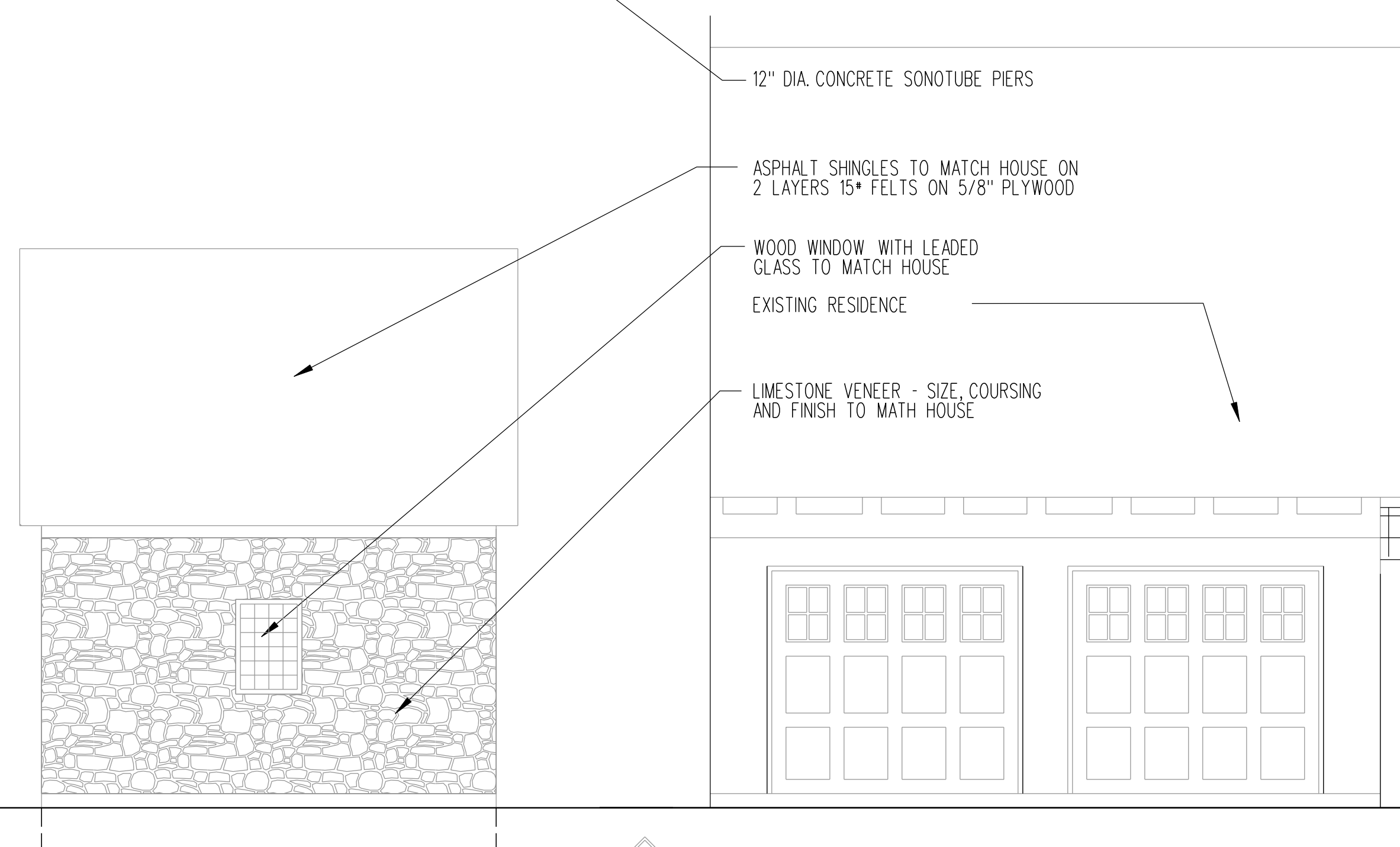


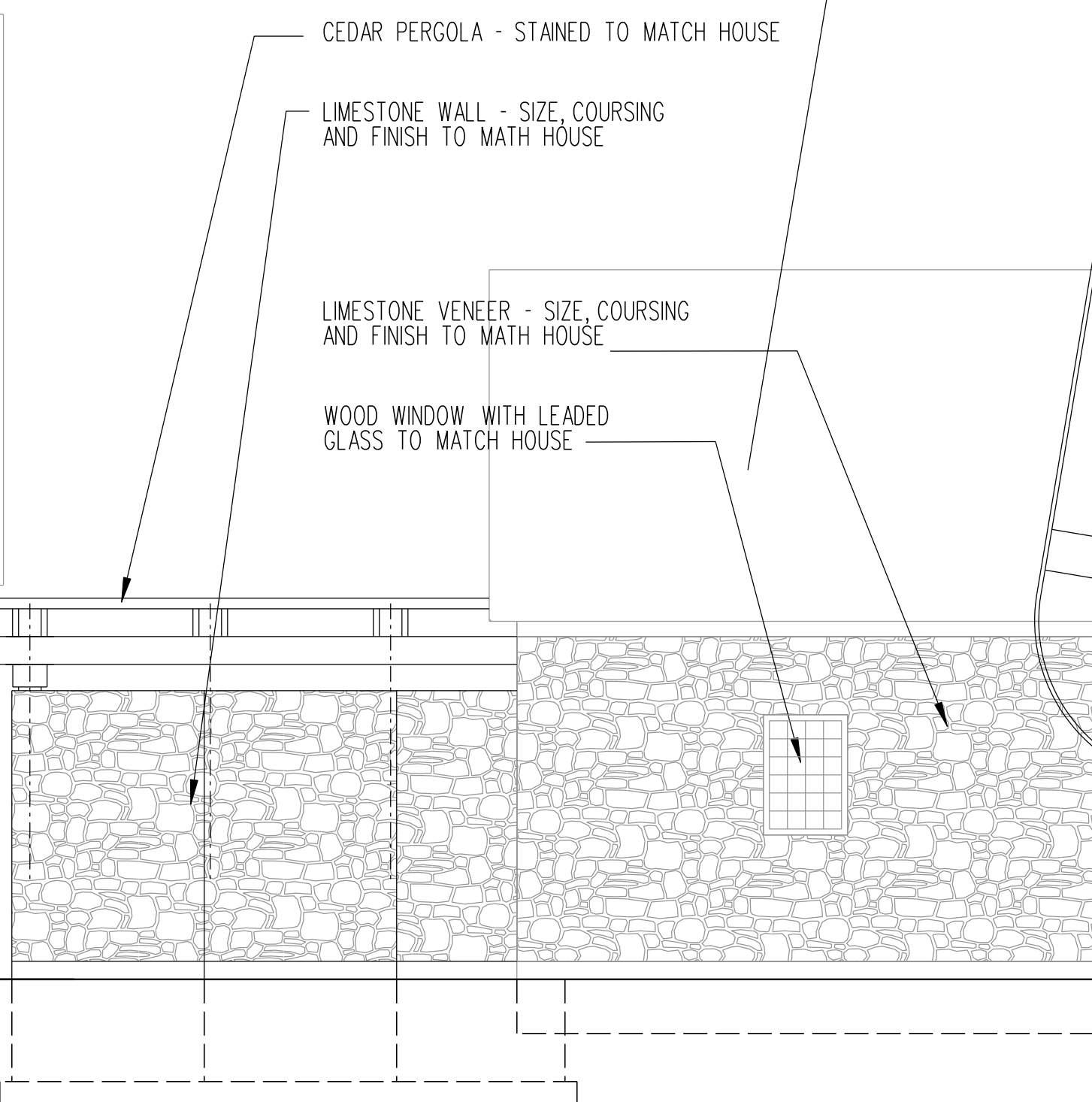
WEST ELEVATION - SHED
1/4" = 1'-0"



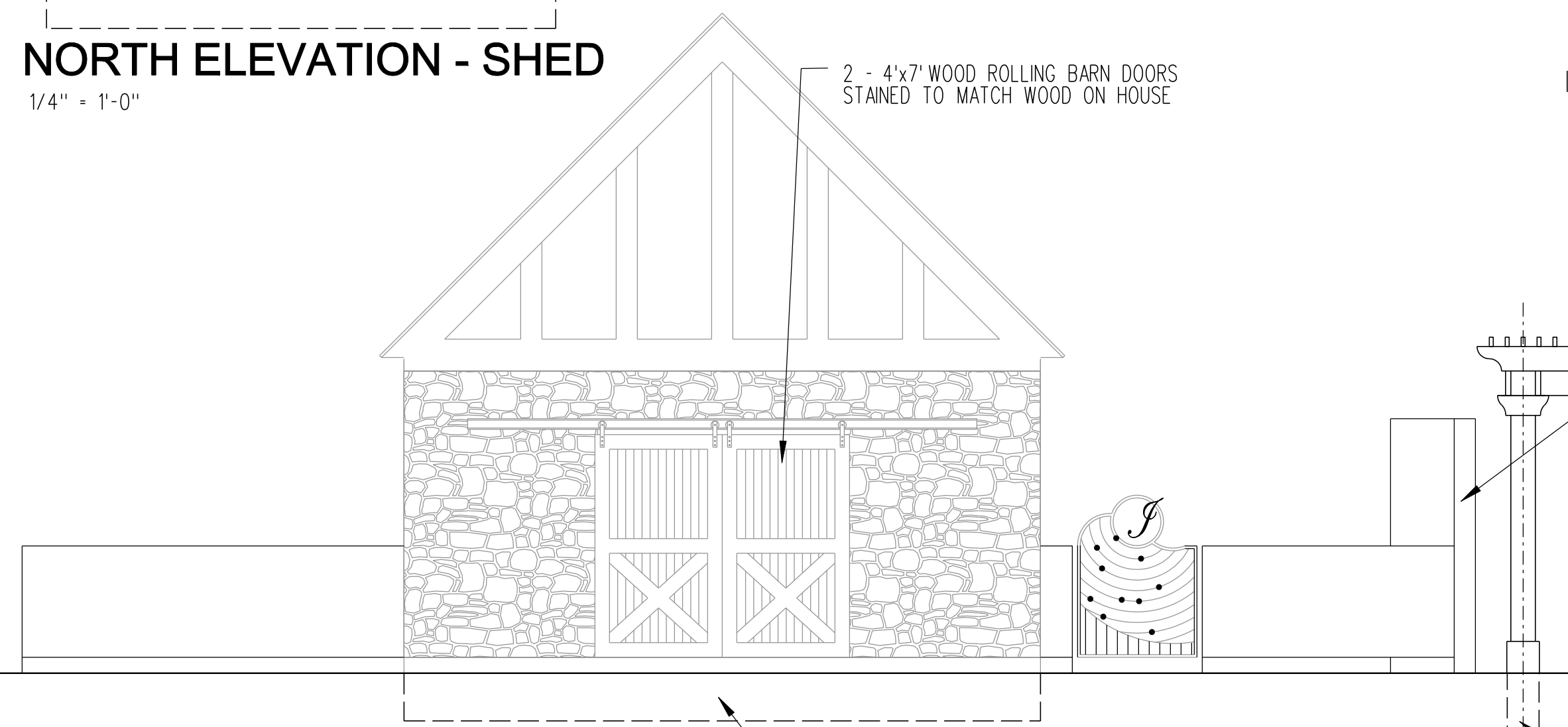
NORTH ELEVATION - SHED
1/4" = 1'-0"



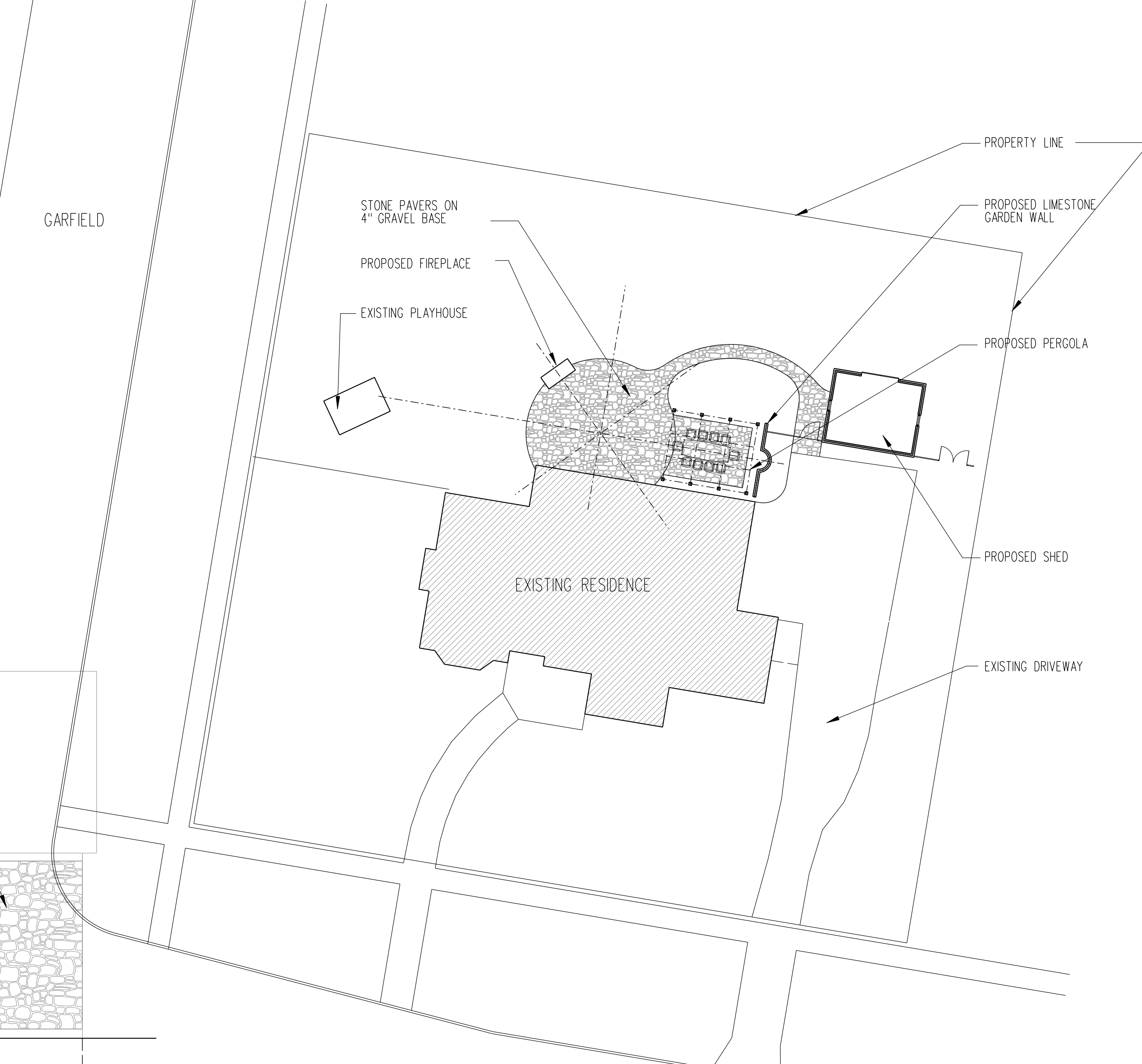
SOUTH ELEVATION - SHED
1/4" = 1'-0"



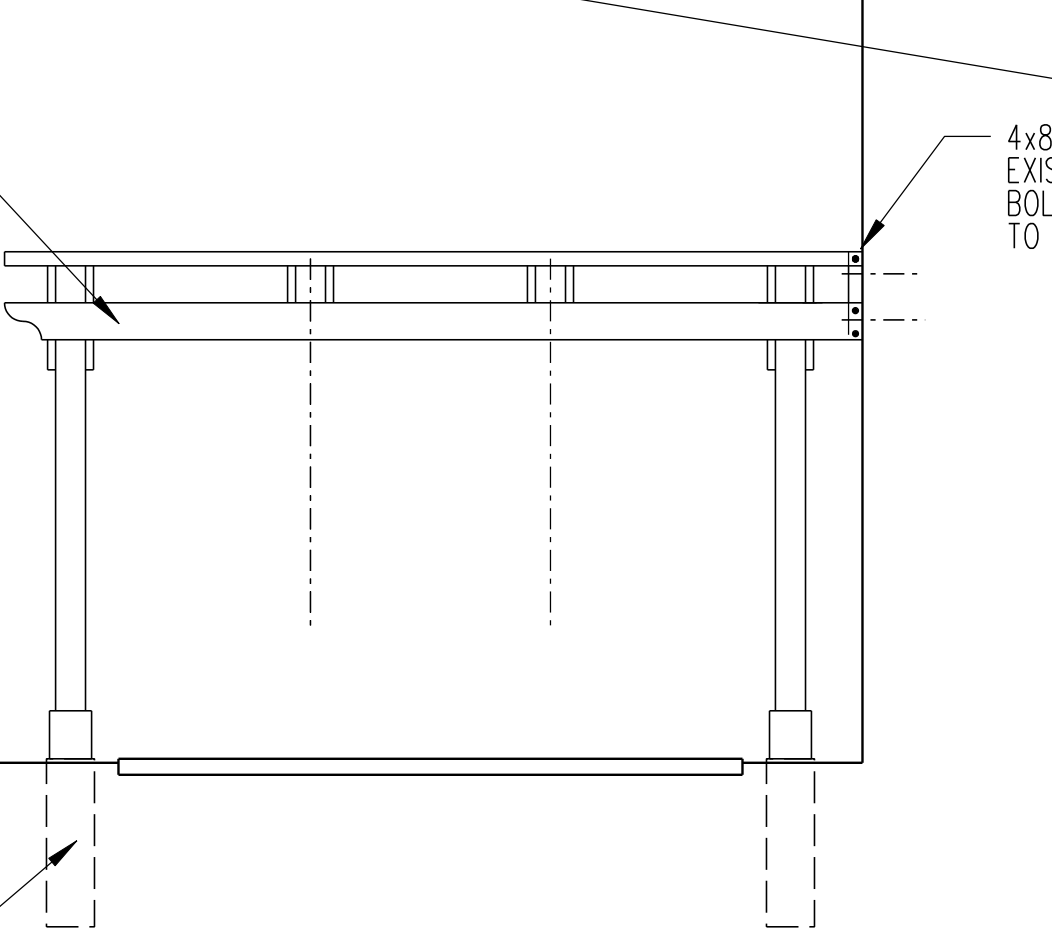
EAST ELEVATION - SHED
1/4" = 1'-0"



SITE PLAN
1/16" = 1'-0"

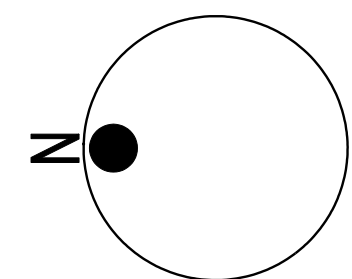


NORTH ELEVATION - PERGOLA
1/4" = 1'-0"



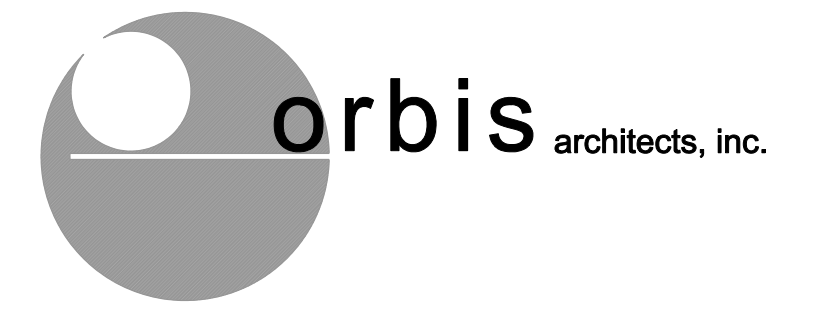
STUCCO NOTE:
3 LAYERS OF STUCCO (FINISH TO MATCH HOUSE)
W/ CASING BEAD TOP, SIDE, BOTTOM OR RAKE
EDGES, INSIDE CORNERS AND TRANSITION TO
OTHER MATERIALS, ON SELF-FURRING
GALVANIZED MESH STUCCO WIRE OR
GALVANIZED EXPANDED LATH ON
2 LAYERS OF WATERPROOF BACKING PAPER
OR FELT HAVING A PERMEANCE OF AT LEAST
5 PERMS, ON 3/4" PLYWOOD SHEATING, 2x4
STUDS AT 16" O.C., R-19 BATT INSULATION
AND APPROVED VAPOR BARRIER ON WARM
SIDE.

4x8 CEDAR BLOCK THROUGH-BOLTED TO
EXISTING WALL AT EA COLUMN LINE -
BOLT HORIZONTAL PERGOLA MEMBERS
TO 4x8 BLOCK



SITE PLAN AND EXTERIOR ELEVATIONS

SITE PLAN AND EXTERIOR ELEVATIONS



JURIGA RESIDENCE - PERGOLA & SHED

AURORA
PROJ. NO. 00715

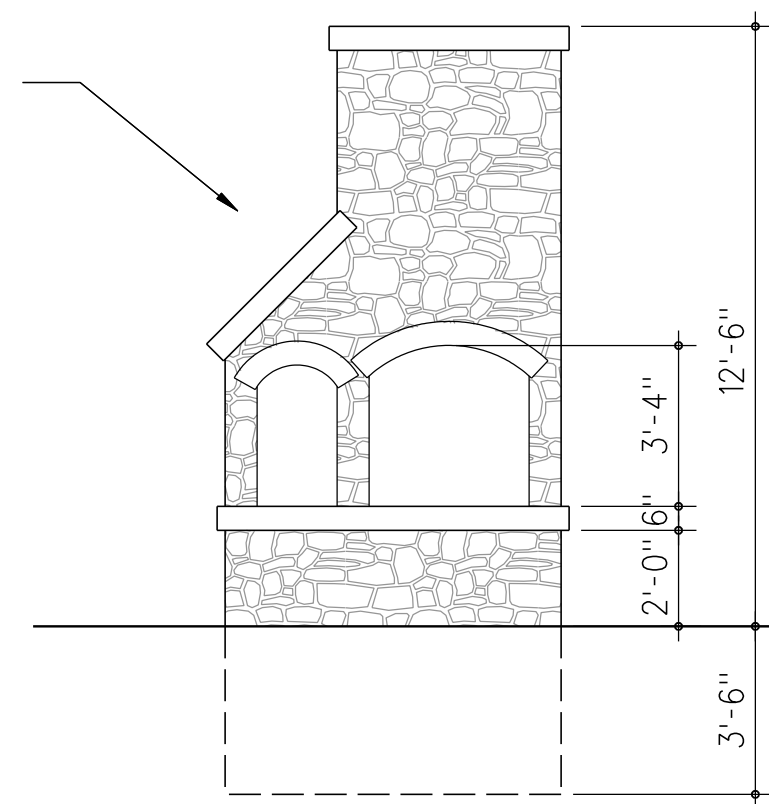
06.06.16
ORBIS ARCHITECTS, INC. 432 E. 14TH STREET, LOCKPORT, ILLINOIS
815-673-9400
COPYRIGHT © 2016 ORBIS ARCHITECTS, INC.

ILLINOIS

A-1

FAX 815-588-0987

FIREPLACE DESIGN BY MASONRY CONTRACTOR



**FIREPLACE ELEVATION
VIEW FROM PATIO**
1/4" = 1'-0"

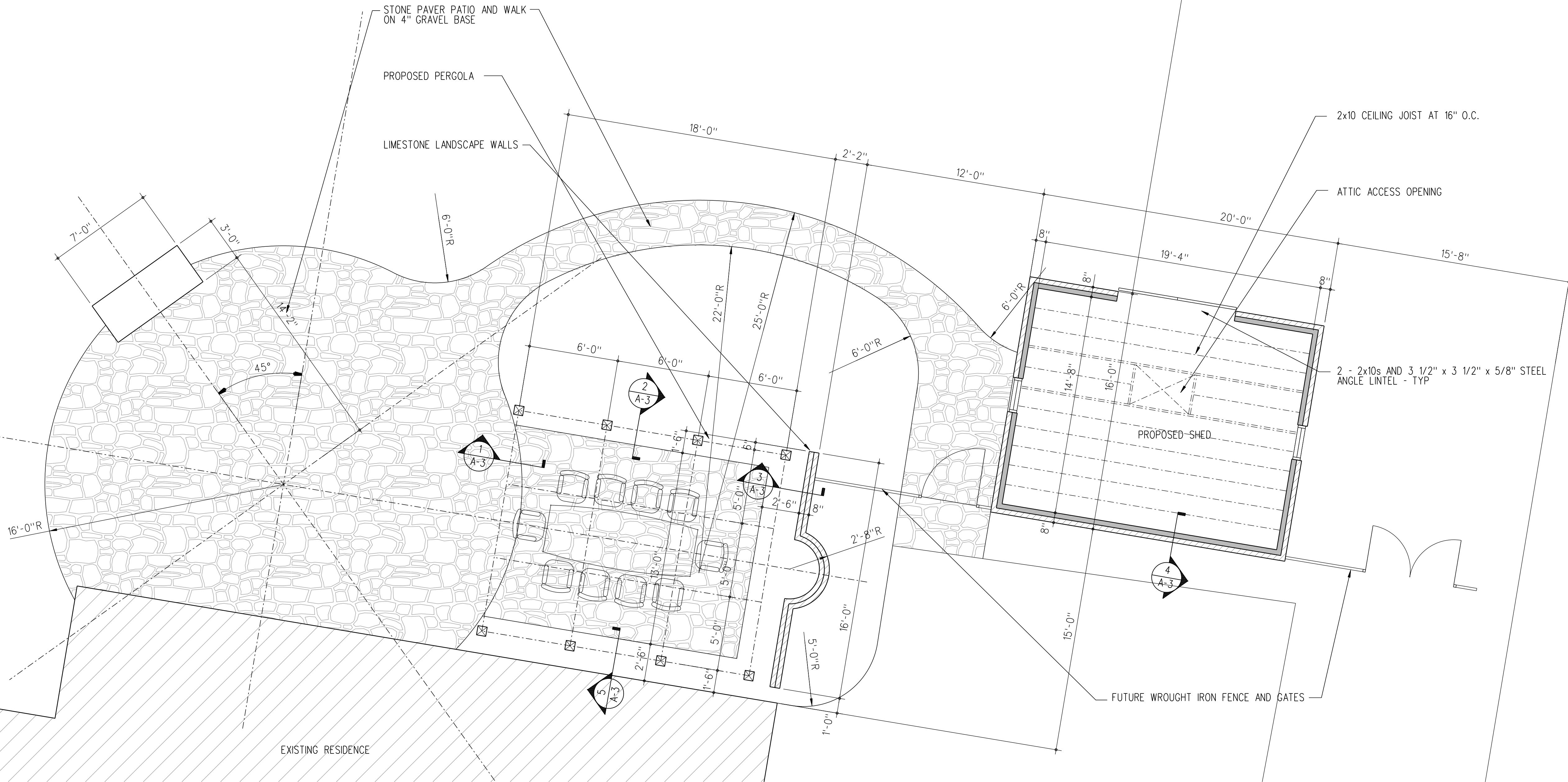
EXISTING PLAY HOUSE

PROPOSED FIRE PLACE

STONE PAVER PATIO AND WALK
ON 4" GRAVEL BASE

PROPOSED PERGOLA

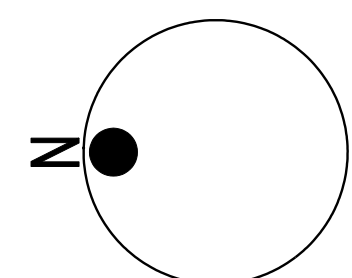
LIMESTONE LANDSCAPE WALLS



FLOOR PLAN



**JURIGA RESIDENCE -
PERGOLA AND SHED**



FLOOR PLAN

1/4" = 1'-0"

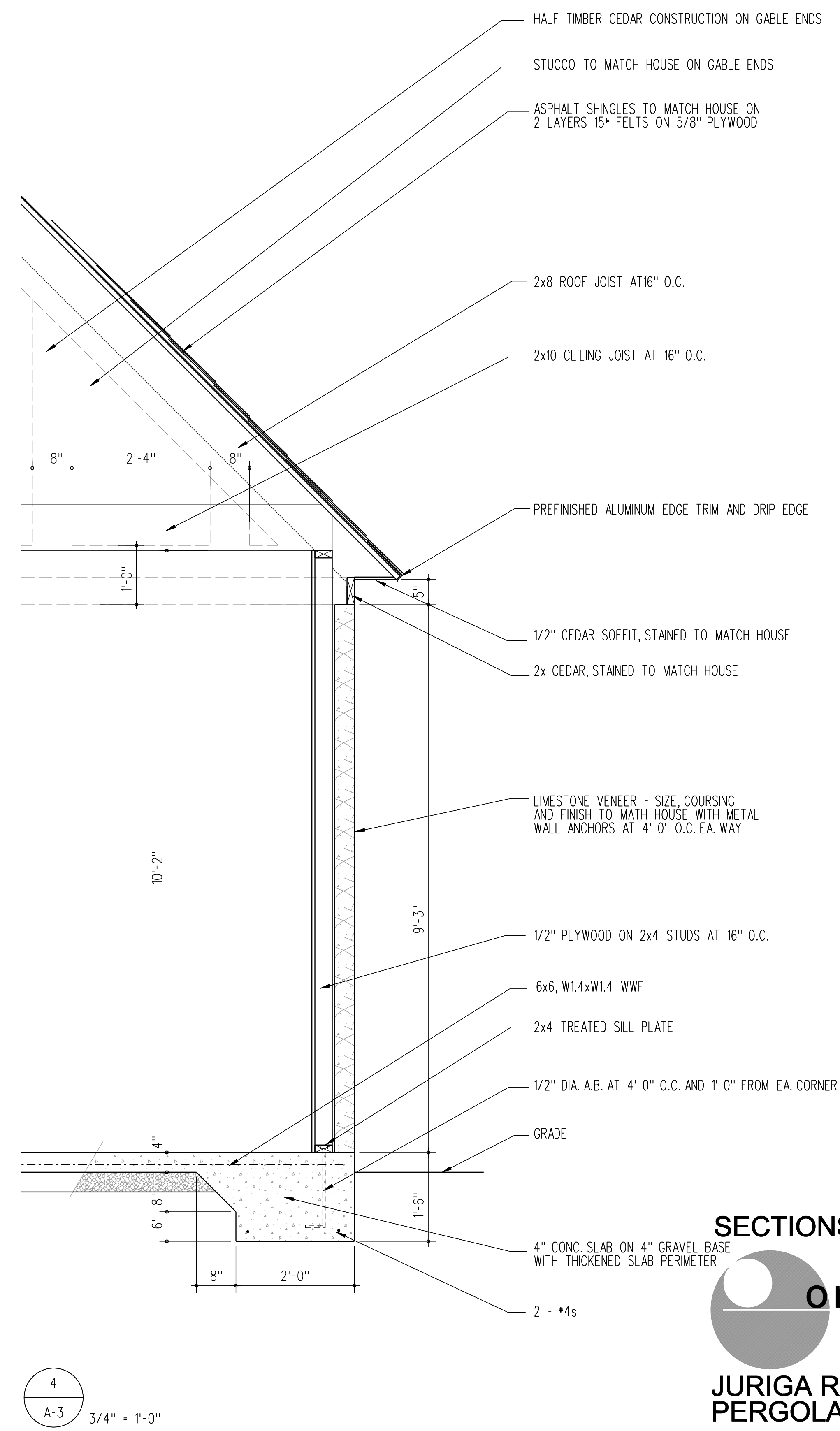
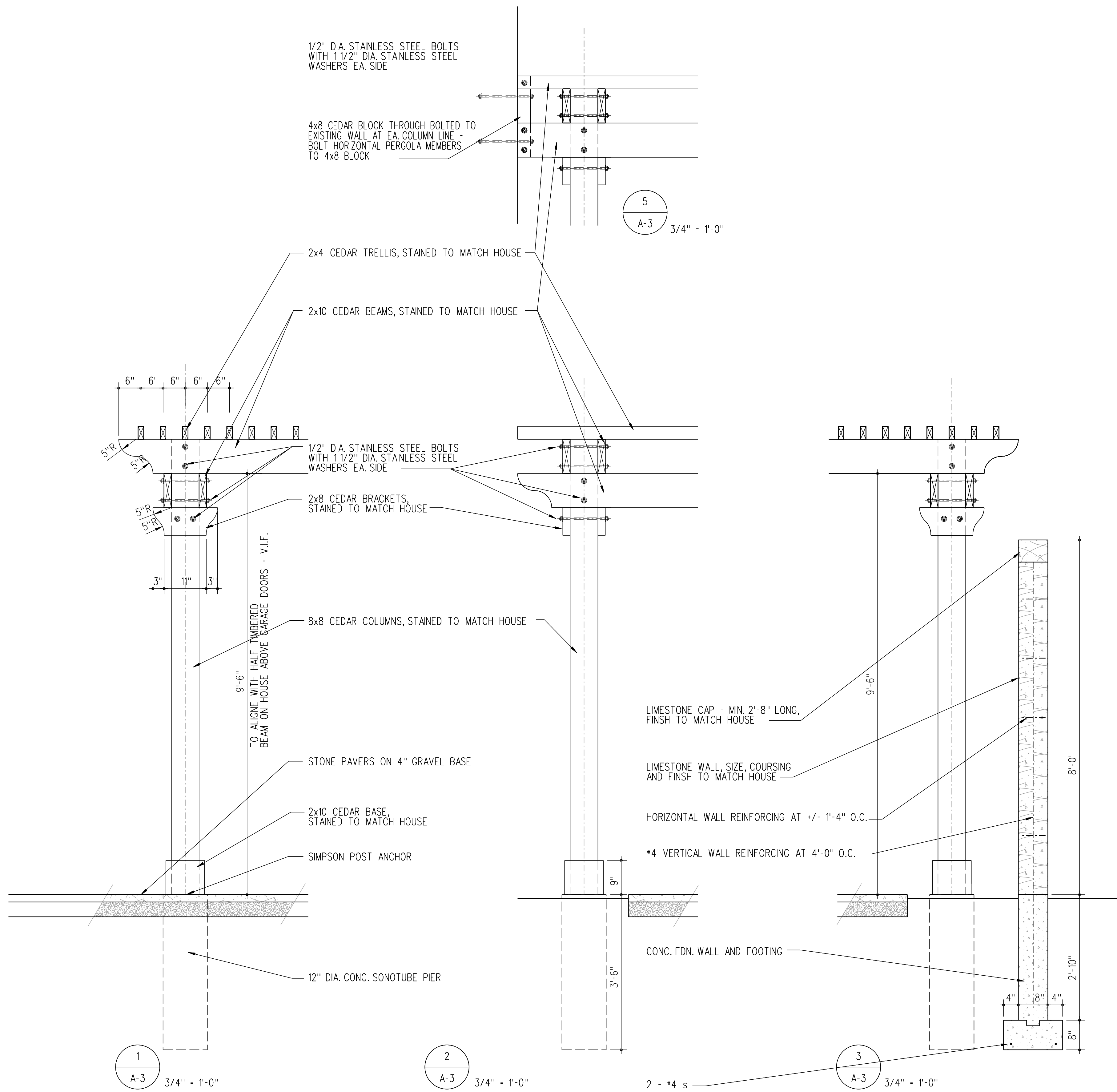
AURORA
PROJ. NO. 00715

07.07.16
ORBIS ARCHITECTS, INC. 432 E. 14TH STREET, LOCKPORT, ILLINOIS
815-673-9400
COPYRIGHT © 2016 ORBIS ARCHITECTS, INC.

ILLINOIS

A-2

FAX 815-588-0987



SECTIONS

SECTIONS

JURIGA RESIDENCE - PERGOLA AND SHED