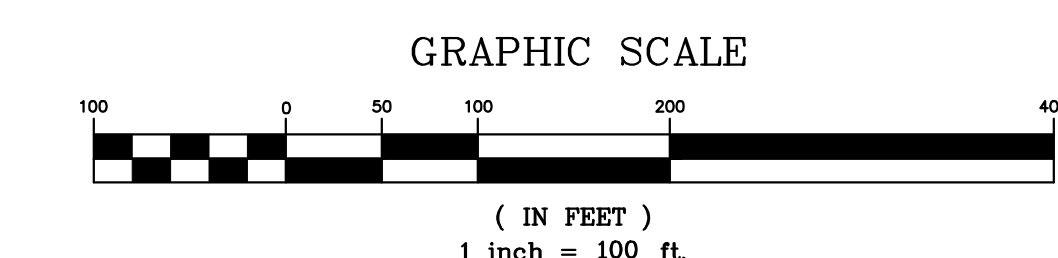


PLAT OF SURVEY



LEGAL DESCRIPTION
 LOTS 1, 3 AND 4, IN THE FIRST RESUBDIVISION OF FOX VALLEY EAST, REGION 1 UNIT NUMBER 1, BEING A SUBDIVISION OF PART OF SECTION 21, TOWNSHIP 38 NORTH, RANGE 9 EAST OF THE THIRD PRINCIPAL MERIDIAN, ACCORDING TO THE PLAT THEREOF RECORDED JUNE 22, 2021 AS DOCUMENT R2021-096023 ALL IN DUPAGE COUNTY, ILLINOIS.

- LEGEND**
- FOUND 7/8" O.D.I.P. UNLESS OTHERWISE NOTED
 - CONCRETE MONUMENT
 - ⊕ CROSS IN CONCRETE
 - ⊕ MANHOLE
 - ⊕ STORM STRUCTURE
 - ⊕ SANITARY MANHOLE
 - ⊕ CLEANOUT
 - ⊕ FLARED END SECTION
 - ⊕ TRANSFORMER PAD
 - ⊕ ELECTRIC MANHOLE
 - ⊕ ELECTRIC BOX
 - ⊕ ELECTRIC PEDESTAL
 - ⊕ ELECTRIC MARKER
 - ⊕ ELECTRIC METER
 - ⊕ UTILITY POLE
 - ⊕ UTILITY POLE W/LIGHT
 - ⊕ UTILITY POLE W/STRE
 - ⊕ OVERHEAD TRAFFIC SIGNAL
 - ⊕ TRAFFIC SIGNAL MANHOLE
 - ⊕ LIGHT
 - ⊕ LIGHT POLE
 - ⊕ HAND HOLE
 - ⊕ VALVE VAULT
 - ⊕ FIRE HYDRANT
 - ⊕ SPRINKLER CONTROL VALVE
 - ⊕ POST INDICATOR VALVE
 - ⊕ SAMPLER WATER CONNECTION
 - ⊕ WATER METER
 - ⊕ VALVE BOX
 - ⊕ SPRINKLER CONTROL VALVE
 - ⊕ TELEPHONE MANHOLE
 - ⊕ TELEPHONE NETWORK INTERFACE
 - ⊕ TELEPHONE MARKER
 - ⊕ TELEPHONE PEDESTAL
 - ⊕ CABLE TELEVISION PEDESTAL
 - ⊕ CONTROL BOX
 - ⊕ GAS METER
 - ⊕ GAS VALVE
 - ⊕ DOWN SPOUT
 - ⊕ MONITORING WELL
 - ⊕ GATE POST
 - ⊕ SOLARIS POLE
 - ⊕ SIGN
 - ⊕ FLAG POLE
 - ⊕ MAILBOX
 - ⊕ SANITARY SEWER
 - ⊕ STORM SEWER
 - ⊕ WATER MAIN
 - ⊕ GAS MAIN
 - ⊕ ELECTRIC LINE
 - ⊕ OVERHEAD WIRES
 - ⊕ TELEPHONE LINE
 - ⊕ TREE LINE
 - ⊕ CONCRETE TREE W/APPROX. DIAMETER
 - ⊕ DECIDUOUS TREE W/APPROX. DIAMETER
 - ⊕ DECIDUOUS TREE W/APPROX. DIAMETER
 - ⊕ TREE LINE (DRIP LINE SHOWN IS APPROXIMATE)
 - ⊕ ELEVATION
 - ⊕ BITUMINOUS PAVEMENT
 - ⊕ CONCRETE SURFACE
 - ⊕ ASPHALT SURFACE
 - ⊕ GRAVEL SURFACE
 - ⊕ LANDSCAPE AREA
 - ⊕ STONE SURFACE
 - ⊕ RETRACTIBLE TACTILE WARNING SURFACE
 - ⊕ BRICK PAVED
 - ⊕ WOOD FENCE
 - ⊕ CHAIN LINK FENCE
 - ⊕ METAL FENCE
 - ⊕ METAL GUARDRAIL
 - ⊕ OVERHEAD TRAFFIC SIGN

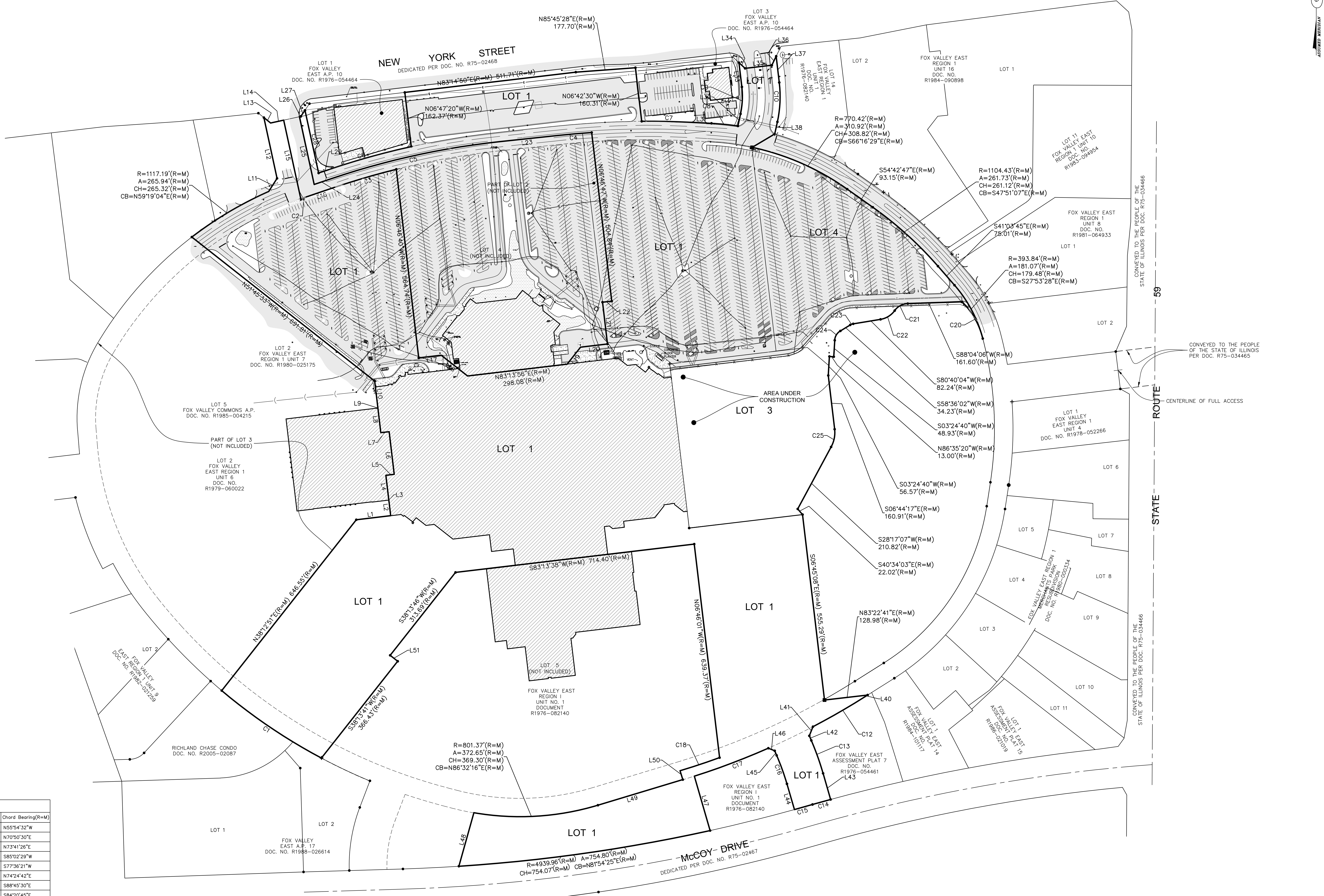
Parcel Line Table

Line #	Direction(R=M)	Length
L1	N83°16'00"E	102.94(R=M)
L2	N6°45'33"W	46.55(R=M)
L3	N83°14'27"E	0.08(R=M)
L4	N6°45'33"W	74.42(R=M)
L5	N83°14'27"E	25.00(R=M)
L6	N6°45'33"W	127.58(R=M)
L7	S83°14'27"W	25.00(R=M)
L8	N6°45'33"W	73.71(R=M)
L9	N83°14'27"E	0.08(R=M)
L10	N6°45'33"W	80.74(R=M)
L11	N32°36'12"E	46.42(R=M)
L12	N12°15'06"W	184.94(R=M)
L13	S51°11'44"E	25.61(R=M)
L14	N77°43'13"E	39.84(R=M)
L15	S12°15'06"E	239.35(R=M)
L16	N71°19'45"E	89.22(R=M)
L17	N83°13'56"E	67.36(R=M)
L18	S51°46'04"E	99.64(R=M)
L19	N38°13'56"E	64.28(R=M)
L20	N83°13'56"E	80.55(R=M)
L21	N6°45'47"W	125.07(R=M)
L22	N83°25'42"E	27.57(R=M)
L23	S83°54'48"W	175.01(R=M)
L24	S71°19'45"W	54.95(R=M)
L25	N12°15'06"W	206.17(R=M)
L26	N77°43'13"E	4.07(R=M)
L27	N34°02'40"E	22.06(R=M)
L28	S12°17'00"E	190.96(R=M)
L29	N71°19'45"E	31.54(R=M)
L30	S87°05'56"E	60.00(R=M)
L31	N12°07'28"E	36.81(R=M)
L32	N6°53'49"W	72.72(R=M)
L33	S47°03'27"E	24.88(R=M)
L34	N83°15'21"E	80.03(R=M)
L35	N26°00'23"E	29.53(R=M)
L36	S6°41'45"E	78.52(R=M)
L37	S12°32'38"W	36.88(R=M)
L38	S7°45'34"W	103.87(R=M)
L39	S21°41'23"W	29.16(R=M)
L40	S23°20'02"E	80.73(R=M)
L41	S16°03'11"E	80.73(R=M)
L42	N16°14'30"W	79.83(R=M)
L43	N22°30'31"W	14.96(R=M)
L44	N68°11'38"W	20.50(R=M)
L45	S16°06'11"E	168.35(R=M)
L46	N15°39'23"E	165.37(R=M)
L47	N73°10'41"E	263.49(R=M)
L48	N17°27'46"W	27.50(R=M)
L49	S51°34'43"E	28.51(R=M)

Curve Table

Curve #	Length	Radius	Chord Length(R=M)	Chord Bearing(R=M)
C1	358.54(R=M)	1686.23(R=M)	357.87	N55°54'32"W
C2	17.14(R=M)	1061.69(R=M)	17.14	N70°50'30"E
C3	190.93(R=M)	2302.01(R=M)	190.88	N73°41'28"E
C4	100.34(R=M)	2513.24(R=M)	100.34	S85°02'29"W
C5	511.59(R=M)	2329.51(R=M)	510.56	S77°36'21"W
C6	254.88(R=M)	2357.51(R=M)	254.75	N74°24'42"E
C7	147.21(R=M)	2541.24(R=M)	147.19	S88°45'30"E
C8	79.32(R=M)	825.42(R=M)	79.29	S84°20'45"E
C9	80.61(R=M)	241.80(R=M)	80.24	N2°52'31"E
C10	117.82(R=M)	353.80(R=M)	117.27	S2°42'27"W
C11	177.88(R=M)	2195.24(R=M)	177.83	S67°02'34"W
C12	104.02(R=M)	823.54(R=M)	103.95	S19°40'44"E
C13	55.79(R=M)	5060.00(R=M)	55.79	S74°27'36"W
C14	55.80(R=M)	4939.96(R=M)	55.79	S74°12'34"W
C15	89.89(R=M)	711.54(R=M)	89.83	S19°51'39"E
C16	235.04(R=M)	2195.24(R=M)	234.93	S69°16'19"W
C17	123.86(R=M)	2167.24(R=M)	123.84	N71°38'50"E
C18	126.96(R=M)	230.00(R=M)	125.35	N29°18'55"W
C19	45.56(R=M)	50.00(R=M)	44.00	S61°57'58"W
C20	50.83(R=M)	65.00(R=M)	49.54	N58°15'57"E
C21	9.63(R=M)	25.00(R=M)	9.57	S69°38'03"W
C22	33.71(R=M)	35.00(R=M)	32.43	S31°00'21"W
C23	53.18(R=M)	87.00(R=M)	52.36	N10°46'29"E

NOTE: HEAVY BOUNDARY LINES DEPICT WRITTEN TITLE, OR DEED LINES - BUILDING AND EASEMENT LINES SHOWN PER RECORDED SUBDIVISION PLAT. REFER TO TITLE POLICY FOR SUBSEQUENT RESTRICTIONS.



- ABBREVIATIONS**
- O.D.I.P. = OUTSIDE DIAMETER IRON PIPE
 - (R) = RECORD BEARING OR DISTANCE
 - (M) = MEASURED BEARING OR DISTANCE
 - (C) = CALCULATED BEARING OR DISTANCE
 - (D) = DEED BEARING OR DISTANCE
 - B.S.L. = BUILDING SETBACK LINE
 - U.E. = UTILITY EASEMENT
 - D.E. = DRAINAGE EASEMENT
 - P.U.E. = PUBLIC UTILITY EASEMENT
 - P.O.C. = POINT OF COMMENCEMENT
 - P.O.B. = POINT OF BEGINNING
 - P.U. & D.E. = PUBLIC UTILITY AND DRAINAGE EASEMENT

- LEGEND**
- FOUND 7/8" O.D.I.P. UNLESS OTHERWISE NOTED
 - SET CONCRETE MONUMENT UNLESS OTHERWISE NOTED
 - ⊕ SET CROSS IN CONCRETE UNLESS OTHERWISE NOTED

- LINE LEGEND**
- SUBDIVISION BOUNDARY LINE
 - ADJACENT LAND PARCEL LINE
 - LOT LINE
 - EASEMENT LINE
 - CENTERLINE
 - BUILDING SETBACK LINE
 - SECTION LINE

SURVEYOR'S CERTIFICATION

STATE OF ILLINOIS
 COUNTY OF KANE | 55

SCOTT C. KREBS
 35-3009
 AURORA, ILLINOIS
 LICENSE EXPIRES 4/30/2025

DATE: DECEMBER 10, 2021
 ILLINOIS PROFESSIONAL LAND SURVEYOR NO. 3009
 LICENSE EXPIRES 1/26/2022

DATE: 12-09-2021 | PC | CS | DRAWN BY: SK | CHECKED BY: SK | BOOK: 477 PG: 33

REVISIONS

CLIENT: **Kimley-Horn**
 2017 KIMLEY-HORN AND ASSOCIATES, INC.
 100 W. WASHINGTON ROAD, SUITE 300
 AURORA, ILLINOIS 60007
 WWW.KIMLEY-HORN.COM

PROJECT: Fox Valley Mall
 Centennial REC
 Aurora, IL

COMPASS SURVEYING LTD
 ALTA SURVEYS • TOPOGRAPHY • CONSTRUCTION STAKING
 2651 GINGER WOODS PARKWAY, STE. 100
 AURORA, IL 60007
 PHONE: (630) 220-0100 FAX: (630) 220-0101 EMAIL: ADMIN@COMPASSSURVEYING.COM

SCALE: 1" = 100'

1 OF 1

PROJ: NO. 21.0147-04A