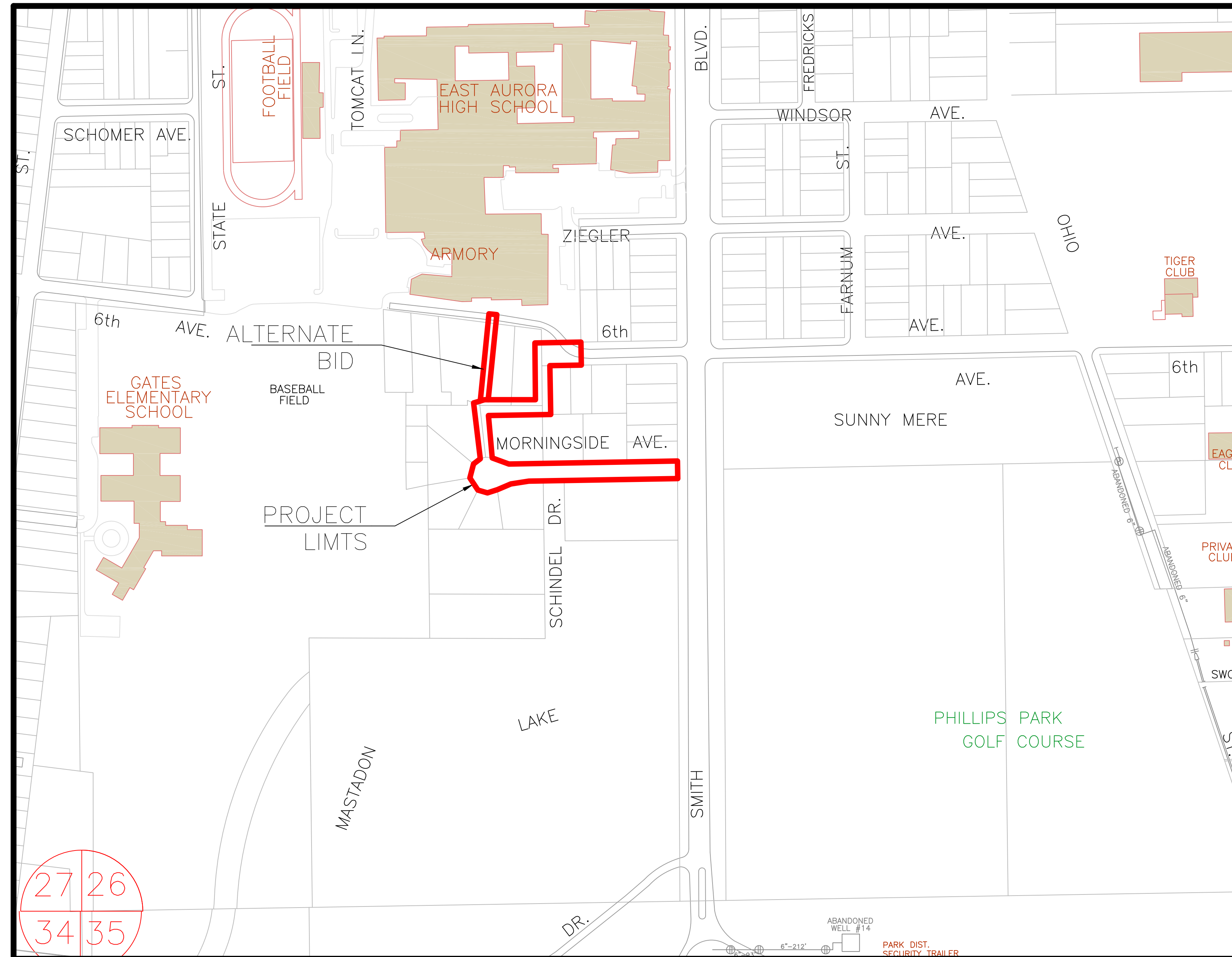


# MORNINGSIDE AVENUE WATER MAIN REPLACEMENT

JULY, 2017

GENERALLY LOCATED: SW 1/4 SECTION 26, T38N, R8E, AURORA TOWNSHIP

LEGEND	
EXISTING	PROPOSED
SANITARY SEWER 8" PVC	---
STORM SEWER 12" STORM	---
WATERMAIN 8" WY	---
GAS LINE	---
TELEPHONE LINE	---
ELECTRIC LINE	---
FENCE	---
INDEX CONTOUR	---
INTERMEDIATE CONTOUR	---
EDGE OF PAVEMENT	---
CURB AND GUTTER	---
RIGHT-OF-WAY	---
SANITARY MANHOLE	⊙
SANITARY CLEANOUT	⊙
STORM MANHOLE	⊙
CATCH BASIN	⊙
INLET	⊙
FLARED END SECTION	⊙
FIRE HYDRANT	⊙
VALVE VAULT	⊙
VALVE BOX	⊙
STREET LIGHT	⊙
POWER POLE	⊙
STREET SIGN	⊙
ELECTRIC BOX	⊙
TELEPHONE BOX	⊙
TELEPHONE MANHOLE	⊙
B-BOX	⊙
GAS VALVE	⊙
TRAFFIC HANDHOLE	⊙
ELECTRIC HANDHOLE	⊙
MAILBOX	⊙
PARKING METER	⊙
TREE W/ DIAMETER	⊙
UTILITY CROSSING	⊙
SPOT ELEVATION	X 682.6
TOP OF CURB ELEVATION	X 682.6 TC
TOP OF FOUNDATION ELEVATION	X 682.6 TF
GUTTER ELEVATION	X 682.6 FL
PAVEMENT ELEVATION	X 682.6 F
FORCE MAIN	---
UNDERDRAIN	---
OVERHEAD LINE	---
CABLE TV LINE	---
HIGH WATER LEVEL	---
NORMAL WATER LEVEL	---
PAVEMENT FLOW DIRECTION	---
EXPLORATORY EXCAVATION LOCATION	●
ADDRESS	123
SANITARY MANHOLE REHABILITATION NUMBER	3-C-100
SOIL BORING LOCATION WITH IDENTIFICATION NUMBER & ELEVATION	SB #1 600.00
STRUCTURE TO BE REMOVED	⊗
PLUG EXISTING PIPE	⊗



## INDEX OF SHEETS

- 1 COVER SHEET
- 2 OVERALL SITE PLAN
- 3-5 PLAN AND PROFILE
- 6-10 STANDARD DETAIL SHEETS

PLANS PREPARED BY:

**CITY OF AURORA**

DEPARTMENT OF PUBLIC WORKS, DIVISION OF ENGINEERING

44 E. DOWNER PLACE - AURORA, IL

PHONE: 630-256-3200 FAX: 630-256-3229

### REVISIONS:

DESIGNED BY: KTM	DRAWN BY: KTM	CHECKED BY: JMB	APPROVED BY: JMB	HORIZ. SCALE: N/A	DATE: JUL 2017
				VERT. SCALE: N/A	

ILLINOIS REGISTERED PROFESSIONAL

ENGINEER No. 062-59993

LICENSE EXPIRES NOVEMBER 30, 2017