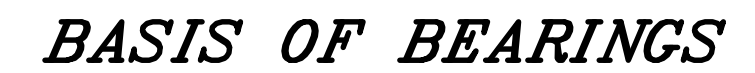


PART OF THE EAST HALF OF SECTION 18, AND
PART OF LOT 555 IN LINCOLN PRAIRIE BY DEL WEBB - PHASE 1A, RECORDED AS
DOCUMENT NUMBER R2022-037215, BEING A SUBDIVISION OF PART OF SECTION
17 AND 18, TOWNSHIP 37 NORTH, RANGE 9, EAST OF THE THIRD PRINCIPAL
MERIDIAN, IN WILL COUNTY, ILLINOIS.



LEGEND

- | LINE TABLE | | |
|------------|-------------|---------|
| LINE | BEARING | LENGTH |
| L1 | S34°57'38"W | 117.43' |
| L2 | N28°26'55"E | 90.01' |
| L3 | N61°33'05"W | 25.00' |

CURVE TABLE				
CURVE	RADIUS	LENGTH	CHORD BEARING	CHORD
C1	46.18'	102.74'	N32°45'19"E	82.82'
C2	27.08'	20.90'	N53°09'40"W	20.38'
C3	65.33'	113.34'	N25°38'24"W	99.65'
C4	82.34'	50.71'	N41°42'27"E	49.92'
C5	26.89'	38.38'	N15°02'38"E	35.20'
C6	11.06'	28.32'	N13°18'25"W	21.20'
C7	2.43'	2.49'	N31°06'20"E	2.39'
C8	70.84'	35.98'	N11°01'59"E	35.60'
C9	50.59'	51.78'	N03°07'01"W	49.55'

Development Data Table: Plat of Vacation		
Description	Value	Unit
a) Tax/Parcel Identification Number(s) (PINs):		
07-01-17-100-021-0000, 07-01-17-100-023-0000, 07-01-18-200-002-0020, 07-01-18-200-003-0000, 07-01-18-200-007-0010, 07-01-18-400-006-0020		
b) Right of way being Vacated	0.00	Acres
	0.00	Square Feet
c) Easement being Vacated	23.595	Acres
	1,027.782	Square Feet

[illegible]

Manhard
CONSULTING LTD.
2008 Broadway Drive, Suite 200, Evanston, IL 60201-4500
Tel: (847) 486-1000 Fax: (847) 486-1001
E-mail: info@manhard.com
Web: www.manhard.com

PROPOSED DEVELOPMENT FOR:
OWNER: LINCOLN PRAIRIE AURORA LLC
PETITIONER: PUT TO HOME COMPANY
1900 E GOLF ROAD, SUITE 300
SCHMUNBERG, IL 60173
CONTACT: MATT BROLEY, P.E.
(830) 777-2873

LINCOLN PRAIRIE BY DEL WEBB

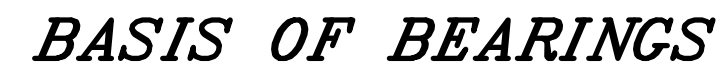
AURORA, ILLINOIS

PLAT OF VACATION

PROJ. MGR.: <u>JID</u>		
PROJ. ASSOC.: <u>PGA</u>		
DRAWN BY: <u>PGA</u>		
DATE: <u>12/22/22</u>		
SCALE: <u>1"=100'</u>		
<p>SHEET</p> <div style="display: flex; justify-content: space-around; align-items: center; font-size: 48px; font-weight: bold;"> 1 OF 3 </div> <p>PULAUIL01</p>		

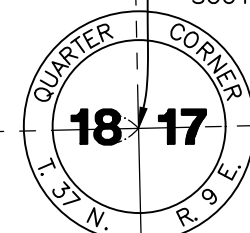
January 27, 2023 - 09:57 Dwg Name: P:\Pulaul01\dwg\Surv\Final Drawings\Plat of Vacation\01-03-PULAUL01-LOT 555-DW OFFSITE-PV.dwg Updated By: panderson

PART OF THE EAST HALF OF SECTION 18, AND
PART OF LOT 555 IN LINCOLN PRAIRIE BY DEL WEBB - PHASE 1A, RECORDED AS
DOCUMENT NUMBER R2022-037215, BEING A SUBDIVISION OF PART OF SECTION
17 AND 18, TOWNSHIP 37 NORTH, RANGE 9, EAST OF THE THIRD PRINCIPAL
MERIDIAN, IN WILL COUNTY, ILLINOIS.



LEGEND

- STORMWATER CONTROL EASEMENT
= PER DOCUMENT NUMBER R2022-037217
HEREBY VACATED



PLAT OF VACATION

PART OF THE EAST HALF OF SECTION 18, AND
PART OF LOT 555 IN LINCOLN PRAIRIE BY DEL WEBB – PHASE 1A, RECORDED AS
DOCUMENT NUMBER R2022–037215, BEING A SUBDIVISION OF PART OF SECTION
17 AND 18, TOWNSHIP 37 NORTH, RANGE 9, EAST OF THE THIRD PRINCIPAL
MERIDIAN, IN WILL COUNTY, ILLINOIS.

FRANCHISE CERTIFICATE

STATE OF ILLINOIS)
)SS
COUNTY OF WILL)

THE UNDERSIGNED HEREBY CERTIFY THAT THERE ARE NO EXISTING FACILITIES
WITHIN THE DEPICTED EASEMENT/RIGHT OF WAY AND FURTHER CERTIFY AS
AGENT FOR THEIR RESPECTIVE UTILITY, ALL RIGHTS AND EASEMENTS
CURRENTLY EXISTING WITHIN SAID EASEMENT/RIGHT OF WAY ARE HEREBY
RELINQUISHED AND VACATED.

NICOR:
THIS _____ DAY OF _____, A.D. 2023.

SIGNATURE _____

PRINTED NAME AND TITLE _____

WITNESS _____

AT&T:

THIS _____ DAY OF _____, A.D. 2023.

SIGNATURE _____

PRINTED NAME AND TITLE _____

WITNESS _____

COMMONWEALTH EDISON:
THIS _____ DAY OF _____, A.D. 2023.

SIGNATURE _____

PRINTED NAME AND TITLE _____

WITNESS _____

COMCAST:
THIS _____ DAY OF _____, A.D. 2023.

SIGNATURE _____

PRINTED NAME AND TITLE _____

WITNESS _____

CITY CLERK'S CERTIFICATE

STATE OF ILLINOIS)
)SS
COUNTY OF KANE)

THIS IS TO CERTIFY THAT THE ABOVE PLAT CORRECTLY REPRESENTS THE VACATION DEPICTED
HEREON, AND HAS BEEN ACCEPTED BY

ORDINANCE NUMBER _____, A PROPER ORDINANCE ADOPTED BY THE
AURORA CITY COUNCIL

ON _____, 2023.

JENNIFER STALLINGS, CITY CLERK

WILL COUNTY CLERK'S CERTIFICATE

STATE OF ILLINOIS)
)SS
COUNTY OF WILL)

I, THE UNDERSIGNED, AS COUNTY CLERK OF WILL COUNTY, ILLINOIS, DO HEREBY CERTIFY THAT
THERE ARE NO DELINQUENT GENERAL TAXES, NO UNPAID OR FORFEITED TAXES, AND NO
REDEEMABLE TAX SALES AGAINST ANY OF THE LAND HEREON. I FURTHER CERTIFY THAT I
HAVE RECEIVED ALL STATUTORY FEES IN CONNECTION WITH THE PLAT DEPICTED HEREON.

GIVEN UNDER MY HAND AND SEAL OF THE COUNTY CLERK AT _____
ILLINOIS, THIS _____ DAY OF _____, A.D., 2023.

COUNTY CLERK _____

PLEASE TYPE/PRINT NAME _____

WILL COUNTY RECORDER'S CERTIFICATE

STATE OF ILLINOIS)
)SS
COUNTY OF WILL)

I, THE UNDERSIGNED, AS THE RECORDER OF DEEDS FOR WILL COUNTY DO HEREBY CERTIFY THAT
INSTRUMENT NUMBER _____ WAS FILED FOR RECORD IN THE
RECORDER'S OFFICE OF WILL COUNTY, ILLINOIS, ON THE _____
_____ DAY OF _____, A.D., 2023 AT _____ O'CLOCK ____M.

RECORDER OF DEEDS _____

PLEASE TYPE/PRINT NAME _____

CITY ENGINEER'S CERTIFICATE

STATE OF ILLINOIS)
)SS
COUNTY OF KANE)

I, THE UNDERSIGNED, AS CITY ENGINEER OF THE CITY OF AURORA, IN KANE, DUPAGE, KENDALL,
AND WILL COUNTIES, ILLINOIS, DO HEREBY CERTIFY THAT THIS DOCUMENT IS APPROVED UNDER MY
OFFICES

THIS _____ DAY OF _____, A.D., 2023.

KEN SCHROTH, CITY ENGINEER

CITY COUNCIL CERTIFICATE

STATE OF ILLINOIS)
)SS
COUNTY OF KANE)

APPROVED THIS _____ DAY OF _____, A.D., 2023 BY THE CITY
COUNCIL OF THE CITY OF AURORA, PURSUANT TO ORDINANCE/RESOLUTION NUMBER _____

BY: _____
RICHARD C. IRVIN, MAYOR

ATTEST: _____
JENNIFER STALLINGS, CITY CLERK

VACATION LEGAL DESCRIPTIONS

STORMWATER CONTROL EASEMENT – LOT 578 – PARCEL 1:

PART OF THE NORTHEAST QUARTER AND SOUTHEAST QUARTER OF SECTION 18, TOWNSHIP 37
NORTH, RANGE 9, EAST OF THE THIRD PRINCIPAL MERIDIAN, IN WILL COUNTY, ILLINOIS,
DESCRIBED AS FOLLOWS: COMMENCING AT THE NORTHEAST CORNER OF SAID SOUTHEAST
QUARTER OF SECTION 18, THENCE SOUTH 88 DEGREES 43 MINUTES 16 SECONDS WEST, ALONG
THE NORTH LINE OF SAID SOUTHEAST QUARTER, A DISTANCE OF 1279.75 FEET; THENCE
NORTH 30 DEGREES 33 MINUTES 02 SECONDS WEST, A DISTANCE OF 114.89 FEET TO THE
POINT OF BEGINNING;

THENCE SOUTH 41 DEGREES 33 MINUTES 09 SECONDS WEST, A DISTANCE OF 136.00 FEET TO
A POINT OF CURVATURE; THENCE SOUTHWESTERLY, ALONG A CURVE, CONCAVE TO THE
SOUTHEAST, HAVING A RADIUS OF 840.00 FEET, AN ARC DISTANCE OF 48.56 FEET, A CHORD
BEARING SOUTH 39 DEGREES 53 MINUTES 46 SECONDS WEST, AND A CHORD DISTANCE OF
48.55 FEET TO A POINT OF NON-TANGENCY; THENCE NORTH 27 DEGREES 23 MINUTES 02
SECONDS WEST, A DISTANCE OF 0.30 FEET TO A POINT ON A NON-TANGENT CURVE; THENCE
NORTHEASTERLY, ALONG A CURVE, CONCAVE TO THE NORTHWEST, HAVING A RADIUS OF
600.00 FEET, AN ARC DISTANCE OF 97.87 FEET, A CHORD BEARING NORTH 32 DEGREES 13
MINUTES 08 SECONDS EAST, AND A CHORD DISTANCE OF 97.76 FEET TO A POINT OF
NON-TANGENT COMPOUND CURVATURE; THENCE NORTHEASTERLY, ALONG A CURVE, CONCAVE
TO THE SOUTHEAST, HAVING A RADIUS OF 300.00 FEET, AN ARC DISTANCE OF 96.07 FEET, A
CHORD BEARING NORTH 36 DEGREES 43 MINUTES 15 SECONDS EAST, AND A CHORD DISTANCE
OF 95.66 FEET TO A POINT OF NON-TANGENCY; THENCE SOUTH 30 DEGREES 33 MINUTES 02
SECONDS EAST, A DISTANCE OF 23.94 FEET TO THE POINT OF BEGINNING.

STORMWATER CONTROL EASEMENT – LOT 578 –PARCEL 2:

PART OF THE NORTHEAST QUARTER OF SECTION 18, TOWNSHIP 37 NORTH, RANGE 9, EAST OF
THE THIRD PRINCIPAL MERIDIAN, IN WILL COUNTY, ILLINOIS, DESCRIBED AS FOLLOWS:
COMMENCING AT THE SOUTHEAST CORNER OF SAID NORTHEAST QUARTER OF SECTION 18,
THENCE SOUTH 88 DEGREES 43 MINUTES 16 SECONDS WEST, ALONG THE SOUTH LINE OF SAID
NORTHEAST QUARTER, A DISTANCE OF 1245.36 FEET; THENCE NORTH 30 DEGREES 33 MINUTES
02 SECONDS WEST, A DISTANCE OF 141.30 FEET TO THE POINT OF BEGINNING;

THENCE NORTH 30 DEGREES 33 MINUTES 02 SECONDS WEST, A DISTANCE OF 19.99 FEET TO A
POINT ON A NON-TANGENT CURVE; THENCE NORTHEASTERLY, ALONG A CURVE, CONCAVE TO
THE SOUTHEAST, HAVING A RADIUS OF 300.00 FEET, AN ARC DISTANCE OF 130.25 FEET, A
CHORD BEARING NORTH 64 DEGREES 09 MINUTES 56 SECONDS EAST, AND A CHORD DISTANCE
OF 129.23 FEET TO A POINT OF NON-TANGENT COMPOUND CURVATURE; THENCE EASTERLY,
ALONG A CURVE, CONCAVE TO THE NORTH, HAVING A RADIUS OF 734.19 FEET, AN ARC
DISTANCE OF 11.78 FEET, A CHORD BEARING NORTH 75 DEGREES 49 MINUTES 11 SECONDS
EAST, AND A CHORD DISTANCE OF 11.78 FEET TO A POINT OF NON-TANGENT COMPOUND
CURVATURE; THENCE SOUTHWESTERLY, ALONG A CURVE, CONCAVE TO THE SOUTHEAST, HAVING
A RADIUS OF 290.00 FEET, AN ARC DISTANCE OF 141.63 FEET, A CHORD BEARING SOUTH 58
DEGREES 59 MINUTES 50 SECONDS WEST, AND A CHORD DISTANCE OF 140.23 FEET TO THE
POINT OF BEGINNING.

STORMWATER CONTROL EASEMENT – LOT 578 –PARCEL 3:

PART OF THE NORTHEAST QUARTER OF SECTION 18, TOWNSHIP 37 NORTH, RANGE 9, EAST OF
THE THIRD PRINCIPAL MERIDIAN, IN WILL COUNTY, ILLINOIS, DESCRIBED AS FOLLOWS:
COMMENCING AT THE SOUTHEAST CORNER OF SAID NORTHEAST QUARTER OF SECTION 18,
THENCE SOUTH 88 DEGREES 43 MINUTES 16 SECONDS WEST, ALONG THE SOUTH LINE OF SAID
NORTHEAST QUARTER, A DISTANCE OF 1245.36 FEET; THENCE NORTH 30 DEGREES 33 MINUTES
02 SECONDS WEST, A DISTANCE OF 141.30 FEET; THENCE EASTERLY, ALONG A CURVE,
CONCAVE TO THE SOUTH, HAVING A RADIUS OF 290.00 FEET, AN ARC DISTANCE OF 173.48
FEET, A CHORD BEARING NORTH 60 DEGREES 07 MINUTES 05 SECONDS EAST, AND A CHORD
DISTANCE OF 170.91 FEET TO THE POINT OF BEGINNING;

THENCE EASTERLY, ALONG A CURVE, CONCAVE TO THE NORTH, HAVING A RADIUS OF 734.19
FEET, AN ARC DISTANCE OF 48.64 FEET, A CHORD BEARING NORTH 70 DEGREES 58 MINUTES
42 SECONDS EAST, AND A CHORD DISTANCE OF 48.63 FEET TO A POINT OF NON-TANGENCY;
THENCE SOUTH 27 DEGREES 15 MINUTES 57 SECONDS EAST, A DISTANCE OF 2.71 FEET TO A
POINT ON A NON-TANGENT CURVE; THENCE WESTERLY, ALONG A CURVE, CONCAVE TO THE
NORTH, HAVING A RADIUS OF 280.00 FEET, AN ARC DISTANCE OF 44.23 FEET, A CHORD
BEARING SOUTH 73 DEGREES 42 MINUTES 39 SECONDS WEST, AND A CHORD DISTANCE OF
44.18 FEET TO A POINT OF NON-TANGENT COMPOUND CURVATURE; THENCE WESTERLY, ALONG
A CURVE, CONCAVE TO THE SOUTH, HAVING A RADIUS OF 290.00 FEET, AN ARC DISTANCE OF
4.92 FEET, A CHORD BEARING SOUTH 77 DEGREES 44 MINUTES 59 SECONDS WEST, AND A
CHORD DISTANCE OF 4.92 FEET TO THE POINT OF BEGINNING.

VACATION LEGAL DESCRIPTIONS

STORMWATER CONTROL EASEMENT – LOT 555

PART OF LOT 555 IN LINCOLN PRAIRIE BY DEL WEBB – PHASE 1A, AS DOCUMENT NUMBER
R2022–037215, DESCRIBED AS FOLLOWS:

BEGINNING AT THE SOUTHWEST CORNER OF LOT 126 IN SAID LINCOLN PRAIRIE BY DEL WEBB –
PHASE 1A, THENCE ALONG THE BOUNDARY OF SAID LOT 555 FOR THE NEXT FORTY–THREE
(43) COURSES: (1) THENCE SOUTH 87 DEGREES 29 MINUTES 02 SECONDS EAST, A DISTANCE
OF 74.14 FEET; (2) THENCE SOUTH 79 DEGREES 20 MINUTES 55 SECONDS EAST, A DISTANCE
OF 74.14 FEET; (3) THENCE NORTH 89 DEGREES 56 MINUTES 43 SECONDS EAST, A DISTANCE
OF 93.15 FEET; (4) THENCE NORTH 69 DEGREES 41 MINUTES 00 SECONDS EAST, A DISTANCE
OF 93.12 FEET; (5) THENCE NORTH 62 DEGREES 24 MINUTES 11 SECONDS EAST, A DISTANCE
OF 349.09 FEET; (6) THENCE NORTH 32 DEGREES 58 MINUTES 22 SECONDS EAST, A DISTANCE
OF 104.23 FEET; (7) THENCE NORTH 18 DEGREES 09 MINUTES 48 SECONDS EAST, A DISTANCE
OF 85.91 FEET; (8) THENCE NORTH 73 DEGREES 30 MINUTES 09 SECONDS WEST, A DISTANCE
OF 131.60 FEET TO A POINT ON A NON-TANGENT CURVE; (9) THENCE NORTHERLY, ALONG A
CURVE, CONCAVE TO THE WEST, HAVING A RADIUS OF 166.00 FEET, AN ARC DISTANCE OF
93.08 FEET, A CHORD BEARING NORTH 11 DEGREES 32 MINUTES 00 SECONDS WEST, AND A
CHORD DISTANCE OF 91.87 FEET TO A POINT OF TANGENCY; (10) THENCE NORTH 27 DEGREES
35 MINUTES 49 SECONDS WEST, A DISTANCE OF 15.00 FEET; (11) THENCE NORTH 62 DEGREES
24 MINUTES 11 SECONDS EAST, A DISTANCE OF 206.00 FEET; (12) THENCE NORTH 63
DEGREES 23 MINUTES 25 SECONDS EAST, A DISTANCE OF 64.58 FEET; (13) THENCE NORTH 72
DEGREES 48 MINUTES 56 SECONDS EAST, A DISTANCE OF 60.03 FEET; (14) THENCE NORTH 11
DEGREES 37 MINUTES 41 SECONDS WEST, A DISTANCE OF 125.00 FEET TO A POINT ON A
NON-TANGENT CURVE; (15) THENCE EASTERLY, ALONG A CURVE, CONCAVE TO THE SOUTH,
HAVING A RADIUS OF 435.00 FEET, AN ARC DISTANCE OF 361.98 FEET, A CHORD BEARING
SOUTH 77 DEGREES 47 MINUTES 21 SECONDS EAST, AND A CHORD DISTANCE OF 351.63 FEET
TO A POINT OF NON-TANGENCY; (16) THENCE SOUTH 36 DEGREES 02 MINUTES 59 SECONDS
WEST, A DISTANCE OF 125.00 FEET; (17) THENCE SOUTH 48 DEGREES 25 MINUTES 06
SECONDS EAST, A DISTANCE OF 59.77 FEET; (18) THENCE SOUTH 37 DEGREES 21 MINUTES 15
SECONDS WEST, A DISTANCE OF 59.77 FEET; (19) THENCE SOUTH 28 DEGREES 17 MINUTES 25
SECONDS EAST, A DISTANCE OF 59.77 FEET; (20) THENCE SOUTH 15 DEGREES 13 MINUTES 34
SECONDS EAST, A DISTANCE OF 59.77 FEET; (21) THENCE SOUTH 04 DEGREES 09 MINUTES 44
SECONDS EAST, A DISTANCE OF 59.77 FEET; (22) THENCE SOUTH 06 DEGREES 54 MINUTES 07
SECONDS WEST, A DISTANCE OF 59.77 FEET; (23) THENCE SOUTH 17 DEGREES 57 MINUTES 57
SECONDS WEST, A DISTANCE OF 59.77 FEET; (24) THENCE SOUTH 29 DEGREES 01 MINUTES 47
SECONDS WEST, A DISTANCE OF 59.77 FEET; (25) THENCE SOUTH 38 DEGREES 49 MINUTES 39
SECONDS WEST, A DISTANCE OF 63.58 FEET; (26) THENCE SOUTH 40 DEGREES 09 MINUTES 36
SECONDS WEST, A DISTANCE OF 396.00 FEET; (27) THENCE SOUTH 49 DEGREES 50 MINUTES
24 SECONDS EAST, A DISTANCE OF 125.00 FEET; THENCE SOUTH 40 DEGREES 09 MINUTES 36
SECONDS WEST, A DISTANCE OF 16.80 FEET TO A POINT OF CURVATURE; (28) THENCE
SOUTHWESTERLY, ALONG A CURVE, CONCAVE TO THE SOUTHEAST, HAVING A RADIUS OF 540.00
FEET, AN ARC DISTANCE OF 40.00 FEET, A CHORD BEARING SOUTH 38 DEGREES 02 MINUTES
17 SECONDS WEST, AND A CHORD DISTANCE OF 39.99 FEET TO A POINT OF NON-TANGENCY;
(29) THENCE NORTH 54 DEGREES 05 MINUTES 03 SECONDS WEST, A DISTANCE OF 125.00
FEET; (30) THENCE SOUTH 32 DEGREES 34 MINUTES 25 SECONDS WEST, A DISTANCE OF 77.54
FEET; (31) THENCE SOUTH 26 DEGREES 07 MINUTES 46 SECONDS WEST, A DISTANCE OF 74.42
FEET; (32) THENCE SOUTH 23 DEGREES 58 MINUTES 48 SECONDS WEST, A DISTANCE OF
32.00 FEET; (33) THENCE SOUTH 25 DEGREES 10 MINUTES 43 SECONDS WEST, A DISTANCE
OF 63.60 FEET; (34) THENCE SOUTH 60 DEGREES 16 SECONDS EAST, A DISTANCE OF
125.00 FEET TO A POINT ON A NON-TANGENT CURVE; (35) THENCE SOUTHWESTERLY,
ALONG A CURVE, CONCAVE TO THE NORTHWEST, HAVING A RADIUS OF 410.00 FEET, AN ARC
DISTANCE OF 41.87 FEET, A CHORD BEARING SOUTH 32 DEGREES 26 MINUTES 16 SECONDS
WEST, AND A CHORD DISTANCE OF 41.85 FEET TO A POINT OF NON-TANGENCY; (36) THENCE
NORTH 54 DEGREES 38 MINUTES 12 SECONDS WEST, A DISTANCE OF 125.00 FEET; (37)
THENCE SOUTH 41 DEGREES 17 MINUTES 19 SECONDS WEST, A DISTANCE OF 58.84 FEET; (38)
THENCE SOUTH 53 DEGREES 08 MINUTES 21 SECONDS WEST, A DISTANCE OF 58.84 FEET; (39)
THENCE SOUTH 64 DEGREES 59 MINUTES 22 SECONDS WEST, A DISTANCE OF 58.84 FEET; (40)
THENCE SOUTH 76 DEGREES 50 MINUTES 24 SECONDS WEST, A DISTANCE OF 58.84 FEET; (41)
THENCE SOUTH 88 DEGREES 41 MINUTES 26 SECONDS WEST, A DISTANCE OF 58.84 FEET; (42)
THENCE NORTH 79 DEGREES 27 MINUTES 33 SECONDS WEST, A DISTANCE OF 58.84 FEET; (43)
THENCE NORTH 73 DEGREES 32 MINUTES 02 SECONDS WEST, A DISTANCE OF 400.82 FEET;
THENCE NORTH 16 DEGREES 27 MINUTES 58 SECONDS EAST, A DISTANCE OF 10.00 FEET;
THENCE NORTH 47 DEGREES 06 MINUTES 47 SECONDS EAST, A DISTANCE OF 95.86 FEET;
THENCE NORTH 32 DEGREES 23 MINUTES 12 SECONDS WEST, A DISTANCE OF 168.47 FEET TO
A POINT OF CURVATURE; THENCE NORTHERLY, ALONG A CURVE, CONCAVE TO THE EAST,
HAVING A RADIUS OF 50.59 FEET, AN ARC DISTANCE OF 51.14 FEET, A CHORD BEARING
NORTH 03 DEGREES 28 MINUTES 41 SECONDS WEST, AND A CHORD DISTANCE OF 48.99 FEET
TO A POINT OF NON-TANGENT CURVATURE; THENCE NORTHERLY, ALONG A CURVE,
CONCAVE TO THE WEST, HAVING A RADIUS OF 70.84 FEET, AN ARC DISTANCE OF 36.62 FEET,
A CHORD BEARING NORTH 11 DEGREES 17 MINUTES 27 SECONDS EAST, AND A CHORD
DISTANCE OF 36.21 FEET TO A POINT OF NON-TANGENT COMPOUND CURVATURE; THENCE
NORTHEASTERLY, ALONG A CURVE, CONCAVE TO THE SOUTHEAST, HAVING A RADIUS OF 2.43
FEET, AN ARC DISTANCE OF 2.46 FEET, A CHORD BEARING NORTH 30 DEGREES 43 MINUTES
34 SECONDS EAST, AND A CHORD DISTANCE OF 2.36 FEET TO A POINT OF NON-TANGENT
COMPOUND CURVATURE; THENCE NORTHERLY, ALONG A CURVE, CONCAVE TO THE WEST,
HAVING A RADIUS OF 11.06 FEET, AN ARC DISTANCE OF 28.35 FEET, A CHORD BEARING
NORTH 13 DEGREES 13 MINUTES 25 SECONDS WEST, AND A CHORD DISTANCE OF 21.21 FEET
TO A POINT OF NON-TANGENCY; THENCE NORTH 39 DEGREES 53 MINUTES 36 SECONDS WEST,
A DISTANCE OF 5.32 FEET TO A POINT ON A NON-TANGENT CURVE; THENCE NORTHERLY,
ALONG A CURVE, CONCAVE TO THE EAST, HAVING A RADIUS OF 26.89 FEET, AN ARC
DISTANCE OF 38.38 FEET, A CHORD BEARING NORTH 15 DEGREES 02 MINUTES 38 SECONDS
EAST, AND A CHORD DISTANCE OF 35.20 FEET TO A POINT OF NON-TANGENT COMPOUND
CURVATURE; THENCE NORTHEASTERLY, ALONG A CURVE, CONCAVE TO THE NORTHWEST, HAVING
A RADIUS OF 82.34 FEET, AN ARC DISTANCE OF 50.72 FEET, A CHORD BEARING NORTH 41
DEGREES 42 MINUTES 05 SECONDS WEST, AND A CHORD DISTANCE OF 49.92 FEET TO A
POINT OF TANGENCY; THENCE NORTH 24 DEGREES 03 MINUTES 33 SECONDS EAST, A DISTANCE
OF 21.01 FEET TO A POINT OF CURVATURE; THENCE NORTHWESTERLY, ALONG A CURVE, CONCAVE
TO THE SOUTHWEST, HAVING A RADIUS OF 65.33 FEET, AN ARC DISTANCE OF 113.34 FEET, A
CHORD BEARING NORTH 25 DEGREES 38 MINUTES 24 SECONDS WEST, AND A CHORD DISTANCE
OF 99.65 FEET TO A POINT OF NON-TANGENT COMPOUND CURVATURE; THENCE
NORTHWESTERLY, ALONG A CURVE, CONCAVE TO THE NORTHEAST, HAVING A RADIUS OF 27.00
FEET, AN ARC DISTANCE OF 20.90 FEET, A CHORD BEARING NORTH 53 DEGREES 09 MINUTES
40 SECONDS WEST, AND A CHORD DISTANCE OF 20.38 FEET TO A POINT OF NON-TANGENT
COMPOUND CURVATURE; THENCE NORTHEASTERLY, ALONG A CURVE, CONCAVE TO THE
SOUTHEAST, HAVING A RADIUS OF 46.18 FEET, AN ARC DISTANCE OF 102.74 FEET, A CHORD
BEARING NORTH 32 DEGREES 19 SECONDS EAST, AND A CHORD DISTANCE OF 82.82 FEET TO A
POINT OF NON-TANGENCY; THENCE NORTH 28 DEGREES 26 MINUTES 55
SECONDS EAST, A DISTANCE OF 21.27 FEET TO THE POINT OF BEGINNING.

EXCEPTING THEREFROM:

PART OF LOT 555 IN LINCOLN PRAIRIE BY DEL WEBB – PHASE 1A, AS DOCUMENT NUMBER
R2022–037215, DESCRIBED AS FOLLOWS: COMMENCING AT THE NORTHEAST CORNER OF LOT
158 IN SAID LINCOLN PRAIRIE BY DEL WEBB – PHASE 1A, THENCE ALONG THE BOUNDARY OF
SAID LOT 555 FOR THE NEXT TWELVE (12) COURSES: (1) THENCE EASTERLY, ALONG A
CURVE, CONCAVE TO THE SOUTH, HAVING A RADIUS OF 435.00 FEET, AN ARC DISTANCE OF
361.98 FEET, A CHORD BEARING SOUTH 77 DEGREES 47 MINUTES 21 SECONDS EAST, AND A
CHORD DISTANCE OF 351.63 FEET TO A POINT OF NON-TANGENCY; (2) THENCE SOUTH 36
DEGREES 02 MINUTES 59 SECONDS WEST, A DISTANCE OF 125.00 FEET; (3) THENCE SOUTH 48
DEGREES 25 MINUTES 06 SECONDS EAST, A DISTANCE OF 59.77 FEET; (4) THENCE SOUTH
37 DEGREES 21 MINUTES 15 SECONDS WEST, A DISTANCE OF 59.77 FEET; (5) THENCE SOUTH 28
DEGREES 17 MINUTES 25 SECONDS EAST, A DISTANCE OF 59.77 FEET; (6) THENCE SOUTH 15
DEGREES 13 MINUTES 34 SECONDS EAST, A DISTANCE OF 59.77 FEET; (7) THENCE SOUTH 04
DEGREES 09 MINUTES 44 SECONDS EAST, A DISTANCE OF 59.77 FEET; (8) THENCE SOUTH 06
DEGREES 54 MINUTES 07 SECONDS WEST, A DISTANCE OF 59.77 FEET; (9) THENCE SOUTH 17
DEGREES 57 MINUTES 57 SECONDS WEST, A DISTANCE OF 59.77 FEET; (10) THENCE SOUTH 29
DEGREES 01 MINUTES 47 SECONDS WEST, A DISTANCE OF 59.77 FEET; (11) THENCE SOUTH 38
DEGREES 49 MINUTES 39 SECONDS WEST, A DISTANCE OF 63.58 FEET; (12) THENCE SOUTH 40
DEGREES 09 MINUTES 36 SECONDS WEST, A DISTANCE OF 396.00 FEET; THENCE SOUTH 38
DEGREES 34 MINUTES 40 SECONDS WEST, A DISTANCE OF 10.00 FEET TO THE POINT OF
BEGINNING;

THENCE SOUTH 40 DEGREES 09 MINUTES 36 SECONDS WEST, A DISTANCE OF 6.80 FEET TO A
POINT OF CURVATURE; THENCE SOUTHWESTERLY, ALONG A CURVE, CONCAVE TO THE
SOUTHEAST, HAVING A RADIUS OF 555.00 FEET, AN ARC DISTANCE OF 31.11 FEET, A CHORD
BEARING SOUTH 38 DEGREES 33 MINUTES 15 SECONDS WEST, AND A CHORD DISTANCE OF
31.11 FEET TO A POINT OF NON-TANGENCY; THENCE NORTH 04 DEGREES 09 MINUTES 03
SECONDS WEST, A DISTANCE OF 109.63 FEET; THENCE NORTH 38 DEGREES 34 MINUTES 40
SECONDS EAST, A DISTANCE OF 46.03 FEET; THENCE SOUTH 49 DEGREES 50 MINUTES 24
SECONDS EAST, A DISTANCE OF 109.72 FEET TO THE POINT OF BEGINNING.

VACATION LEGAL DESCRIPTIONS

CITY EASEMENT – LOT 555

PART OF LOT 555 IN LINCOLN PRAIRIE BY DEL WEBB – PHASE 1A, AS DOCUMENT NUMBER
R2022–037215, DESCRIBED AS FOLLOWS: BEGINNING AT THE SOUTHWEST CORNER OF LOT 126
IN SAID LINCOLN PRAIRIE BY DEL WEBB – PHASE 1A, THENCE NORTH 61 DEGREES 33 MINUTES
05 SECONDS WEST, A DISTANCE OF 25.00 FEET; THENCE NORTH 28 DEGREES 26 MINUTES 55
SECONDS EAST, A DISTANCE OF 90.01 FEET; THENCE NORTH 63 DEGREES 11 MINUTES 20
SECONDS WEST, A DISTANCE OF 4.08 FEET; THENCE SOUTH 34 DEGREES 57 MINUTES 38
SECONDS WEST, A DISTANCE OF 117.43 FEET; THENCE SOUTH 90 DEGREES 00 MINUTES 00
SECONDS WEST, A DISTANCE OF 132.69 FEET; THENCE SOUTH 45 DEGREES 00 MINUTES 00
SECONDS WEST, A DISTANCE OF 7.93 FEET; THENCE SOUTH 00 DEGREES 07 MINUTES 58
SECONDS WEST, A DISTANCE OF 84.97 FEET; THENCE SOUTH 73 DEGREES 36 MINUTES 01
SECONDS WEST, A DISTANCE OF 31.37 FEET; THENCE SOUTH 19 DEGREES 02 MINUTES 00
SECONDS WEST, A DISTANCE OF 236.92 FEET; THENCE SOUTH 64 DEGREES 57 MINUTES 38
SECONDS WEST, A DISTANCE OF 26.69 FEET; THENCE SOUTH 19 DEGREES 57 MINUTES 38
SECONDS WEST, A DISTANCE OF 58.43 FEET; THENCE NORTH 70 DEGREES 02 MINUTES 22
SECONDS WEST, A DISTANCE OF 224.67 FEET; THENCE SOUTH 37 DEGREES 59 MINUTES 14
SECONDS WEST, A DISTANCE OF 104.73 FEET; THENCE SOUTH 04 DEGREES 28 MINUTES 42
SECONDS EAST, A DISTANCE OF 234.73 FEET; THENCE SOUTH 87 DEGREES 33 MINUTES 02
SECONDS EAST, A DISTANCE OF 209.38 FEET TO A POINT OF CURVATURE; THENCE EASTERLY,
ALONG A CURVE, CONCAVE TO THE SOUTH, HAVING A RADIUS OF 805.00 FEET, AN ARC
DISTANCE OF 154.57 FEET, A CHORD BEARING SOUTH 82 DEGREES 02 MINUTES 59 SECONDS
EAST, AND A CHORD DISTANCE OF 154.33 FEET TO A POINT OF NON-TANGENCY; THENCE
NORTH 16 DEGREES 27 MINUTES 58 SECONDS EAST, A DISTANCE OF 121.11 FEET; THENCE
SOUTH 73 DEGREES 32 MINUTES 02 SECONDS EAST, A DISTANCE OF 185.18 FEET; THENCE
SOUTH 16 DEGREES 27 MINUTES 58 SECONDS WEST, A DISTANCE OF 10.00 FEET TO A POINT
ON THE BOUNDARY OF SAID LOT 555; THENCE ALONG SAID BOUNDARY FOR THE NEXT
EIGHTEEN (18) COURSES: (1) THENCE NORTH 73 DEGREES 32 MINUTES 02 SECONDS WEST, A
DISTANCE OF 175.18 FEET; (2) THENCE SOUTH 16 DEGREES 27 MINUTES 58 SECONDS WEST, A
DISTANCE OF 125.66 FEET TO A POINT ON A NON-TANGENT CURVE; (3) THENCE WESTERLY,
ALONG A CURVE, CONCAVE TO THE SOUTH, HAVING A RADIUS OF 790.00 FEET, AN ARC
DISTANCE OF 160.91 FEET, A CHORD BEARING NORTH 81 DEGREES 42 MINUTES 56 SECONDS
WEST, AND A CHORD DISTANCE OF 160.63 FEET TO A POINT OF TANGENCY; (4) THENCE
NORTH 87 DEGREES 33 MINUTES 02 SECONDS WEST, A DISTANCE OF 223.27 FEET TO A POINT
ON A NON-TANGENT CURVE; (5) THENCE NORTHERLY, ALONG A CURVE, CONCAVE TO THE
WEST, HAVING A RADIUS OF 540.00 FEET, AN ARC DISTANCE OF 25.25 FEET, A CHORD
BEARING NORTH 03 DEGREES 08 MINUTES 18 SECONDS WEST, AND A CHORD DISTANCE OF
25.25 FEET TO A POINT OF TANGENCY; (6) THENCE NORTH 04 DEGREES 28 MINUTES 42
SECONDS WEST, A DISTANCE OF 10.00 FEET TO A POINT OF CURVATURE; (7) THENCE
NORTHERLY, ALONG A CURVE, CONCAVE TO THE WEST, HAVING A RADIUS OF 840.00 FEET, AN
ARC DISTANCE OF 338.98 FEET, A CHORD BEARING NORTH 16 DEGREES 02 MINUTES 20
SECONDS WEST, AND A CHORD DISTANCE OF 336.68 FEET TO A POINT OF NON-TANGENCY;
THENCE NORTH 16 DEGREES 02 MINUTES 20 SECONDS EAST, A DISTANCE OF 165.22 FEET TO
A POINT OF CURVATURE; (8) THENCE NORTHEASTERLY, ALONG A CURVE, CONCAVE TO THE
SOUTHEAST, HAVING A RADIUS OF 360.00 FEET, AN ARC DISTANCE OF 26.16 FEET, A CHORD
BEARING NORTH 61 DEGREES 33 MINUTES 05 SECONDS EAST, AND A CHORD DISTANCE OF
26.15 FEET TO A POINT OF NON-TANGENCY; (9) THENCE SOUTH 26 DEGREES 09 MINUTES 56
SECONDS EAST, A DISTANCE OF 120.00 FEET; (10) THENCE NORTH 69 DEGREES 27 MINUTES
47 SECONDS EAST, A DISTANCE OF 47.08 FEET; (11) THENCE NORTH 80 DEGREES 43 MINUTES
12 SECONDS EAST, A DISTANCE OF 47.08 FEET; (12) THENCE NORTH 88 DEGREES 25 MINUTES
16 SECONDS EAST, A DISTANCE OF 50.20 FEET; (13) THENCE NORTH 88 DEGREES 38 MINUTES
25 SECONDS EAST, A DISTANCE OF 312.00 FEET; (14) THENCE NORTH 01 DEGREES 21
MINUTES 35 SECONDS WEST, A DISTANCE OF 121.61 FEET TO A POINT ON A NON-TANGENT
CURVE; (15) THENCE EASTERLY, ALONG A CURVE, CONCAVE TO THE NORTH, HAVING A RADIUS
OF 440.04 FEET, AN ARC DISTANCE OF 9.05 FEET, A CHORD BEARING NORTH 83 DEGREES 08
MINUTES 41 SECONDS EAST, AND A CHORD DISTANCE OF 9.05 FEET TO A POINT OF
NON-TANGENCY; (16) THENCE SOUTH 11 DEGREES 44 MINUTES 44 SECONDS EAST, A DISTANCE
OF 37.73 FEET TO A POINT OF CURVATURE; (17) THENCE SOUTHEASTERLY, ALONG A CURVE,
CONCAVE TO THE NORTH, HAVING A RADIUS OF 233.00 FEET, AN ARC DISTANCE OF
202.54 FEET, A CHORD BEARING SOUTH 36 DEGREES 38 MINUTES 55 SECONDS EAST, AND A
CHORD DISTANCE OF 196.22 FEET TO A POINT OF NON-TANGENCY; (18) THENCE SOUTH 28
DEGREES 26 MINUTES 55 SECONDS WEST, A DISTANCE OF 125.68 FEET TO THE POINT OF
BEGINNING.

EXCEPTING THEREFROM:

PART OF LOT 555 IN LINCOLN PRAIRIE BY DEL WEBB – PHASE 1A, AS DOCUMENT NUMBER
R2022–037215, DESCRIBED AS FOLLOWS: COMMENCING AT THE NORTHWEST CORNER OF LOT
117 IN SAID LINCOLN PRAIRIE BY DEL WEBB – PHASE 1A, THENCE SOUTH 26 DEGREES 09
MINUTES 56 SECONDS EAST, A DISTANCE OF 15.33 FEET; THENCE SOUTH 63 DEGREES 50
MINUTES 04 SECONDS WEST, A DISTANCE OF 15.00 FEET TO THE POINT OF BEGINNING;

THENCE SOUTH 26 DEGREES 09 MINUTES 56 SECONDS EAST, A DISTANCE OF 118.27 FEET;
THENCE NORTH 69 DEGREES 27 MINUTES 47 SECONDS EAST, A DISTANCE OF 59.19 FEET;
THENCE NORTH 80 DEGREES 43 MINUTES 12 SECONDS EAST, A DISTANCE OF 44.59 FEET;
THENCE NORTH 88 DEGREES 25 MINUTES 16 SECONDS EAST, A DISTANCE OF 49.16 FEET;
THENCE NORTH 88 DEGREES 38 MINUTES 25 SECONDS EAST, A DISTANCE OF 255.46 FEET;
THENCE SOUTH 63 DEGREES 11 MINUTES 20 SECONDS EAST, A DISTANCE OF 146.66 FEET;
THENCE SOUTH 34 DEGREES 57 MINUTES 38 SECONDS WEST, A DISTANCE OF 107.47 FEET;
THENCE SOUTH 90 DEGREES 00 MINUTES 00 SECONDS WEST, A DISTANCE OF 131.09 FEET;
THENCE SOUTH 45 DEGREES 00 MINUTES 00 SECONDS WEST, A DISTANCE OF 20.36 FEET;
THENCE SOUTH