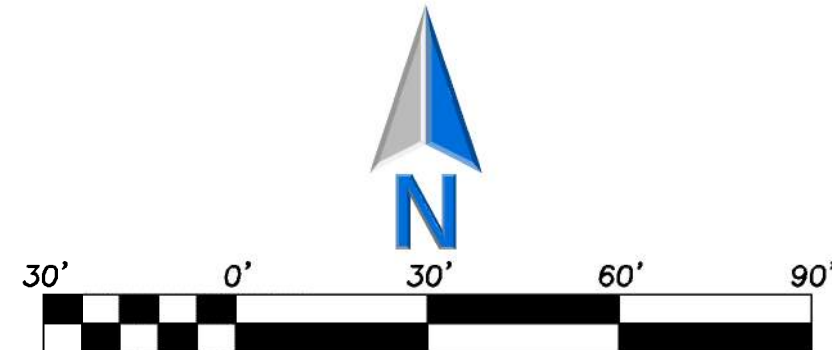
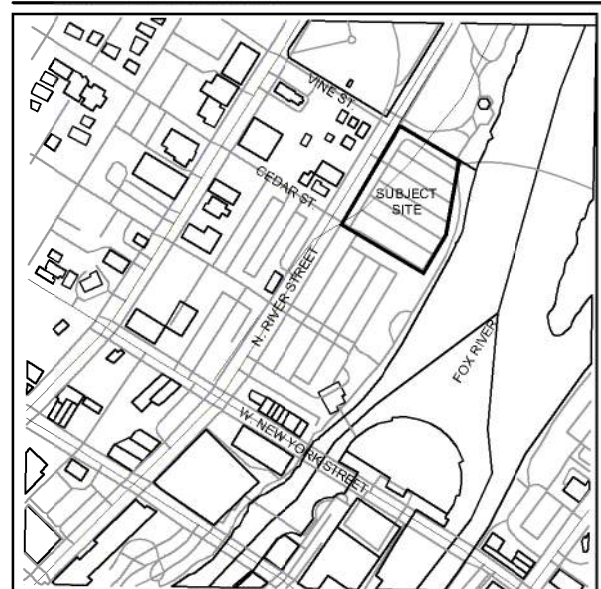


PACIFICA RIVERVIEW LANDSCAPE PLAN



Scale: 1" = 30'

LOCATION MAP



PLANT SCHEDULE

CANOPY TREES	CODE	BOTANICAL / COMMON NAME	COND.	SIZE	QTY.
GIN PR2		GINKGO BILOBA 'PRINCETON SENTRY' / PRINCETON SENTRY GINKGO	B & B	2.5" CAL.	6
GLE I18		GLEDITSIA TRIACANTHOS INERMIS 'SKYLINE' / THORNLESS SKYLINE HONEYLOCUST	B & B	2.5" CAL.	6
TIL RED		TILIA AMERICANA 'REDMOND' / REDMOND AMERICAN LINDEN	B & B	2.5" CAL.	1
UNDERSTORY TREES	CODE	BOTANICAL / COMMON NAME	COND.	SIZE	QTY.
AME GRA		AMELANCHIER X GRANDIFLORA 'AUTUMN BRILLIANCE' / AUTUMN BRILLIANCE APPLE SERVICEBERRY	B & B	8" CLUMP	3
CER CAN		CERCIS CANADENSIS / EASTERN REDBUD	B & B	2.5" CAL.	1
SYR IVO		SYRINGA RETICULATA 'IVORY SILK' / IVORY SILK JAPANESE TREE LILAC	B & B	2.5" CAL.	3
DECIDUOUS SHRUBS	CODE	BOTANICAL / COMMON NAME	COND.	SIZE	QTY.
ARO ARB		ARONIA ARBUTIFOLIA / RED CHOKEBERRY	B & B	30" HT.	3
CEA AME		CEANOTHUS AMERICANUS / NEW JERSEY TEA	B & B	30" HT.	6
RHU GRO		RHUS AROMATICA 'GRO-LOW' / GRO-LOW FRAGRANT SUMAC	CONT.	24" HT.	8
ROS FL3		ROSA X 'FLOWER CARPET CORAL' / ROSE	CONT.	24" SPREAD	22
SPI SPI		SPIRAEA JAPONICA 'LITTLE PRINCESS' / LITTLE PRINCESS JAPANESE SPIREA	CONT.	24" HT.	16
SYR BL2		SYRINGA X 'BLOOMERANG' / BLOOMERANG LILAC	B & B	30" HT.	17
VIB MUF		VIBURNUM DENTATUM 'BLUE MUFFIN' / SOUTHERN ARROWWOOD	B & B	30" HT.	16
VIB LUS		VIBURNUM DENTATUM 'CHICAGO LUSTER' / CHICAGO LUSTER ARROWWOOD	B & B	36" HT.	5
EVERGREEN SHRUBS	CODE	BOTANICAL / COMMON NAME	COND.	SIZE	QTY.
JUN COM		JUNIPERUS CHINENSIS 'PFITZERIANA COMPACTA' / COMPACTA PFITZER	B & B	24" HT.	23
JUN FOR		JUNIPERUS CHINENSIS 'SEA GREEN' / SEA GREEN JUNIPER	B & B	24" SPREAD	9
TAX DE4		TAXUS X MEDIA / DENSE YEW	B & B	30" HT.	18
THU SMA		THUJA OCCIDENTALIS 'SMARAGD' / EMERALD GREEN ARBORVITAE	B & B	48" HT.	3
GRASSES	CODE	BOTANICAL / COMMON NAME	COND.	SIZE	QTY.
CAL KAR		CALAMAGROSTIS X ACUTIFLORA 'KARL FOERSTER' / FEATHER REED GRASS	CONT.	#1	97
PAN HEA		PANICUM VIRGATUM 'HEAVY METAL' / HEAVY METAL SWITCH GRASS	CONT.	#1	24
SPO HET		SPOROBOLUS HETEROLEPIS / PRAIRIE DROPSOED	CONT.	#1	32
PERENNIALS	CODE	BOTANICAL / COMMON NAME	COND.	SIZE	QTY.
GAJ KOB		GAILLARDIA X GRANDIFLORA 'KOBOLD' / BLANKETFLOWER	CONT.	#1	48
HEM ORO		HEMEROCALLIS X 'STELLA DE ORO' / STELLA DE ORO DAYLILY	CONT.	#1	37
LEU DA2		LEUCANTHEMUM X SUPERBUM 'DAISY MAY' / SHASTA DAISY	CONT.	#1	30
NEP WAL		NEPETA X FAASSENII 'WALKERS LOW' / WALKERS LOW CATMINT	CONT.	#1	164
RUD GL2		RUDBECKIA FULGIDA 'GLODSTRUM' / BLACK-EYED SUSAN	CONT.	#1	55
SYM PUB		SYMPHYOTRICHUM NOVAE-ANGLIAE 'PURPLE DOME' / NEW ENGLAND ASTER	CONT.	#1	15
TURF GRASS	CODE	BOTANICAL / COMMON NAME	COND.	SIZE	QTY.
TUR SOD		TURF SOD / DROUGHT TOLERANT FESCUE BLEND	SOD	S.F.	7,039 SF

SITE MATERIALS SCHEDULE

MULCH	2,089 SF
STAMPED CONCRETE TYPE I	12,561 SF
STAMPED CONCRETE TYPE II	3,404 SF
ASPHALT	22,887 SF

Data For Landscape Material To Be Installed

Description	Count
Canopy Trees	13
Evergreen Trees	0
Understory Trees	7
Deciduous Shrubs	90
Evergreen Shrubs	51
Ornamental Grasses	146
Perennials	301
Annuals	0
Groundcover (S.F.)	0
Turf Grass (Seed S.F.)	0
Turf Grass (Sod S.F.)	6,890
Native Prairie (S.F.)	0
Native Wetland (S.F.)	0

Landscape Data Table: CTEs Provided

	CTE Value	Count Provided	Total CTEs Provided
Canopy Trees	1	13	13
Evergreen Trees	1/3	0	0
Understory Trees	1/3	7	2
Deciduous Shrubs	1/20	90	5
Evergreen Shrubs	1/20	51	3
Oversizing Credit			0
Total:		161	22

LANDSCAPE NOTES:

- PLANT QUANTITIES SHOWN IN THE PLANT SCHEDULE ARE FOR CONVENIENCE ONLY. THE CONTRACTOR IS RESPONSIBLE FOR PROVIDING AND INSTALLING ALL MATERIALS SHOWN ON THE PLAN AND SHOULD NOT RELY ON THE PLANT SCHEDULE FOR DETERMINING QUANTITIES.
- ALL PLANT MATERIALS SHALL BE NURSERY GROWN STOCK AND SHALL BE FREE FROM ANY DEFECTS, DISEASES OR INSECT DAMAGE. ANY MATERIALS WITH DAMAGED OR CROOKED/DISFIGURED LEADERS, BARK ABRASION, SUNSCALD, INSECT DAMAGE, ETC. ARE NOT ACCEPTABLE AND WILL BE REJECTED. TREES WITH MULTIPLE LEADERS WILL BE REJECTED UNLESS CALLED OUT IN THE PLANT SCHEDULE AS MULTI-STEM. NO PRUNING TO BE DONE AT THE TIME OF INSTALLATION EXCEPT FOR DEAD OR BROKEN LIMBS.
- ALL LANDSCAPE IMPROVEMENTS SHALL MEET MUNICIPALITY REQUIREMENTS AND GUIDELINES, WHICH SHALL BE VERIFIED BY MUNICIPAL AUTHORITIES.
- ALL PLANTING OPERATIONS SHALL BE COMPLETED IN ACCORDANCE WITH STANDARD HORTICULTURAL PRACTICES. THIS MAY INCLUDE, BUT NOT BE LIMITED TO, PROPER PLANTING BED AND TREE PIT PREPARATION, PLANTING MIX, PRUNING, STAKING AND GUYING, WRAPPING, SPRAYING, FERTILIZATION, PLANTING AND ADEQUATE MAINTENANCE OF MATERIALS DURING CONSTRUCTION ACTIVITIES.
- ALL PLANT MATERIALS SHALL BE INSPECTED AND APPROVED BY THE LANDSCAPE ARCHITECT PRIOR TO INSTALLATION. ANY MATERIALS INSTALLED WITHOUT APPROVAL MAY BE REJECTED.
- THE CONTRACTOR SHALL GUARANTEE PLANT MATERIALS FOR A PERIOD OF ONE YEAR FROM DATE OF ACCEPTANCE BY OWNER. THE CONTRACTOR SHALL OUTLINE PROPER MAINTENANCE PROCEDURES TO THE OWNER AT THE TIME OF ACCEPTANCE. DURING THE GUARANTEE PERIOD, DEAD OR DISGASED MATERIALS SHALL BE REPLACED AT NO COST TO THE OWNER. AT THE END OF THE GUARANTEE PERIOD THE CONTRACTOR SHALL OBTAIN FINAL ACCEPTANCE FROM THE OWNER.
- ANY EXISTING TREES TO BE RETAINED SHALL BE PROTECTED FROM SOIL COMPACTION AND OTHER DAMAGES THAT MAY OCCUR DURING CONSTRUCTION ACTIVITIES BY ERECTING FENCING AROUND SUCH MATERIALS AT A DISTANCE OF 8.5' FROM THE TRUNK.
- ALL GRASS, CLUMPS, OTHER VEGETATION, DEBRIS, STONES, ETC., SHALL BE RAKED OR OTHERWISE REMOVED FROM PLANTING AND LAWN AREAS PRIOR TO INITIATION OF INSTALLATION PROCEDURES.
- THE CONTRACTOR SHALL VERIFY THE LOCATIONS OF ALL UNDERGROUND UTILITIES PRIOR TO INITIATING PLANTING OPERATIONS. THE CONTRACTOR SHALL REPAIR/REPLACE AND UTILITY, PAVING, CURBING, ETC., WHICH IS DAMAGED DURING PLANTING OPERATIONS.
- SIZE AND GRADING STANDARDS OF PLANT MATERIALS SHALL CONFORM TO THE LATEST EDITION OF ANSI Z60.1, AMERICAN STANDARDS FOR NURSERY STOCK, BY THE AMERICAN NURSERY & LANDSCAPE ASSOCIATION.
- REFER TO PLAT OF SURVEY FOR LEGAL DESCRIPTION, BOUNDARY DIMENSIONS AND EXISTING CONDITIONS.
- ALL PLANT MATERIAL ON THIS PLANTING PLAN REPRESENTS THE INTENTION AND INTENSITY OF THE PROPOSED LANDSCAPE MATERIAL. THE EXACT SPECIES AND LOCATIONS MAY VARY IN THE FIELD DUE TO MODIFICATIONS IN THE SITE IMPROVEMENTS AND THE AVAILABILITY OF PLANT MATERIAL AT THE TIME OF INSTALLATION. ANY SUCH CHANGES MUST FIRST BE APPROVED BY THE CITY IN WRITING.
- ALL PLANT MATERIAL SHALL BE PLANTED WITH A MINIMUM OF SIX INCHES OF ORGANIC SOIL AND MULCHED WITH A SHREDDED BARK MATERIAL TO A MINIMUM 3" DEPTH.
- ALL BEDS SHALL BE EDGED, HAVE WEED PREEMERGENTS APPLIED AT THE

RECOMMENDED RATE:

- ALL PARKWAYS SHALL HAVE LAWN ESTABLISHED WITH SEED A GROUNDCOVER, UNLESS OTHERWISE NOTED.
- ALL PLANTINGS SHALL BE SPACED EQUAL DISTANT, BACK FILLED WITH AMENDED SOIL IN A HOLE TWICE THE ROOTBALL DIAMETER, WATERED, FERTILIZED, PRUNED, AND HAVE ALL TAGS AND ROPES REMOVED.
- LAWN AND BED AREAS SHALL BE ROTOTILLED, RAKED OF CLUMPS AND DEBRIS.
- REMOVE ALL DEAD AND DISEASED PLANT MATERIAL FROM SITE AND DISPOSE OF PROPERLY.
- PLANTS TO BE PLANTED SO THAT ROOT FLARE IS AT THE GRADE OF THE AREA WHERE PLANTED. NO PRUNING TO BE DONE AT THE TIME OF INSTALLATION EXCEPT TO REMOVE DEAD OR BROKEN LIMBS.
- CONTRACTORS MUST VERIFY ALL QUANTITIES AND OBTAIN ALL PROPER PERMITS AND LICENSES FROM THE PROPER AUTHORITIES.
- ALL MATERIAL MUST MEET INDUSTRY STANDARDS AND THE LANDSCAPE ARCHITECT HAS THE RIGHT TO REFUSE ANY POOR MATERIAL OR WORKMANSHIP.



**ERIKSSON
ENGINEERING
ASSOCIATES, LTD.**

LANDSCAPE ARCHITECTS
145 COMMERCE DRIVE, SUITE A
GRAYSLAKE, ILLINOIS 60030
PHONE (847) 223-4804
FAX (847) 223-4864
EMAIL INFO@EEA-LTD.COM
PROFESSIONAL DESIGN FIRM
LICENSE NO. 184-003220
EXPIRES: 04/30/2023

PACIFICA RIVERVIEW

309 N. RIVER STREET
AURORA, ILLINOIS

Reserved for Seal:



No.	Date	Description

DESIGN BY: SSG APPROVED BY: XXX DATE: 03/27/2023

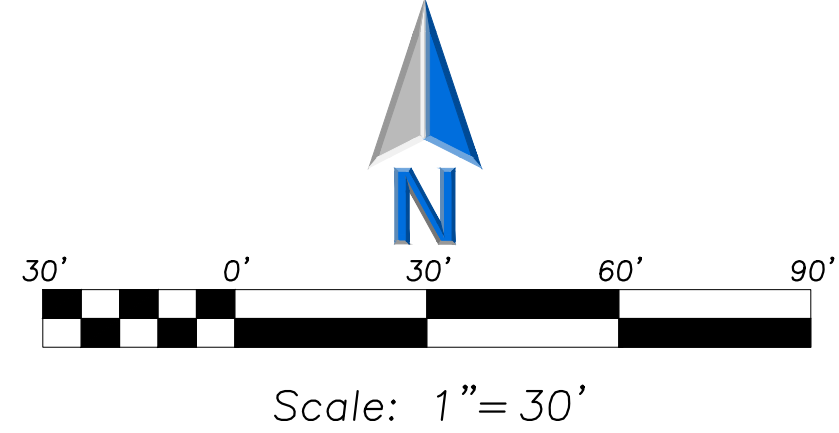
Sheet Title:

LANDSCAPE
PLAN

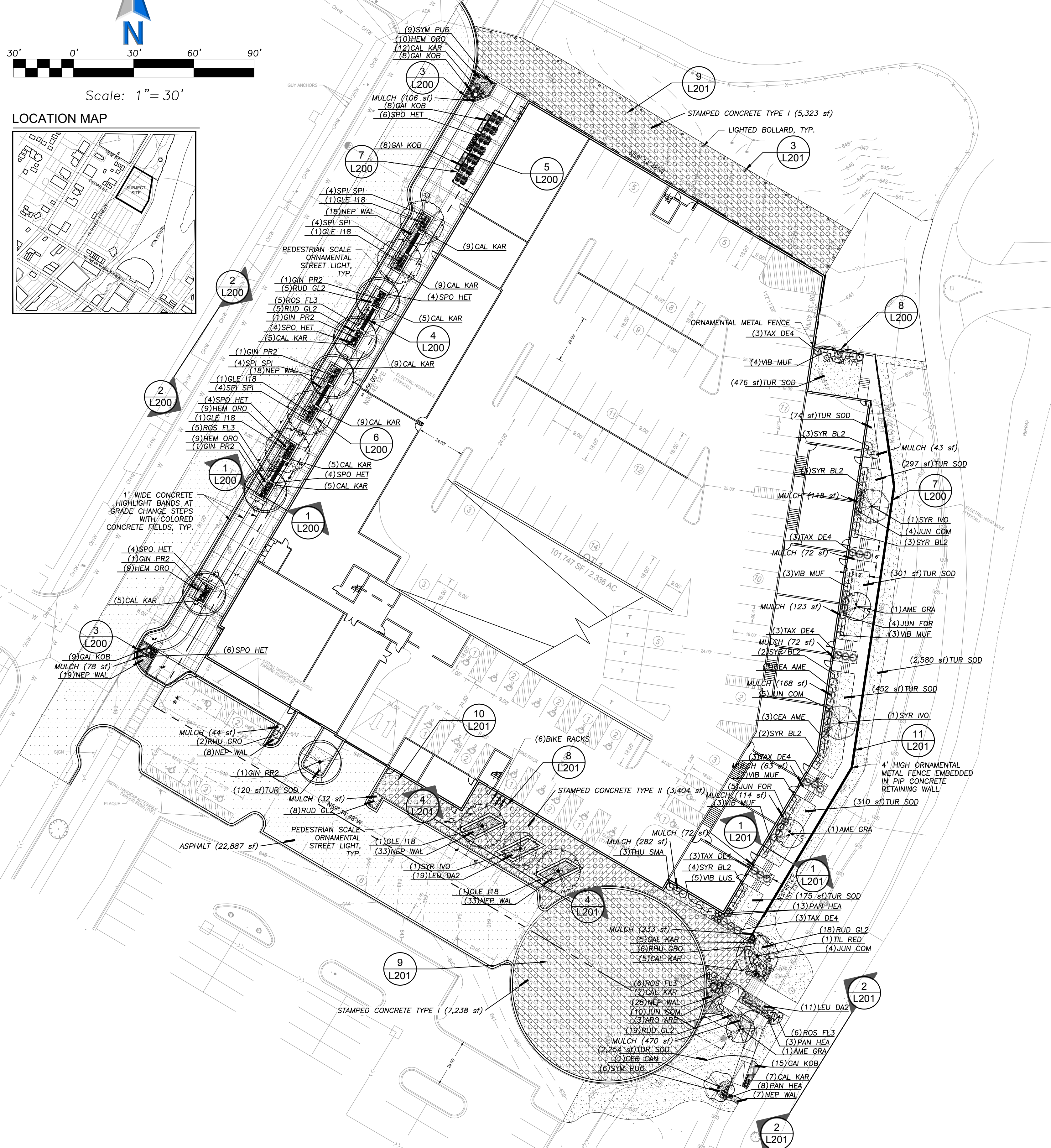
Sheet No:

L100

PACIFICA RIVERVIEW LANDSCAPE PLAN



LOCATION MAP



LANDSCAPE NOTES:

- PLANT QUANTITIES SHOWN IN THE PLANT SCHEDULE ARE FOR CONVENIENCE ONLY. THE CONTRACTOR IS RESPONSIBLE FOR PROVIDING AND INSTALLING ALL MATERIALS SHOWN ON THE PLAN AND SHOULD NOT RELY ON THE PLANT SCHEDULE FOR DETERMINING QUANTITIES.
- ALL PLANT MATERIALS SHALL BE NURSERY GROWN STOCK AND SHALL BE FREE FROM ANY DEFORMITIES, DISEASES OR INSECT DAMAGE. ANY MATERIALS WITH DAMAGED OR CROOKED/DISFIGURED LEADERS, BARK ABRASION, SUNSCOLD, INSECT DAMAGE, ETC. ARE NOT ACCEPTABLE AND WILL BE REJECTED. TREES WITH MULTIPLE LEADERS WILL BE REJECTED UNLESS CALLED OUT IN THE PLANT SCHEDULE AS MULTI-STEM. NO PRUNING TO BE DONE AT THE TIME OF INSTALLATION EXCEPT FOR DEAD OR BROKEN LIMBS.
- ALL LANDSCAPE IMPROVEMENTS SHALL MEET MUNICIPALITY REQUIREMENTS AND GUIDELINES, WHICH SHALL BE VERIFIED BY MUNICIPAL AUTHORITIES.
- ALL PLANTING OPERATIONS SHALL BE COMPLETED IN ACCORDANCE WITH STANDARD HORTICULTURAL PRACTICES. THIS MAY INCLUDE, BUT NOT BE LIMITED TO, PROPER PLANTING BED AND TREE PIT PREPARATION, PLANTING MIX, PRUNING, STAKING AND GUYING, WRAPPING, SPRAYING, FERTILIZATION, PLANTING AND ADEQUATE MAINTENANCE OF MATERIALS DURING CONSTRUCTION ACTIVITIES.
- ALL PLANT MATERIALS SHALL BE INSPECTED AND APPROVED BY THE LANDSCAPE ARCHITECT PRIOR TO INSTALLATION. ANY MATERIALS INSTALLED WITHOUT APPROVAL MAY BE REJECTED.
- THE CONTRACTOR SHALL GUARANTEE PLANT MATERIALS FOR A PERIOD OF ONE YEAR FROM DATE OF ACCEPTANCE BY OWNER. THE CONTRACTOR SHALL OUTLINE PROPER MAINTENANCE PROCEDURES TO THE OWNER AT THE TIME OF ACCEPTANCE. DURING THE GUARANTEE PERIOD, DEAD OR DISEASED MATERIALS SHALL BE REPLACED AT NO COST TO THE OWNER. AT THE END OF THE GUARANTEE PERIOD THE CONTRACTOR SHALL OBTAIN FINAL ACCEPTANCE FROM THE OWNER.
- ANY EXISTING TREES TO BE RETAINED SHALL BE PROTECTED FROM SOIL COMPACTION AND OTHER DAMAGES THAT MAY OCCUR DURING CONSTRUCTION ACTIVITIES BY ERECTING FENCING AROUND SUCH MATERIALS AT A DISTANCE OF 8.5' FROM THE TRUNK.
- ALL GRASS, CLUMPS, OTHER VEGETATION, DEBRIS, STONES, ETC., SHALL BE RAKED OR OTHERWISE REMOVED FROM PLANTING AND LAWN AREAS PRIOR TO INITIATION OF INSTALLATION PROCEDURES.
- THE CONTRACTOR SHALL VERIFY THE LOCATIONS OF ALL UNDERGROUND UTILITIES PRIOR TO INITIATING PLANTING OPERATIONS. THE CONTRACTOR SHALL REPAIR/REPLACE AND UTILITY, PAVING, CURBING, ETC., WHICH IS DAMAGED DURING PLANTING OPERATIONS.
- SIZE AND GRADING STANDARDS OF PLANT MATERIALS SHALL CONFORM TO THE LATEST EDITION OF ANSI Z60.1, AMERICAN STANDARDS FOR NURSERY STOCK, BY THE AMERICAN NURSERY & LANDSCAPE ASSOCIATION.
- REFER TO PLAT OF SURVEY FOR LEGAL DESCRIPTION, BOUNDARY DIMENSIONS AND EXISTING CONDITIONS.
- ALL PLANT MATERIAL ON THIS PLANTING PLAN REPRESENTS THE INTENTION AND INTENSITY OF THE PROPOSED LANDSCAPE MATERIAL. THE EXACT SPECIES AND LOCATIONS MAY VARY IN THE FIELD DUE TO MODIFICATIONS IN THE SITE IMPROVEMENTS AND THE AVAILABILITY OF PLANT MATERIAL AT THE TIME OF INSTALLATION. ANY SUCH CHANGES MUST FIRST BE APPROVED BY THE CITY IN WRITING.
- ALL PLANT MATERIAL SHALL BE PLANTED WITH A MINIMUM OF SIX INCHES OF SOIL. MULCHING AND OTHER DAMAGES THAT MAY OCCUR DURING CONSTRUCTION ACTIVITIES BY ERECTING FENCING AROUND SUCH MATERIALS AT A DISTANCE OF 8.5' FROM THE TRUNK.
- ALL BEDS SHALL BE EDGED, HAVE WEED PREEMERGENTS APPLIED AT THE

UTILITIES PRIOR TO INITIATING PLANTING OPERATIONS. THE CONTRACTOR SHALL REPAIR/REPLACE AND UTILITY, PAVING, CURBING, ETC., WHICH IS DAMAGED DURING PLANTING OPERATIONS.

SIZE AND GRADING STANDARDS OF PLANT MATERIALS SHALL CONFORM TO THE LATEST EDITION OF ANSI Z60.1, AMERICAN STANDARDS FOR NURSERY STOCK, BY THE AMERICAN NURSERY & LANDSCAPE ASSOCIATION.

REFER TO PLAT OF SURVEY FOR LEGAL DESCRIPTION, BOUNDARY DIMENSIONS AND EXISTING CONDITIONS.

ALL PLANT MATERIAL ON THIS PLANTING PLAN REPRESENTS THE INTENTION AND INTENSITY OF THE PROPOSED LANDSCAPE MATERIAL. THE EXACT SPECIES AND LOCATIONS MAY VARY IN THE FIELD DUE TO MODIFICATIONS IN THE SITE IMPROVEMENTS AND THE AVAILABILITY OF PLANT MATERIAL AT THE TIME OF INSTALLATION. ANY SUCH CHANGES MUST FIRST BE APPROVED BY THE CITY IN WRITING.

ALL PLANT MATERIAL SHALL BE PLANTED WITH A MINIMUM OF SIX INCHES OF SOIL. MULCHING AND OTHER DAMAGES THAT MAY OCCUR DURING CONSTRUCTION ACTIVITIES BY ERECTING FENCING AROUND SUCH MATERIALS AT A DISTANCE OF 8.5' FROM THE TRUNK.

ALL BEDS SHALL BE EDGED, HAVE WEED PREEMERGENTS APPLIED AT THE

RECOMMENDED RATE.

15. ALL PARKWAYS SHALL HAVE LAWN ESTABLISHED WITH SEED A GROUNDCOVER, UNLESS OTHERWISE NOTED.

16. ALL LAWN AREAS ON THIS PLAN SHALL BE GRADED SMOOTH AND TOPPED WITH AT LEAST 2" OF TOPSOIL. ALL LAWN AREAS TO BE ESTABLISHED USING SEED BLANKET UNLESS OTHERWISE NOTED. BLANKET TO BE S75 OR APPROVED EQUAL.

17. THIS LANDSCAPE PLAN ASSUMES THE SITE WILL BE PREPARED WITH TOP SOIL SUITABLE FOR THE ESTABLISHMENT OF THE LANDSCAPE MATERIAL. PRESENTED ON THIS PLAN, IF ADDITIONAL TOP SOIL IS REQUIRED IT IS UP TO THE LANDSCAPE CONTRACTOR ON THE PROJECT TO PROVIDE, SPREAD AND PREPARE THE SITE AS NEEDED FOR THE IMPLEMENTATION OF THIS LANDSCAPE PLAN.

18. CONTRACTORS MUST VERIFY ALL QUANTITIES AND OBTAIN ALL PROPER PERMITS AND LICENSES FROM THE PROPER AUTHORITIES.

19. ALL MATERIAL MUST MEET INDUSTRY STANDARDS AND THE LANDSCAPE ARCHITECT HAS THE RIGHT TO REFUSE ANY POOR MATERIAL OR WORKMANSHIP.

PLANT SCHEDULE

CANOPY TREES	CODE	BOTANICAL / COMMON NAME	COND	SIZE	QTY
	GIN PR2	GINKGO BILOBA 'PRINCETON SENTRY' / PRINCETON SENTRY GINKGO	B & B	2.5" CAL.	6
	GLE 118	GLEDITSIA TRIACANTHOS INERMIS 'SKYLINE' / THORNLESS SKYLINE HONEYLOCUST	B & B	2.5" CAL.	6
	TIL RED	TILIA AMERICANA 'REDMOND' / REDMOND AMERICAN LINDEN	B & B	2.5" CAL.	1
UNDERSTORY TREES	CODE	BOTANICAL / COMMON NAME	COND	SIZE	QTY
	AME GRA	AMELANCHIER X GRANDIFLORA 'AUTUMN BRILLIANCE' / AUTUMN BRILLIANCE APPLE SERVICEBERRY	B & B	8" CLUMP	3
	CER CAN	CERCIS CANADENSIS / EASTERN REDBUD	B & B	2.5" CAL.	1
	SYR IVO	SYRINGA RETICULATA 'IVORY SILK' / IVORY SILK JAPANESE TREE LILAC	B & B	2.5" CAL.	3
DECIDUOUS SHRUBS	CODE	BOTANICAL / COMMON NAME	COND	SIZE	QTY
	ARO ARB	ARONIA ARBUTIFOLIA / RED CHOKEBERRY	B & B	30" HT.	3
	CEA AME	CEANOTHUS AMERICANUS / NEW JERSEY TEA	B & B	30" HT.	6
	RHU GRO	RHUS AROMATICA 'GRO-Low' / GRO-Low FRAGRANT SUMAC	CONT.	24" HT.	8
	ROS FL3	ROSA X 'FLOWER CARPET CORAL' / ROSE	CONT.	24" SPREAD	22
	SPI SPI	SPIRAEA JAPONICA 'LITTLE PRINCESS' / LITTLE PRINCESS JAPANESE SPIREA	CONT.	24" HT.	16
	SYR BL2	SYRINGA X 'BLOOMERANG' / BLOOMERANG LILAC	B & B	30" HT.	17
	VIB MUF	VIBURNUM DENTATUM 'BLUE MUFFIN' / SOUTHERN ARROWWOOD	B & B	30" HT.	16
	VIB LUS	VIBURNUM DENTATUM 'CHICAGO LUSTER' / CHICAGO LUSTER ARROWWOOD	B & B	36" HT.	5
EVERGREEN SHRUBS	CODE	BOTANICAL / COMMON NAME	COND	SIZE	QTY
	JUN COM	JUNIPERUS CHINENSIS 'PFITZERIANA COMPACTA' / COMPACTA PFITZER	B & B	24" HT.	23
	JUN FOR	JUNIPERUS CHINENSIS 'SEA GREEN' / SEA GREEN JUNIPER	B & B	24" SPREAD	9
	TAX DE4	TAXUS X MEDIA / DENSE YEW	B & B	30" HT.	18
	THU SMA	THUJA OCCIDENTALIS 'SMARAGD' / EMERALD GREEN ARBORVITAE	B & B	48" HT.	3
GRASSES	CODE	BOTANICAL / COMMON NAME	COND	SIZE	QTY
	CAL KAR	CALAMAGROSTIS X ACUTIFLORA 'KARL FOERSTER' / FEATHER REED GRASS	CONT.	#1	97
	PAN HEA	PANICUM VIRGATUM 'HEAVY METAL' / HEAVY METAL SWITCH GRASS	CONT.	#1	24
	SPO HET	SPOROBOLUS HETEROLEPIS / PRAIRIE DROPSIDE	CONT.	#1	32
PERENIALS	CODE	BOTANICAL / COMMON NAME	COND	SIZE	QTY
	GAI KOB	GAILLARDIA X GRANDIFLORA 'KOBOLD' / BLANKETFLOWER	CONT.	#1	48
	HEM ORO	HEMEROCALLIS X 'STELLA DE ORO' / STELLA DE ORO DAYLILY	CONT.	#1	37
	LEU DA2	LEUCANTHEMUM X SUPERBUM 'DAISY MAY' / SHASTA DAISY	CONT.	#1	30
	NEP WAL	NEPETA X FAASSENII 'WALKERS LOW' / WALKERS LOW CATMINT	CONT.	#1	164
	RUD GL2	RUDEBECKIA FULGIDA 'GLODSTRUM' / BLACK-EYED SUSAN	CONT.	#1	55
	SYM PUB	SYMPHYOTRICHUM NOVAE-ANGLIAE 'PURPLE DOME' / NEW ENGLAND ASTER	CONT.	#1	15
TURF GRASS	CODE	BOTANICAL / COMMON NAME	COND	SIZE	QTY
	TUR SOD	TURF SOD / DROUGHT TOLERANT FESCUE BLEND	SOD	S.F.	7,039 SF

SITE MATERIALS SCHEDULE

MULCH	2,089 SF
STAMPED CONCRETE TYPE I	12,561 SF
STAMPED CONCRETE TYPE II	3,404 SF
ASPHALT	22,887 SF

Data For Landscape Material To Be Installed

Description	Count
Canopy Trees	13
Evergreen Trees	0
Understory Trees	7
Deciduous Shrubs	90
Evergreen Shrubs	51
Ornamental Grasses	146
Perennials	301
Annuals	0
Groundcover (S.F.)	0
Turf Grass (Seed S.F.)	0
Turf Grass (Sod S.F.)	6,880
Native Prairie (S.F.)	0
Native Wetland (S.F.)	0

Landscape Data Table: CTEs Provided

	CTE Value	Count Provided	Total CTEs Provided
Canopy Trees	1	13	13
Evergreen Trees	1/3	0	0
Understory Trees	1/3	7	2
Deciduous Shrubs	1/20	90	5
Evergreen Shrubs	1/20	51	3
Oversizing Credit			0
Total:		161	22



ERIKSSON
ENGINEERING
ASSOCIATES, LTD.

LANDSCAPE ARCHITECTS
145 COMMERCE DRIVE, SUITE A
GRAYSLAKE, ILLINOIS 60030
PHONE (847) 223-4804
FAX (847) 223-4864
EMAIL INFO@EEA-LTD.COM
PROFESSIONAL DESIGN FIRM
LICENSE NO. 184-003220
EXPIRES: 04/30/2023

PACIFICA RIVERVIEW

309 N. RIVER STREET
AURORA, ILLINOIS

Reserved for Seal:



Expiration: 08/31/2023

No.	Date	Description

© ERIKSSON ENGINEERING ASSOCIATES, LTD., 2023
THIS PLAN & DESIGN ARE THE PROPERTY OF ERIKSSON ENGINEERING ASSOCIATES, LTD.
NO REPRODUCTION OF ANY PART OF THESE PLANS IS PERMITTED WITHOUT THE WRITTEN
CONSENT OF ERIKSSON ENGINEERING ASSOCIATES, LTD.

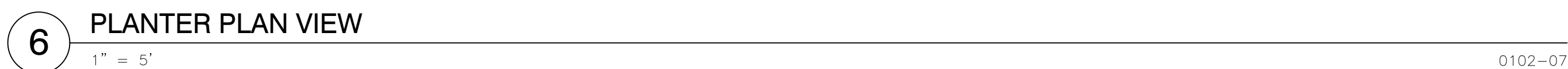
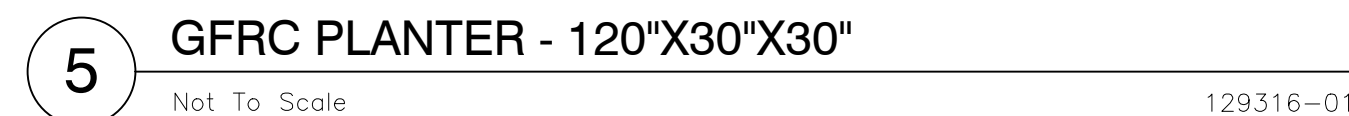
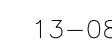
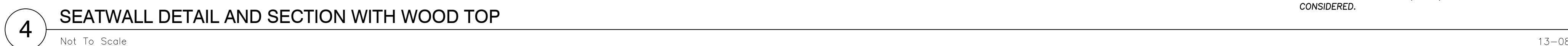
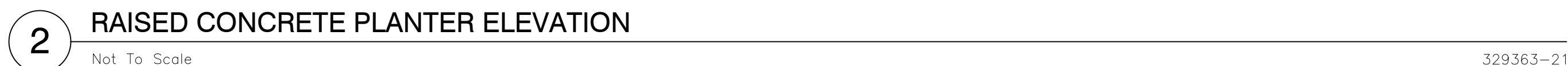
Design By: SSG Approved By: XXX Date: 03/27/2023

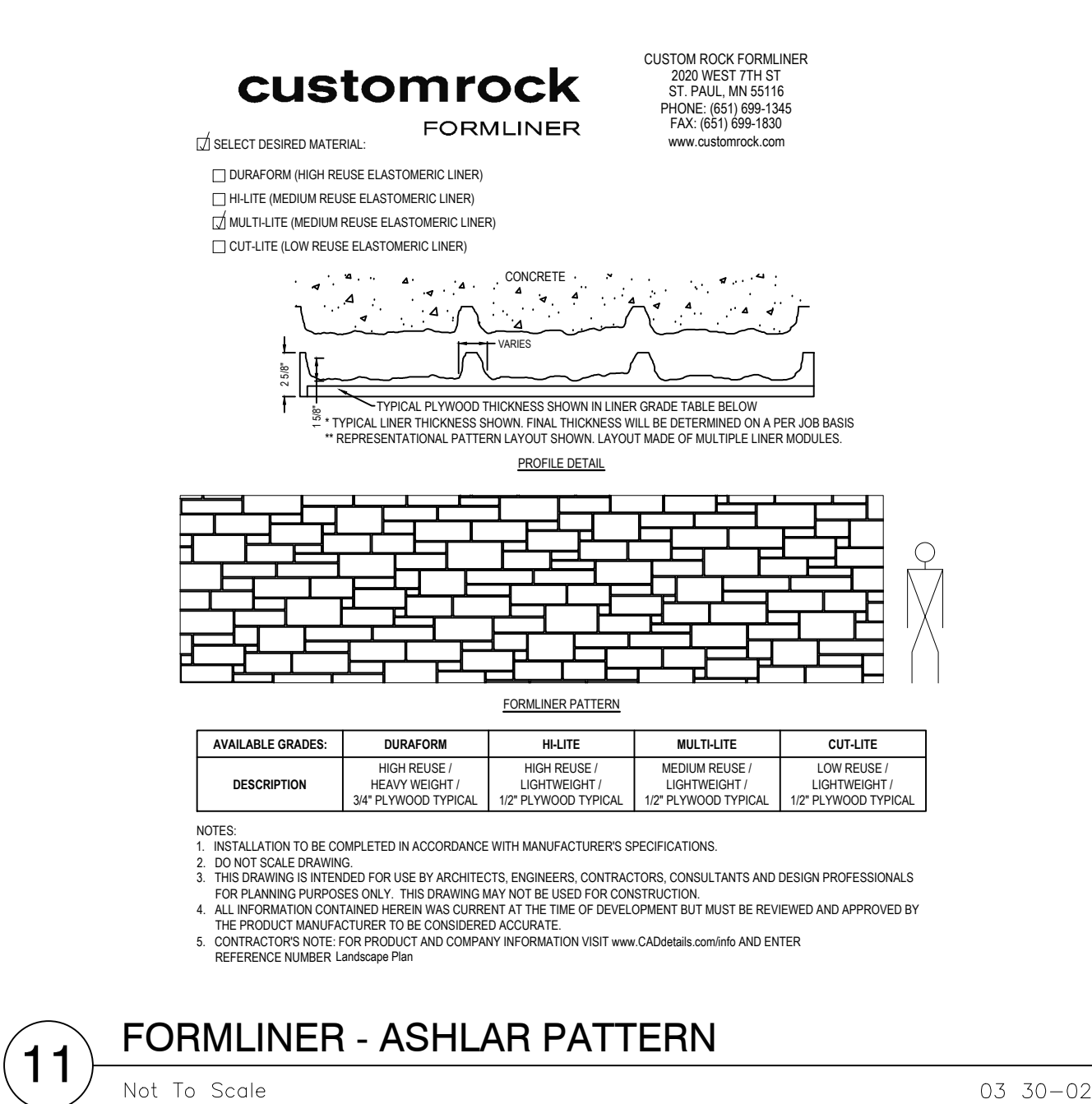
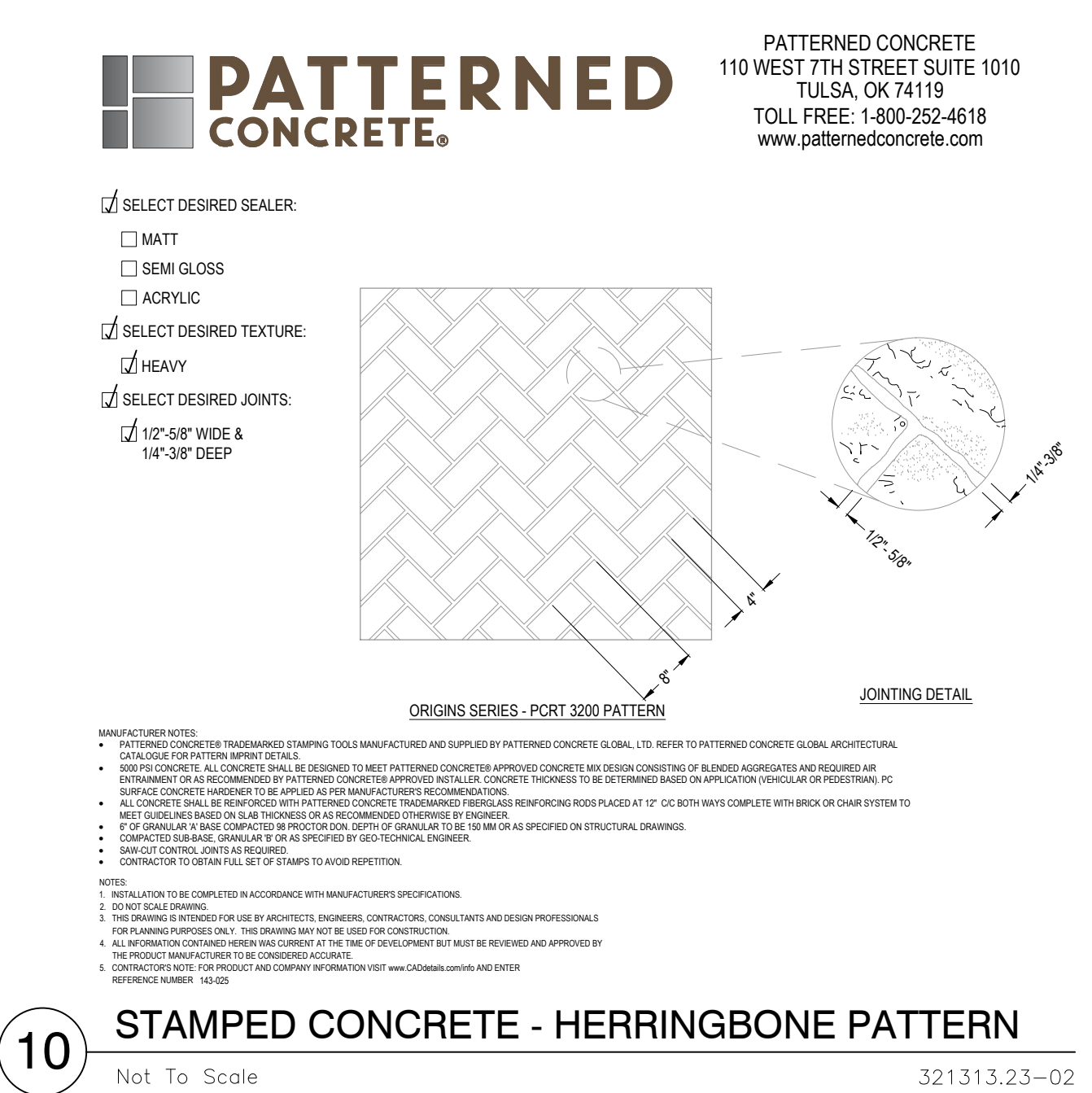
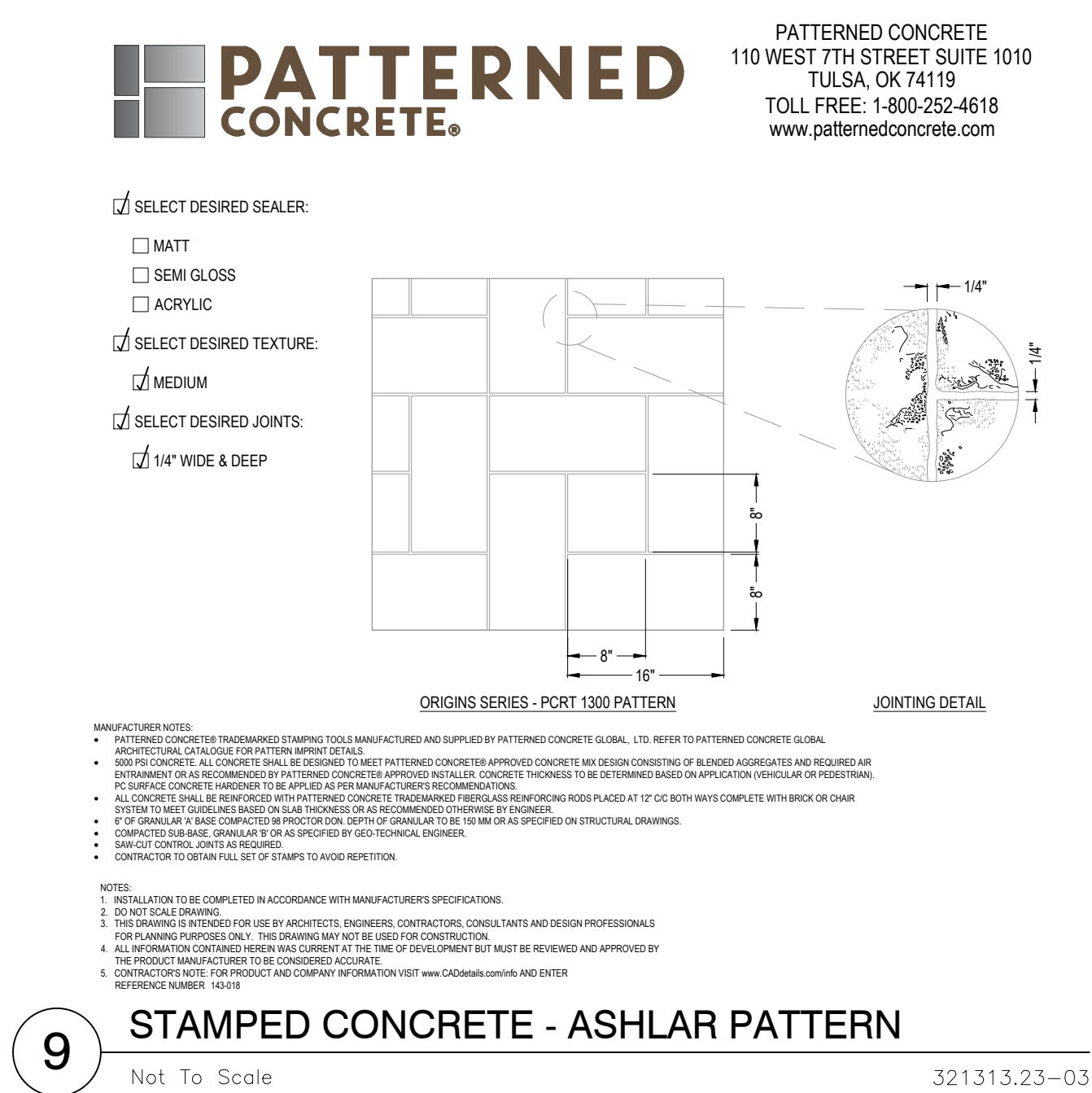
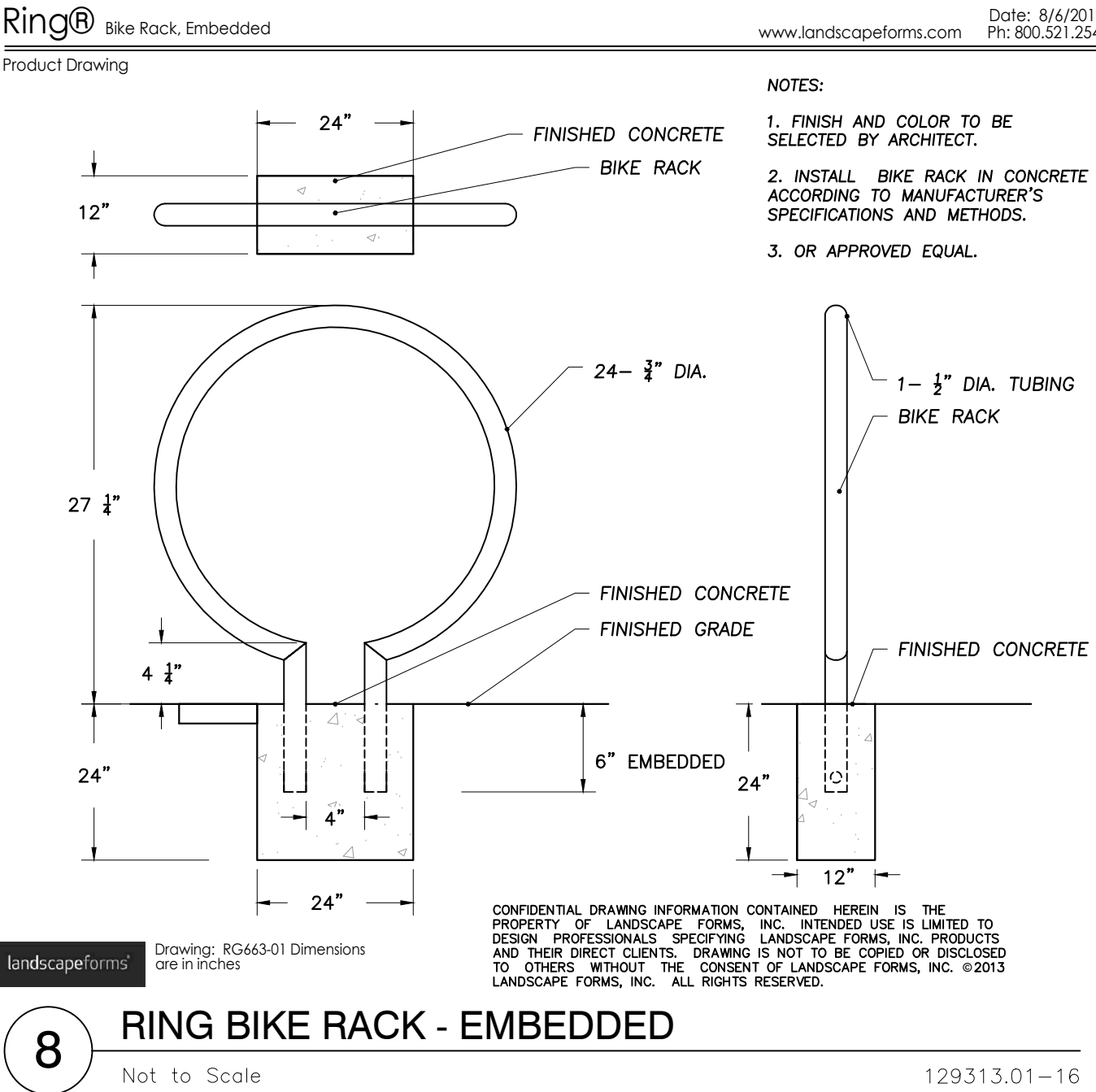
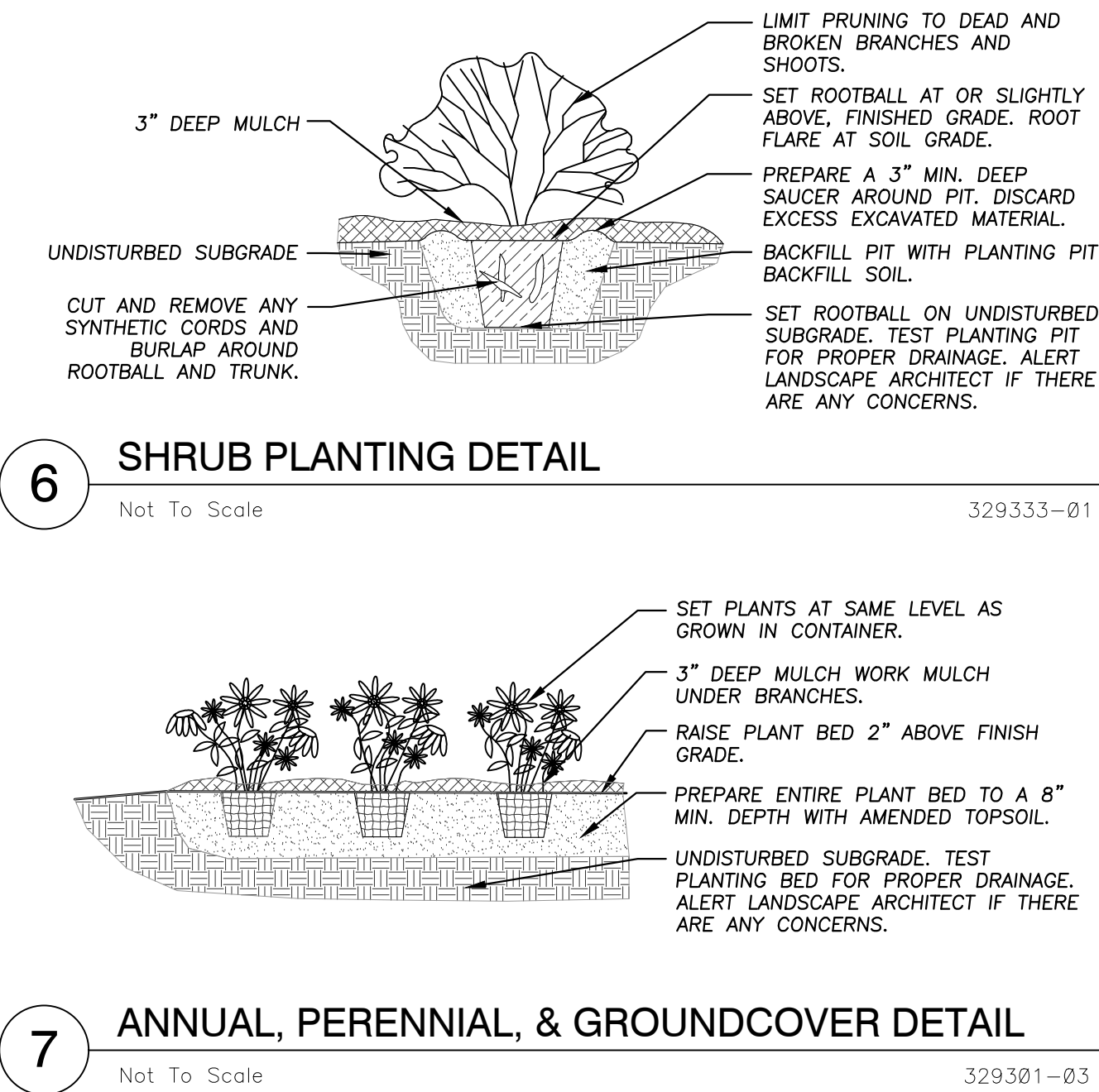
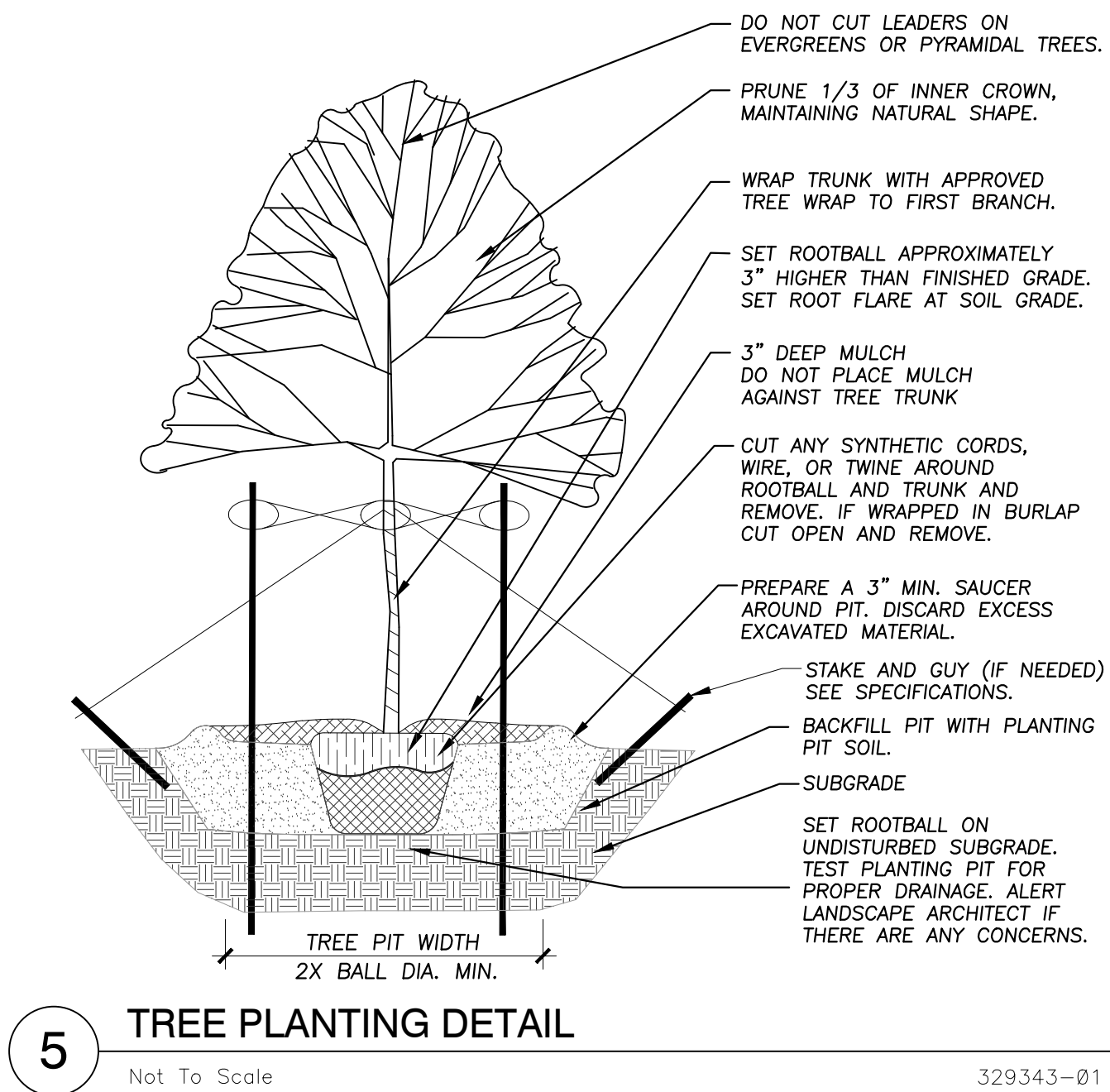
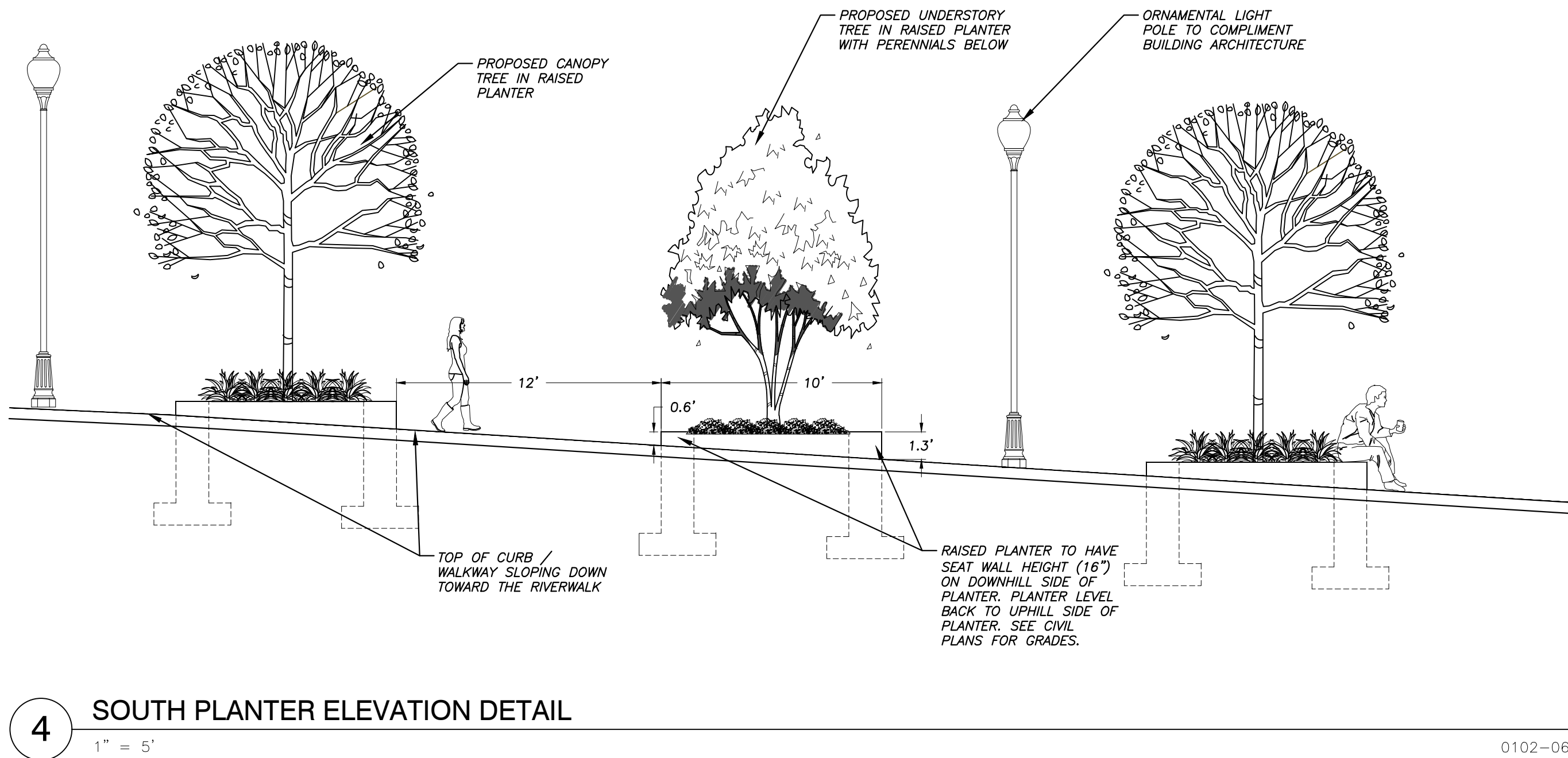
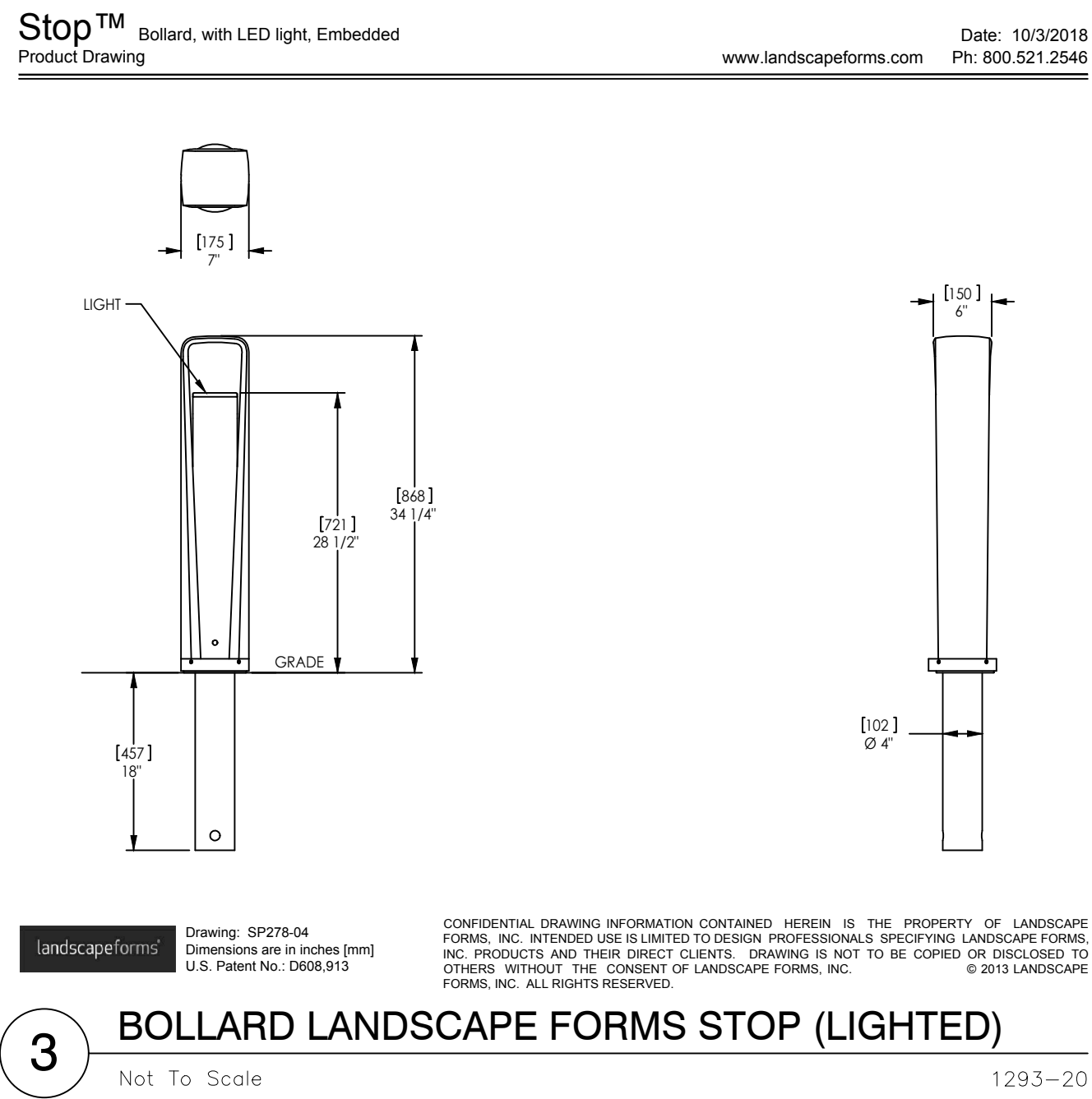
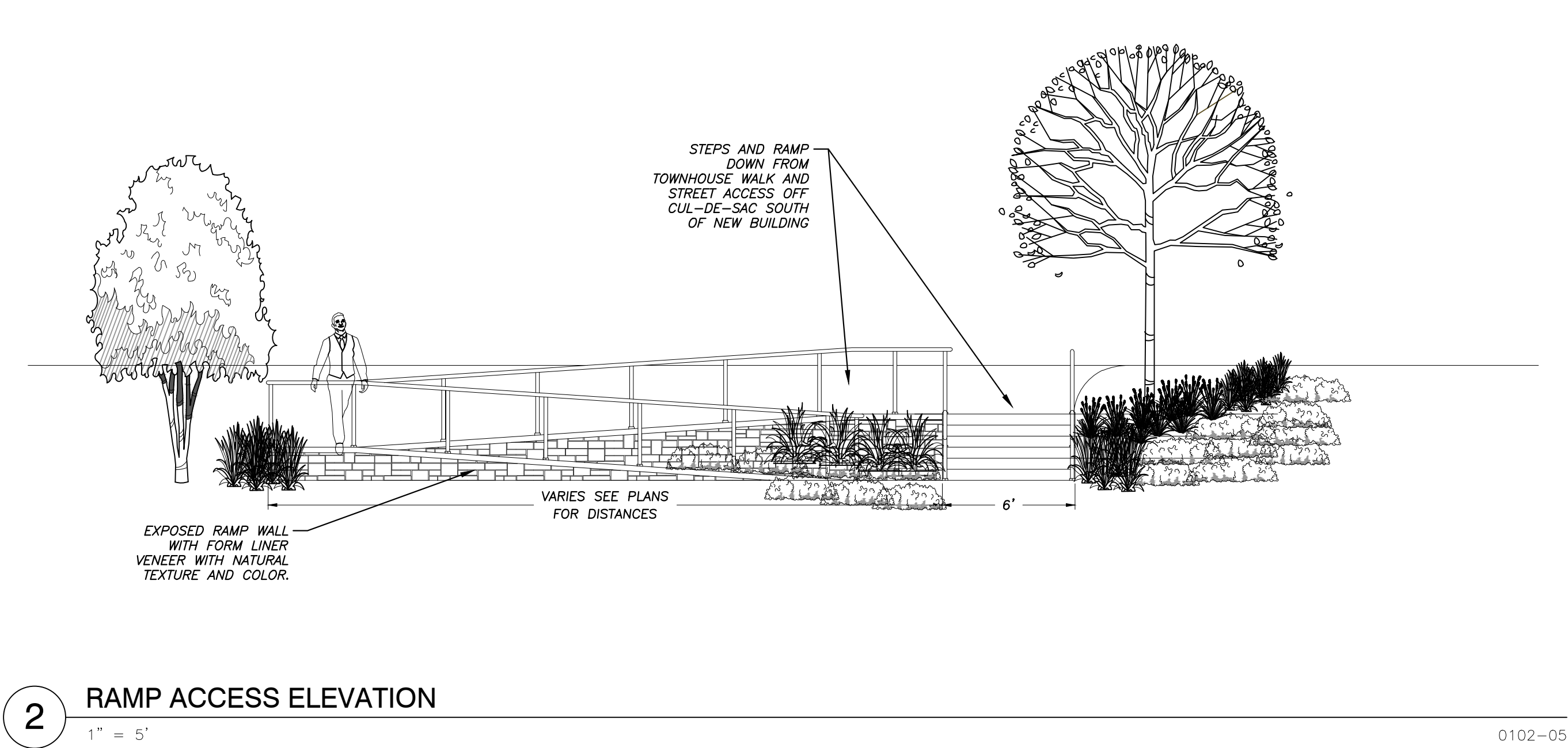
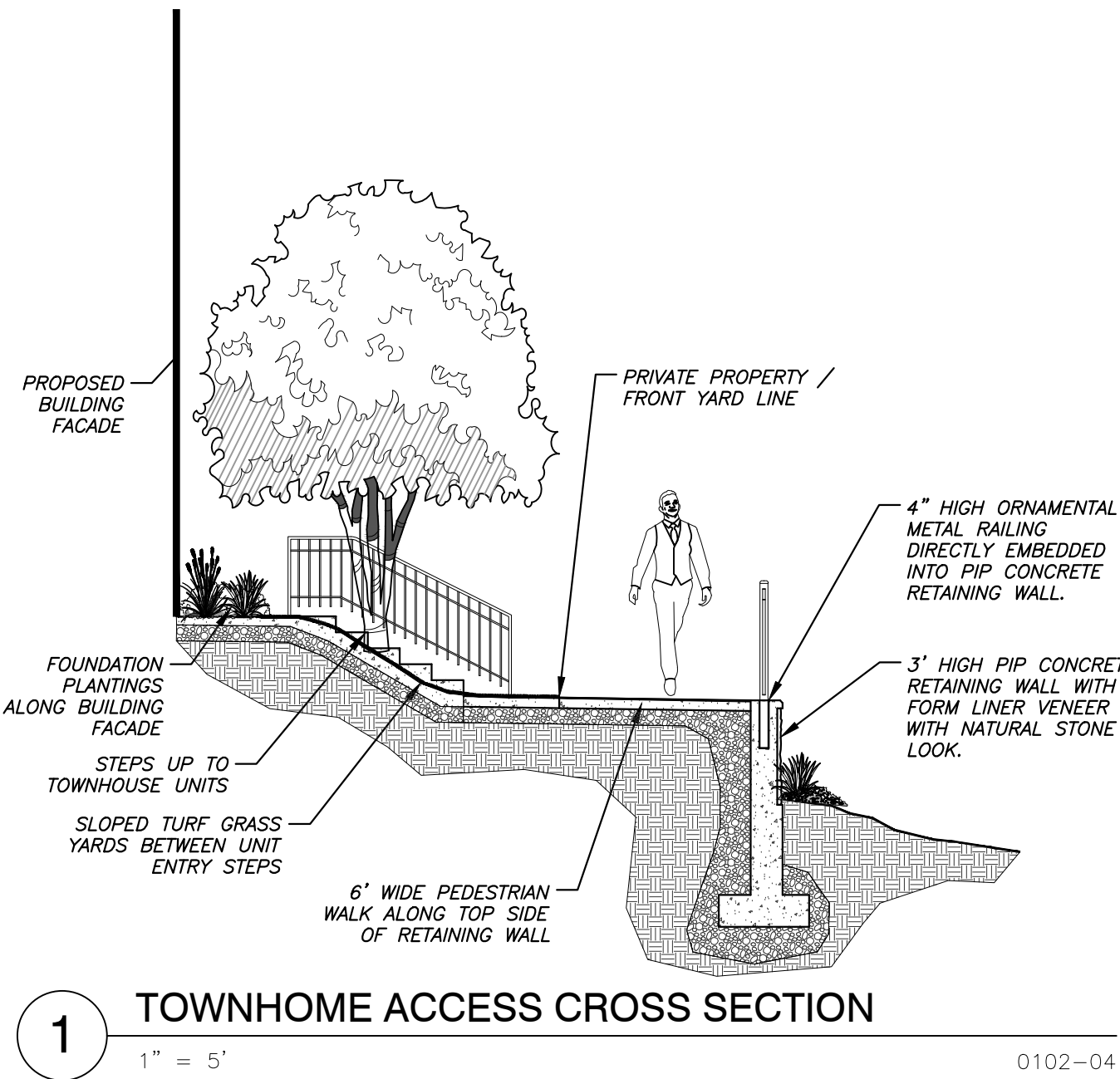
Sheet Title:

LANDSCAPE
PLAN

Sheet No:

L100





ERIKSSON
ENGINEERING
ASSOCIATES, LTD.

LANDSCAPE ARCHITECTS
145 COMMERCE DRIVE, SUITE A
GRAYSLAKE, ILLINOIS 60030
PHONE (847) 223-4804
FAX (847) 223-4864
EMAIL INFO@EEA-LLD.COM
PROFESSIONAL DESIGN FIRM
LICENSE NO. 184-003220
EXPIRES: 04/30/2023

PACIFICA RIVERVIEW

309 N. RIVER STREET
AURORA, ILLINOIS

Reserved for Seal:



No.	Date	Description

© ERIKSSON ENGINEERING ASSOCIATES, LTD., 2023
THIS PLAN & DESIGN ARE THE PROPERTY OF ERIKSSON ENGINEERING ASSOCIATES, LTD.
NO REPRODUCTION OR PARTIAL OR WHOLE REUSE IS PERMITTED WITHOUT THE WRITTEN
CONSENT OF ERIKSSON ENGINEERING ASSOCIATES, LTD.

Design By: SSG Approved By: XXX Date: 03/27/2023

Sheet Title:

LANDSCAPE
DETAILS

Sheet No:

L201