

Preliminary Landscape Plan

WHEATLAND CROSSING

Aurora, Illinois

December 14, 2023

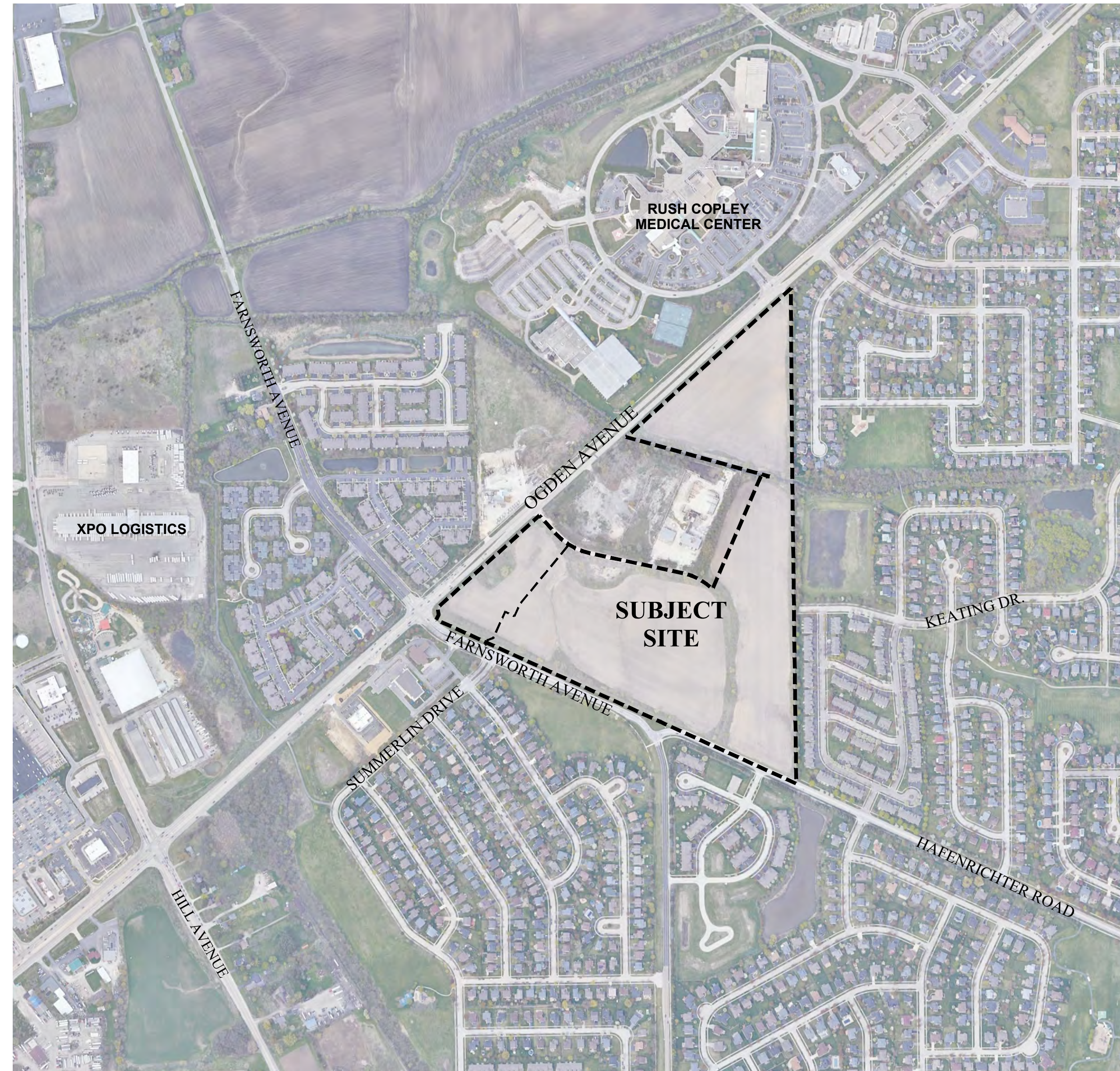
CONSULTANTS:



LANDSCAPE ARCHITECT:
 GARY R. WEBER ASSOCIATES, INC
 402 WEST LIBERTY DRIVE
 WHEATON, ILLINOIS 60187



CIVIL ENGINEER:
 CEMCON, LTD.
 2280 WHITE OAK CIRCLE, SUITE 100
 AURORA, ILLINOIS 60502



LOCATION MAP

SCALE: 1"=500'

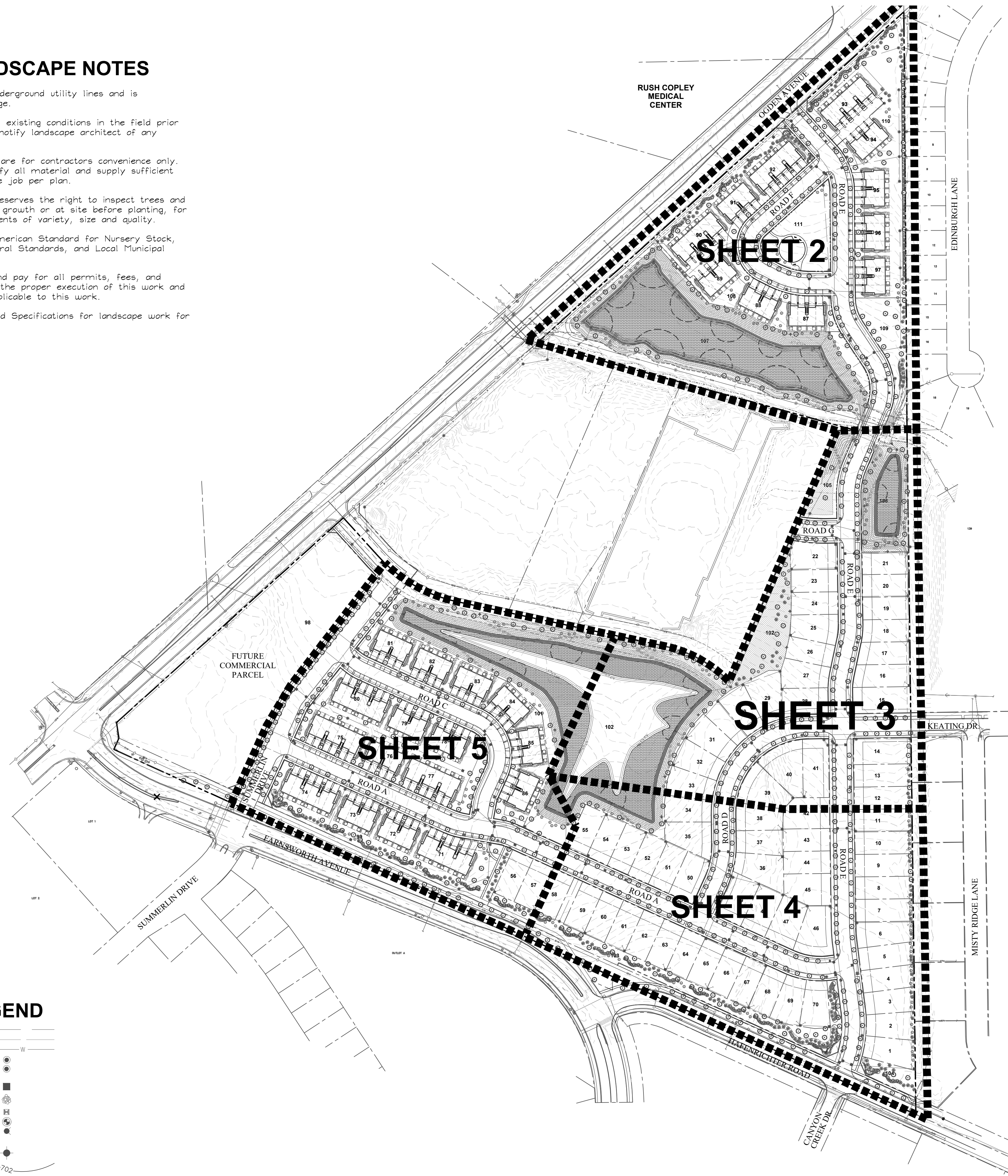
INDEX OF SHEETS

SHEET NO.	DESCRIPTION
0	COVER SHEET
1	OVERALL LANDSCAPE PLAN
2	LANDSCAPE PLAN
3	LANDSCAPE PLAN
4	LANDSCAPE PLAN
5	LANDSCAPE PLAN
6	TYPICAL FOUNDATION LANDSCAPE PLANS
7	MONUMENT DETAILS
8	TREE PRESERVATION PLAN
9	TREE PRESERVATION PLAN
10	TREE INVENTORY
11	TREE INVENTORY



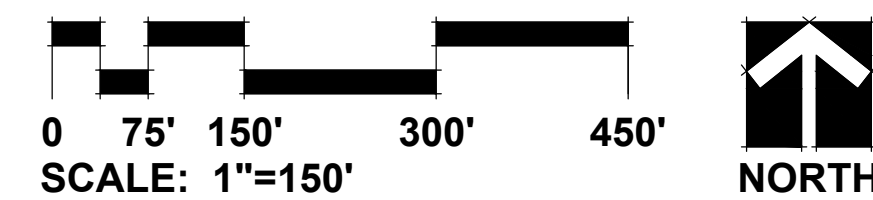
GENERAL LANDSCAPE NOTES

- Contractor shall verify underground utility lines and is responsible for any damage.
- Contractor shall verify all existing conditions in the field prior to construction and shall notify landscape architect of any variance.
- Material quantities shown are for contractors convenience only. The Contractor must verify all material and supply sufficient materials to complete the job per plan.
- The landscape architect reserves the right to inspect trees and shrubs either at place of growth or at site before planting, for compliance with requirements of variety, size and quality.
- Work shall conform to American Standard for Nursery Stock, State of Illinois Horticultural Standards, and Local Municipal requirements.
- Contractor shall secure and pay for all permits, fees, and inspections necessary for the proper execution of this work and comply with all codes applicable to this work.
- See General Conditions and Specifications for landscape work for additional requirements.



SYMBOL LEGEND

- STORM SEWER
- SANITARY SEWER
- WATER MAIN
- SANITARY MANHOLE
- STORM MANHOLE
- CATCH BASIN
- STORM INLET
- RIP RAP
- VALVE IN VAULT
- VALVE IN BOX
- FIRE HYDRANT
- FLARED END SECTION
- STREET LIGHT
- 1 FOOT CONTOURS
- CURB AND GUTTER
- PROPERTY LINE
- EASEMENT LINE
- SETBACK LINE
- NATIVE AREA SIGN



Landscape Data Table: Planting Material Key	
Note: Symbols are blackline for proposed grayscale for existing	
Canopy Trees (minimum size 2.5 caliper) Count:	705
Evergreen Trees (minimum size 6 feet) Count:	229
Understory Trees (minimum size 2.5 caliper or 8 feet if multi-stemmed) Count:	288
Evergreen Shrubs (minimum of 18 inches) Count:	277
Deciduous Shrubs (minimum of 18 inches) Count:	415
Ornamental Grasses Count:	145
Perennials Count:	533
Annuals Count:	0
Groundcover Square Footage:	0
Turf (Seeded) Square Footage:	to be provided at final
Turf (Sod) Square Footage:	to be provided at final
Native Prairie Planting Square Footage:	to be provided at final
Native Wetland Planting Square Footage:	to be provided at final

Landscape Data Table: CTEs Provided			
	CTE Value	Count Provided	Total CTEs Provided
Canopy Trees	1	705	705
Evergreen Trees	1/3	229	76
Understory Trees	1/3	288	96
Deciduous Shrubs	1/20	415	21
Evergreen Shrubs	1/20	277	14
Total:		1914	912



GARY R. WEBER
ASSOCIATES, INC.
LAND PLANNING
ECOLOGICAL CONSULTING
LANDSCAPE ARCHITECTURE
402 WEST LIBERTY DRIVE
WHEATON, ILLINOIS 60187
PHONE: 630-668-7197

CLIENT

D.R. HORTON
America's Builder
1750 E. GOLF ROAD, SUITE 925
SCHLAUMBERG, ILLINOIS 60173
CIVIL ENGINEER
CEMCON, LTD.
2200 WHITE OAK CIRCLE, SUITE 100
AURORA, ILLINOIS 60502

WHEATLAND CROSSING
AURORA, ILLINOIS
OVERALL LANDSCAPE PLAN

REVISIONS	DATE
03	12.14.2023
02	08.23.2023
01	04.20.2023

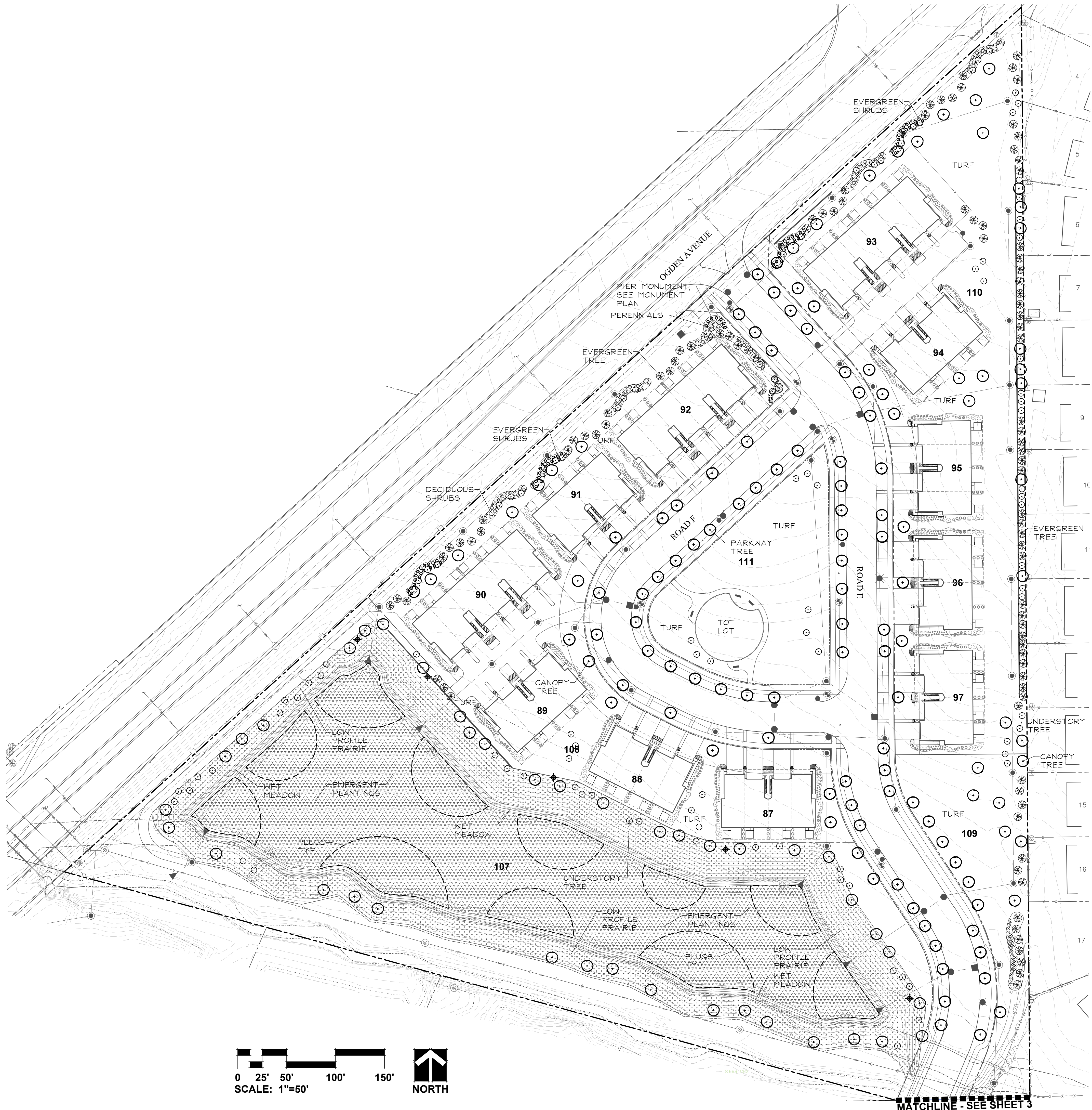
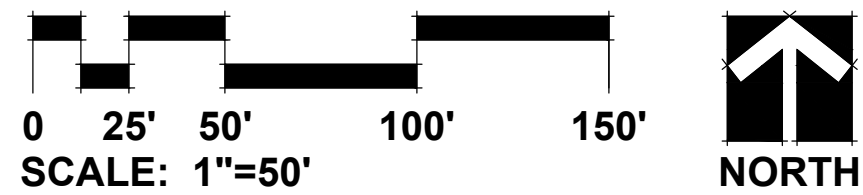
DATE 11.7.2022
PROJECT NO. DR2074
DRAWN CLE
CHECKED DHS
SHEET NO.



1 OF 11

Landscape Implementation Data Table: Plant List by Category						
BOTANICAL NAME	Genus / Species	Family /	COMMON NAME	SIZE	COMMENTS	
Canopy Trees	Acer x freemanii 'Jeffers Red'	(Sapindaceae / Acer / Acer x freemanii)	AUTUMN BLAZE MAPLE	4" Cal.		
	Acer x freemanii 'Marmo'	(Sapindaceae / Acer / Acer x freemanii)	MARMO FREEMAN MAPLE	2.5" Cal.		
	Acer miyabei 'Morton'	(Sapindaceae / Acer / Acer miyabei)	STATE STREET MAPLE	2.5" Cal.		
	Acer x saccharum 'Green Mountain'	(Sapindaceae / Acer / Acer saccharum)	GREEN MOUNTAIN SUGAR MAPLE	2.5" Cal.		
	Cornus alternifolia	(Cornaceae / Cornus / Cornus alternifolia)	COMMON HACKBERRY	2.5" Cal.		
	Gleditsia triacanthos v. inermis 'Skyline'	(Fabaceae / Gleditsia / Gleditsia triacanthos v. inermis)	SKYLINE HONEYLOCUST	2.5" Cal.		
	Gymnocladus dioica 'Espresso-JS'	(Fabaceae / Gymnocladus / Gymnocladus dioica)	ESPRESSO KENTUCKY COFFEETREE	2.5" Cal.		
	Liriodendron tulipifera	(Magnoliaceae / Liriodendron / Liriodendron tulipifera)	TULPTREE	2.5" Cal.		
	Platanus x acerifolia 'Morton Circle'	(Platanaceae / Platanus / Platanus x acerifolia)	EXCLAMATION LONDON PLANETREE	2.5" Cal.		
	Quercus bicolor	(Fagaceae / Quercus / Quercus bicolor)	SWAMP WHITE OAK	2.5" Cal.		
	Quercus imbricaria	(Fagaceae / Quercus / Quercus imbricaria)	SHINGLE OAK	2.5" Cal.		
	Tilia americana 'Redmond'	(Malvaceae / Tilia / Tilia americana)	REDMOND AMERICAN LINDEN	2.5" Cal.		
	Tilia tomentosa 'Sterling'	(Malvaceae / Tilia / Tilia tomentosa)	STERLING SILVER LINDEN	2.5" Cal.		
	Ulmus carpinifolia 'New Horizon'	(Ulmaceae / Ulmus / Ulmus carpinifolia)	NEW HORIZON SMOOTHLEAF ELM	2.5" Cal.		
	Ulmus 'Morton'	(Ulmaceae / Ulmus / Ulmus davidiana var. japonica)	ACCOLADE ELM	2.5" Cal.		
	Total:					
	Evergreen Trees	Abies concolor	(Pinaceae / Abies / Abies concolor)	WHITE FIR	6' Ht.	
		Picea abies	(Pinaceae / Picea / Picea abies)	NORWAY SPRUCE	6' Ht.	
Picea glauca 'Densata'		(Pinaceae / Picea / Picea glauca)	BLACK HILLS SPRUCE	6' Ht.		
Picea omorika		(Pinaceae / Picea / Picea omorika)	SERBIAN SPRUCE	6' Ht.		
Picea pungens		(Pinaceae / Picea / Picea pungens)	GREEN COLORADO SPRUCE	6' Ht.		
Pinus strobus		(Pinaceae / Pinus / Pinus strobus)	WHITE PINE	6' Ht.		
Total:						
Understory Trees	Amelanchier laevis	(Rosaceae / Amelanchier / Amelanchier laevis)	ALLEGHENY SERVICEBERRY	8' Ht.	Multi-stem	
	Amelanchier x grandiflora	(Rosaceae / Amelanchier / Amelanchier x grandiflora)	APPLE SERVICEBERRY	8' Ht.	Multi-stem	
	Betula nigra 'Cully'	(Betulaceae / Betula / Betula nigra)	HERITAGE RIVER BIRCH	8' Ht.	Multi-stem	
	Betula populifolia 'Whitespire'	(Betulaceae / Betula / Betula populifolia)	WHITESPIRE GREY BIRCH	8' Ht.	Multi-stem	
	Carpinus caroliniana	(Betulaceae / Carpinus / Carpinus caroliniana)	AMERICAN HORNBEAM	8' Ht.	Multi-stem	
	Cercis canadensis	(Fabaceae / Cercis / Cercis canadensis)	EASTERN REDBUD	8' Ht.	Multi-stem	
	Cornus alternifolia	(Cornaceae / Cornus / Cornus alternifolia)	PAGODA DOGWOOD	8' Ht.	Multi-stem	
	Cornus mas	(Cornaceae / Cornus / Cornus mas)	CORNELIANCHERRY DOGWOOD	8' Ht.	Multi-stem	
	Malus 'Prairifire'	(Rosaceae / Malus / Malus x)	PRAIRIFIRE CRABAPPLE	8' Ht.	Multi-stem	
	Malus 'Purple Prince'	(Rosaceae / Malus / Malus x)	PURPLE PRINCE CRABAPPLE	8' Ht.	Multi-stem	
	Malus 'Red Jewel'	(Rosaceae / Malus / Malus x)	RED JEWEL CRABAPPLE	8' Ht.	Multi-stem	
	Total:					
Deciduous Shrubs	Cornus sanguinea 'Cato'	(Cornaceae / Cornus / Cornus sanguinea)	ARCTIC SUN DOGWOOD	24" Ht.	3' O.C.	
	Cornus sericea 'Isanti'	(Cornaceae / Cornus / Cornus sericea)	REDSIER DOGWOOD	36" Ht.	4' O.C.	
	Hydrangea macrophylla 'Balmer'	(Hydrangeaceae / Hydrangea / Hydrangea macrophylla)	ENDLESS SUMMER HYDRANGEA	24" Ht.	3' O.C.	
	Rhus aromatica 'Gro-Low'	(Anacardiaceae / Rhus / Rhus aromatica)	GRO-LOW FRAGRANT SUMAC	24" Ht.	4' O.C.	
	Syringa meyeri 'Paladin'	(Oleaceae / Syringa / Syringa meyeri)	DWARF KOREAN LILAC	36" Ht.	4' O.C.	
	Viburnum x juddii	(Adoxaceae / Viburnum / Viburnum x juddii)	JUDD VIBURNUM	36" Ht.	4' O.C.	
	Weigela x 'Dark Horse'	(Caprifoliaceae / Weigela / Weigela florida)	DARK HORSE WEIGELA	24" Ht.	3' O.C.	
	Total:					
	Evergreen Shrubs	Juniperus chinensis 'Kallay's Compact'	(Cupressaceae / Juniperus / Juniperus chinensis)	KALLAY'S COMPACT PFITZER JUNIPER	30" Wd.	4' O.C.
		Juniperus chinensis 'Sea Green'	(Cupressaceae / Juniperus / Juniperus chinensis)	SEA GREEN JUNIPER	36" Wd.	5' O.C.
Taxus x media 'Densiformis'		(Taxaceae / Taxus / Taxus x media)	DENSE YEW	30" Wd.	4' O.C.	
Thuja occidentalis 'Holmstrup'		(Cupressaceae / Thuja / Thuja occidentalis)	HOLMSTRUP ARBORVITAE	24" Wd.	4' O.C.	
Thuja occidentalis 'Nigra'		(Cupressaceae / Thuja / Thuja occidentalis)	DARK GREEN AMERICAN ARBORVITAE	6' Ht.	4' O.C.	
Thuja occidentalis 'Smaragd'		(Cupressaceae / Thuja / Thuja occidentalis)	EMERALD GREEN ARBORVITAE	6' Ht.	4' O.C.	
Total:						
Ornamental Grasses	Calamagrostis x acutiflora 'Karl Foerster'	(Poaceae / Calamagrostis / Calamagrostis x acutiflora)	FEATHER REED GRASS	Mature Height = 4'-6'	30" O.C.	
	Panicum virgatum 'Haense Herms'	(Poaceae / Panicum / Panicum virgatum)	HAENSE HERMS SWITCHGRASS	Mature Height = 4'-6'	30" O.C.	
	Panicum virgatum 'Rotstrahbusch'	(Poaceae / Panicum / Panicum virgatum)	RED SWITCHGRASS	Mature Height = 4'-6'	30" O.C.	
	Sporobolus heterolepis	(Poaceae / Sporobolus / Sporobolus heterolepis)	PRAIRIE DROPSEED	Mature Height = 24-36"	24" O.C.	
Total:						
Perennials	Allium 'Summer Beauty'	(Amaryllidaceae / Allium / Allium x)	SUMMER BEAUTY ONION	18" O.C.		
	Nepeta x faassenii 'Walkers Low'	(Lamiaceae / Nepeta / Nepeta x faassenii)	WALKER'S LOW CATMINT	18" O.C.		
	Echinacea 'Pixie Meadowbrite'	(Asteraceae / Echinacea / Echinacea x)	PIXIE MEADOWBRITE CORNFLOWER	18" O.C.		
	Hemerocallis 'Happy Returns'	(Asphodelaceae / Hemerocallis / Hemerocallis x)	HAPPY RETURNS DAYLILY	18" O.C.		
	Hemerocallis 'Rosy Returns'	(Asphodelaceae / Hemerocallis / Hemerocallis x)	ROSY RETURNS DAYLILY	18" O.C.		
	Phlox 'Forever Pink'	(Polemoniaceae / Phlox / Phlox glaberrima)	FOREVER PINK PHLOX	18" O.C.		
	Rudbeckia fulgida 'Goldsturm'	(Asteraceae / Rudbeckia / Rudbeckia fulgida)	BLACK-EYED SUSAN	18" O.C.		
	Total:					
Misc. Materials	Shredded Hardwood Mulch			C.Y.		
	Sod			S.Y.		
	Turf Seed and Blanket			AC.		
	Low Profile Prairie Seed Mix & Erosion Control Blanket			AC.		
	Wet Meadow Seed Mix & Erosion Control Blanket			AC.		
	Emergent Seed Mix			AC.		
Naturalized Area Sign			EA.			

PLANT QUANTITIES TO BE PROVIDED AT FINAL
TOWNHOME FOUNDATION PLANTINGS EXCLUDED FROM OVERALL PLANT LIST
SEE SHEET 6 FOR FOUNDATION PLANTINGS



MATCHLINE - SEE SHEET 3



GARY R. WEBER
ASSOCIATES, INC.
LAND PLANNING
ECOLOGICAL CONSULTING
LANDSCAPE ARCHITECTURE
402 WEST LIBERTY DRIVE
WHEATON, ILLINOIS 60187
PHONE: 630-668-7197

CLIENT
D-R-HORTON
America's Builder
1750 E. GOLF ROAD, SUITE 925
SCHAMBURG, ILLINOIS 60173
CIVIL ENGINEER
CEMCON, LTD.
2280 WHITE OAK CIRCLE, SUITE 100
AURORA, ILLINOIS 60502

WHEATLAND CROSSING
AURORA, ILLINOIS
LANDSCAPE PLAN

REVISIONS	DATE
03	12.14.2023
02	08.23.2023
01	04.20.2023

DATE 11.7.2022
PROJECT NO. DR2074
DRAWN CLE
CHECKED DHS
SHEET NO.



GARY R. WEBER
ASSOCIATES, INC.
LAND PLANNING
ECOLOGICAL CONSULTING
LANDSCAPE ARCHITECTURE
402 WEST LIBERTY DRIVE
WHEATON, ILLINOIS 60187
PHONE: 630-668-7197

CLIENT



America's Builder
1750 E. GOLF ROAD, SUITE 925
SCHAMBOURG, ILLINOIS 60173
CIVIL ENGINEER

CEMCON, LTD.
2200 WHITE OAK CIRCLE, SUITE 100
AURORA, ILLINOIS 60502

WHEATLAND CROSSING
AURORA, ILLINOIS

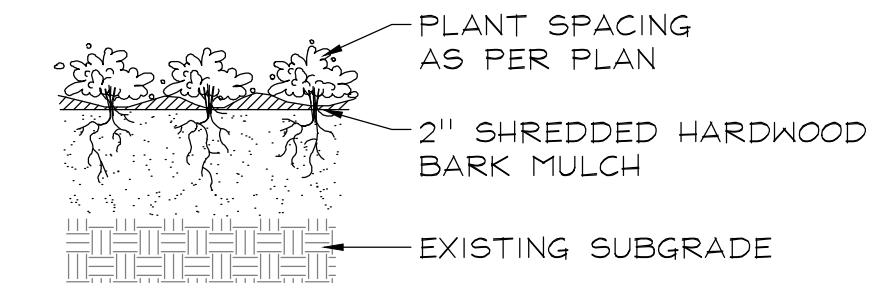
LANDSCAPE PLAN

REVISIONS	DATE
03	12.14.2023
02	08.23.2023
01	04.20.2023

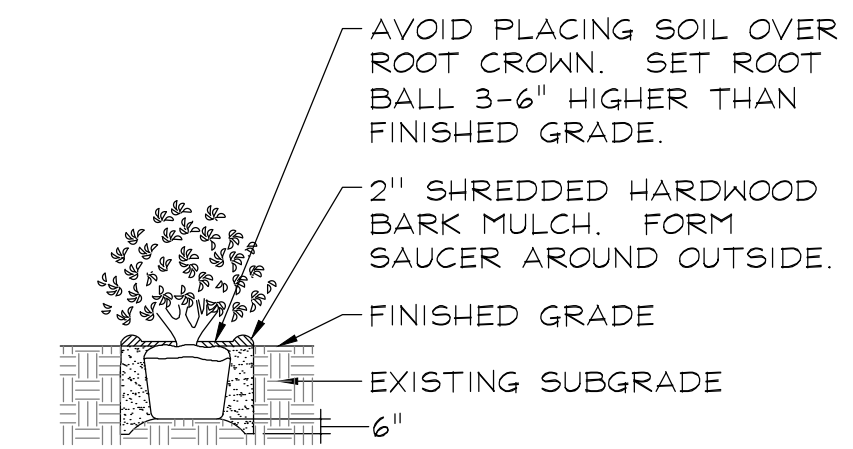
DATE	11.7.2022
PROJECT NO.	DR2074
DRAWN	CLE
CHECKED	DHS
SHEET NO.	

3 OF 11

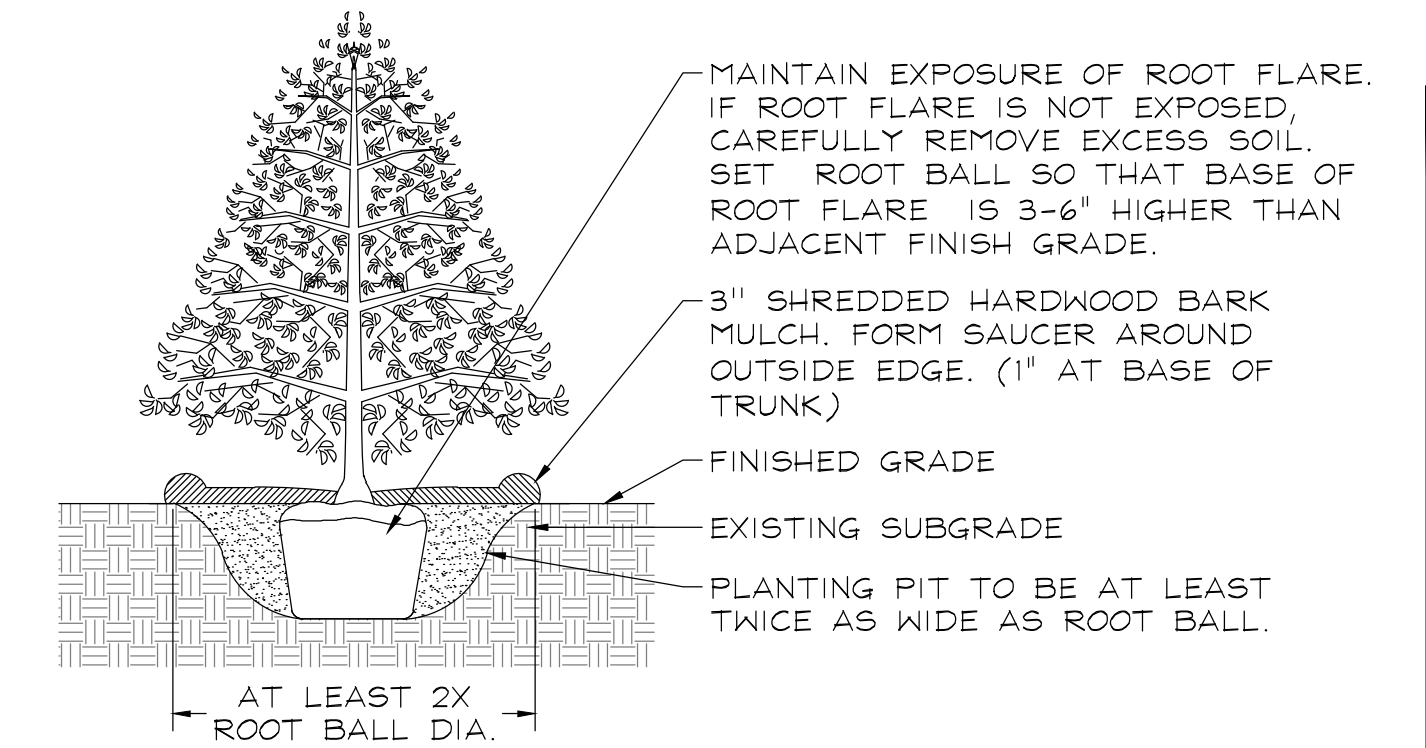
PLANTING DETAILS



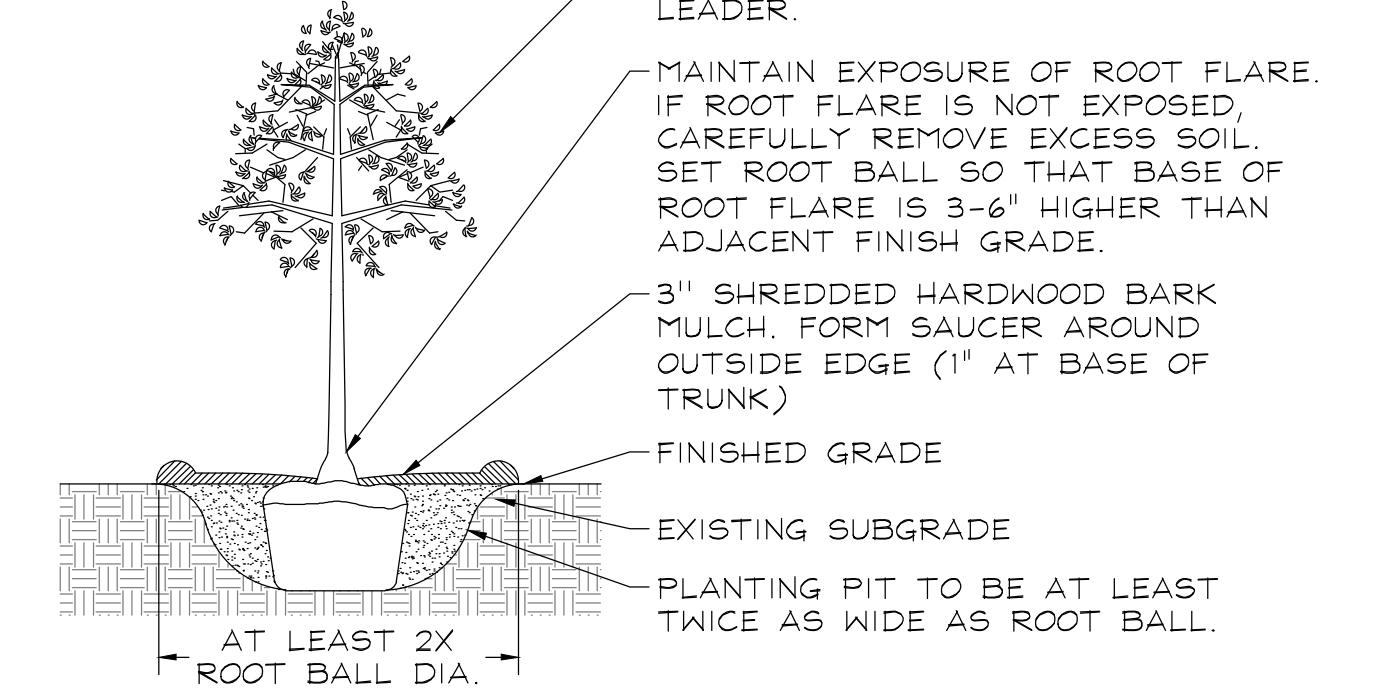
PERENNIALS AND GROUNDCOVERS
NOT TO SCALE



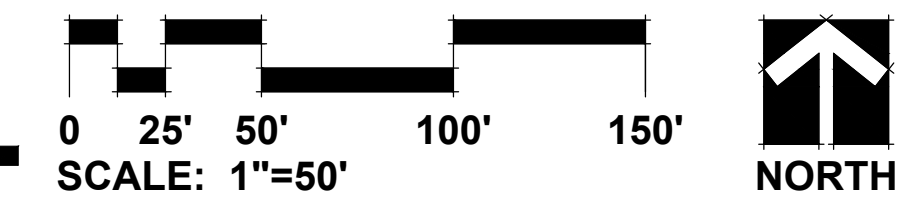
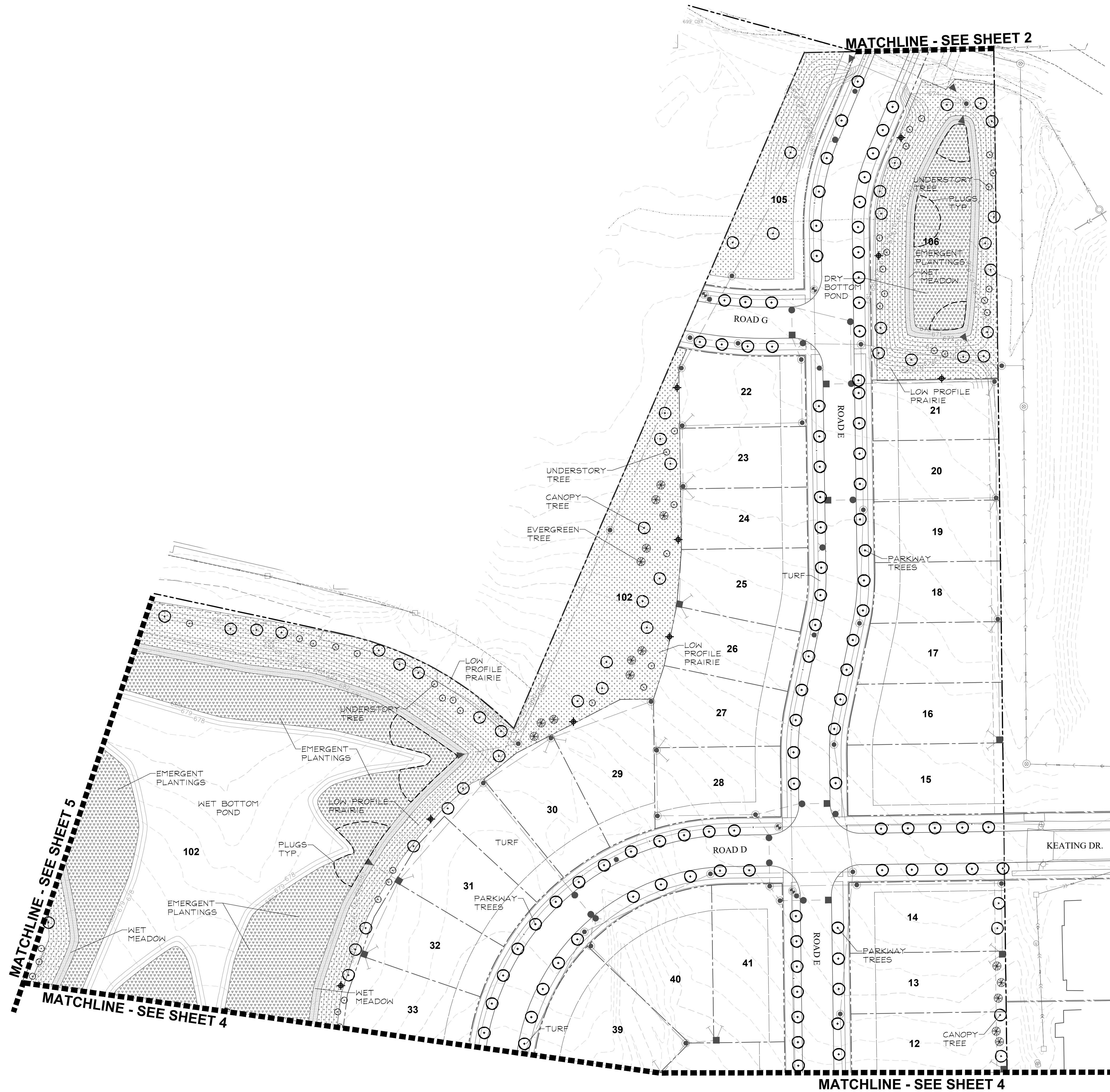
DECIDUOUS AND EVERGREEN SHRUBS
NOT TO SCALE



EVERGREEN TREES
NOT TO SCALE



DECIDUOUS TREES
NOT TO SCALE





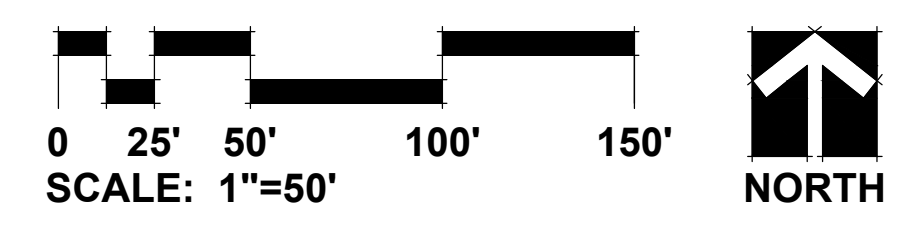
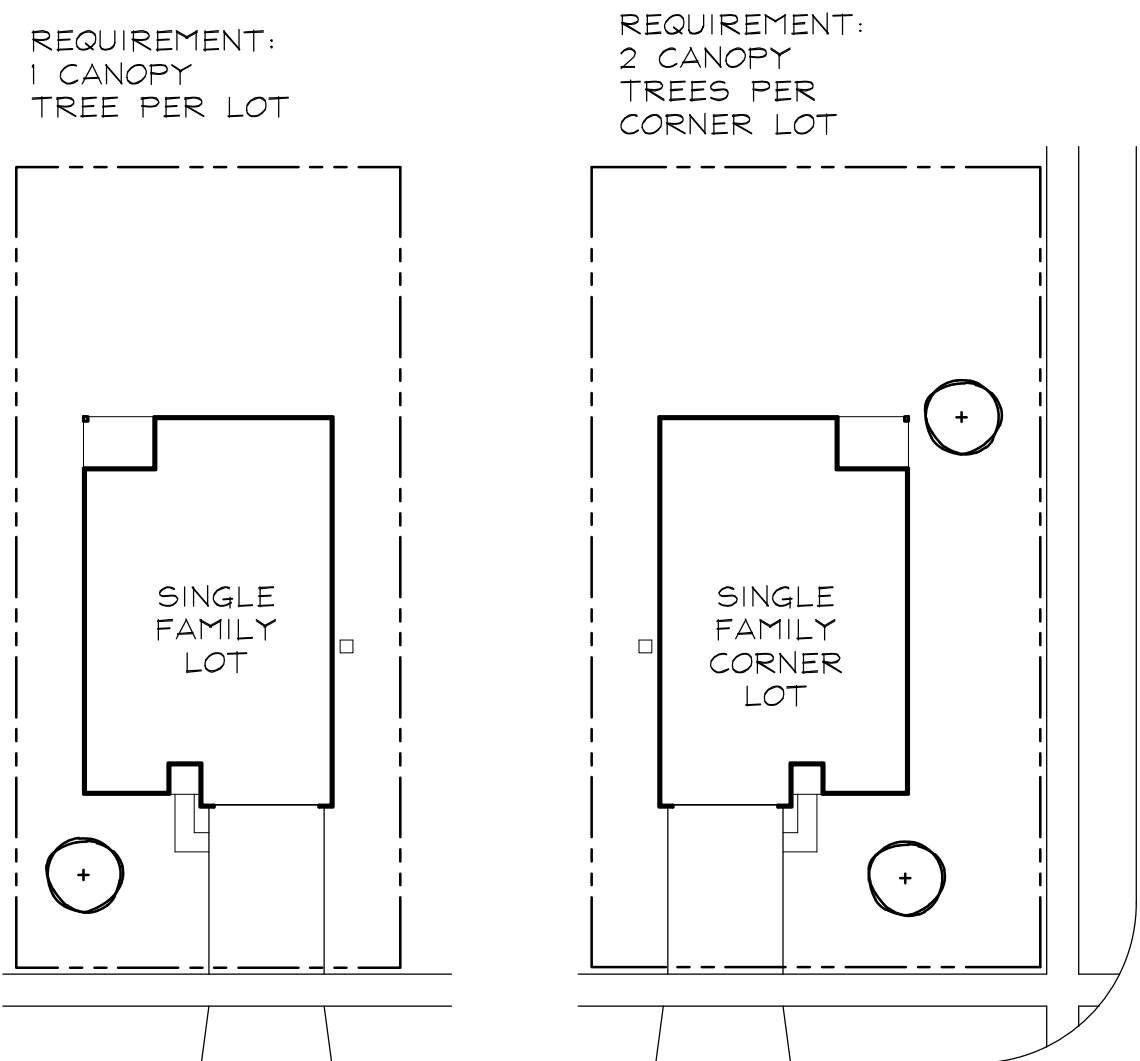
GARY R. WEBER
ASSOCIATES, INC.
LAND PLANNING
ECOLOGICAL CONSULTING
LANDSCAPE ARCHITECTURE
402 WEST LIBERTY DRIVE
WHEATON, ILLINOIS 60187
PHONE: 630-668-7197

CLIENT
D.R. HORTON
America's Builder
1750 E. GOLF ROAD, SUITE 925
SCHAUMBURG, ILLINOIS 60173
CIVIL ENGINEER
CEMCON, LTD.
2200 WHITE OAK CIRCLE, SUITE 100
AURORA, ILLINOIS 60502

WHEATLAND CROSSING
AURORA, ILLINOIS
LANDSCAPE PLAN

REVISIONS	DATE
03	12.14.2023
02	08.23.2023
01	04.20.2023

DATE 11.7.2022
PROJECT NO. DR2074
DRAWN CLE
CHECKED DHS
SHEET NO.



DATE PLOTTED: 11/17/2022 10:58 AM





GARY R. WEBER
ASSOCIATES, INC.
LAND PLANNING
ECOLOGICAL CONSULTING
LANDSCAPE ARCHITECTURE
402 WEST LIBERTY DRIVE
WHEATON, ILLINOIS 60187
PHONE: 630-668-7197

CLIENT



America's Builder
1750 E. GOLF ROAD, SUITE 925
SCHAMBURG, ILLINOIS 60173
CIVIL ENGINEER

CEMCON, LTD.
2280 WHITE OAK CIRCLE, SUITE 100
AURORA, ILLINOIS 60502

WHEATLAND CROSSING

AURORA, ILLINOIS

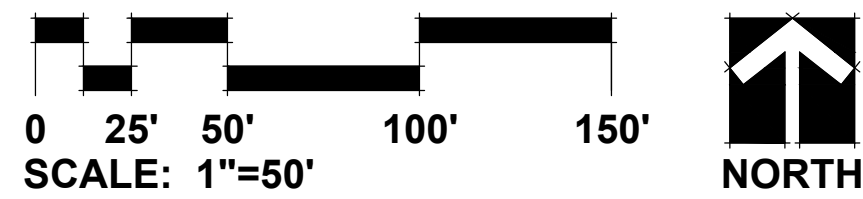
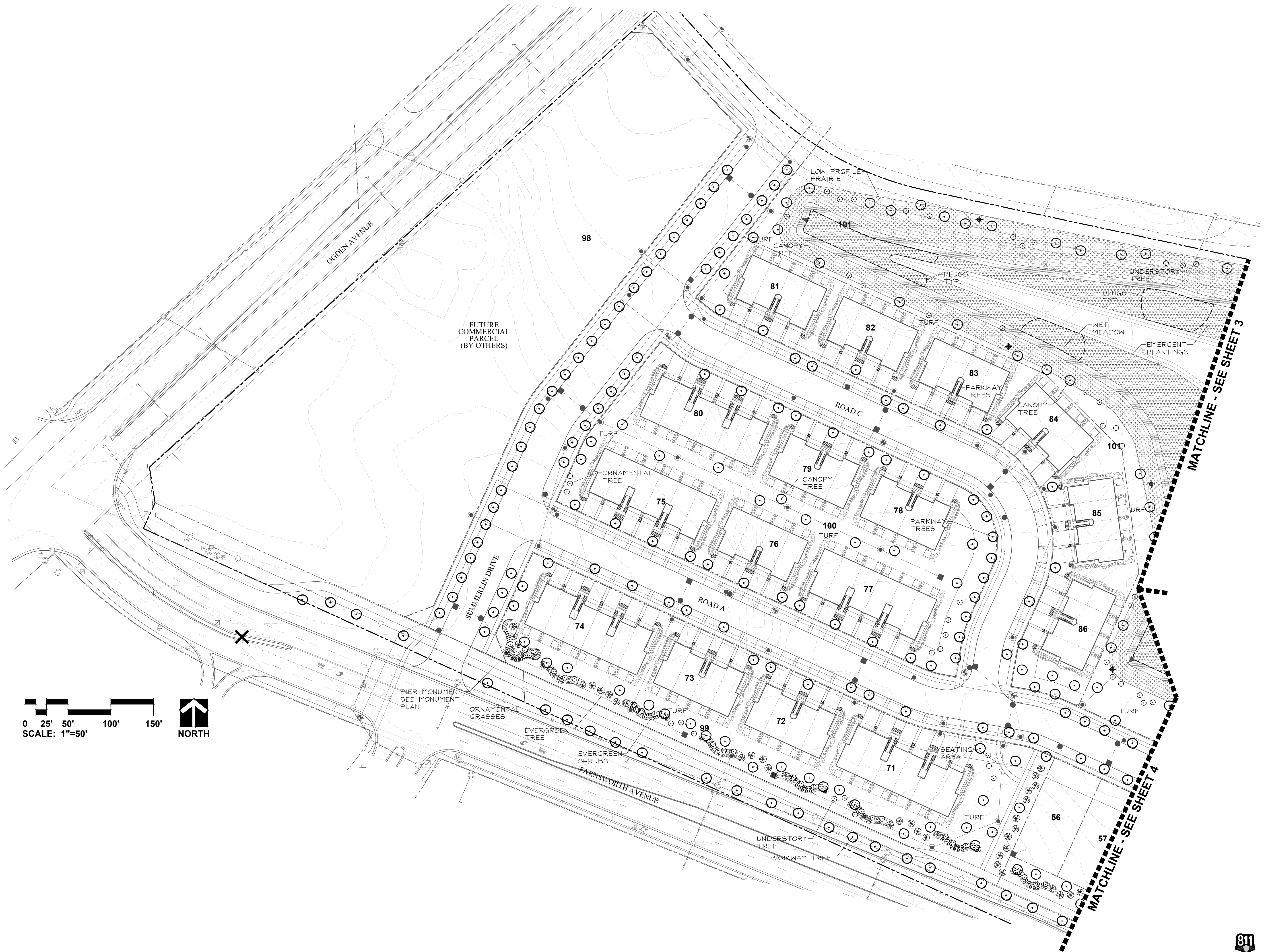
LANDSCAPE PLAN

NO.	DATE
03	12.14.2023
02	08.23.2023
01	04.20.2023

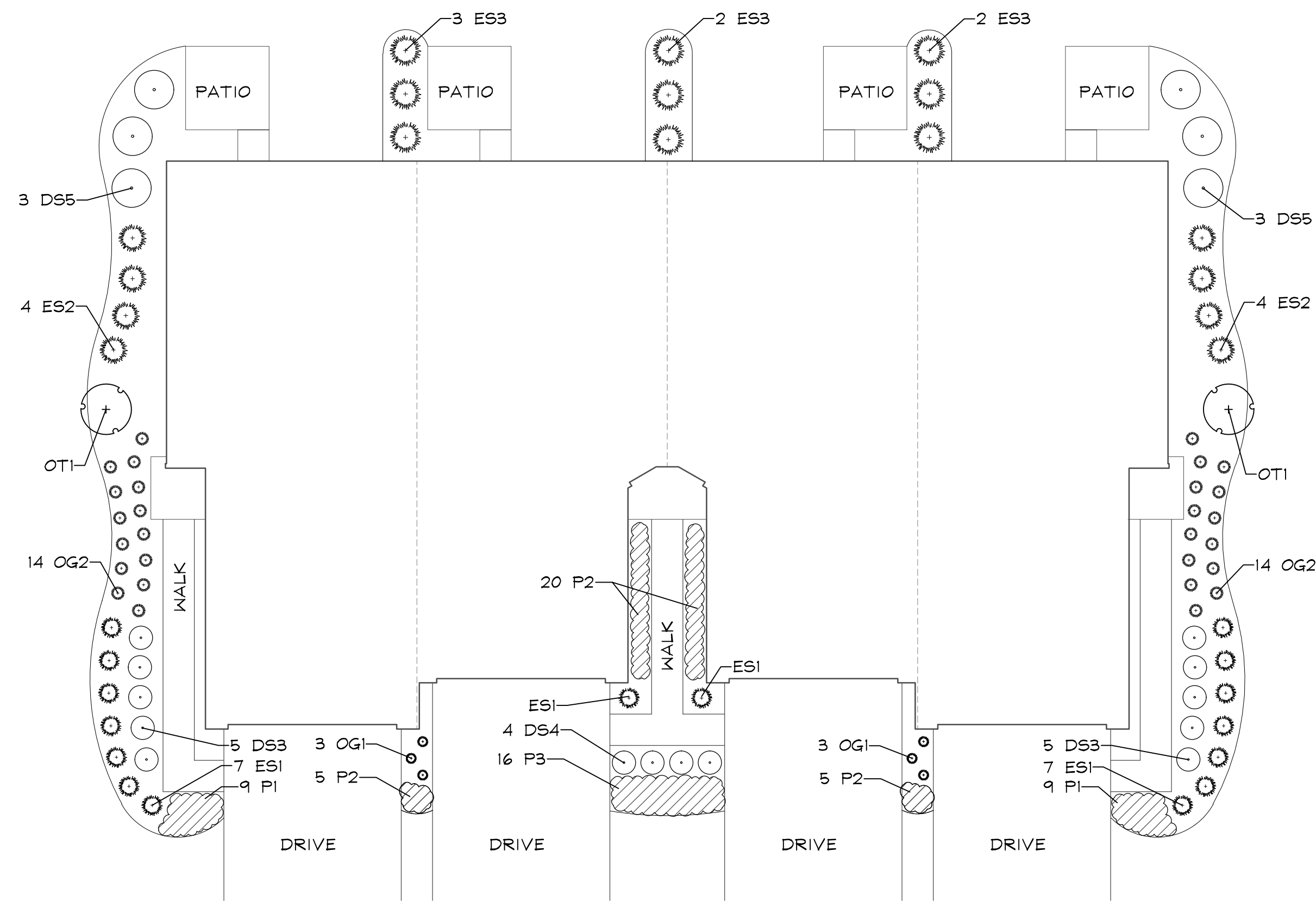
REVISIONS

DATE	11.7.2022
PROJECT NO.	DR2074
DRAWN	CLE
CHECKED	DHS
SHEET NO.	

5 OF 11



Know what's below.
Call before you dig.



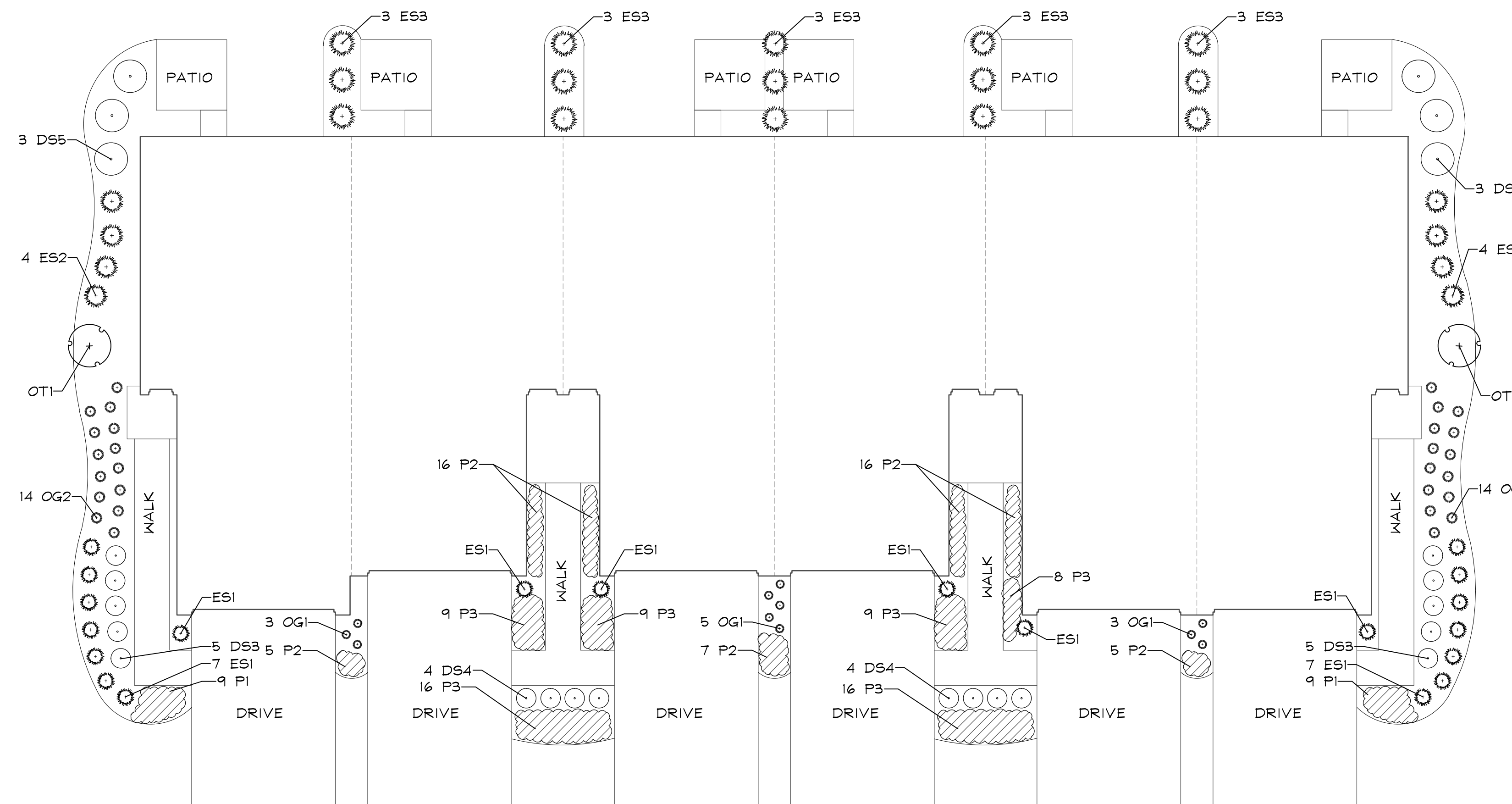
TYPICAL FOUR UNIT FOUNDATION LANDSCAPE PLAN
SCALE: 1"=10'

4 UNIT FOUNDATION PLAN (NORTH/EAST FACING) PLANT LIST

Key	Botanical/Common Name	Size	Remarks
ORNAMENTAL TREES			
OT1	Cornus mas 'Golden Glory' GOLDEN GLORY CORNELIANCHERRY DOGWOOD	5' Tall	
DECIDUOUS SHRUBS			
DS1	Cornus sericea 'Bailey' BAILEY'S REDTWIG DOGWOOD	36" Tall	5' O.C.
DS2	Rhus aromatica 'Gro-Low' GRO-LOW SUMAC	24" Wide	4' O.C.
DS3	Hydrangea quercifolia 'Alice' OAKLEAF HYDRANGEA	36" Tall	4' O.C.
DS4	Syringa meyeri 'Palibin' DWARF KOREAN LILAC	24" Tall	4' O.C.
DS5	Viburnum 'Juddii' JUDD VIBURNUM	36" Tall	5' O.C.
EVERGREEN SHRUBS			
ES1	Juniperus sabina 'Blue Forest' BLUE FOREST JUNIPER	24" Wide	4' O.C.
ES2	Taxus x media 'Densiformis' DENSE YEW	24" Wide	4' O.C.
ET1	Thuja occidentalis 'Smaragd' EMERALD GREEN ARBORVITAE	5' Tall	
PERENNIALS AND ORNAMENTAL GRASSES			
OG1	Calamagrostis acutiflora 'Karl Foerster' FEATHER REED GRASS	#1	24" O.C.
P1	Hemerocallis 'Happy Returns' HAPPY RETURNS DAYLILY	#1	18" O.C.
P2	Hosta 'Patriot' PATRIOT HOSTA	#1	18" O.C.
P3	Heuchera 'Palace Purple' PALACE PURPLE CORAL BELLS	#1	18" O.C.
OG2	Pennisetum alopecuroides 'Hameln' DWARF FOUNTAIN GRASS	#1	24" O.C.

4 UNIT FOUNDATION PLAN (SOUTH/WEST FACING) PLANT LIST

Key	Botanical/Common Name	Size	Remarks
ORNAMENTAL TREES			
OT1	Malus x 'Red Jewel' RED JEWEL CRABAPPLE	5' Tall	
DECIDUOUS SHRUBS			
DS1	Forsythia x intermedia 'New Hampshire Gold' NEW HAMPSHIRE GOLD FORSYTHIA	36" Tall	5' O.C.
DS2	Weigela x 'Dark Horse' DARK HORSE WEIGELA	24" Wide	4' O.C.
DS3	Hydrangea paniculate 'Bulk' QUICKFIRE HYDRANGEA	36" Tall	4' O.C.
DS4	Syringa meyeri 'Palibin' DWARF KOREAN LILAC	24" Tall	4' O.C.
DS5	Viburnum dentatum ARROWWOOD VIBURNUM	36" Tall	5' O.C.
EVERGREEN SHRUBS			
ES1	Pinus mugo 'Sloumound' DWARF MOUNTAIN PINE	24" Wide	4' O.C.
ES2	Buxus 'Glencoe' CHICAGOLAND GREEN BOXWOOD	24" Wide	4' O.C.
ET1	Thuja occidentalis 'Smaragd' EMERALD GREEN ARBORVITAE	5' Tall	
PERENNIALS AND ORNAMENTAL GRASSES			
OG1	Miscanthus sinensis 'Purpurascens' PURPLE MAIDEN GRASS	#1	24" O.C.
P1	Liriope muscari 'Big Blue' BIG BLUE LILYTURF	#1	18" O.C.
P2	Sedum 'Autumn Joy' AUTUMN JOY SEDUM	#1	18" O.C.
P3	Achillea millefolium 'Balviolet' NEW VINTAGE VIOLET YARROW	#1	12" O.C.
OG2	Sporobolus heterolepis PRAIRIE DROPSSEED	#1	18" O.C.



TYPICAL SIX UNIT FOUNDATION LANDSCAPE PLAN
SCALE: 1"=10'

6 UNIT FOUNDATION PLAN (NORTH/EAST FACING) PLANT LIST

Key	Botanical/Common Name	Size	Remarks
ORNAMENTAL TREES			
OT1	Amelanchier x grandiflora APPLE SERVICEBERRY	5' Tall	
DECIDUOUS SHRUBS			
DS1	Cornus sericea 'Bailey' BAILEY'S REDTWIG DOGWOOD	36" Tall	5' O.C.
DS2	Aronia melanocarpa 'Morton' IROQUOIS BEAUTY CHOKEBERRY	24" Tall	3' O.C.
DS3	Hydrangea quercifolia 'Alice' OAKLEAF HYDRANGEA	36" Tall	4' O.C.
DS4	Syringa meyeri 'Palibin' DWARF KOREAN LILAC	24" Tall	4' O.C.
DS5	Viburnum 'Juddii' JUDD VIBURNUM	36" Tall	5' O.C.
EVERGREEN SHRUBS			
ES1	Juniperus sabina 'Blue Forest' BLUE FOREST JUNIPER	24" Wide	4' O.C.
ES2	Taxus x media 'Densiformis' DENSE YEW	24" Wide	4' O.C.
ES3	Thuja occidentalis 'Smaragd' EMERALD GREEN ARBORVITAE	5' Tall	
PERENNIALS AND ORNAMENTAL GRASSES			
OG1	Calamagrostis acutiflora 'Karl Foerster' FEATHER REED GRASS	#1	24" O.C.
P1	Hemerocallis 'Happy Returns' HAPPY RETURNS DAYLILY	#1	18" O.C.
P2	Hosta 'Patriot' PATRIOT HOSTA	#1	18" O.C.
P3	Heuchera 'Georgia Peach' GEORGIA PEACH CORAL BELLS	#1	18" O.C.
OG2	Pennisetum alopecuroides 'Hameln' DWARF FOUNTAIN GRASS	#1	24" O.C.

6 UNIT FOUNDATION PLAN (SOUTH/WEST FACING) PLANT LIST

Key	Botanical/Common Name	Size	Remarks
ORNAMENTAL TREES			
OT1	Magnolia stellata 'Royal Star' ROYAL STAR MAGNOLIA	5' Tall	
DECIDUOUS SHRUBS			
DS1	Forsythia x intermedia 'New Hampshire Gold' NEW HAMPSHIRE GOLD FORSYTHIA	36" Tall	5' O.C.
DS2	Forsythia 'nimbus' SHOW OFF SUGAR BABY FORSYTHIA	24" Tall	
DS3	Hydrangea paniculate 'Bulk' QUICKFIRE HYDRANGEA	36" Tall	4' O.C.
DS4	Weigela florida 'Bokrasopin' SONIC BLOOM PINK WEIGELA	24" Tall	4' O.C.
DS5	Cotinus cogycgria 'NCCOI' WINECRAFT BLACK SMOKEBUSH	36" Tall	5' O.C.
EVERGREEN SHRUBS			
ES1	Pinus mugo 'Sloumound' DWARF MOUNTAIN PINE	24" Wide	4' O.C.
ES2	Buxus 'Glencoe' CHICAGOLAND GREEN BOXWOOD	24" Wide	4' O.C.
ES3	Thuja occidentalis 'Smaragd' EMERALD GREEN ARBORVITAE	5' Tall	
PERENNIALS AND ORNAMENTAL GRASSES			
OG1	Miscanthus sinensis 'Purpurascens' PURPLE MAIDEN GRASS	#1	24" O.C.
P1	Phlox 'Forever Pink' FOREVER PINK PHLOX	#1	12" O.C.
P2	Liriope muscari 'Big Blue' BIG BLUE LILYTURF	#1	18" O.C.
P3	Hemerocallis 'Rosy Returns' ROSY RETURNS DAYLILY	#1	18" O.C.
OG2	Sporobolus heterolepis PRAIRIE DROPSSEED	#1	18" O.C.

REVISIONS	DATE
03	12.14.2023
02	08.23.2023
01	04.20.2023

DATE	11.7.2022
PROJECT NO.	DR2074
DRAWN	CLE
CHECKED	DHS
SHEET NO.	

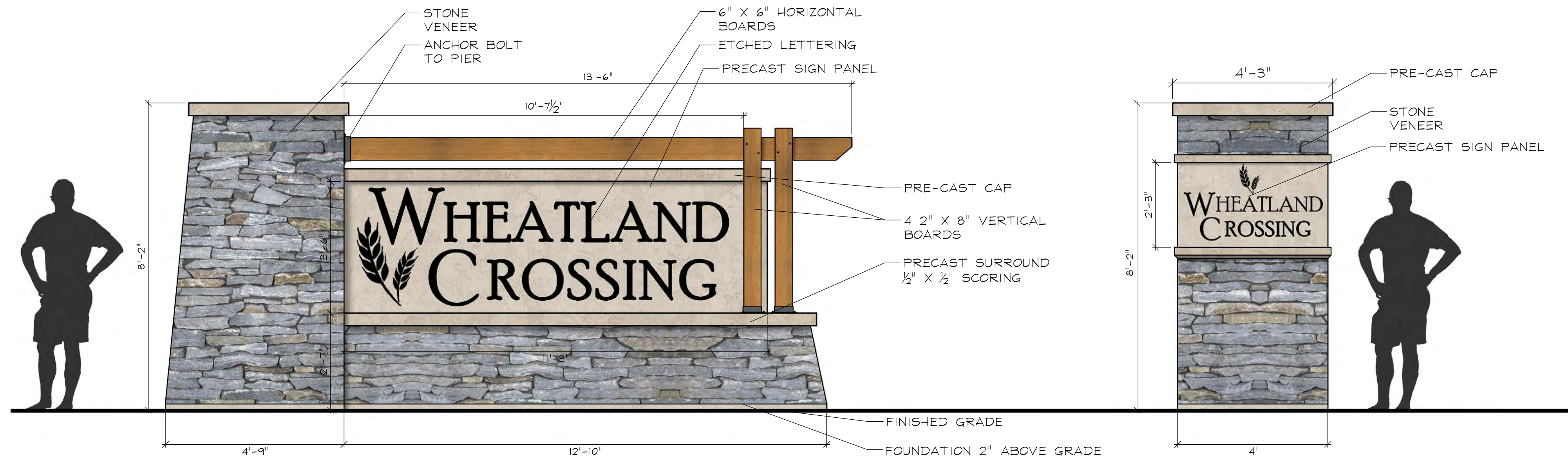




GARY R. WEBER ASSOCIATES, INC.
 LAND PLANNING
 ECOLOGICAL CONSULTING
 LANDSCAPE ARCHITECTURE
 402 WEST LIBERTY DRIVE
 WHEATON, ILLINOIS 60187
 PHONE: 630-668-7197

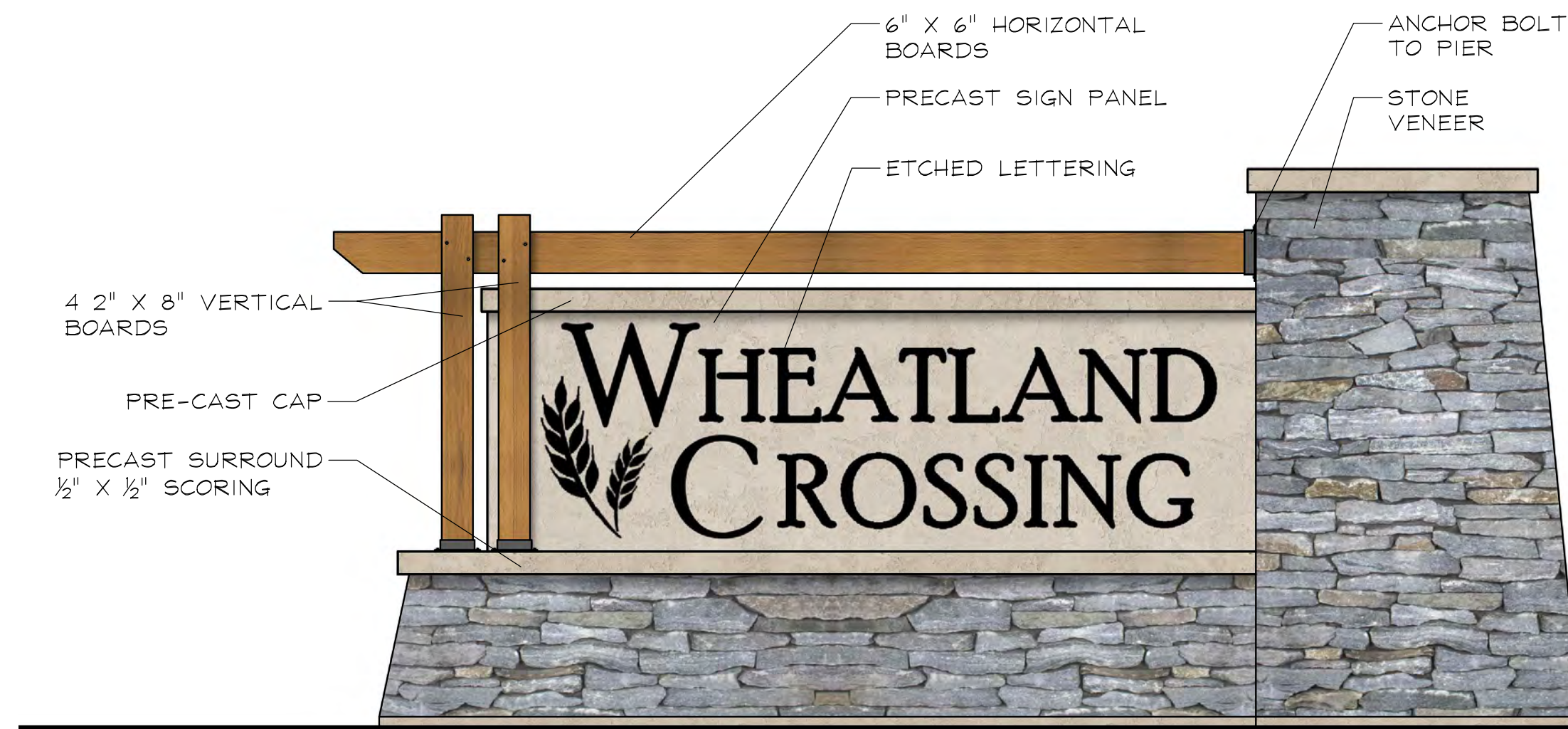
CLIENT
D.R. HORTON
America's Builder
 1750 E. GOLF ROAD, SUITE 925
 SCHLAUBURG, ILLINOIS 60173
 CIVIL ENGINEER
CEMCON, LTD.
 2280 WHITE OAK CIRCLE, SUITE 100
 AURORA, ILLINOIS 60502

Elevation Data Table: Ground Signage				
Ground Sign #	Description	Value	Unit	
1	i) Length of street frontage - on which Sign is Located	2,351	Feet	
	ii) Width of Sign Face	11.25	Feet	
	iii) Height of Sign Face	3.50	Feet	
	iv) Square Footage of Sign Face	39	Square Feet	
	v) Height of Sign (overall)	8.17	Feet	
	vi) Width of Sign (overall)	17.58	Feet	
	vii) Type of Sign		Monument	
	viii) Type of Sign Base		Masonry	
	ix) Is there a Digital Display	No		
	2	i) Length of street frontage - on which Sign is Located	2,351	Feet
ii) Width of Sign Face		4	Feet	
iii) Height of Sign Face		2.25	Feet	
iv) Square Footage of Sign Face		9	Square Feet	
v) Height of Sign (overall)		8.17	Feet	
vi) Width of Sign (overall)		4	Feet	
vii) Type of Sign			Monument	
viii) Type of Sign Base			Masonry	
ix) Is there a Digital Display		No		
3		i) Length of street frontage - on which Sign is Located	2,351	Feet
	ii) Width of Sign Face	4	Feet	
	iii) Height of Sign Face	2.25	Feet	
	iv) Square Footage of Sign Face	9	Square Feet	
	v) Height of Sign (overall)	8.17	Feet	
	vi) Width of Sign (overall)	4	Feet	
	vii) Type of Sign		Monument	
	viii) Type of Sign Base		Masonry	
	ix) Is there a Digital Display	No		
	4	i) Length of street frontage - on which Sign is Located	1,318	Feet
ii) Width of Sign Face		4	Feet	
iii) Height of Sign Face		2.25	Feet	
iv) Square Footage of Sign Face		9	Square Feet	
v) Height of Sign (overall)		8.17	Feet	
vi) Width of Sign (overall)		4	Feet	
vii) Type of Sign			Monument	
viii) Type of Sign Base			Masonry	
ix) Is there a Digital Display		No		

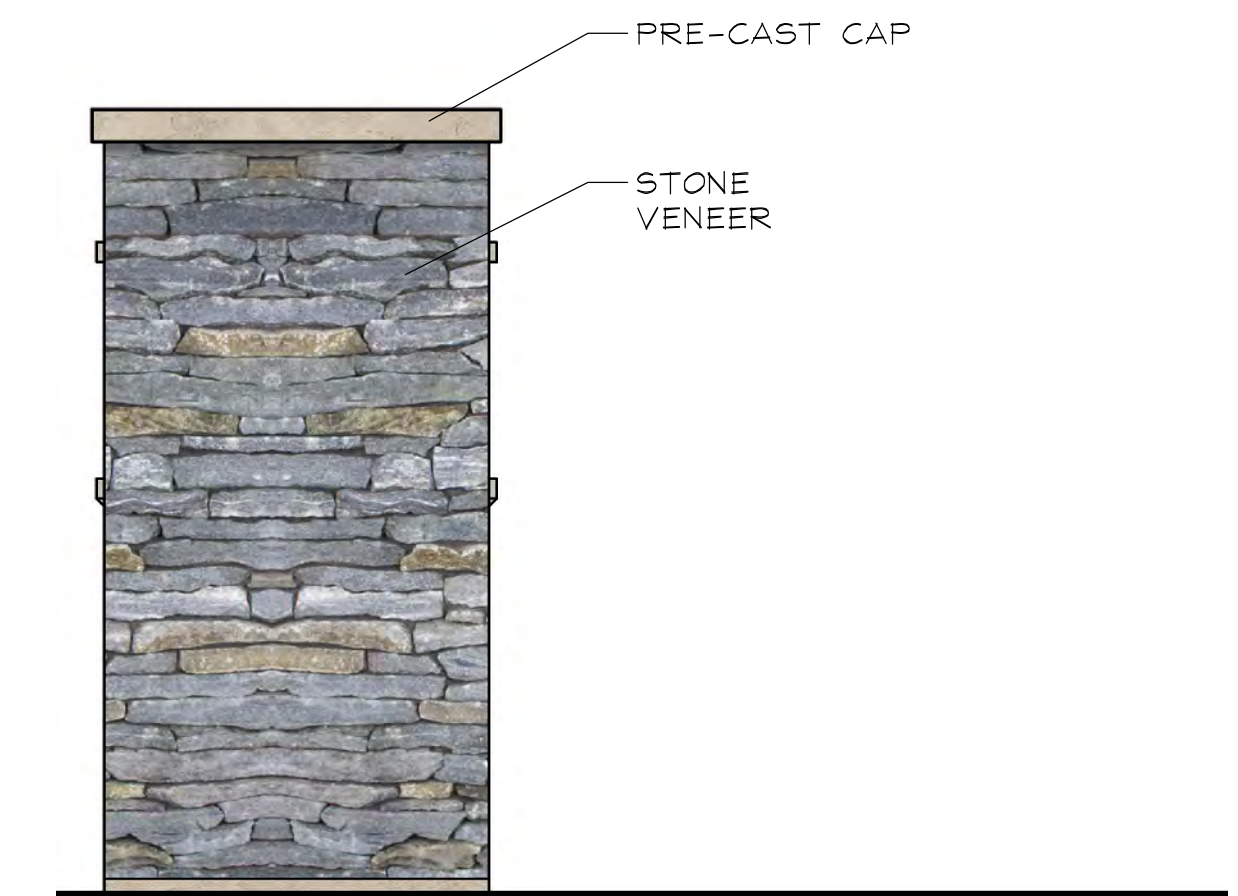


FRONT MAIN MONUMENT ELEVATION
 SCALE: 1/2"=1'-0"

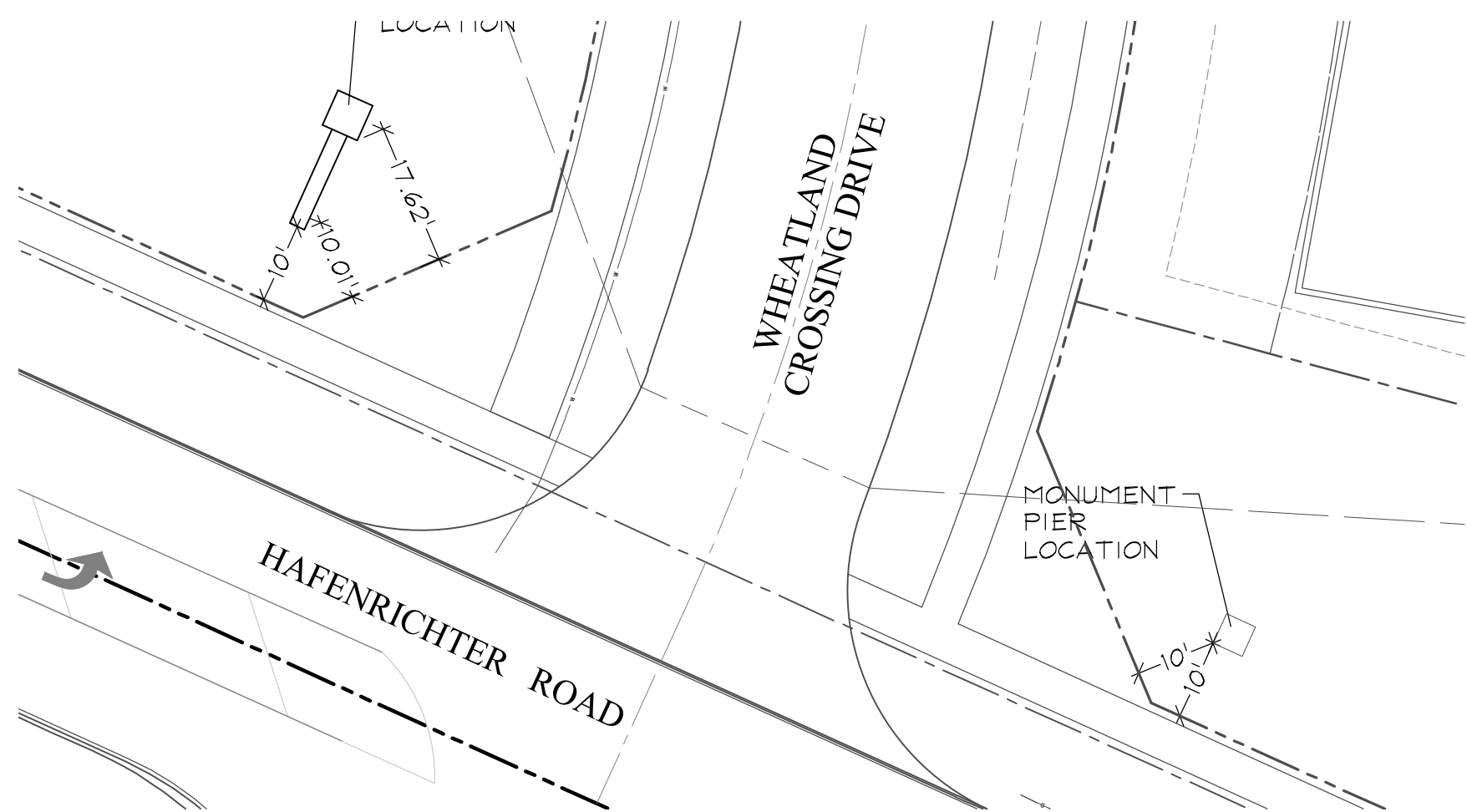
FRONT PIER MONUMENT ELEVATION
 SCALE: 1/2"=1'-0"



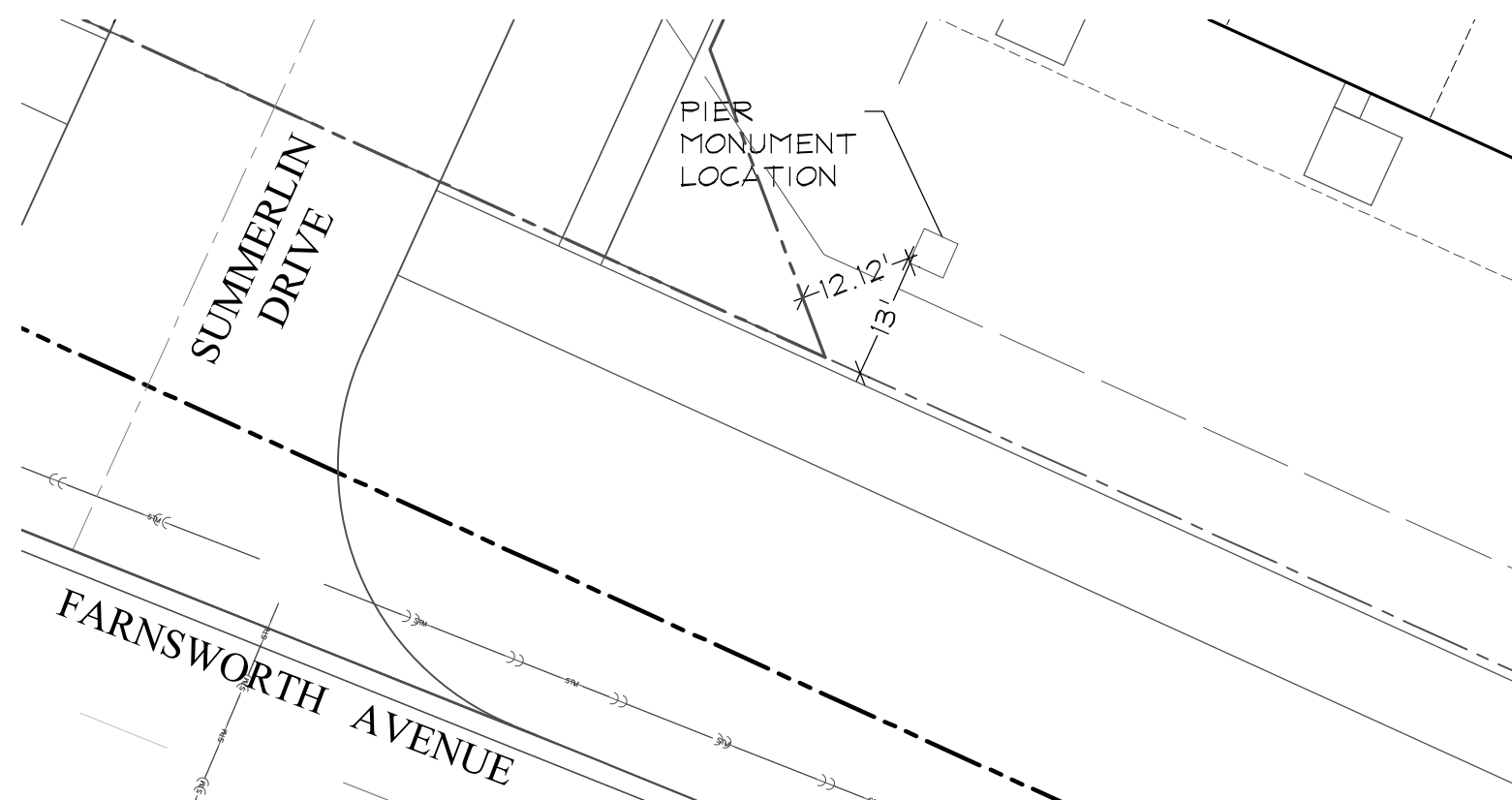
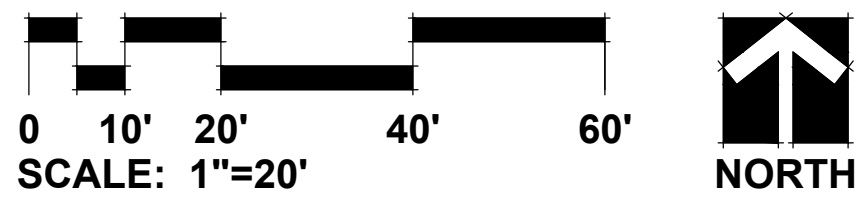
REAR MAIN MONUMENT ELEVATION
 SCALE: 1/2"=1'-0"



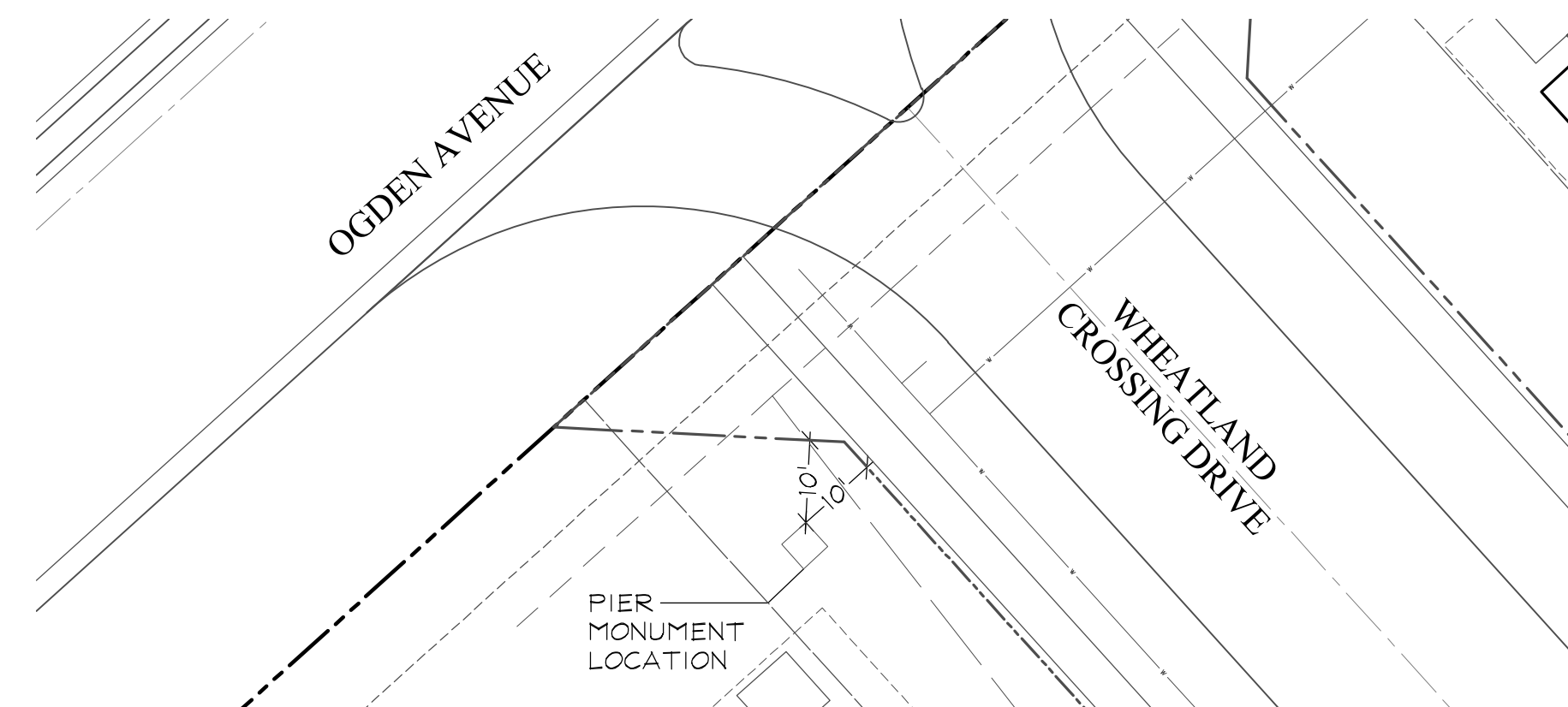
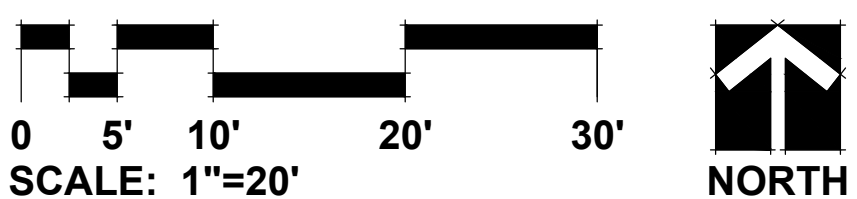
REAR PIER MONUMENT ELEVATION
 SCALE: 1/2"=1'-0"



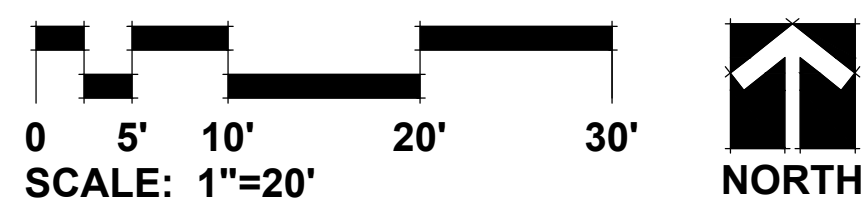
GROUND SIGN #1 & #2 LOCATION



GROUND SIGN #3 LOCATION



GROUND SIGN #4 LOCATION



WHEATLAND CROSSING
 AURORA, ILLINOIS
MONUMENT DETAILS

REVISIONS	DATE
03	12.14.2023
02	08.23.2023
01	04.20.2023

DATE: 11.7.2022
 PROJECT NO.: DR2074
 DRAWN: CLE
 CHECKED: DHS
 SHEET NO.





GARY R. WEBER
ASSOCIATES, INC.
LAND PLANNING
ECOLOGICAL CONSULTING
LANDSCAPE ARCHITECTURE
402 WEST LIBERTY DRIVE
WHEATON, ILLINOIS 60187
PHONE: 630-668-7197

CLIENT

D-R-HORTON

America's Builder
1750 E. GOLF ROAD, SUITE 925
SCHAUMBURG, ILLINOIS 60173
CIVIL ENGINEER

CEMCON, LTD.
2280 WHITE OAK CIRCLE, SUITE 100
AURORA, ILLINOIS 60502

WHEATLAND CROSSING
AURORA, ILLINOIS

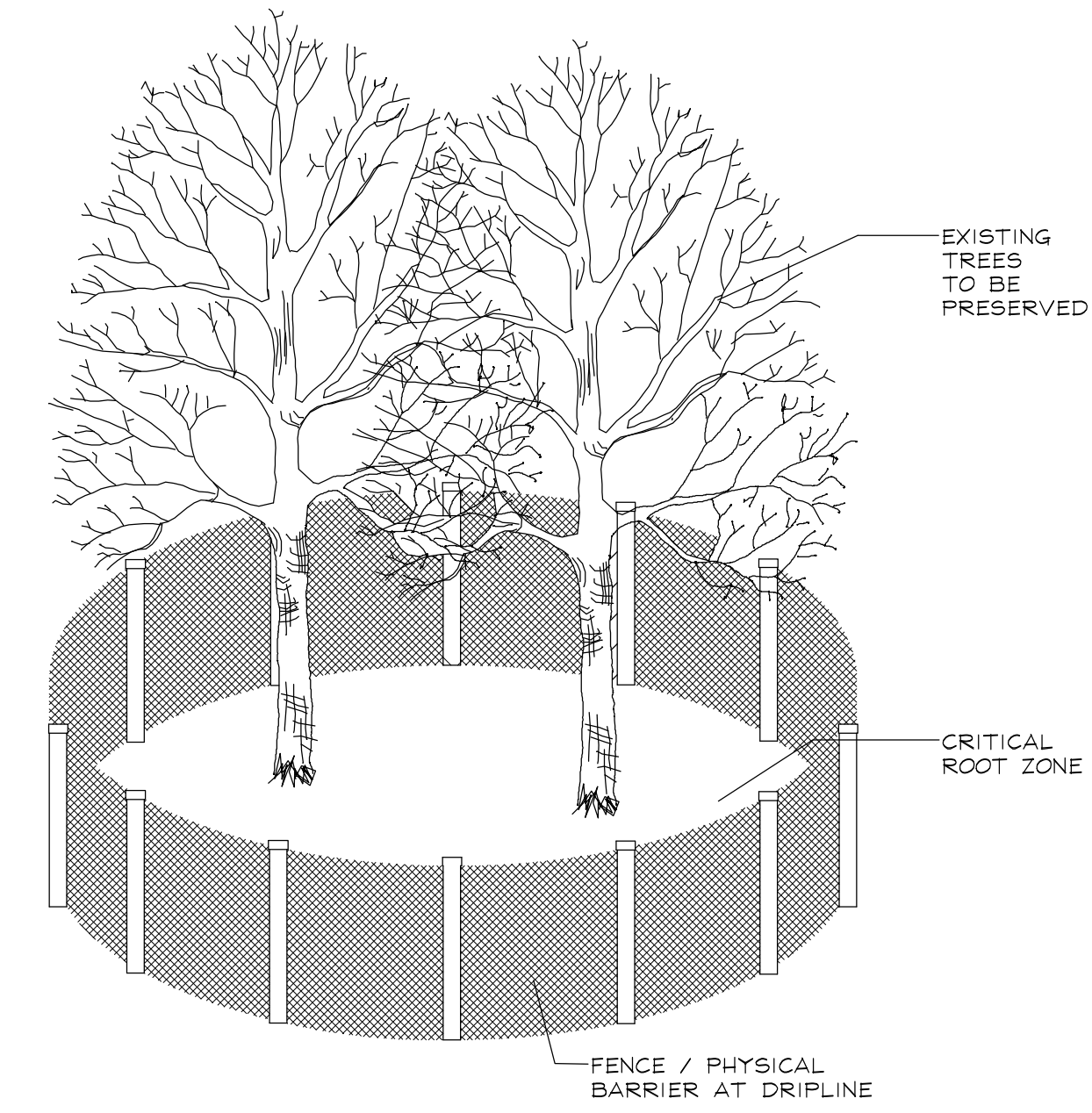
TREE PRESERVATION PLAN

NO.	DATE
03	12.14.2023
02	08.23.2023
01	04.20.2023

REVISIONS

DATE	11.7.2022
PROJECT NO.	DR2074
DRAWN	CLE
CHECKED	DHS
SHEET NO.	

8 OF 11



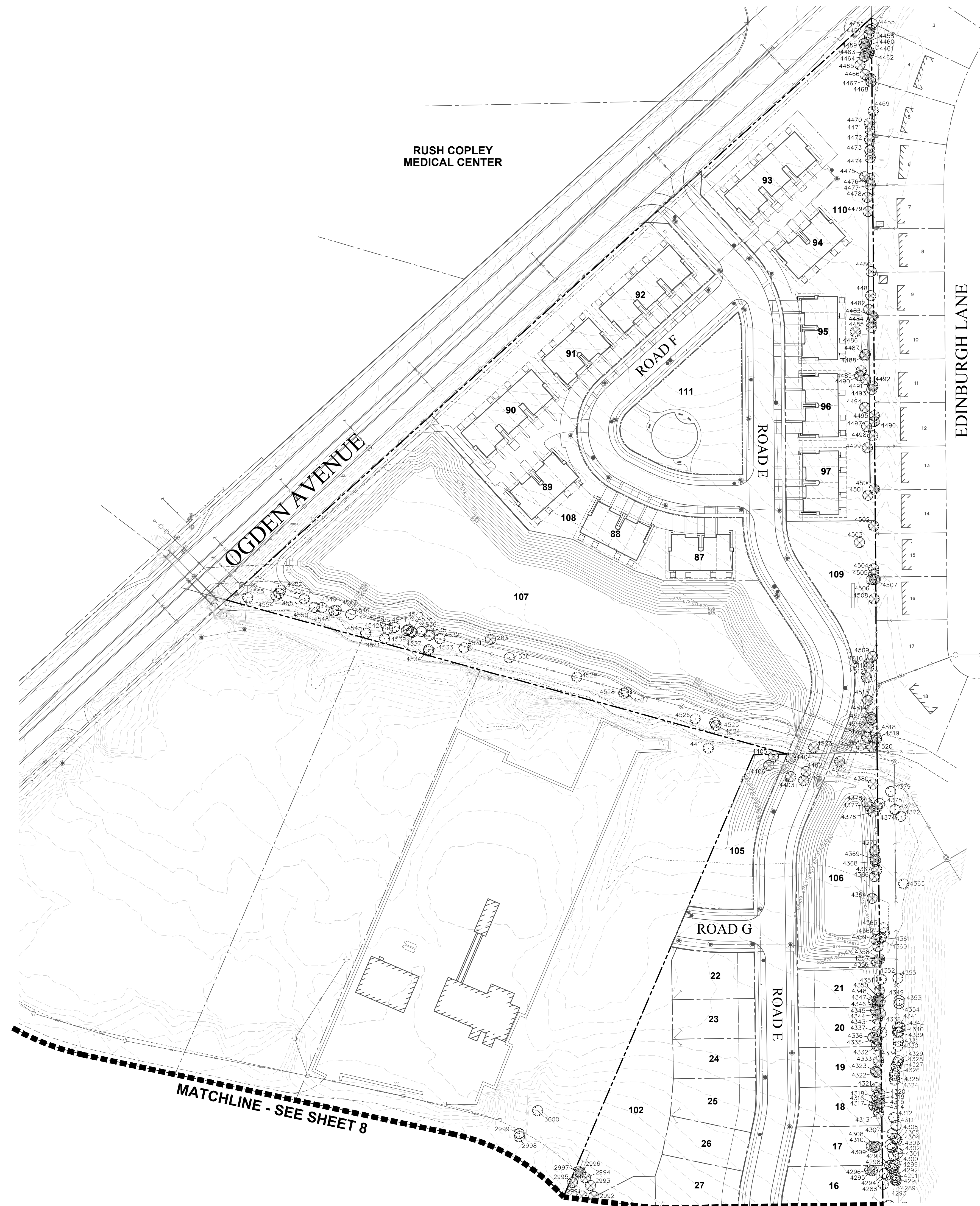
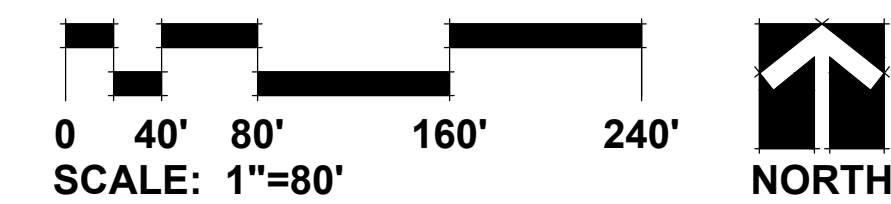
TREE PRESERVATION DETAIL
(NOT TO SCALE)
SEE NOTES

TREE PRESERVATION NOTES

- 48" high snow fence or wood barriers shall extend to the dripline of the tree or tree mass whenever possible, shall be installed before construction begins, and should not be removed until the completion of construction.
- All accidental damage to existing trees that are to be preserved shall be promptly treated as required in accordance with recognized horticultural practices and the instructions of the professional Arborist, Landscape Architect or Horticulturist.
- Broken or badly bruised branches shall be removed with a clean cut. If recommended by the professional Arborist, Landscape Architect or Horticulturist.
- Care shall be exercised by the contractors to protect all overhead limbs and branches from damage by contact with material, machinery or equipment and by damage from engine exhaust.
- Contractors shall protect trees and vegetation against spills or discharge of fuels, lubricating oils, hydraulic fluids, anti-freeze and coolants, calcium chloride, lime and all other similar hydrocarbons, organic chemicals, and other materials which can be harmful.
- When underground utilities are proposed within 5' of a preserved tree trunk, they must be augered if possible.

LEGEND

- TREE TO BE PRESERVED
- TREE TO BE REMOVED





GARY R. WEBER
ASSOCIATES, INC.
LAND PLANNING
ECOLOGICAL CONSULTING
LANDSCAPE ARCHITECTURE
402 WEST LIBERTY DRIVE
WHEATON, ILLINOIS 60187
PHONE: 630.668.7197

CLIENT

D-R HORTON

America's Builder

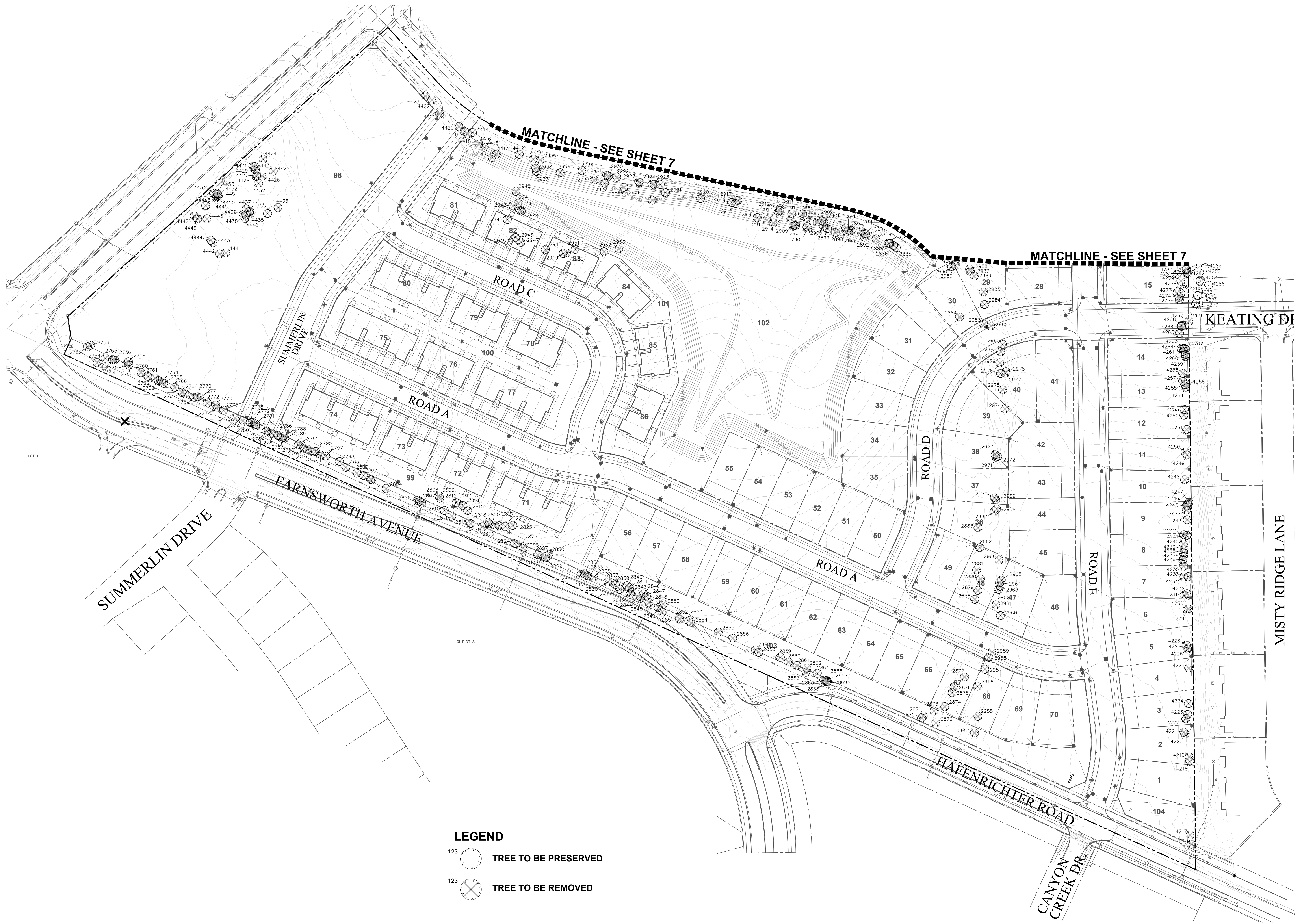
1750 E. GOLF ROAD, SUITE 925
SCHAUMBURG, ILLINOIS 60173

CIVIL ENGINEER

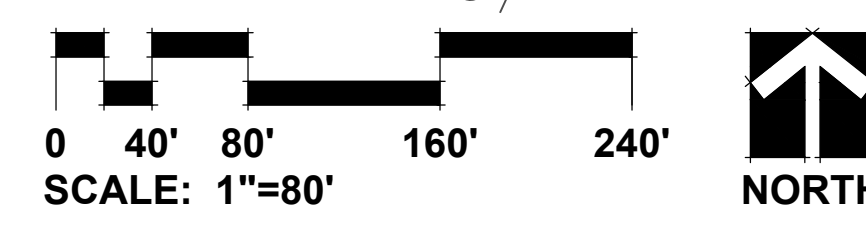
CEMCON, LTD.

2280 WHITE OAK CIRCLE, SUITE 100
AURORA, ILLINOIS 60502

WHEATLAND CROSSING
AURORA, ILLINOIS
TREE PRESERVATION PLAN



- LEGEND**
- 123 TREE TO BE PRESERVED
 - 123 TREE TO BE REMOVED



REVISIONS	DATE
03	12.14.2023
02	08.23.2023
01	04.20.2023

DATE	11.7.2022
PROJECT NO.	DR2074
DRAWN	CLE
CHECKED	DHS
SHEET NO.	



TAG NO.	SCIENTIFIC NAME	COMMON NAME	DBH (inches)	DESCRIPTION	RATING	NOTES	Remove or Preserve
2751	<i>Acer negundo</i>	Box Elder	13	Poor	4	Crown Lean, Lean, 10% Dead Branches	Remove
2752	<i>Morus alba</i>	White Mulberry	19, 14, 13	Poor	4	Split Risk, Lean, Cavity at Base, 10% Dead Branches	Remove
2753	<i>Juglans nigra</i>	Black Walnut	22	Good	2	Healed Trunk Scar, Slight Lean	Remove
2754	<i>Juglans nigra</i>	Black Walnut	28	Good	2	Dead Leader, Slight Lean	Remove
2755	<i>Ulmus americana</i>	American Elm	10	Poor	3	Crowded by Dead, Strong Crown Lean	Remove
2756	<i>Morus alba</i>	White Mulberry	13, 12	Poor	4	Split Risk, Strong Lean, Crowded, Crown Lean	Remove
2757	<i>Morus alba</i>	White Mulberry	24, 9	Poor	4	Cavity, Split Risk, Lean, Resprouts, Strong Lean	Remove
2758	<i>Ulmus americana</i>	American Elm	9	Poor	4	Lean, Crown Lean, Unbalanced	Remove
2759	<i>Morus alba</i>	White Mulberry	7, 10	Poor	4	Cavity at Base, Split Risk, 7" Leader Mostly Dead	Remove
2760	<i>Morus alba</i>	White Mulberry	34	Poor	4	Split, Lean, Unbalanced, Cavity, Trunk Scar, 20% Dead Branches	Remove
2761	<i>Morus alba</i>	White Mulberry	17	Poor	5	Cavities, Split, 60% Dead, Lean	Remove
2762	<i>Morus alba</i>	White Mulberry	19	Poor	4	Strong Lean, Resprouts, Split, 40% Dead	Remove
2763	<i>Ulmus americana</i>	American Elm	17	Fair	3	Crown Lean, 10% Dead Branches	Remove
2764	<i>Ulmus americana</i>	American Elm	9, 9	Poor	4	Strong Crown Lean, Split Risk, Resprouts	Remove
2765	<i>Ulmus americana</i>	American Elm	17	Fair	3	Cavity up High, Resprouts	Remove
2766	<i>Morus alba</i>	White Mulberry	22	Poor	4	High Up Split Risk, Cavity, Strong Crown Lean	Remove
2767	<i>Morus alba</i>	White Mulberry	39	Poor	4	Split Risk, Trunk Scar, Lean, 20% Dead Branches	Remove
2768	<i>Morus alba</i>	White Mulberry	15, 3	Poor	4	30% Dead Branches, Lean, Crown Lean, Cavity	Remove
2769	<i>Juglans nigra</i>	Black Walnut	24	Good	2		Remove
2770	<i>Morus alba</i>	White Mulberry	12	Poor	4	Cavity at Base, 30% Dead, Lean	Remove
2771	<i>Morus alba</i>	White Mulberry	10	Poor	4	Strong Lean, Cavity at Base, 20% Dead Branches	Remove
2772	<i>Ulmus americana</i>	American Elm	10, 7, 6	Poor	4	Missing Crown on 2 Leaders, Lean	Remove
2773	<i>Morus alba</i>	White Mulberry	14	Poor	4	Strong Lean, Resprouts, Crowded by Dead	Remove
2774	<i>Morus alba</i>	White Mulberry	24	Poor	4	Already Split, Strong Lean, Cavity, Resprouts	Remove
2775	<i>Morus alba</i>	White Mulberry	25	Poor	4	Cavity at Base, Strong Lean, High up Split Risk	Remove
2776	<i>Morus alba</i>	White Mulberry	22, 12	Poor	4	Strong Crown Lean, High up Split Risk, 10% Dead Branches	Remove
2777	<i>Morus alba</i>	White Mulberry	15	Poor	4	Cavity, Split Risk, Strong Lean	Remove
2778	<i>Morus alba</i>	White Mulberry	9	Poor	4	Crowded by 2779, Cavity, Strong Crown Lean	Remove
2779	<i>Morus alba</i>	White Mulberry	23	Poor	4	10% Dead Branches, Cavity, High up Split Risk, Dead Leader, Crown Lean	Remove
2780	<i>Morus alba</i>	White Mulberry	10	Poor	5	Trimmed for Powerlines, Resprouts	Remove
2781	<i>Morus alba</i>	White Mulberry	14	Poor	4	Strong Crown Lean, 40% Dead, Dead Leader	Remove
2782	<i>Morus alba</i>	White Mulberry	31	Poor	4	Split Risk, 20% Dead Branches, Lean	Remove
2783	<i>Morus alba</i>	White Mulberry	21, 20	Poor	4	Split Risk, 30% Dead Branches, Girdled Fence, Strong Lean	Remove
2784	<i>Morus alba</i>	White Mulberry	21	Poor	4	Split Risk, Strong Lean, 40% Dead Branches, Crown Lean	Remove
2785	<i>Morus alba</i>	White Mulberry	9	Poor	4	Strong Lean, Crown Lean, 20% Dead Branches, Cavity	Remove
2786	<i>Celtis occidentalis</i>	Hackberry	11	Good	2	Slight Lean	Remove
2787	<i>Morus alba</i>	White Mulberry	11, 11	Poor	5	Split Risk, 50% Dead, Resprouts	Remove
2788	<i>Morus alba</i>	White Mulberry	16	Poor	4	Strong Lean, Split Risk, Crown Lean, 10% Dead Branches	Remove
2789	<i>Morus alba</i>	White Mulberry	25	Poor	4	Split Risk, Cavity, Crowded by Dead	Remove
2790	<i>Morus alba</i>	White Mulberry	11, 10	Poor	4	Lean, Crown Lean, Trunk Scar, Split Risk	Remove
2791	<i>Juglans nigra</i>	Black Walnut	11	Fair	3	Lean, 10% Dead Branches	Remove
2792	<i>Morus alba</i>	White Mulberry	14	Poor	4	Cavity at Base, Trunk Scar, Crown Lean	Remove
2793	<i>Morus alba</i>	White Mulberry	9	Poor	5	Missing 50% of Crown Lean	Remove
2794	<i>Morus alba</i>	White Mulberry	18, 11	Poor	4	Split Risk, Strong Lean, Cavity at Crotch, Trunk Scar	Remove
2795	<i>Morus alba</i>	White Mulberry	13	Poor	4	Multiple Trunk Scars, Strong Crown Lean, Lean	Remove
2796	<i>Morus alba</i>	White Mulberry	14, 14	Poor	4	Cavity, Split Risk, Strong Lean, 20% Dead Branches	Remove
2797	<i>Celtis occidentalis</i>	Hackberry	31	Fair	3	Growing Around Barbed Wire, Lean, 20% Dead Branches, Near Power	Remove
2798	<i>Celtis occidentalis</i>	Hackberry	12, 4	Fair	3	Crown Lean	Remove
2799	<i>Morus alba</i>	White Mulberry	56	Poor	4	Split Risk, Cavity, 20% Dead Branches, Crown Lean, Strong Lean	Remove
2800	<i>Unknown</i>	Unknown	11	Dead	6		Remove
2801	<i>Morus alba</i>	White Mulberry	15, 15	Poor	4	Split Risk, Strong Lean, Resprouts	Remove
2802	<i>Morus alba</i>	White Mulberry	11	Poor	4	Lean, Crown Lean	Remove
2803	<i>Morus alba</i>	White Mulberry	18, 16	Poor	4	10" Leader Dead with Resprouts, Cavities, Lean	Remove
2804	<i>Celtis occidentalis</i>	Hackberry	22	Fair	3	Crown Lean, Trimmed Around Powerlines, Healing Trunk Scar	Remove
2805	<i>Morus alba</i>	White Mulberry	11, 11	Poor	4	10% Dead Branches, Crown Lean, Cavity, Lean	Remove
2806	<i>Morus alba</i>	White Mulberry	18, 4	Poor	4	Resprouts, Lean, Crown Lean	Remove
2807	<i>Morus alba</i>	White Mulberry	16	Poor	5	Horizontal Growth, Cavity, 30% Dead Branches	Remove
2808	<i>Populus deltoides</i>	Eastern Cottonwood	23	Good	2		Remove
2809	<i>Populus deltoides</i>	Eastern Cottonwood	18	Good	2	Unbalanced Because of 2808	Remove
2810	<i>Celtis occidentalis</i>	Hackberry	10	Good	2		Remove
2811	<i>Morus alba</i>	White Mulberry	26	Poor	4	Cavity at Base, Lean, 10% Dead Branches	Remove
2812	<i>Populus deltoides</i>	Eastern Cottonwood	11	Good	2	Unbalanced Because of 2813	Remove
2813	<i>Populus deltoides</i>	Eastern Cottonwood	14	Good	2	Slight Lean, 10% Dead Branches	Remove
2814	<i>Populus deltoides</i>	Eastern Cottonwood	14	Good	2	Slight Lean, 10% Dead Branches	Remove
2815	<i>Morus alba</i>	White Mulberry	14	Fair	3	Lean, Slightly Crowded Crown	Remove
2816	<i>Prunus serotina</i>	Black Cherry	12	Poor	4	Lean, Crown Lean, 10% Dead Branches	Remove
2817	<i>Unknown</i>	Unknown	10	Dead	6		Remove
2818	<i>Morus alba</i>	White Mulberry	12, 12, 9	Poor	4	Split Risk, Strong Lean, 30% Dead Branches	Remove
2819	<i>Morus alba</i>	White Mulberry	9	Poor	4	Strong Lean, Crown Lean, 30% Dead Branches	Remove
2820	<i>Morus alba</i>	White Mulberry	8	Fair	3	Slight Lean, Unbalanced	Remove
2821	<i>Morus alba</i>	White Mulberry	9	Poor	4	Strong Crown Lean, 20% Dead Branches	Remove
2822	<i>Morus alba</i>	White Mulberry	8	Poor	4	Lean, 30% Dead Branches, Crown Lean	Remove
2823	<i>Morus alba</i>	White Mulberry	9	Poor	4	Split Risk, Strong Crown Lean, 20% Dead Branches	Remove
2824	<i>Morus alba</i>	White Mulberry	35, 30	Poor	4	Cavity at Crotch, Split Risk, Strong Lean, 30% Dead Branches	Remove
2825	<i>Morus alba</i>	White Mulberry	18	Poor	4	Cavity, Strong Lean, 30% Dead Branches	Remove
2826	<i>Morus alba</i>	White Mulberry	14, 12, 10	Poor	4	Strong Lean, Cavity, Split Risk, Already Partially Split	Remove
2827	<i>Morus alba</i>	White Mulberry	26	Poor	4	Split Risk, Trunk Scar, Crowded by Powerlines	Remove
2828	<i>Morus alba</i>	White Mulberry	15, 9	Poor	4	Cavity at Crotch, Split Risk, Strong Lean, 30% Dead Branches	Remove
2829	<i>Morus alba</i>	White Mulberry	12	Poor	4	Lean, Crown Lean, 20% Dead Branches	Remove
2830	<i>Morus alba</i>	White Mulberry	11	Poor	4	Strong Crown Lean, Lean, 10% Dead Branches	Remove
2831	<i>Celtis occidentalis</i>	Hackberry	8	Fair	3	Healing Trunk Scar, Crown Lean	Remove
2832	<i>Celtis occidentalis</i>	Hackberry	8	Good	2	Slight Crown Lean	Remove
2833	<i>Celtis occidentalis</i>	Hackberry	10	Good	2	Slight Lean	Remove
2834	<i>Celtis occidentalis</i>	Hackberry	10	Good	2	Lean	Remove
2835	<i>Celtis occidentalis</i>	Hackberry	16	Good	2	Slight Lean	Remove
2836	<i>Acer negundo</i>	Box Elder	11, 9, 5	Dead	6		Remove
2837	<i>Acer negundo</i>	Box Elder	11	Good	2	Strong Lean, 10% Dead Branches	Remove
2838	<i>Juglans nigra</i>	Black Walnut	11	Good	2		Remove
2839	<i>Ulmus americana</i>	American Elm	14	Fair	3	Lean, Crown Lean, 10% Dead Branches	Remove
2840	<i>Celtis occidentalis</i>	Hackberry	14	Good	2		Remove
2841	<i>Morus alba</i>	White Mulberry	15	Poor	4	Lean, Vines, 20% Dead Branches, Split	Remove
2842	<i>Celtis occidentalis</i>	Hackberry	11	Poor	5	Lots of Resprouts, Trunk Scar, 80% Dead	Remove
2843	<i>Celtis occidentalis</i>	Hackberry	10	Fair	3	Unbalanced, Crowded by 2842	Remove
2844	<i>Morus alba</i>	White Mulberry	9	Poor	4	Cavity, Strong Lean, Resprouts	Remove
2845	<i>Morus alba</i>	White Mulberry	11, 10, 4	Poor	4	Split Risk, 20% Dead Branches, Resprouts	Remove
2846	<i>Acer negundo</i>	Box Elder	9	Poor	4	Strong Lean, 20% Dead Branches	Remove
2847	<i>Celtis occidentalis</i>	Hackberry	12	Good	2	15% Dead Branches	Remove
2848	<i>Morus alba</i>	White Mulberry	10, 3	Poor	4	Unbalanced, Lean, 10% Dead Branches	Remove
2849	<i>Prunus serotina</i>	Black Cherry	11, 10	Poor	4	Split Risk, Unbalanced, Lean	Remove
2850	<i>Ulmus americana</i>	American Elm	19	Poor	4	Strong Crown Lean, Lean, 20% Dead Branches	Remove
2851	<i>Ulmus americana</i>	American Elm	12, 9	Fair	3	Lean, Adjacent to Powerlines	Remove
2852	<i>Celtis occidentalis</i>	Hackberry	14	Fair	3	Slight Lean, Adjacent to Powerlines	Remove
2853	<i>Morus alba</i>	White Mulberry	11, 11	Poor	4	Split Risk, Strong Lean, Cavity at Crotch, 20% Dead Branches	Remove
2854	<i>Morus alba</i>	White Mulberry	13	Poor	4	Crowded, Lean, 10% Dead Branches	Remove
2855	<i>Morus alba</i>	White Mulberry	7	Poor	4	Split Risk, Crowded Crown, 10% Dead Branches	Remove
2856	<i>Unknown</i>	Unknown	13	Dead	6		Remove
2857	<i>Ulmus pumila</i>	Sibean Elm	24	Poor	4	Cavity at Base, Lean, Trimmed from Powerlines	Remove
2858	<i>Morus alba</i>	White Mulberry	14, 4	Poor	4	Cavity at Base, Lean, 20% Dead, Split Risk, Trimmed from Powerlines	Remove
2859	<i>Maclura pomifera</i>	Osage Orange	21	Poor	4	Crowded, Split Risk, Lean, 30% Dead Branches	Remove
2860	<i>Prunus serotina</i>	Black Cherry	14	Poor	4	Crown Lean, Vines, Lean, 30% Dead Branches	Remove
2861	<i>Celtis occidentalis</i>	Hackberry	12	Fair	3	Horizontal Growth on one Limb, 10% Dead Branches	Remove
2862	<i>Acer negundo</i>	Box Elder	8, 6, 4, 2	Poor	4	Strong Lean, Split Risk, 20% Dead Branches	Remove
2863	<i>Celtis occidentalis</i>	Hackberry	13	Poor	4	Multiple Trunk Scars, 40% Dead Branches	Remove
2864	<i>Maclura pomifera</i>	Osage Orange	8, 3, 3	Poor	4	Trunk Scar, Crown Lean, 30% Dead Branches, Crowded	Remove
2865	<i>Maclura pomifera</i>	Osage Orange	9	Poor	4	Strong Crown Lean, 40% Dead Branches, Lean	Remove
2866	<i>Maclura pomifera</i>	Osage Orange	11	Poor	4	Cavity, Vines, Crown Lean, 40% Dead Branches	Remove
2867	<i>Maclura pomifera</i>	Osage Orange	6, 4	Poor	4	Trunk Scar, Split Risk, 40% Dead Branches, Crown Lean	Remove
2868	<i>Maclura pomifera</i>	Osage Orange	11	Poor	4	Unbalanced, Crown Lean, Trunk Scar, 40% Dead Branches	Remove
2869	<i>Maclura pomifera</i>	Osage Orange	11	Poor	4	Crown Lean, Crowded, 40% Dead Branches	Remove
2870	<i>Morus alba</i>	White Mulberry	22, 9, 13	Poor	4	Crowded, Unbalanced, Crown Lean, Split Risk	Remove
2871	<i>Morus alba</i>	White Mulberry	15	Poor	4	Crowded, Unbalanced, Crown Lean	Remove
2872	<i>Ulmus pumila</i>	Sibean Elm	14	Poor	4	Slight Lean, Vines, 10% Dead	Remove
2873	<i>Morus alba</i>	White Mulberry	13, 6, 13, 13, 12	Poor	4	Cavity at Base, Split Risk, 20% Dead	Remove
2874	<i>Populus deltoides</i>	Eastern Cottonwood	12	Fair	3	Slight Lean, 10% Dead Branches	Remove
2875	<i>Morus alba</i>	White Mulberry	6, 7, 6, 8	Poor	4	Split Risk, Cavity at Crotch, 20% Dead	Remove
2876	<i>Morus alba</i>	White Mulberry	12, 28	Poor	4	Split Risk, Cavity, 20% Dead Branches	Remove
2877	<i>Unknown</i>	Unknown	10	Dead	6		Remove
2878	<i>Maclura pomifera</i>	Osage Orange	4, 26	Poor	4	Split Risk, Crown Lean, 20% Dead Branches	Remove
2879	<i>Morus alba</i>	White Mulberry	14, 4, 4	Poor	4	Split Risk, 30% Dead Branches	Remove
2880	<i>Prunus serotina</i>	Black Cherry	9, 4	Poor	4	Slight Crown Lean, 30% Dead Branches	Remove
2881	<i>Morus alba</i>	White Mulberry	12, 18, 8, 8, 12	Poor	5	Multiple Cavities, 30% Dead Leaders, Split Risk	Remove
2882	<i>Prunus serotina</i>	Black Cherry	10	Poor	4	Lean, Crown Lean, Vines	Remove
2883	<i>Acer negundo</i>	Box Elder	8	Poor	4	Lean, Crown Lean	Remove
2884	<i>Ulmus americana</i>	American Elm	7, 6, 8, 4, 3	Poor	4	Split Risk, Slight Lean	Remove
2885	<i>Prunus serotina</i>	Black Cherry	12	Poor	4	30% Dead Branches, Strong Lean	Remove
2886	<i>Prunus serotina</i>	Black Cherry	11	Poor	4	Slight Lean, Crowded	Remove
2887	<i>Populus deltoides</i>	Eastern Cottonwood	26	Poor	4	Strong Lean, Strong Crown Lean	Remove
2888	<i>Populus deltoides</i>	Eastern Cottonwood	16	Poor	4	Slight Lean, Strong Crown Lean	Remove
2889	<i>Populus deltoides</i>	Eastern Cottonwood	24	Poor	4	Dead Leaning On, 20% Dead Branches	Remove
2890	<i>Populus deltoides</i>	Eastern Cottonwood	21	Poor	4	Lean, Strong Crown Lean	Remove
2891	<i>Populus deltoides</i>	Eastern Cottonwood	19	Poor	4	Slight Lean, Strong Crown Lean	Remove
2892	<i>Prunus serotina</i>	Black Cherry	11, 9	Poor	4	Dead Leader, Crown Lean, 20% Dead	Remove
2893	<i>Populus deltoides</i>	Eastern Cottonwood	14	Poor	4	Lean, Crown Lean, 10% Dead Branches	Remove
2894	<i>Populus deltoides</i>	Eastern Cottonwood	27	Fair	3	Slight Lean, 10% Dead Branches	Remove
2895	<i>Populus deltoides</i>	Eastern Cottonwood	12	Poor	4	Lean, Crown Lean	Remove
2896	<i>Prunus serotina</i>	Black Cherry	20	Poor	4	Lean, Strong Crown Lean, Unbalanced	Remove
2897	<i>Morus alba</i>	White Mulberry	9, 3	Poor	4	Lean, Strong Crown Lean, 30% Dead Branches	Remove
2898	<i>Morus alba</i>	White Mulberry	8, 3	Poor	4	Strong Crown Lean, Unbalanced, Vines	Remove
2899	<i>Prunus serotina</i>	Black Cherry	14	Dead	6		Remove
2900	<i>Morus alba</i>	White Mulberry	16	Poor	4	Strong Crown Lean, Unbalanced, Vines	Remove

TAG NO.	SCIENTIFIC NAME	COMMON NAME	DBH (inches)	DESCRIPTION	RATING	NOTES	Remove or Preserve
2901	<i>Morus alba</i>	White Mulberry	10, 7	Poor	4	Split Risk, 20% Dead Branches	Remove
2902	<i>Morus alba</i>	White Mulberry	14	Poor	4	Lean, Strong Crown Lean	Remove
2903	<i>Salix nigra</i>	Black Willow	10, 14, 12	Poor	5	Split, Split Risk, Strong Lean, Strong Crown Lean	Remove
2904	<i>Morus alba</i>	White Mulberry	6, 4	Poor	4	Lean, Strong Crown Lean, Unbalanced	Remove
2905	<i>Unknown</i>	Unknown	10	Dead	6		Remove
2906	<i>Prunus serotina</i>	Black Cherry	10	Poor	4	Slight Lean, Strong Crown Lean, Unbalanced	Remove
2907	<i>Morus alba</i>	White Mulberry	8	Poor	4	Trunk Scar, Strong Crown Lean, Unbalanced	Remove
2908	<i>Morus alba</i>	White Mulberry	8, 3	Poor	4	Trunk Scar, Strong Crown Lean, Unbalanced	Remove
2909	<i>Morus alba</i>	White Mulberry	7, 10	Poor	4	Lean, Strong Crown Lean, Unbalanced	Remove
2910	<i>Populus deltoides</i>	Eastern Cottonwood	25	Poor	4	Lean, Crown Lean, 10% Dead Branches	

TAG NO.	SCIENTIFIC NAME	COMMON NAME	DBH (inches)	DESCRIPTION	RATING	NOTES	Remove or Preserve
4266	<i>Morus alba</i>	White Mulberry	14	Poor	4	Lean, Crown Lean, Unbalanced, 10% Dead Branches	Remove
4267	<i>Prunus serotina</i>	Black Cherry	21, 14	Poor	4	50% Dead Branches, Strong Lean, Vines	Remove
4268	<i>Morus alba</i>	White Mulberry	10	Poor	4	Near ground, Lean, Vines	Remove
4269	<i>Acer negundo</i>	Box Elder	8	Poor	4	Strong Lean, 40% Dead Branches	Remove
4270	<i>Acer negundo</i>	Box Elder	8, 8, 7	Poor	4	Strong Lean, Crown Lean, Split Risk	Remove
4271	<i>Acer negundo</i>	Box Elder	8, 6, 4	Poor	4	40% Dead Branches, Strong Lean	Remove
4272	<i>Morus alba</i>	White Mulberry	8, 6, 3, 2	Poor	4	Split Risk, Lean, Crown Lean	Remove
4273	<i>Acer negundo</i>	Box Elder	8	Poor	4	Strong Lean, 10% Dead Branches	Remove
4274	<i>Morus alba</i>	White Mulberry	9, 12, 10, 3	Poor	4	Split Risk, Lean, Unbalanced, 20% Dead Branches	Remove
4275	<i>Morus alba</i>	White Mulberry	10, 3, 4	Poor	4	Strong Lean, Crowded by 4274	Remove
4276	<i>Celtis occidentalis</i>	Hackberry	10, 3, 4	Good	2	Slight Lean	Remove
4277	<i>Celtis occidentalis</i>	Hackberry	11	Fair	3	Lean, Unbalanced	Remove
4278	<i>Prunus serotina</i>	Black Cherry	8	Fair	3	20% Dead Branches, Vines, Straight	Remove
4279	<i>Acer negundo</i>	Box Elder	9, 3	Dead	6	90% Dead	Remove
4280	<i>Prunus serotina</i>	Black Cherry	14	Poor	4	Lean, 30% Dead Branches, Crowded by Dead	Remove
4281	<i>Prunus serotina</i>	Black Cherry	10	Poor	4	Strong Lean, Vines, 30% Dead Branches	Remove
4282	<i>Morus alba</i>	White Mulberry	18, 9, 9, 8, 5, 4	Poor	4	Split Risk, Strong Lean, Crown Lean, Vines	Remove
4283	<i>Acer negundo</i>	Box Elder	10	Poor	4	Strong Lean	Remove
4284	<i>Acer saccharinum</i>	Silver Maple	11	Poor	4	Lean, Crown Lean, Crowded by Box Elder	Remove
4285	<i>Acer saccharinum</i>	Silver Maple	8, 6	Poor	4	Lean, Crown Lean, Crowded by Box Elder	Remove
4286	<i>Tilia cordata</i>	Littleleaf Linden	14	Good	2	Healing Trunk Scar, Girdling Root	Remove
4287	<i>Tilia cordata</i>	Littleleaf Linden	10	Fair	3	Crowded Branching	Remove
4288	<i>Acer negundo</i>	Box Elder	10	Dead	6	Vines Only	Remove
4289	<i>Populus deltoides</i>	Eastern Cottonwood	10	Fair	3	Lean	Remove
4290	<i>Populus deltoides</i>	Eastern Cottonwood	8	Fair	3	Lean	Remove
4291	<i>Salix nigra</i>	Black Willow	8	Poor	4	Strong Lean	Remove
4292	<i>Populus deltoides</i>	Eastern Cottonwood	10	Poor	4	Lean, Strong Crown Lean	Remove
4293	<i>Populus deltoides</i>	Eastern Cottonwood	10	Fair	3	Slight Crown Lean	Remove
4294	<i>Prunus serotina</i>	Black Cherry	13	Dead	6	Vines Only	Remove
4295	<i>Morus alba</i>	White Mulberry	9, 9, 7, 7	Poor	4	50% Dead Branches, Split Risk, Lean	Remove
4296	<i>Morus alba</i>	White Mulberry	17, 17	Poor	4	Split Risk, 30% Dead Branches, Already Split	Remove
4297	<i>Acer saccharinum</i>	Silver Maple	8, 4	Fair	3	Split Risk, Lean	Remove
4298	<i>Populus deltoides</i>	Eastern Cottonwood	12	Fair	3	Slight Lean	Remove
4299	<i>Populus deltoides</i>	Eastern Cottonwood	14	Poor	4	Lean, Crown Lean, Healing Trunk Scar	Remove
4300	<i>Acer saccharinum</i>	Silver Maple	12	Poor	4	Lean, Strong Crown Lean	Remove
4301	<i>Acer saccharinum</i>	Silver Maple	8	Poor	4	Lean, Strong Crown Lean	Remove
4302	<i>Populus deltoides</i>	Eastern Cottonwood	6, 8	Poor	4	Lean, Crown Lean, Split Risk	Remove
4303	<i>Populus deltoides</i>	Eastern Cottonwood	11	Poor	4	Lean, Crown Lean	Remove
4304	<i>Acer saccharinum</i>	Silver Maple	9, 8	Poor	4	Split Risk, Strong Lean	Remove
4305	<i>Populus deltoides</i>	Eastern Cottonwood	9	Poor	4	Lean, Unbalanced	Remove
4306	<i>Salix nigra</i>	Black Willow	8	Poor	4	Lean, Strong Crown Lean	Remove
4307	<i>Salix nigra</i>	Black Willow	8	Poor	4	Lean, Crown Lean	Remove
4308	<i>Morus alba</i>	White Mulberry	11, 10, 8, 5, 6	Poor	5	Split Risk, 60% Dead Branches, Lean, Peeling Bark	Remove
4309	<i>Prunus serotina</i>	Black Cherry	10	Dead	6	Vines	Remove
4310	<i>Morus alba</i>	White Mulberry	11	Poor	4	Lean, Strong Crown Lean, Vines	Remove
4311	<i>Acer saccharinum</i>	Silver Maple	10	Poor	4	Lean, High Up Split Risk	Remove
4312	<i>Acer saccharinum</i>	Silver Maple	8, 4	Poor	4	Strong Lean, Crown Lean, Trunk Scar	Remove
4313	<i>Morus alba</i>	White Mulberry	20	Poor	4	Strong Lean, Split Risk, Cavity, Already Split, 50% Dead Branches	Remove
4314	<i>Prunus serotina</i>	Black Cherry	16, 9, 7	Poor	5	80% Dead, Strong Lean, Large Cavity	Remove
4315	<i>Morus alba</i>	White Mulberry	15, 8, 4, 4	Poor	4	Unbalanced, Resprouts, 60% Dead, Cavity	Remove
4316	Unknown		11	Dead	6		Remove
4317	<i>Morus alba</i>	White Mulberry	21	Poor	4	Lean, Strong Crown Lean, 30% Dead	Remove
4318	<i>Prunus serotina</i>	Black Cherry	25	Poor	4	Lean, Unbalanced, Missing Limb, Crown Lean	Remove
4319	<i>Morus alba</i>	White Mulberry	13	Poor	4	Lean, Strong Crown Lean, 30% Dead Branches	Remove
4320	<i>Morus alba</i>	White Mulberry	12	Poor	4	Cavity, Strong Lean, Broken Crown, Vines	Remove
4321	<i>Morus alba</i>	White Mulberry	16	Poor	4	Lean, Unbalanced, Crown Lean, 20% Dead Branches	Remove
4322	<i>Prunus serotina</i>	Black Cherry	13, 13, 8, 7	Poor	4	Strong Lean, Crown Lean, 10% Dead Branches, Split Risk	Remove
4323	<i>Morus alba</i>	White Mulberry	8	Poor	4	Lean, Unbalanced, Split Risk	Remove
4324	<i>Acer saccharinum</i>	Silver Maple	8	Poor	4	Lean, Strong Crown Lean	Remove
4325	<i>Acer saccharinum</i>	Silver Maple	12	Poor	4	Lean, Strong Crown Lean, Unbalanced	Remove
4326	<i>Acer saccharinum</i>	Silver Maple	13	Poor	4	Lean, Crown Lean, High up Split Risk	Remove
4327	<i>Acer saccharinum</i>	Silver Maple	10	Poor	4	Split Risk, Lean, 10% Dead Branches	Remove
4328	<i>Acer saccharinum</i>	Silver Maple	8, 3, 2	Poor	4	Split Risk, Strong Lean, 10% Dead Branches	Remove
4329	<i>Salix nigra</i>	Black Willow	14	Poor	4	Slight Lean, Crown Lean, 20% Dead Branches	Remove
4330	<i>Acer saccharinum</i>	Silver Maple	12, 7, 6	Poor	4	Strong Crown Lean, Lean, Split Risk	Remove
4331	<i>Acer saccharinum</i>	Silver Maple	13	Poor	4	High up Split Risk, Lean	Remove
4332	<i>Prunus serotina</i>	Black Cherry	19, 17, 9	Poor	4	Split Risk, Strong Lean, 30% Dead Branches	Remove
4333	<i>Prunus serotina</i>	Black Cherry	11	Poor	4	Strong Lean, Strong Crown Lean, 60% Dead	Remove
4334	<i>Morus alba</i>	White Mulberry	8, 8, 6	Poor	4	Split Risk, Strong Crown Lean, 30% Dead Branches	Remove
4335	<i>Morus alba</i>	White Mulberry	11, 3	Poor	4	Strong Lean, High up Split Risk, 20% Dead Branches	Remove
4336	<i>Morus alba</i>	White Mulberry	12	Poor	4	Lean, Strong Crown Lean, 30% Dead Branches	Remove
4337	<i>Prunus serotina</i>	Black Cherry	8	Dead	6	Lean, Strong Crown Lean, Vines	Remove
4338	<i>Morus alba</i>	White Mulberry	13, 12	Poor	5	80% Dead, Cavity at Base, Lean, Strong Crown Lean	Remove
4339	<i>Populus deltoides</i>	Eastern Cottonwood	12	Poor	4	Lean, Crown Lean	Remove
4340	<i>Salix nigra</i>	Black Willow	13	Poor	4	Strong Lean, 30% Dead Branches	Remove
4341	<i>Salix nigra</i>	Black Willow	15	Poor	4	Lean, Strong Crown Lean, 30% Dead Branches	Remove
4342	<i>Populus deltoides</i>	Eastern Cottonwood	15	Poor	4	Lean, Crown Lean, Unbalanced, 20% Dead Branches	Remove
4343	<i>Prunus serotina</i>	Black Cherry	31	Poor	4	High up Split Risk, Lean, Unbalanced	Remove
4344	<i>Acer negundo</i>	Box Elder	9	Dead	6	90% Dead	Remove
4345	<i>Prunus serotina</i>	Black Cherry	24	Poor	4	High up Split Risk, Lean	Remove
4346	<i>Prunus serotina</i>	Black Cherry	27, 21	Poor	4	Strong Lean, Strong Crown Lean	Remove
4347	<i>Morus alba</i>	White Mulberry	8, 7, 6, 3, 3, 3	Poor	5	Split Risk, Already Split, Strong Lean	Remove
4348	<i>Prunus serotina</i>	Black Cherry	14	Poor	4	Strong Lean, Strong Crown Lean, 40% Dead Branches, Cavity	Remove
4349	<i>Morus alba</i>	White Mulberry	9, 3, 3	Poor	5	Split Risk, Strong Lean, 70% Dead, Strong Crown Lean	Remove
4350	<i>Morus alba</i>	White Mulberry	8, 2, 2	Poor	4	Lean, Strong Crown Lean, 60% Dead Branches	Remove
4351	<i>Morus alba</i>	White Mulberry	23, 23	Poor	4	Strong Lean, Split Risk, 30% Dead Branches	Remove
4352	<i>Morus alba</i>	White Mulberry	8, 12, 12, 14, 3, 3	Poor	4	Split Risk, 30% Dead, Strong Lean, Cavity	Remove
4353	<i>Salix nigra</i>	Black Willow	17	Poor	4	Strong Lean, Strong Crown Lean, 10% Dead Branches	Remove
4354	<i>Salix nigra</i>	Black Willow	15, 13	Poor	4	Split Risk, Strong Lean, Insect Holes	Remove
4355	<i>Acer saccharinum</i>	Silver Maple	10, 3, 2	Poor	4	High up Split Risk, Crowded at Base	Remove
4356	<i>Prunus serotina</i>	Black Cherry	28	Poor	5	Split with Large Cavity, High up Split Risk	Remove
4357	<i>Morus alba</i>	White Mulberry	19, 7	Poor	4	Split Risk, Strong Lean, 70% Dead Branches	Remove
4358	<i>Morus alba</i>	White Mulberry	11	Poor	4	Strong Lean, Strong Crown Lean, Vines, 30% Dead Branches	Remove
4359	<i>Prunus serotina</i>	Black Cherry	5	Poor	4	Sawdust, 70% Dead, Split Risk, Vines, Crown Lean	Remove
4360	<i>Morus alba</i>	White Mulberry	9	Poor	4	Lean, Crown Lean, 10% Dead Branches	Remove
4361	<i>Morus alba</i>	White Mulberry	17	Poor	4	Lean, Strong Crown Lean, 60% Dead Branches	Remove
4362	<i>Morus alba</i>	White Mulberry	15	Poor	4	Split Risk, Strong Crown Lean, 50% Dead Branches	Remove
4363	<i>Morus alba</i>	White Mulberry	25	Poor	4	Cavity, Split, Vines Girdling, Strong Crown Lean	Remove
4364	<i>Morus alba</i>	White Mulberry	28, 7, 13, 6	Poor	5	Already Split, Strong Crown Lean, Cavity	Remove
4365	<i>Acer negundo</i>	Box Elder	10	Fair	3	Lean, Vines	Remove
4366	<i>Prunus serotina</i>	Black Cherry	14	Poor	4	Strong Lean, Crown Lean, Mushrooms, 10% Dead Branches	Remove
4367	<i>Morus alba</i>	White Mulberry	10, 33	Poor	4	Cavity, Split Risk, 30% Dead Branches	Remove
4368	<i>Morus alba</i>	White Mulberry	6	Poor	4	Split Risk, Strong Lean, Unbalanced, Vines, Cavity	Remove
4369	<i>Morus alba</i>	White Mulberry	9, 7, 3	Poor	4	Split Risk, Cavity, Strong Crown Lean	Remove
4370	<i>Morus alba</i>	White Mulberry	23, 33	Poor	5	70% Dead, Split, Unbalanced, Cavity	Remove
4371	<i>Salix nigra</i>	Black Willow	12, 12	Poor	4	Split Risk, Strong Lean, 20% Dead Branches, Vines	Remove
4372	<i>Acer negundo</i>	Box Elder	9	Dead	6		Remove
4373	<i>Morus alba</i>	White Mulberry	16, 9	Poor	4	Split Risk, Crown Lean, Unbalanced, 30% Dead Branches	Remove
4374	<i>Morus alba</i>	White Mulberry	26, 4	Poor	4	40% Dead Branches, Split Risk	Remove
4375	<i>Ulmus americana</i>	American Elm	12	Good	2	10% Dead Branches, Crowded by 4374	Remove
4376	Unknown		17	Dead	6		Remove
4377	Unknown		16	Dead	6		Remove
4378	<i>Ulmus americana</i>	American Elm	11	Fair	3	30% Dead Branches, Vines	Remove
4379	<i>Morus alba</i>	White Mulberry	7, 7, 9, 5, 2	Poor	4	30% Dead Branches, Vines, Split Risk, Lean	Remove
4380	<i>Acer negundo</i>	Box Elder	8	Dead	6	Vines Only	Remove
4401	<i>Celtis occidentalis</i>	Hackberry	8, 6	Good	2		Remove
4402	<i>Salix nigra</i>	Black Willow	13, 16, 7, 7, 6, 6	Poor	4	Horizontal Growth, 20% Dead	Remove
4403	<i>Celtis occidentalis</i>	Hackberry	13, 16, 7, 7, 6, 6	Good	2	Unbalanced	Remove
4404	<i>Ulmus americana</i>	American Elm	15	Good	2	Slight Lean	Remove
4405	<i>Salix nigra</i>	Black Willow	48, 48	Poor	4	Large Cavities, Strong Lean, Split Risk	Remove
4406	<i>Morus alba</i>	White Mulberry	9, 5	Dead	6	High up Split Risk, Lean, Crown Lean	Remove
4407	Unknown		8, 15	Dead	6		Remove
4408	Unknown		9	Dead	6		Remove
4409	<i>Ulmus americana</i>	American Elm	9	Dead	6		Remove
4410	<i>Morus alba</i>	White Mulberry	14	Poor	4	Unbalanced, Split Risk, Lean, 40% Dead Branches	Remove
4411	<i>Morus alba</i>	White Mulberry	15	Poor	4	Split Risk, Lean, Cavity, 40% Dead Branches	Remove
4412	<i>Populus deltoides</i>	Eastern Cottonwood	9, 9	Poor	4	Strong Lean, Unbalanced, 10% Dead Branches	Remove
4413	<i>Morus alba</i>	White Mulberry	11	Fair	3	Well Balanced, 10% Dead Branches	Remove
4414	<i>Ulmus americana</i>	American Elm	14	Good	2	Vines, 10% Dead Branches	Remove
4415	<i>Ulmus americana</i>	American Elm	8	Poor	4	30% Dead Branches, Vines	Remove
4416	<i>Morus alba</i>	White Mulberry	10, 12, 3	Poor	4	Split Risk, Lean, 30% Dead Branches	Remove
4417	<i>Morus alba</i>	White Mulberry	10, 3, 3	Poor	4	Unbalanced, Lean, Crown Lean	Remove
4418	<i>Morus alba</i>	White Mulberry	6, 3	Poor	4	Unbalanced, Lean, Crown Lean, Split Risk	Remove
4419	<i>Morus alba</i>	White Mulberry	7, 8, 7, 5	Poor	4	Split Risk, Crown Lean, 20% Dead Branches	Remove
4420	<i>Morus alba</i>	White Mulberry	12	Poor	4	Crown Lean, 30% Dead Branches, Vines	Remove
4421	<i>Morus alba</i>	White Mulberry	11, 6, 5, 3	Poor	4	Split Risk, Crown Lean, 10% Dead Branches	Remove
4422	<i>Morus alba</i>	White Mulberry	8, 4, 4, 2, 2	Poor	4	Split Risk, 20% Dead Branches	Remove
4423	<i>Populus deltoides</i>	Eastern Cottonwood	11	Fair	3	Slight Lean	Remove
4424	<i>Morus alba</i>	White Mulberry	10, 8, 9, 10, 12, 4	Poor	4	Cavity at Crotch, 30% Dead Branches, Split Risk	Remove
4425	<i>Morus alba</i>	White Mulberry	12, 8, 8, 6, 3, 4	Poor	4	Split Risk, Unbalanced, 40% Dead Branches	Remove
4426	<i>Morus alba</i>	White Mulberry	11, 7, 9, 7, 10	Poor	4	Crowded, Split Risk, Unbalanced	Remove
4427	<i>Morus alba</i>	White Mulberry	14, 7, 4, 3, 3	Poor	4	Split Risk, 30% Dead Branches, Lean	Remove
4428	<i>Morus alba</i>	White Mulberry	8	Poor	4	Lean, Unbalanced, 20% Dead Branches	Remove
4429	<i>Morus alba</i>	White Mulberry	8	Poor	4	Lean, Unbalanced, 20% Dead Branches	Remove
4430	<i>Morus alba</i>	White Mulberry	11	Poor	4	30% Dead Branches, Lean, Crown Lean	Remove
4431	<i>Morus alba</i>	White Mulberry	8, 4	Poor	4	20% Dead Branches, Unbalanced, Crown Lean	Remove
4432	<i>Morus alba</i>	White Mulberry	10, 7, 6, 9, 7	Poor	4	40% Dead Branches, Split Risk, Crowded	Remove
4433	<i>Ulmus americana</i>	American Elm	50	Poor	4	20% Dead Branches	Remove
4434	<i>Morus alba</i>	White Mulberry	17, 7, 8, 2	Poor	4	Crowded, Split Risk	Remove
4435	<i>Morus alba</i>	White Mulberry	11	Poor	4	Lean, 30% Dead Branches, Crown Lean	Remove

TAG NO.	SCIENTIFIC NAME	COMMON NAME	DBH (inches)	DESCRIPTION	RATING	NOTES	Remove or Preserve
4436	<i>Morus alba</i>	White Mulberry	8, 6, 5, 3	Poor	4	Cavity at Crotch, Split Risk, Crown Lean	Remove
4437	<i>Morus alba</i>	White Mulberry	12, 7, 4, 3, 2	Poor	4	Lean, Unbalanced, 20% Dead Branches	Remove
4438	<i>Morus alba</i>	White Mulberry	15, 17	Poor	4	Unbalanced, Lean, Crowded	Remove
4439	<i>Morus alba</i>	White Mulberry	11	Poor	4	Crowded by 4438, Lean, Unbalanced	Remove
4440	<i>Morus alba</i>	White Mulberry	14	Poor	4	Unbalanced, Lean, 20% Dead Branches	Remove
4441	<i>Celtis occidentalis</i>	Hackberry	9	Poor	4	Large Trunk Scar, Unbalanced	Remove
4442	<i>Picea canadensis</i>	Norway Spruce	30, 40' Tall	Poor	4	Cavity, Strong Lean, Unbalanced	Remove
4443	<i>Morus alba</i>	White Mulberry	8, 15	Poor	4	Unbalanced, 20% Dead Branches, Vines, Lean	Remove
4444	<i>Morus alba</i>	White Mulberry	25, 12, 8	Poor	4	Split Risk, 30% Dead Branches, Cavity	Remove
4445	<i>Morus alba</i>	White Mulberry	10, 9				