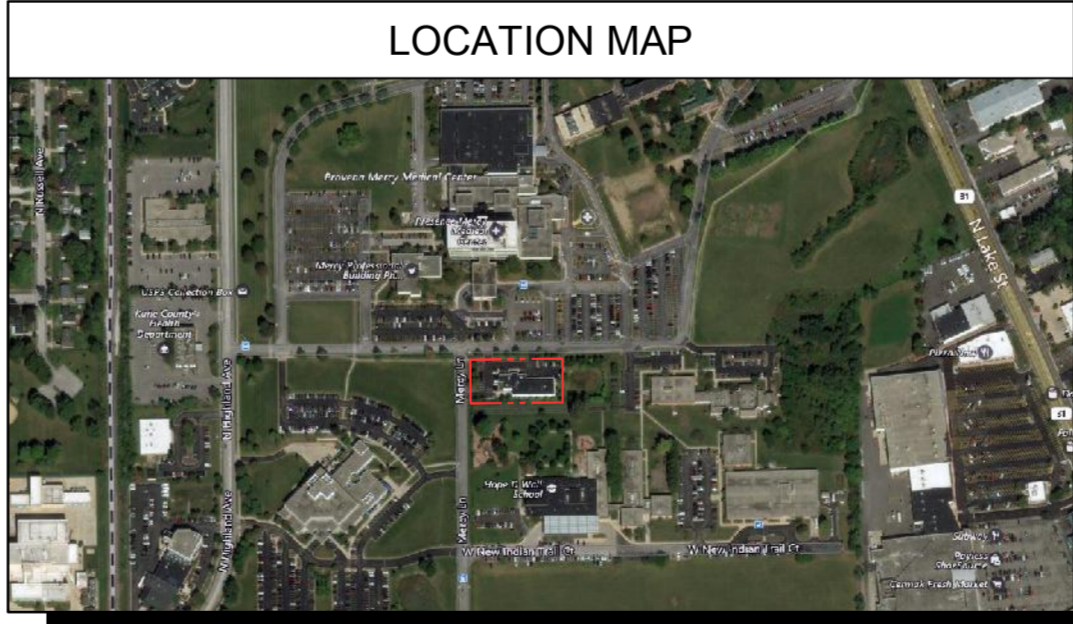
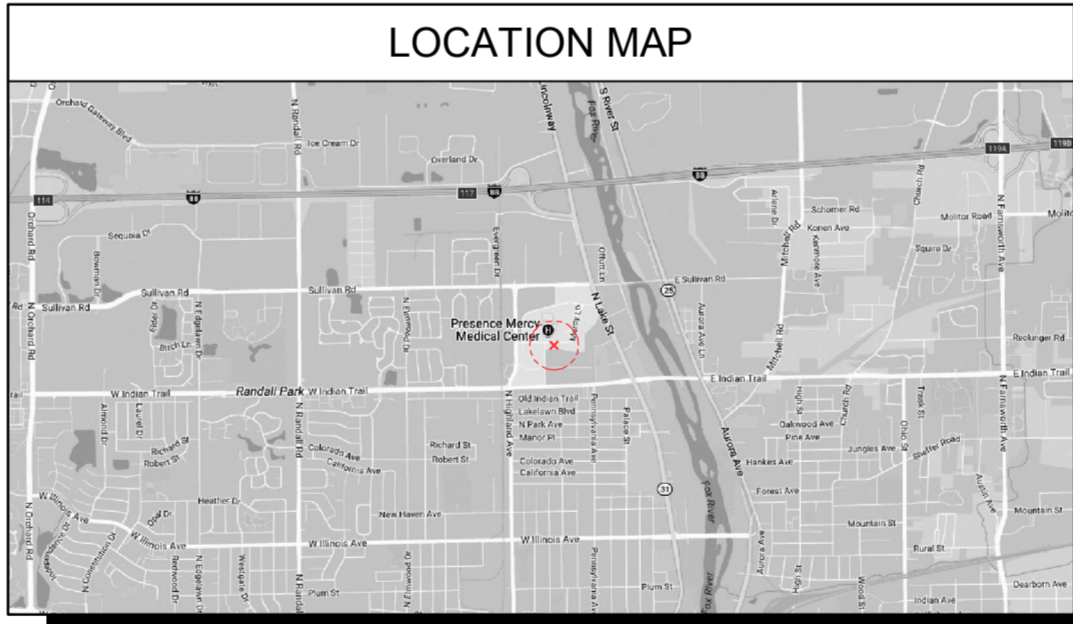
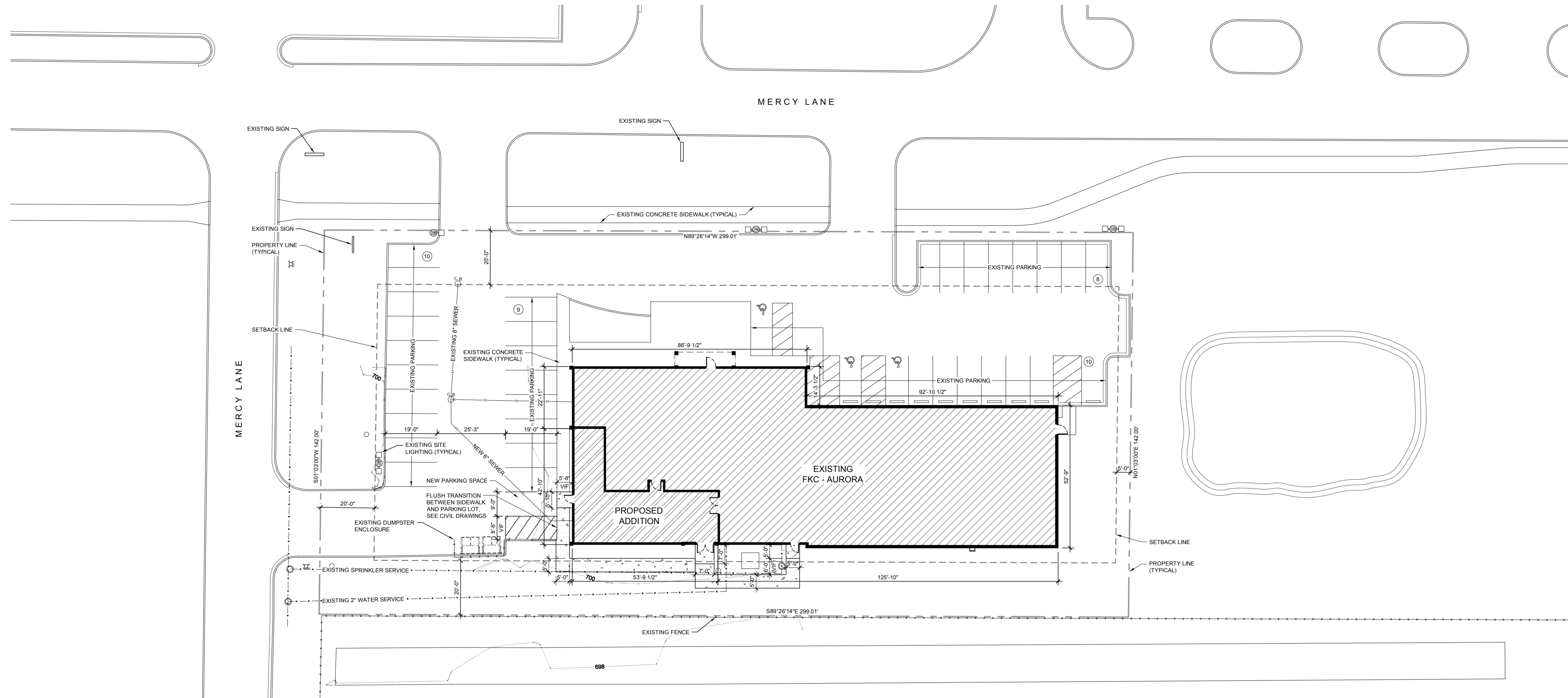
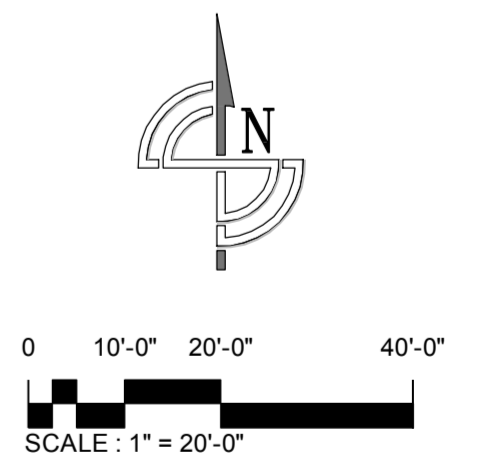


FINAL PLAN FOR 455 MERCY LANE



Development Data Table: Final Plan					
Description	Value	Unit	Description	Value	Unit
a) Tax/Parcel Identification Number(s) (PINs): 15-09-400-007			ii. Total Number of Residential Dwelling Units	0	units
			i. Gross Density	0.00	square feet
			ii. Net Density	0.00	Net Density
b) Proposed land use(s): Business (Ambulatory Care Facility)			iii. Number of Single Family Dwelling Units	0	units
			i. Gross Density	0.00	square feet
			ii. Net Density	0.00	Net Density
			iii. Unit Square Footage (average)	0	square feet
c) Total Property Size	0.97470196	Acres	iv. Bedroom Mix	0%	% 1 bed
	42456	Square feet		0%	% 2 bed
d) Total Lot Coverage	30772	Square feet		20%	% 3 bed
	72%	Percent		80%	% 4 bed
e) Open space / landscaping	11666	Square feet	v. Number of Single Family Corner Lots	0	units
	28%	Percent	vi. Number of Single Family Attached Dwelling Units	0	units
f) Land to be dedicated to the School District	0	Acres	i. Gross Density	0.00	square feet
g) Land to be dedicated to the Park District	0	Acres	ii. Net Density	0.00	Net Density
h) Number of parking spaces provided (individually accessible)	37	spaces	iii. Unit Square Footage (average)	0	square feet
	37	spaces	iv. Bedroom Mix	0%	% 1 bed
	34	spaces		90%	% 2 bed
	0	spaces		10%	% 3 bed
	0	spaces		0%	% 4 bed
	3	spaces	m) Number of Multifamily Dwelling Units	0	units
	0	spaces	i. Gross Density	0.00	square feet
	0	spaces	ii. Net Density	0.00	Net Density
	0	spaces	iii. Unit Square Footage (average)	0	square feet
ii. Number of buildings	1	building	iv. Bedroom Mix	0%	Efficiency
	1	building		40%	% 1 bed
	10256	square feet		50%	% 2 bed
	10256	square feet		10%	% 3 bed



Prepared By:
ARCHITECT

Christopher D. Kidd, AIA, ALA, RIBA
Illinois License # 001-016182
Expires : November 30, 2018



#	DATE	REVISION DESCRIPTION



CKA Registration # 184-003003

Final Plan for:
FKC - Aurora (Shell)
455 Mercy Lane
Aurora, Illinois 60506

These drawings, as instruments of service, remain the property of the Architect or Engineer. Any changes, publication, or use of any kind is prohibited unless expressly authorized by said party.

Copyright 2018

Drafted By: JES

Checked By: EAH

Date Drafted: 09/10/2018

Project #: 17159-02

A100

FINAL PLAN