



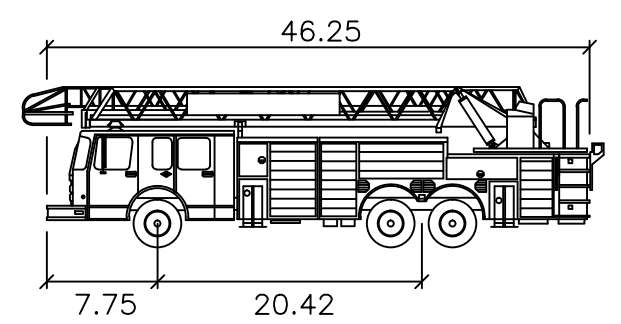
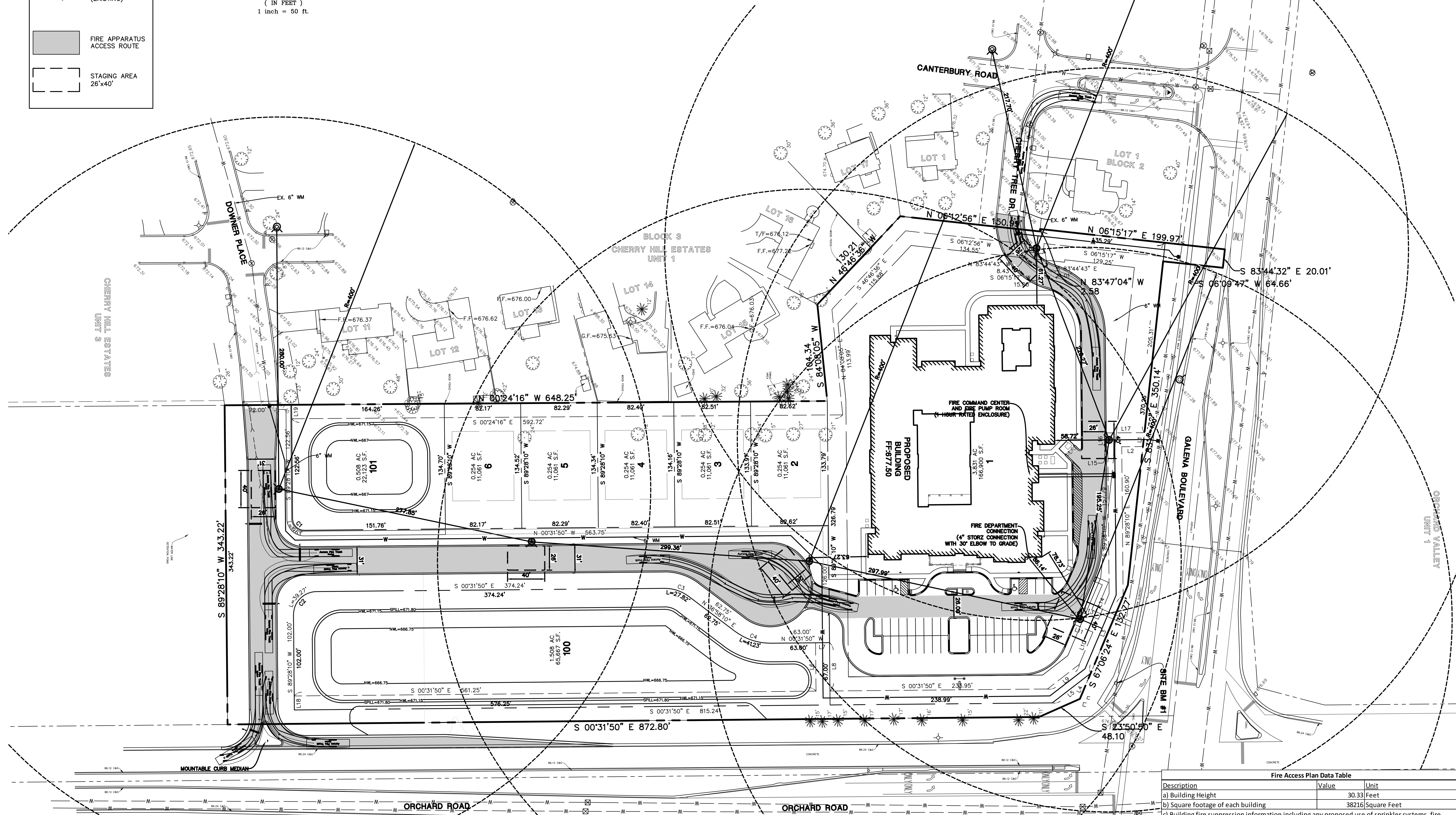
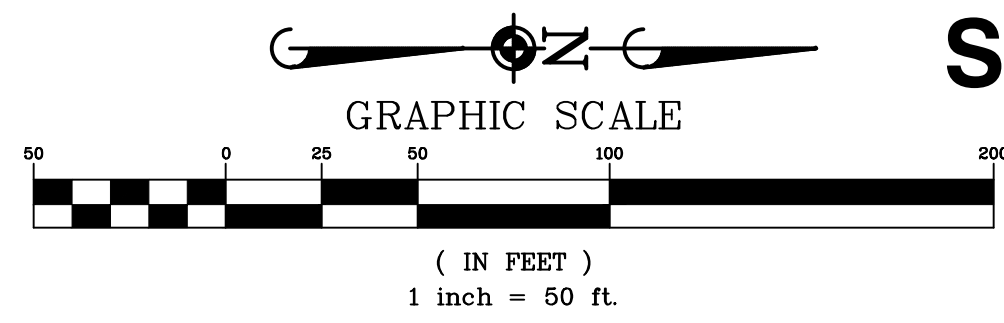


# FIRE ACCESS PLAN FOR BICKFORD OF AURORA SUBDIVISION

## SW CORNER OF GALENA BOULEVARD AND ORCHARD ROAD AURORA, IL

**LEGEND**

-  FIRE HYDRANT (PROPOSED)
-  FIRE HYDRANT (EXISTING)
-  FIRE APPARATUS ACCESS ROUTE
-  STAGING AREA 26'x40'



Fire Access Plan Data Table		
Description	Value	Unit
a) Building Height	30.33	Feet
b) Square Footage of each building	38216	Square Feet
c) Building fire suppression information including any proposed use of sprinkler systems, fire alarm systems, whether fire extinguishers are needed: full NFPA 13 sprinkler system with a wet system in the conditioned space and a dry system in the attic. Full Fire alarm system with addressable smoke alarms in the units. Extinguishers will be located within 15 feet of each exit and within 150' travel distance, all mechanical rooms, maintenance room, and at the kitchen range		
d) General description of business to be conducted within each building including: will there be rack storage in the building, will there be storage of combustible materials over twelve feet in height, clearance of sprinkler heads and stored materials (18 inch minimum): 60-unit senior living facility containing 44 assisted living units and 16 memory care units. The facility is created to provide 24-hour assisted care for residents due to age and/or memory issues. Some residents are incapable of self-preservation in the event of an emergency, so the facility will be classified as an institutional Group (I-2) occupancy. There will be no rack storage or storage of combustible materials over 12 feet in height. The clearance of sprinkler heads and stored materials will be a minimum of 18 inches.		

DATE	REVISIONS	BY	SL
07-31-15	REVISED PER CITY COMMENTS		SL
07-10-15	REVISED PER CITY COMMENTS		SL

**Manhard CONSULTING LTD.**

400 Westside Avenue, Vernon Hills, IL 60061 Tel: (847) 884-0088 www.manhard.com  
 Civil Engineers - Surveyors - Water Resources Engineers - Water & Wastewater Engineers  
 Construction Managers - Environmental Scientists - Landscape Architects - Planners

BICKFORD OF AURORA  
AURORA, ILLINOIS  
FIRE ACCESS PLAN FOR BICKFORD OF AURORA SUBDIVISION

OWNER: BICKFORD OF AURORA, INC. 301 N. ROYALTY RD. SUITE 100 AURORA, IL 60402  
 PROJECT MGR: SL  
 PROJECT ASSOC: SL  
 DRAWN BY: MRH  
 DATE: 09-03-15  
 SCALE: 1"=50'

PETITIONER: MANHARD CONSULTING LTD. 700 SPRINGER DRIVE COMMERCE, IL 60010

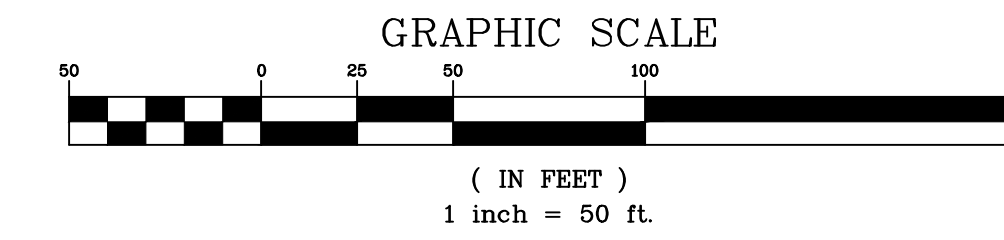
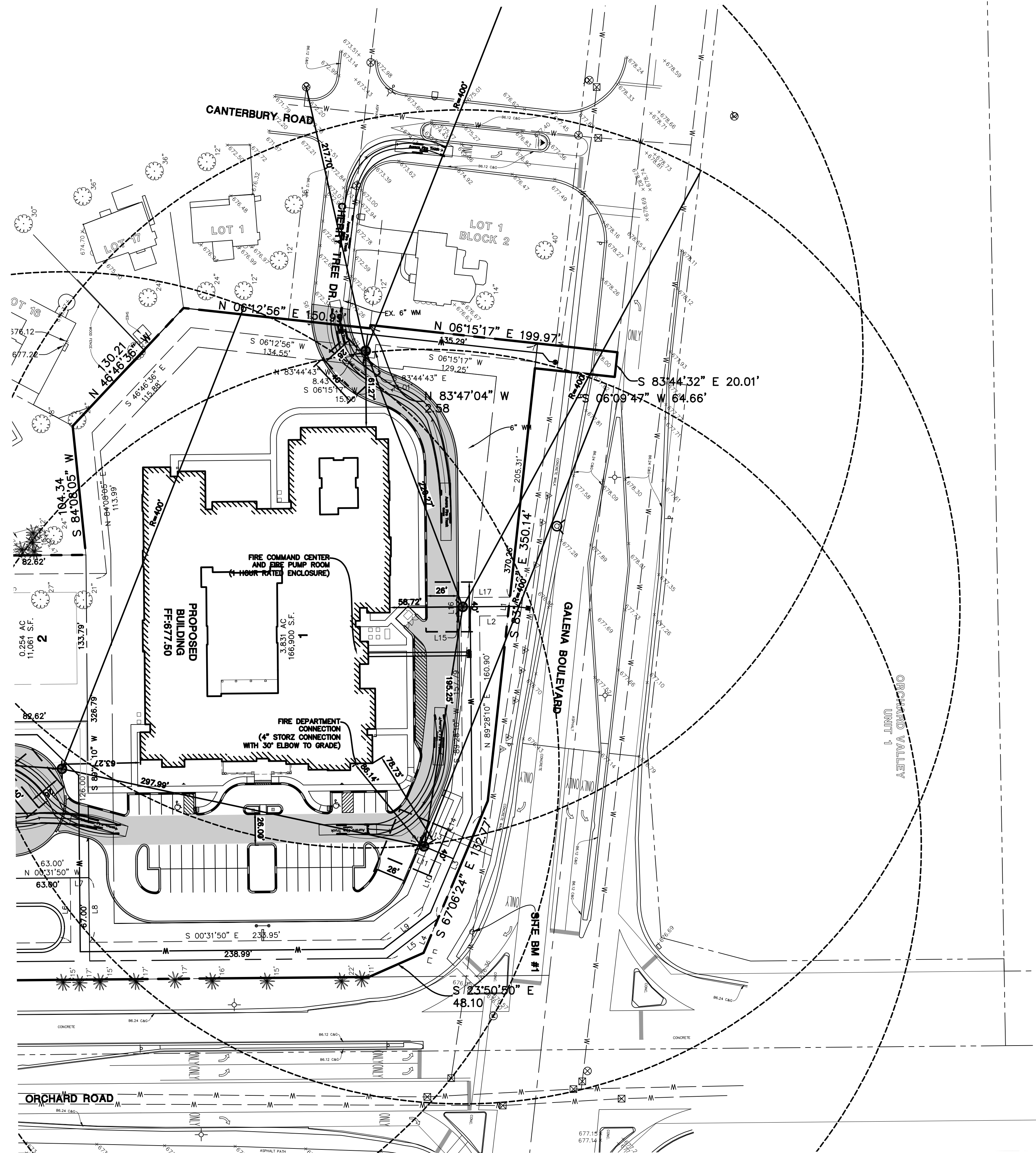
SHEET 1 OF 1  
 CBC.AUL.01  
 © 2015 ALL RIGHTS RESERVED

**ISSUED FOR FINAL ENGINEERING**

# FIRE ACCESS PLAN FOR BICKFORD OF AURORA SUBDIVISION - LOT 1

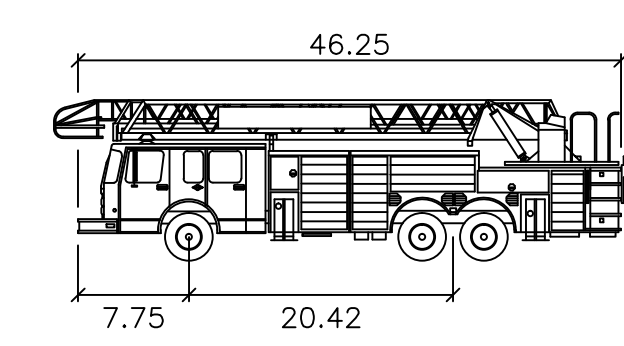
## SW CORNER OF GALENA BOULEVARD AND ORCHARD ROAD

### AURORA, IL



LEGEND	
	FIRE HYDRANT (PROPOSED)
	FIRE HYDRANT (EXISTING)
	FIRE APPARATUS ACCESS ROUTE
	STAGING AREA 26'x40'

Fire Access Plan Data Table		
Description	Value	Unit
a) Building Height	30.33	Feet
b) Square footage of each building	38216	Square Feet
c) Building fire suppression information including any proposed use of sprinkler systems, fire alarm systems, whether fire extinguishers are needed:		
Full NFPA 13 sprinkler system with a wet system in the conditioned space and a dry system in the attic. Full fire alarm system with addressable smoke alarms in the units. Extinguishers will be located within 15 feet of each exit and within 150' travel distance, all mechanical rooms, maintenance room, and at the kitchen range		
d) General description of business to be conducted within each building including: will there be rack storage in the building, will there be storage of combustible materials over twelve feet in height, clearance of sprinkler heads and stored materials (18 inch minimum):		
60-unit senior living facility containing 44 assisted living units and 16 memory care units. The facility is created to provide 24-hour assisted care for residents due to age and/or memory issues. Some residents are incapable of self-preservation in the event of an emergency, so the facility will be classified as an institutional Group (I-2) occupancy. There will be no rack storage or storage of combustible materials over 12 feet in height. The clearance of sprinkler heads and stored materials will be a minimum of 18 inches.		



Aurora Fire Truck  
Width : 8.33 feet  
Track : 8.00 feet  
Lock to Lock Time : 6.0  
Steering Angle : 40.7

DATE	REVISIONS	SL
07-31-15	REVISED PER CITY COMMENTS	SL
07-10-15	REVISED PER CITY COMMENTS	SL

**Manhard CONSULTING LTD.**  
 600 Westside Avenue, Vernon Hills, IL 60061  
 Tel: (847) 884-0098 Fax: (847) 884-0099  
 www.manhard.com  
 Civil Engineers - Surveyors - Water Resources Engineers - Water & Wastewater Engineers  
 Construction Managers - Environmental Scientists - Landscape Architects - Planners

**BICKFORD OF AURORA**  
**AURORA, ILLINOIS**  
**FIRE ACCESS PLAN FOR BICKFORD OF AURORA SUBDIVISION - LOT 1**

OWNER: BICKFORD OF AURORA, INC. 301  
 13750 S. MARIEN RD.,  
 GAITHERSBURG, MD 20878  
 PROJECT: BICKFORD OF AURORA SUBDIVISION  
 PROJECT ASSOCIATE: MANHARD CONSULTING LTD.  
 700 SPRINGER DRIVE  
 COMMERCE, IL 60110  
 PROJECT MGR: SL  
 PROJ. ASSOC: SL  
 DRAWN BY: MRH  
 DATE: 09-03-15  
 SCALE: 1"=50'  
 SHEET  
**1 OF 1**  
 CBC.AUL01

ISSUED FOR FINAL ENGINEERING

September 25, 2015 - 11:58 Rev. Name: P:\Cbaul01\Aurora\Final\Drawings\Exhibits\Emb\Fire\_Plan\_Emb1.dwg Updated: Bk\_bhaocac