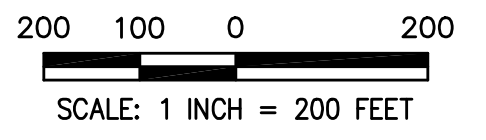


PRELIMINARY PLAT FOR WHEATLAND CROSSING

PART OF SECTION 1-37-8 IN KENDALL COUNTY AND SECTION 36-38-8 IN KANE COUNTY.



DEVELOPMENT DATA TABLE: PRELIMINARY PLAT OF WHEATLAND CROSSING	
Description	Value / Unit
A. TAX PARCEL IDENTIFICATION NUMBER(S) (PINs):	15-36-400-032 03-01-127-006
B. SUBDIVIDED AREA	57.54 Ac. / 2,506,718 S.F.
C. PROPOSED R.O.W. DEDICATION	12.71 Ac. / 553,865 S.F. 7,817 L.F. of Centerline
D. PROPOSED NEW EASEMENTS	27.05 Ac. / 1,178,182 S.F.

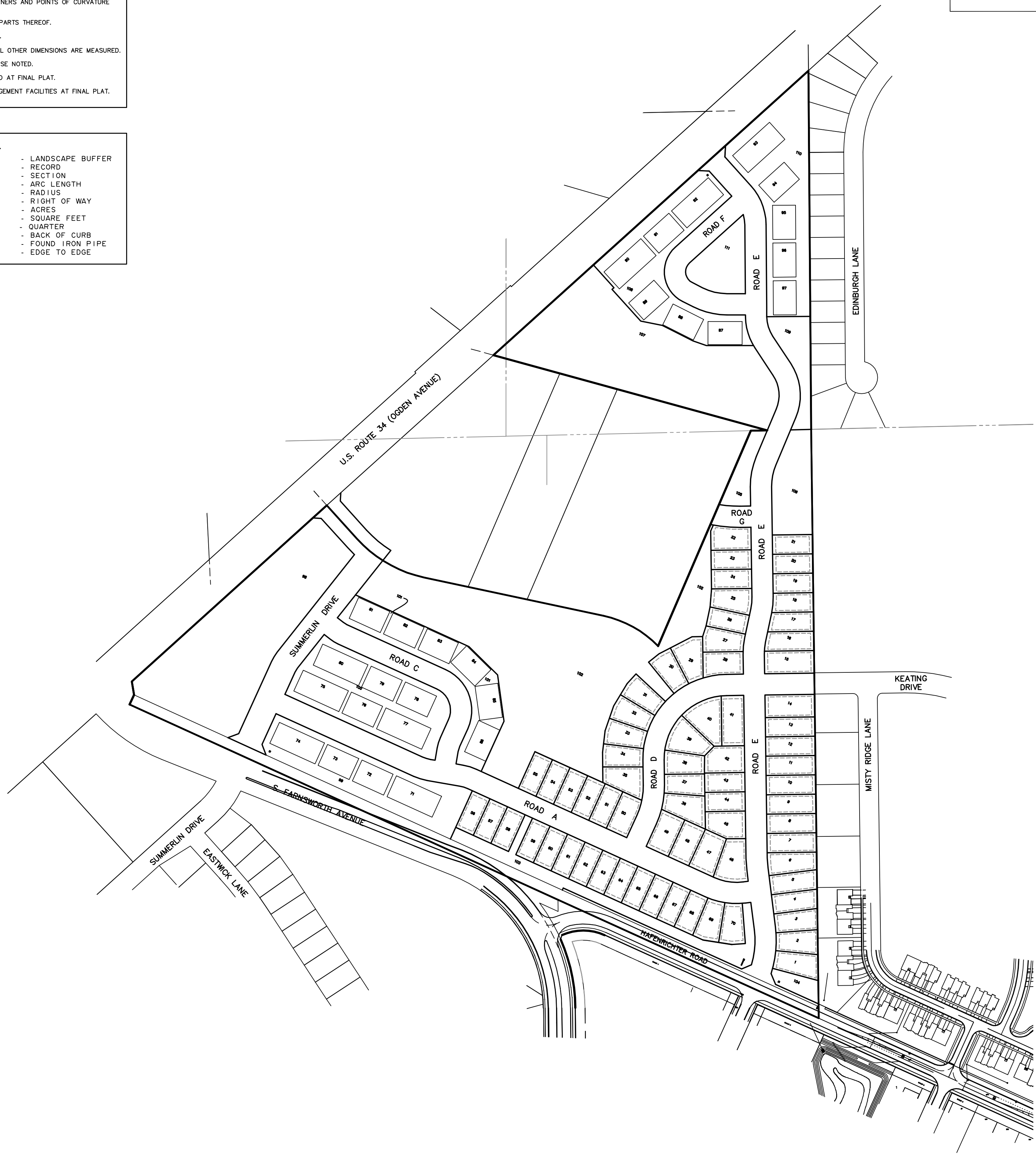
- NOTES**
- 3/4 INCH IRON PIPE OR MAG NAIL SET AT ALL LOT CORNERS AND POINTS OF CURVATURE UNLESS OTHERWISE NOTED.
 - ALL MEASUREMENTS ARE SHOWN IN FEET AND DECIMAL PARTS THEREOF.
 - DIMENSIONS SHOWN ALONG CURVES ARE ARC DISTANCES.
 - DIMENSIONS ENCLOSED WITH () ARE RECORD DATA. ALL OTHER DIMENSIONS ARE MEASURED.
 - ALL EASEMENTS ARE WILL BE GRANTED UNLESS OTHERWISE NOTED.
 - BUILDING ENVELOPES WILL BE DIMENSIONED AND LOCATED AT FINAL PLAT.
 - EASEMENTS WILL BE GRANTED OVER STORMWATER MANAGEMENT FACILITIES AT FINAL PLAT.

ABBREVIATIONS

N.	- NORTH	L.S.B.	- LANDSCAPE BUFFER
S.	- SOUTH	REC.	- RECORD
E.	- EAST	SEC.	- SECTION
W.	- WEST	L.	- ARC LENGTH
NW.	- NORTHWEST	R.	- RADIUS
DOC.	- DOCUMENT	R.O.W.	- RIGHT OF WAY
MON.	- MONUMENT	Ac.	- ACRES
O	- ON LINE	S.F.	- SQUARE FEET
B-B	- BACK TO BACK	1/4	- QUARTER
B.S.L.	- BUILDING SETBACK	B/C	- BACK OF CURB
E.T.B.E.	- EXCEPTION TO BLANKET EASEMENT	FIP	- FOUND IRON PIPE
		E-E	- EDGE TO EDGE

LINE LEGEND

	- SUBDIVISION BOUNDARY LINE (Heavy Solid Line)
	- LOT LINE/PROPERTY LINE (Solid Line)
	- BUILDING LINE (Long Dashed Lines)
	- EASEMENT LINE/LIMITS OF EASEMENT (Short Dashed Lines)
	- CENTERLINE (Single Dashed Lines)
	- QUARTER SECTION LINE (Double Dashed Lines)
	- SECTION LINE (Triple Dashed Lines)
	- PHASE LINE/LOT LINE (Heavy Dashed Lines)
	- FLOODPLAIN LINE (Heaviest Dashed Lines)



CITY RESOLUTION _____
PASSED ON _____

LEGEND

EXISTING	PROPOSED	DESCRIPTION
		MANHOLE
		CATCH BASIN
		INLET
		CLEANOUT
		SLOPE INLET BOX
		HEADWALL
		END SECTION
		STORM SEWER
		SANITARY SEWER
		WATERMAIN
		VALVE & BOX
		WATER VALVE IN VAULT
		FIRE HYDRANT
		CONTOURS
		ELEVATIONS
		STREET LIGHT
		WATERMAIN PROTECTION
		SILT FENCE INLET PROTECTOR
		TEMPORARY STRAW BALE DITCH CHECK
		SILT FENCE DITCH CHECK
		RIP-RAP
		OVERFLOW ROUTE

REVISIONS

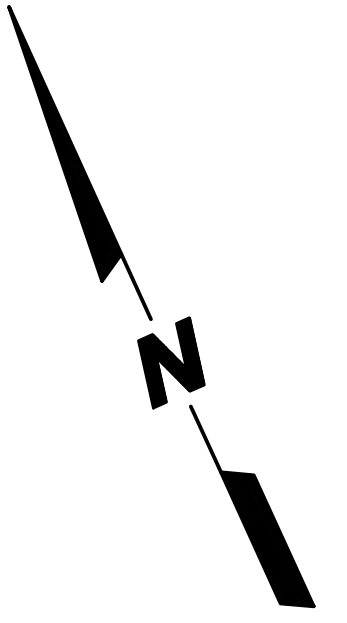
NO.	DATE	DESCRIPTION
1	08-21-23	REVISED SITE PLAN
2	09-13-23	REVISED STREET NAMES
3	11-17-23	REVISED SITE PLAN
4	12-15-23	UPDATED LOT NUMBERS

PETITIONER:
D.R. HORTON, INC.-MIDWEST, A CALIFORNIA CORPORATION
1750 E. GOLF RD., SUITE 925
SCHAUMBURG, IL 60173
(847) 362-9100

PREPARED BY:
CEMCON, Ltd.
Consulting Engineers, Land Surveyors & Planners
2280 White Oak Circle, Suite 100
Aurora, Illinois 60502-9675
PH: 630.862.2100 FAX: 630.862.2199
E-Mail: info@cemcon.com Website: www.cemcon.com

DISC NO.: 637028 FILE NAME: PREOVER
DRAWN BY: BCD FLD. BK. / PG. NO.: BK./PG.
COMPLETION DATE: 04-18-2023 JOB NO.: 637.028
XREF : TOPO PROJECT MANAGER : KTS
TAB: PREPLAT-01

DRAWING PATH: P:\327028\DWG\END\DRAWINGS\PRELIMINARY\PRELIMINARY.DWG
PLOT FILE CREATED: 12/15/2023 BY: BRANDON DAVIS



60 30 0 60
SCALE: 1 INCH = 60 FEET



STORMWATER CONTROL EASEMENT HEREBY GRANTED

102
302,893 S.F.
6.95 AC.

66' HEREBY DEDICATED FOR PUBLIC RIGHT-OF-WAY

103
46,780 S.F.
1.07 AC.

7' HEREBY DEDICATED FOR PUBLIC RIGHT-OF-WAY

33' HEREBY DEDICATED FOR PUBLIC RIGHT-OF-WAY

ROAD A

ROAD D

ROAD E

HAFENRICHTER ROAD

S. FARNSWORTH AVENUE

PETITIONER:
D.R. HORTON, INC.-MIDWEST, A CALIFORNIA CORPORATION
1750 E. GOLF RD., SUITE 925
SCHAUMBURG, IL 60173
(847) 362-9100

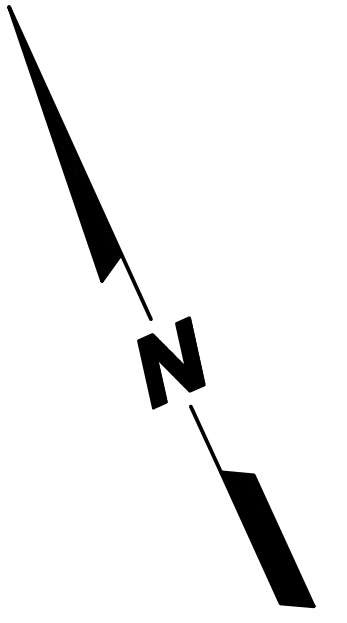
REVISIONS	
NO.	DESCRIPTION
1	08-21-23 REVISED SITE PLAN
2	09-13-23 REVISED STREET NAMES
3	11-17-23 REVISED SITE PLAN
4	12-15-23 UPDATED LOT NUMBERS

PREPARED BY:
CEMCON, Ltd.
Consulting Engineers, Land Surveyors & Planners
2280 White Oak Circle, Suite 100
Aurora, Illinois 60502-9675
PH: 630.862.2100 FAX: 630.862.2199
E-Mail: info@cemcon.com Website: www.cemcon.com

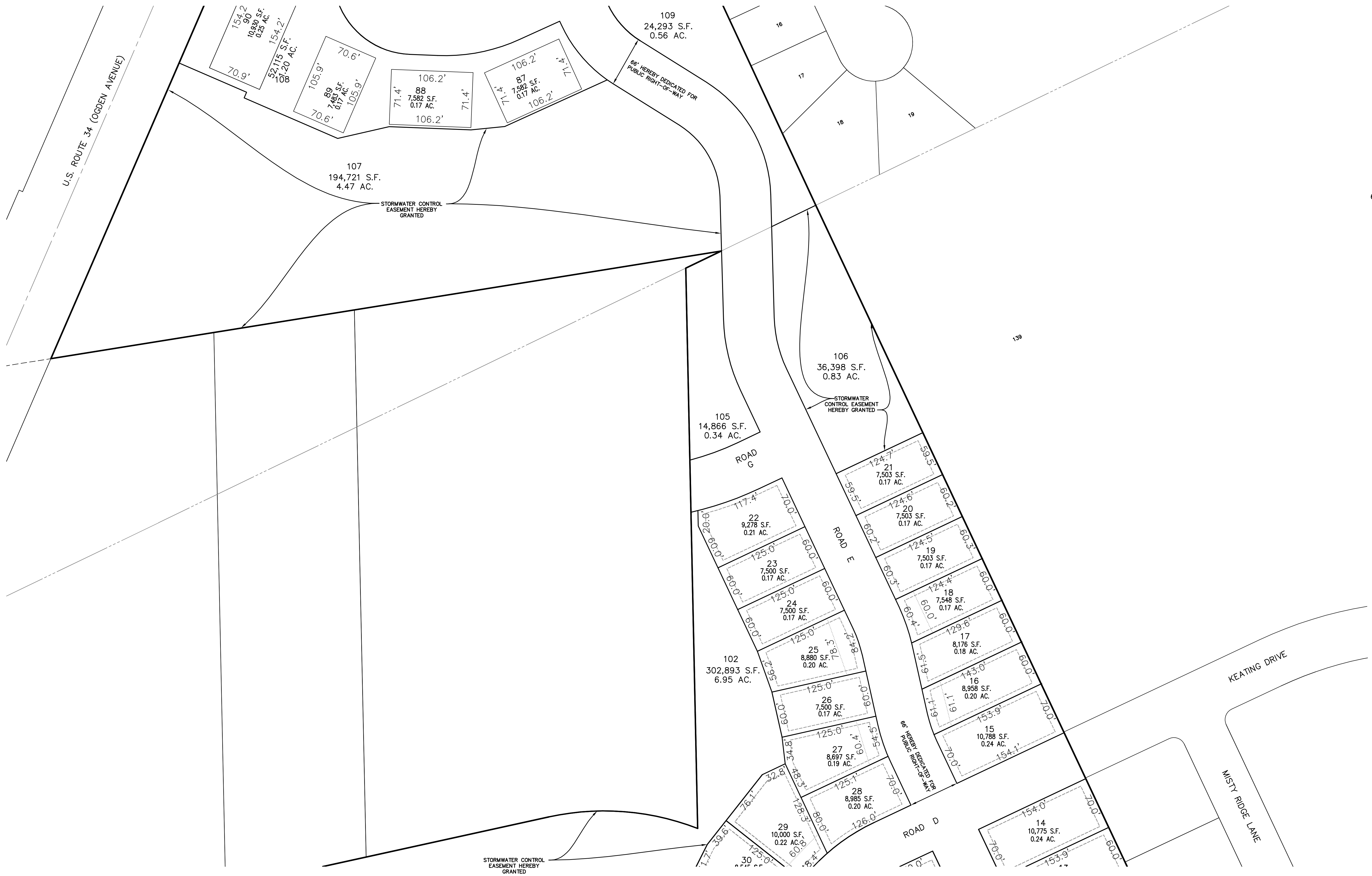
DISC NO.: 637028 FILE NAME: PREOVER
DRAWN BY: BCD FLD. BK. / PG. NO.: BK./PG.
COMPLETION DATE: 04-18-2023 JOB NO.: 637.028
XREF : TOPO PROJECT MANAGER : KTS
TAB: PREPLAT-03

Copyright © 2023 Cemcon, Ltd. All rights reserved.

PLOT FILE CREATED: 12/15/2023 BY: BRANSON DAVID
DRAWING PATH: P:\637028\DWG\DWG\DRAWINGS\PRELIMINARY\PRELIMINARY.PRECOVER.DWG



60 30 0 60
SCALE: 1 INCH = 60 FEET



DRAWING PATH: P:\637028\DWG\DWG\DRAWINGS\PRELIMINARY\PRELIMINARY.PREORDER.DWG
PLOT FILE CREATED: 12/15/2023 BY: BRANSON DAVID

PETITIONER:
D.R. HORTON, INC.-MIDWEST, A CALIFORNIA CORPORATION
1750 E. GOLF RD., SUITE 925
SCHAUMBURG, IL 60173
(847) 362-9100

NO.	DATE	DESCRIPTION
1	08-21-23	REVISED SITE PLAN
2	09-13-23	REVISED STREET NAMES
3	11-17-23	REVISED SITE PLAN
4	12-15-23	UPDATED LOT NUMBERS

PREPARED BY:
CEMCON, Ltd.
Consulting Engineers, Land Surveyors & Planners
2280 White Oak Circle, Suite 100
Aurora, Illinois 60502-9675
PH: 630.862.2100 FAX: 630.862.2199
E-Mail: info@cemcon.com Website: www.cemcon.com

DISC NO.: 637028 FILE NAME: PREOVER
DRAWN BY: BCD FLD. BK. / PG. NO.: BK./PG.
COMPLETION DATE: 04-18-2023 JOB NO.: 637.028
XREF : TOPO PROJECT MANAGER : KTS
TAB: PREPLAT-04

